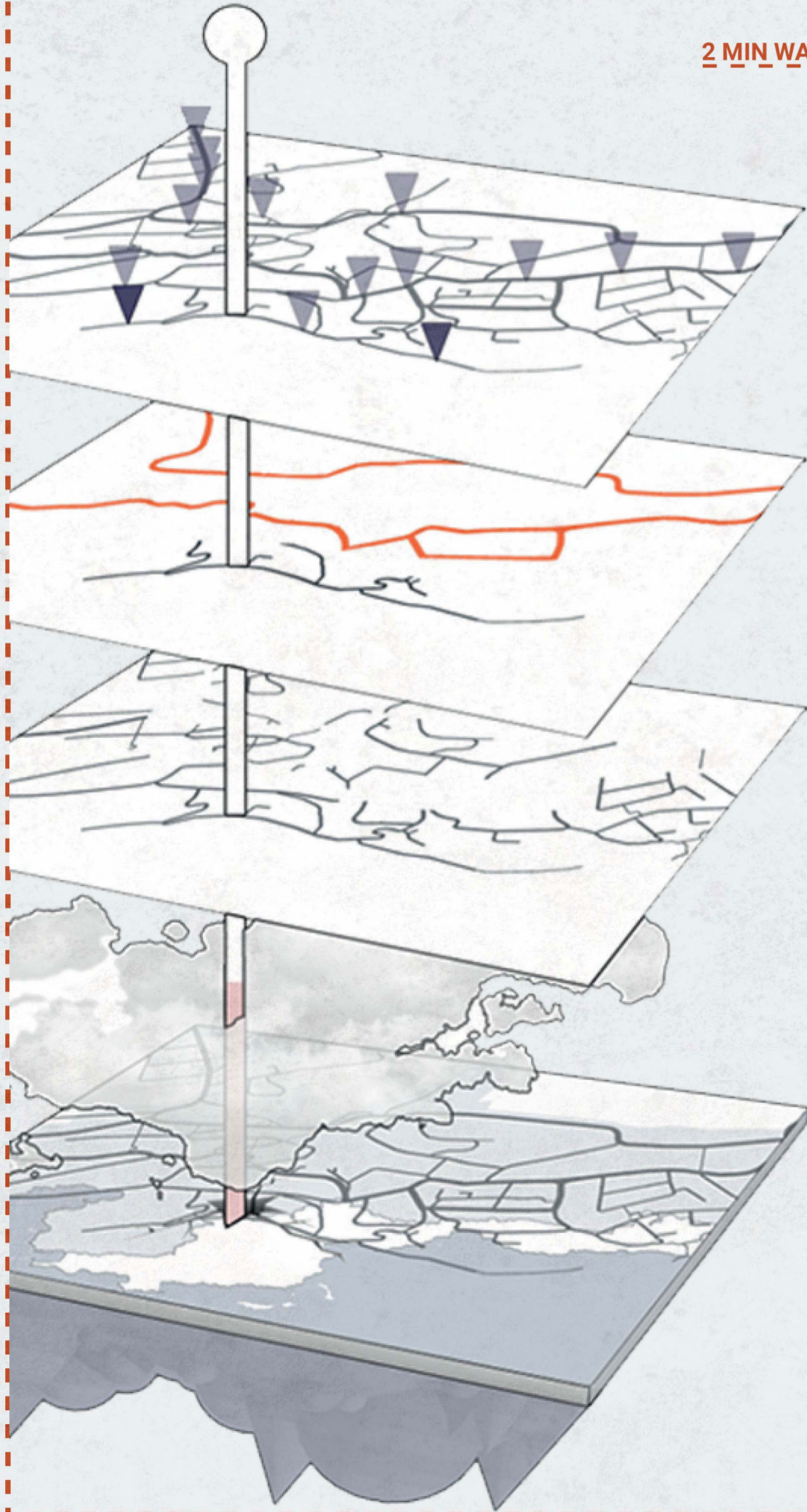


'CALVING*' THE FUTURE'

'CALVING THE FUTURE' AIMS TO TURN A DERELICT ARCADE ON THE SOUTH COAST OF THE ISLE OF WIGHT INTO A CLIMATE MUSEUM, USING ONE OF MANY COASTAL COMMUNITIES IN THE UK AS A CASE STUDY FOR THE IMPACT OF CLIMATE CHANGE AND SUBSEQUENT SEA LEVEL RISE.

THE TOWN OF VENT NOR WAS CHOSEN DUE TO ITS 'EXOTIC' MICRO-CLIMATE, UNLIKE ANYWHERE ELSE IN THE UK. IT'S SHELTERED, SOUTH-FACING ORIENTATION PROVIDES A POIGNANT 'STAGE' TO DISCUSS THE CLIMATE CRISIS AND SUBSEQUENT IMPACT.



2 MIN WALK



4 MIN WALK

SITE

KEY:

= BUS STOP

= CAR PARK

HEAVIER FLOWS OF TRAFFIC

BUS TICKETS COULD BE SCANNED IN TO OBTAIN ADMISSION TO THE 'MUSEUM' AT A REDUCED PRICE, ENCOURAGING VISITS VIA PUBLIC TRANSPORT.

MODERATE FLOWS OF TRAFFIC

THE SITE

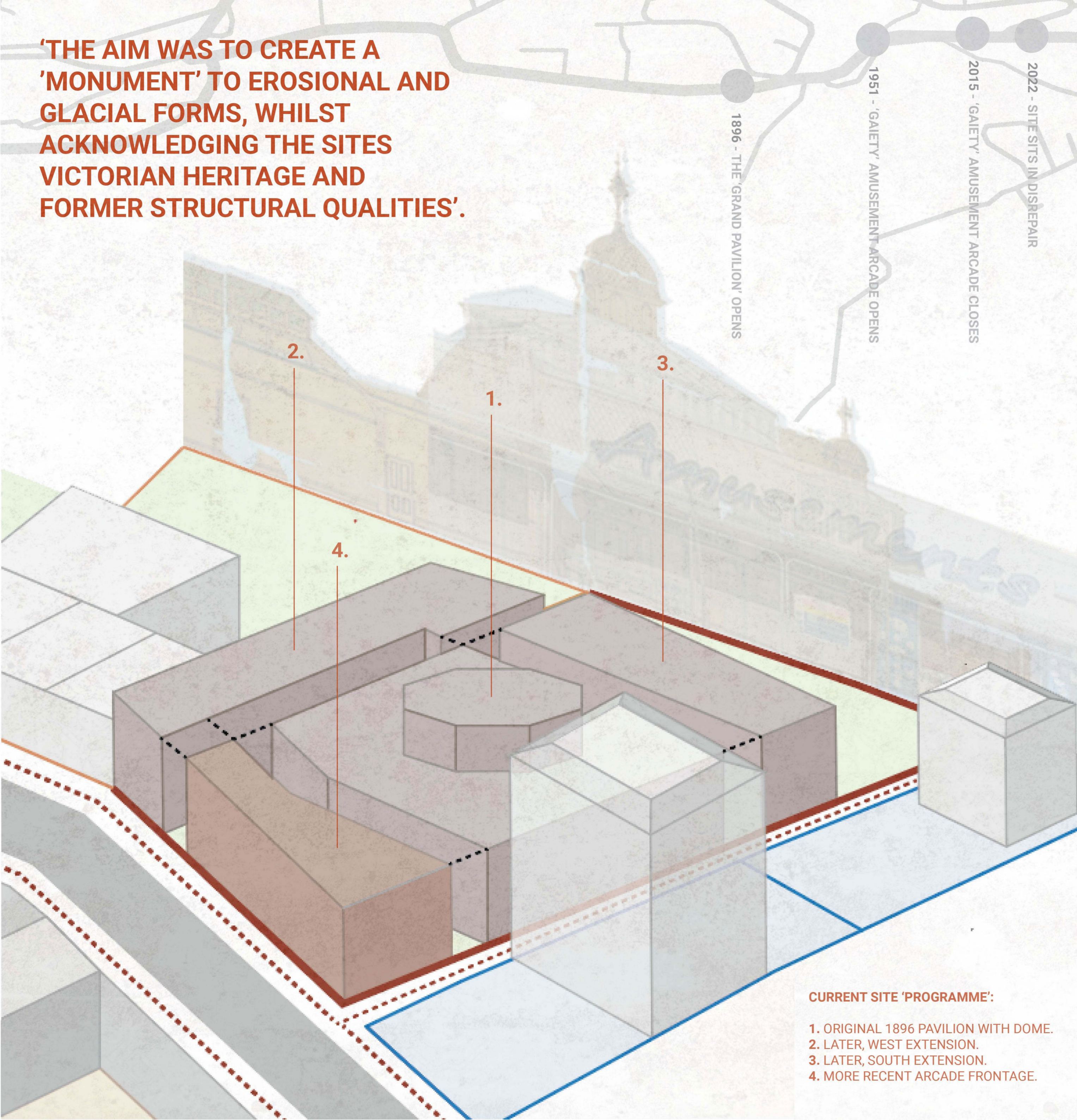
'...USING ONE OF MANY COASTAL COMMUNITIES IN THE UK AS A CASE STUDY FOR THE IMPACT OF CLIMATE CHANGE AND SUBSEQUENT SEA LEVEL RISE'.



* THE SHEDDING OF ICE FROM THE EDGE OF AN ICEBERG OR GLACIER.

50.5955° N, 1.2061° W

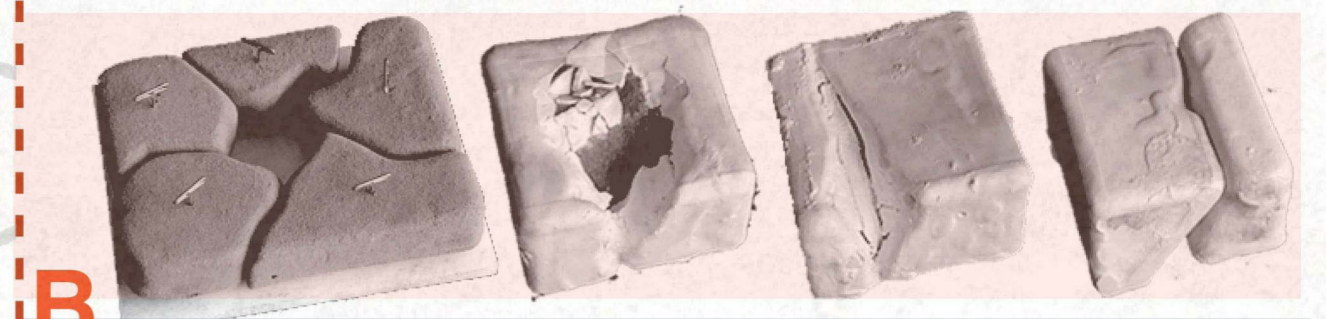
'THE AIM WAS TO CREATE A 'MONUMENT' TO EROSIONAL AND GLACIAL FORMS, WHILST ACKNOWLEDGING THE SITES VICTORIAN HERITAGE AND FORMER STRUCTURAL QUALITIES'.



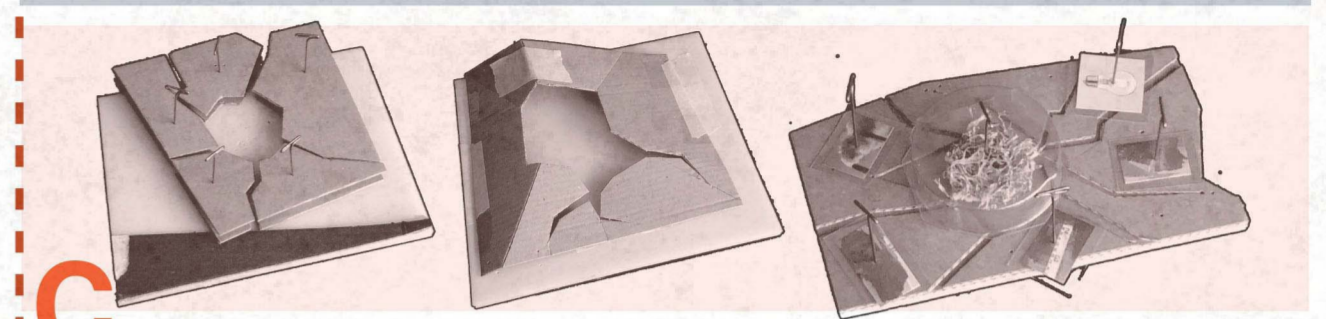
CURRENT SITE 'PROGRAMME':

- 1. ORIGINAL 1896 PAVILION WITH DOME.
- 2. LATER, WEST EXTENSION.
- 3. LATER, SOUTH EXTENSION.
- 4. MORE RECENT ARCADE FRONTAGE.

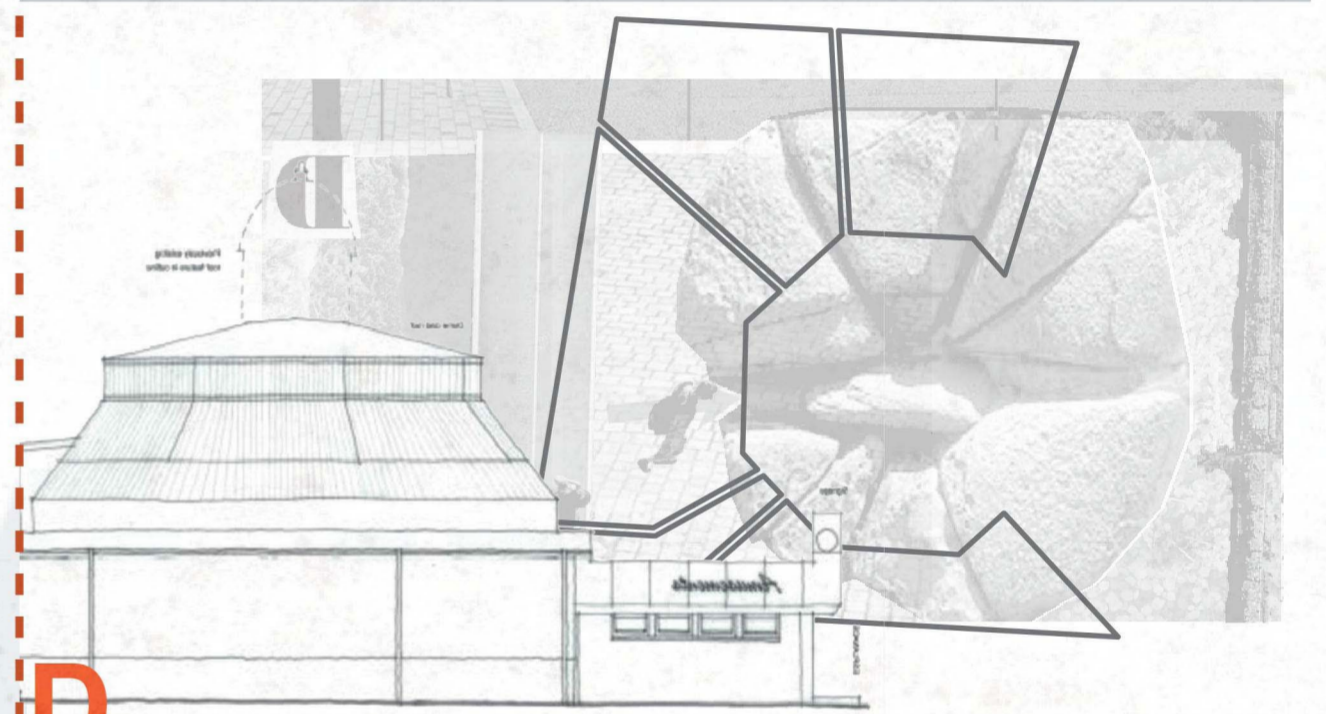
A SYNERGIES BETWEEN COASTAL AND EROSIONAL FORMS



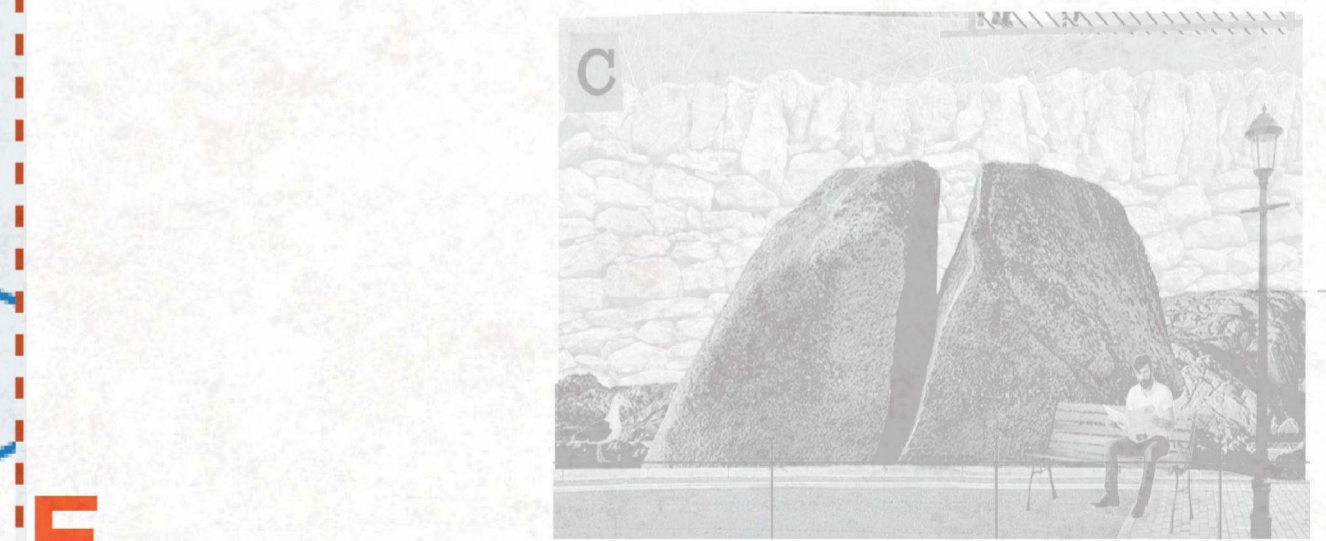
B IDEA A - CENTRAL 'FRACTURE' - REMINISCENT OF 1896 PAVILION



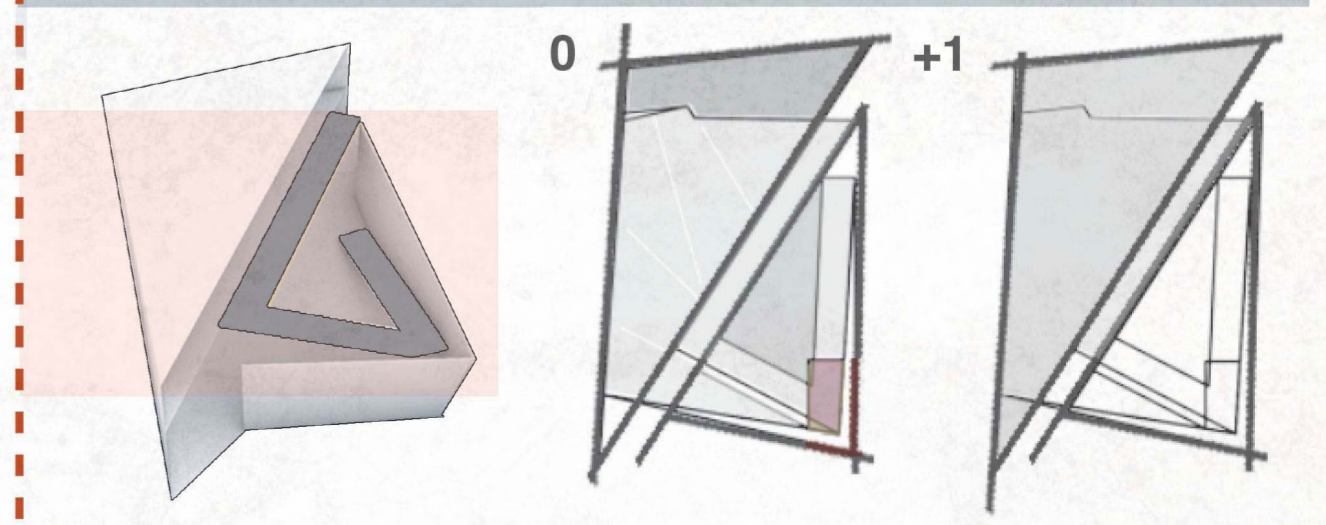
C TRANSLATION OF CONCEPT INTO PHYSICAL 'FRACTURED' PLAN



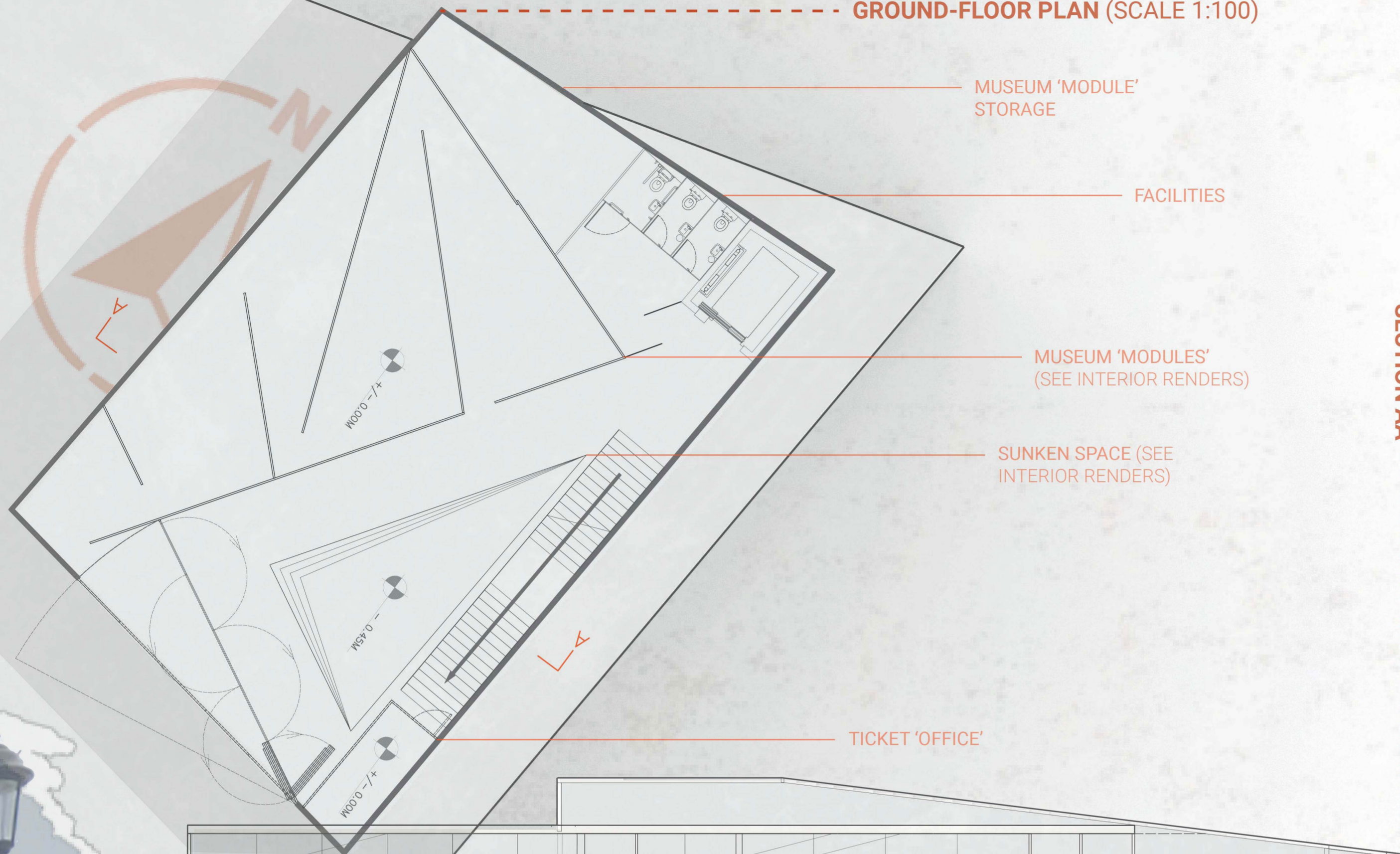
D IDEA B - SINGLE, DEFINED 'CRACK' ACROSS THE FLOOR PLAN



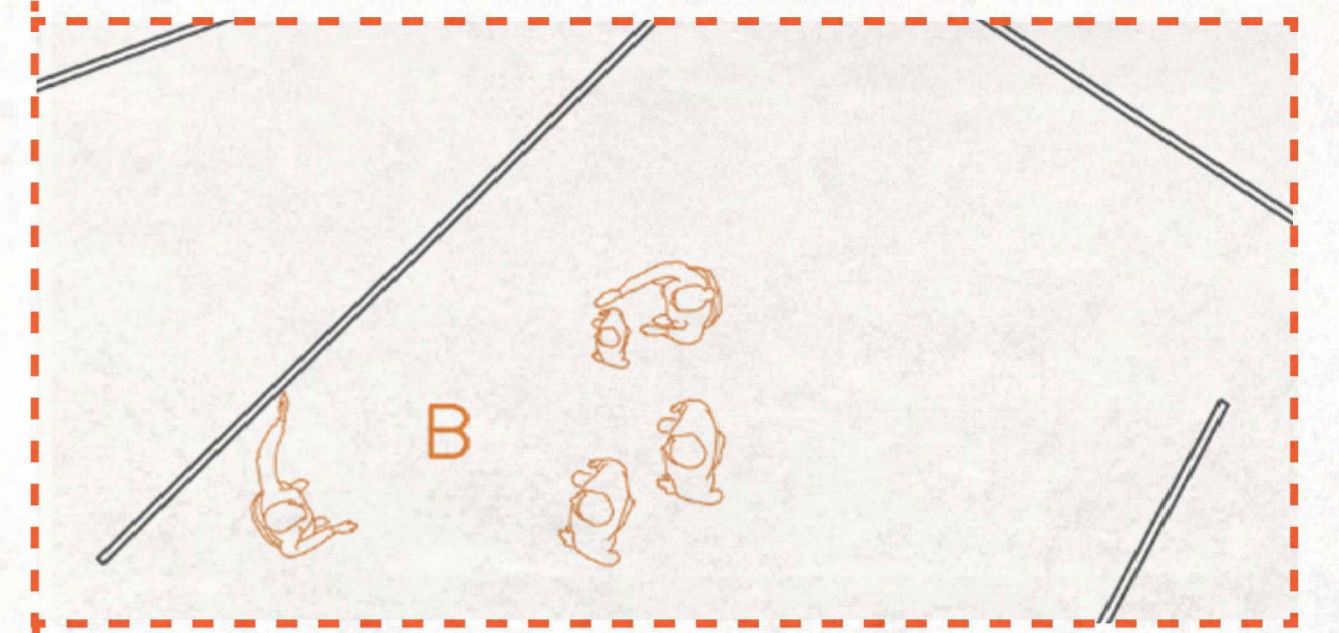
E STAIRCASE POSITIONING - A 'GHOST' OF THE FORMER DOME



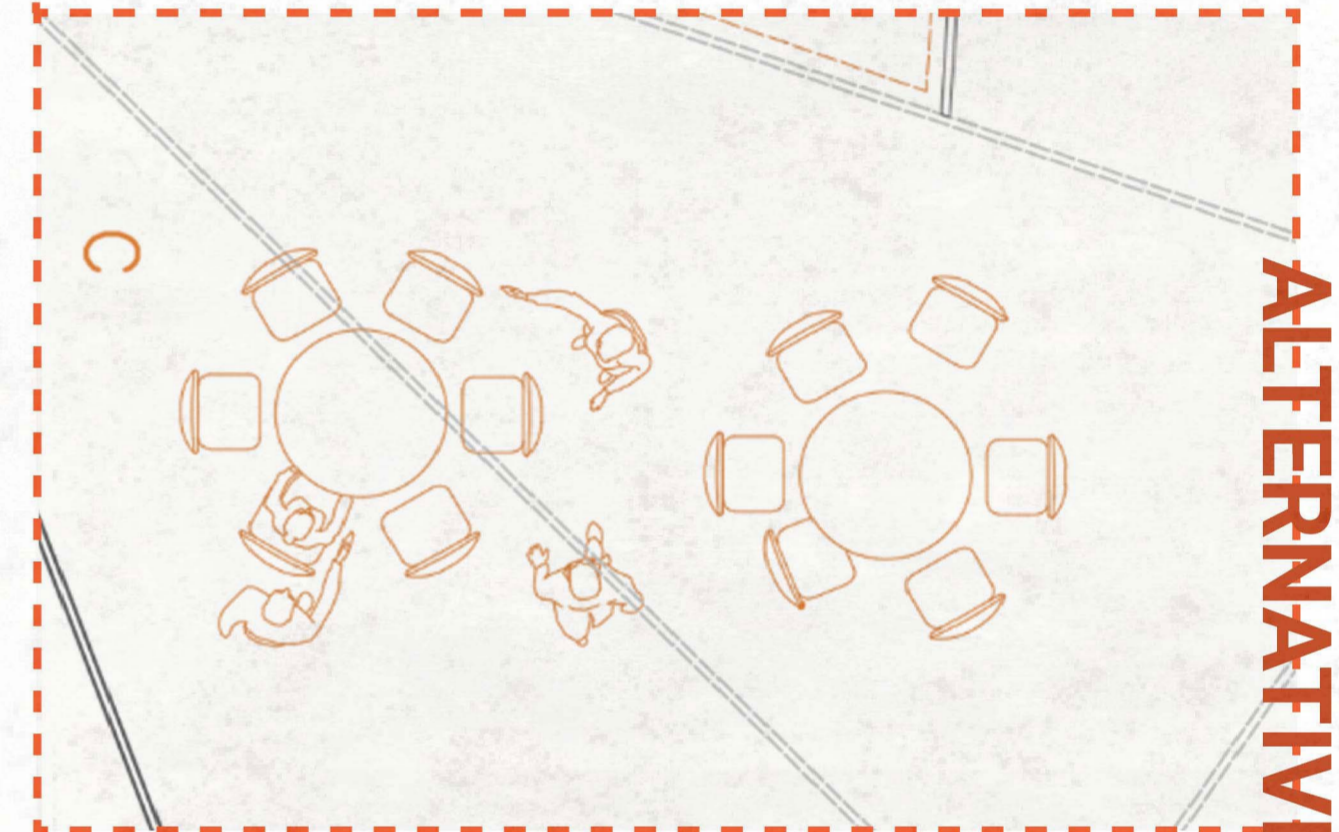
GROUND-FLOOR PLAN (SCALE 1:100)



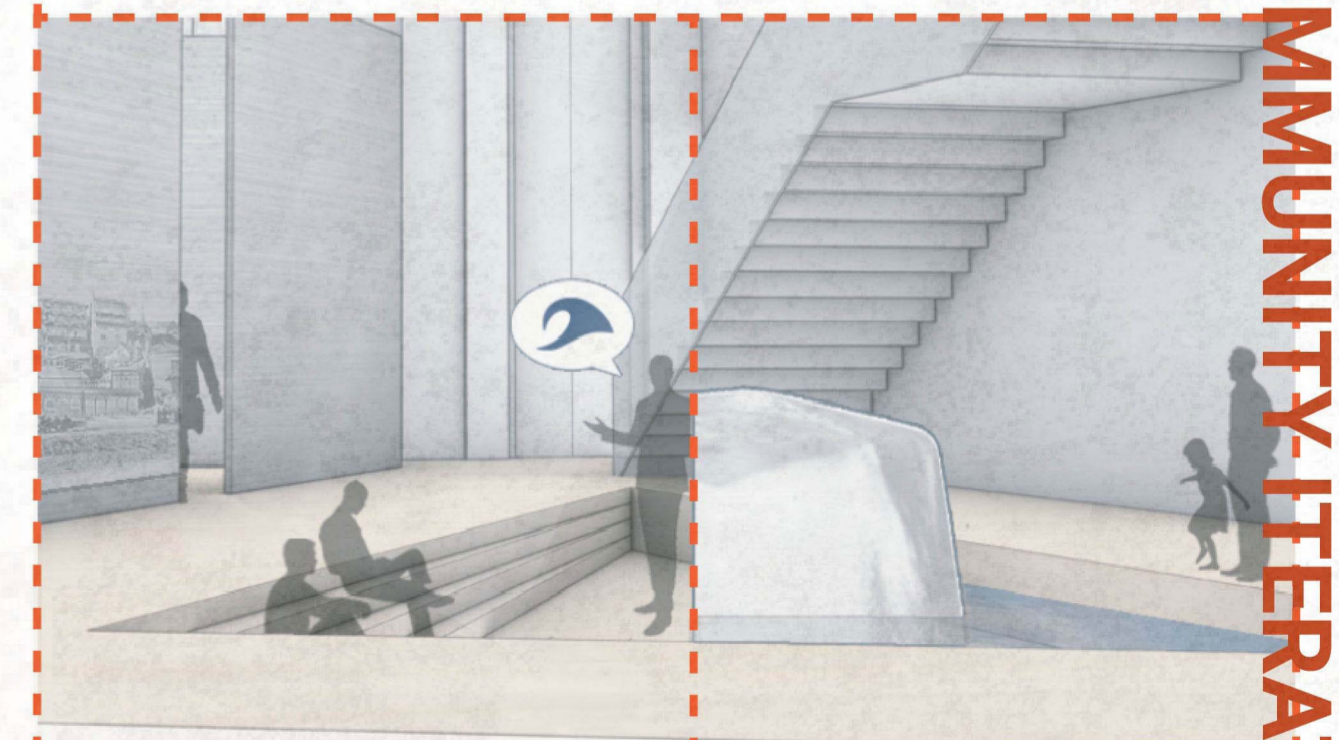
SECTION AA



ABOVE: MUSEUM MODULES COULD BE LEFT UP, OR PARTIALLY SO, IN ORDER TO DISPLAY THE WORK OF LOCAL ARTISTS / HOST POP-UP EXHIBITIONS ETC.



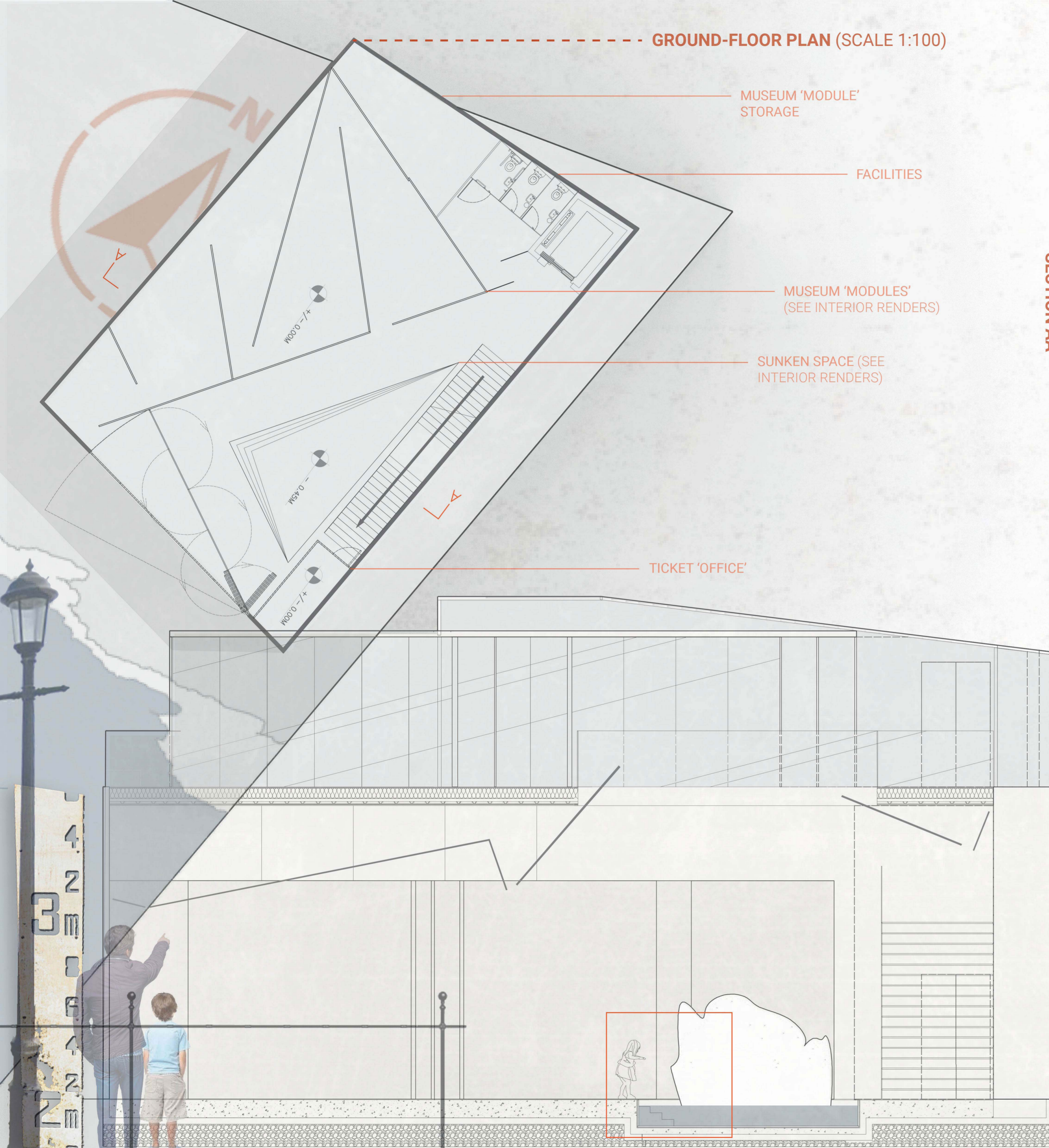
ABOVE: MUSEUM MODULES COULD BE REMOVED AND PLACED IN THE DESIGNATED STORAGE SPACE. THIS WOULD PROVIDE ONE LARGE SPACE FOR ACTIVITIES AND EVENTS ETC.



ABOVE (LEFT): WHEN USED AS MORE OF A COMMUNITY 'HUB', A SUNKEN STAGE COULD BE CREATED FOR THE LOCAL THEATRE GROUP / JAZZ BAND TO HOST 'INTIMATE' PERFORMANCES ETC.

ABOVE (RIGHT): WHEN THE SPACE SERVES AS A CLIMATE MUSEUM, A SUNKEN AREA OF FLOORING COULD SERVE AS A 'MELTING POOL' / INSTALLATION SPACE (SEE INTERIOR RENDERS).

ALTERNATIVE, COMMUNITY-ITERATIONS...



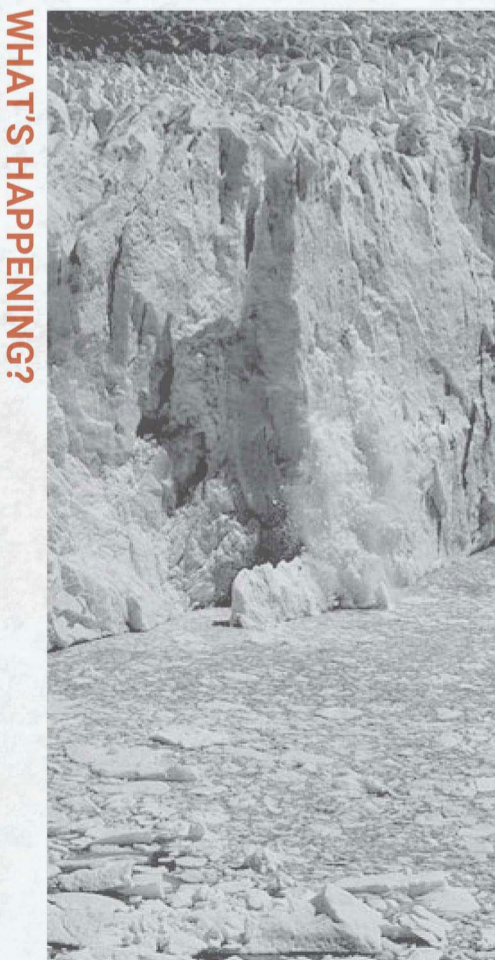


ABOVE: THE FIVE CLIMATE MUSEUM 'MODULES'.



ABOVE: TO THE LEFT, THE MUSEUM MODULES ARE VISIBLE, FEATURING ETCHINGS OF THE SITE'S HISTORY FROM 1896 TO PRESENT. THE VERSATILE SUNKEN STAGE IS ALSO VISIBLE, WHICH SERVES AS A 'MELTING POOL' AT THE START OF THE TOURIST SEASON - A LARGE BLOCK OF ICE ALLOWED TO MELT AS A VISUAL REPRESENTATION OF SEA LEVEL RISE.

ARRANGEMENT OF MUSEUM MODULES:



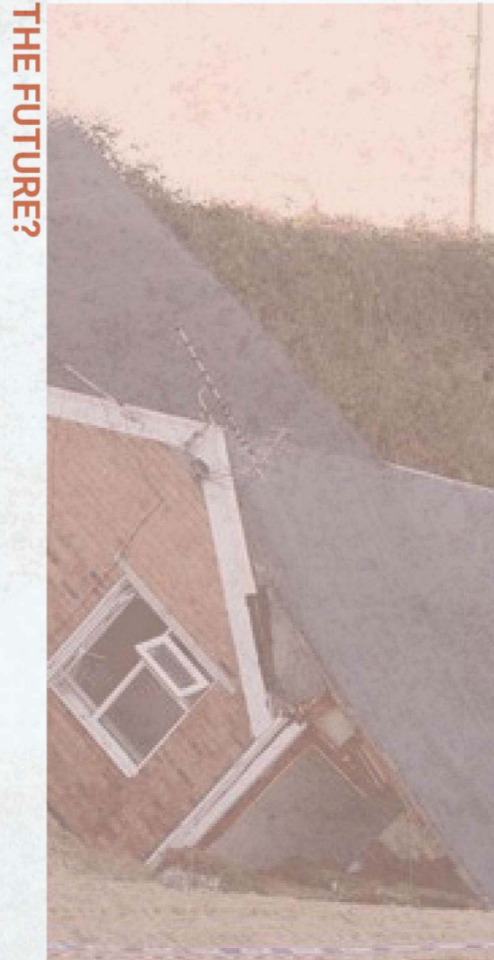
WHAT'S HAPPENING?



CAUSES



IMPACT ON LOCAL COMMUNITY



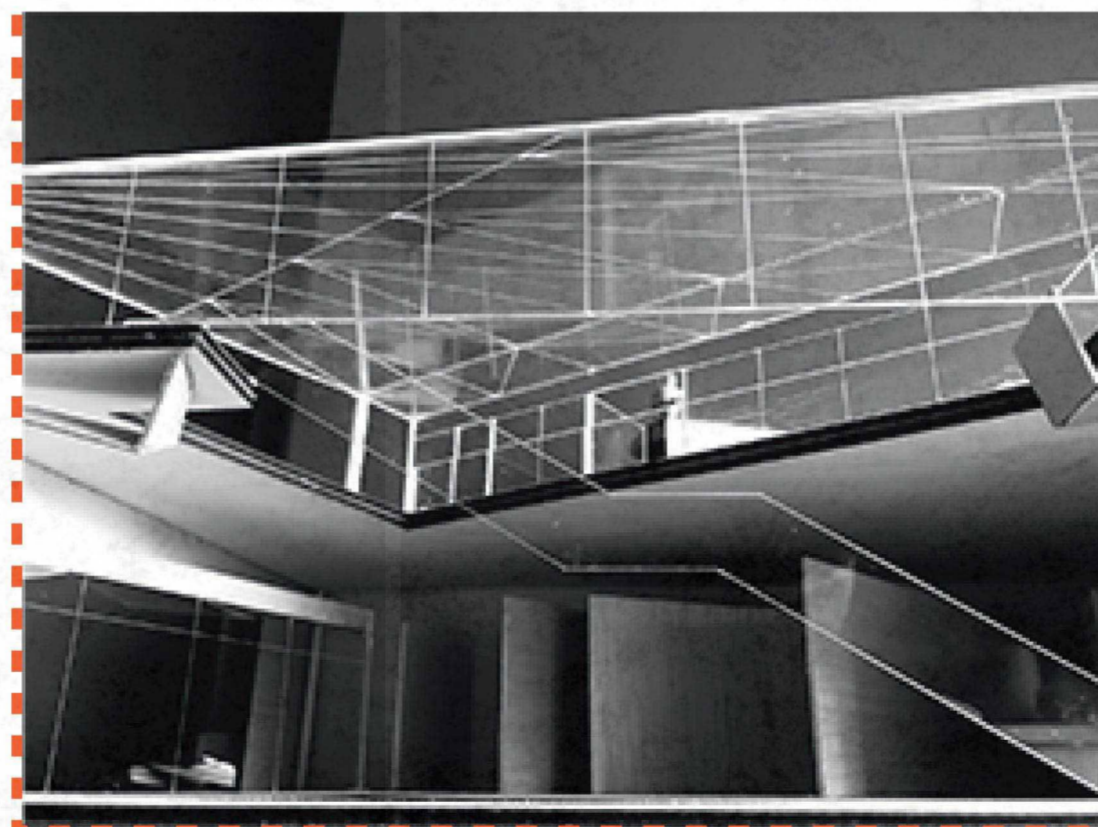
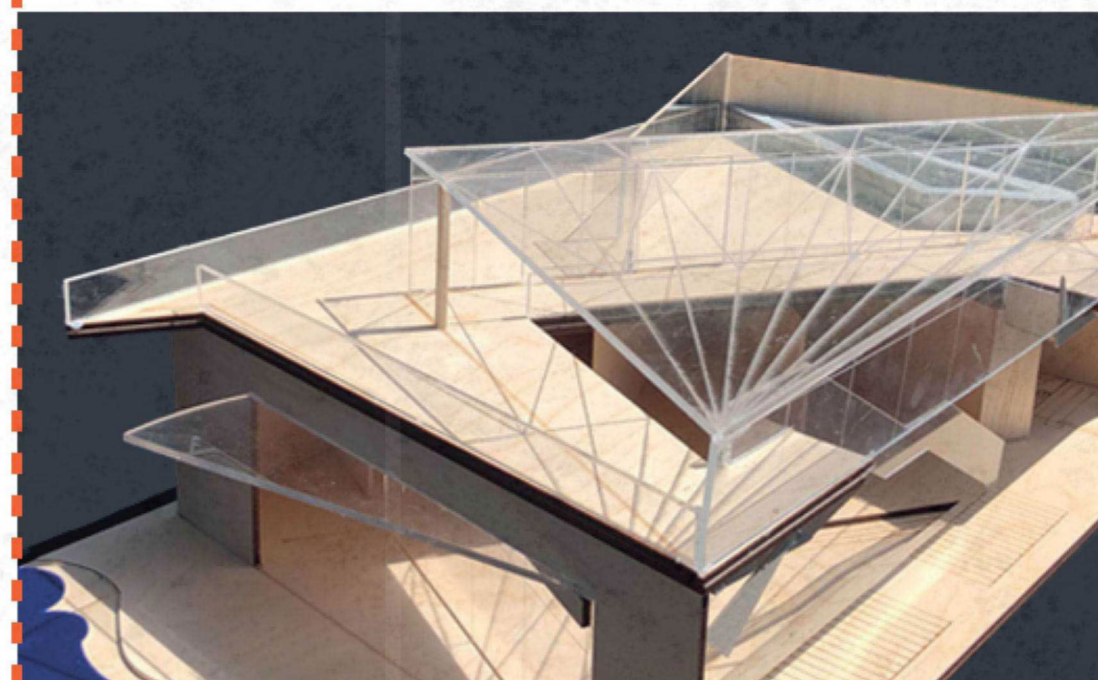
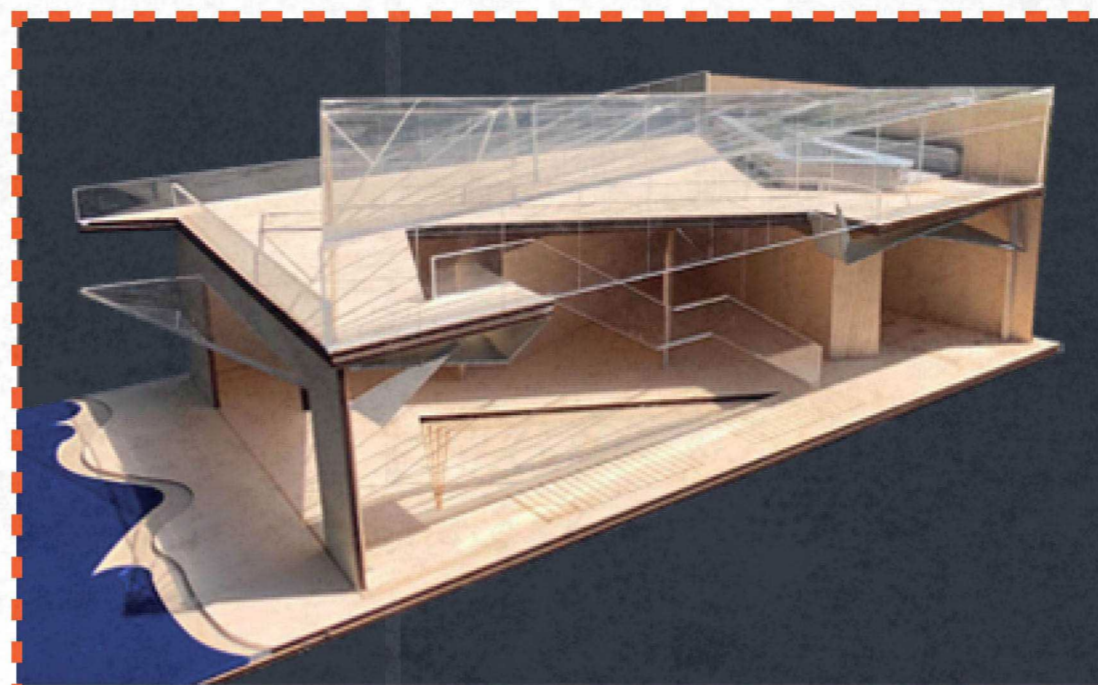
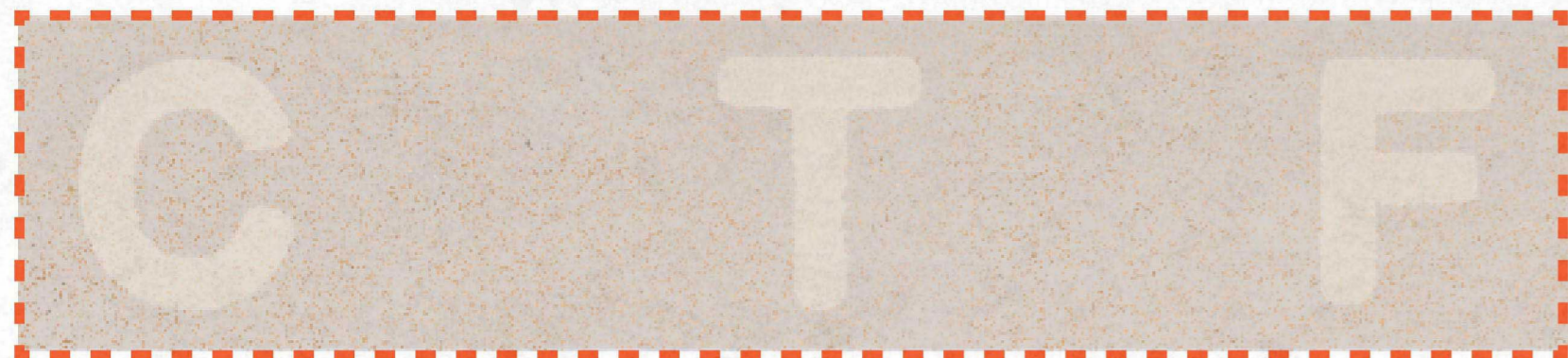
THE FUTURE?



WHAT CAN WE DO?

'THE SPACE PREDOMINANTLY SERVES AS A CLIMATE MUSEUM, EDUCATING AND INFORMING PEOPLE ON THE IMPACT CLIMATE CHANGE IS HAVING ON COASTAL COMMUNITIES...

...REMOVABLE 'MODULES' AND A SUNKEN SPACE, ALLOW THE VERSATILE INTERIOR TO DOUBLE AS A COMMUNITY HUB FOR THE TOWN - A REAL HIVE OF ACTIVITY ALL YEAR AROUND'.



'COASTAL COMMUNITIES ARE MORE THAN JUST AN ANNUAL HOLIDAY DESTINATION, TO MANY THEY ARE A LIVELIHOOD AND HOME'.

TOP LEFT: 'CTF' - 'CALVING THE FUTURE' - WILL BE PAINTED ONTO THE FRONT OF THE BUILDING IN A MOISTURE SENSITIVE AGRICULTURAL PAINT. THIS PAINT WILL MEAN THE LETTERS ONLY REVEAL THEMSELVES WHEN THE MOISTURE / VAPOUR LEVELS IN THE AIR EXCEED A CERTAIN LEVEL, A HOMAGE TO THE FRAGILITY OF OUR CLIMATE.

BELOW: WHEN A FOYER IS REQUIRED, THE FRONT WALL ANGLES INWARDS TO CREATE AN ENTRY SPACE. THE ANGLE CREATED ALSO FUNNELS PEOPLE FROM THE TICKET OFFICE INTO THE FIRST 'MODULE' OF THE MUSEUM.

WHEN A FOYER ISN'T REQUIRED, THE WALL CAN SIT BACK FLUSH WITH THE REST OF THE FACADE, MAXIMISING INTERIOR SPACE.

