

# Connect

Connect repurposes a vacant two-story building located on the edge of Chester's Grosvenor Park. A third space that provides facilities for local and out-of-area business users to work, rest and collaborate. A range of spaces separate from the home and office offer flexible and relaxed individual or group settings for day, evening, or overnight use.

With the aim of becoming a regular location for individuals or groups to connect outside of their organisations, the building interiors have been designed to provide a range of working areas that contribute to a better working environment and improved mental health.

Curved neutral clay textured walls guide users through open areas to individual zones. Acoustic glass provides separate meeting, meditation, and reading rooms. Textured curved walls and coloured fabrics clad the walls of group and individual working pods and natural light and views to the exterior landscaped areas connect occupants with the wider context.

## A Third Space.

A third space is a place for people to use outside the home and office environment. A cafe, bar, or gym are all considered third places where people can go alone or meet others. Work, relaxation, or collaboration can all occur under one roof, and encouraging people to connect.





## Project programme.

The area of Union Street is predominantly surrounded by business uses. Creating a place for professionals to go for out of hours working and to relax, sleep and form new relationships may enhance a better mind and productivity within the workplace.

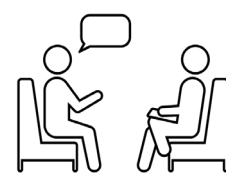
Providing a Third Space outside of the home and work, can contribute to a better health and well-being experience. A Third Space can provide office users facilities to relax, arrange meetings or an overnight stay, especially if an out of area professional is unfamiliar with the area and what is available.



Local & out of area  
Business People.



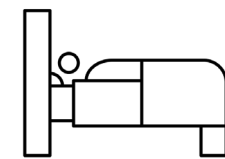
Work outside  
The office.



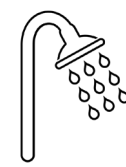
Meeting Place.



Refreshments



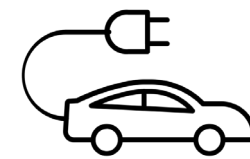
Sleep Facilities



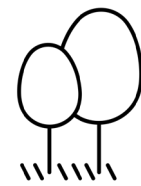
Bathroom Facilities.



Meditation



Car Charging



Local Park

## Potential user groups.



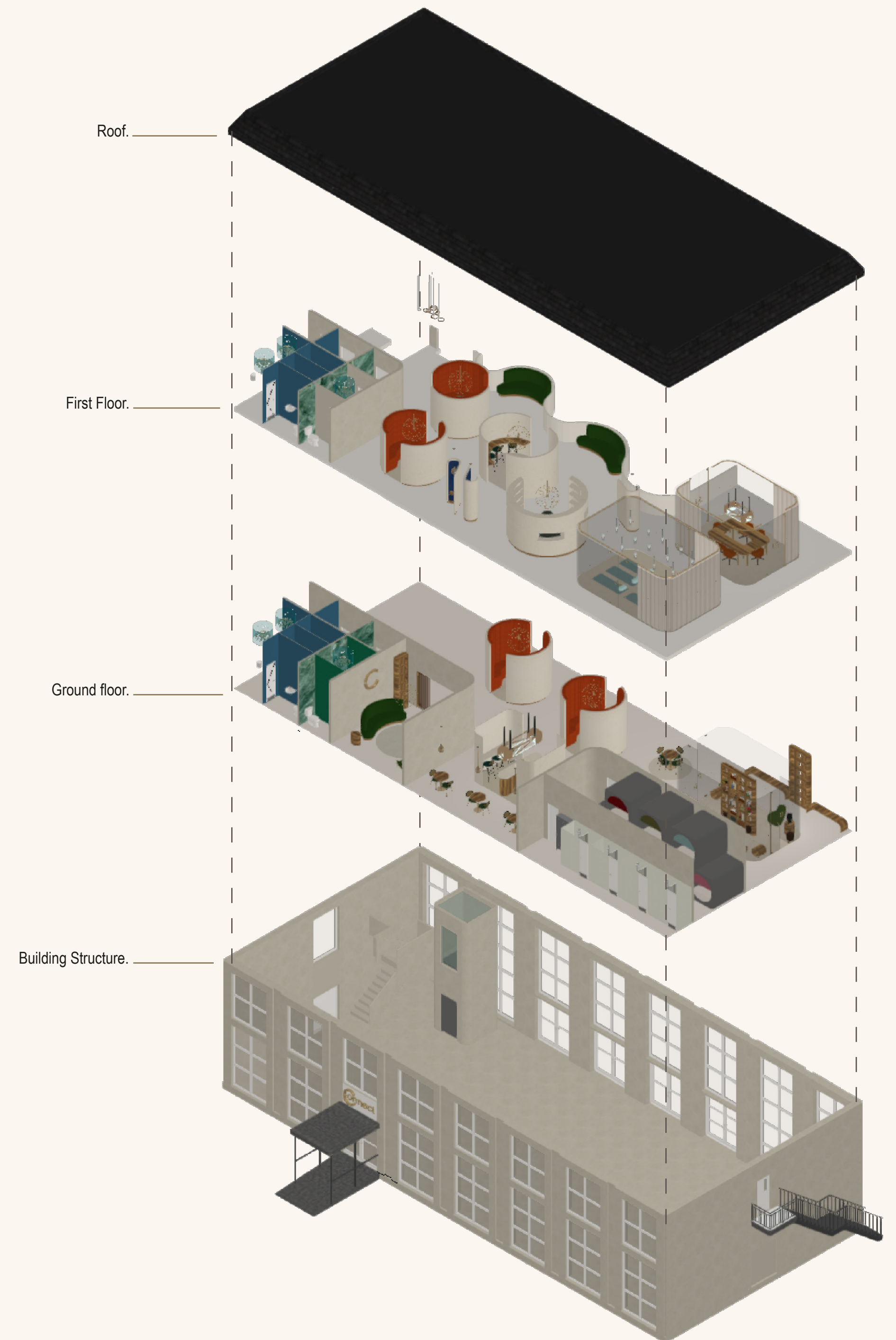
Businesses.



Visitors.

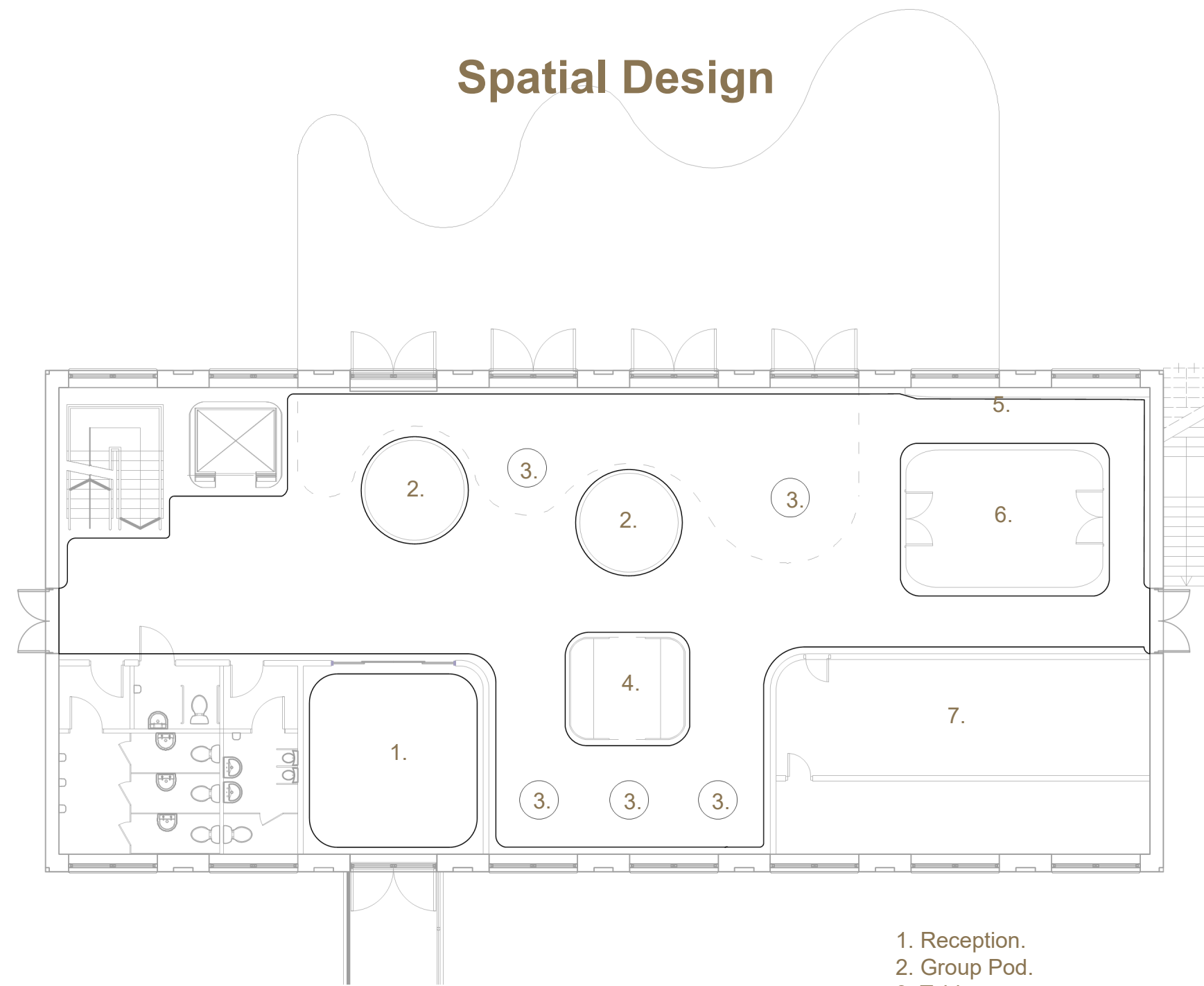


Retiree.



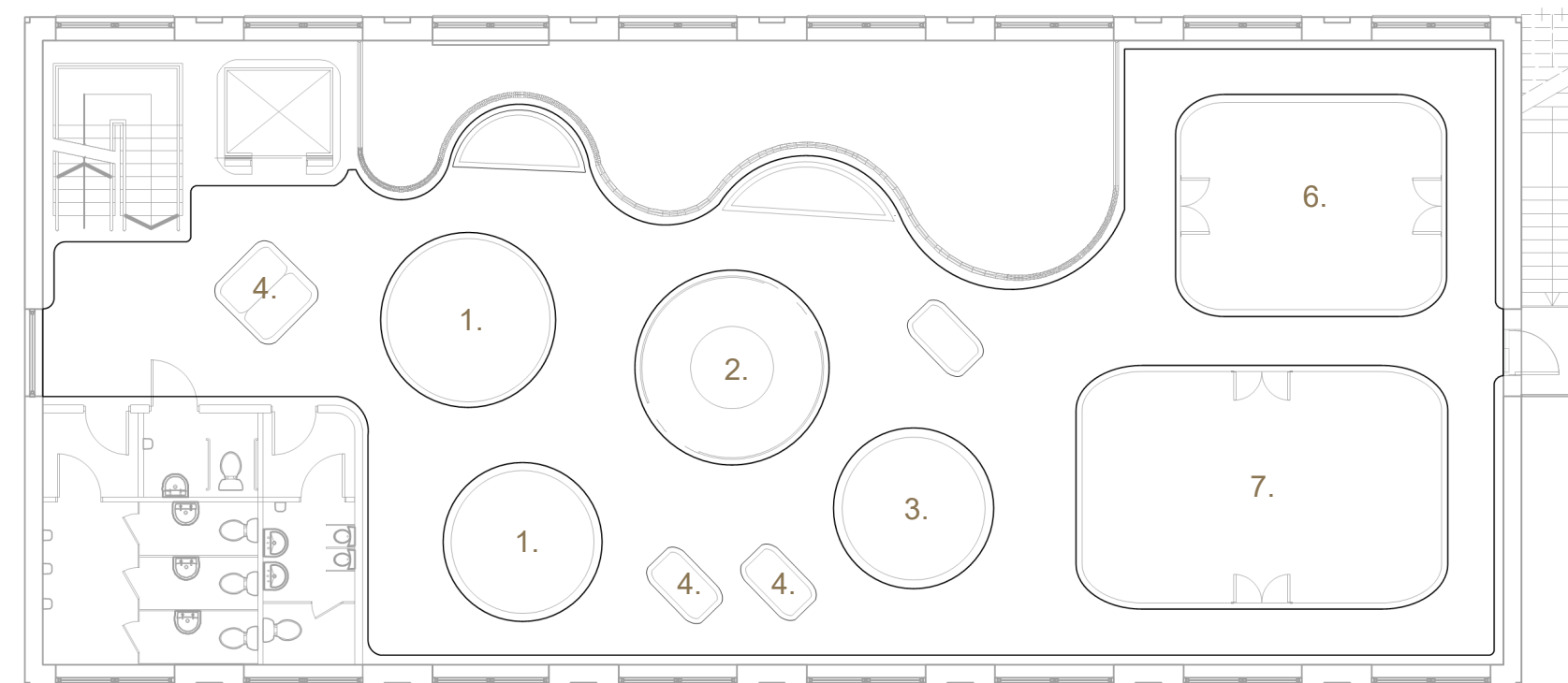


# Spatial Design



Ground floor Plan.

- 1. Reception.
- 2. Group Pod.
- 3. Tables
- 4. Coffee Station.
- 5. Window Seating.
- 6. Reading Room.
- 7. Meditation/ Yoga Room.



First floor Plan.

- 1. Work Pod.
- 2. Coffee Bar.
- 3. Social Pod.
- 4. Single Pod.
- 5. Window Seating.
- 6. Meeting Room.
- 7. Meditation Room.



Ground Floor Pods.

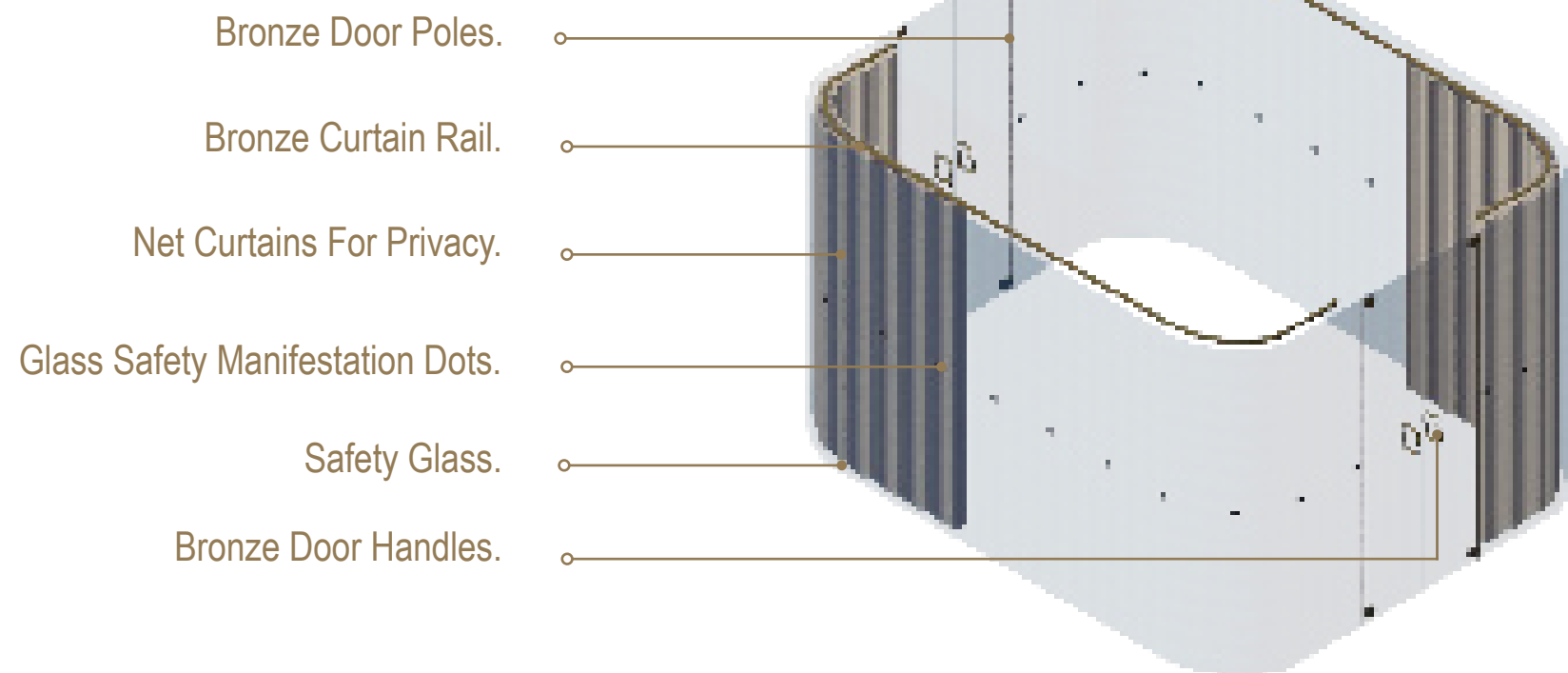
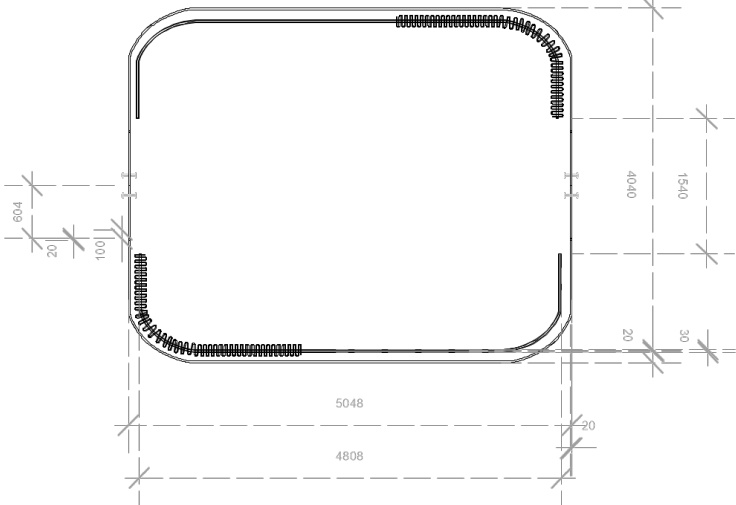


First Floor Coffee Station and Library.



# Design Detail For Glass Rooms.

Creating a beautiful curve can propose a graceful expression contributing to the effects of emotions stimulated through shapes. Curved walls and glass guides the user through the building as curves are less threatening then harsh straight lines.



Reading Room.

## Material Board

- 1. Acoustic Glass walls.
- 2. Smooth Textured Clay Walls.
- 3. Transparent Privacy Curtain Fabric.
- 4. Brushed Bronze Steel Door Rods.
- 5. Brushed Bronze Steel Door Handles.
- 6. Brushed Bronze Steel Table legs.
- 7. Velvet Chair Pads.
- 8. Olive Wood Veneer Table



Meeting Room

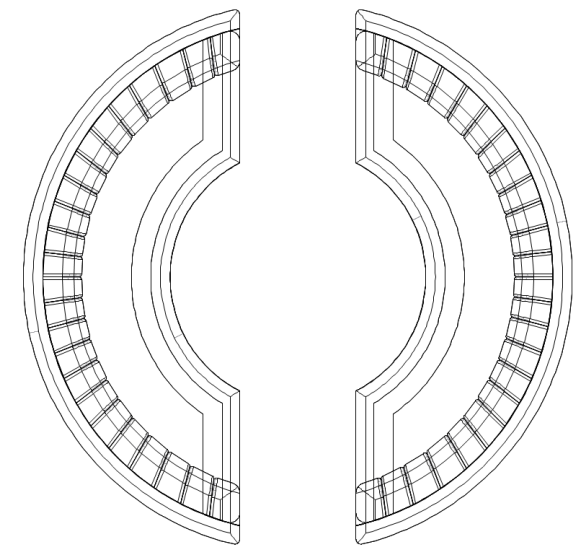


Yoga/Meditation Room

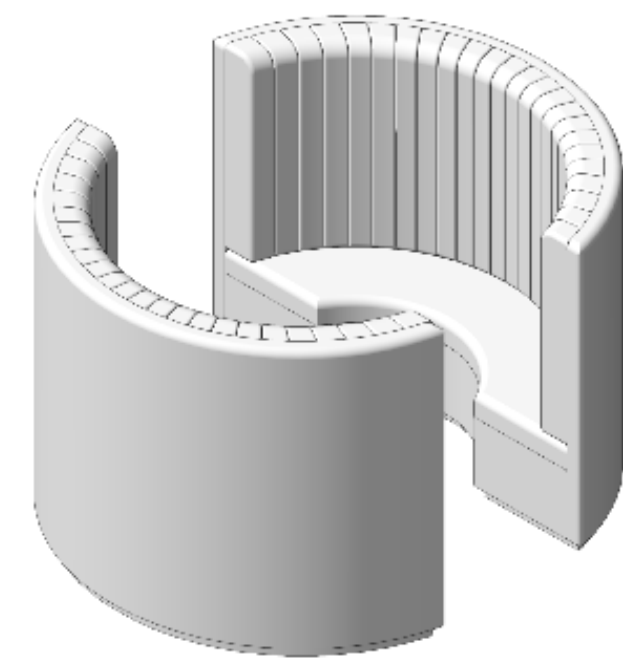


# Furniture Design.

Group Pod



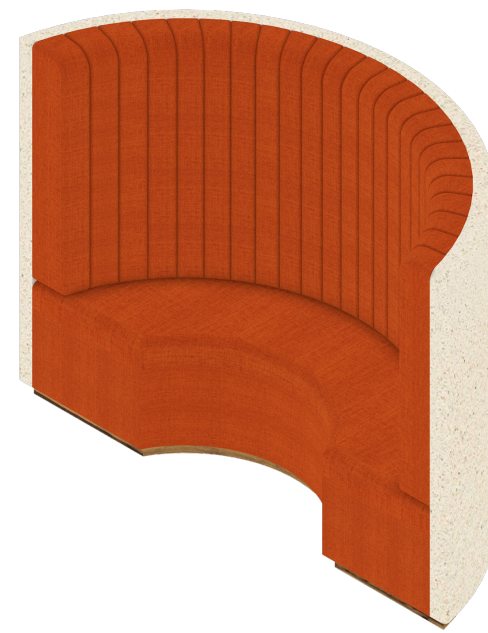
Design Detail



Final Design



Front Perspective

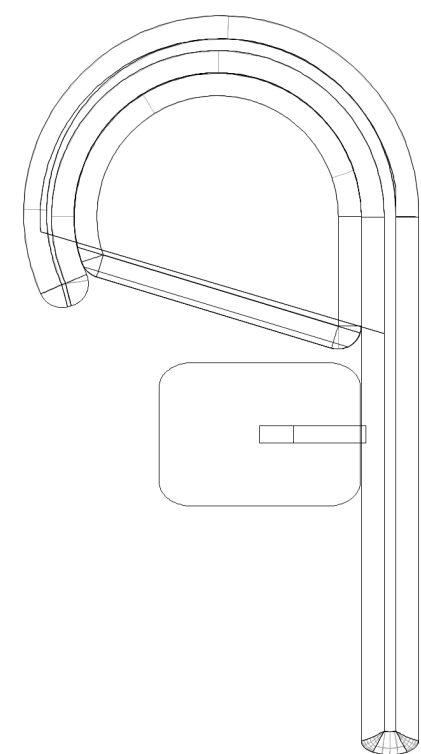


Materials

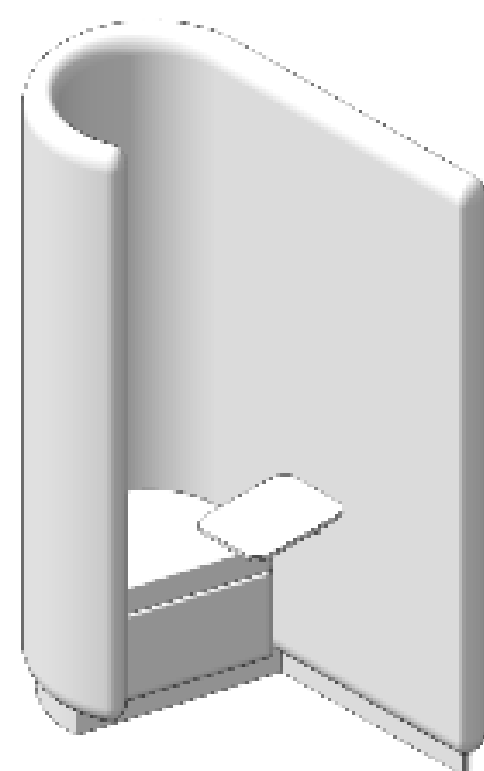
Library Room



Single Pod



Design Detail



Final Design.



Materials.

Smooth Clay texture. ○

Blue denim fabric. ○

Black Olive Wood. ○

