

# BEE HOUSE

A Hive House Apitherapy luxury vacation village in the mountains of Bulgaria, offering treatments and the benefits of bees in the comfort of a mountain house in the outskirts of the beautiful Bansko village in Pirin. During the summer the clients can benefit from fresh air and health benefits brought from the bees. During the winter while the bees are hibernating the guests can enjoy the amazing skiing facilities in the area.

The houses are constructed from shipping containers, a wooden interior construction with triple pane windows. Insulated with wool and with special spaces in the back of the houses for bee hives to be inserted under beds. The houses have the comfort of a private kitchen, bathrooms, terrace and an outdoor space. With food and groceries brought to your door.

The cite is 19 acres and consists of 9 luxurious mountain houses, a main communal area with registry and a “bee spa”, a shed for bee keeping tools and materials and transportation for the local bee keepers.

The Bee House works with lcal bee keepers, chefs and food industries in order to provide the most authentic Bulgarian experience for the quests of the village. In order to attract local tourists the village will be hosting different culinary events and festivals with local parTERS.



# THE APYTHERAPY

Apitherapy is a type of alternative therapy that uses products that come directly from honeybees.

It's used to treat illnesses and their symptoms as well as pain from acute and chronic injuries.

One of the more risk-free types of apitherapy, both for people and bees, is the Hive House Therapy.

Hive Houses are constructions built by bee enthusiasts and bee keepers, where they keep the bee hives under the house and the benefits from sleeping in these spaces above the bees are numerous.

Through vents connecting the hives with the interior there is an exchange of particles.



## MICRO-VIBRATION

Light massage which acts positively on the nervous, circulatory and muscular system, inducing a state of self-healing and balance.



## BREATHING CLEAN, IONIZED AIR

Near the beehive the air is high-ionized, and on the body reduces the level of free radicals.



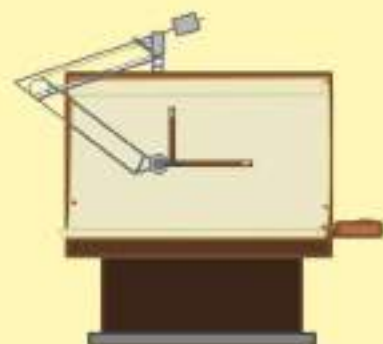
## CLEANES THE BRONCHI

It relieves spasms and facilitates the withdrawal of phlegm. It reduces the probability of tuberculous disease. It eliminates the symptoms of upper respiratory tract infections, disinfect the body and stimulates the production of immune system cells.



## DIY HIVE HOUSES

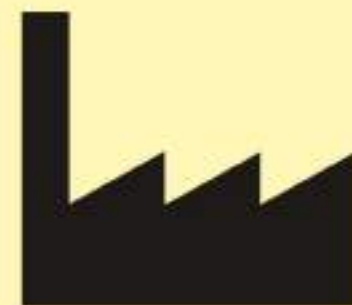
The only existing Hive Houses for Apitherapy are made by bee keepers and are mainly for personal use.



## DESIGN PROBLEM

The existing designs only have a bedroom.

# THE PROBLEM



## A GAP IN THE INDUSTRY

Although there is interest, there is no therapy experience designed.



## MARKET FOR NATURAL BE PRODUCTS

In Eastern Europe there is a problem with bee keepers having a market to sell their natural bee products.



## BEE EXTINCTION

Bees are an endangered species which is of grave importance for the planet.



# THE SITE

The chosen location is a 19 acre piece of land in the Pirin mountain in Bulgaria located 3 kilometers away from the city and ski resort of Bansko. It is an uneven land with a river running across it. The situation of the land on the mountain gives the benefit of an abundance of sunlight throughout the summer months. The restriction this project is facing is the situation of the bee hives since they cannot face North due to climate changes and winds which would harm the bees.



South-West Bulgaria



10 Minutes Away from Bansko - Ski Resort  
Google maps

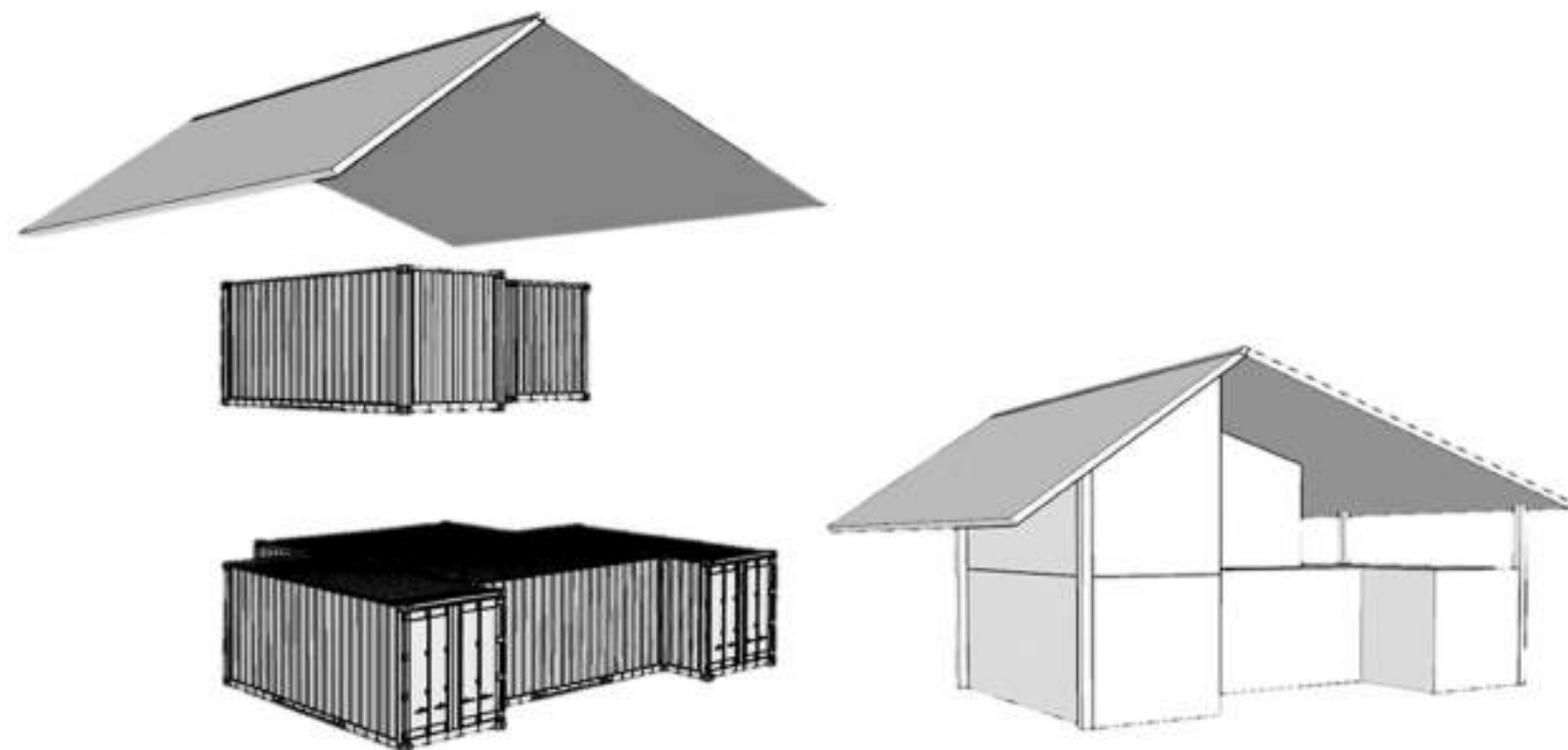


Nature and surroundings  
Google



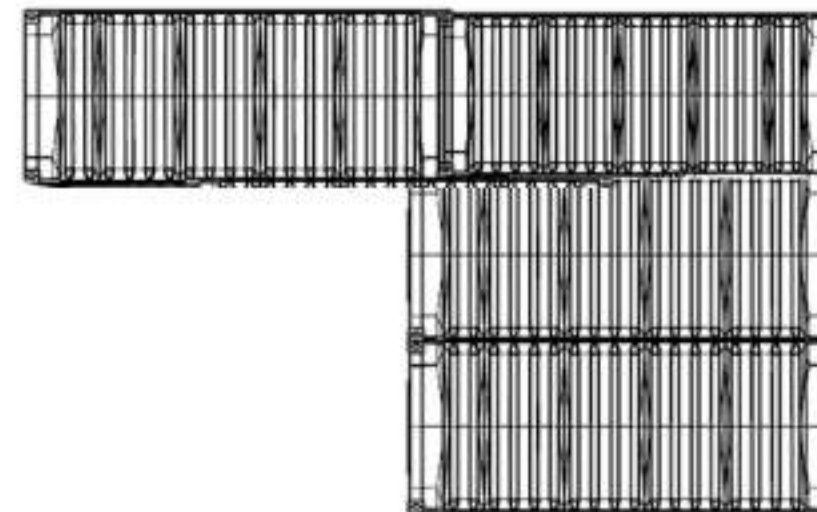
# THE BUILDING PLAN

The houses are constructed by 10 shipping containers in order to make the building and execution easier and more sustainable. Each of the houses is 132 square metres of dwelling space. The bedroom beds are on platforms on the ground floor of the houses, which allows the insertion of the 880x500x700mm bee hives under the beds for the Apytherapy. All of the building materials for the house are natural sourced materials in order to keep the honey bees safe.

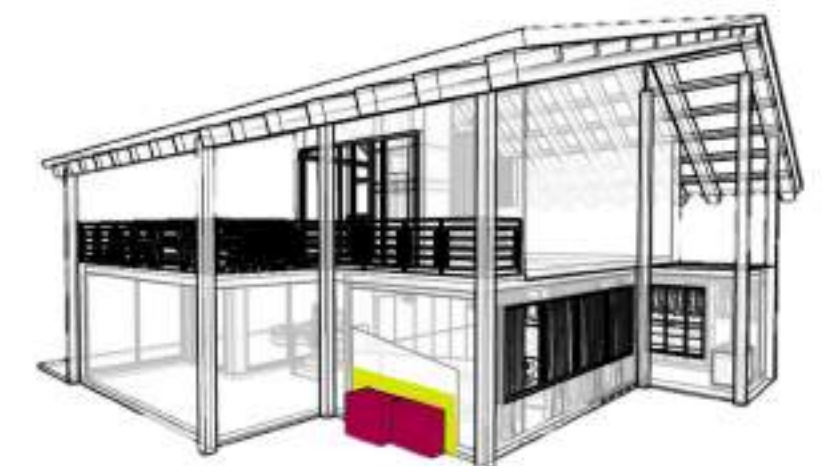
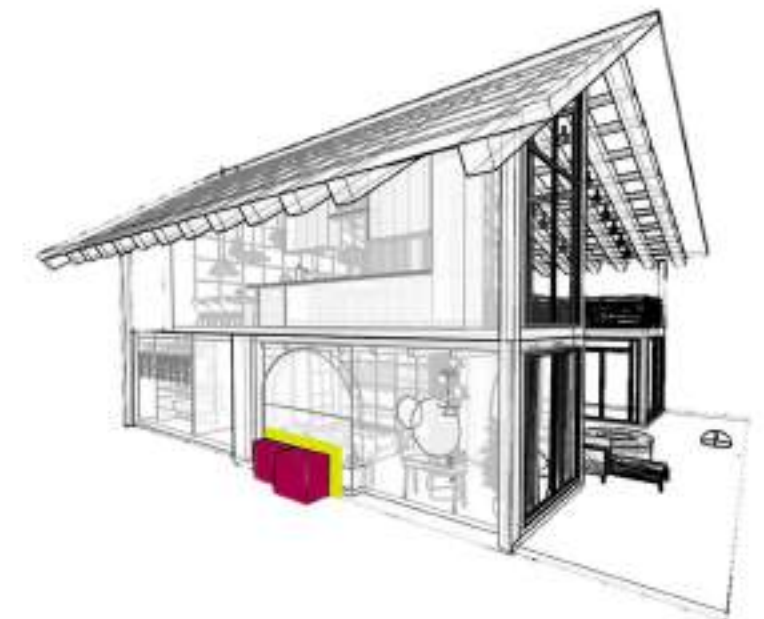
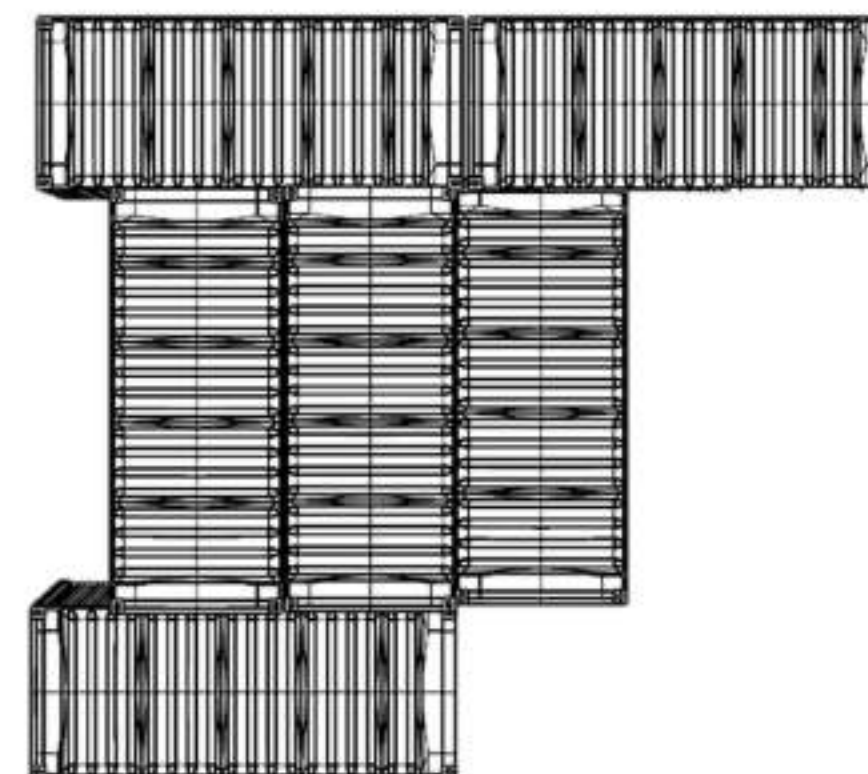


Stacking of the Shipping Containers

Top Floor Shipping Container Plan



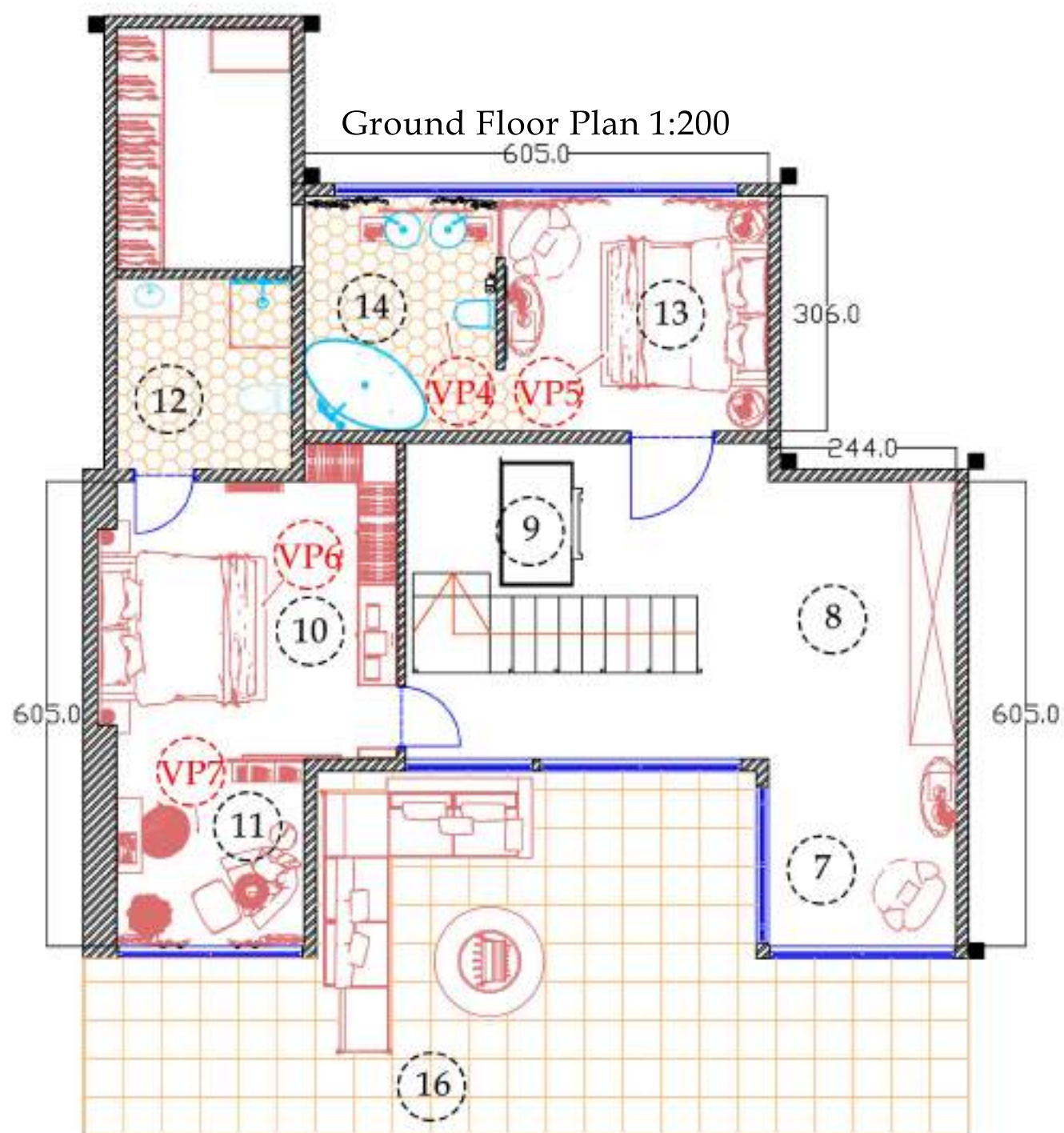
Ground Floor Shipping Container Plan



Bee Hives Fitting under the beds



# THE HOUSE



Bedrom 2: View Point 4



Bedrom 2: View Point 5



Bedrom 1: View Point 6

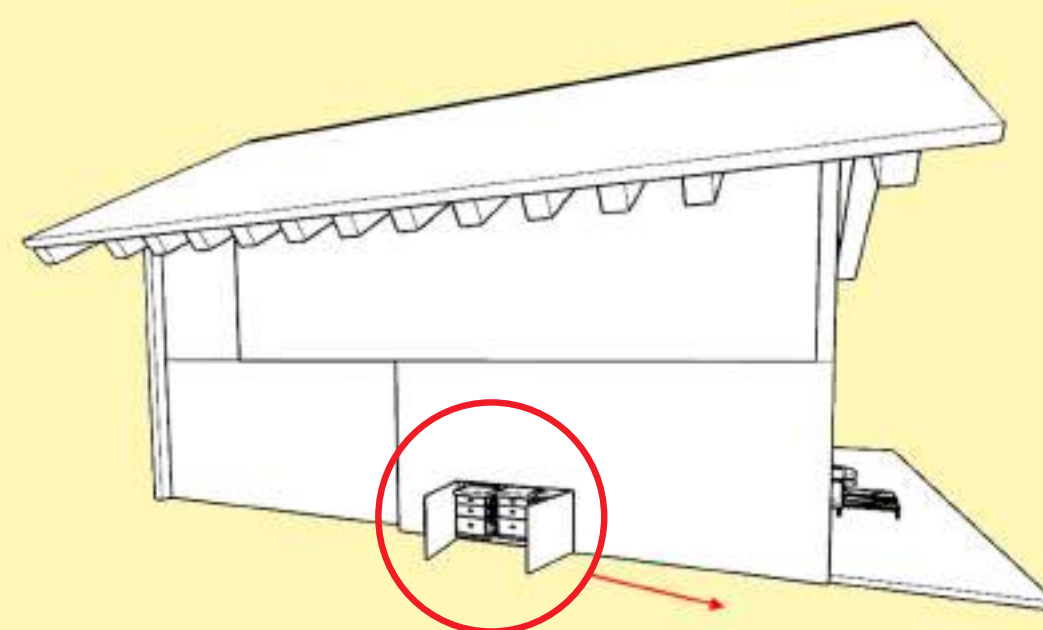


Bedrom 1: View Point 7



Exterior

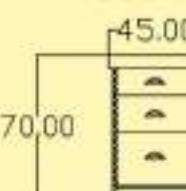
## Bee Hive Beds Details



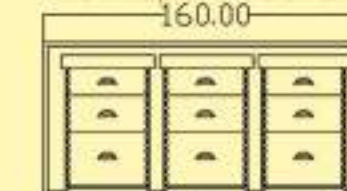
### Exterior doors



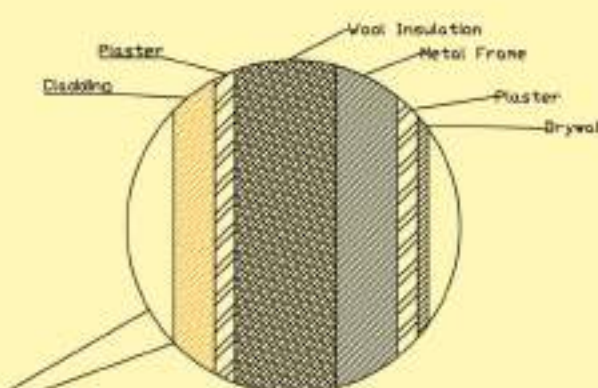
### Bee Hive



### View open doors



## Wall Section Cut



2.00

### Bed Side View

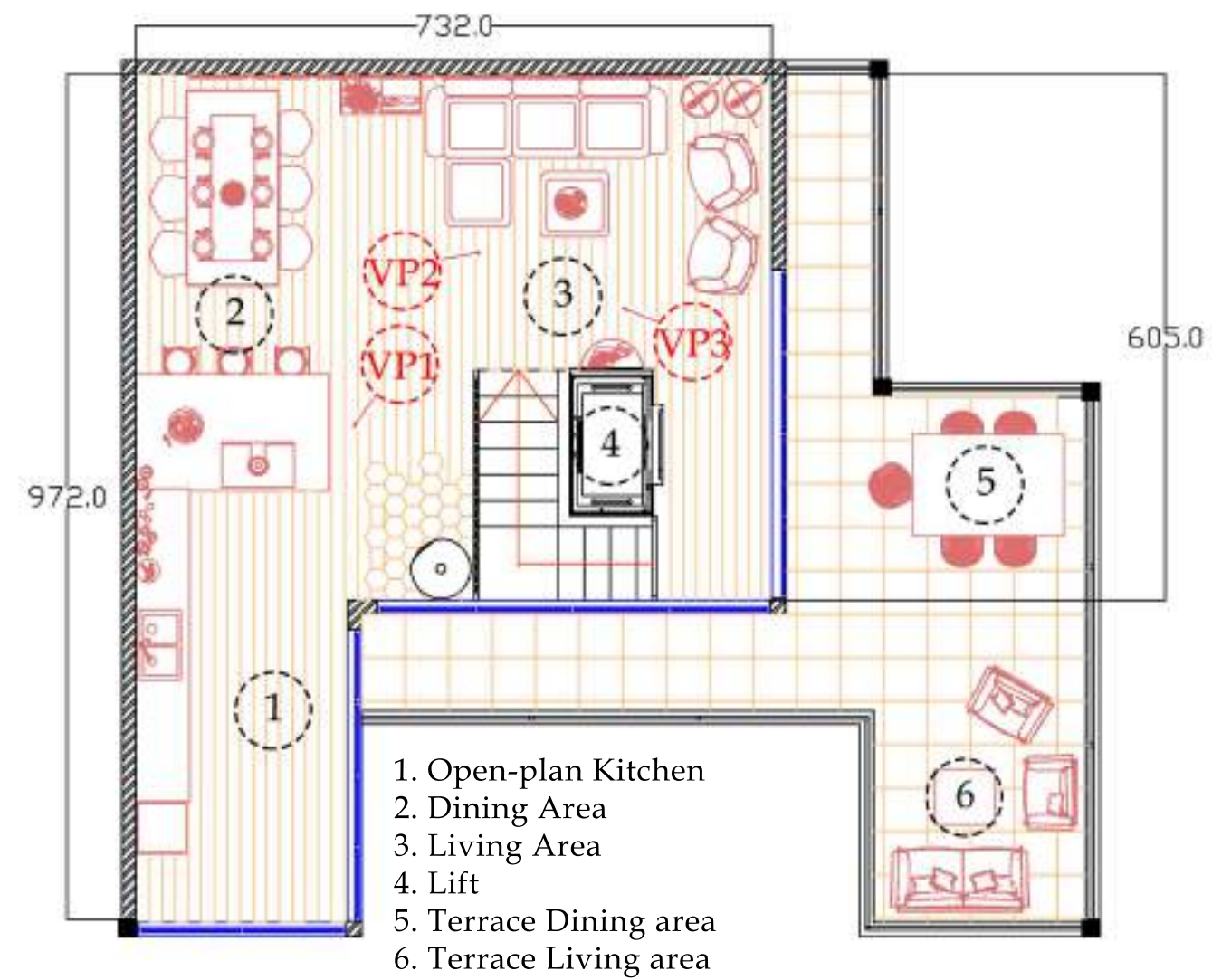


80.00



# THE HOUSE

Top Flor Plan 1:200



Exterior



Kitchen: View Point 1



Living room: View Point 2



Living room: View Point 2



# GROUND S

The Central Hub accomodates a reception desk for the houses, a honey product shop and a lounge area in the main interior available to the public. In the private part of the interior there is a Staff room and storage space for food and inventory. The exterior of the Central hub offers the comfort of outdoor seating huts with fire pits, outdoor kitchen for food entertainment for the guests featuring local cooks and restarants serving local foods. The kitchen is equipped with a Wood Oven and a Barbeque.

Central Hub Interior



Inspired by “House Behind the Roof  
By: Superhelix Pracownia Projektowa



# SPA



The Spa facilities offer the luxury of an outdoor spa area with private showers, sauna and hot tubs. The hot tub is designed to be easily accessed through doors to accomodate people with disabilities. The private Spa areas are devided by vegetation.

