

THE HOT HOUSE/ CARDIFF

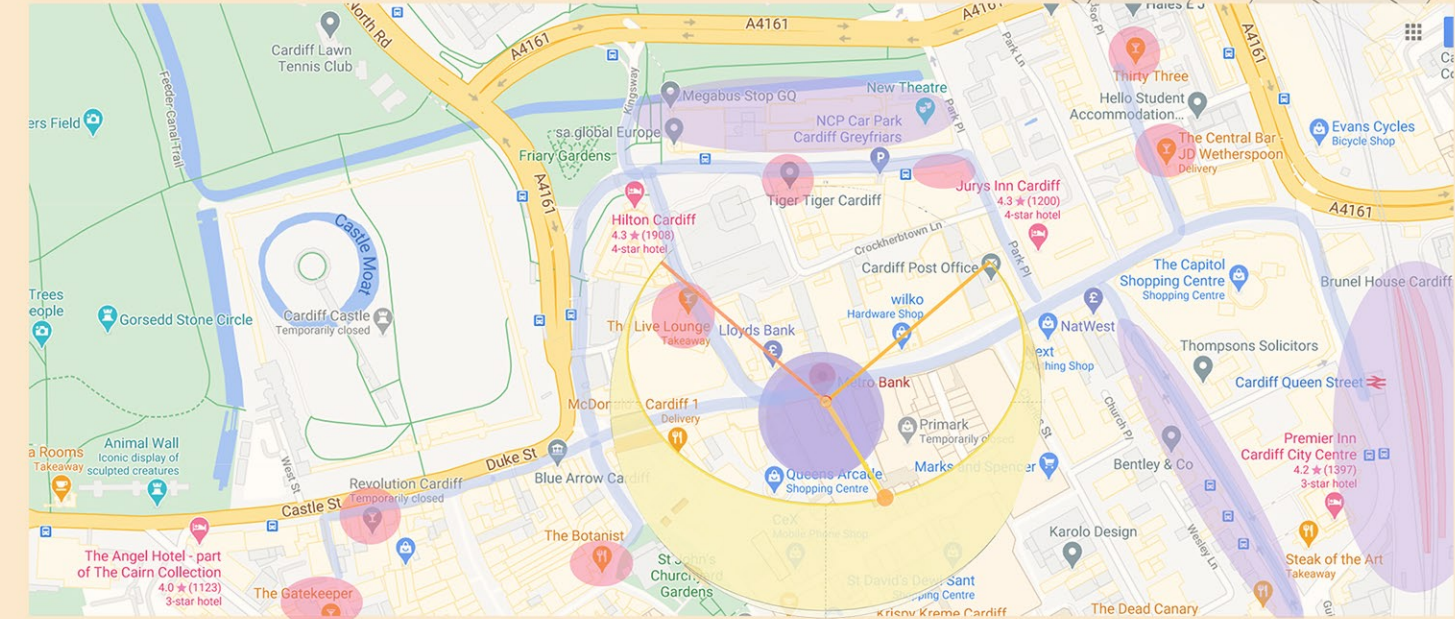
BRIEF

To create a safe space for women to enjoy food, drinks, and relaxation. The building has been redesigned from a bank, to a tropical themed hot house and cocktail bar for women over 21. The building will be made up of the ground floor, a mezzanine overlooking the main space, a multifunctional space on the second floor and a bookable hot tub/ spa experience on the third floor.

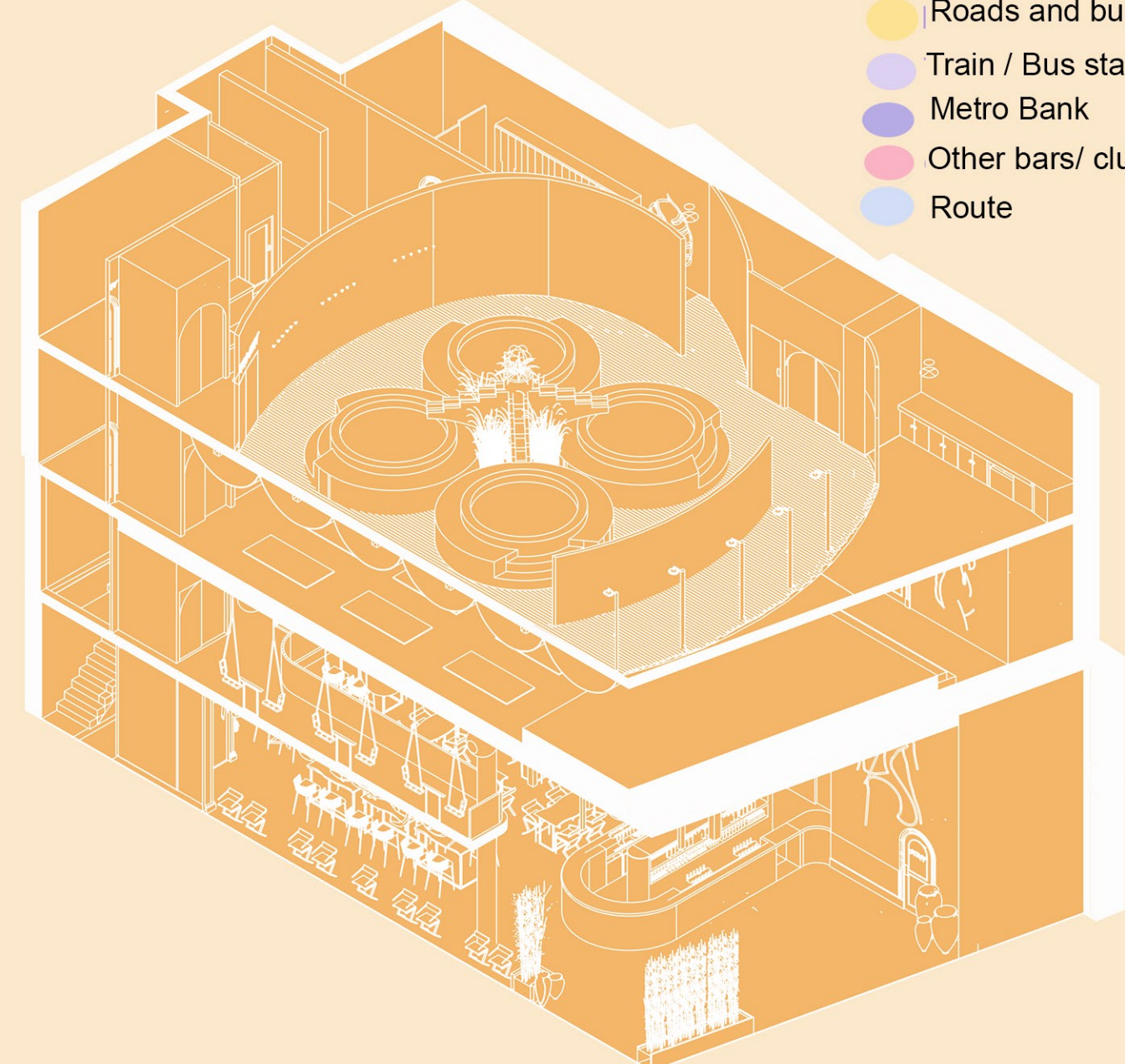
The Metro Bank is in the centre of Cardiff City, located on Queen Street. It is central to all other bars and clubs, making it an ideal location as it is on route from one to another. The building was recently knocked down and rebuilt with a new modern outcome. Made up of four floors and a basement, there is plenty of room for a multistorey experience for women.

The inside of the building has a large reception area as well as a mezzanine floor which has been transferred into my design and modified to fit the scheme of the space. Although the interior is modern, a lot has been changed to follow the concept of my design.

The outside of the building will not be changed as it has only just been built and its aesthetic will work nicely as a part of the scheme. The windows on the top floor will be removed as they are not needed in this space due to the new glass dome on the top of the building as the use of artificial light. This will also make the space feel more enclosed and secure for users.



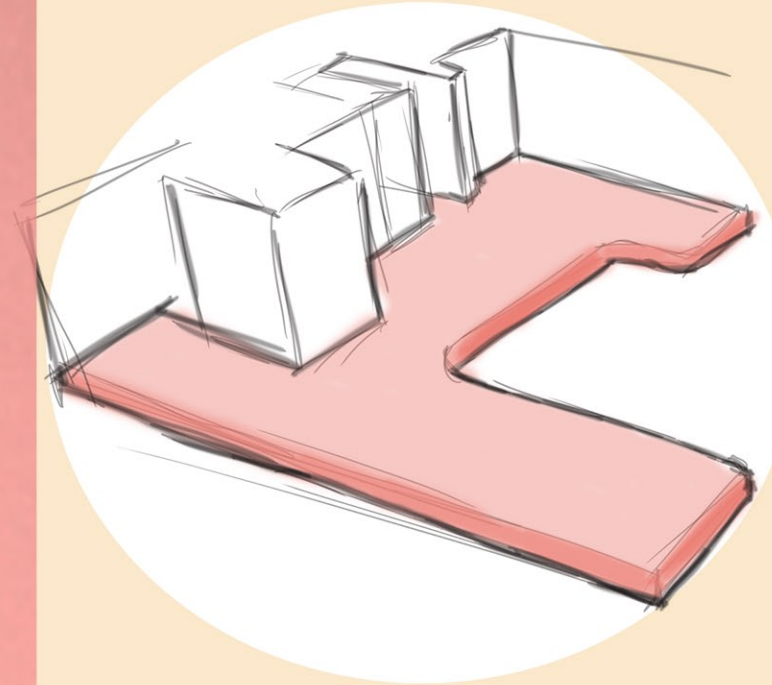
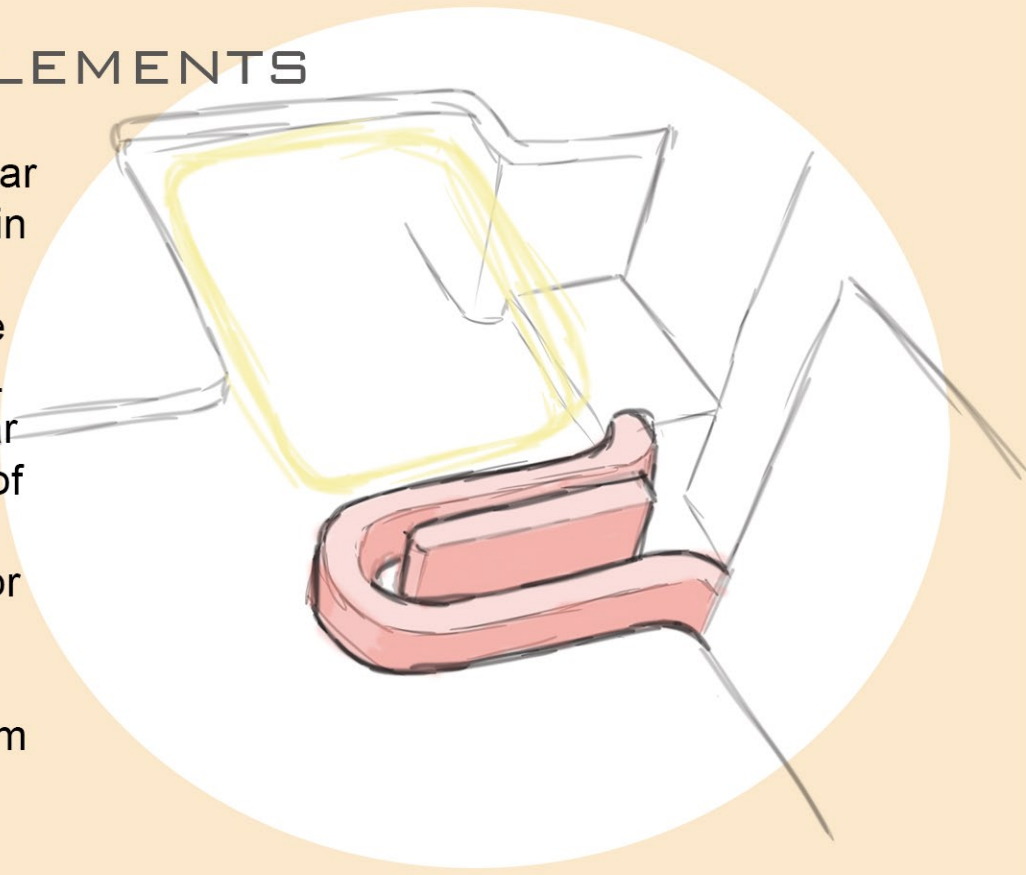
- Roads and bus stops
- Train / Bus station, Taxi Rank
- Metro Bank
- Other bars/ clubs
- Route





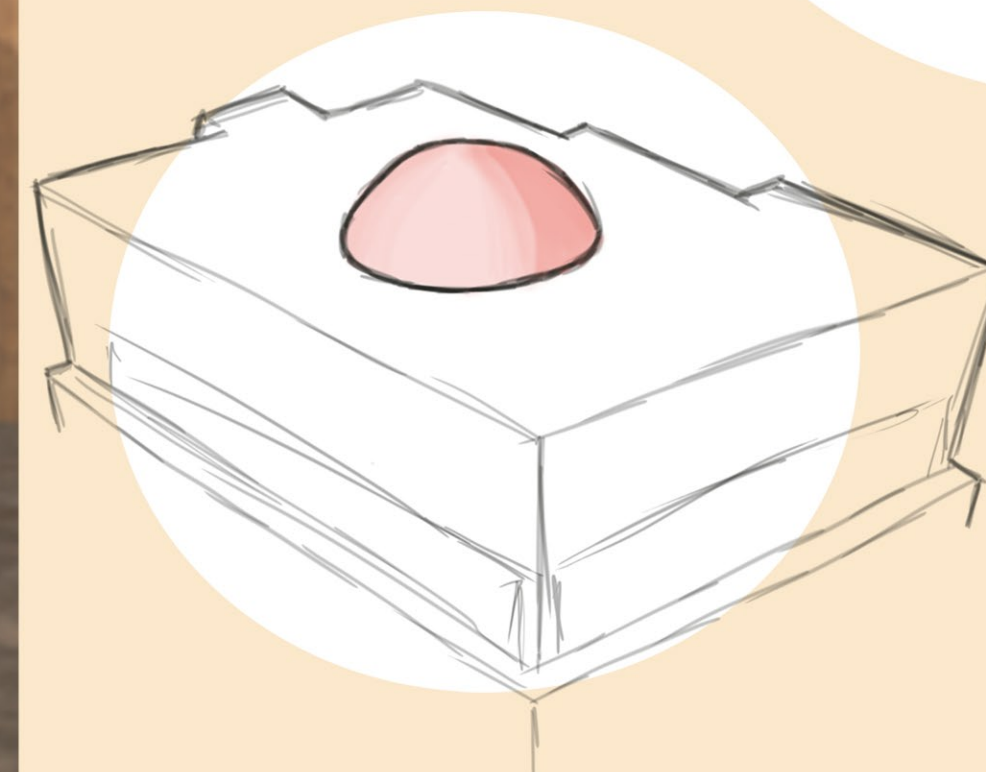
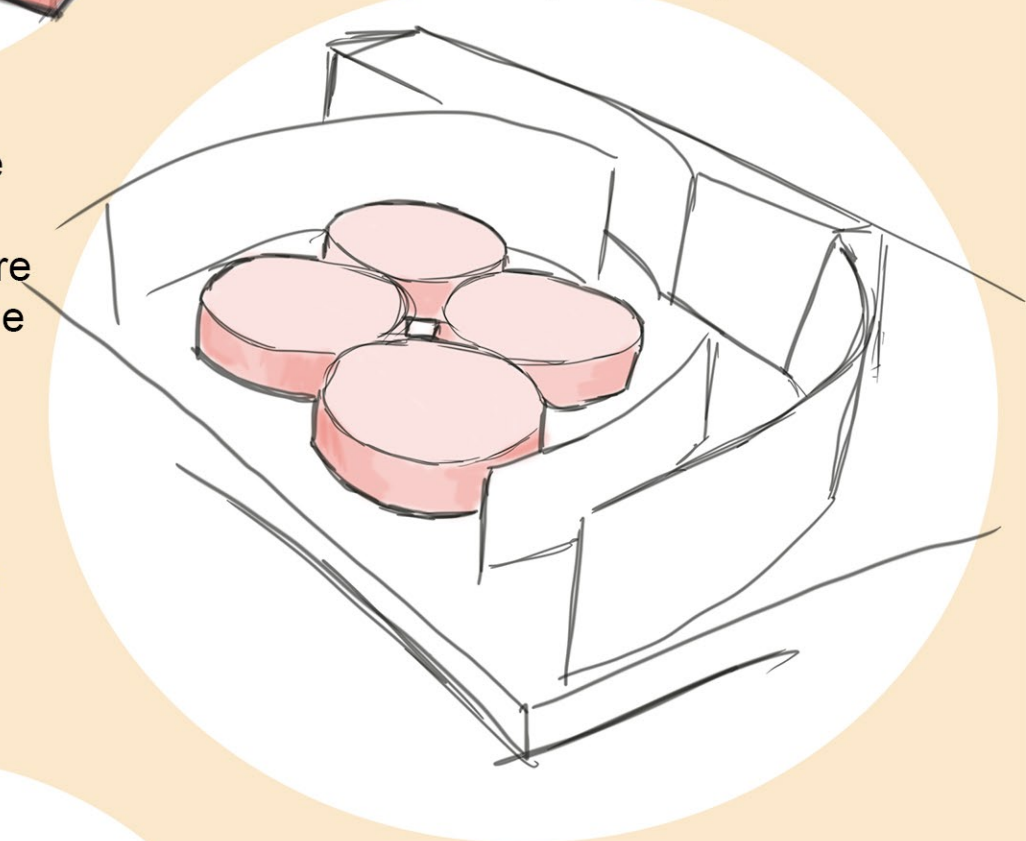
KEY DESIGN ELEMENTS

The first key element is the bar on the ground floor, as seen in red. Its large size and shape breaks up the space from the reception area to the seating. Users must go around the bar to move throughout the rest of the building. Its shape does not disrupt the rest of the floor as its the curve of the bar echoes the curve of the mezzanine floor allowing them to flow together.



The second key element is the mezzanine floor that flows with the ground floor bar. This is a key move within the design as it allows the space to become double height while still making use. The mezzanine is held up with a large column as well as the help of the rooms below that follow its shape. it also allows for additional seating in the space.

The third key element is the use of hot tubs on the third floor of the building. They are a key element of the scheme and their presence has allowed the outcome of the space to develop from the nightclub it was originally thought to be, to a wellness space for women to enjoy and feel safe.



The fourth key element is the large glass dome on the roof of the building above the hot tubs. The top floor has no other windows as a way to protect the women and allow additional safety to those using this space, so the use of a roof that imitates that of an orangery still allows natural light into the space while maintaining power and safety for the women within.

FLOOR PLANS

MICROTECHNICS



I have chosen to focus on the ground floor bar as this is a key element to my design and this will allow me to understand the structure as well as the space as a whole. The bar is made from plywood beams to make the inner structure. This is supported with plywood panelling within the structure.

The plywood allows the curve to be easily created and covering the outside in this makes it easy to be painted or changed. The top of the bar is covered with a marble top and the outside of the bar is covered with a darker wood. The hollow structure allows pipes and electronics to run within easily while ensuring they are out of the way and hidden.

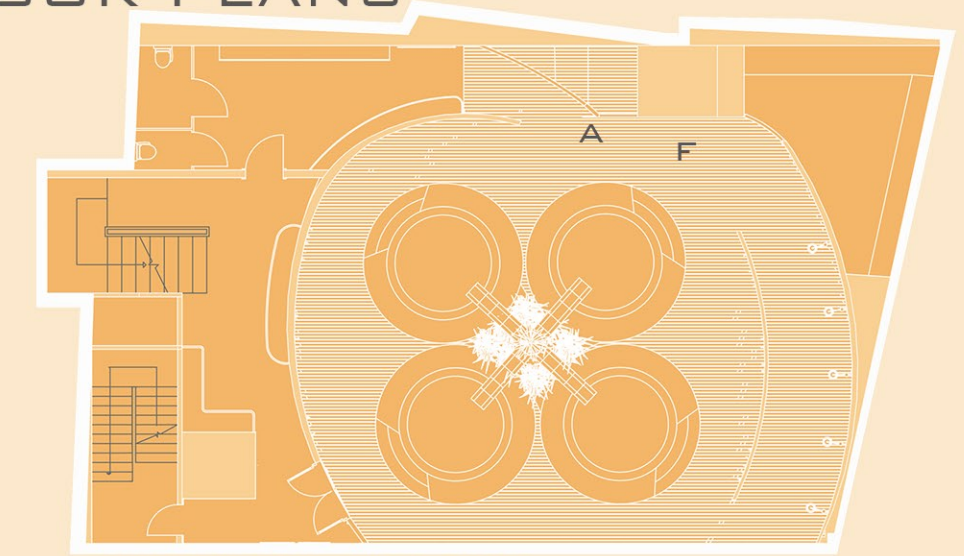
FLOOR PLAN OVERVIEW

The basement is for staff only, it includes offices, a kitchen, laundry / plant room and staff room.

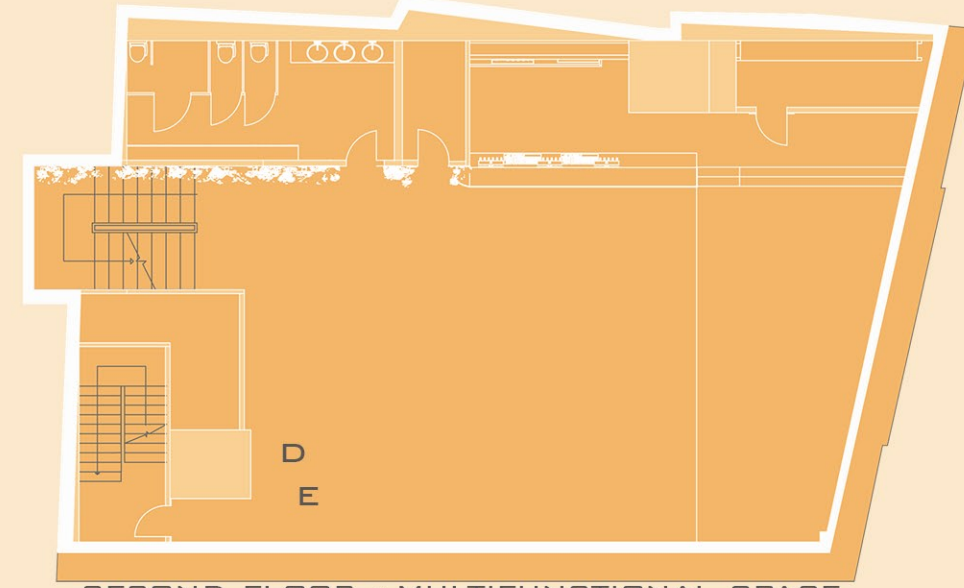
The ground floor is the bar/ seating where clients can come to drink and have food, the mezzanine allowed additional seating with a view of the floor below.

The second floor is a multifunctional space designed for yoga classes, women's inspirational talks, and event hiring.

The third floor is the hot tub spa experience where women can come and relax after a session or of an evening.



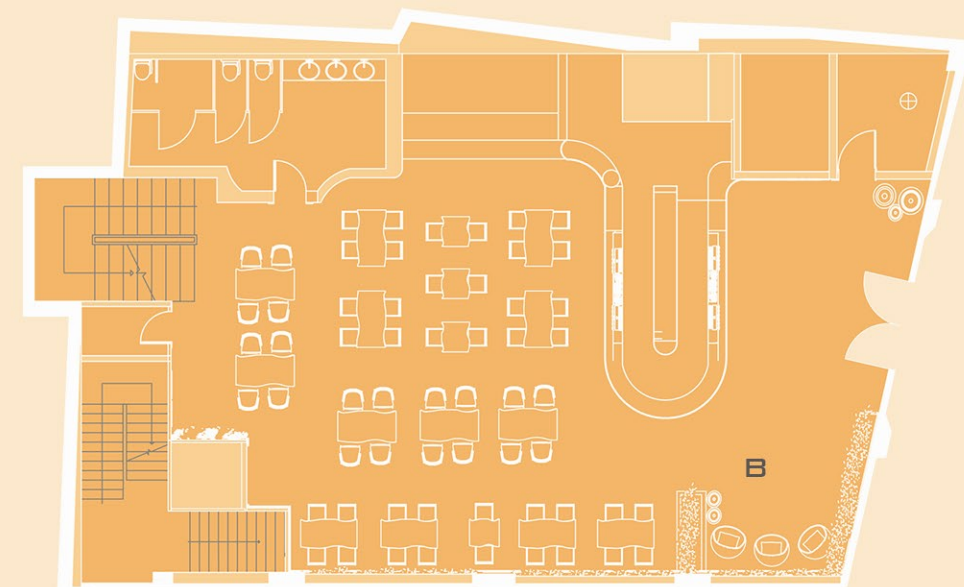
THIRD FLOOR - HOT TUBS



SECOND FLOOR - MULTIFUNCTIONAL SPACE



FIRST FLOOR - MEZZANINE SEATING



GROUND FLOOR - BAR / SEATING



BASEMENT = OFFICES / STAFF SPACE

SECTION 1



The biggest challenge during this project was it connect with the tropical inspiration for this project and show my appreciation for it, without it be cultural appropriation. Each element of my design needed to channel the island/ tropic theme while keeping respectful and understanding. The design is sophisticated and exciting without the tacky overused 'tiki' experience.

SECTION 2

