

Concrete cottage; the proposal of space and body, individual Saffron carpenter

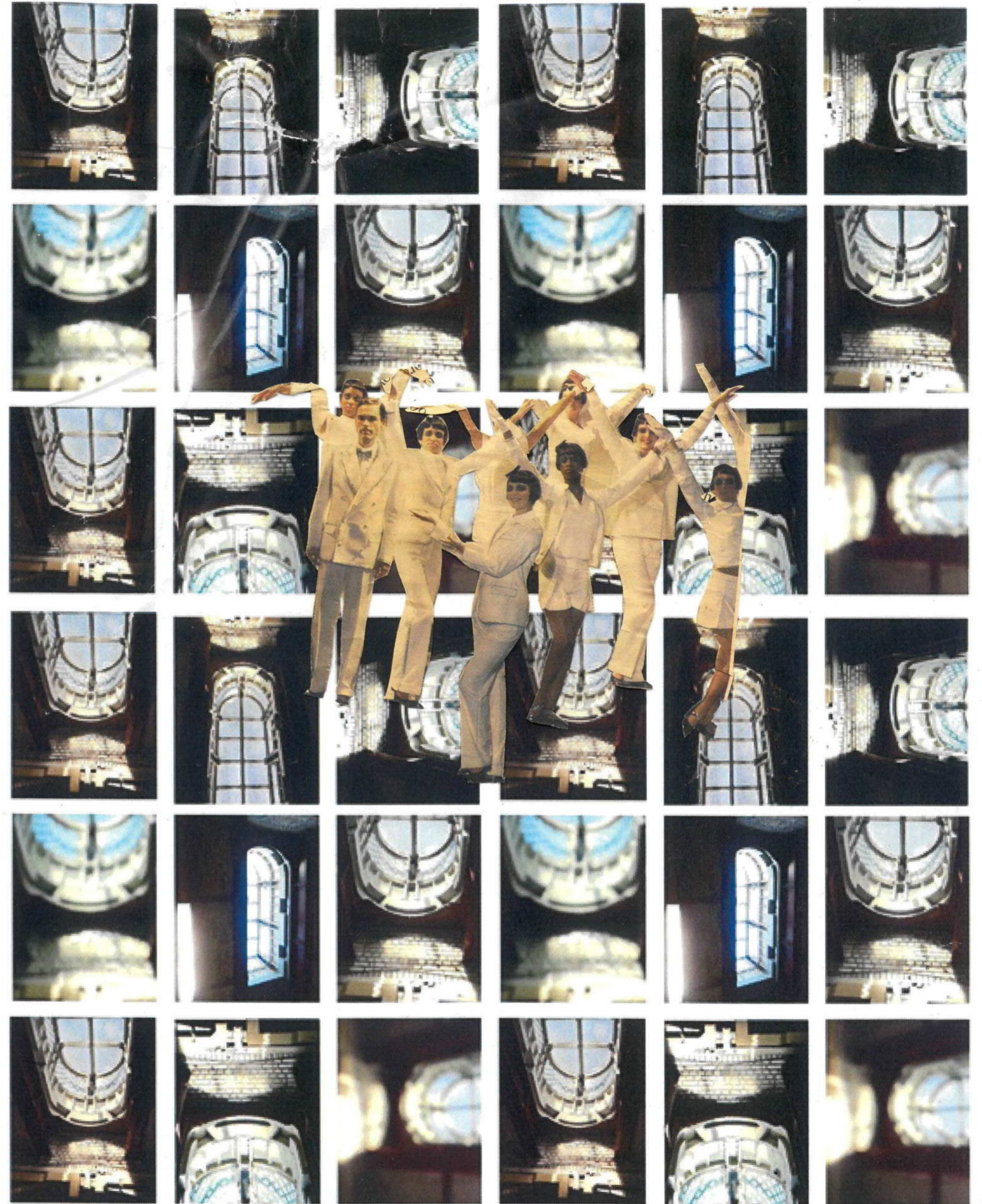


Given the brief of designing a public toilet located down with in the South Kensington pedestrian tunnel. My scope angles towards the taboos and unspoken uses which tail our perception of public toilets for as long as they have existed.

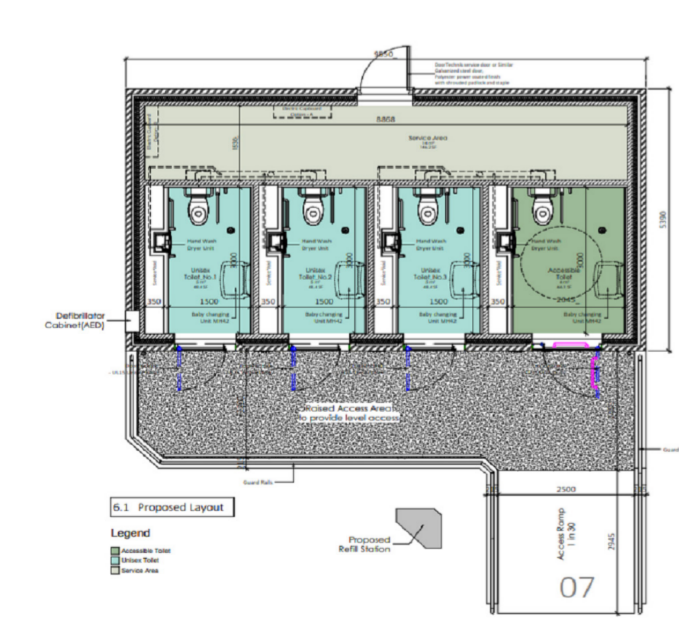
*As people bodies angled, simple and simple as people as organic material.*

Tailoring my design root along with notions of cottaging, prostitution aswell as constant themes of sexuality and repression led me through to an eye opening process of design.

"Providing bathrooms means welcoming the world and being okay with it," - Leslie Lowe



Artwork from project



Anti sex toilets installed in Wales to combat the 'pandemic'

Access area behind for maintenance of anti sex equipment installed (2019), resembling the photograph of hiding space police officers would hide in toilets and watch secretly to catch out gay men cottaging (1980s)

Its without neglecting the uses we dont talk about, i wanted to design a space which does stigmatise nor vilinise the people who rely on these places for a living in order to survive, or who once relied on spaces like this to resist repression

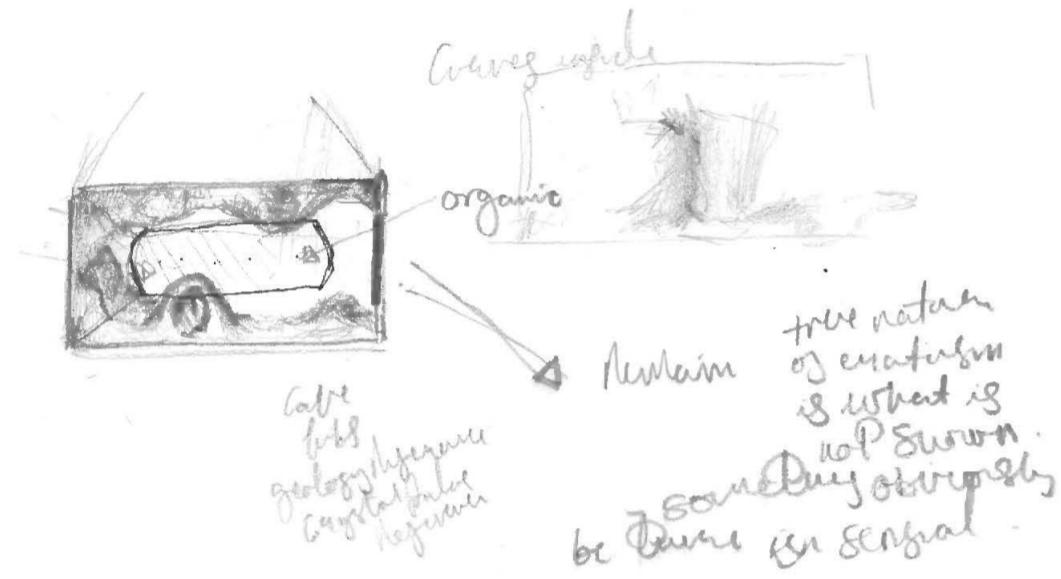
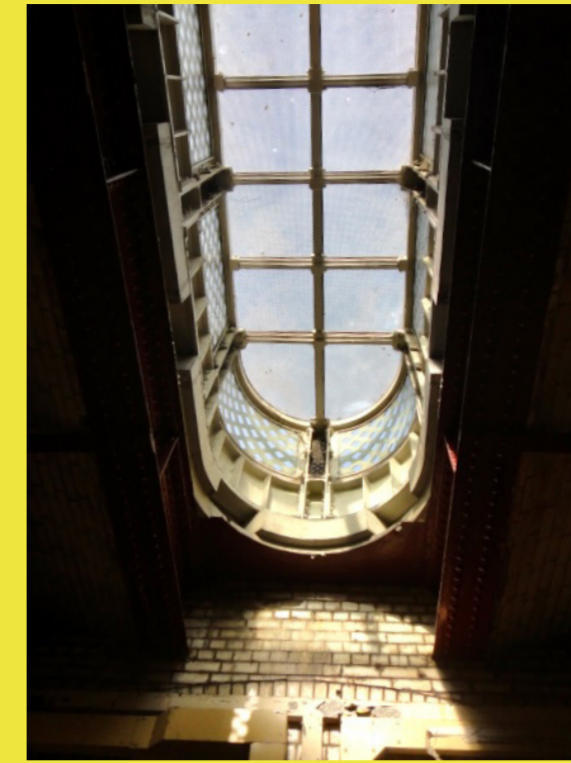




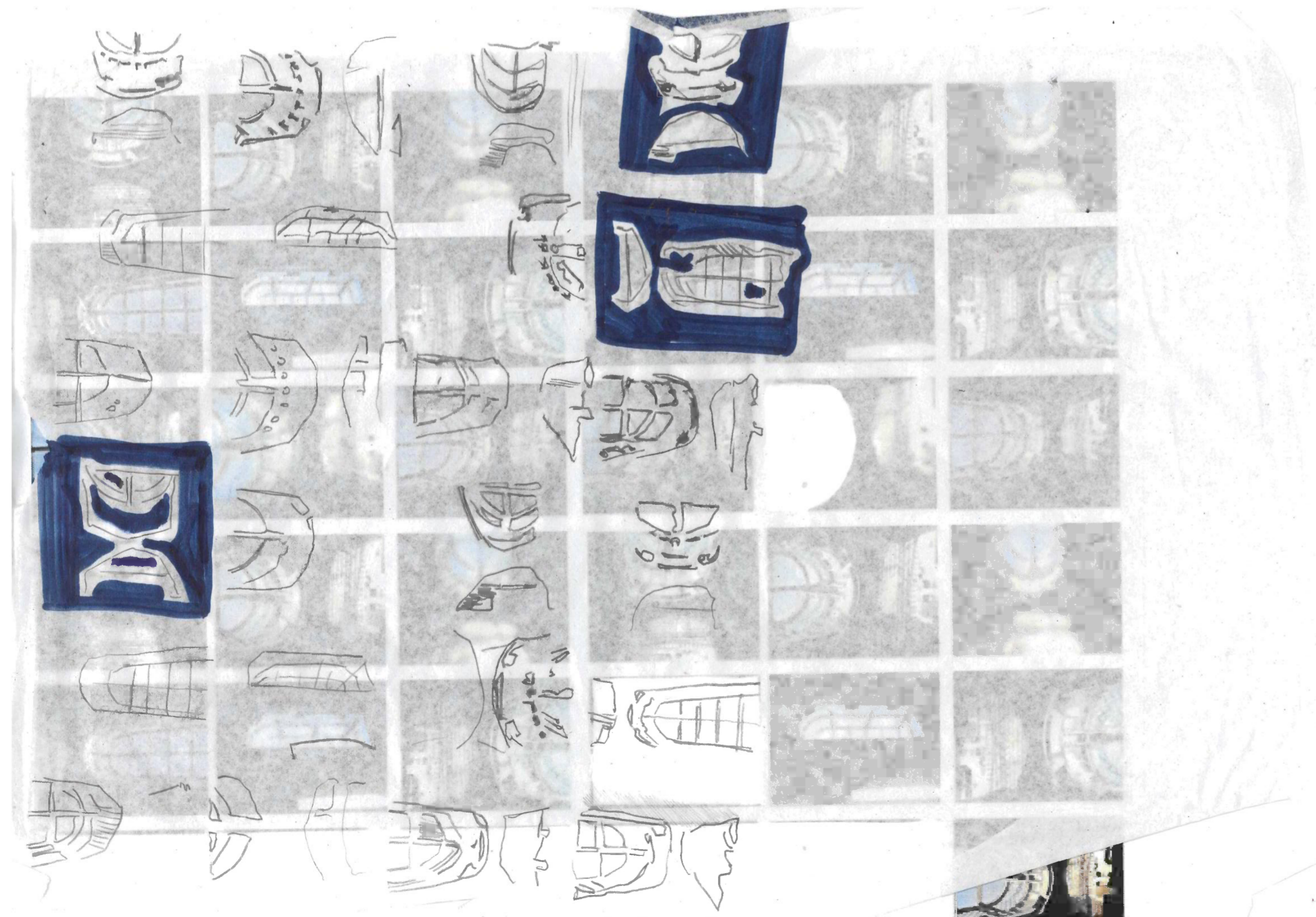
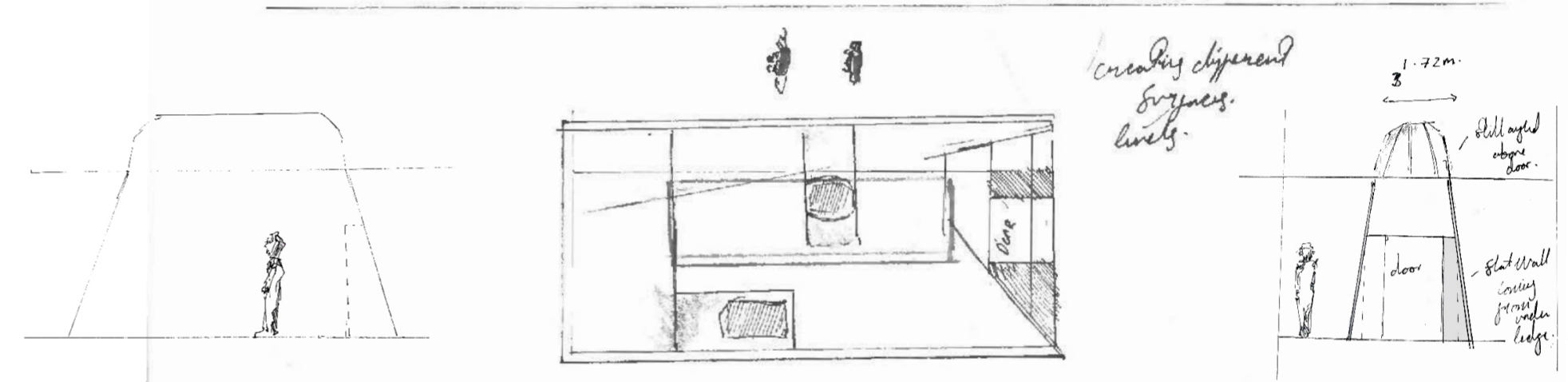
The space, already being underground seemed intimate and awkward to walkthrough; the echos and harsh lighting seemes to make people feel exposed and vunerable to the perception of others around. already pointing a nod to possibilities of taboo behaviour awkwardly ignored.

The break in this surrounding seemed to stand out where the ceiling transformed into intricate fragile looking sky lights which dotted intermitantly through out the stretch of tunnel.

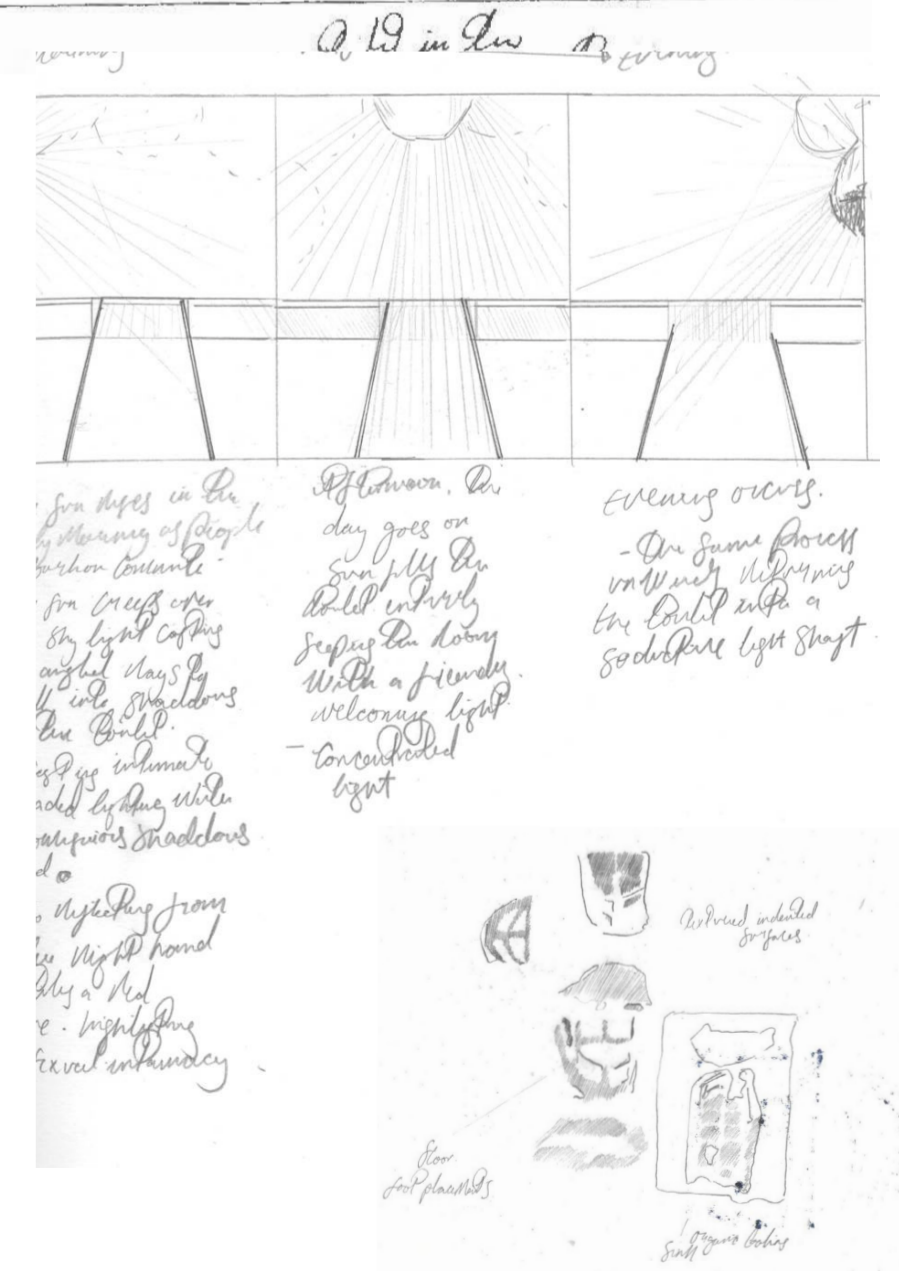
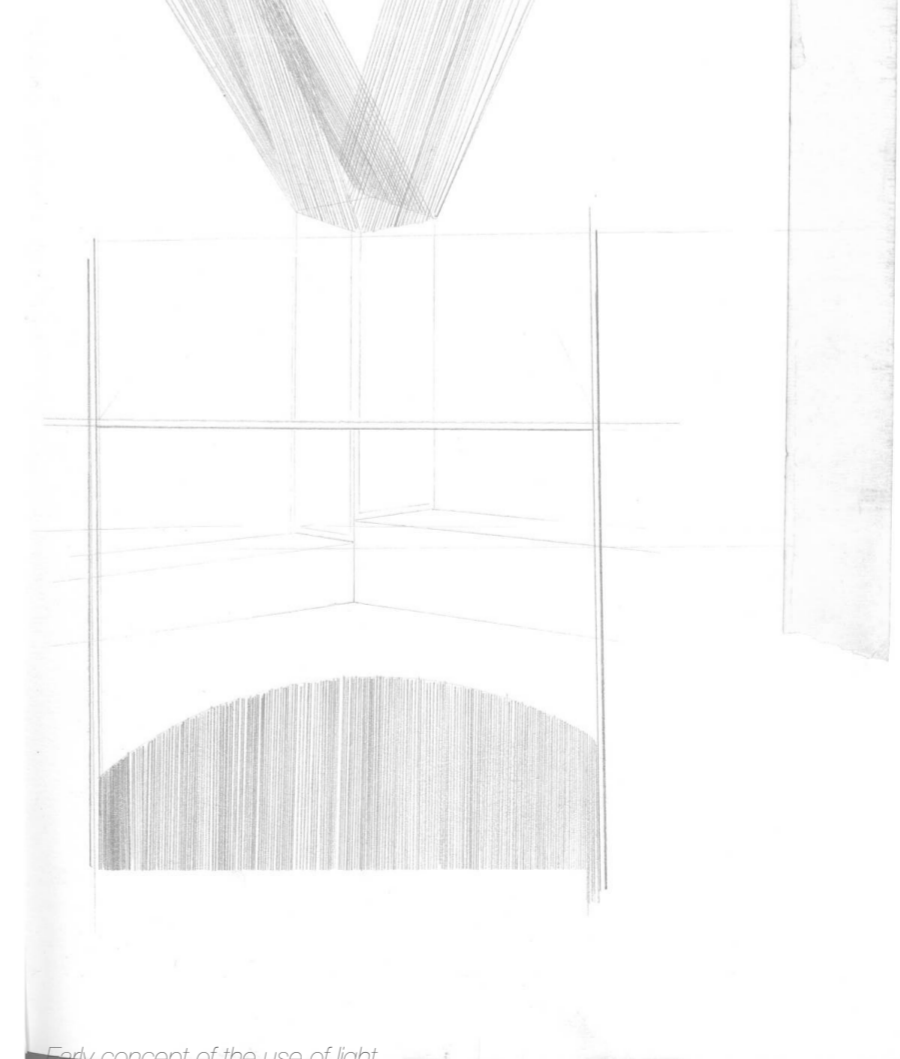
I used this existing architecture as a center point for my design. Utilising the entrance of the light in combination with angles of walls in my design to present the space as a more intimate setting as the sun rises and sets. Times where crusing and frowned upon behavior is heightened.



Initially you think of somewhere you can lie or relax and be comfortable. But also in intimate situations its about exploring a space and interacting with it in a personal way. It shouldnt be made obvious to you as to how it should be used. Whether this is simply to use the toilet or use it to have sex. If you want to have sex use the space in an individual way. I will make the room angualr instread of curved. Curved biomorphic forms are excesively suggestive and typical to suggesting sexual



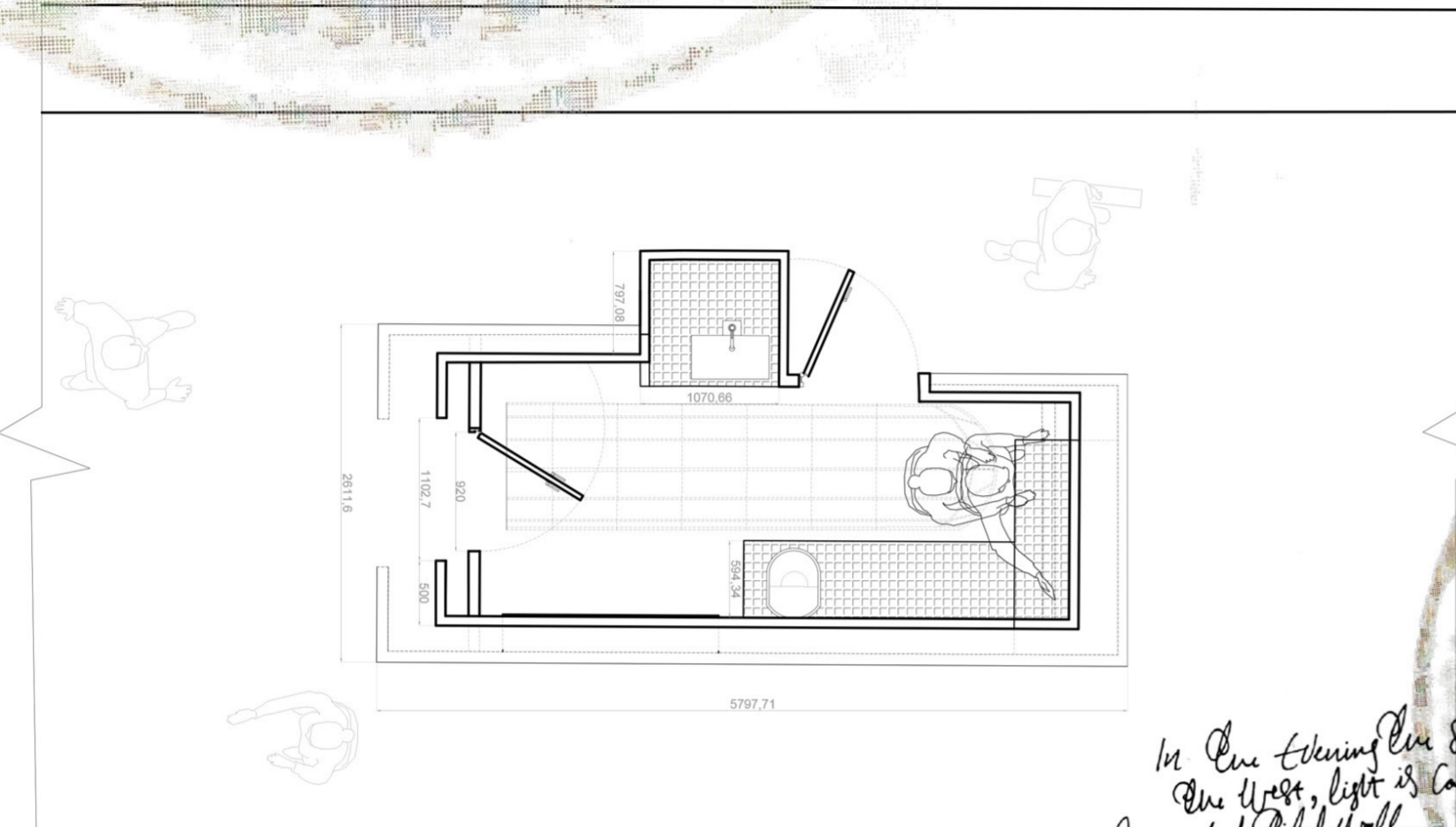
Urb- Bulls which detect someone having sex in them.  
ANTI SEX Bulls.  
Cubical Bulls - unflinching.  
Public Bull - enclosed.



Explanation of the light entering my space. Angular shadows in the evening full sun in the afternoon.

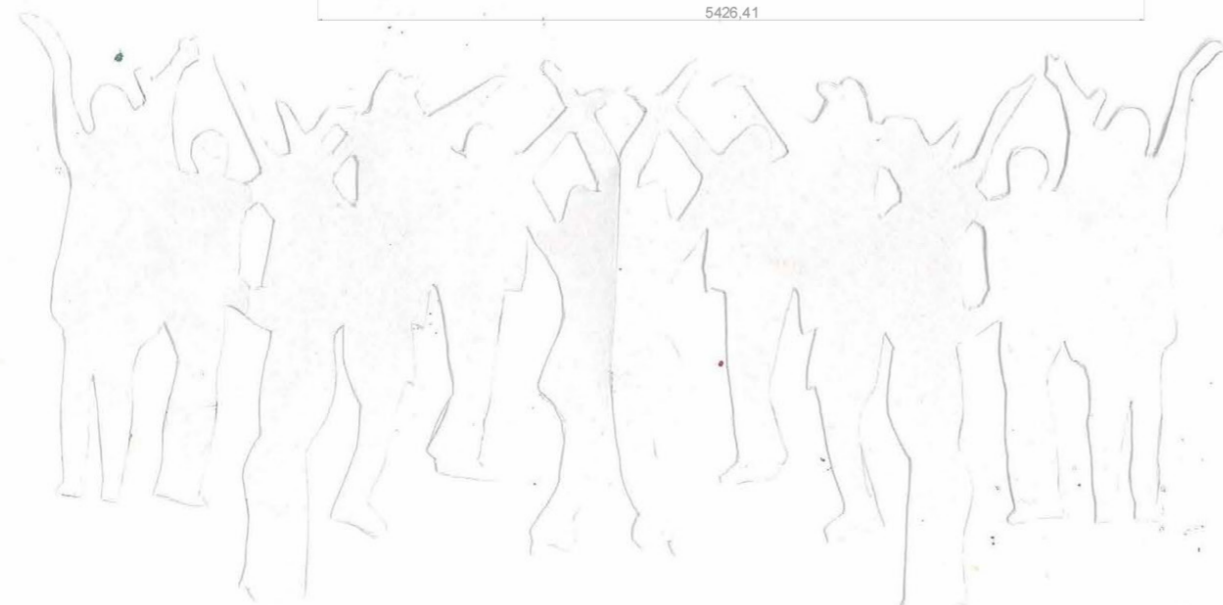
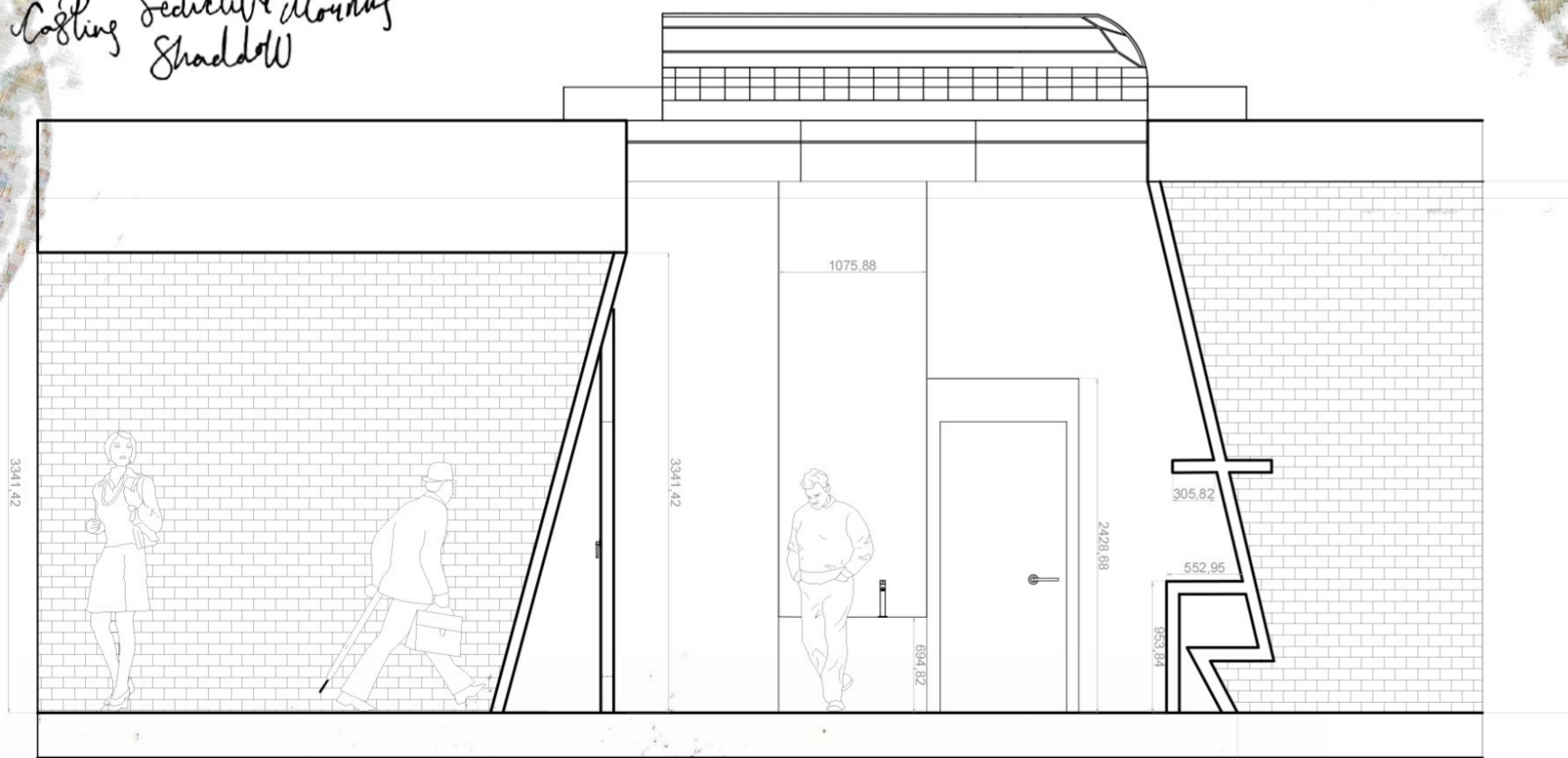


The full afternoon  
sun light enters

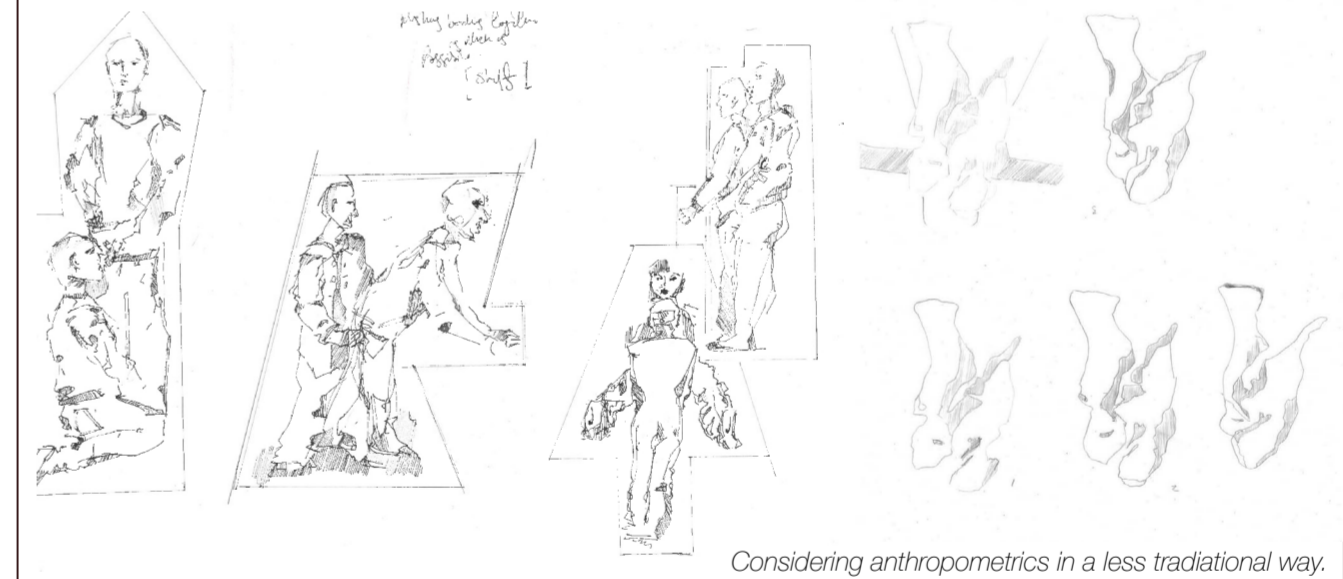
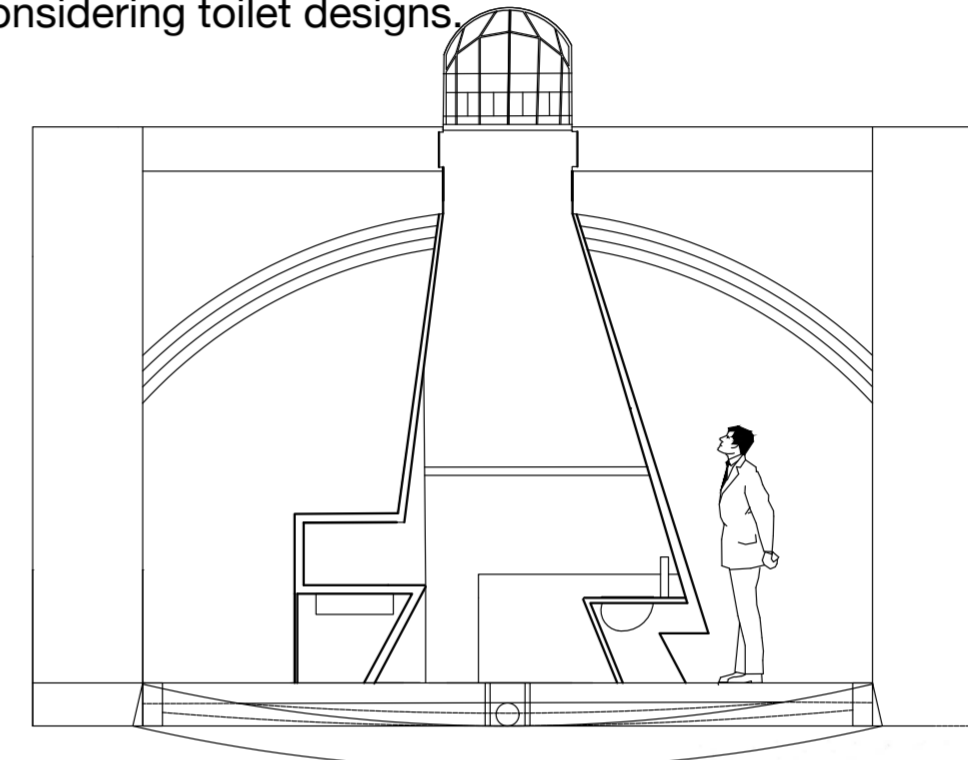


In the evening the sun sets in  
the West, light is cast onto  
large steel tiled wall  
Red light bounces off  
the concrete

Sun rises in the East  
casting seductive glowing  
shadows



The status of sex that is usually considered vulgar and inappropriate is just as avoided in design as it is in conversation. Art however seems to embrace the subject and uses it to express creativity. Themes of sex can be associated with creativity easily but should also be viewed as a right of passage in mundane life; rather than simply a vivid elaborate form of art. Toilets and secret activities such as prostitution and cottaging are just as relevant topics to discuss as the themes of cleanliness and conventional practicality whilst considering toilet designs.

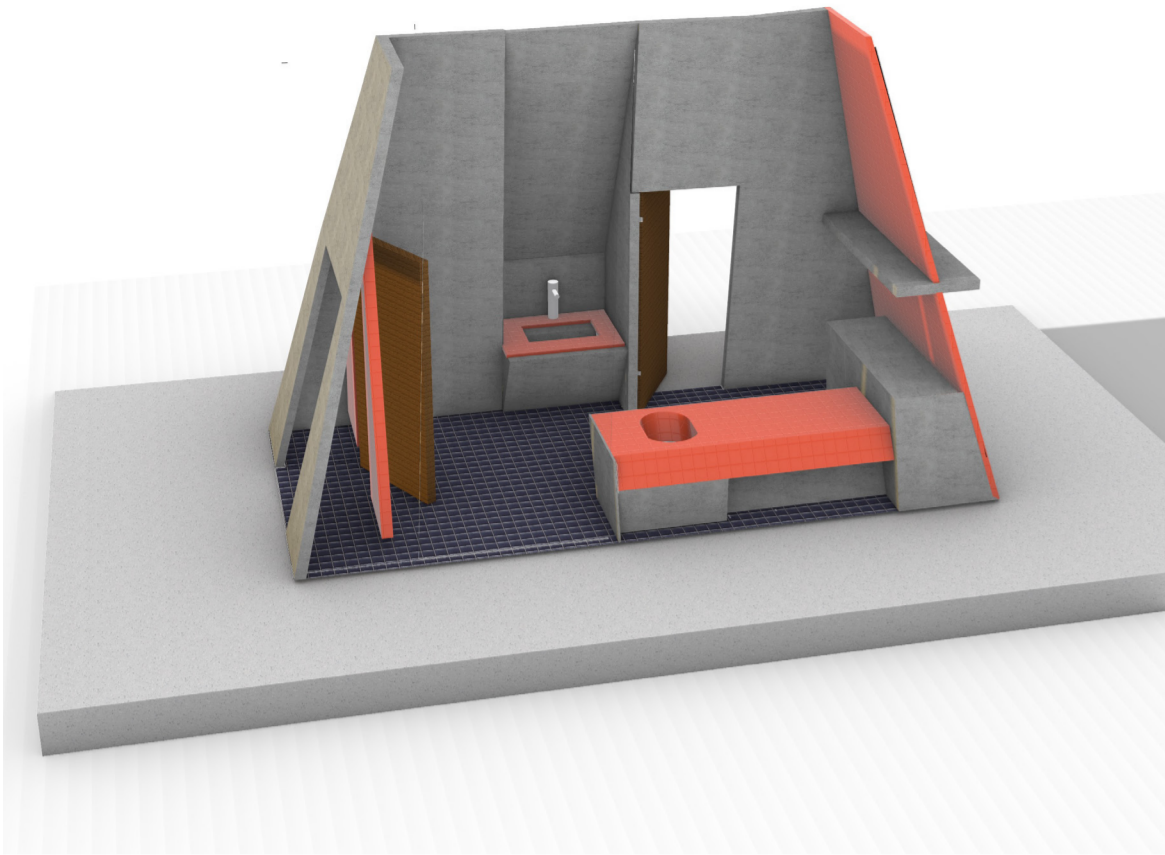


Considering anthropometrics in a less traditional way.

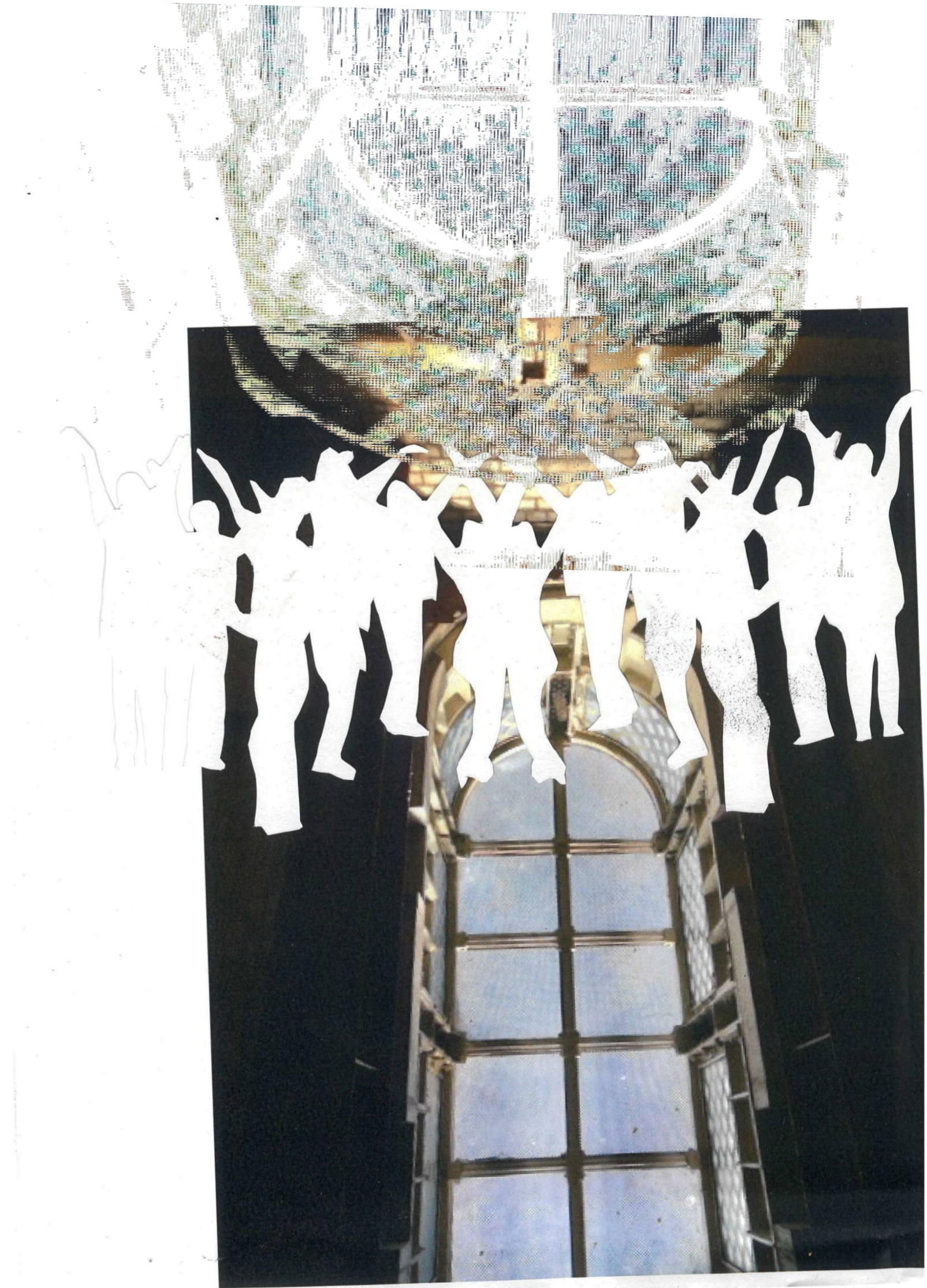
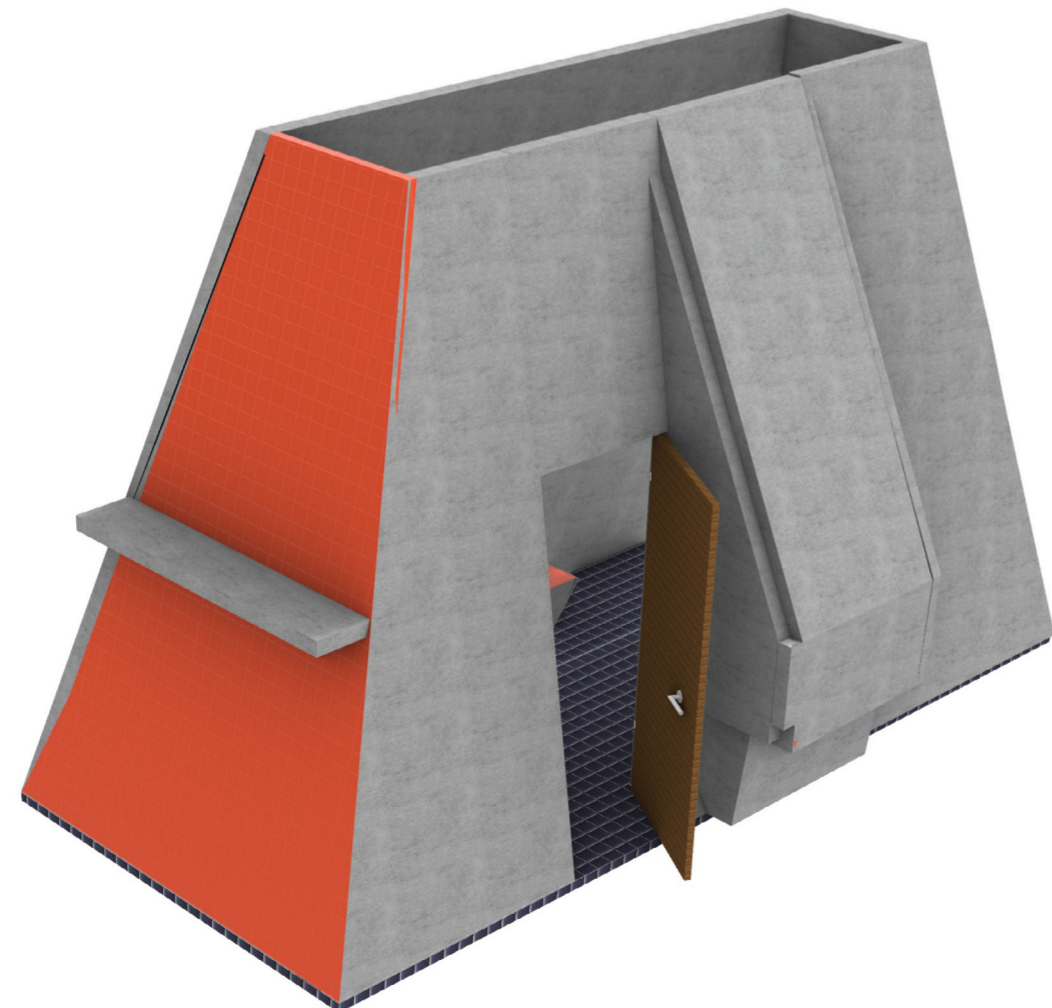
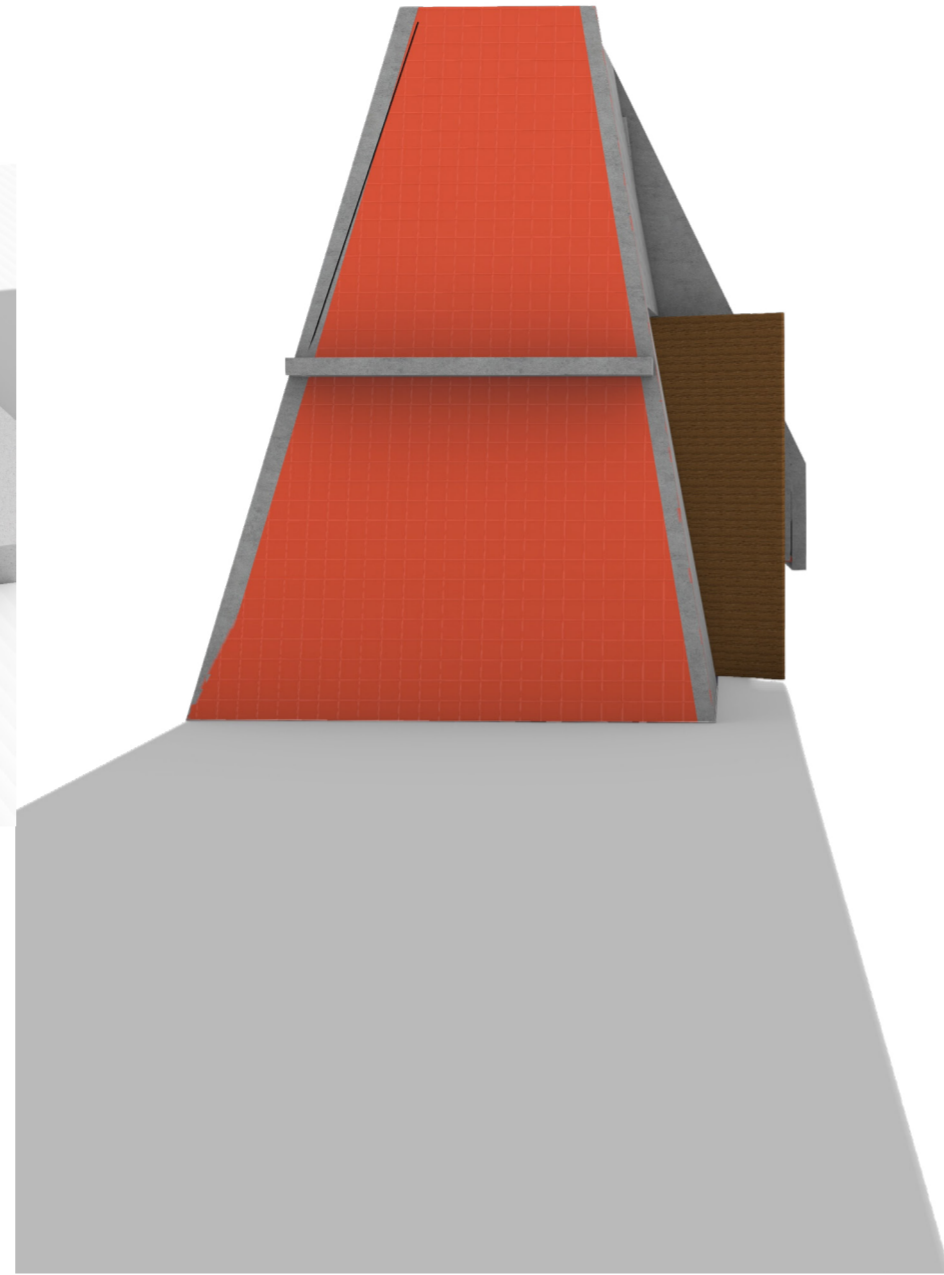
The materials I chose were to contradict a pattern of secrecy and stigma when associated with sex, the concrete enclosure is solid and very visibly like the patterns which society tries to hide. Red tiles are a hint to the red light stereotype when notions sex. The glossy finish on the tiles reflect light and the large red tiled wall will reflect back a red tinge in the night time when the sun is allowed to directly set entering into the toilet and bouncing off the red glossy surface.

From a forward facing section, it is more obvious of the fallic shape of the space, unassumingly as you would only be able to tell this shape if you already knew of the curved skylight now enclosed inside the new space. Its not obvious but a nudge to the concept of the toilet.





The space is based off of human positioning and also to act as a stage for daily passers by. The concrete shell will not be moved and the presence of a lesser talked about portion of society will not go away and should be catered to just like the rest of us. There is irony aswell in the materiality, the contrast with bodily ideas/forms and movement along, with the concrete statue offer questions about why we are so objective about sex.



Description of project:

Sex and using the toilet are the two things that cause the most stir when used in casual conversation, labelled as vulgar and inappropriate, yet these are not two of the most vital human instincts. 'Providing bathrooms means welcoming the world and being okay with it', quotes Leslie Lowe. Themes of sex can be associated with creativity and art easily but should also be viewed normal; rather than simply a vivid elaborate form of art. Toilets and secret activities such as prostitution and cottaging are just as relevant topic to discuss as the themes of cleanliness and conventional practicality whilst considering toilet designs. The placement of my toilet lies beneath an intricate skylight. Consisting of angular, jagged walls that cut down from the edges of the aperture. Allowing a cyclical lighting pattern to be staged into the toilet, progressing from a dimly lit crooked glow welcoming the morning goers, where cottaging is proven to be popular, creating intimacy in the cubical. An afternoon matinee brings down direct sunlight from midday where no walls tarnish, a gleaming illumination of the room suitable for a typical bathroom user. Soon to return to sensually lit as in the morning.