

The Alysham Center, currently at threat, due to top down decisions

Save the Alysham Center!

# On their stage in our VOICE

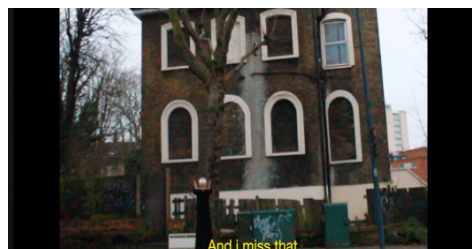
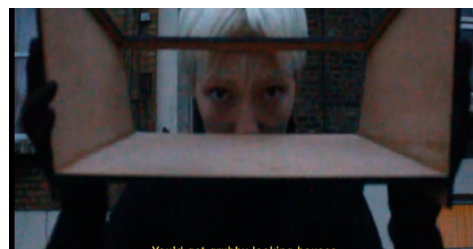
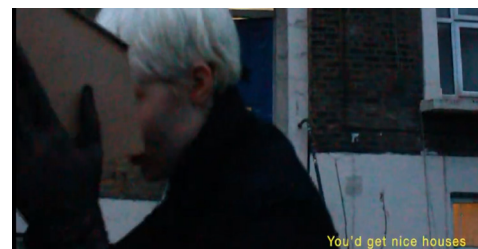
Saffron Carpenter, Camberwell ISD

*This project highlights the value of physical environment, the importance of communication and care for the spaces encapsulated in towns and cities. During my thesis I discussed reoccurring Fascist influence of the way our space is controlled and perceived. Emphasising the lack of bottom up consideration and imput. For a modern day analogy this may be the commercialisation of the high-street, disappearance of public benches, commodification of individual space, or homelessness rising over 150% in the past 10 years. Public space has fallen victim to top down control, and now us to 'public space', which forces us to spend money, is inaccessible, and excludes the vulnerable into homelessness each day.*

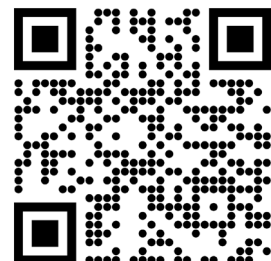
*Though a small step towards the larger aim, this Intervention aims to give a space for each member of the community to discuss ideas and address issues concerning our environment. Subverting the previous fascist narrative centred around hierarchy, this is a re-imagined construction of how we need to employ bottom up tactics to rebuild our own spaces, exalting all levels of society into a community-led project for change.*

*I have injected into my site of of the Safe Houses in Peckham, a communal auditorium to come together and envision a unionised version of public space. To come together in protest. Near my site the; Aylsham Centre, an example of the local community's space at threat.*

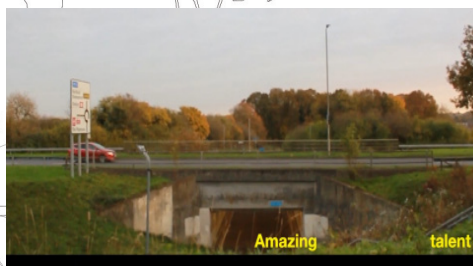
A trapped map of Peckham



Stills from my Thesis film on Fascist influenced spaces. Creating this film made me realise the lack of realisation of real life people that goes into creating public space, and the mininmal designated areas designed to facsilitate just this. When did you last go to your town Hall? Do you even know where it is?



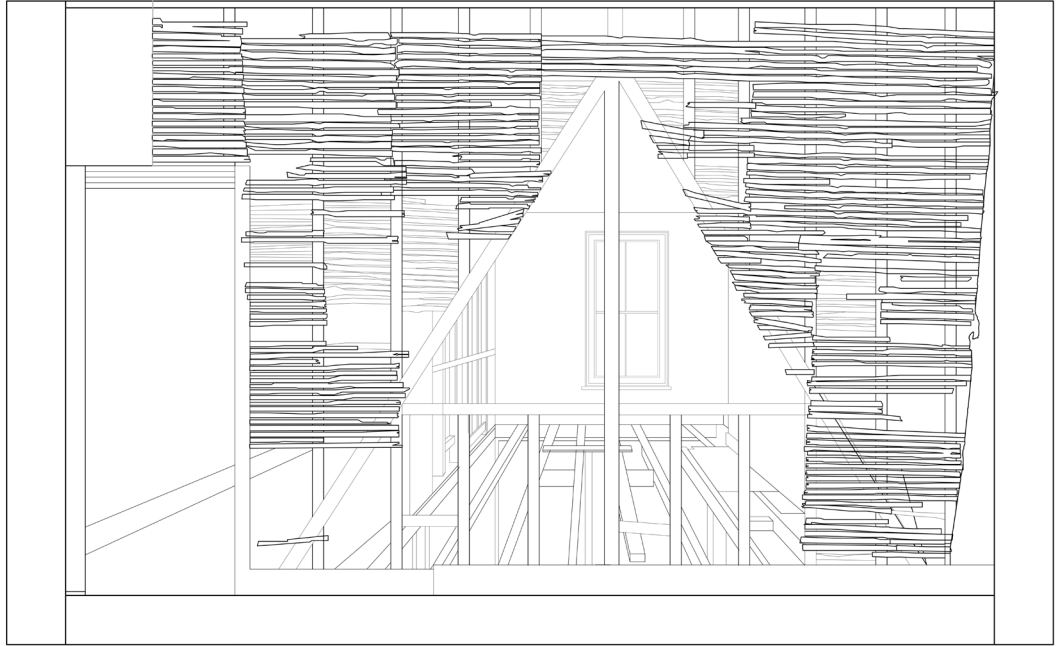
Mrs Browne on moving from London to Harlow New town  
< -----



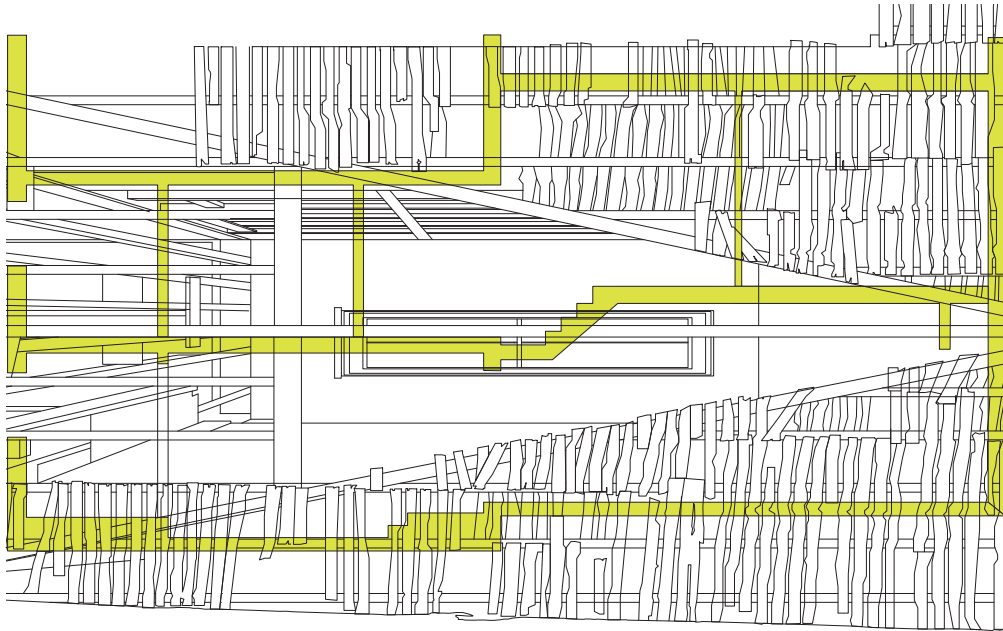
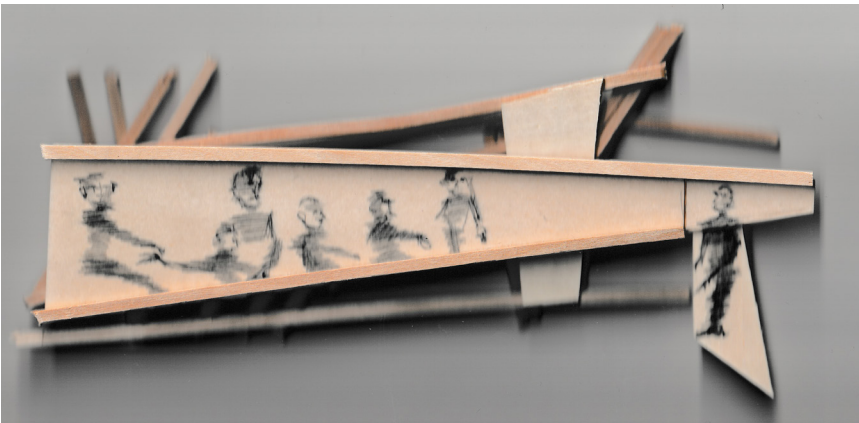
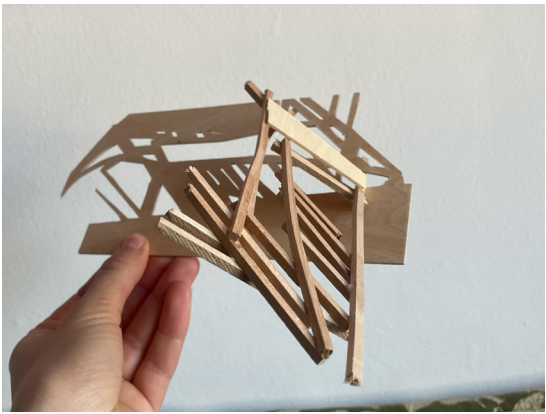
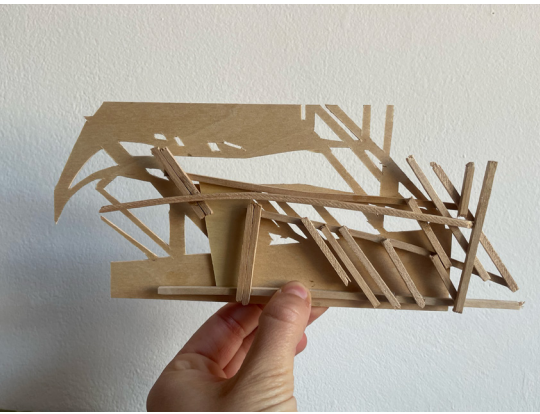
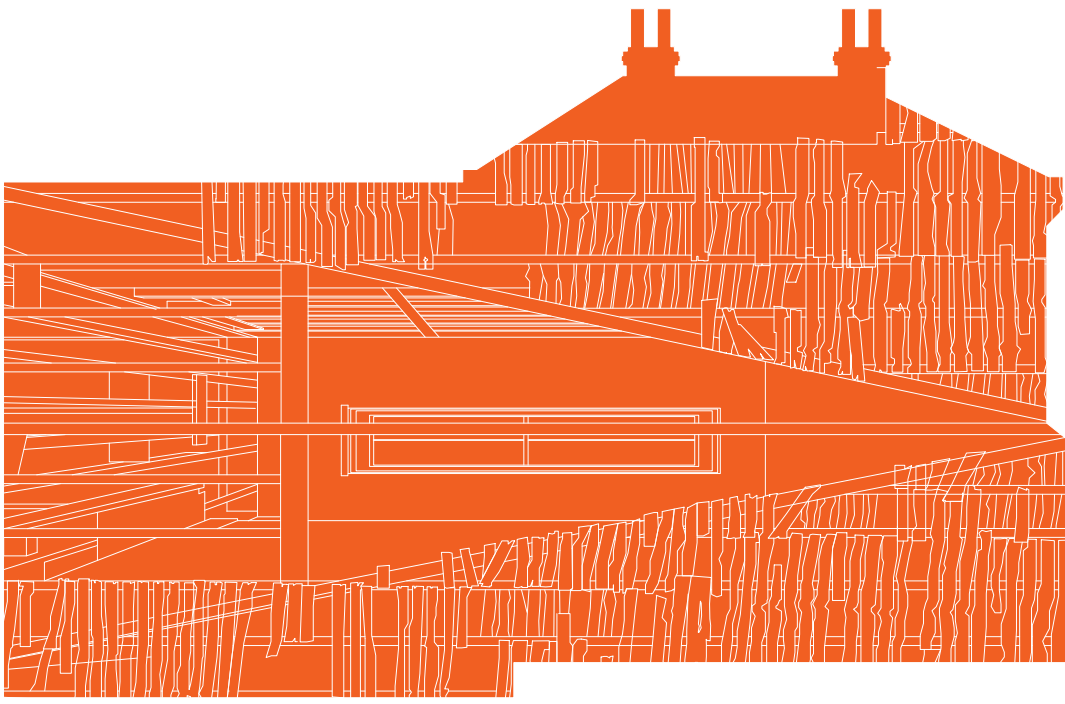
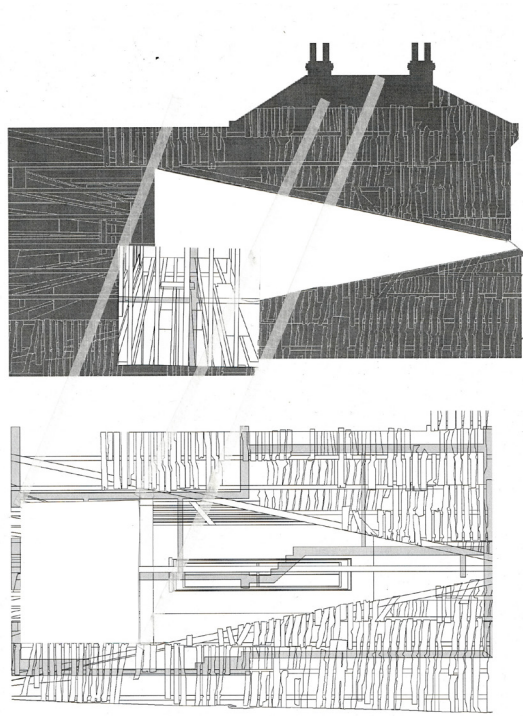
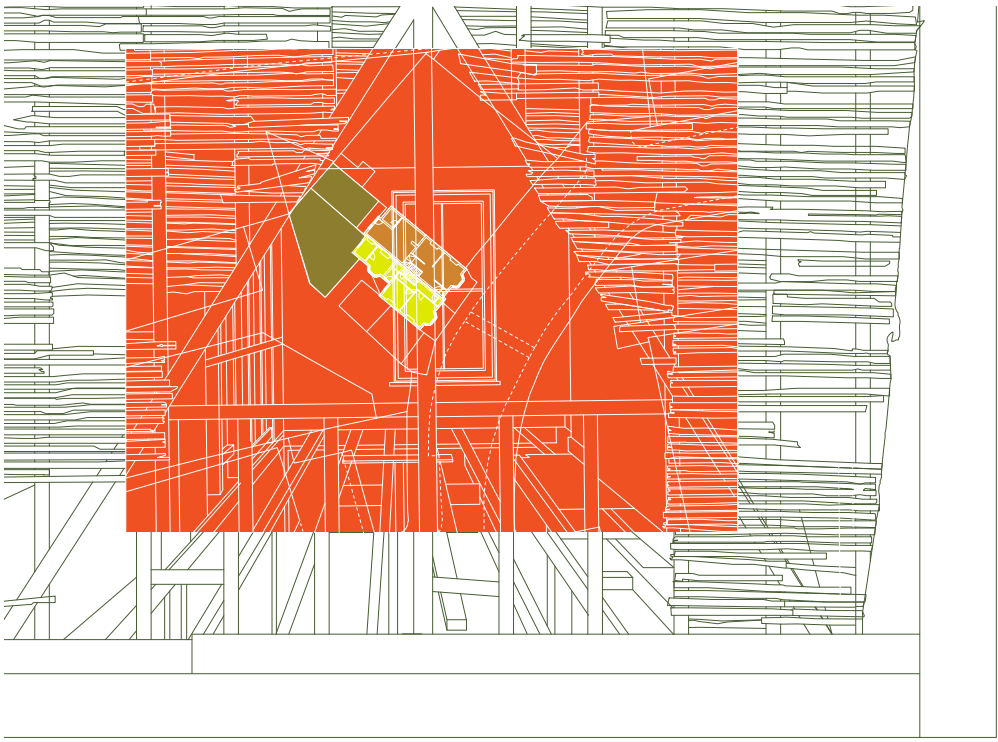
Interviewee about the 'New towns' ----->



DEVELOPING DESIGN AND CONCEPT

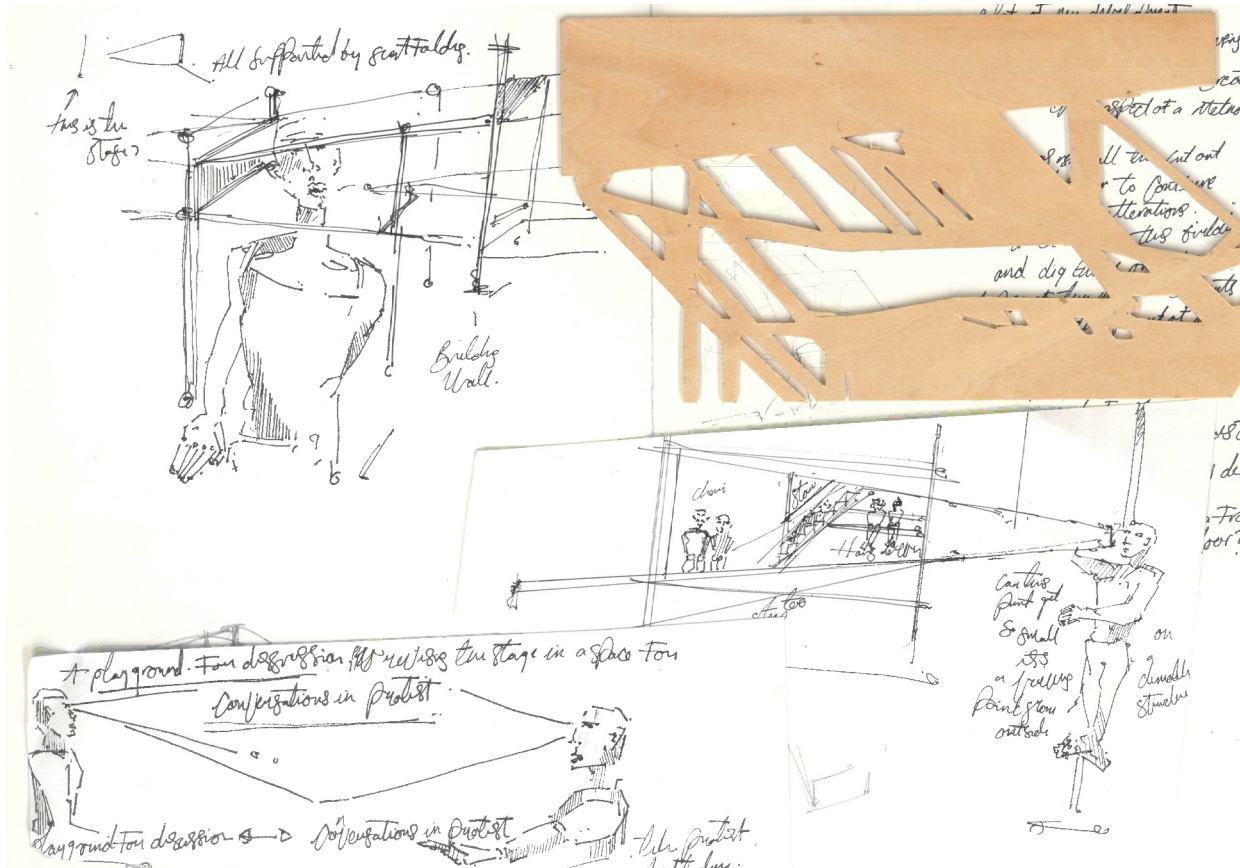
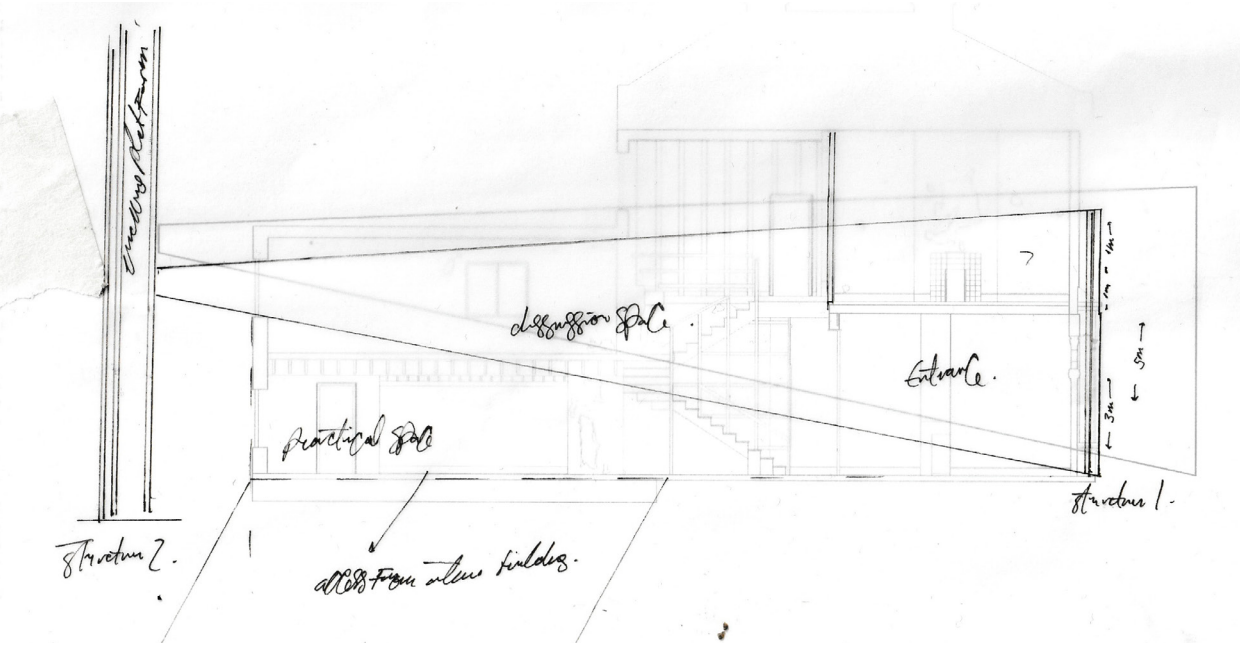


Cladding, in the safe house. Inspired me to look into scaffolding and exterior cladding on buildings. Anti modernist and Anti Fascist.

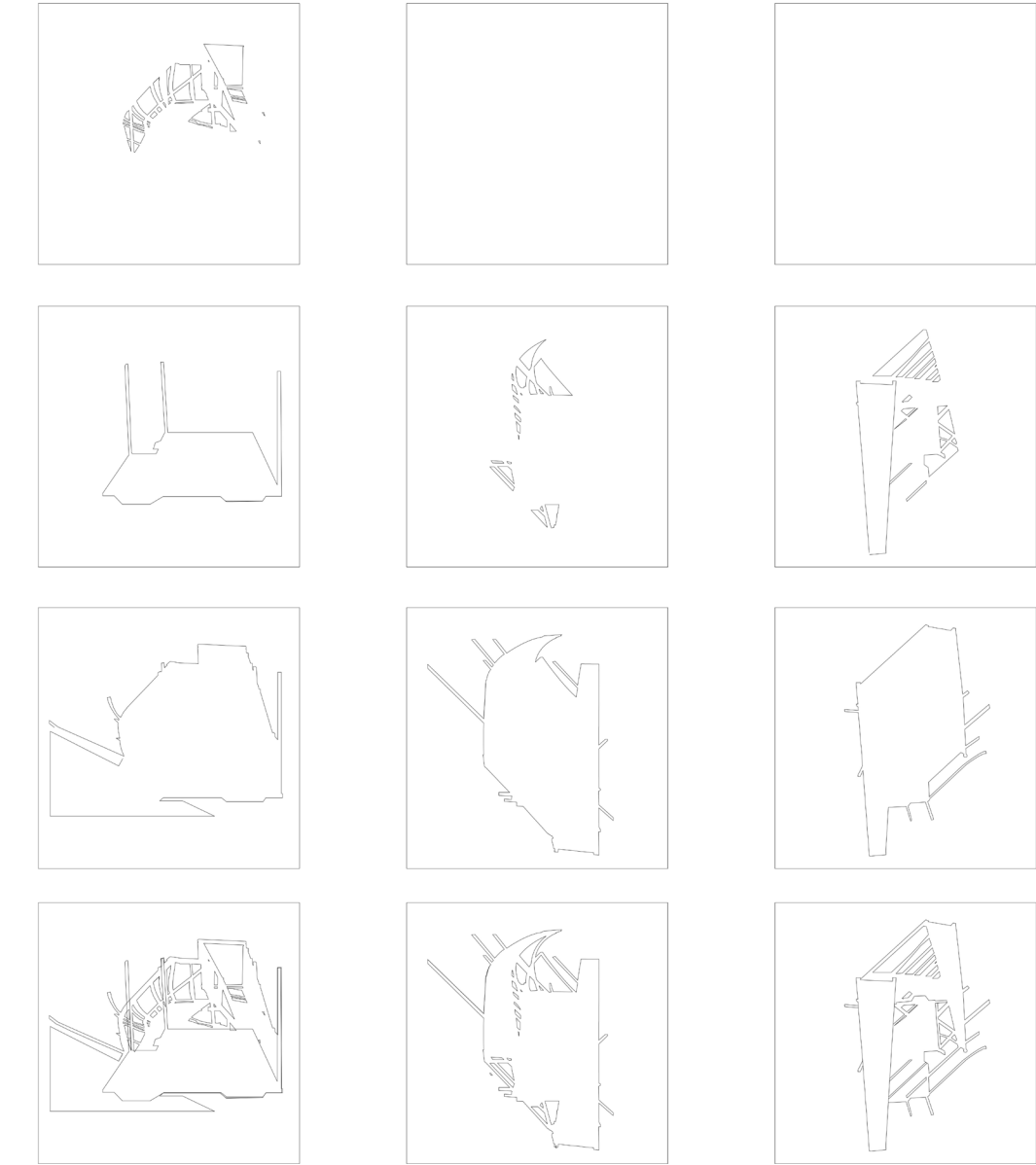


Modeling with cladding and wood to imagine structure. Thinking about scaffolding as a working class inclusive material easily adapted and constructed.

INITIAL SKETCH OF DESIGN PROPOSAL



Reoccurring triangle in my design, using a triangle of conversation to subvert hierarchal ideas of the stage The sloped design means that each place has a different perspective. Many different places to speak from



Deconstructing shaddows from models. Extracting shapes to use as cladding on design.

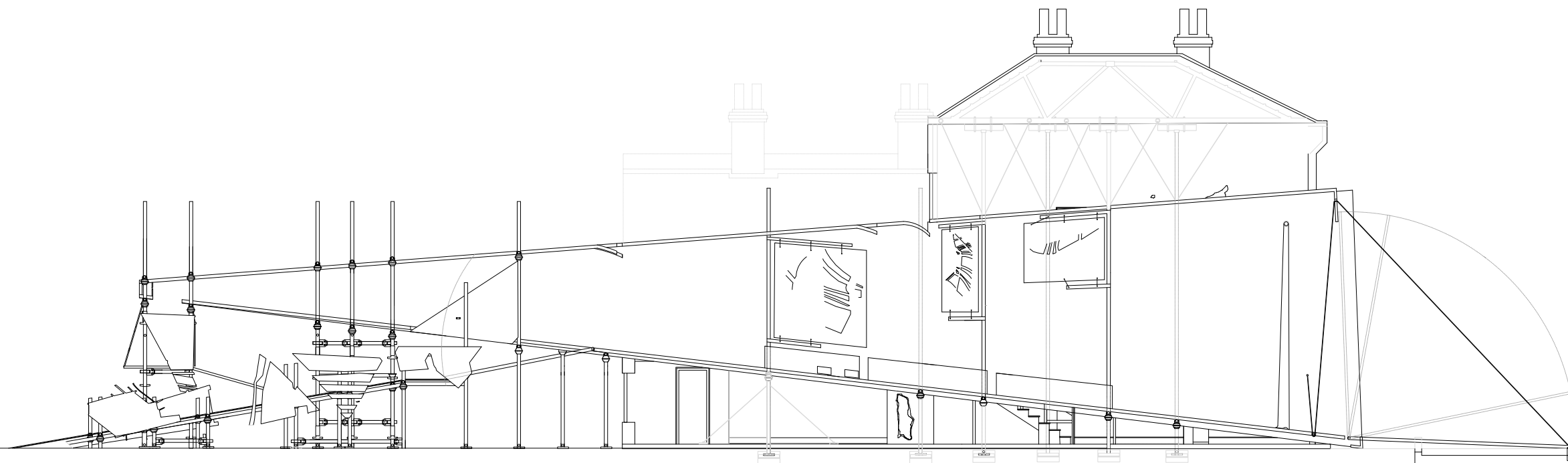
SCAFFOLDING AND PROTEST

Through research on Antifascist scaffolding structures i discovered Claremont road. A road which in the late 90s became victim to a new M11 connecting road. A protest to save the area escalated into both a political and architectural phenomenon with in London.

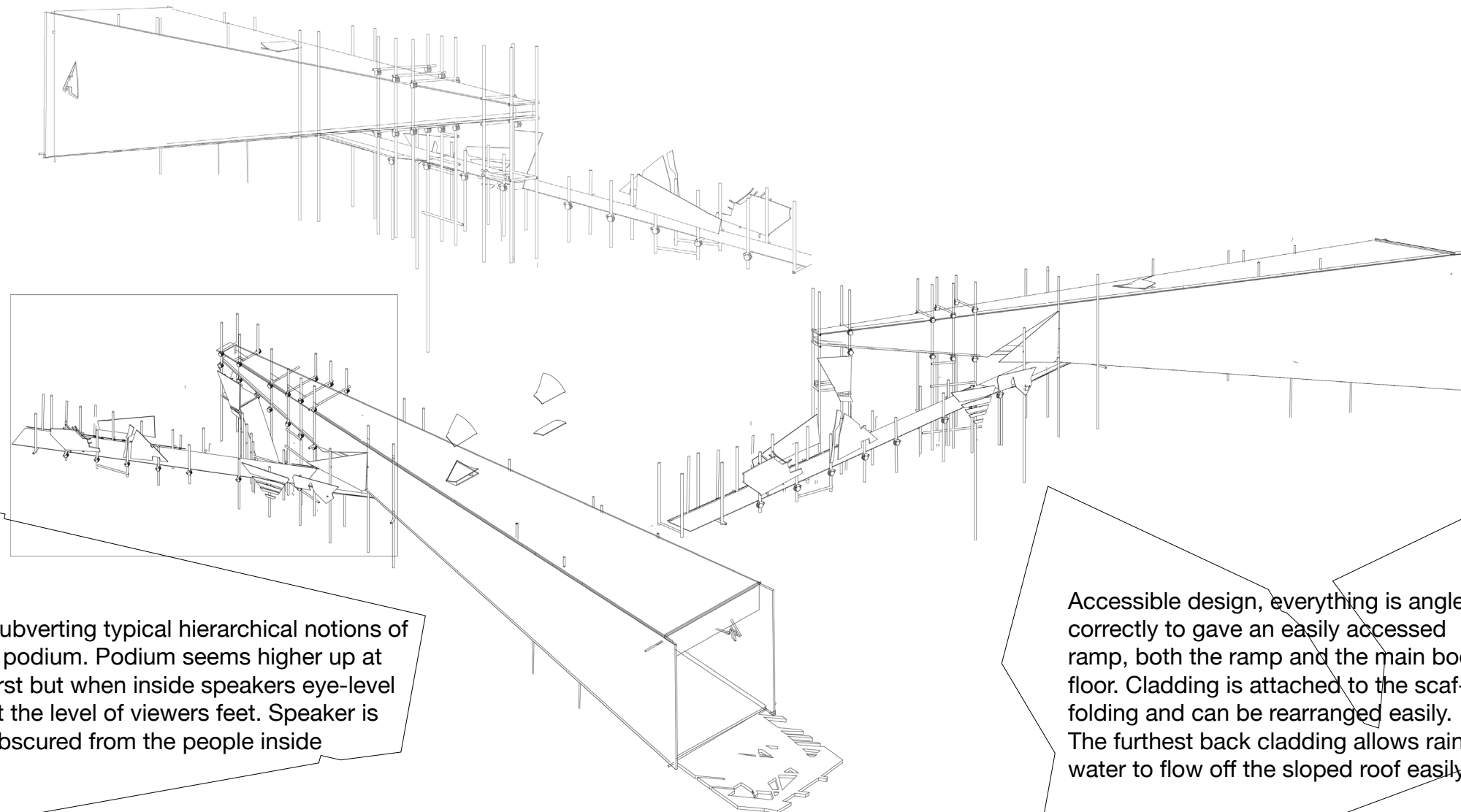
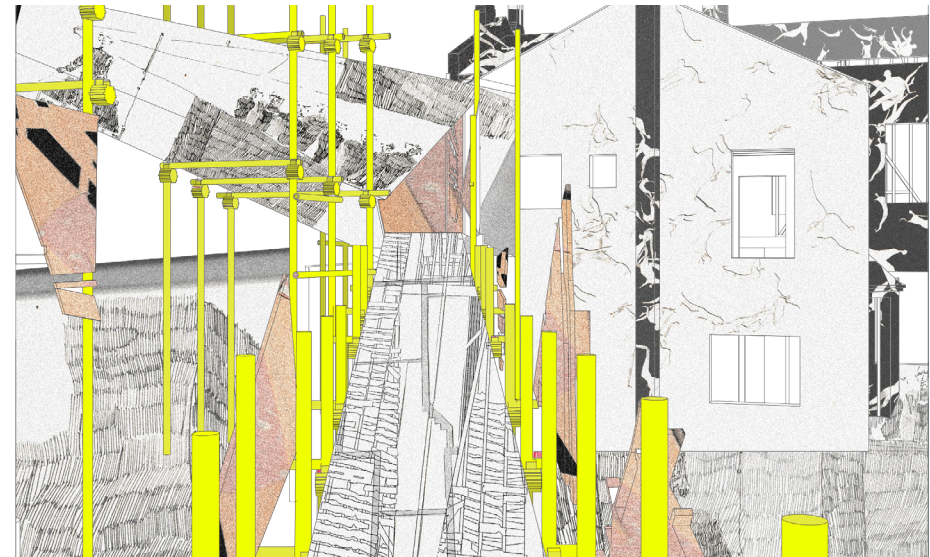
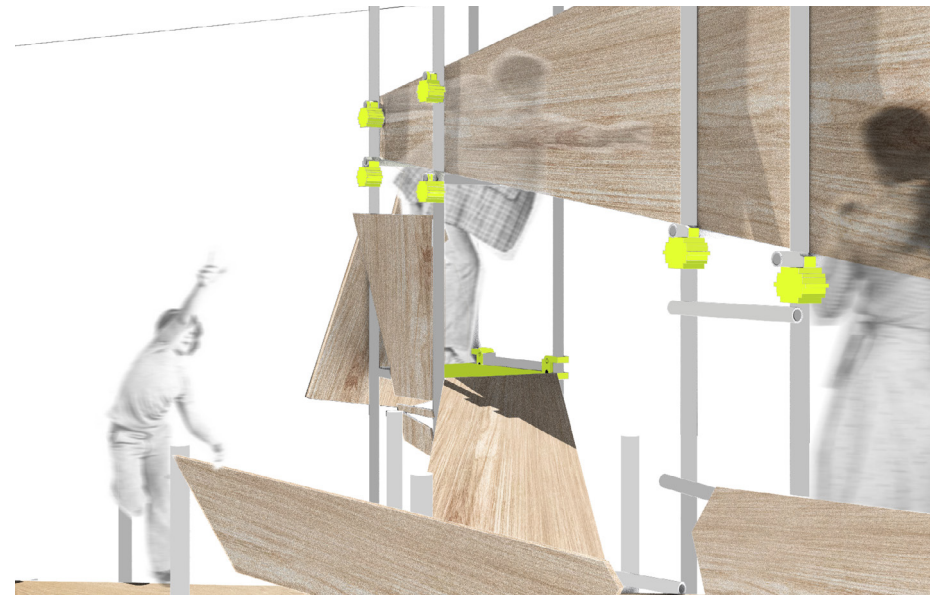
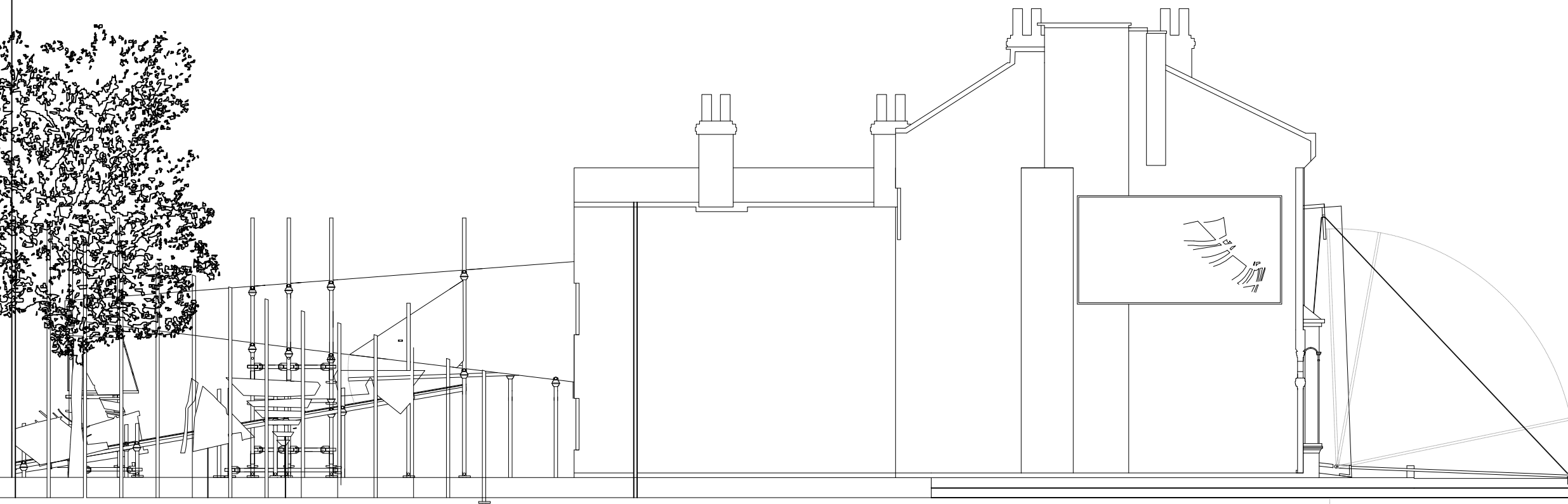
Protest architecure and the process of everyday building and maintaintaining reflect eachother visually. Almost like we revolt in a language of care, repair and construction







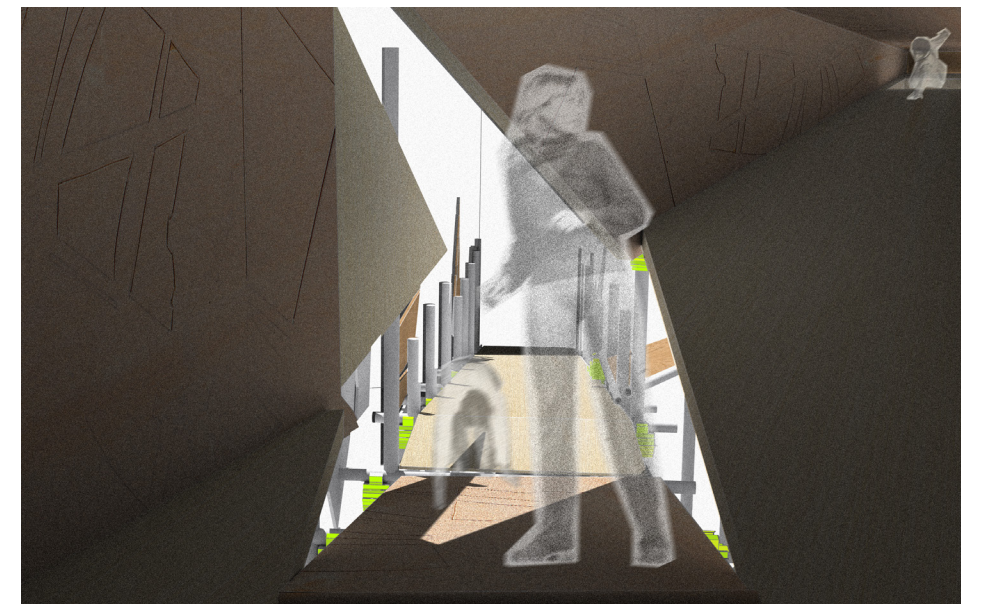
ACOUSTAMISTIC PODIUM



Subverting typical hierarchical notions of a podium. Podium seems higher up at first but when inside speakers eye-level at the level of viewers feet. Speaker is obscured from the people inside

Accessible design, everything is angled correctly to gave an easily accessed ramp, both the ramp and the main body floor. Cladding is attached to the scaffolding and can be rearranged easily. The furthest back cladding allows rain water to flow off the sloped roof easily.

ENTRANCE

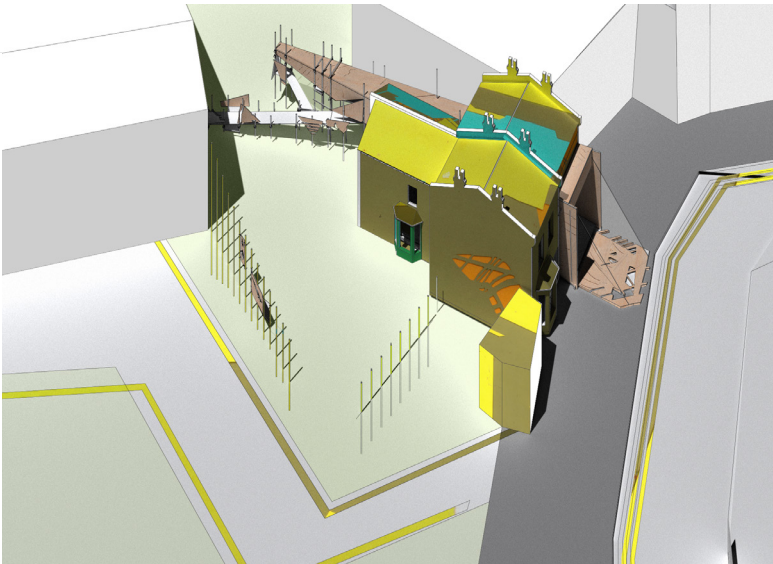
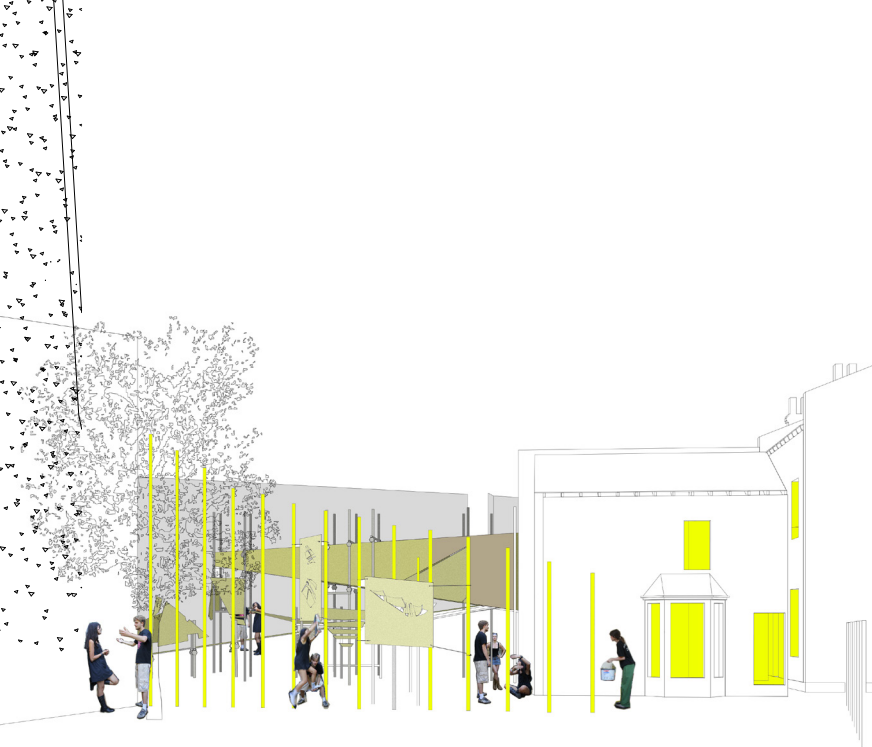
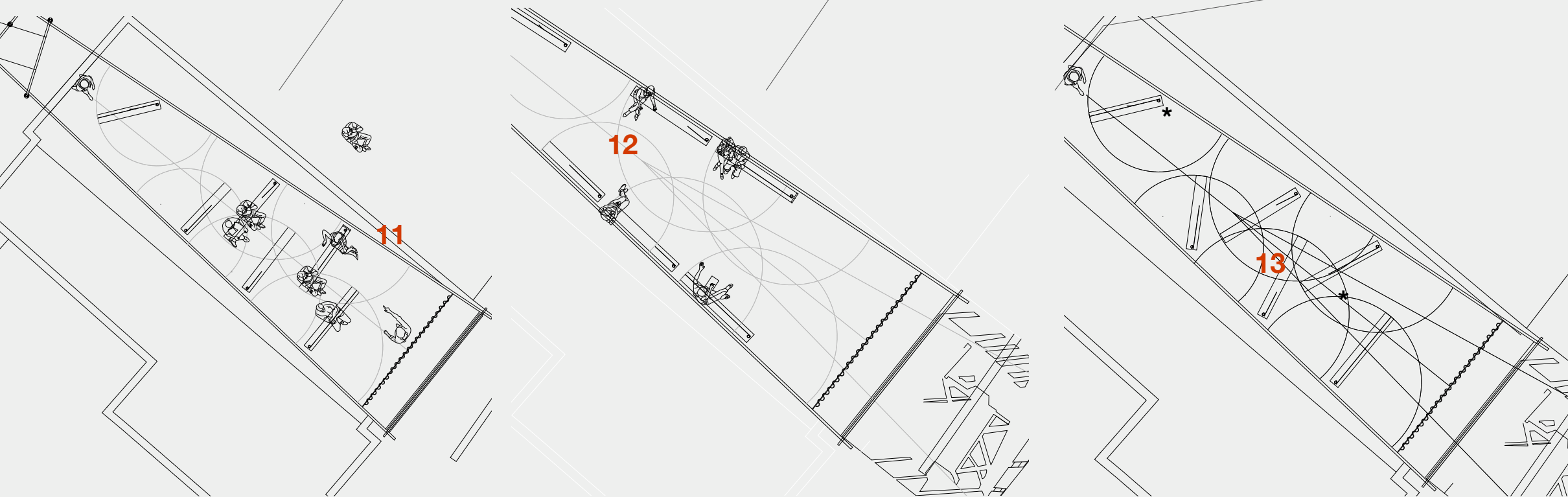




- 1 Main entrance ramp (accessible)
- 2 Integrated door and ramp which swing open for access
- 3 Acoustamatic podium
- 4 Main discussion space
- 5 Benches and acoustic pannels which pivot on around the supporting structure
- 6 Large curtain

- 7 Front ramp
- 8 Second space for after and before events, extra movable benches and seat storage which can be moved into the street when needed
- 9 Outside scaffolding wall
- 10 Storage and Repair workshop, access to structure of intervention through second building. Sustainable materials and repairs.

MODULAR BENCHES AND ACOUSITIC PANNLES



Similar to the benches being able to adjust for the type of conversation, the pannels will adjust the acousitcs.

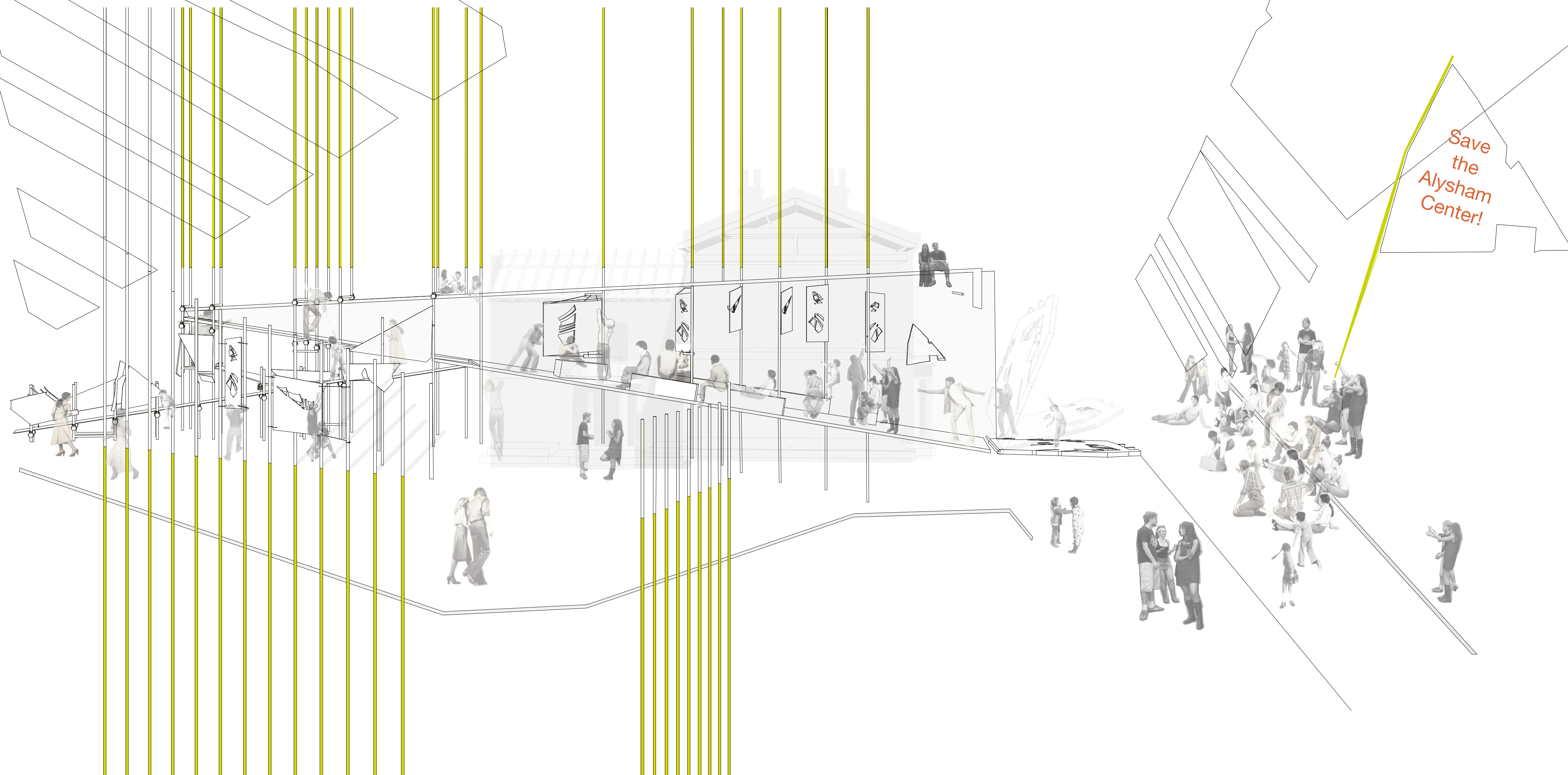
11 Benches and pannels are in rows, the benches order people to view one speaker whilst the pannels are arranged to block echoes and murmuring in thr crowd for clear vocals of the person speaking

12 Benches and pannels are pushed against the wall and the front ramp is down. A big open space is created, the person on the loudspeaker end, talking into the room is projected across the whole room and onto the street. The pannels are angled parallel to the direction of the sound vibrations and so will gently vibrate the pannls creating a musical tone, which echoes out into the street.

13 The pannels also physically divide the room, as the body is a big open space, the pannels when angles correctly will create barriers.

\* the two end pannels will be larger than the rest and reach to the floor to give the effect of a movable wall. Creating more of an entrance way to the space when desired.





1:1 Model of acoustic panel.  
Using ply wood and metal pole. Panels created by bending wood to create a giant reed like object

1:50 Model of body and of structure. Made from wood and metal

