

From Factory to Factory

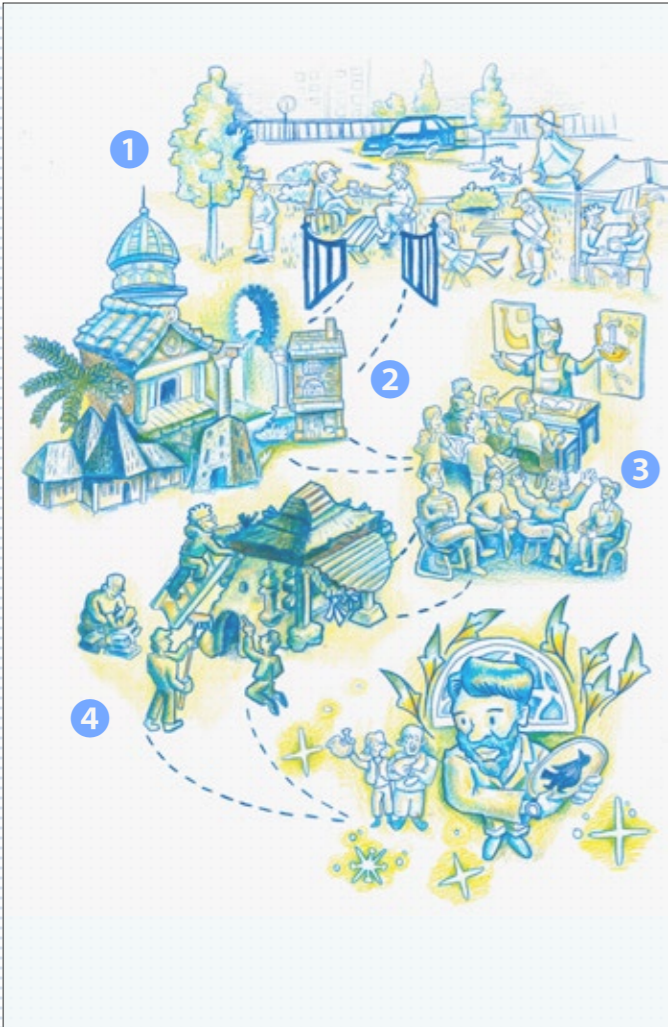
Crafting Cultural Identity: Vernacular Crafts Workshop

Immigrants in the UK often face identity conflicts between their own culture and British culture. In 2020, about 14% of the UK population was foreign-born. Promoting cultural awareness and inclusivity can help address this issue. Encouraging the celebration of both cultures and

fostering an environment of diversity helps immigrants embrace their multifaceted identities. Educational programs and events that promote understanding and respect for cultural differences can positively impact society, fostering a community based on dialogue and mutual respect.

Programme Drawing

- 1 Provide relaxation spaces for residents of diverse ethnic communities.
- 2 Global Vernacular Architecture Exhibition
- 3 Architecture Craftmanship Workshop & Cultural Dialogue and Sharing Workshop
- 4 Pavilion Space Co-created Using Skills Learned in the Workshop

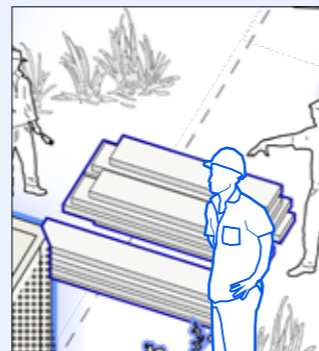
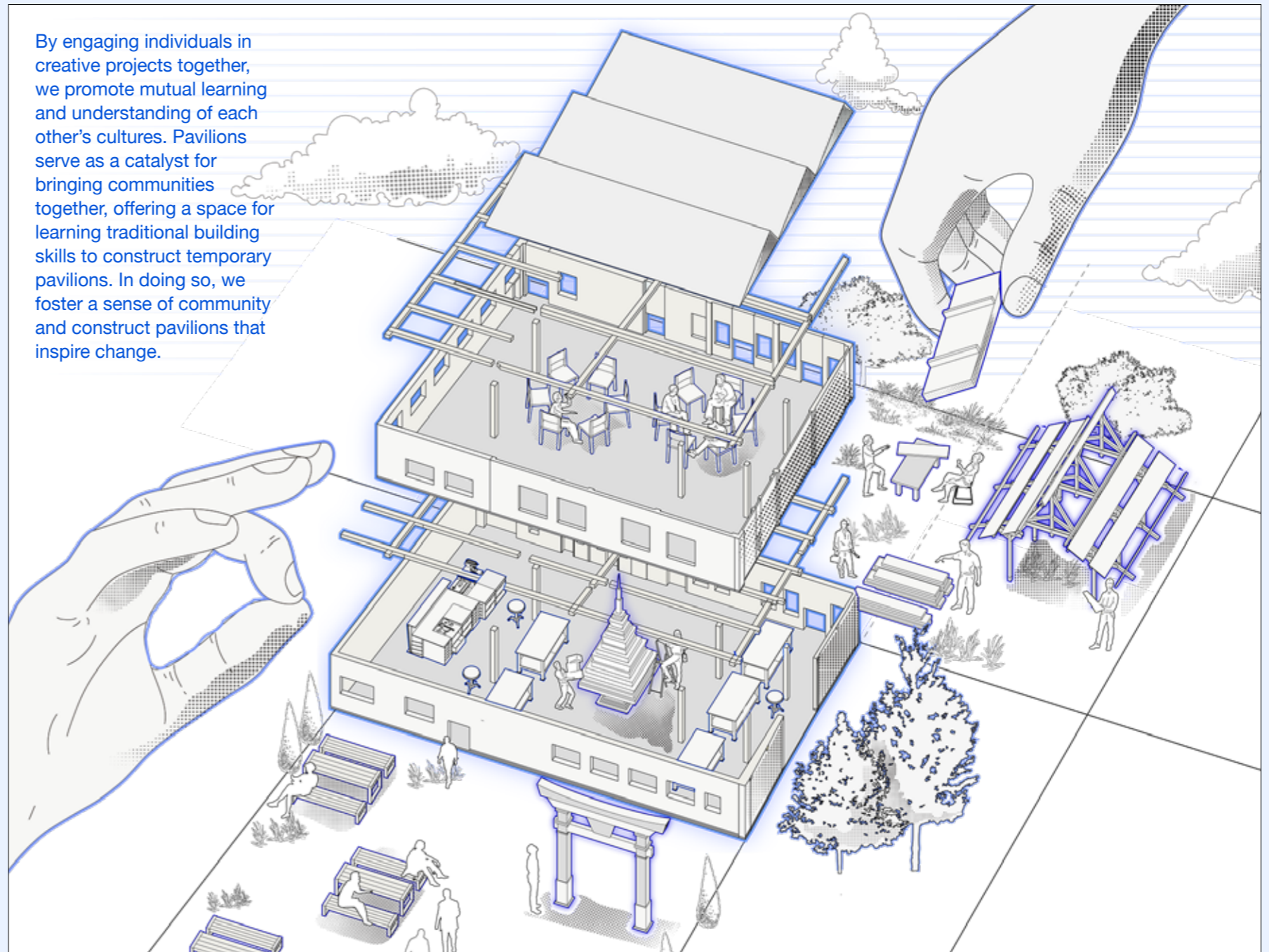


Site Identity

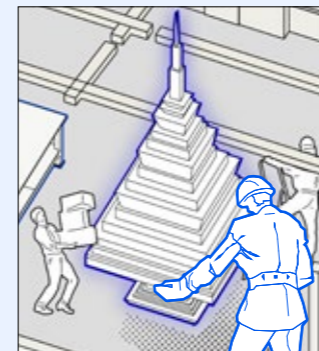
Peckham is one of the most diverse areas in London, with a significant representation of Black or Black British residents.



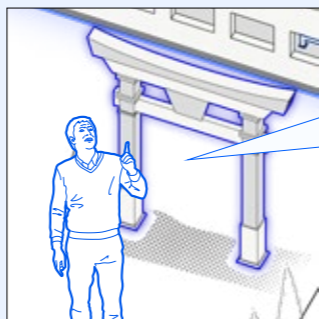
By engaging individuals in creative projects together, we promote mutual learning and understanding of each other's cultures. Pavilions serve as a catalyst for bringing communities together, offering a space for learning traditional building skills to construct temporary pavilions. In doing so, we foster a sense of community and construct pavilions that inspire change.



We learn together!



We make together!

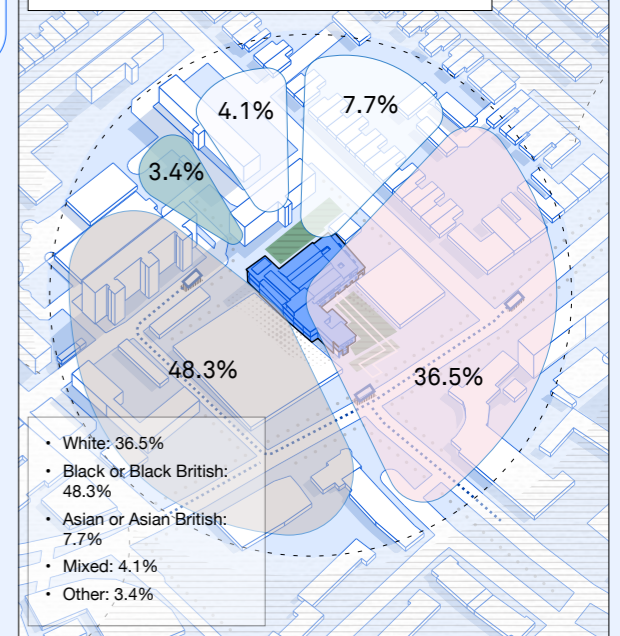


We exhibit together!

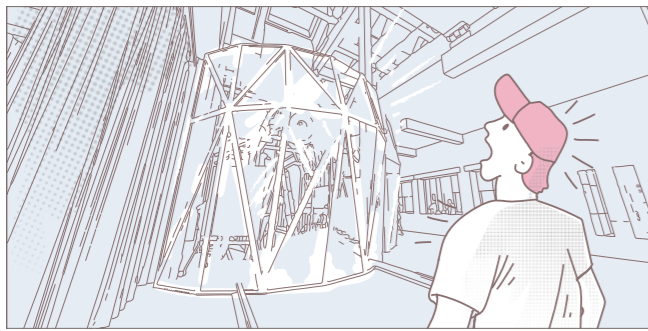
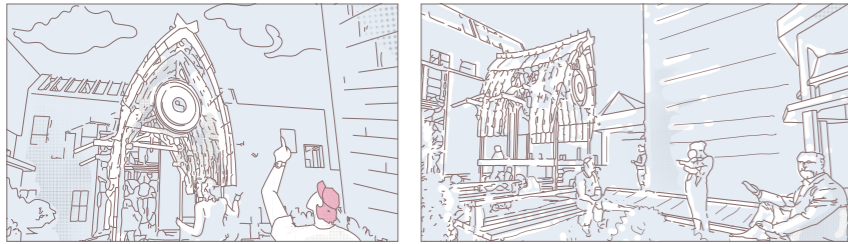
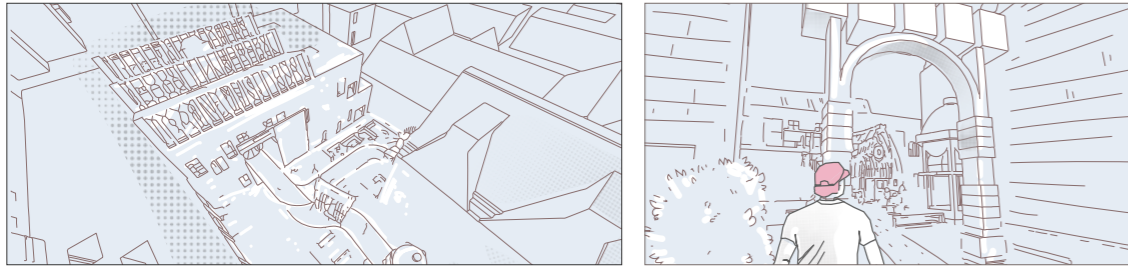


We share experience about culture!

Ethnic Diversity in Peckham, London

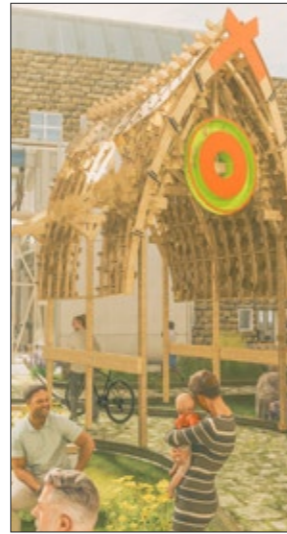
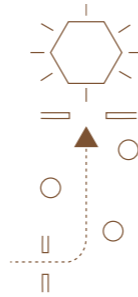


1. Entering the Space

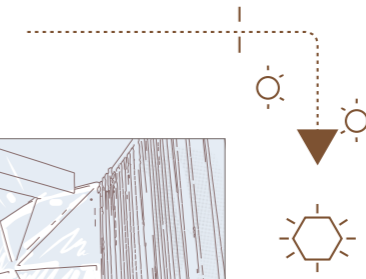
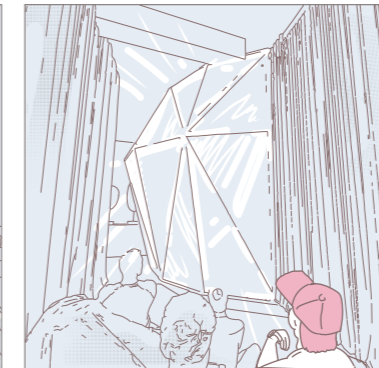
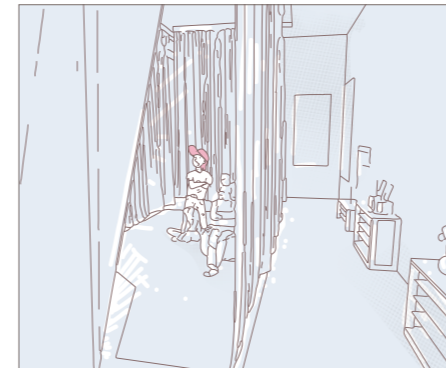
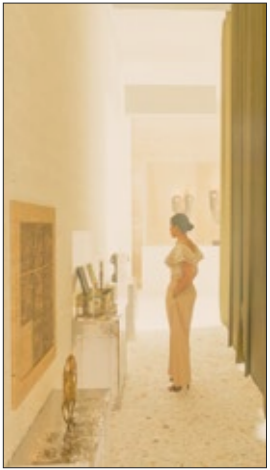
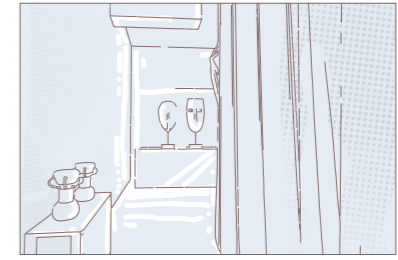
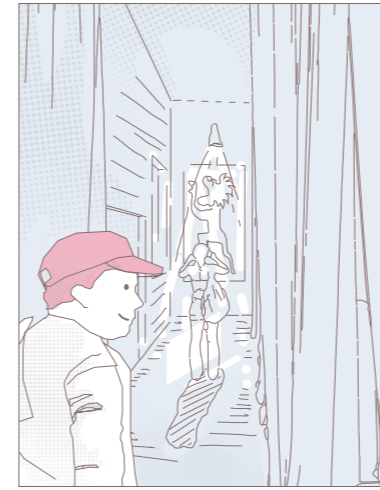


Display Space

The pavilions displayed in the garden captivate people's interest, leading them into the factory. And within, the diamond-shaped making spaces leave visitors with a remarkable impression.



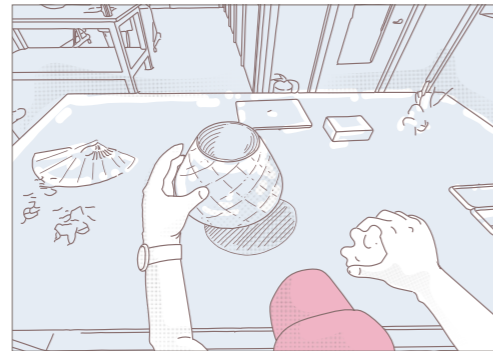
2. Learning about the vernacular craftsmanship of various cultures



Exhibition Space

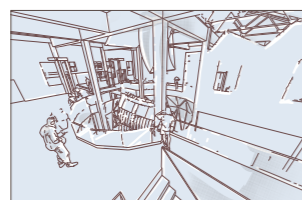
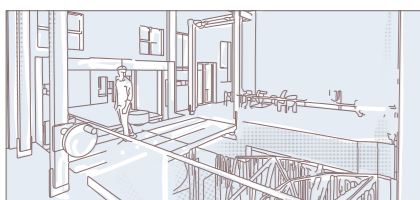
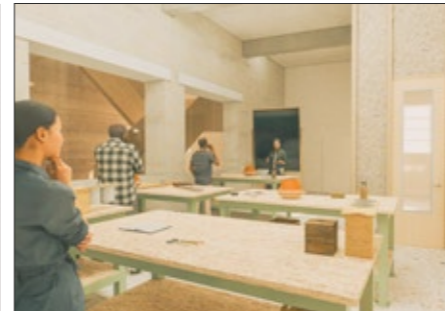
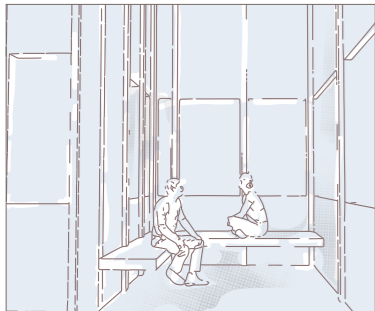
As visitors draw back the curtains and enter, they learn about ethnic craftsmanship in the exhibition space, with a seating area at the exit to admire the diamond-making space.

3. Learning craftsmanship by making it

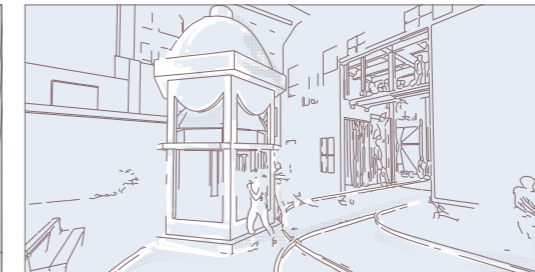
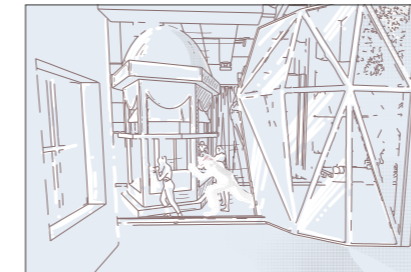


Workshop Space

Here, visitors can refine their craft skills firsthand by creating crafts themselves. These spaces also encourage mutual engagement, allowing visitors to observe workshops from adjacent rooms.

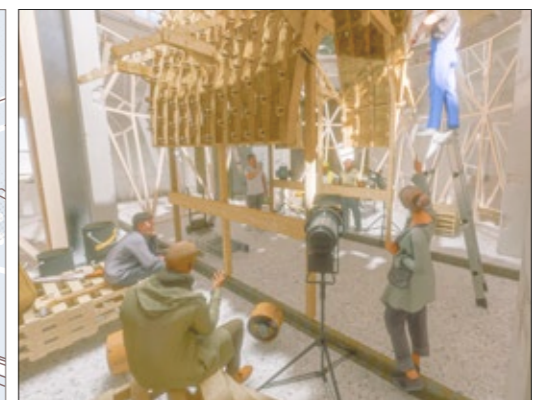
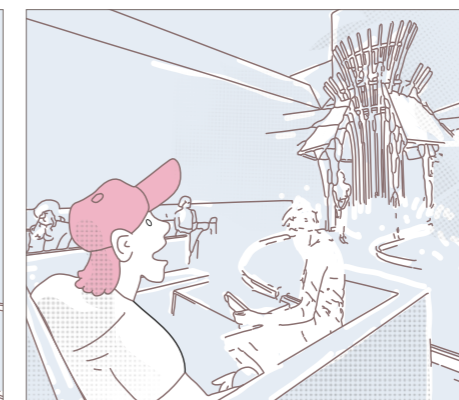


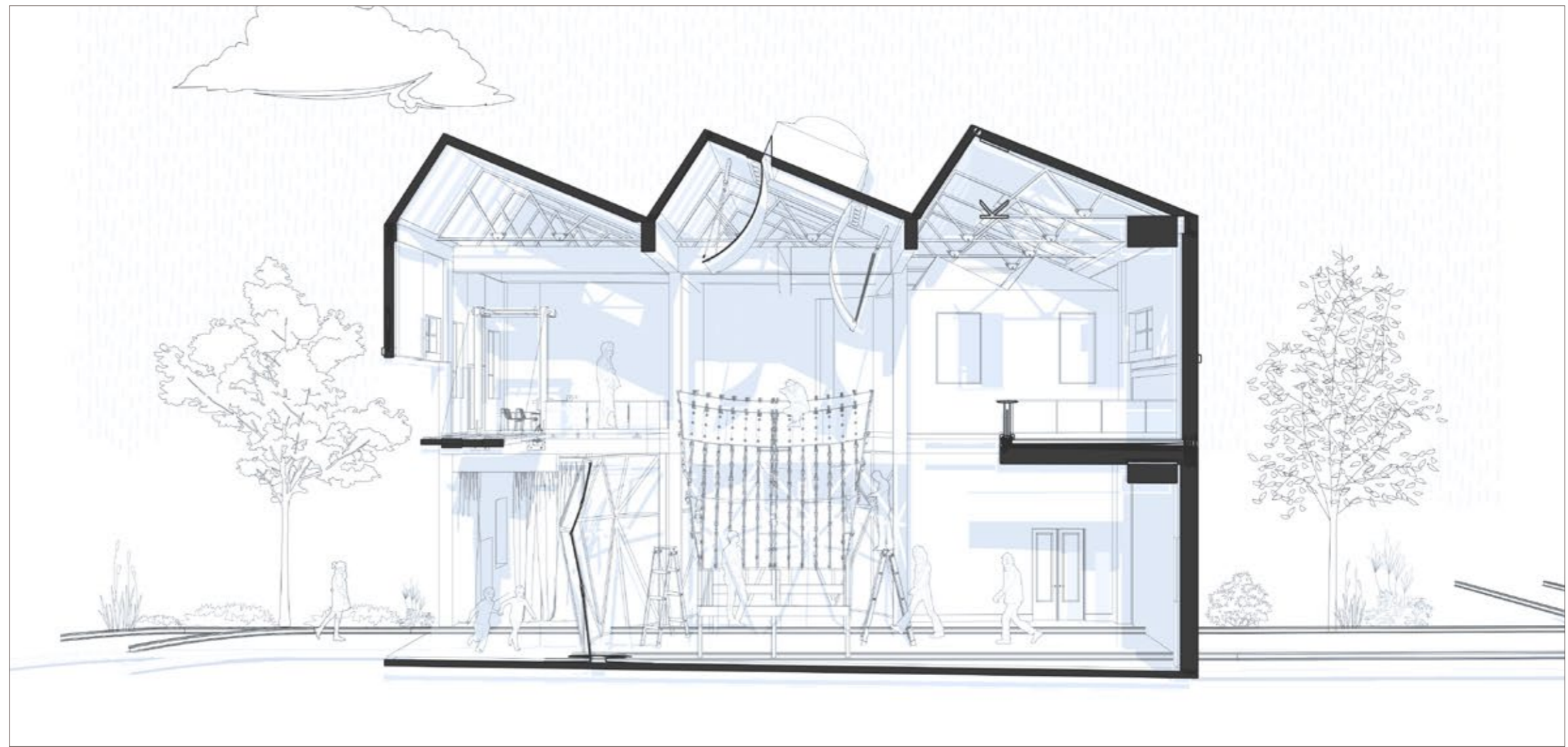
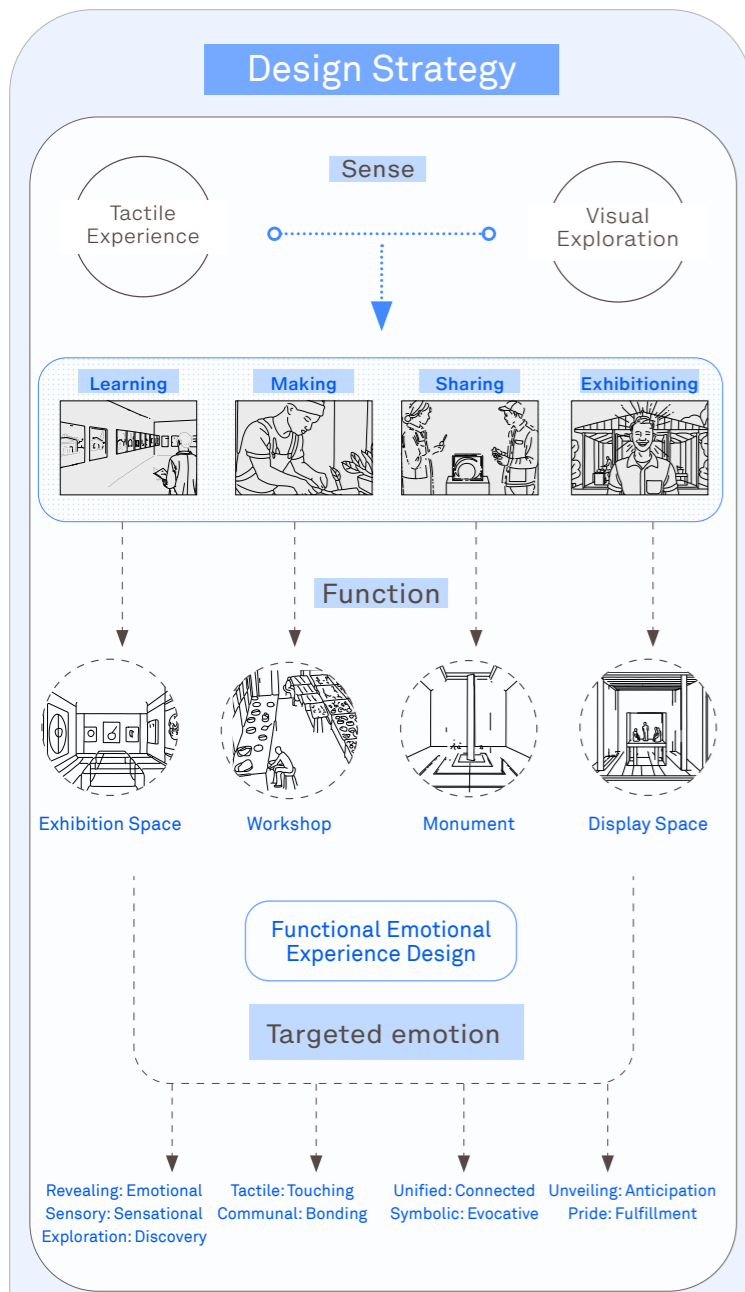
4. Showcasing Craftsmanship and Cultural Exchange



Display Space

Participants utilise workshop skills to craft pavilions representing specific cultural vernaculars, displayed in the garden via a rail system for interaction and the exchange of vernacular insights with visitors.



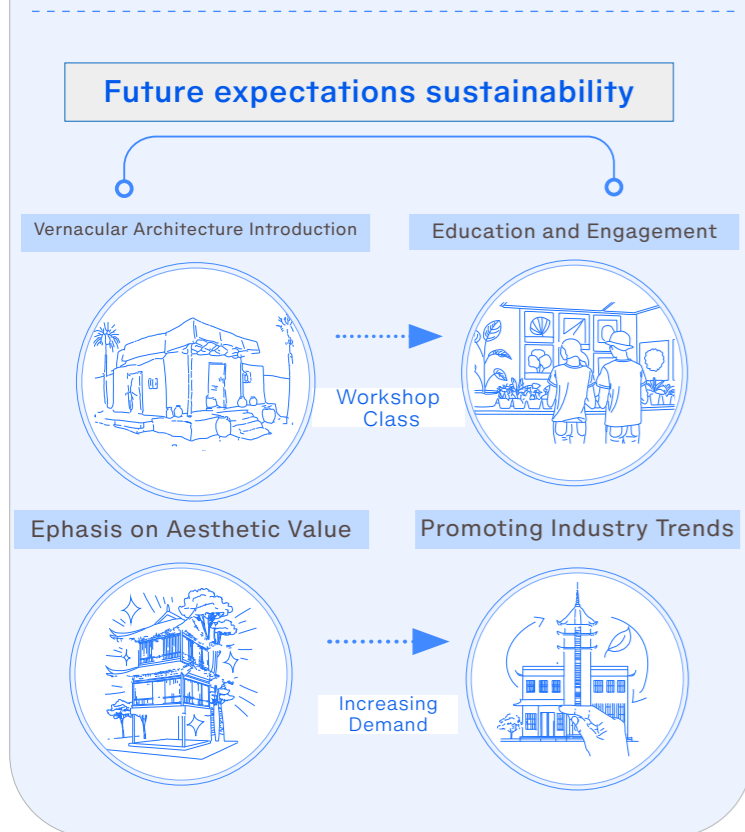
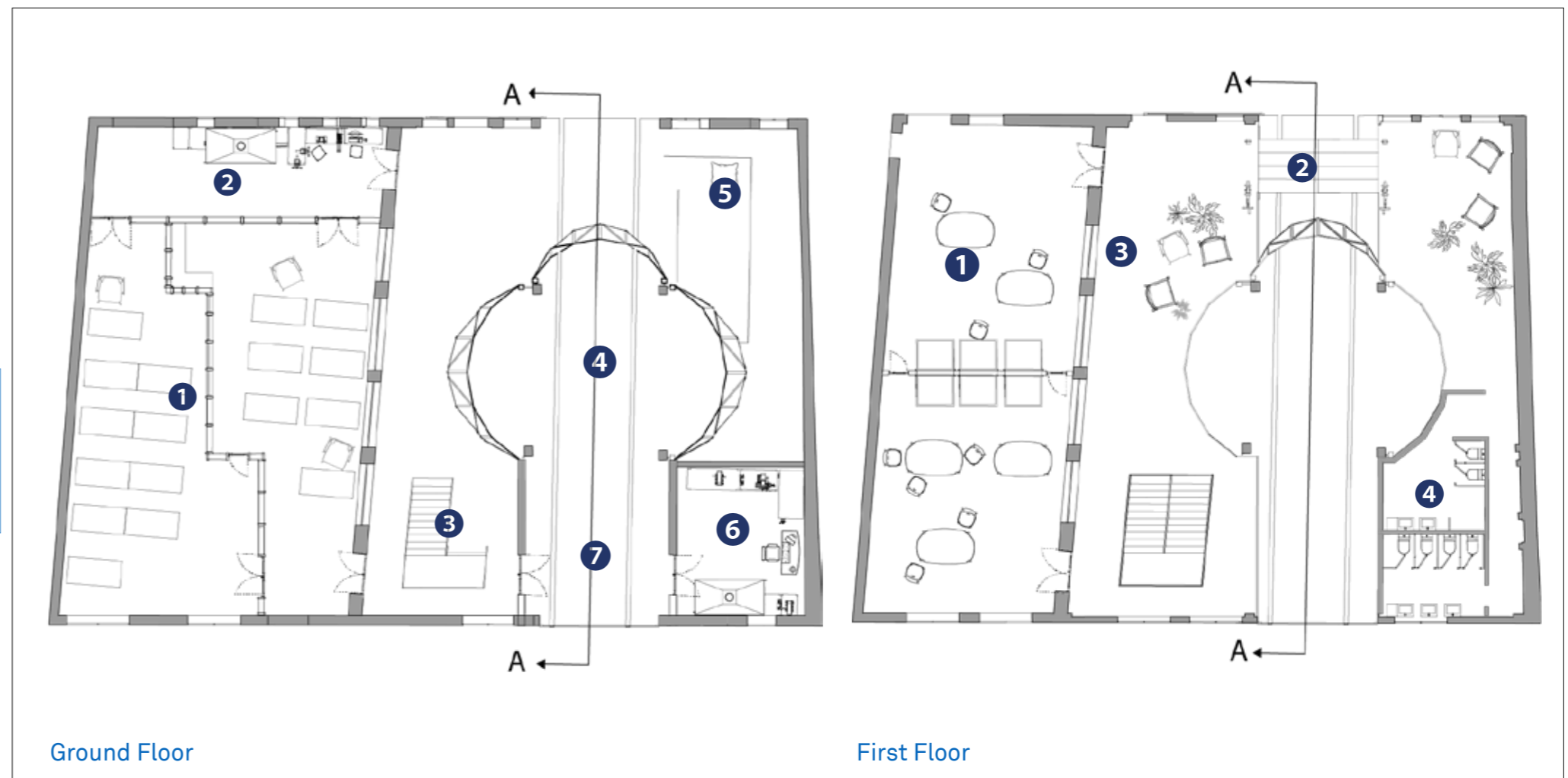


Ground Floor

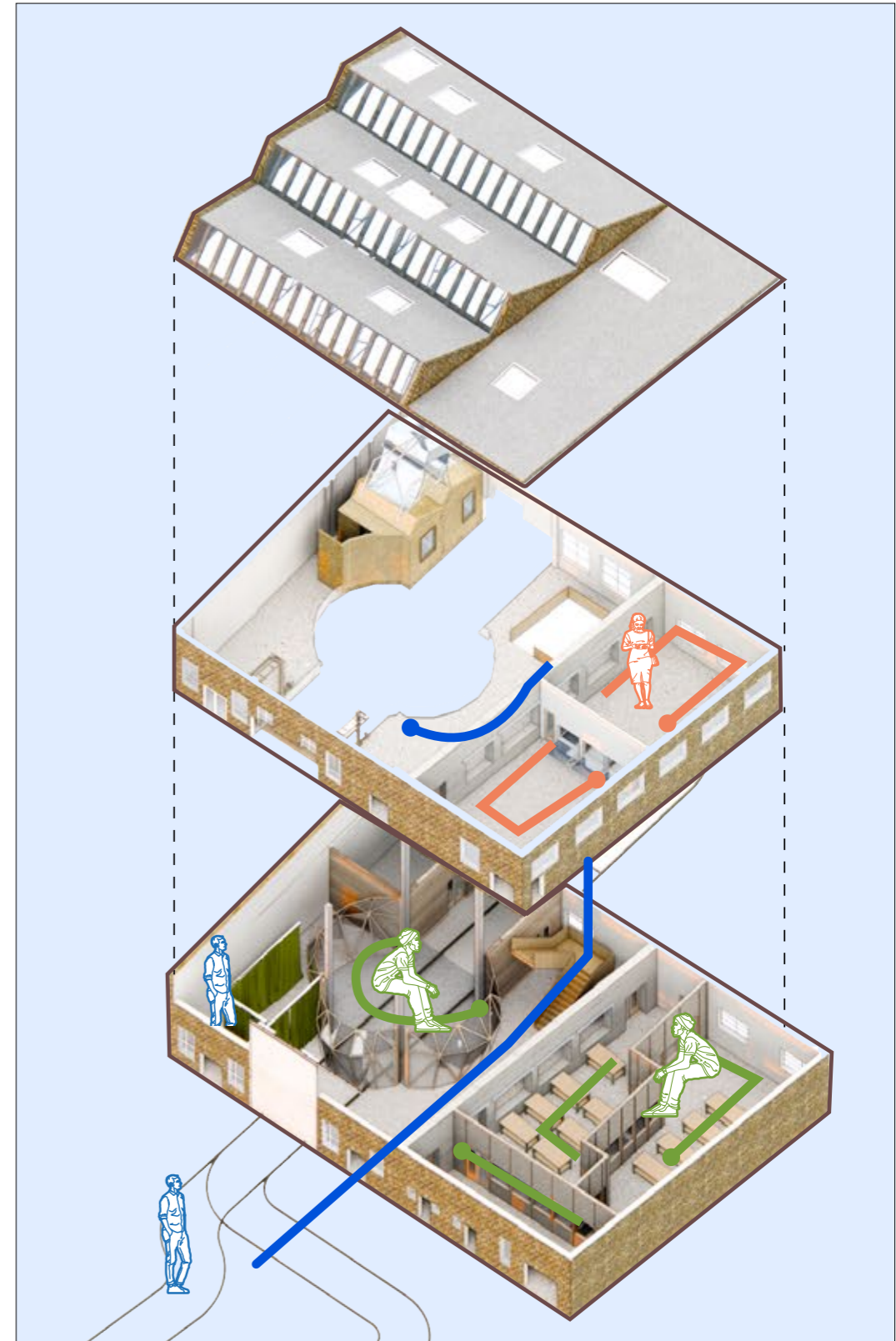
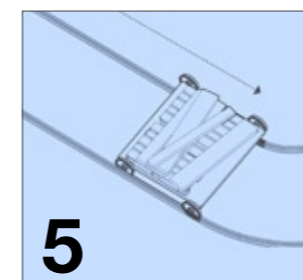
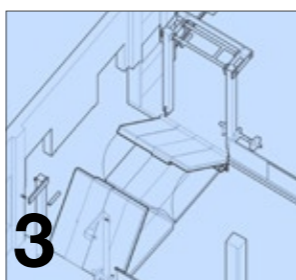
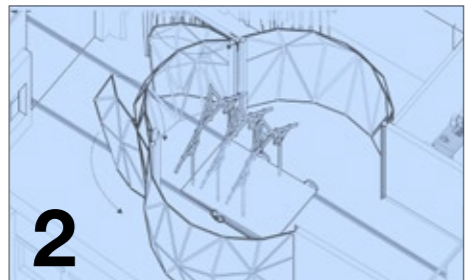
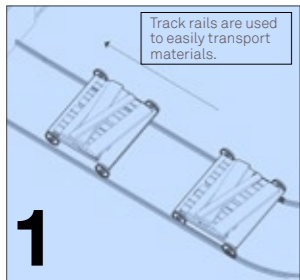
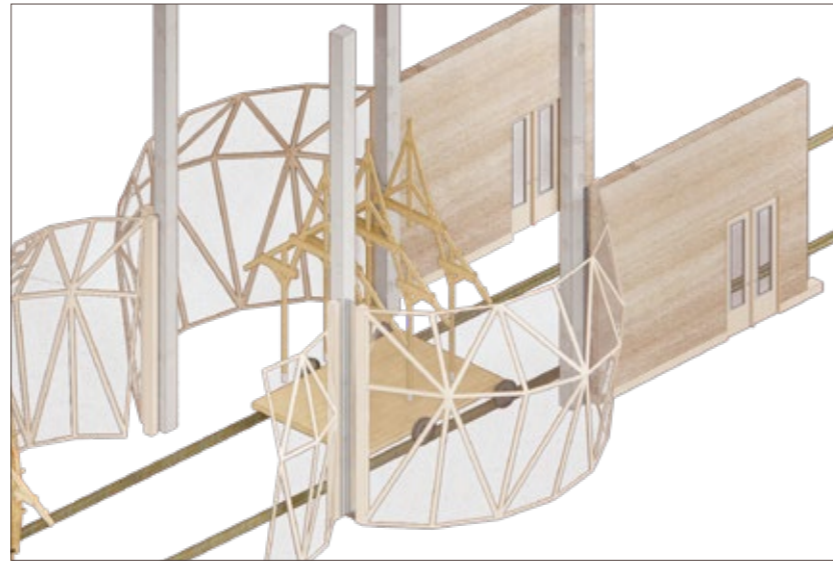
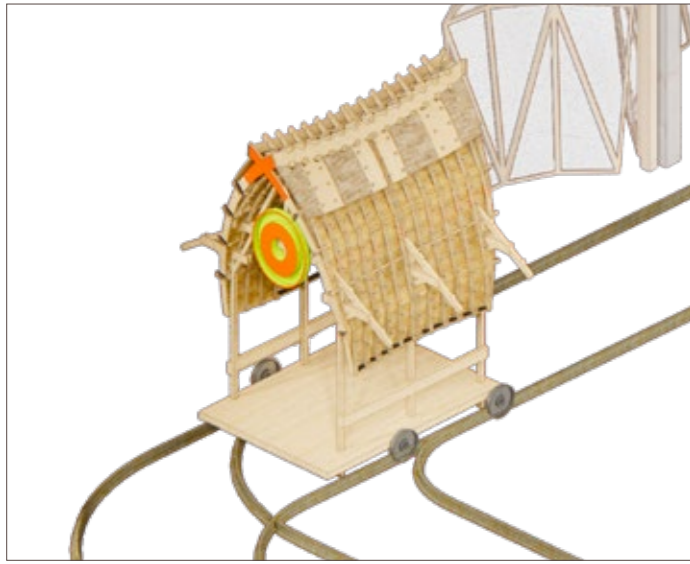
1. Workshop Space
2. Big Equipment Space
3. Stairs
4. Diamond Making Space
5. Exhibition Area
6. In-house Making Space
7. Track Rail

First Floor

1. Student Workshop Space
2. Drawbridge
3. Communal Area
4. Toilet



Diamond Making Space: The Heart of the Space



User Pathways Analysis Diagram

- Regular Users (Workers, Artisan Members)
- Occasional Visitors (Casual Users)
- Educational Program Participants (Student Workshops)

Pavilion Cycle Diagram: Cultural Coexistence in One Space



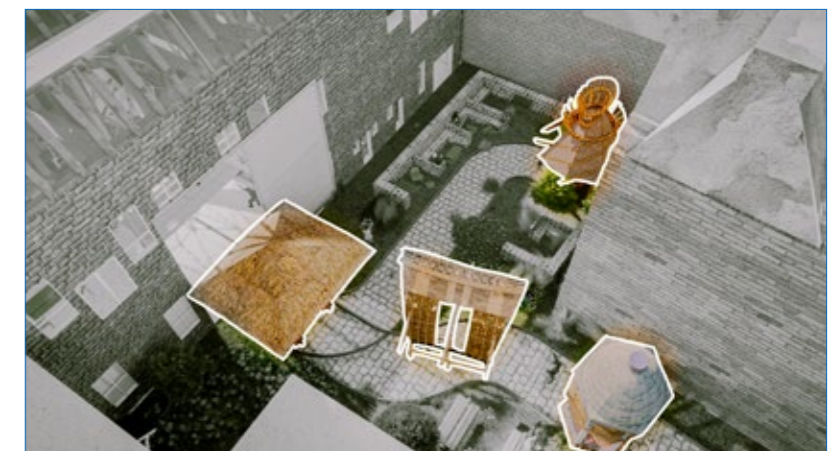
example



1. A pavilion showcasing **Korean** craftsmanship.

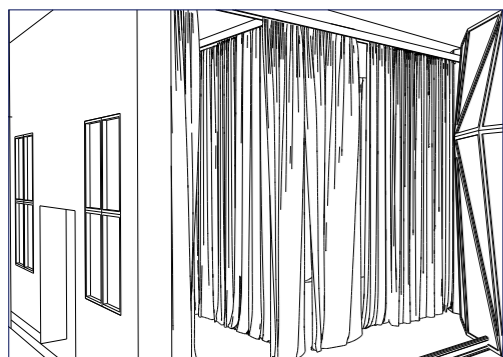


2. A pavilion showcasing **Russian** craftsmanship.



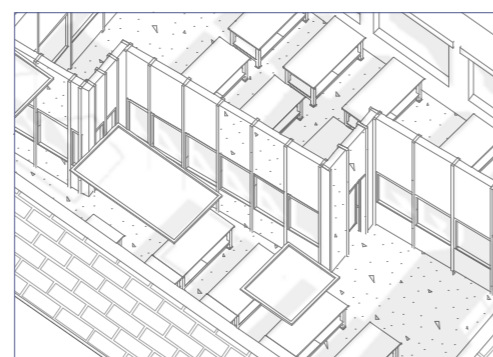
3. Various pavilions showcasing the craftsmanship of the **Philippines** and **Pakistan** will be exhibited together.

First month



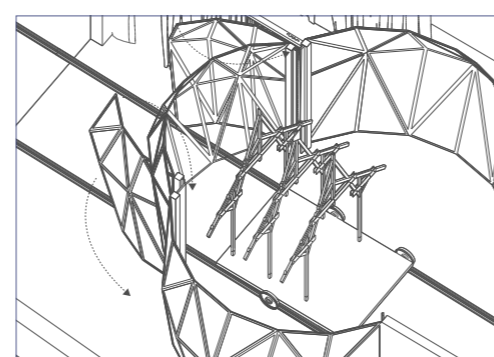
An exhibition of a specific culture is held.

After the first month

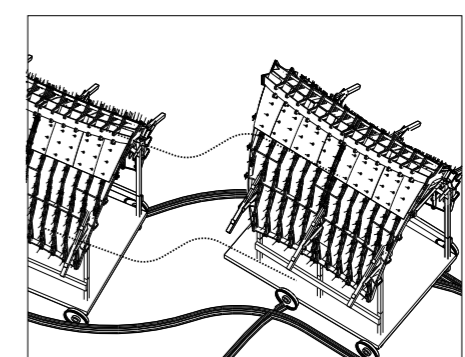


Over one month, workshops teach the vernacular craftsmanship of that culture.

During the first to third months



After a total of four months, the completed pavilion is displayed in the garden.



New pavilions are continuously exhibited along the rail, ensuring a dynamic and ongoing showcase.