

Repair Playground:

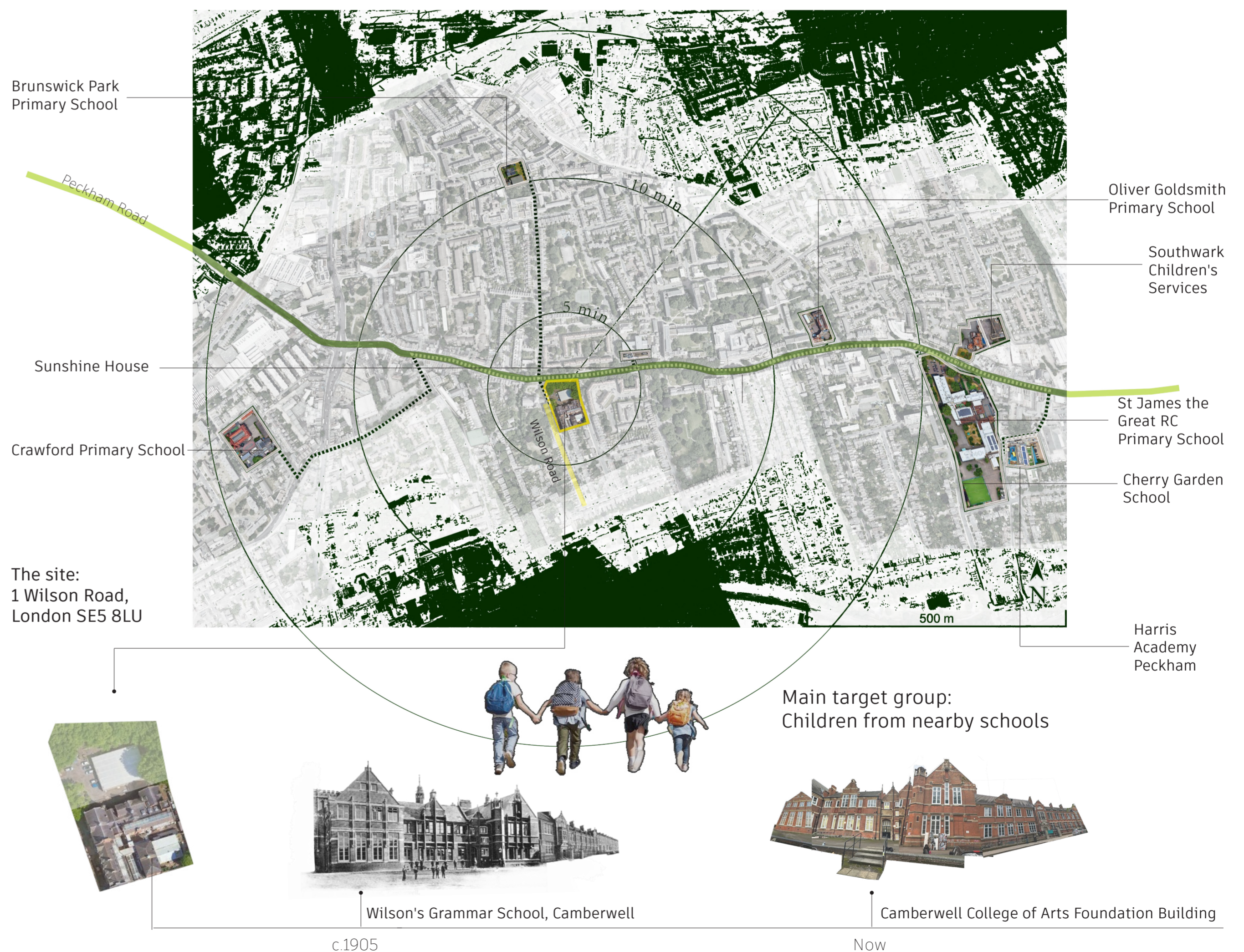
*A sound-based intervention
to revive a forgotten play space*

Project Aim

The project aims to revive the forgotten identity of a former school playground. By repurposing abandoned shipping containers and activating the narrow voids between them with sound-carrying pipes, This intervention responds to contemporary social challenges such as the loss of public play spaces, urban disconnection, and the lack of sensory engagement in children's learning environments.

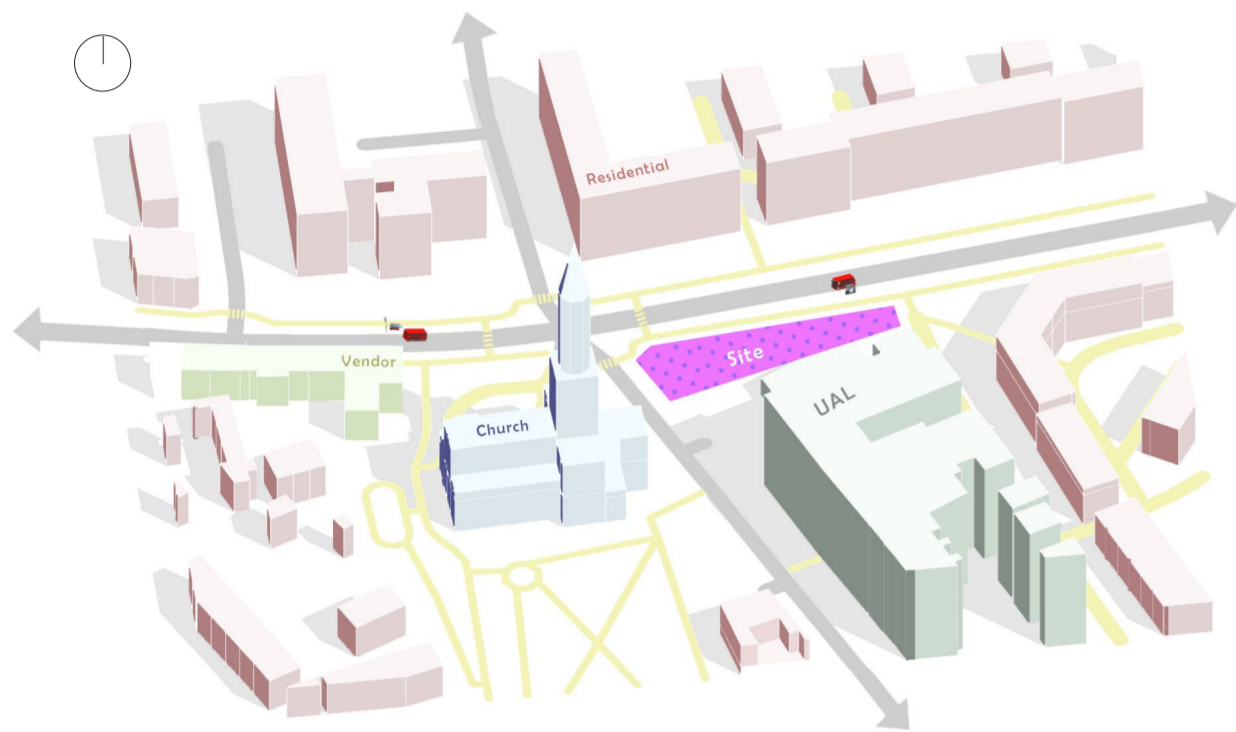
Mapping

The site was formerly the playground of Wilson's Grammar School and is now part of the UAL Foundation Building. Despite its central location, it is rarely used and has largely been forgotten over time. It is surrounded by dense residential areas and several primary schools, making it an ideal location for a project aimed at children.

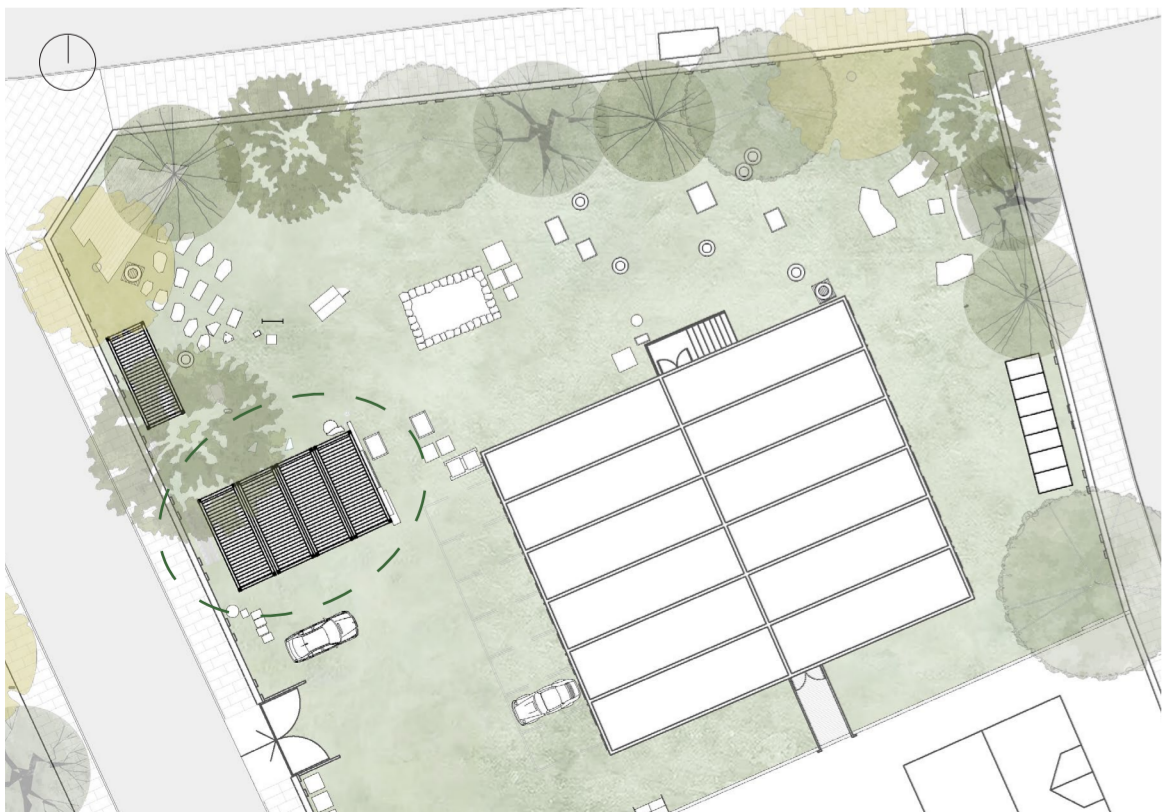


Site Analysis

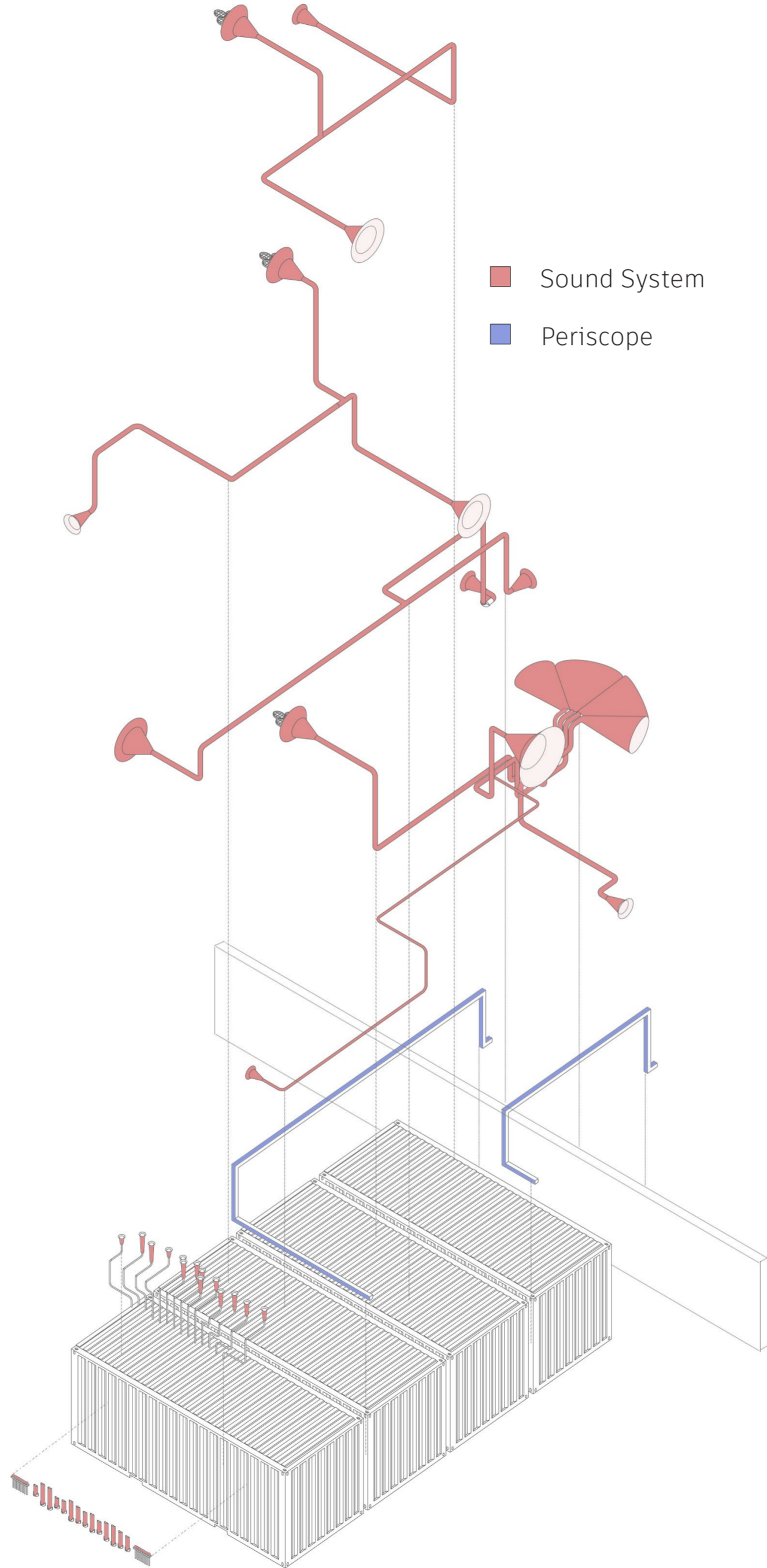
Positioned at a busy intersection and adjacent to a bus stop, the site benefits from high visibility and accessibility. The nearby church often hosts community events, making this a vibrant place rich in culture and activities.



At the heart of the proposal is the adaptive reuse of a series of abandoned shipping containers currently occupying the site. These containers offer both physical structure and spatial potential, serving as the foundation for reimagining the space as an interactive, child-focused playground. By activating the site and creating stronger visual and sensory connections with the street, the project aims to transform this neglected corner into a vibrant hub of play, learning, and community engagement.

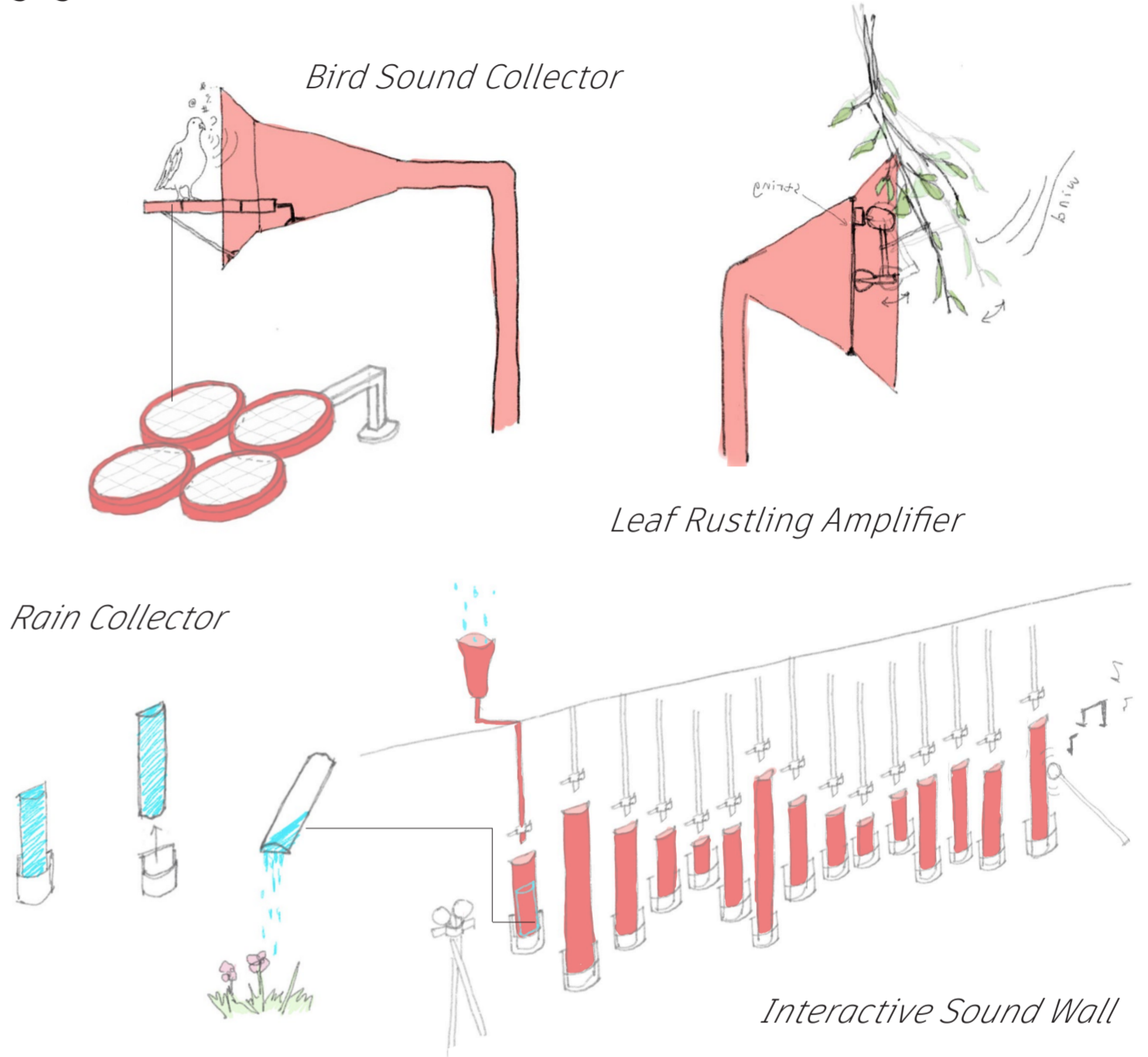


Exploded Drawing

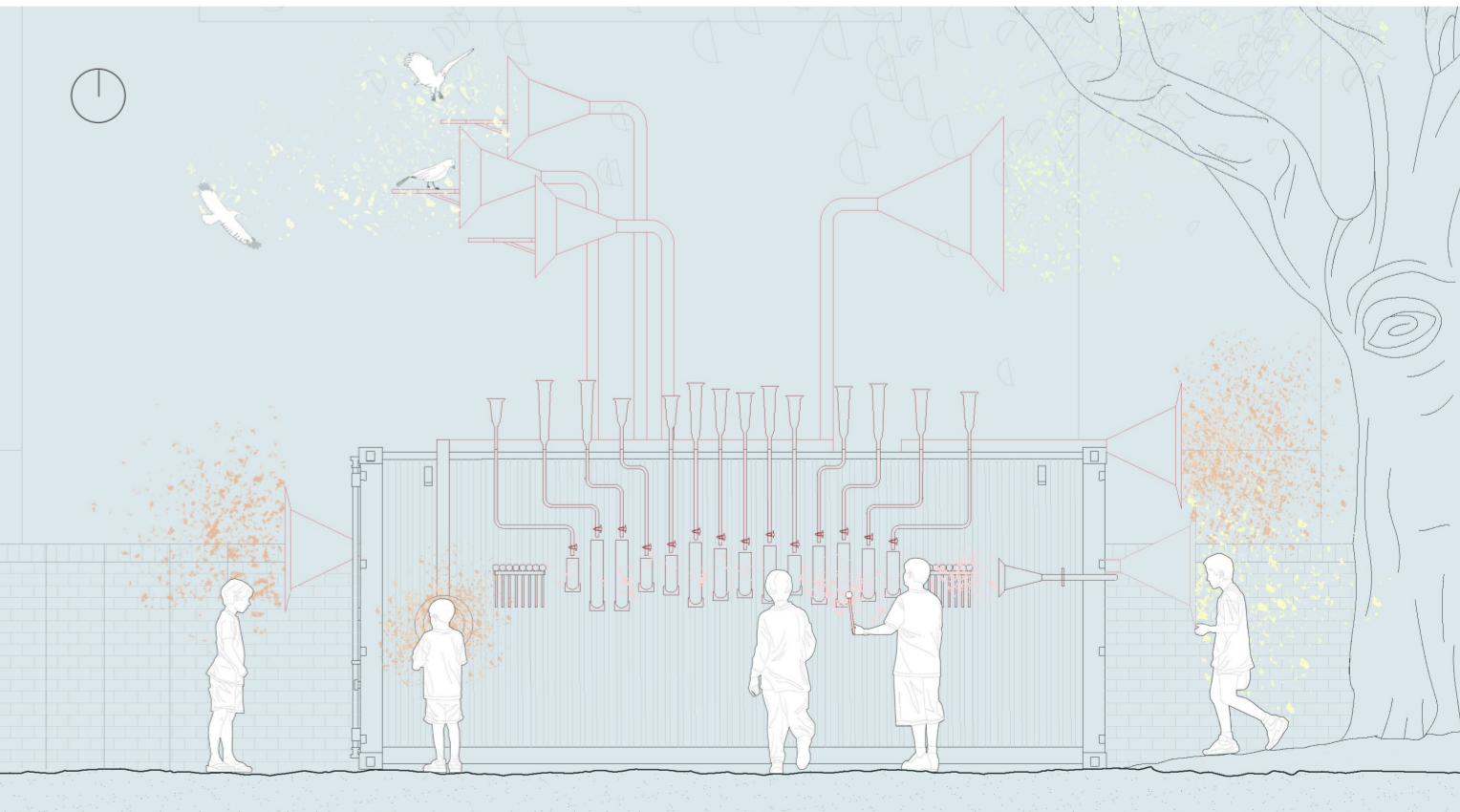


Design Details

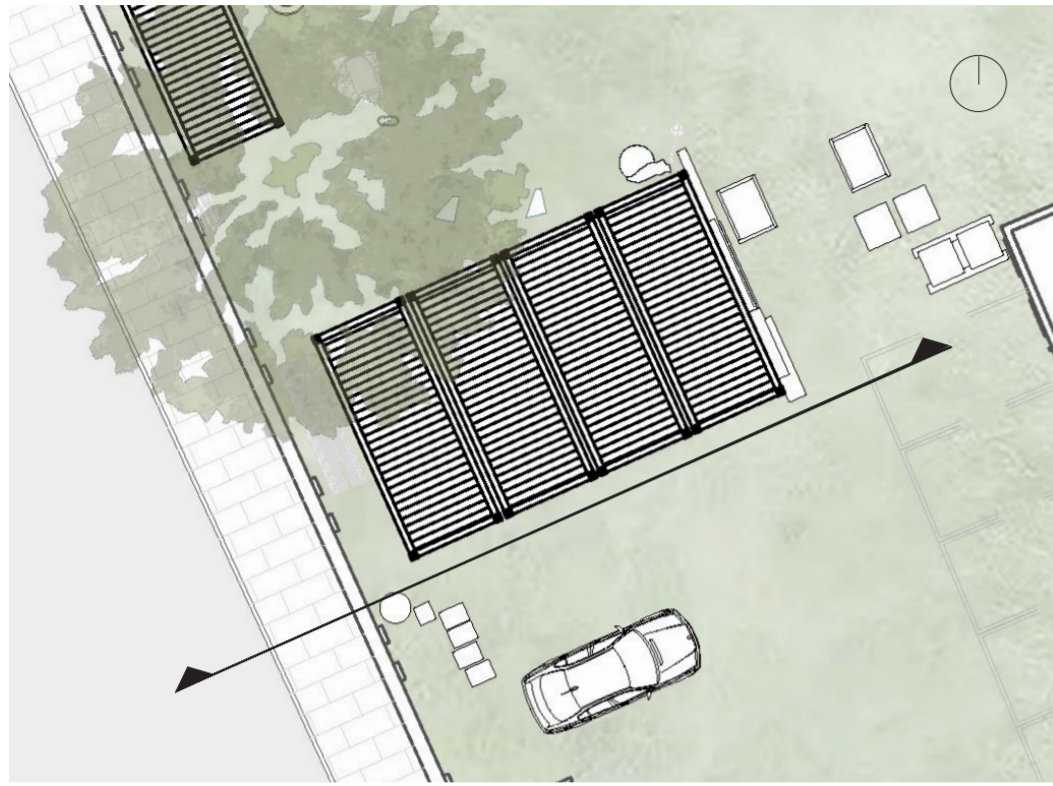
The unused small spaces are transformed into a network of sound-based installations. Pipes are used not only as physical connectors but also as playful channels for sound transmission and sensory engagement.



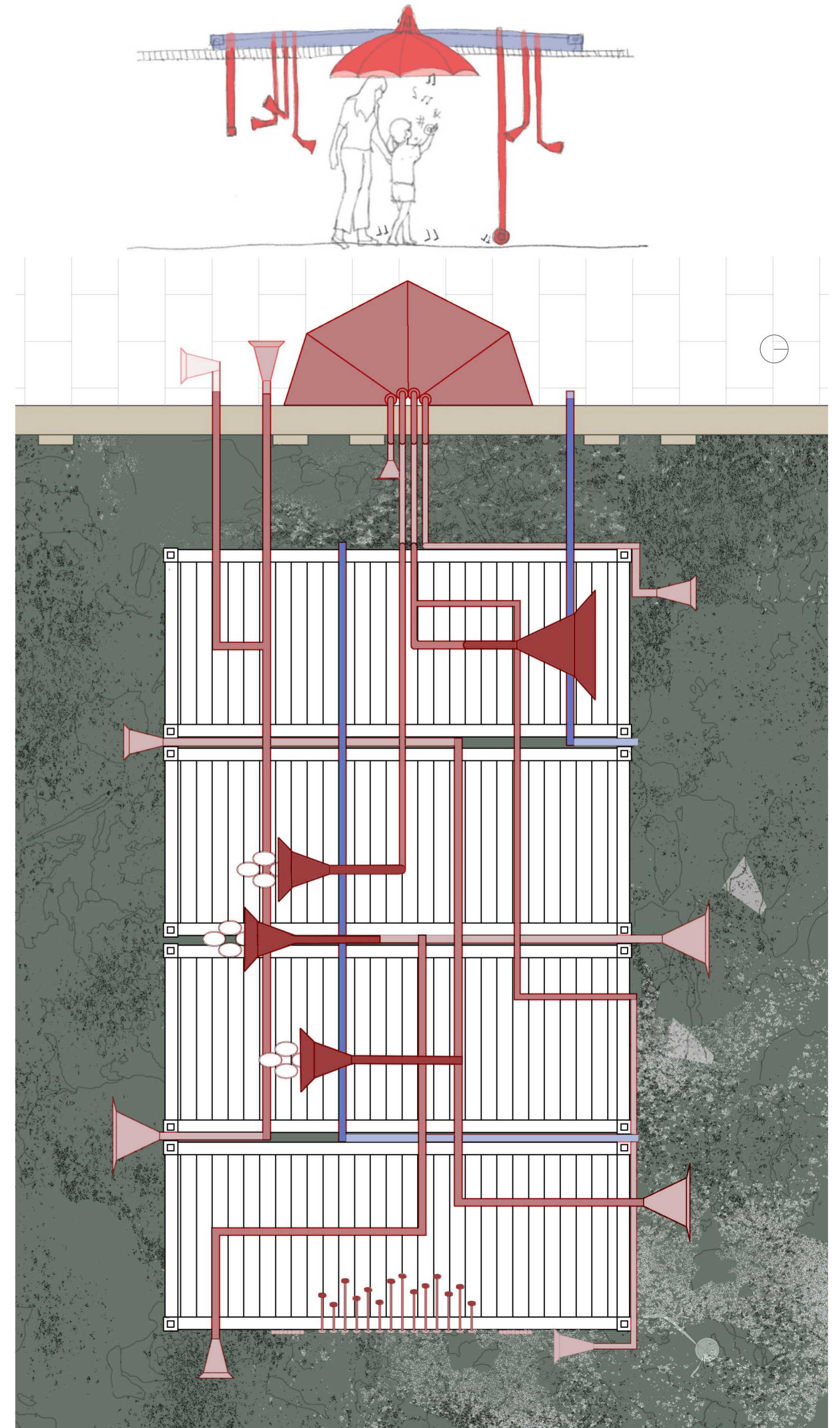
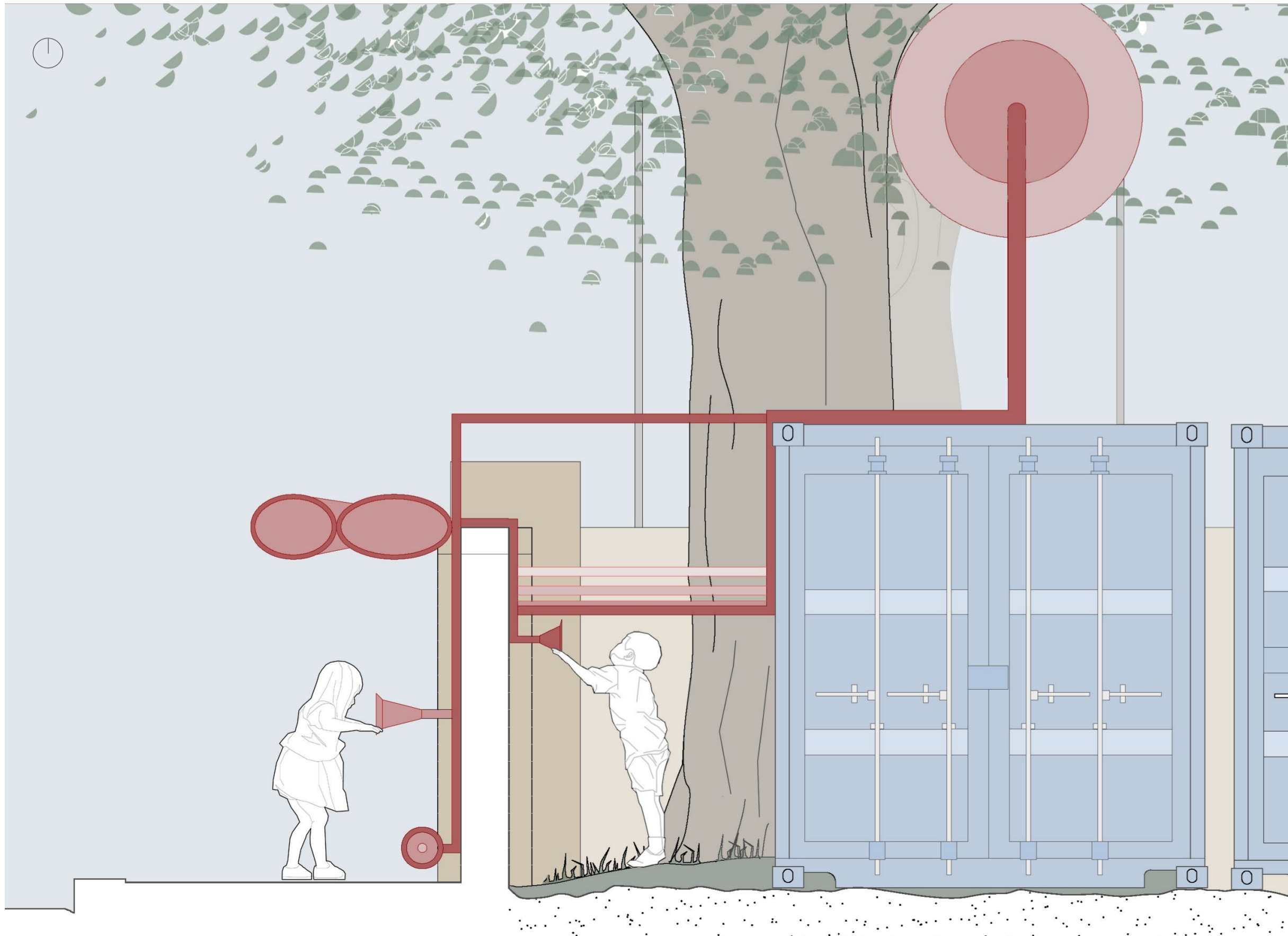
By collecting sounds from nature and turning them into interactive experiences, children are encouraged to explore, listen, and create.



Inside and Outside



A key focus is to enhance the interaction between the interior playground and the adjacent public sidewalk. Through the integration of various sound-making devices embedded in the pipe system, children can produce and share sounds that travel beyond the site's boundaries, inviting curiosity and engagement from passersby. In this way, the playground becomes a dynamic space of communication – both playful and architectural – reconnecting the past with the present and the inside with the outside.



Final Outcome

