

TIERRA ZEN JOURNEY

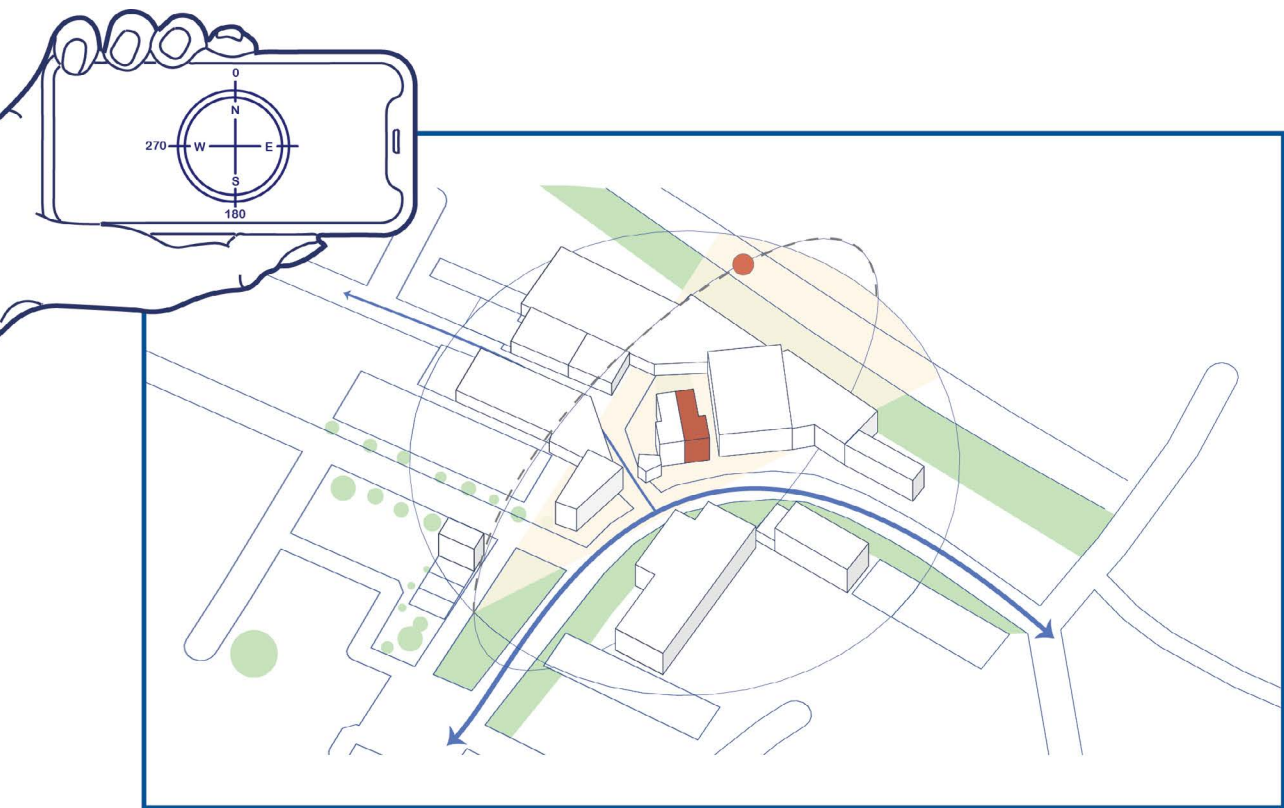
Reclaiming the Ruin: A Sanctuary of Stillness and Sensory Renewal

This project transforms Safehouse 1—a Victorian ruin and former photography landmark in Peckham’s Copeland Park—into a meditation and incense experience space for Tierra Zen, a brand synergizing natural living with spiritual well-being.

Original architectural elements—arched porches, weathered brickwork, eroded plaster, exposed timber structures, and double-height volumes—are preserved not as static relics, but as active carriers of atmosphere. These decaying textures catalyze sensory introspection, transforming material fragility into vessels of stillness, while supporting ecological performance through passive climate-responsive strategies.

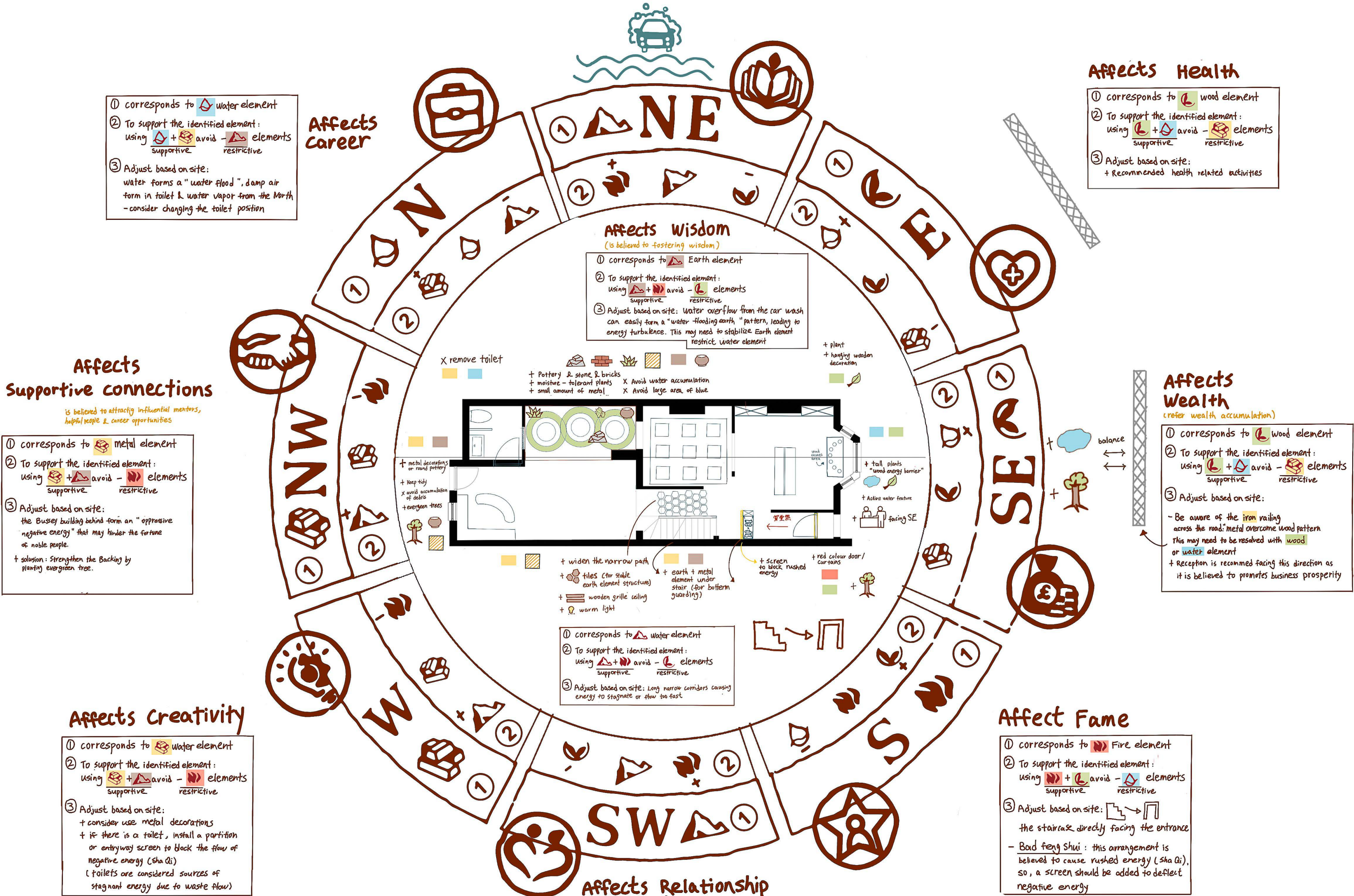
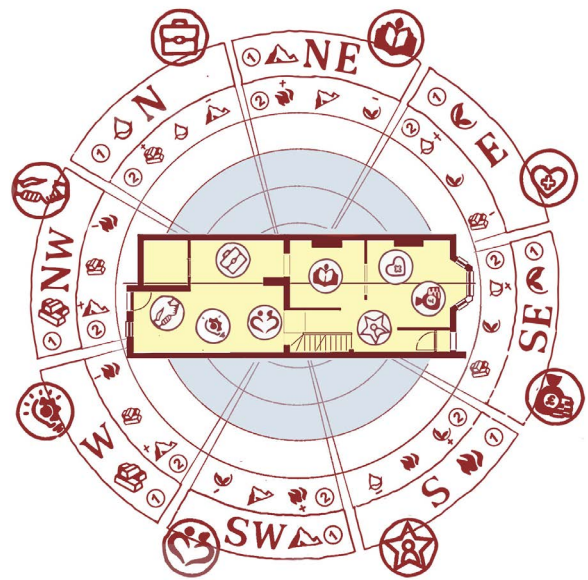
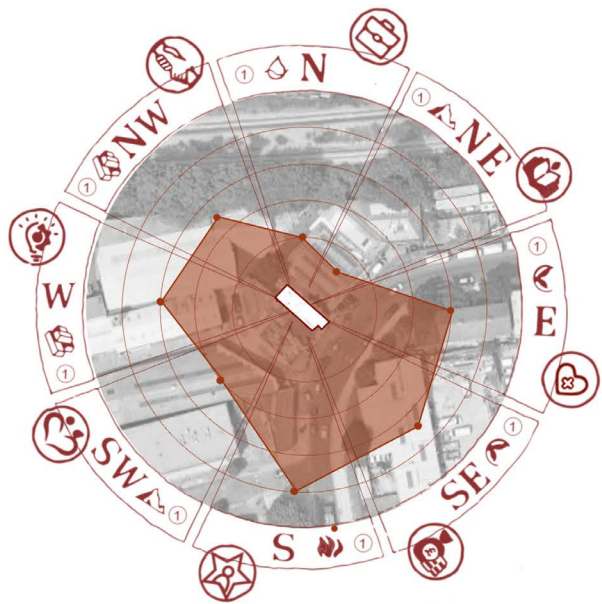
Aligns with Tierra Zen’s philosophy, the project integrates Feng Shui as a spatial framework—not as cultural motif, but as sustainable environmental intelligence. Drawing on principles such as Five Element balance, directional energy flow, and sensory thresholds, the design synchronizes natural forces with user needs. These strategies guide the arrangement of ventilation, thermal zoning, and spatial rhythm. In doing so, the project repositions Feng Shui as a tool for experiential well-being and ecological design.

As an adaptive reuse proposal, it demonstrates how a historic structure can be revived through low-impact interventions—preserving its layered identity while crafting new forms of calm, connection, and narrative continuity.



Assessing Directional Qualities through the Five Elements

Using Feng Shui principles, I analyzed the Safehouse site by examining its surroundings and identifying key natural elements—Wood, Water, Fire (Sun), Metal, and Earth. These elements are crucial in determining whether the location supports prosperity and well-being, including aspects like career, health, reputation, and wealth.



FENG SHUI AS ADAPTIVE REUSE INTELLIGENCE

Process - Directional Flow - Qi Flow

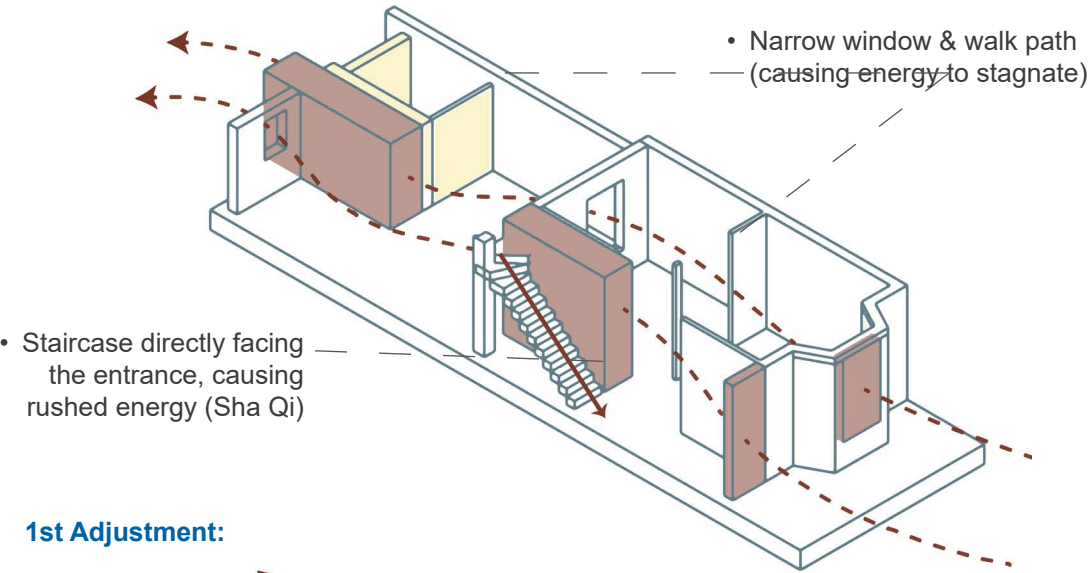
ventilation & natural sunlight

The flow of 'Qi' in spatial layout refers to the movement of energy through a space, influenced by elements such as wind, water, human circulation paths, orientation, and structural design. It is a core concept in Feng Shui, aiming to harmonize natural and human-made environments.

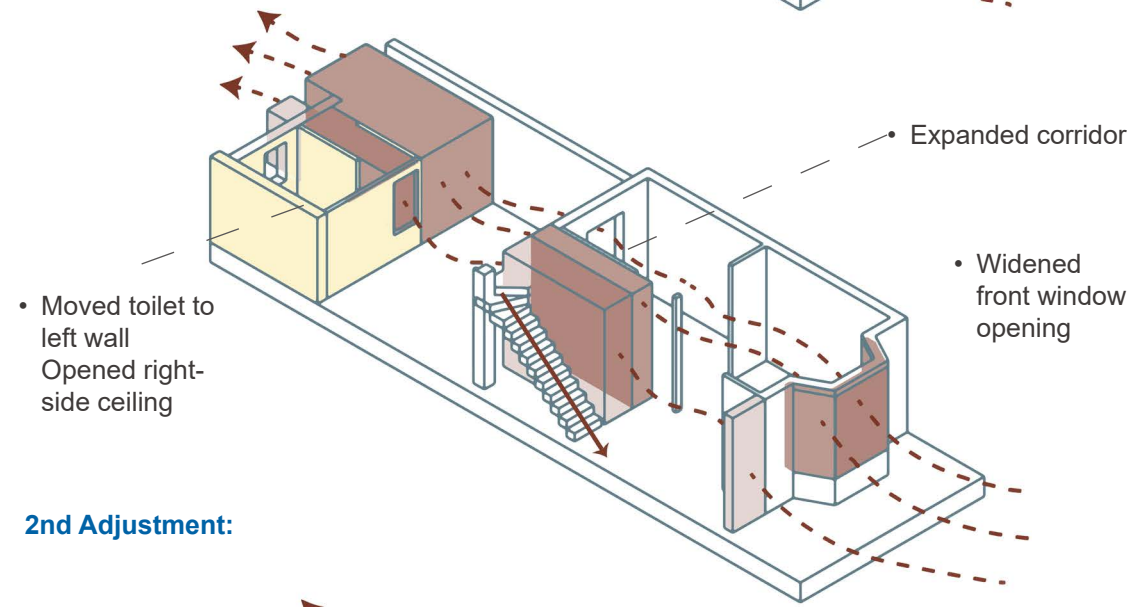
Aims:

- Smooth Circulation
- Gathering Qi
- Blocking Sha Qi (rushed energy)

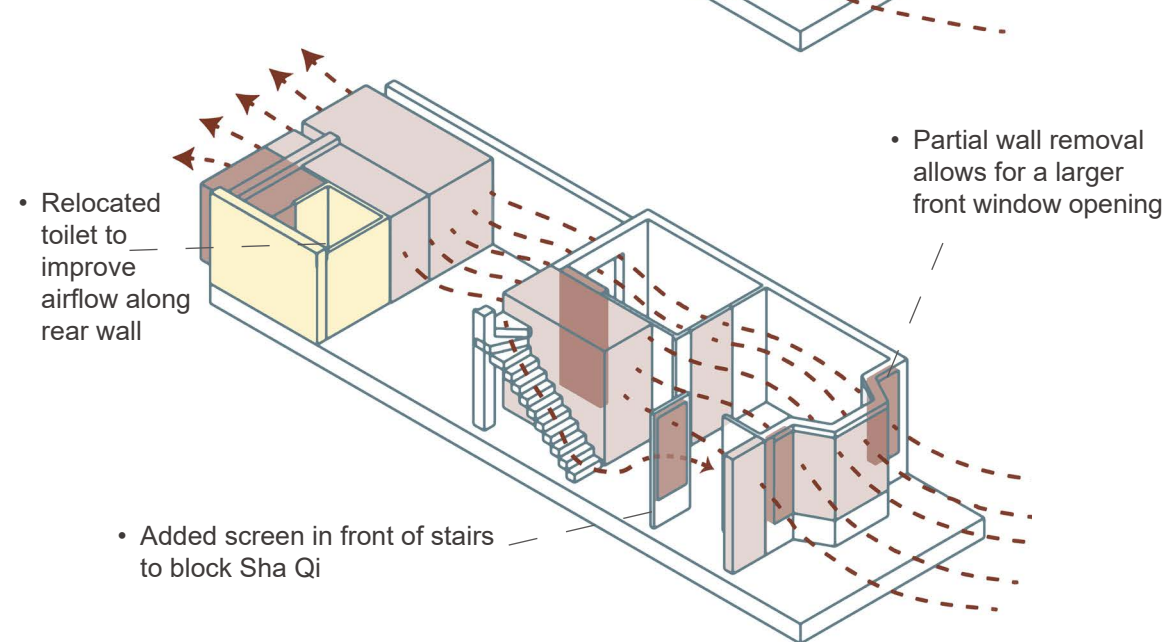
Original Structure:



1st Adjustment:



2nd Adjustment:

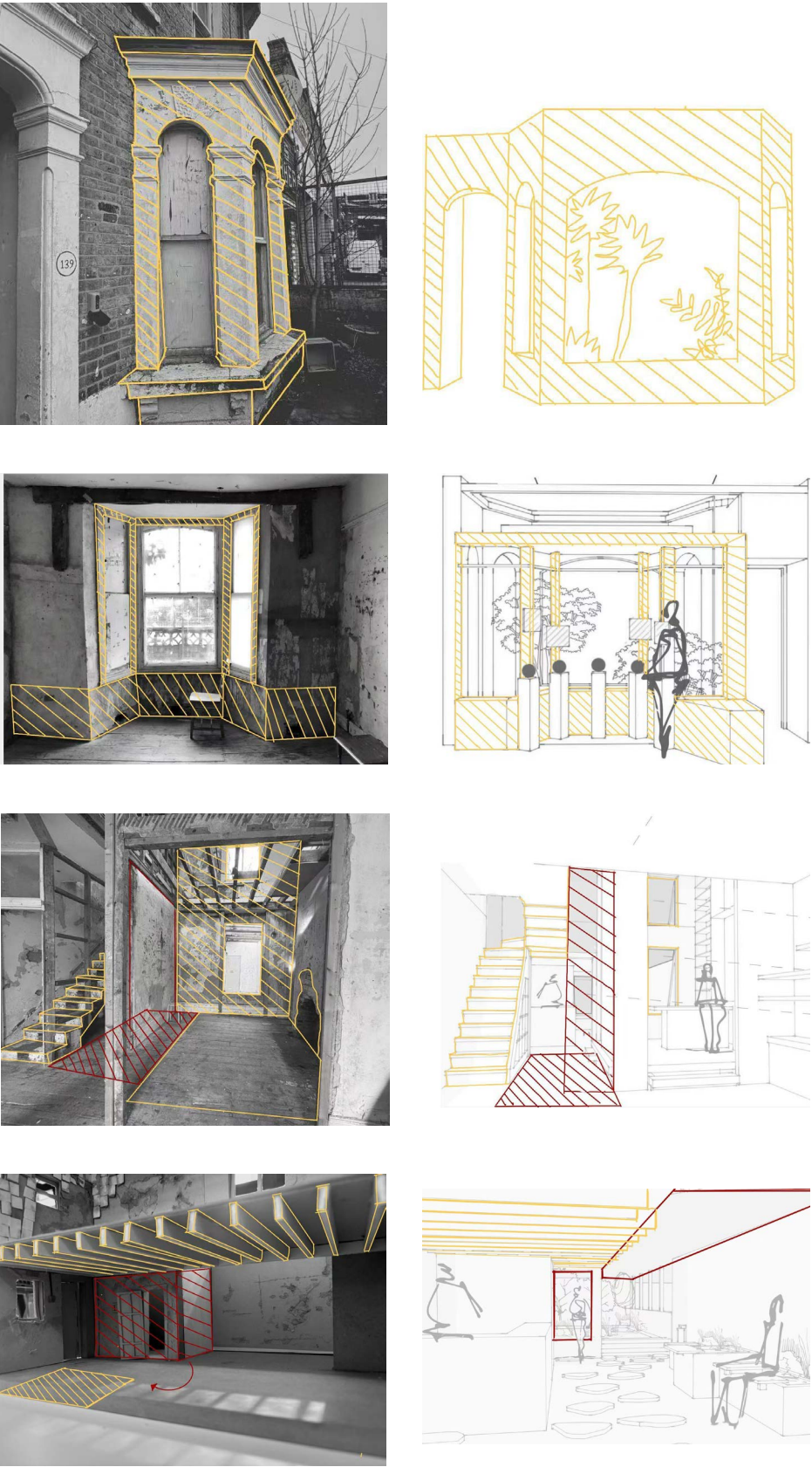


Testing using physical models



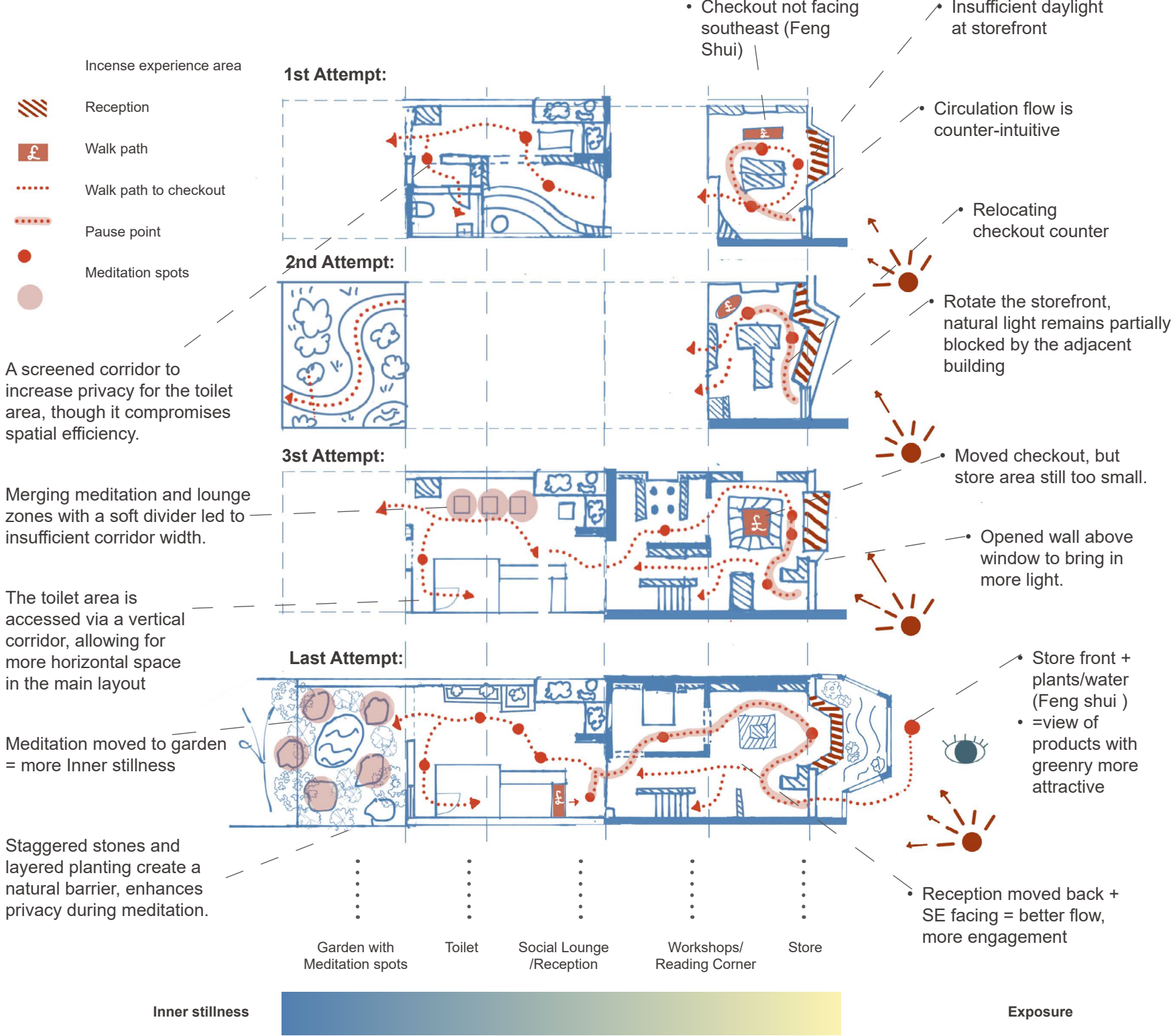
Light changes before & after the adjustments

Process - wlnspiration from the Existing Structure



Process - Directional Flow - Human Flow

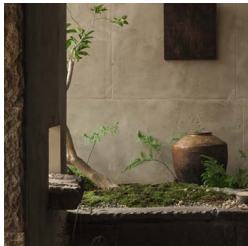
circulation, spatial comfort, and sensory transitions



DRAWINGS OF THE SCHEME



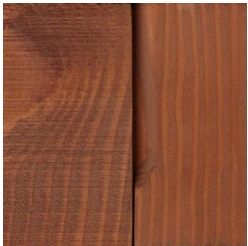
Laths+Plaster+natural fibres



Pottery + Gob Wall



Rubble Stone Wall



Douglas fir Wall



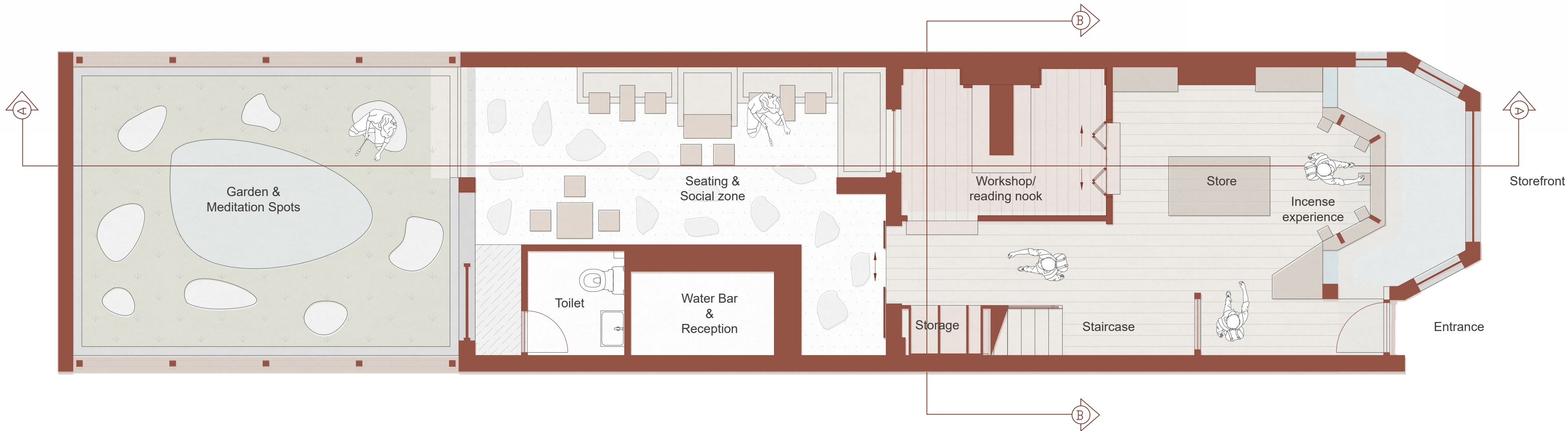
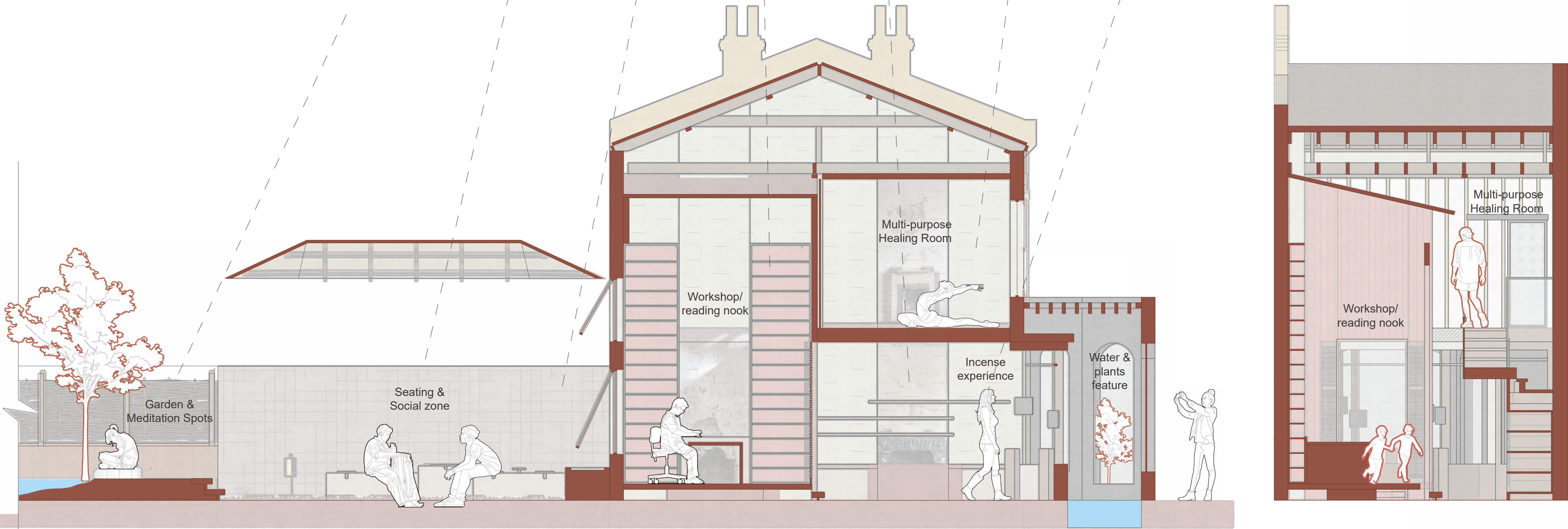
Fireplaces



Original wall texture



Oak



SPATIAL DETAILING



Store Front + Plants/Water: view of products with nature, echoing tierra zen's philosophy

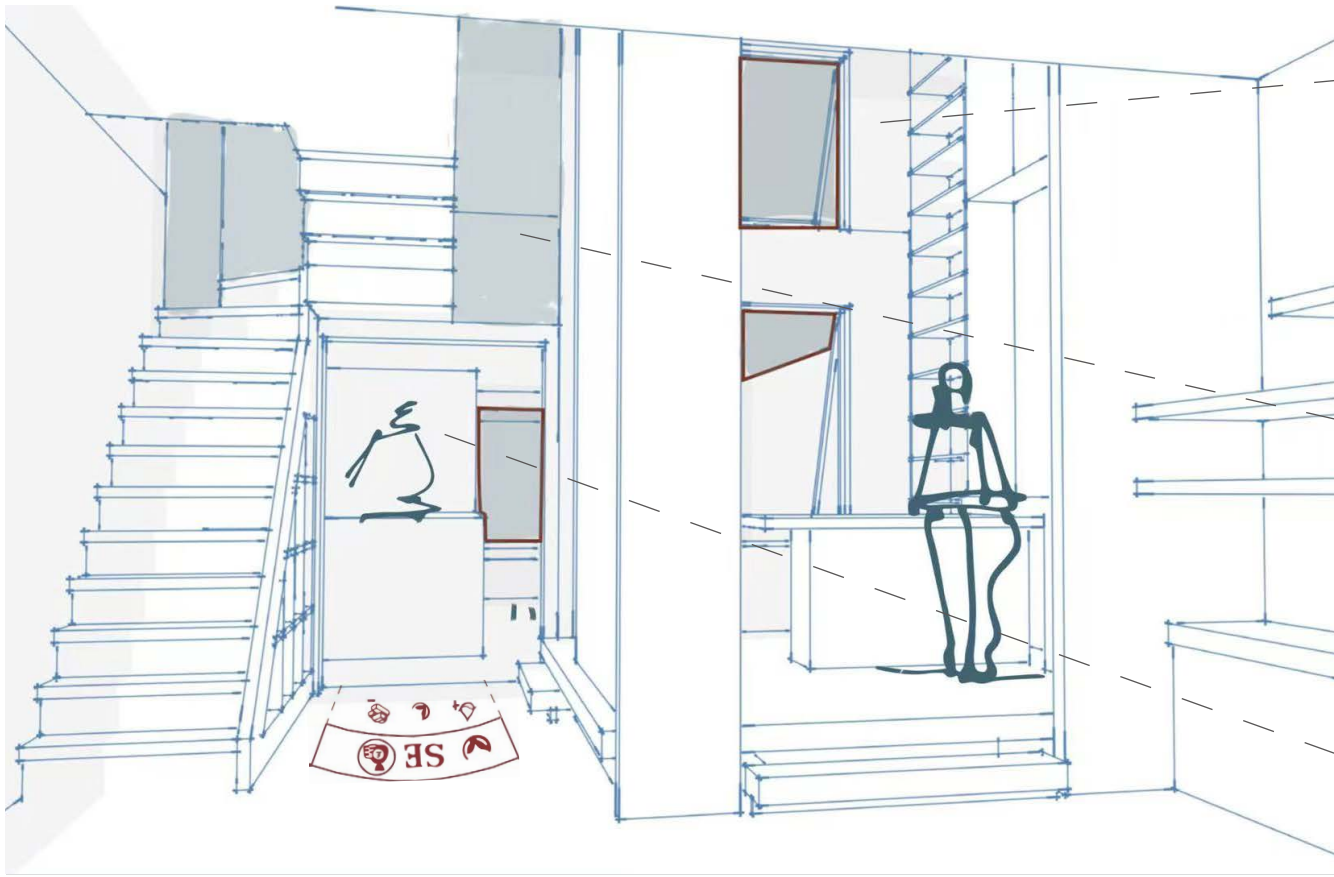
Incense experience area:

- According to Feng Shui strategies, wood and water elements are recommended in the southeast direction. The SE-facing incense display incorporates water and plants to enhance qi, while reflecting Tierra Zen's philosophy of natural and mindful living.



Social Lounge (Water Bar + Seating): informal tea-sharing space with herbal drinks

- Previously enclosed, now opened up for height and light.
- Toilet moved left, aligning with the canopy-to-garden connection.
- Stone paving links the water bar and seating area, defining a semi-outdoor threshold.



Reception & Water Bar ← | → Workshop & Reading Corner: multifunctional & flexible use of space

Shared double-height structure:

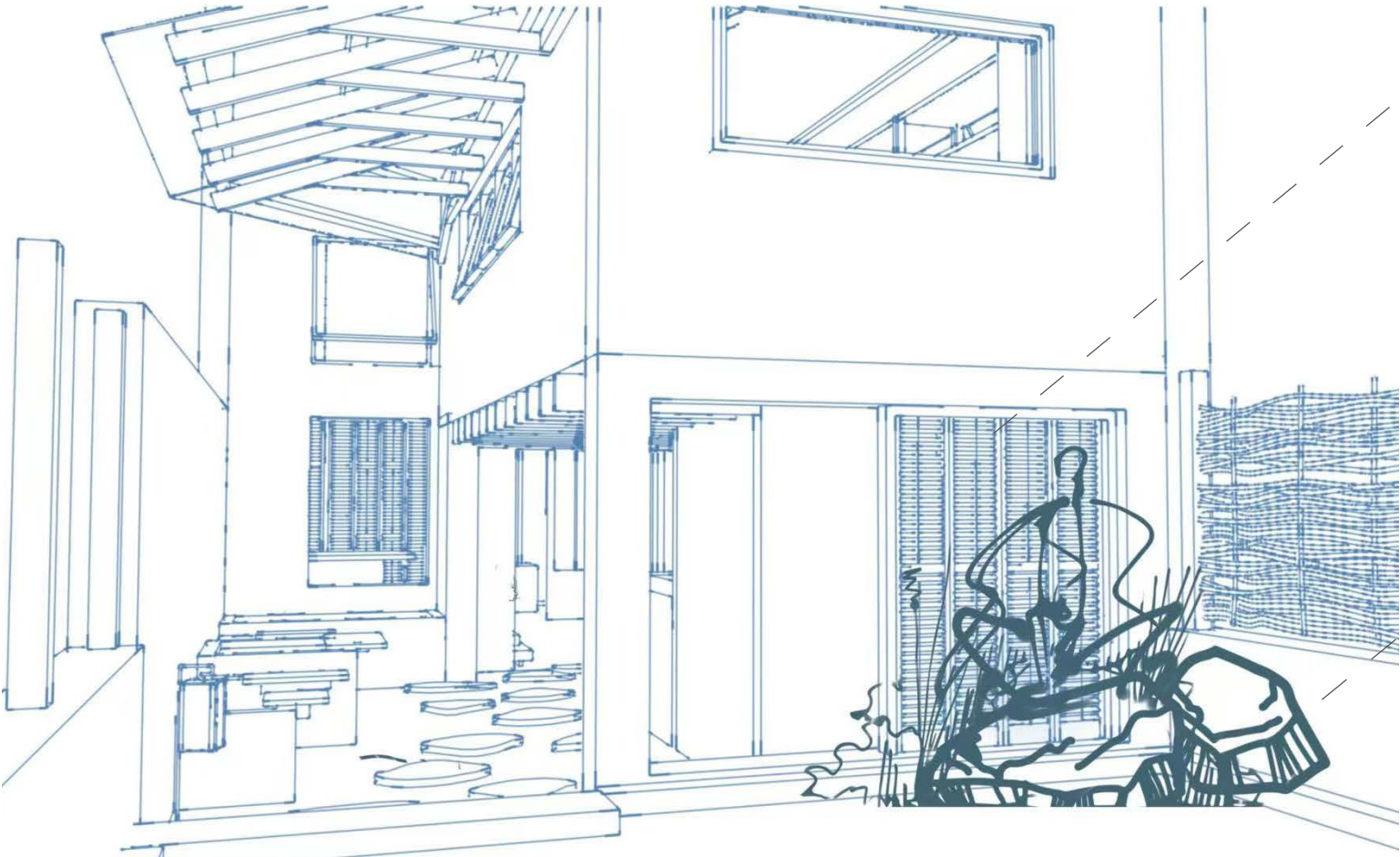
- Brings natural light to ground level
- Creates spatial intimacy and functional separation
- Supports flexible use: stillness as default, activity as occasional
- Serves as a quiet focal point in the layout

Second Void:

- Corridor widened and opened vertically to form a second void, complementing the existing double-height space and creating breathable volumes within the structure.

Reception:

- multifunctional use: with water bar
- SE-facing for Feng Shui/ business prosperity
- Encourages better flow and visitor engagement



Garden, Meditation Spot

- The toilet area is accessed via a turning pathway, enhancing privacy while avoiding direct visual alignment with the tea and social lounge areas.

Garden, Meditation Spot

- Feng Shui forest reduce urban heat islands, enhance microclimate cooling through evaporation, and channel airflow.
- Natural stones platform grounds the meditation spot. Positioned at the far end of the space, it minimizes distractions and enhances immersion in a tranquil, nature-connected setting.



Store Front + Plants/Water:
View of products with nature, echoing tierra zen's philosophy



Reception & Water Bar ← | → Workshop & Reading Corner:
multifunctional & flexible use of space



Garden, Meditation Spot