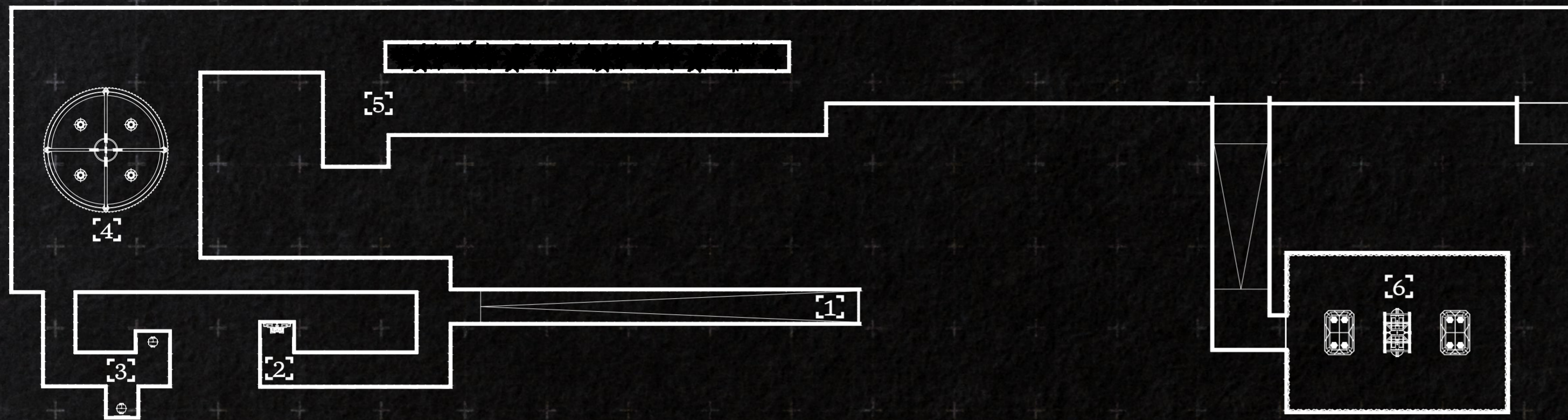


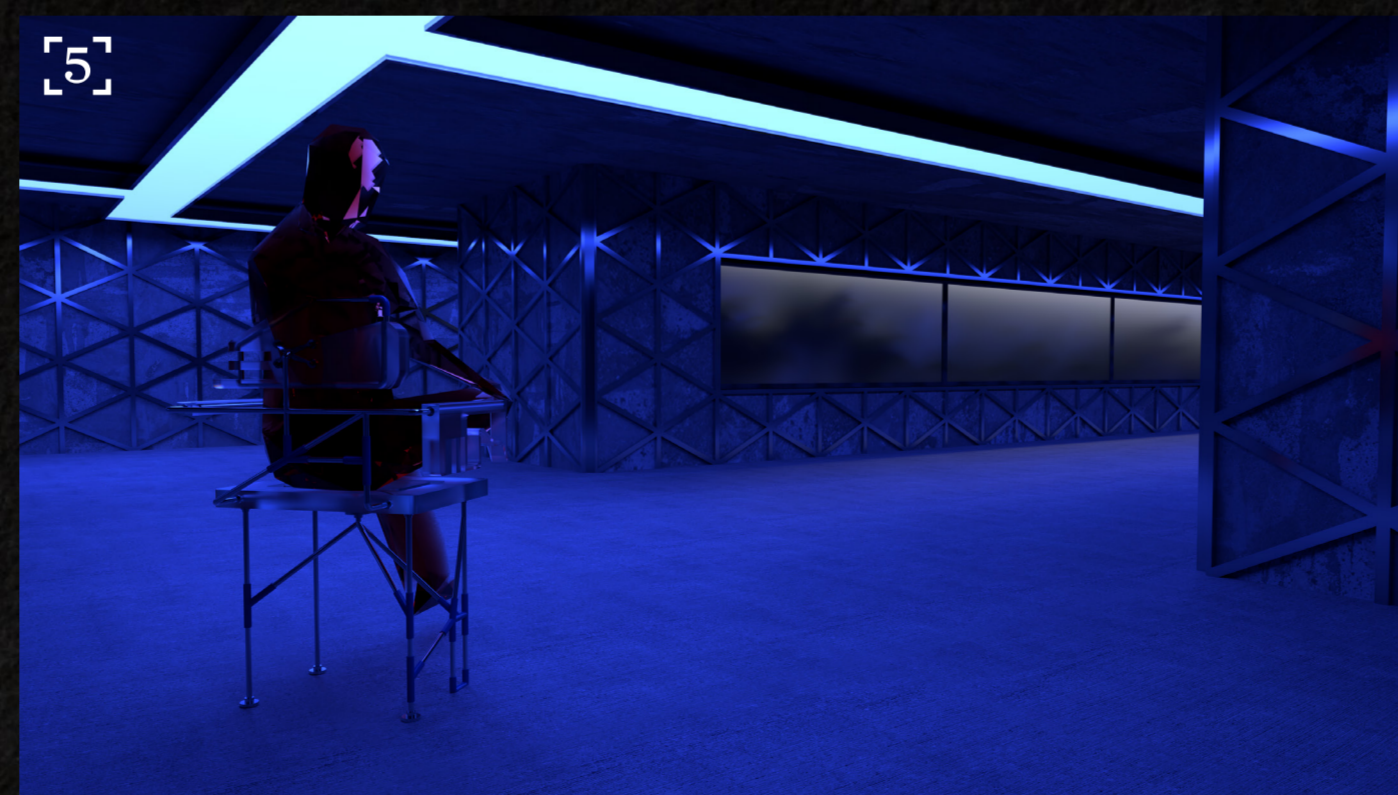
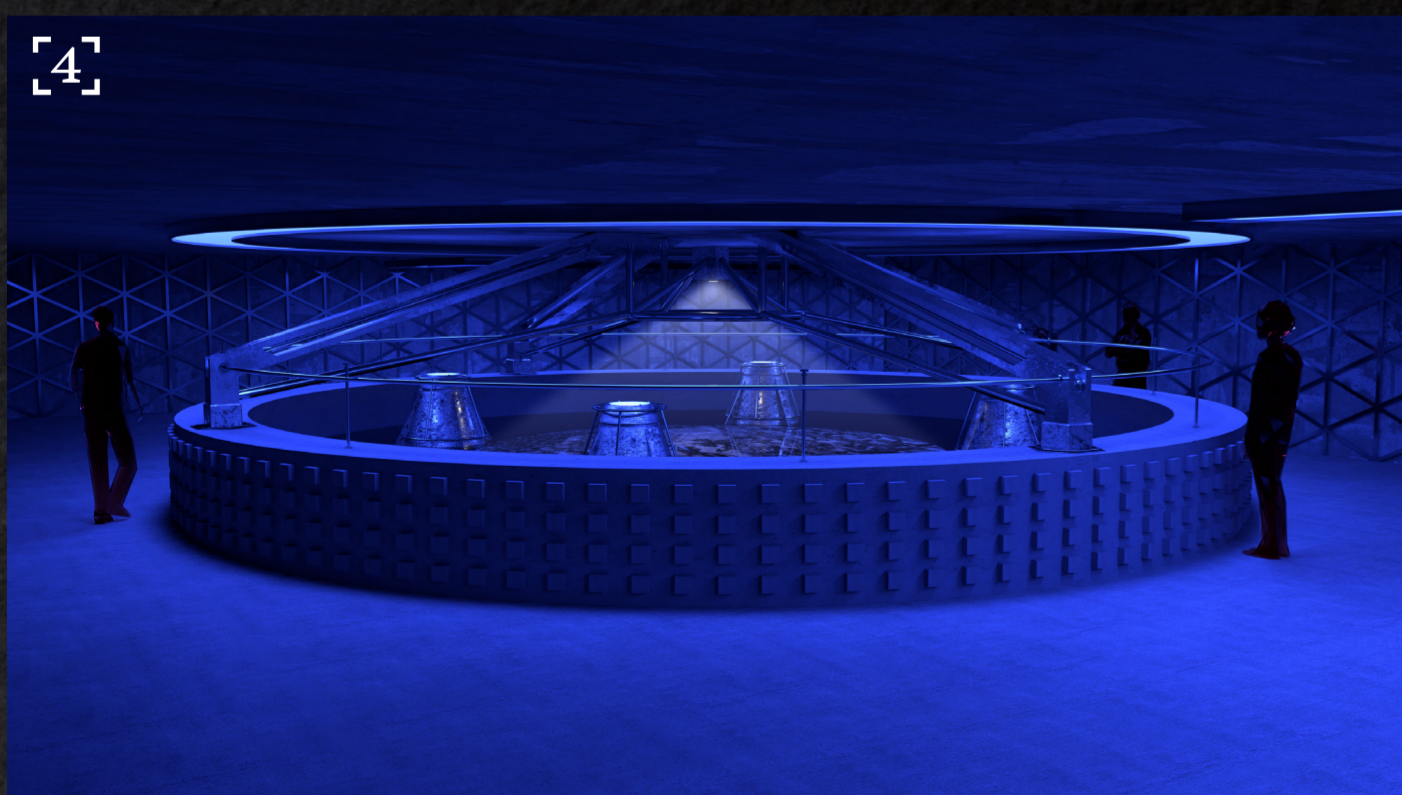
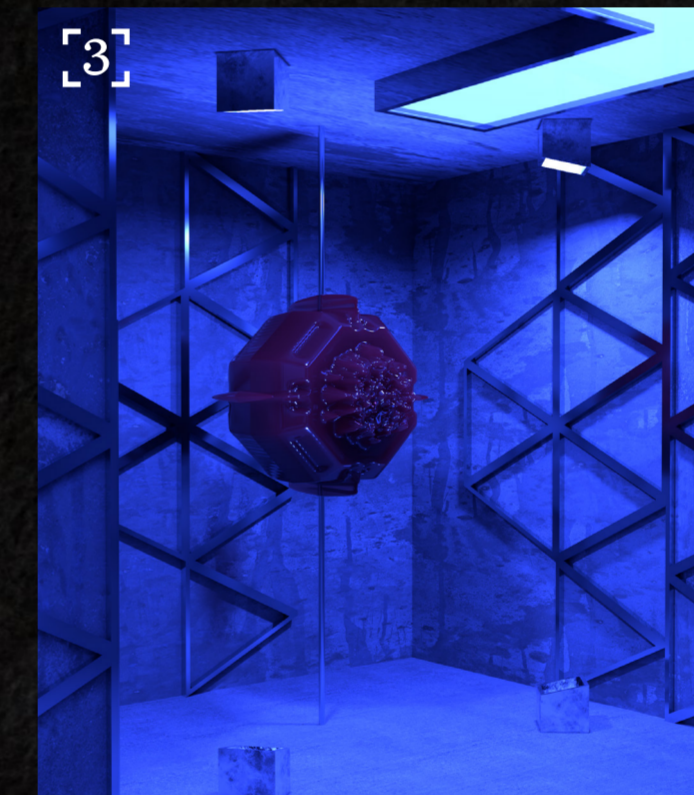
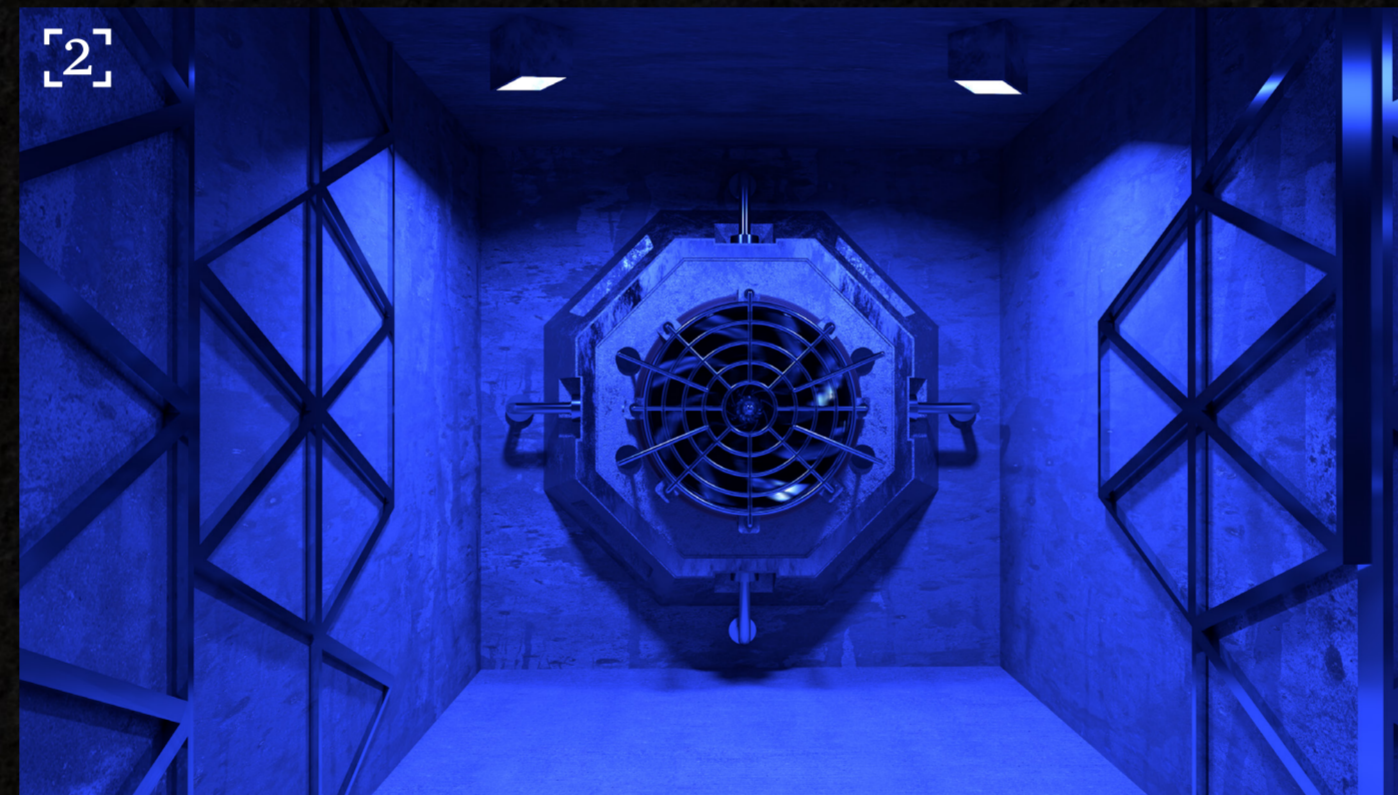
URBAN SEDATION

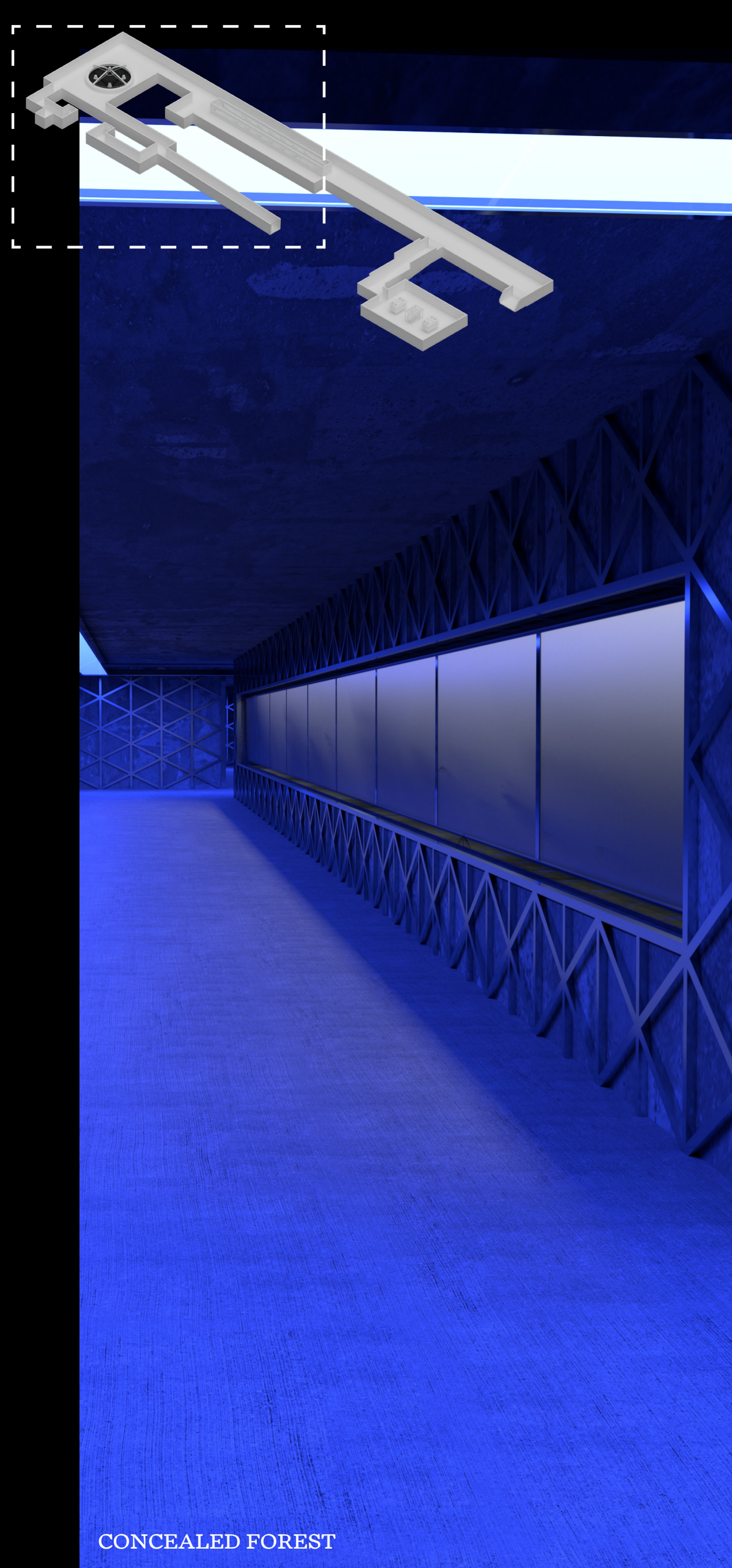
JAKE HANCOCK

MY PROJECT ACTS AS AN EXPERIMENTAL SPATIAL INSTALLATION WITHIN PECKHAM LEVELS, A POTENTIALLY HYPERBOLIC CONTEMPLATION OF OUR FUTURE URBAN ENVIRONMENTS. EXPANDING ON CURRENT SPATIAL MODES OF OPPRESSION FROM BLUE LIGHTING WHICH IS USED AS A TOOL TO PREVENT SUICIDES AT TRAIN STATIONS WHILST SIMULTANEOUSLY MAINTAINING A LOYAL WORKFORCE, ONE SPATIALLY DISALLOWED FROM FINDING AN ESCAPE FROM THE DOMINANCE OF CAPITAL. AND THEN DELVING INTO THE FUTURE POSSIBILITIES OF SLEEP AND REST, IT'S CURRENT PARANOID REALITY AND ITS FUTURE AVOIDABLE STATE.

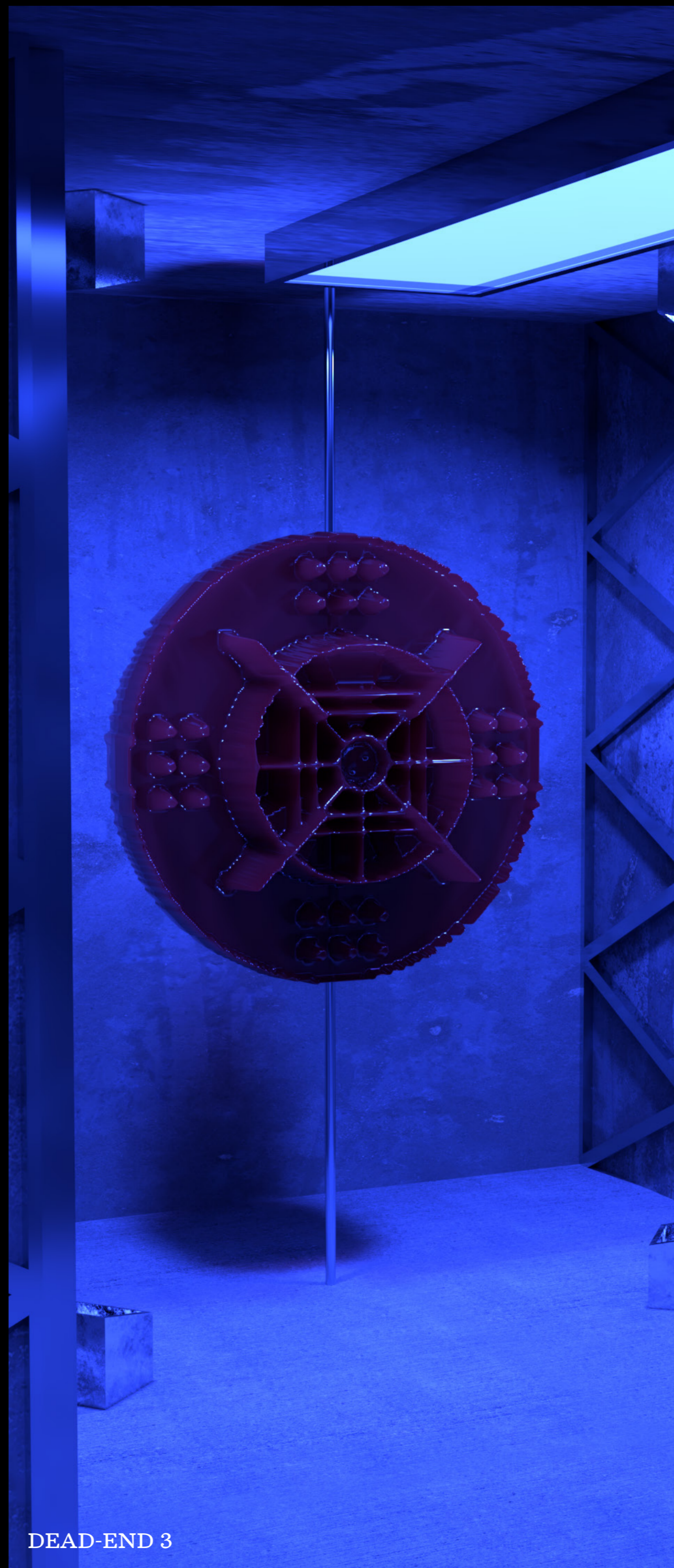


- [1] ENTRANCE HALLWAY
- [2] DEAD-END 1
- [3] DEAD-END 2-3
- [4] REFLECTION POOL
- [5] CONCEALED FOREST
- [6] RESTING CHAMBER

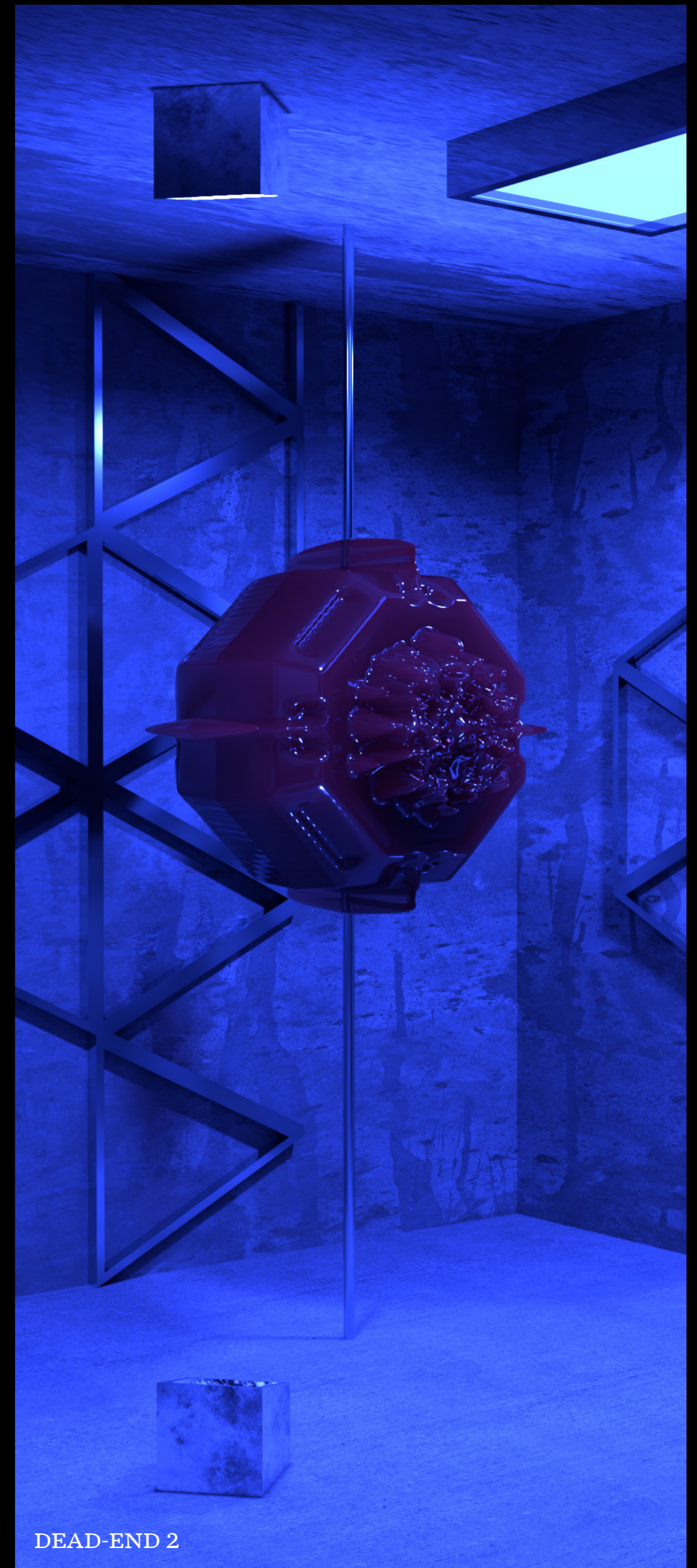




CONCEALED FOREST



DEAD-END 3



DEAD-END 2



RESTING CHAMBER



FILM STILL - CAPSULE 2 DETAIL

I HAVE ALSO MADE AN ACCOMPANYING WALKTHROUGH ANIMATION/FILM OF THE SPACE AND PROJECTION. AVAILABLE AT: <https://www.youtube.com/watch?v=bT3I0fLwuWQ>