

VertiLeap

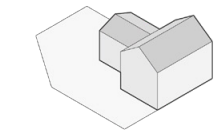
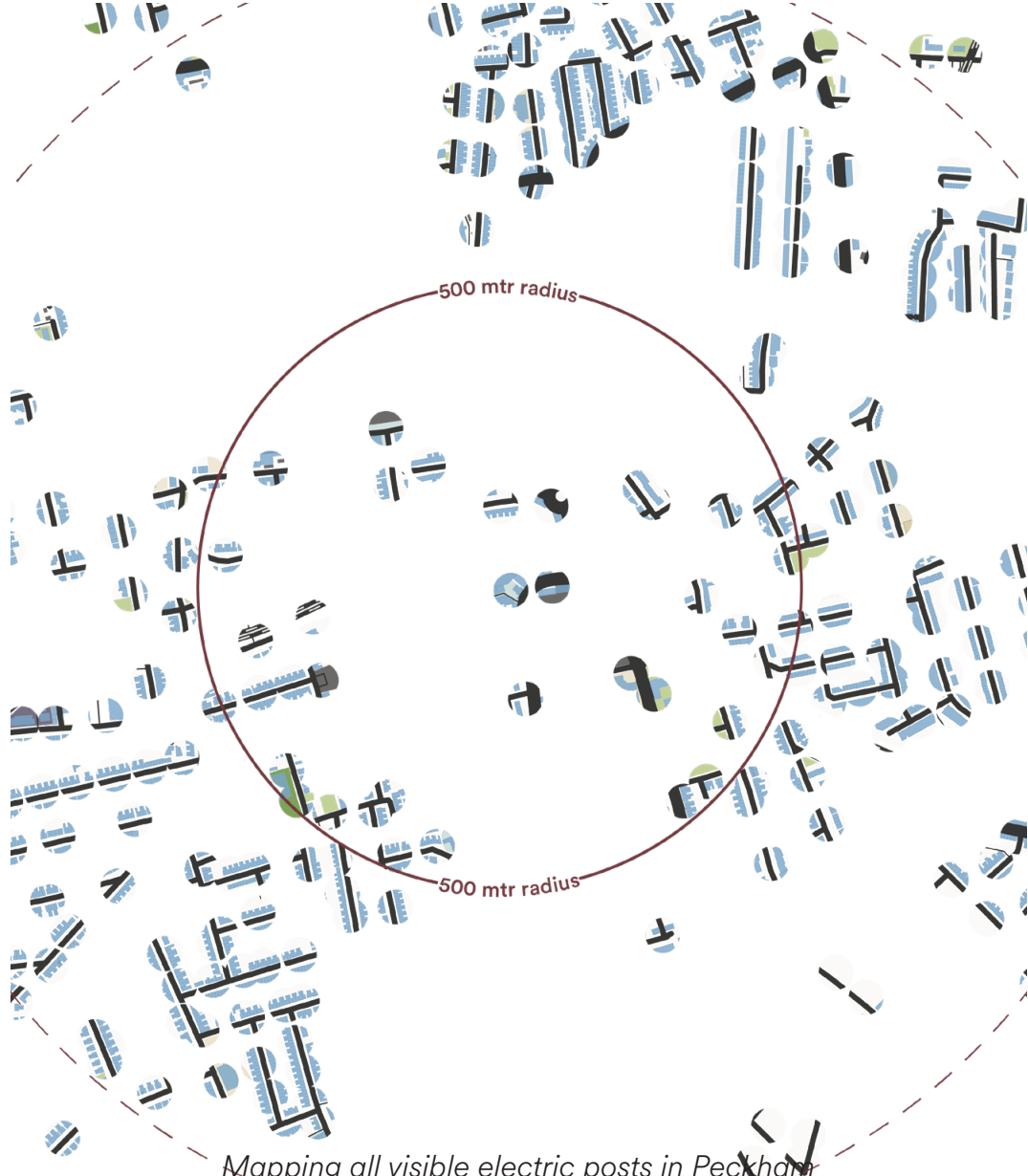
Karthik Khosla

A speculative Mobility Hub connecting Peckham to Central London in 2035.

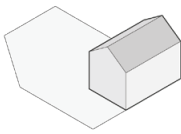
A new urban landmark designed for enhanced connectivity, this speculative air taxi mobility hub re imagines Peckham's future. The design extends the street vertically, turning movement into elevation, with open platforms that offer sweeping views across the city. More than a transport hub, it's a continuation of Peckham's street-scape, drawing from the area's rich history and vibrant present. By embedding aerial mobility into the neighbourhood's everyday life, the project connects technology with place and infrastructure with identity.



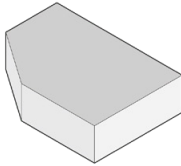
Taking inspiration from the locality, these wooden electric posts serve as visual anchors, subtly reflecting Peckham’s layered history shaped by industry and ongoing gentrification.



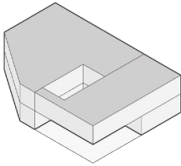
Original Structure



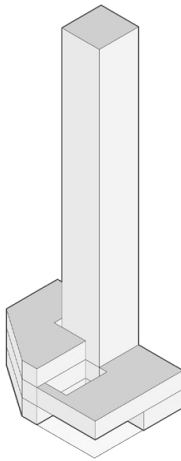
Demolition



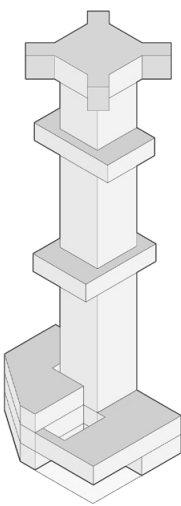
Mass



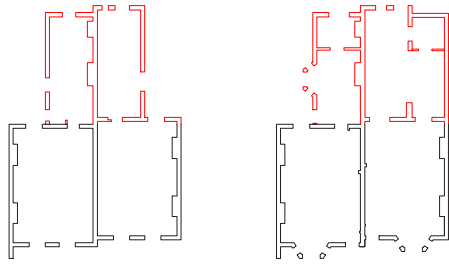
Voids



Extrusion



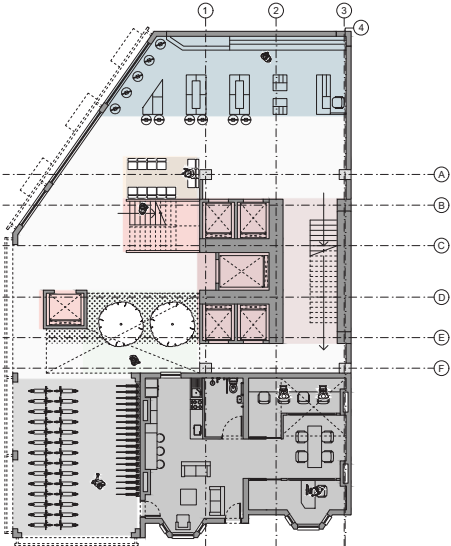
Levels



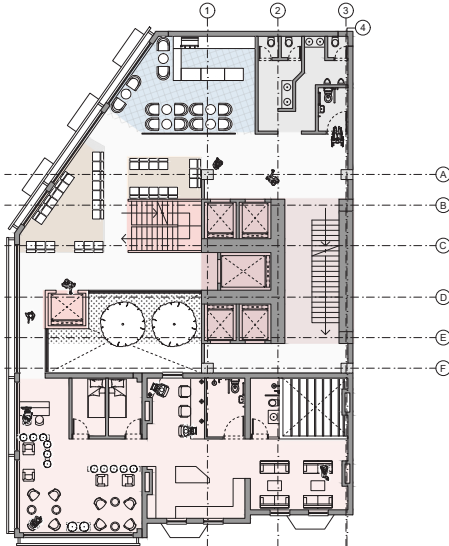
The existing structure was built in two phases and is now almost derelict. As a result, the front and back portions sit at different levels, with inconsistent floor heights and poor structural integrity further complicating reuse.

I therefore chose to demolish the rear section and repurpose the area as the location for the core of the proposed design.

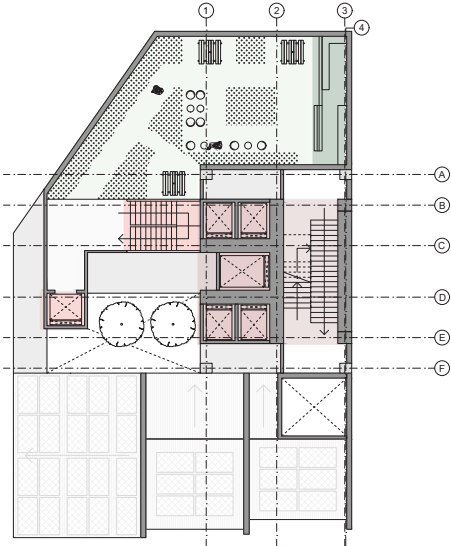
The structure’s design draws from the wooden electric posts found in Peckham.



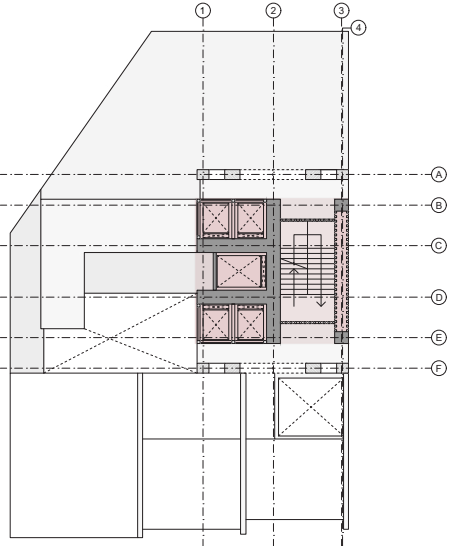
GF



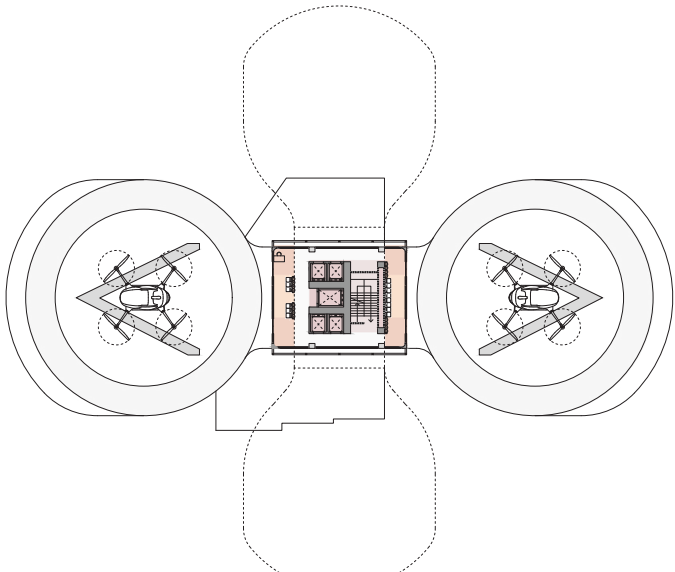
FF



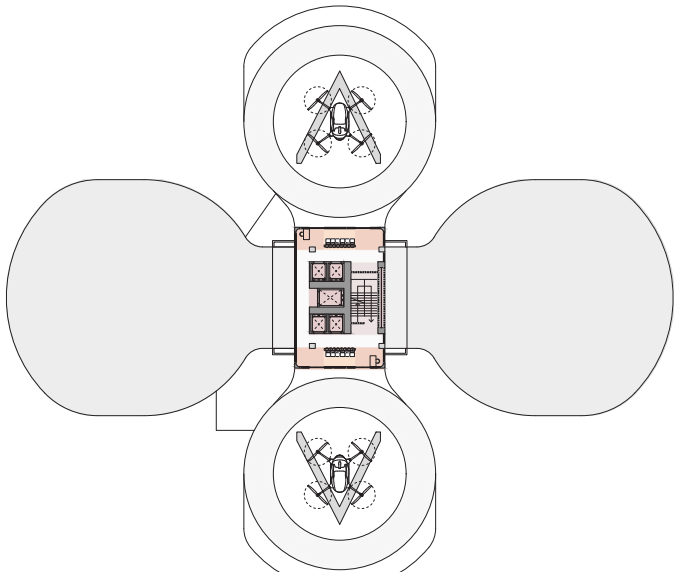
Terrace



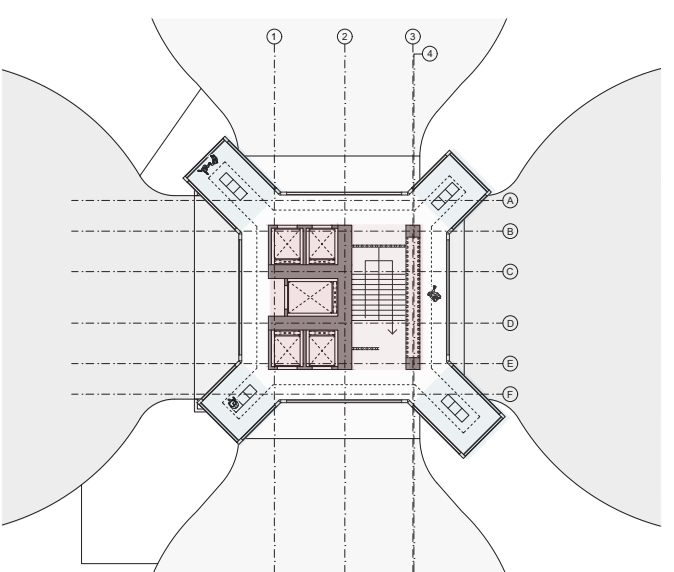
@+16700



Lvl 1



Lvl 2



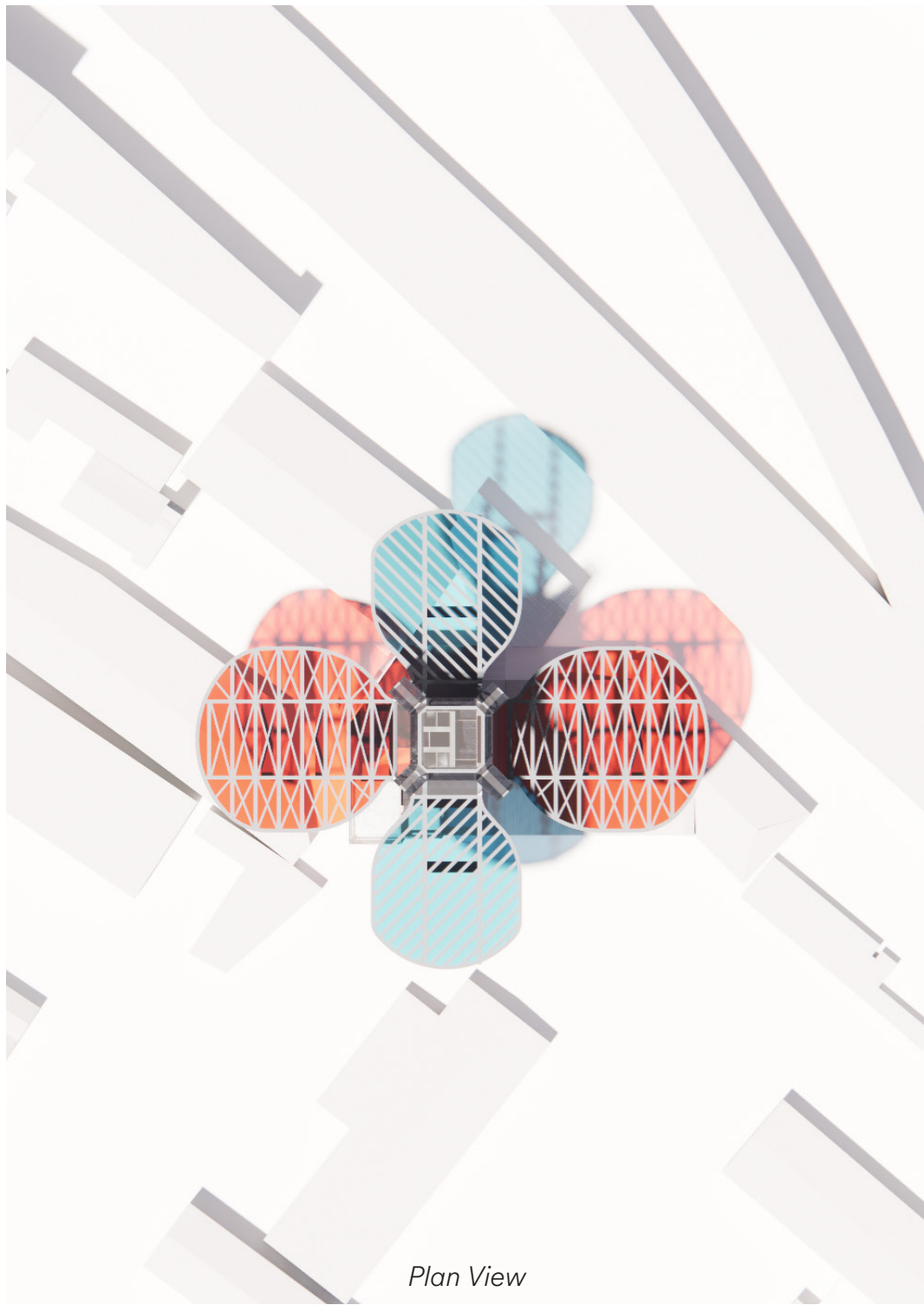
Viewing Deck



Aerial View



Street View



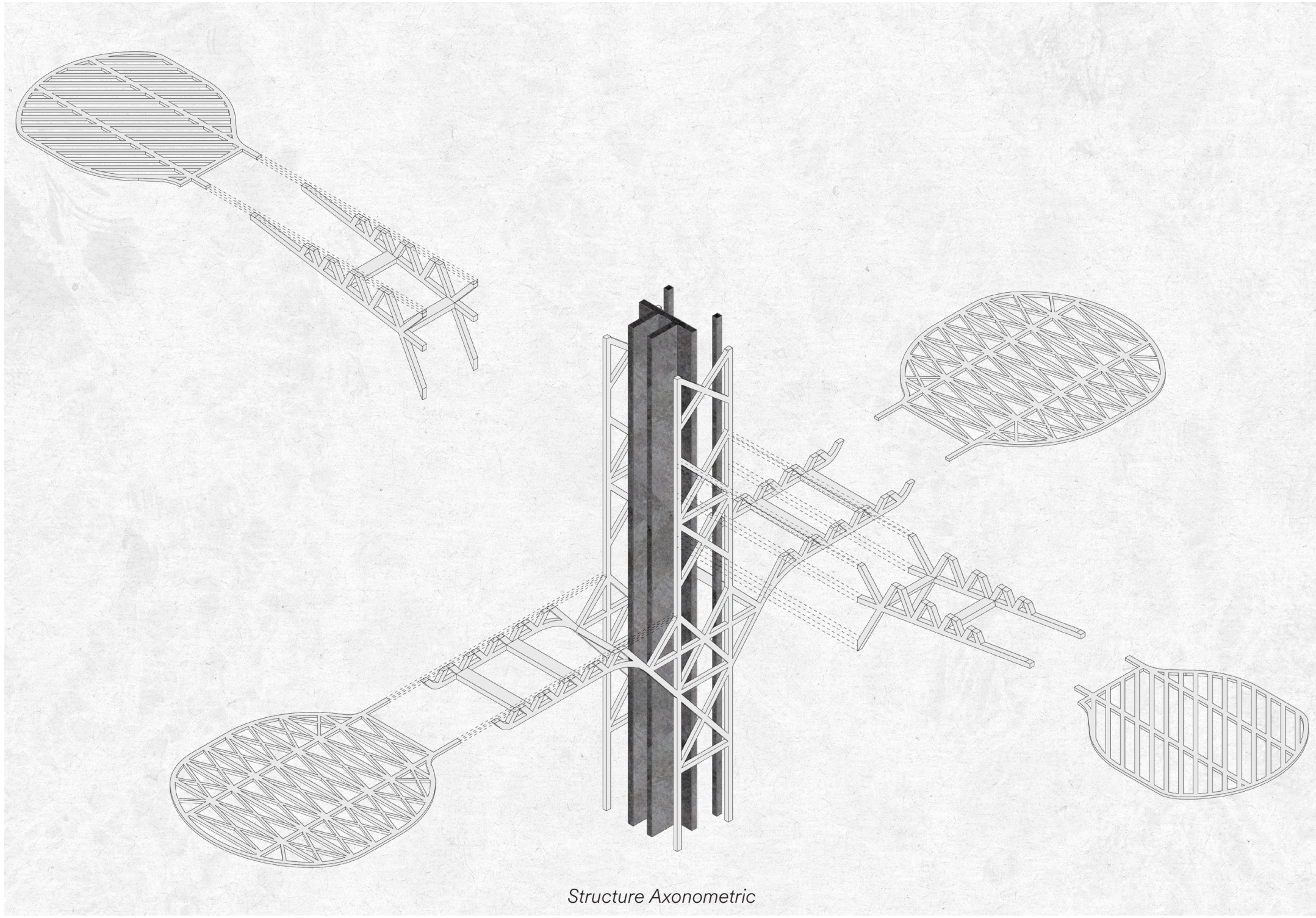
Plan View



Plan View



Aerial View



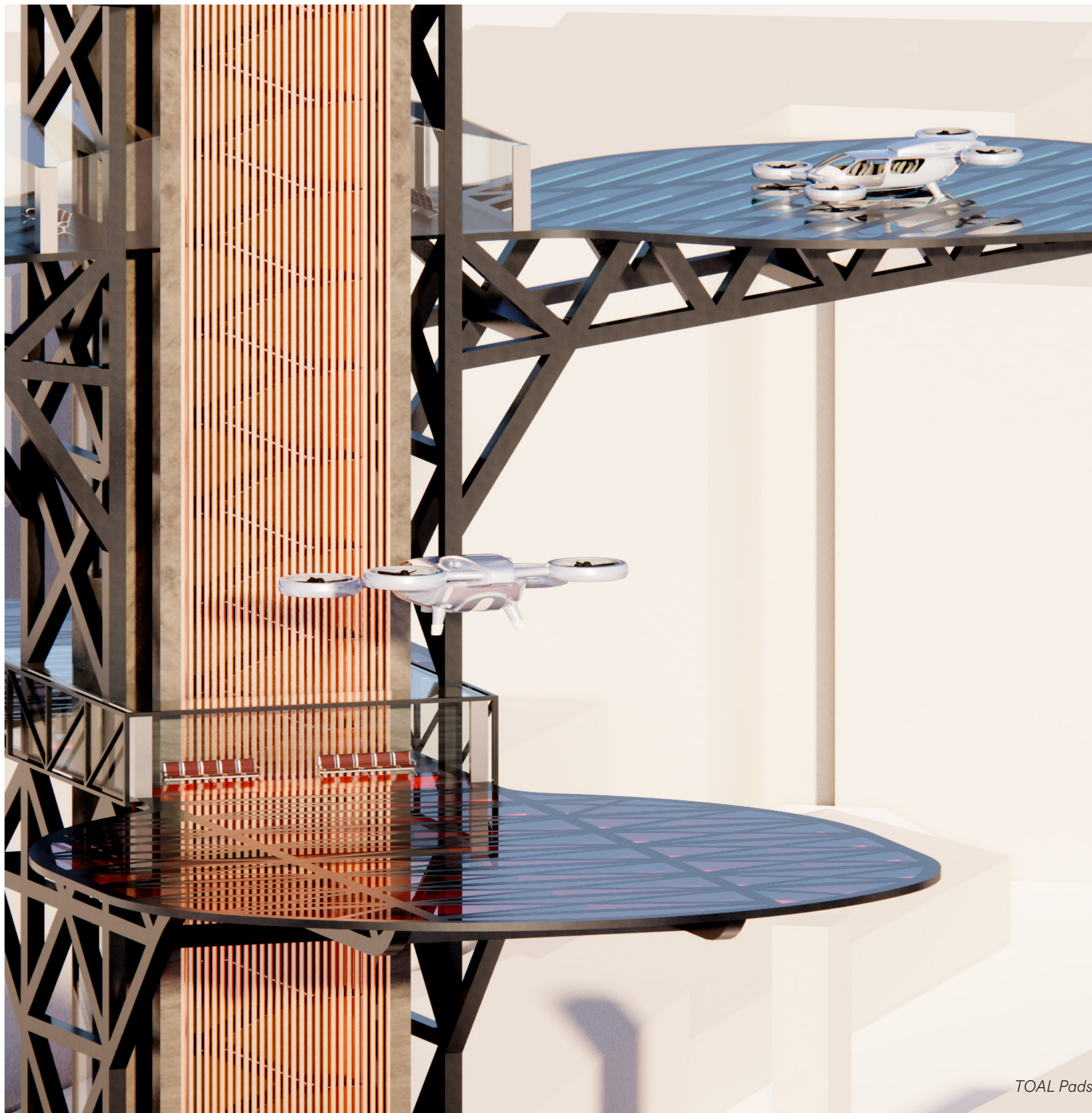
Structure Axonometric



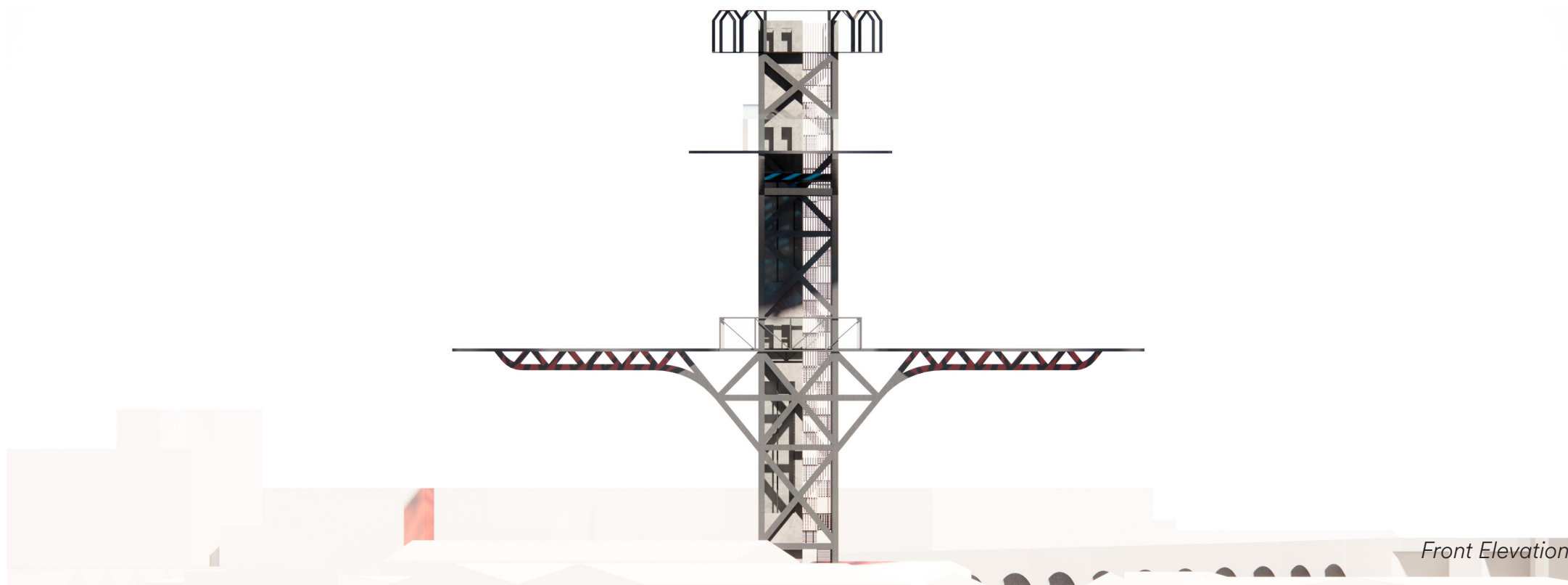
TOAL {Take-Off And Landing} View



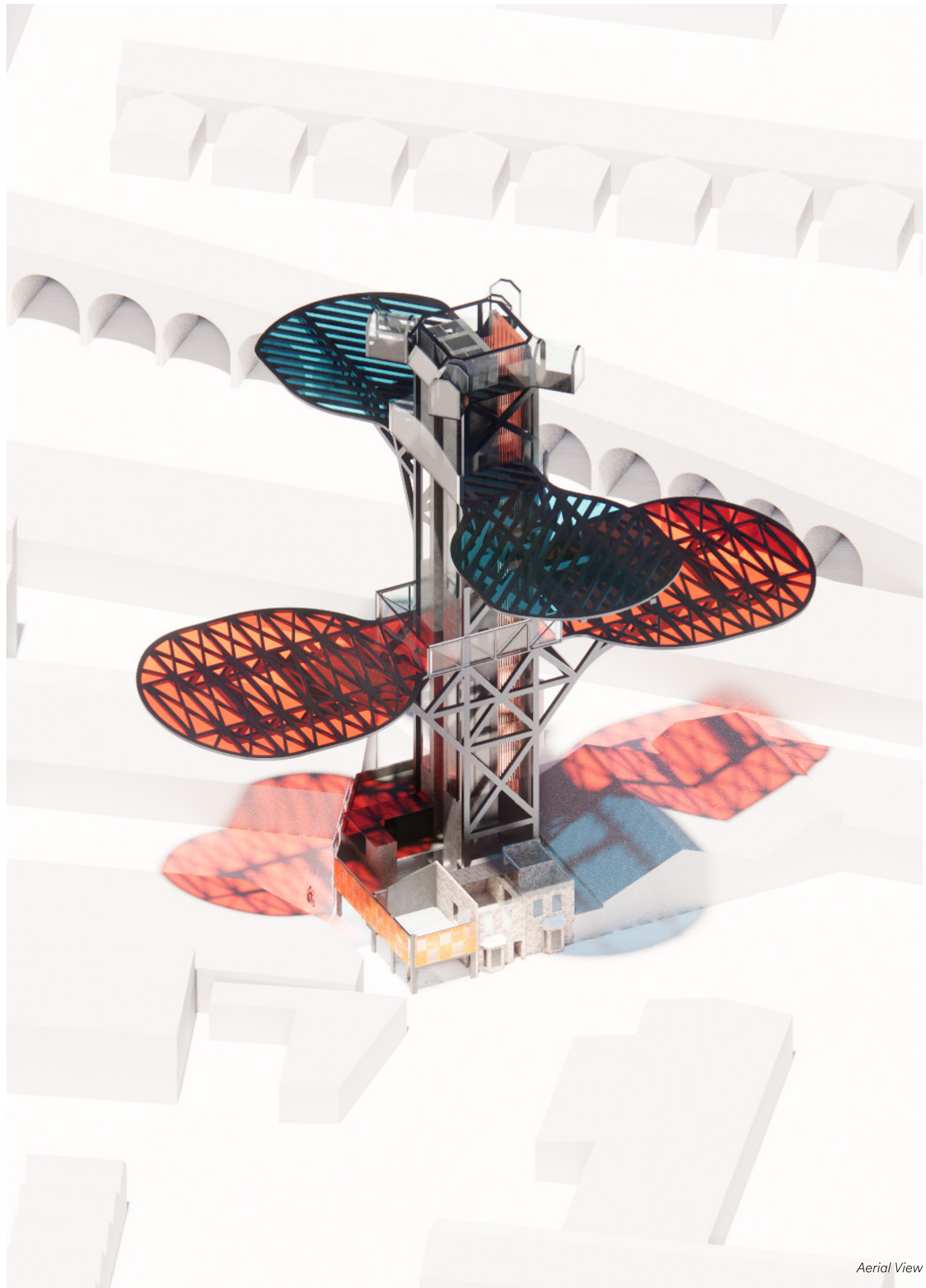
Viewing Deck



TOAL Pads



Front Elevation



Aerial View