

SMART SPACE

| Seoyeoun Min

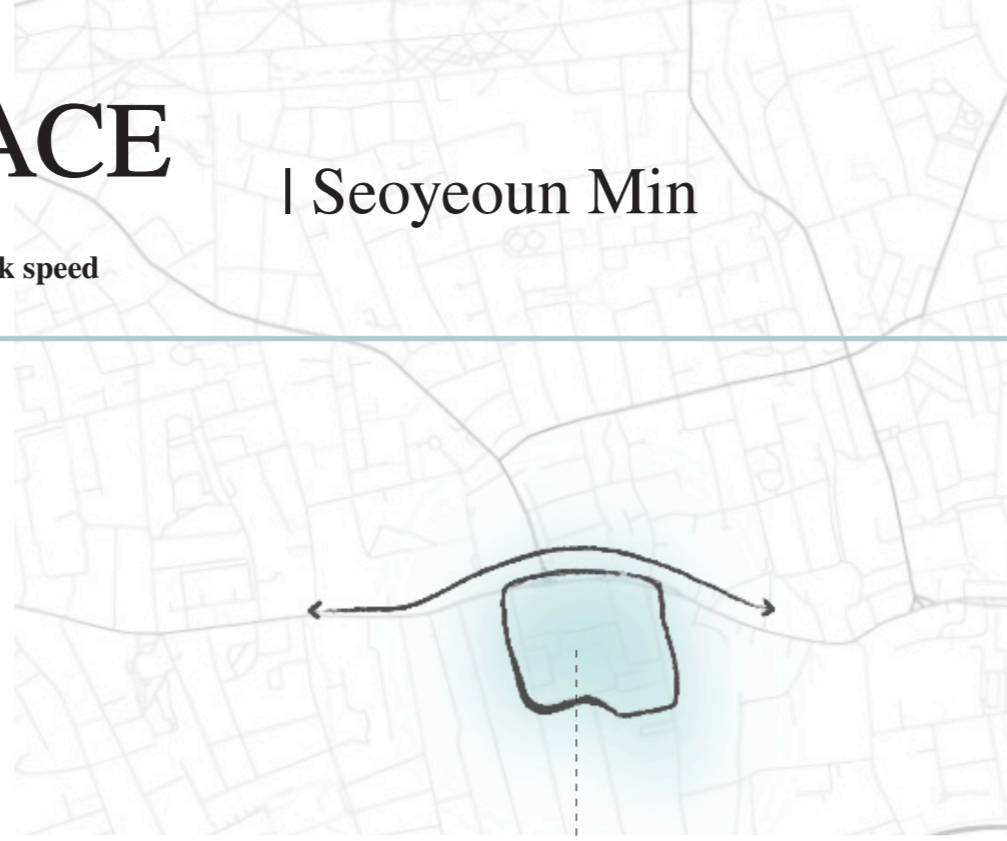
Flexible workspace for every work speed

Project aim:

The aim of this project is to transform Kennedy's Sausage Factory into a dynamic communal workspace. The vision is to create a versatile, multi-functional space that encourages community participation, fosters collaboration, and caters to the diverse needs of the Peckham community. This transformation will honor the site's historical significance while contributing to the area's modern, vibrant identity.

Location Background:

Kennedy's Sausage Factory in Peckham, London, founded in the early 20th century, was renowned for its high-quality sausages and traditional production methods, playing a significant role in the local economy and community life. Although it closed in the early 2000s due to changing consumer habits and competition, it remains a nostalgic symbol of traditional London butchery. Peckham has since evolved into a trendy and vibrant area, with regeneration projects like Peckham Levels and the Copeland Park & Bussey Building contributing to its dynamic identity. Establishing a new workspace and community center in Peckham will enhance its reputation, fostering creativity and strengthening community bonds.



TARGET PEOPLE:

For ALL people - Including all classes and all ages

TOURISTS

: To attract people for rest or offering any retail or events to enjoy the local culture.

LOCAL COMMUNITY

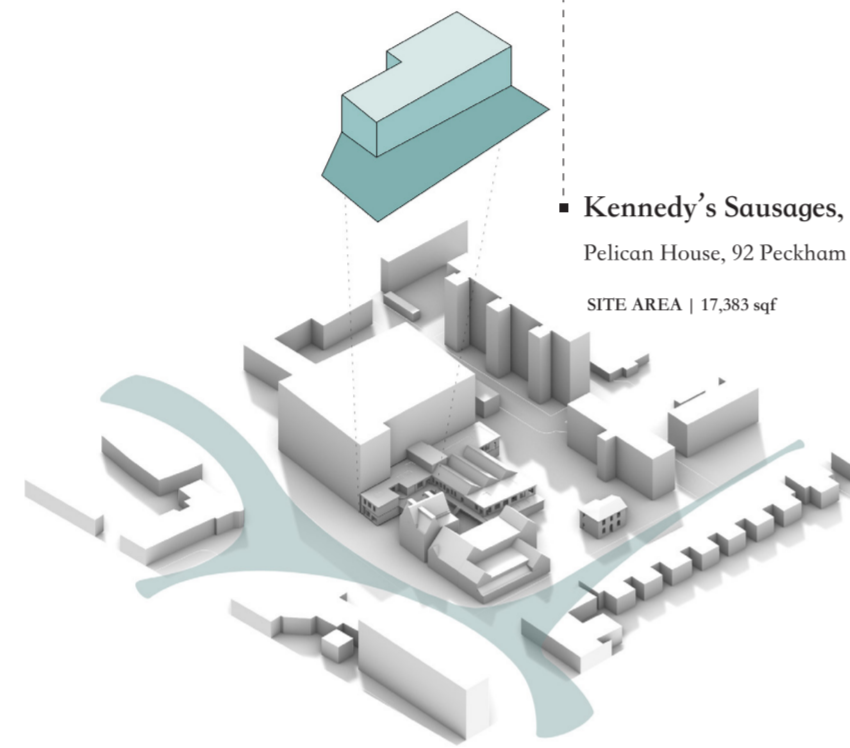
: Local people can easily approach to this space for multi-purposes.

STUDENTS

: For individual studies or meeting purpose for group projects.

PROFESSIONALS

: Professional may have a business meetings or organize a event or exhibition.



Kennedy's Sausages, London

Pelican House, 92 Peckham Rd, SE15 5PY

SITE AREA | 17,383 sqf

Key words representing current site

unexposed
disconnecting
underutilized boring
security
unformatted
undervalued



KENNEDY'S SAUSAGES



SOUTH LONDON GALLERY

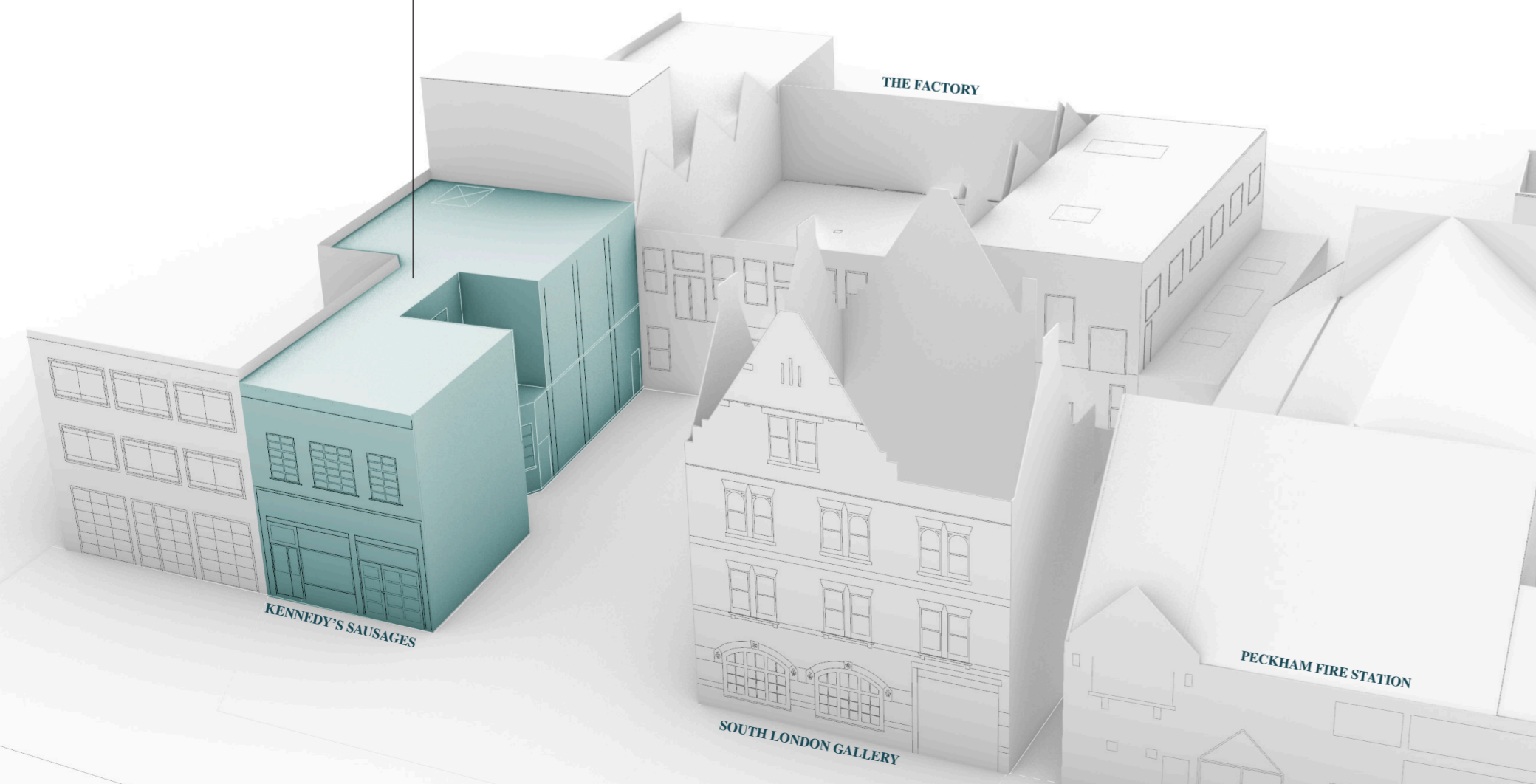


PECKHAM FIRE STATION



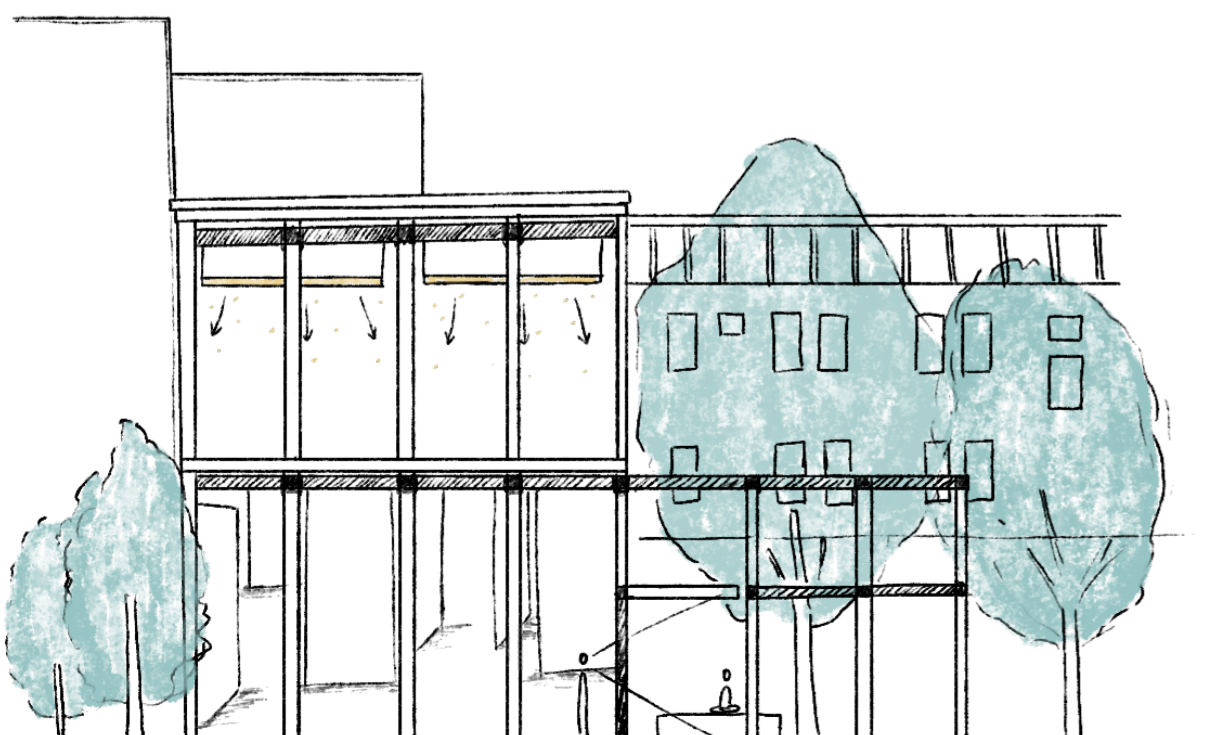
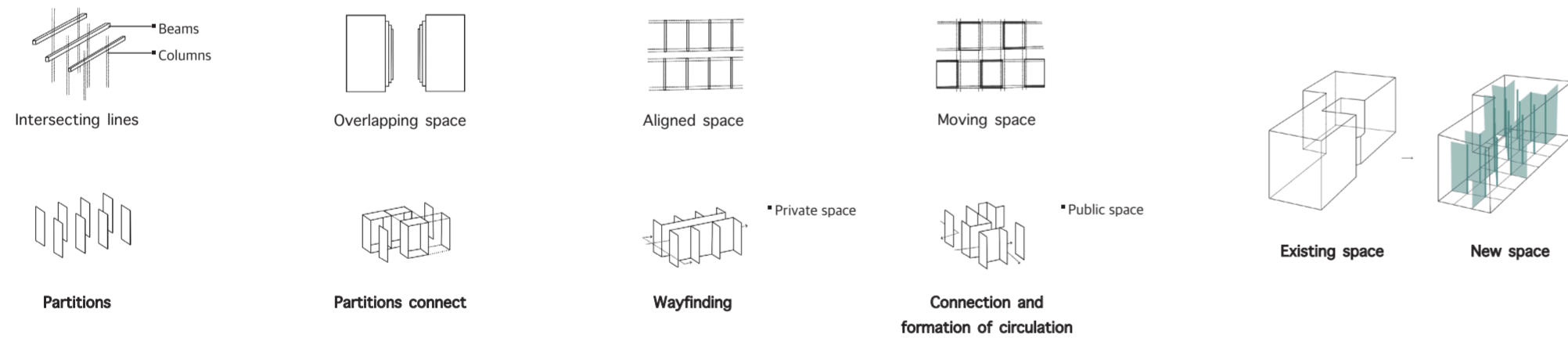
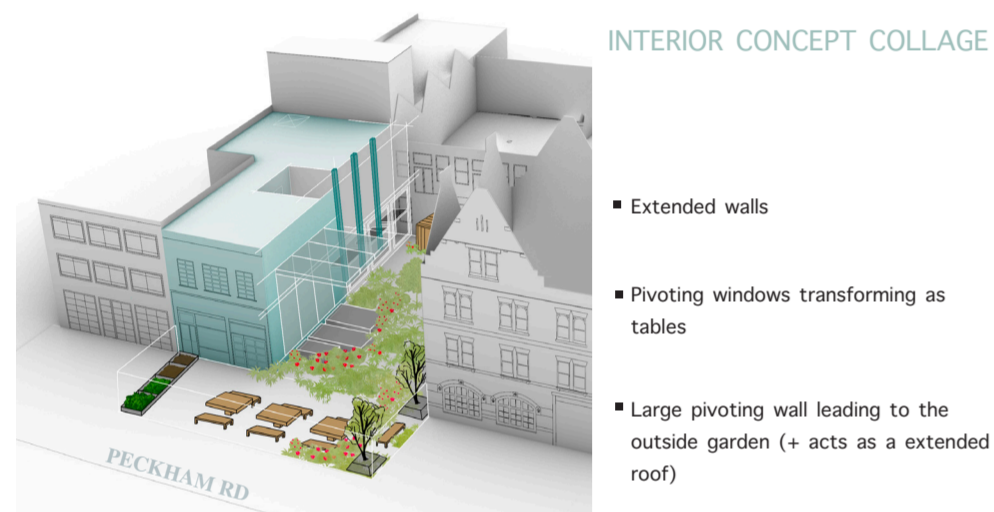
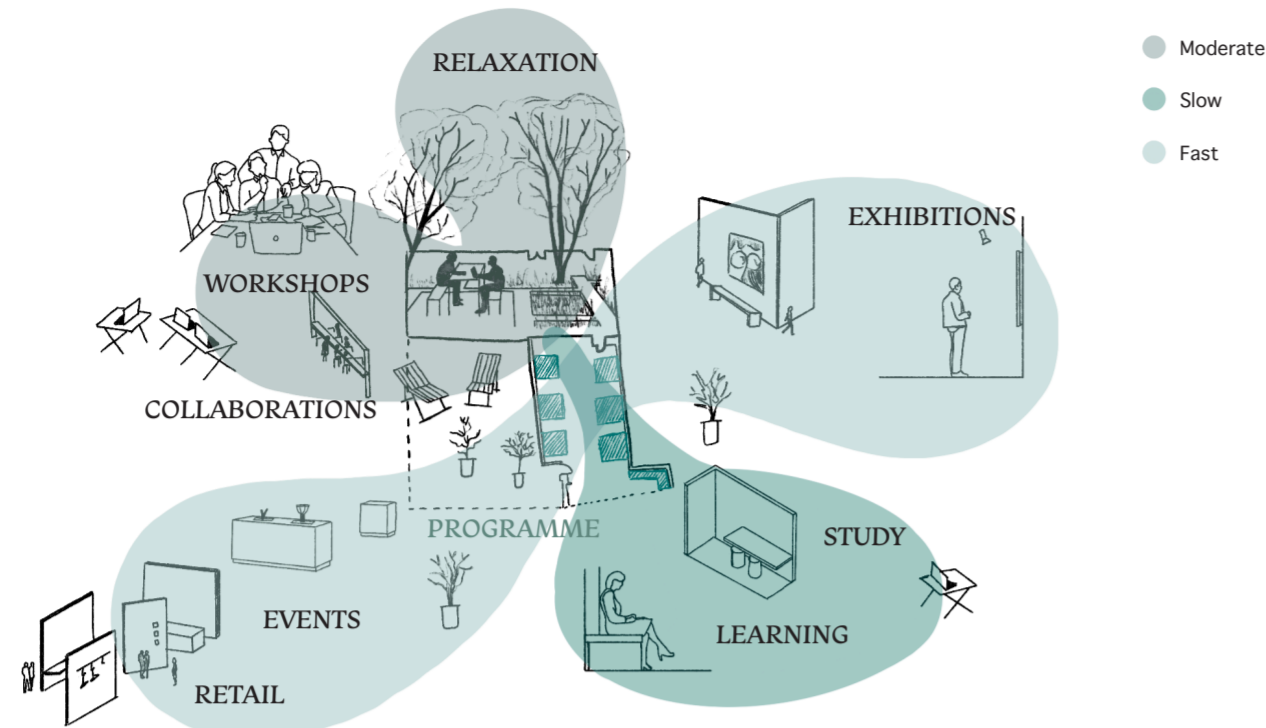
THE FACTORY

CHOSEN SITE



community
learning
belonging
cultural
identity
valued
new
activity

restore
security
multipurpose
engaging
materials



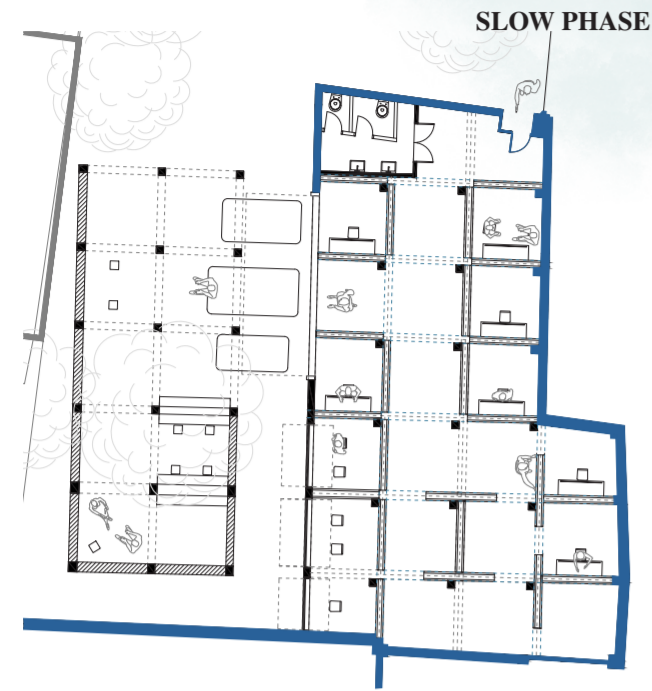
► **Grid in space**

It forms a new space by overlapping and connecting. The continuous grid design extends to the exterior, aiming to improve airflow throughout the space and foster greater connectivity between its different areas. This design not only enhances the aesthetic appeal but also promotes a more efficient circulation of air and people. The integration of indoor and outdoor elements creates a harmonious environment that encourages interaction and movement. By blending these areas seamlessly, the space becomes more dynamic and adaptable to various functions and activities.

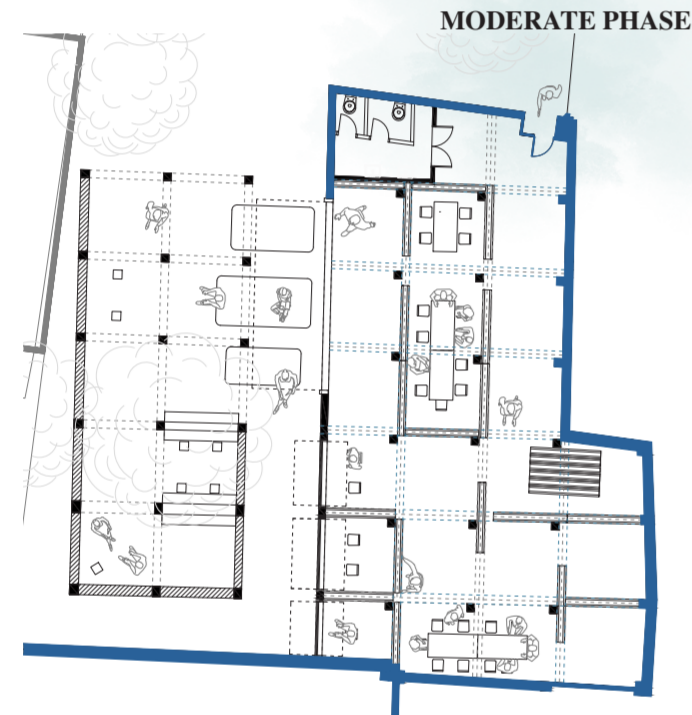


SPATIAL ARRANGEMENT FOR DIFFERENT WORKSPEED

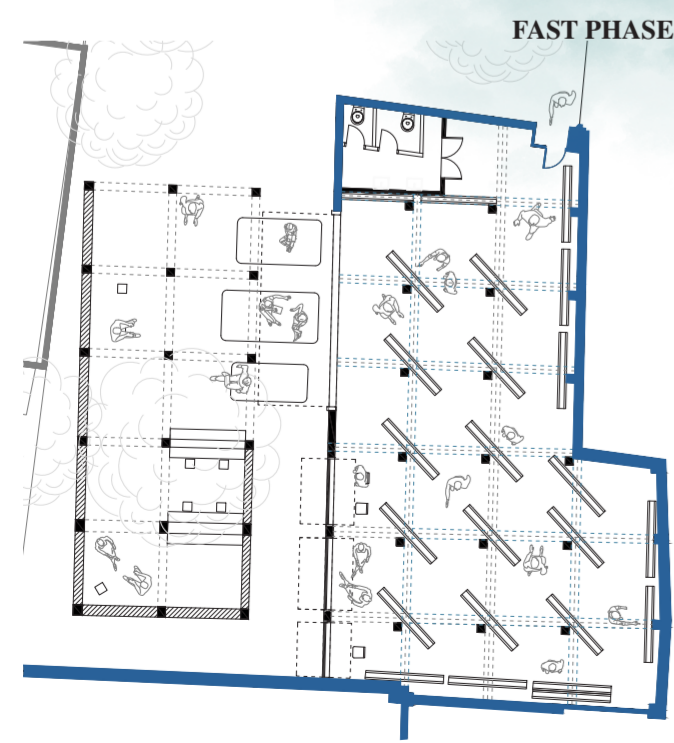
- Existing building structure
- Proposed building structure



Slow Phase: Partitions aligned to organize the space, leading viewers in a specific paths.



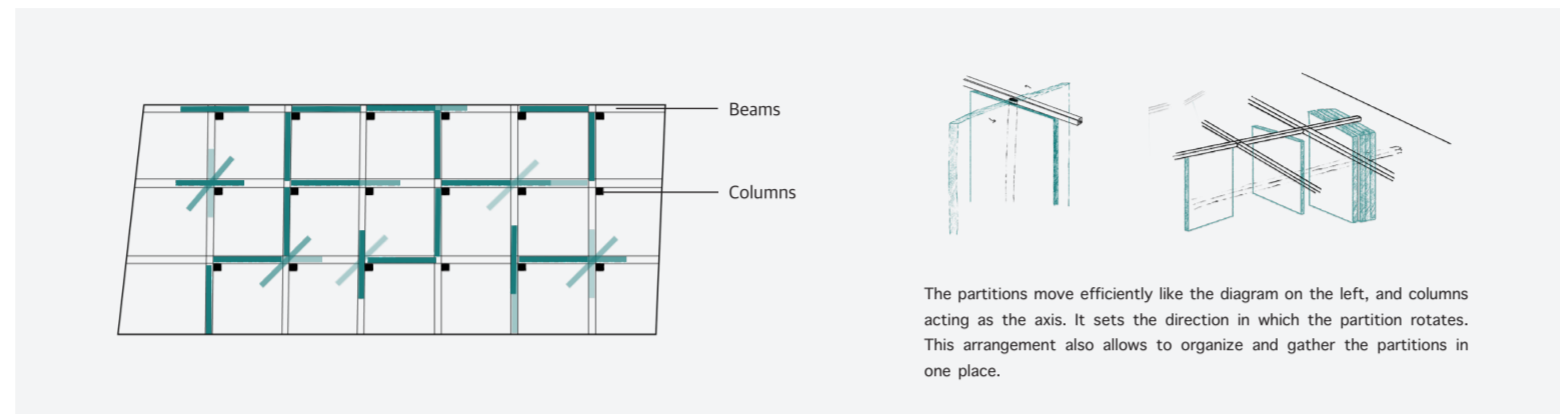
Moderate Phase: Random partitions creating less organized but free to explore space.



Fast Phase: Partitions closed creating private spaces and restricting movements.

Expanding versatility in workspace design

The range of utilized space gradually expands as the panels open wider, extending the boundary of the public area. My goal was to design a versatile workspace where users can choose their preferred work zones based on their needs. This setup offers a variety of options, including open collaborative spaces, quiet areas, standing desks, and comfortable outdoor seating to foster relaxation and stimulate creativity.



The partitions move efficiently like the diagram on the left, and columns acting as the axis. It sets the direction in which the partition rotates. This arrangement also allows to organize and gather the partitions in one place.

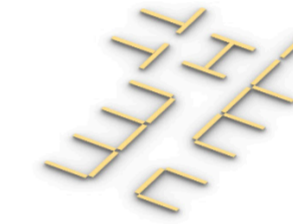
USER EXPERIENCE



INSTRUCTION FOR USING 'SMART SPACE'

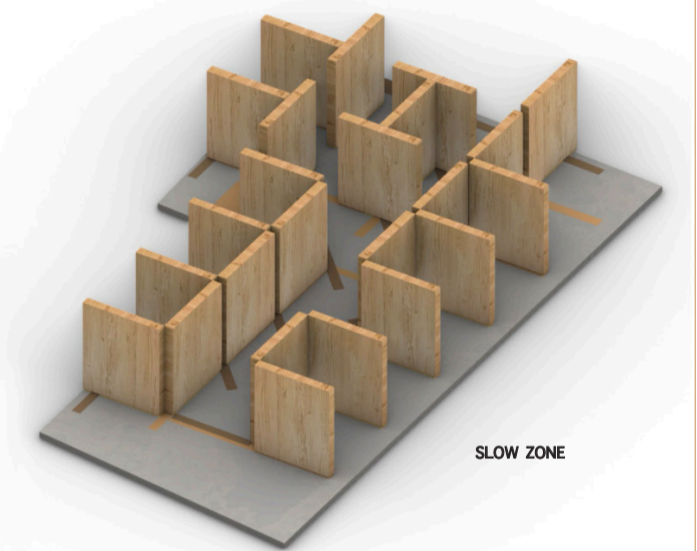
GUIDE TO USING *SMART SPACE*

WELCOME TO OUR SMART SPACE!
EXPLORE HOW OUR ADAPTABLE PANELS CREATE DIVERSE WORKSPACES TAILORED TO YOUR NEEDS.

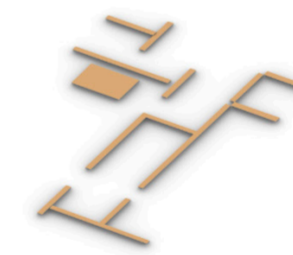


Follow the **Beige Tape** for, **Independent Study**

Features private study pods with uninterrupted concentration.

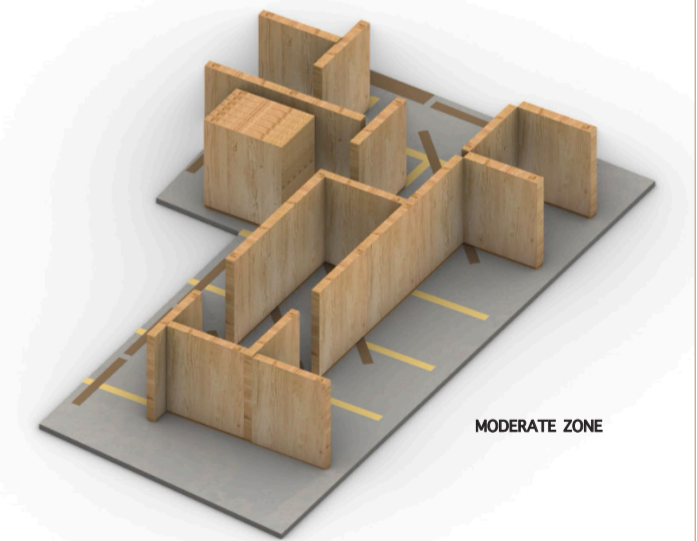


SLOW ZONE

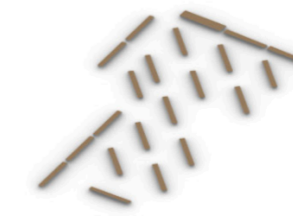


Follow the **Brown Tape** for, **Group meetings or Workshops**

Features flexible furniture arrangements to accommodate different group sizes.

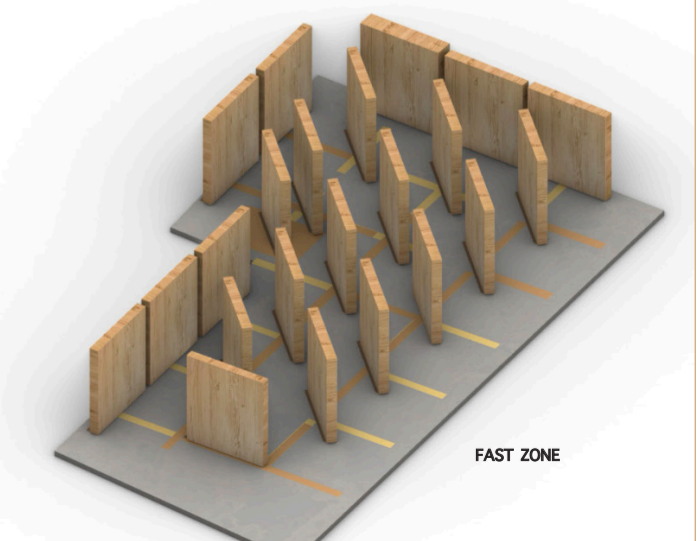


MODERATE ZONE



Follow the **Dark Brown Tape** for, **Events or Exhibition**

Features modular displays and movable panels for customizable layouts.

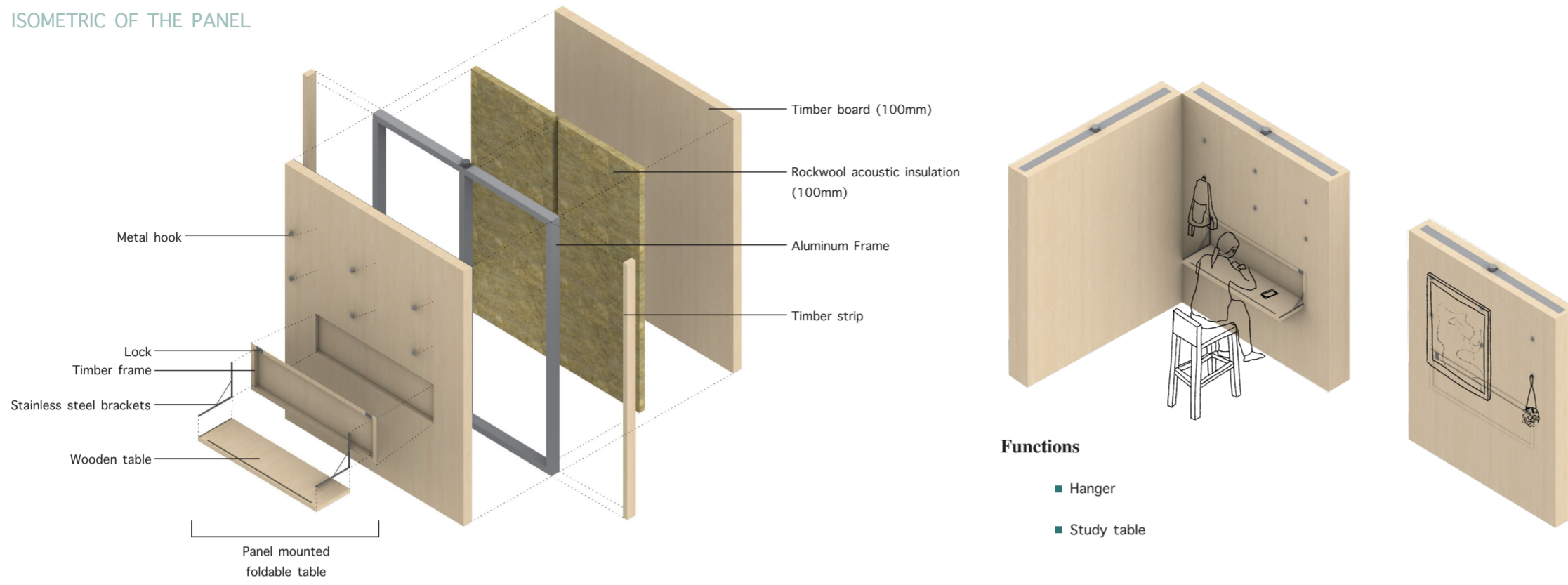


FAST ZONE

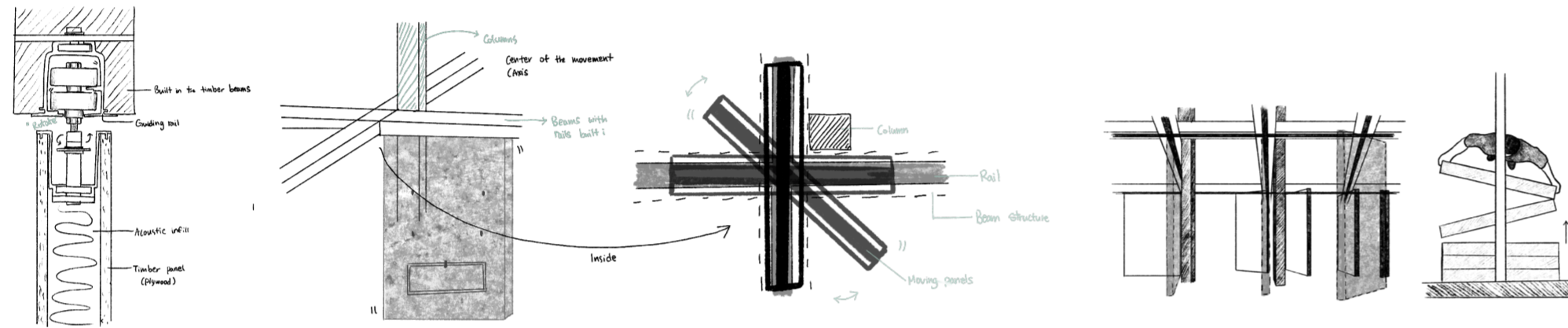
*Although the placement of the panels is recommended, please feel free to create your own workspace!

SYSTEM IN SPACE

ISOMETRIC OF THE PANEL



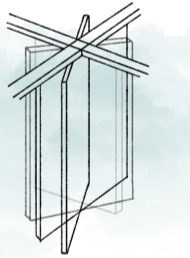
WAY PANELS MOVE



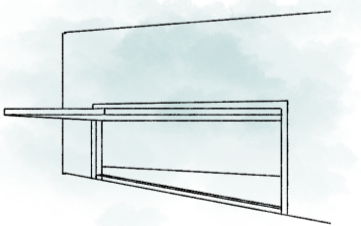
ELEVATION AA



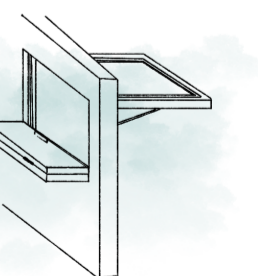
SYSTEM 1 Pivoting Panels



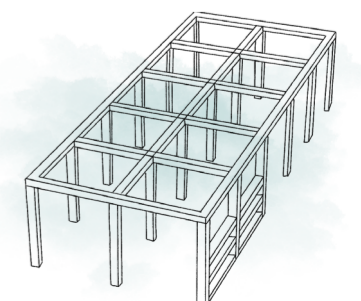
SYSTEM 2 Overhead Window



SYSTEM 3 Window X Table

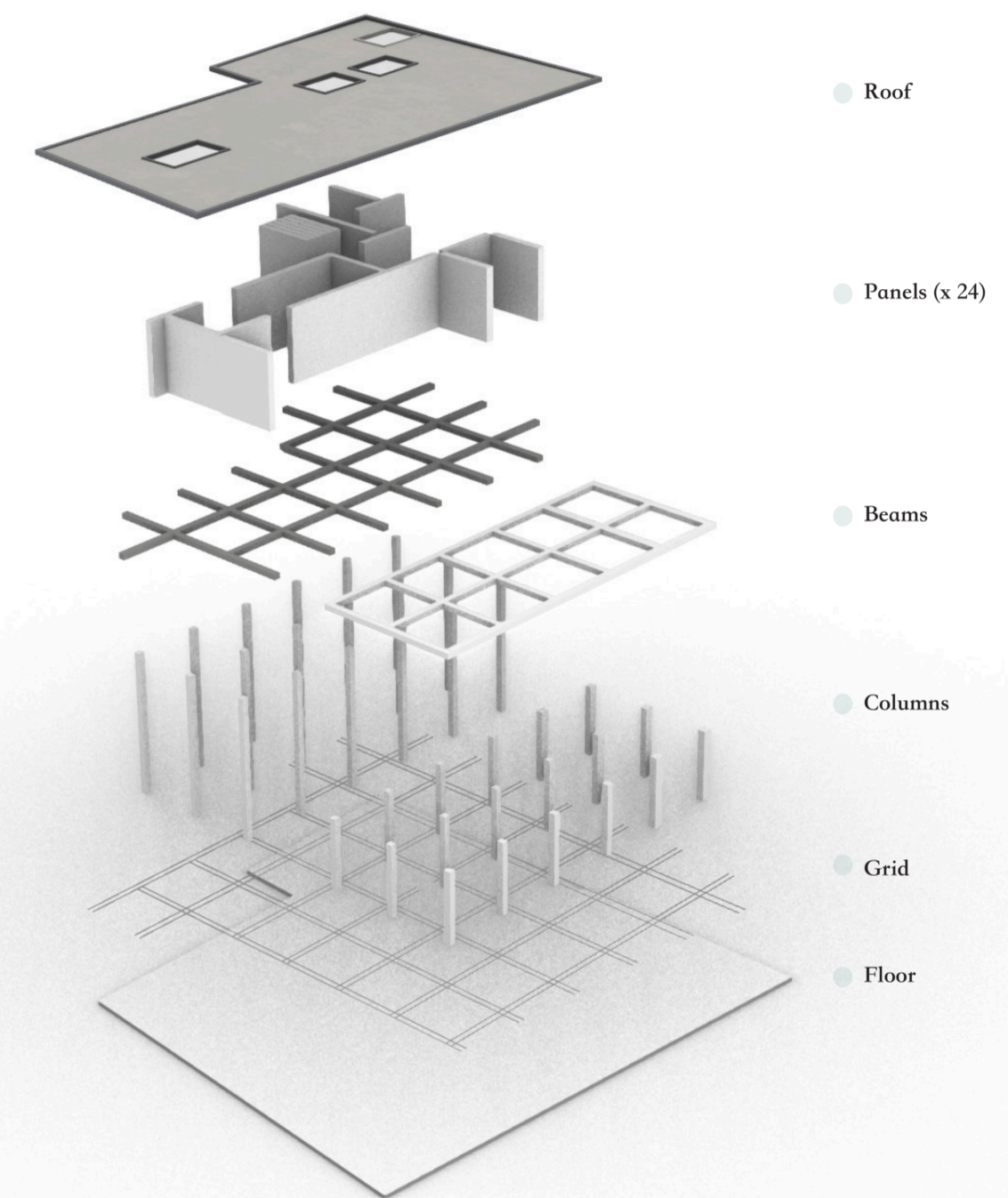


SYSTEM 4 Garden Installation





DESIGN LAYERS



MODERATE WORKING SPEED SPATIAL ARRANGEMENT SECTION



FINAL OUTCOME