

The Playground of Senses

The Playground of Senses

The aim of our project is to create a space in which children can explore their different senses. Our structures encourage them to interact with the nature in their surroundings, specifically looking at a tree as a way to learn about caring for our environment and connecting to it; Through the sense the structures open up conversations about sustainability and outdoor learning. The structures, therefore, become the tools that help them learn about what surrounds them daily when going out into the world. We created four structures, where each focuses on different aspects of the tree we chose to work around.

We worked with children from the local Crawford primary school through two workshops that helped us design and test our structure. The children used their bodies to discover different textures, sounds and sights. From reaching leaves with a seesaw to tracing the barks and roots of trees, the children are also reminded of their five senses with which they do everyday tasks and appreciate nature with.

Partner + Site research

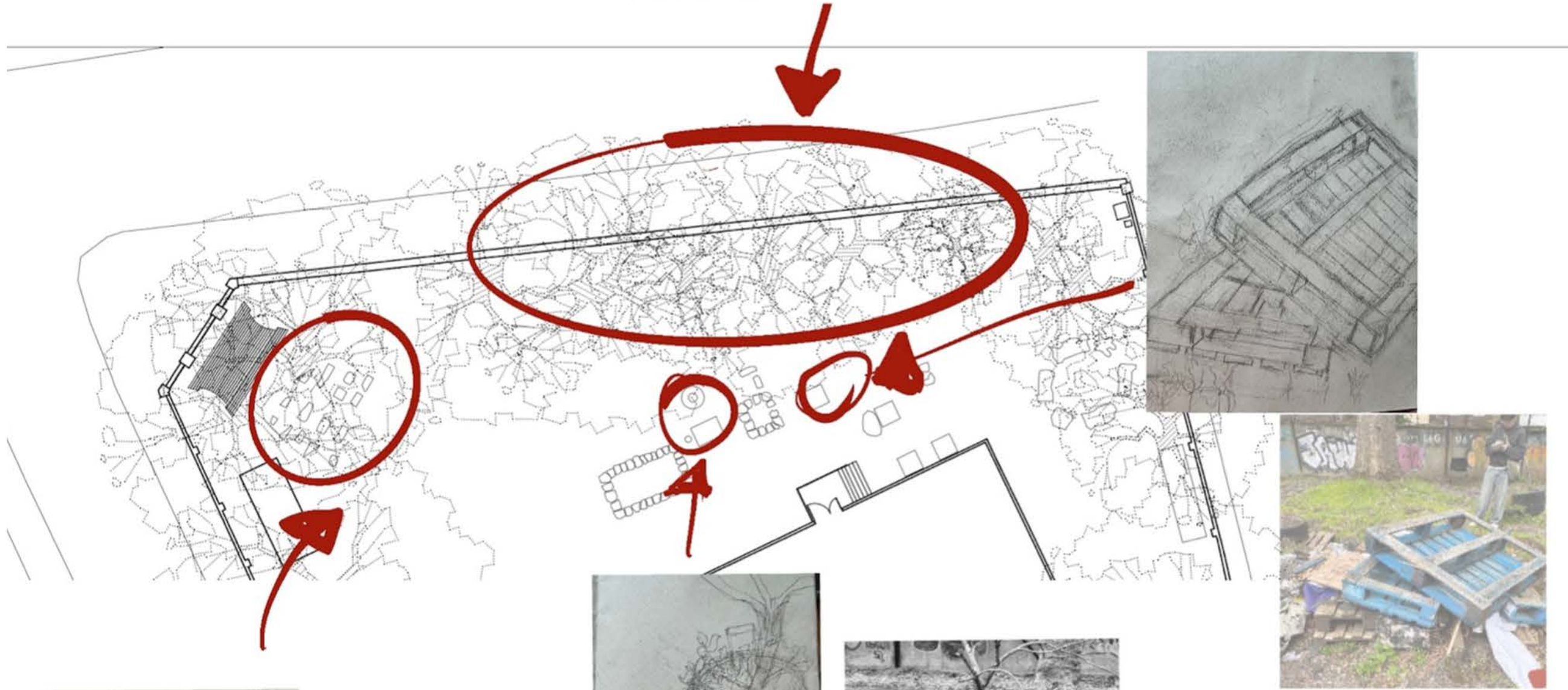
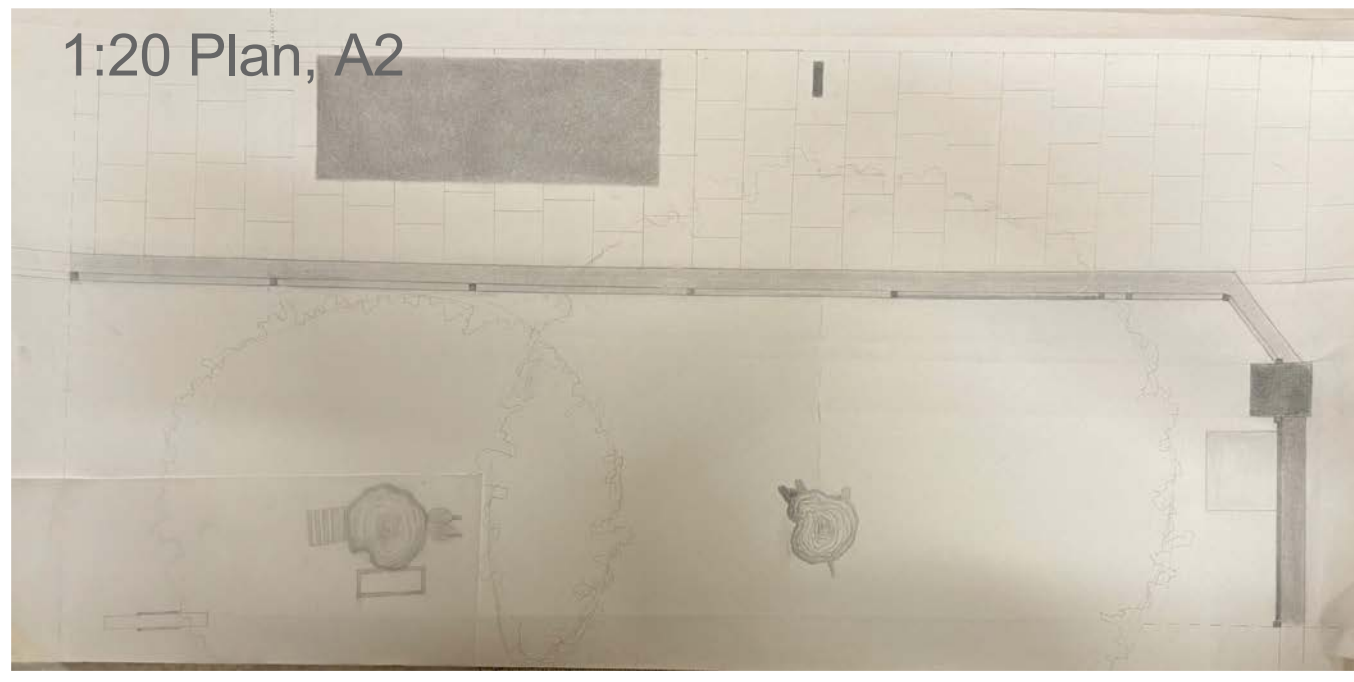
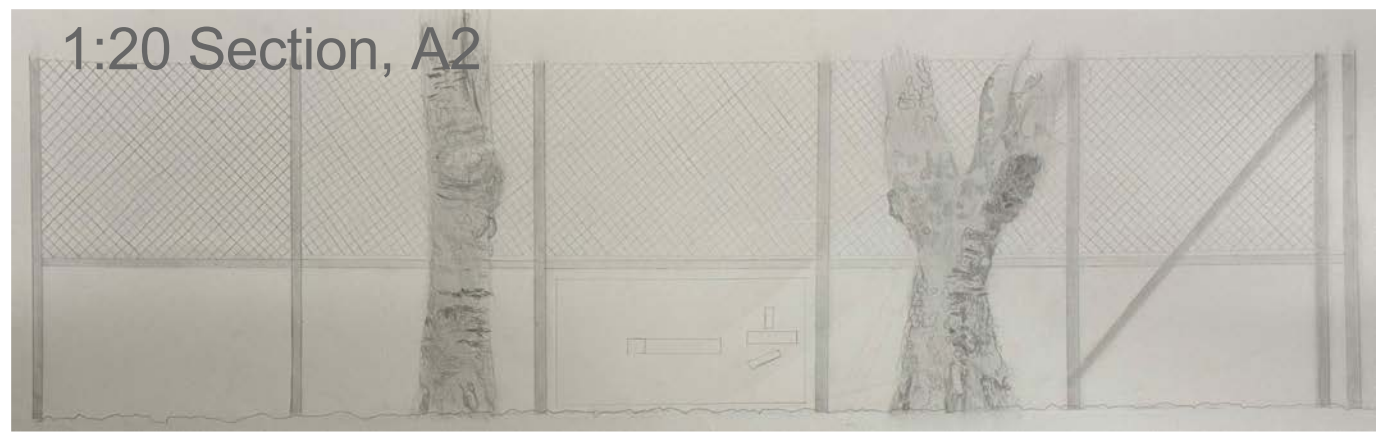
Our clients are the local primary school, where we aim to design a learning space from their inspiration, while observing the clients, our group noticed challenges with focus, noticing fidgeting and restlessness



Cycle of production



Sketches of different textures around the site



Crab of our chosen site





Legs cut at an angle
→ easy leaning



Adjustable legs through screw and bolt



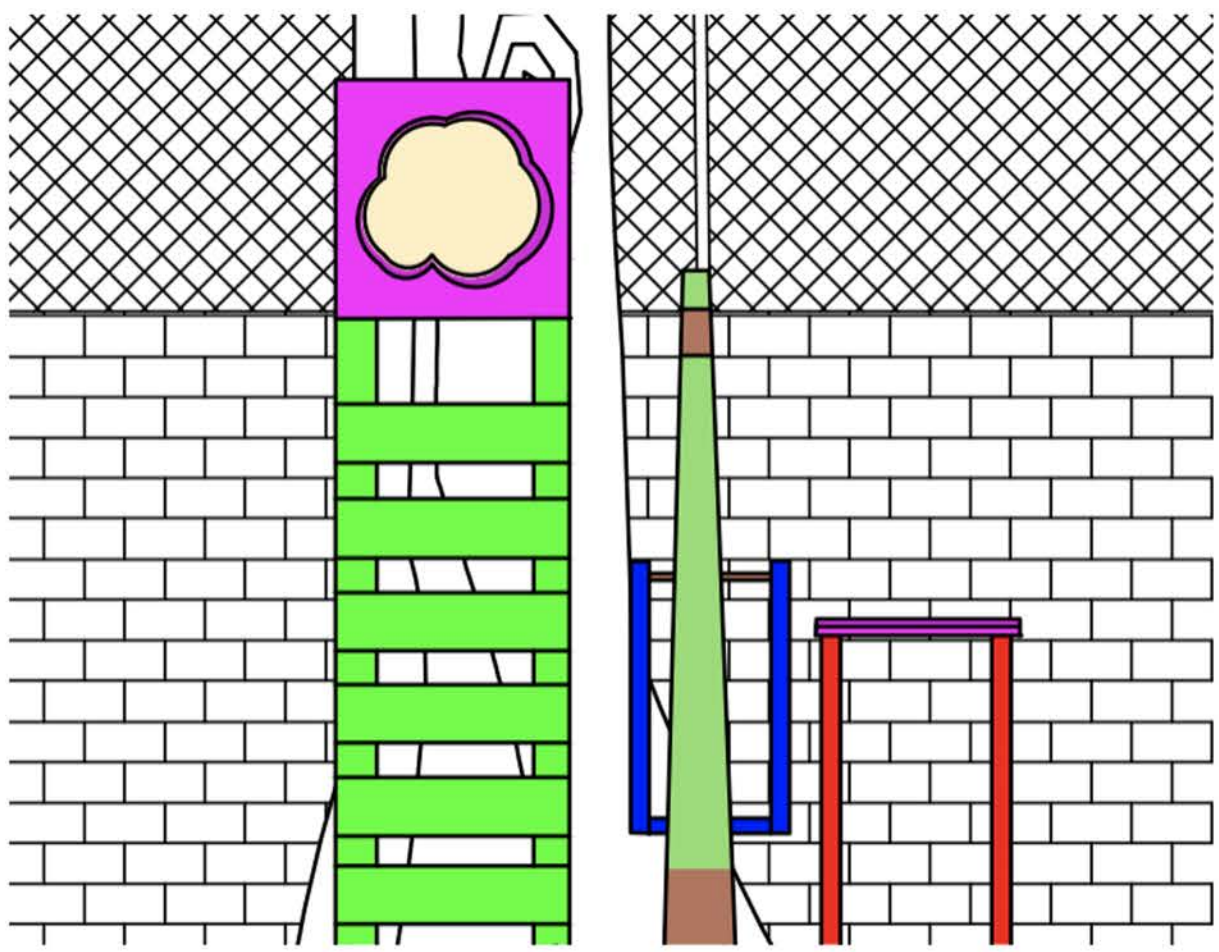
Hidden blade



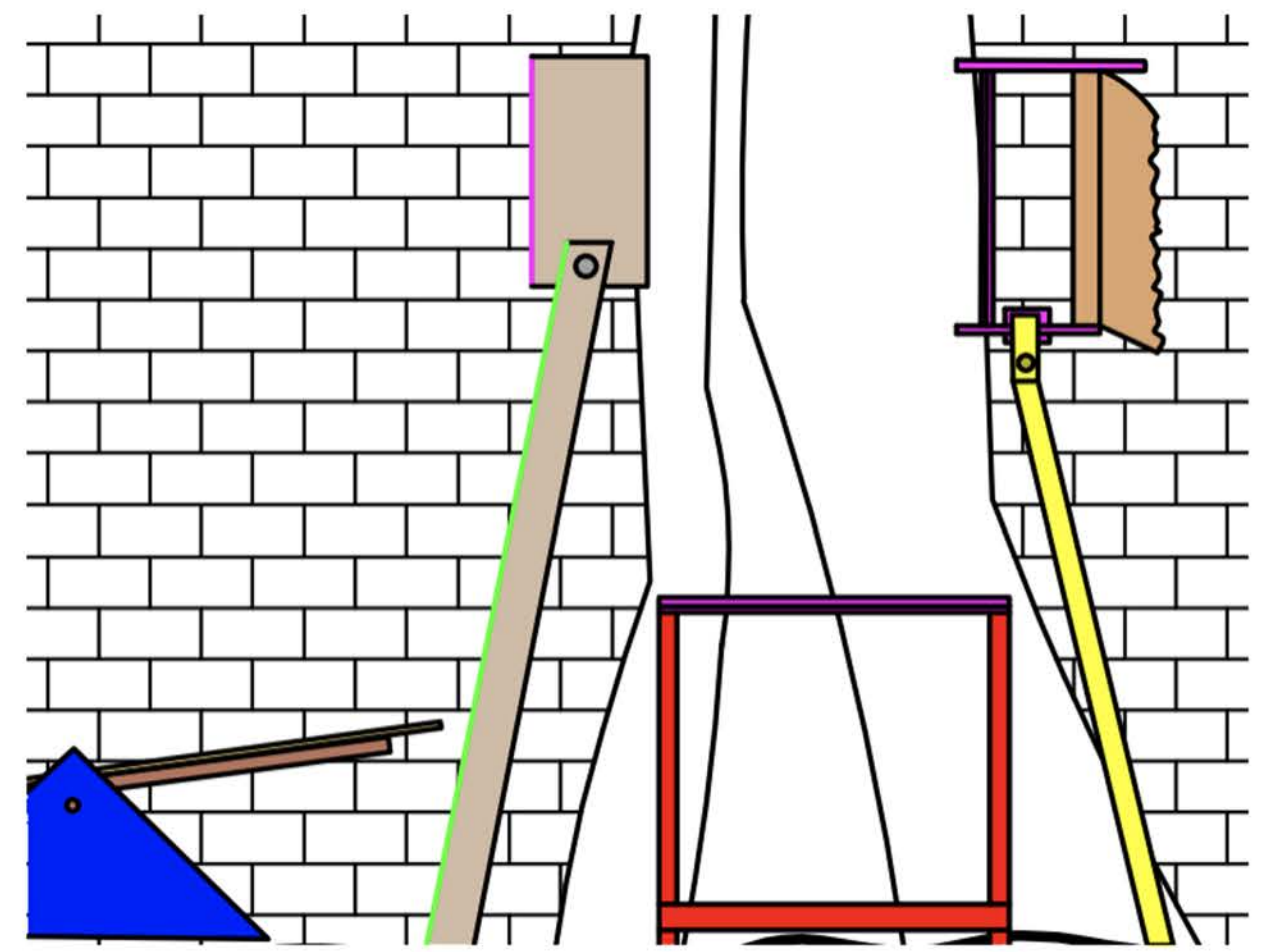
Adjustable legs through screw and bolt



Our proposal is designed to educate the children about the benefits of tree and the environment through a interactive tasks, The proposal contains four parts each part will stimulate senses. The many different textures highlights the idea of physical Learning through texture which helps to strengthens a child's motor skills.



section 1:20

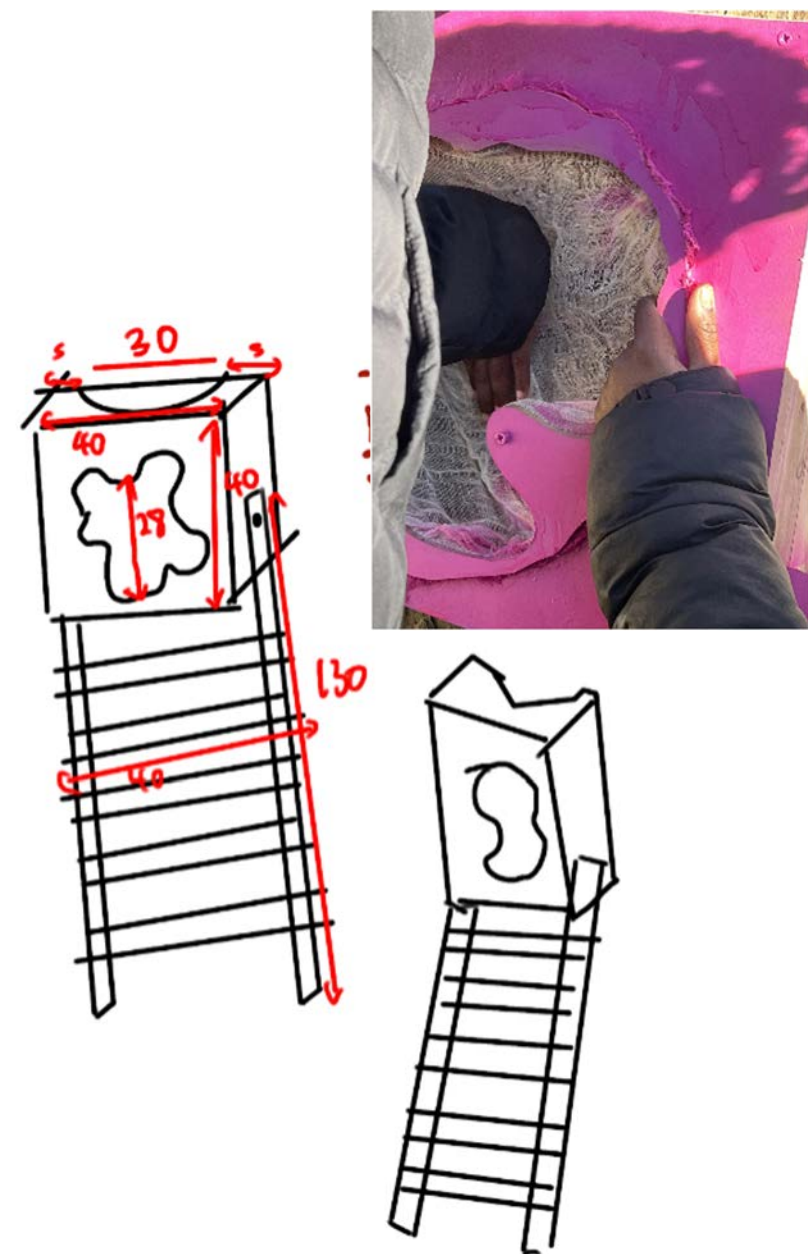


elevation 1:20



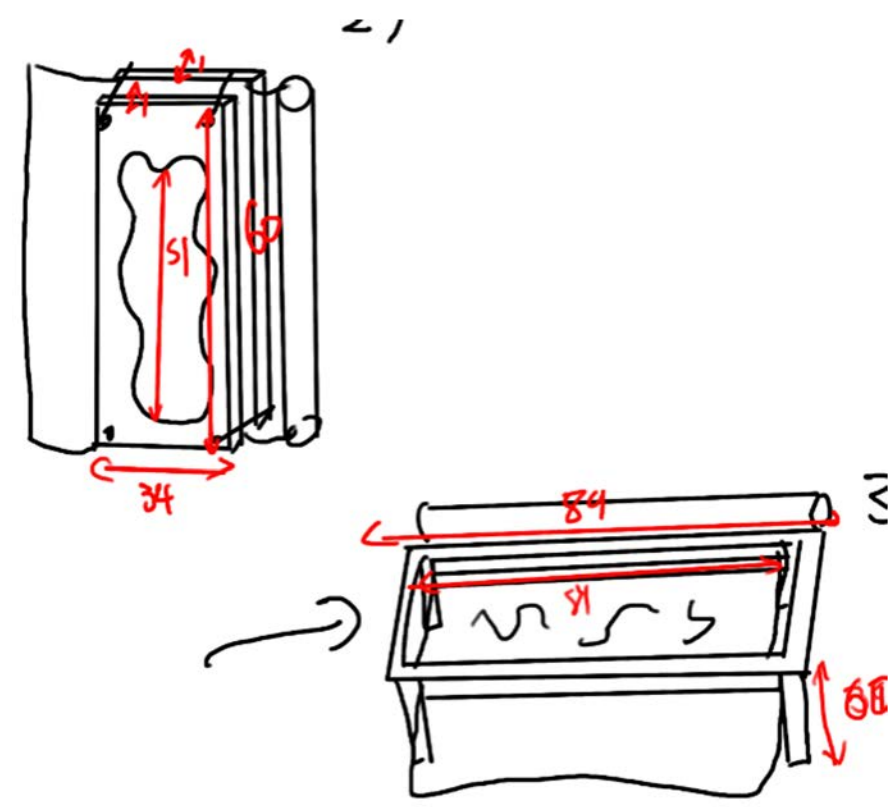
The Blind box

Focuses on the sense of touch by restricting other senses. Features a fabric-covered opening that can be adjusted to the specific height of the desired area. This allows the children to concentrate on the tree's texture, making the experience more memorable than simply viewing a picture.



The Tracing Table

Allows our partners to focus on their sense of sight. This portable table with tracing paper invites the children to draw what they see through the paper or put objects on top and draw around it.

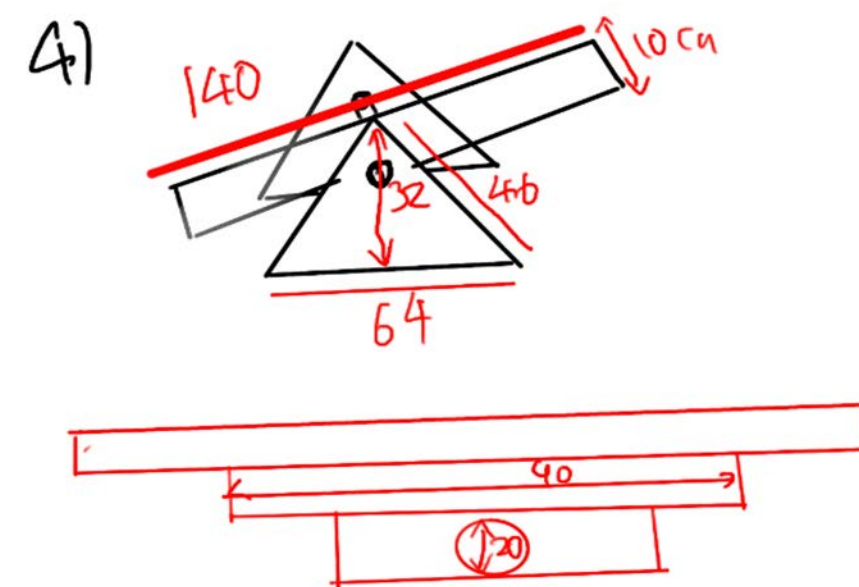


Function



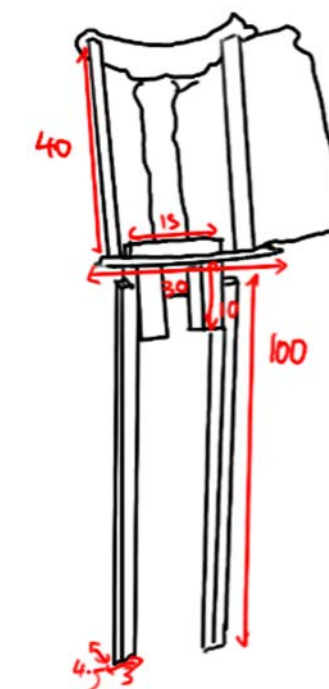
The Seesaw

Invites children to help each other reach the leaves on the lower branches of the tree to observe its details. The structure focuses on skill of problem solving, The children must be able to work together to be able to reach the target, this builds teamwork which is an essential element of success in future



The Rubbings Scroll

Allows the children to create their own textures through our portable paper scroll. This consists of adjustable legs with a roll of tracing paper, safe and hidden cutting blade to rip off paper if needed and a pencil pot. This way the children can easily use this to collect different samples of new textures they discovered and learn about it.





Review day with clients

We decided to take a step back from our finished designs and allow the children to discover the space and make it their own. We wanted to see how the children would decide to use the space they were given. We watched as they interacted with nature with excitement, feeling the bark of the tree, drawing its roots, and admiring the leaves while going up and down the seesaw.