

# Collaborating to create sustainable art:

## *Leaf Collection and Weaving*

### *Partner Research:*



*Our first workshop with our partners: where we began to understand how they like to learn and play*

### Our brief and aims

Our project functions as a collaborative activity with our partners from Crawford Primary school. We aimed to spark their creativity as they worked alongside each other using found resources from our site. Through this practice our outcome encouraged the children to carry out sustainable learning while creating bonds along the way.

*After noticing the leaves that naturally collected around the site for our final design, we created a workbench and seating area that supported the children to create intricate leaf weavings. Alongside a step-by-step guide that allowed them to effectively create art in an outside setting.*

Sustainable practice was also built within the frames of our design as we upcycled materials found on site and in the local area. Which we found to reinforce our overall message within this project.

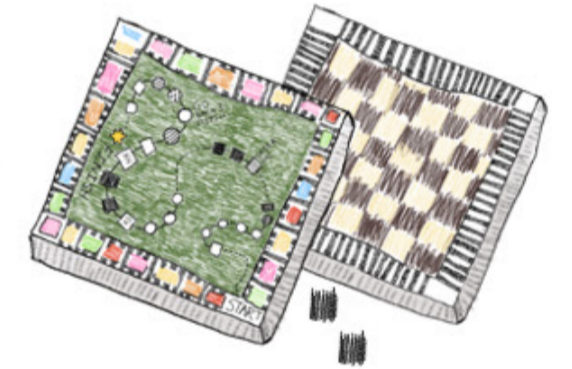
### Our partners



Name: Jay

learning encounter:  
playing games

Learning methodology:  
logical



Name: Joseph

Learning encounter:  
swimming

Learning methodology:  
physical



Name: Dana

Learning encounter:  
knitting

Learning methodology:  
physical

# Thematic mapping

After meeting our partners, we carried out a walk from our site to their school, plotting details that we found interesting. It also familiarised us with the area that we were designing our intervention.

Another theme within our maps was Leaf Fall. As we found ourselves drawn to the autumnal colours as they fell from the trees and got brushed onto the floor. We found the children were also more encouraged to participate with brightly coloured objects



Within this map you can see we were interested in Moving Objects. When we first met the children, we had previously noted how the children enjoyed being able to physically move and touch things.

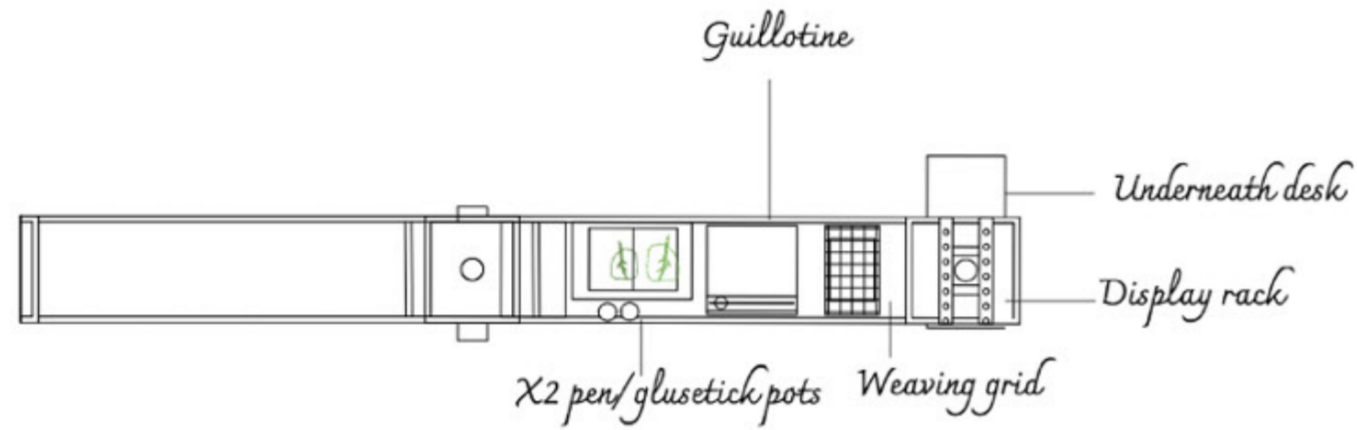
I started collecting different coloured leaves from val → to Crawford

A yellow leaf



# Design proposals

# Desk rotation



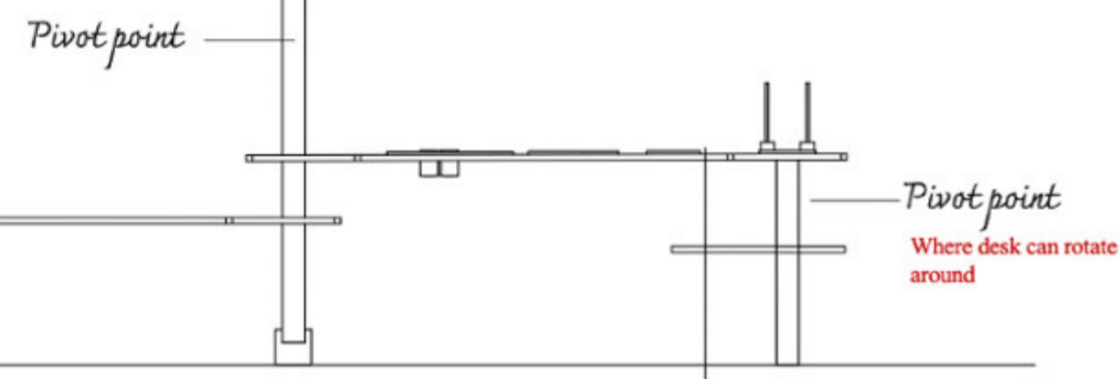
:20 model



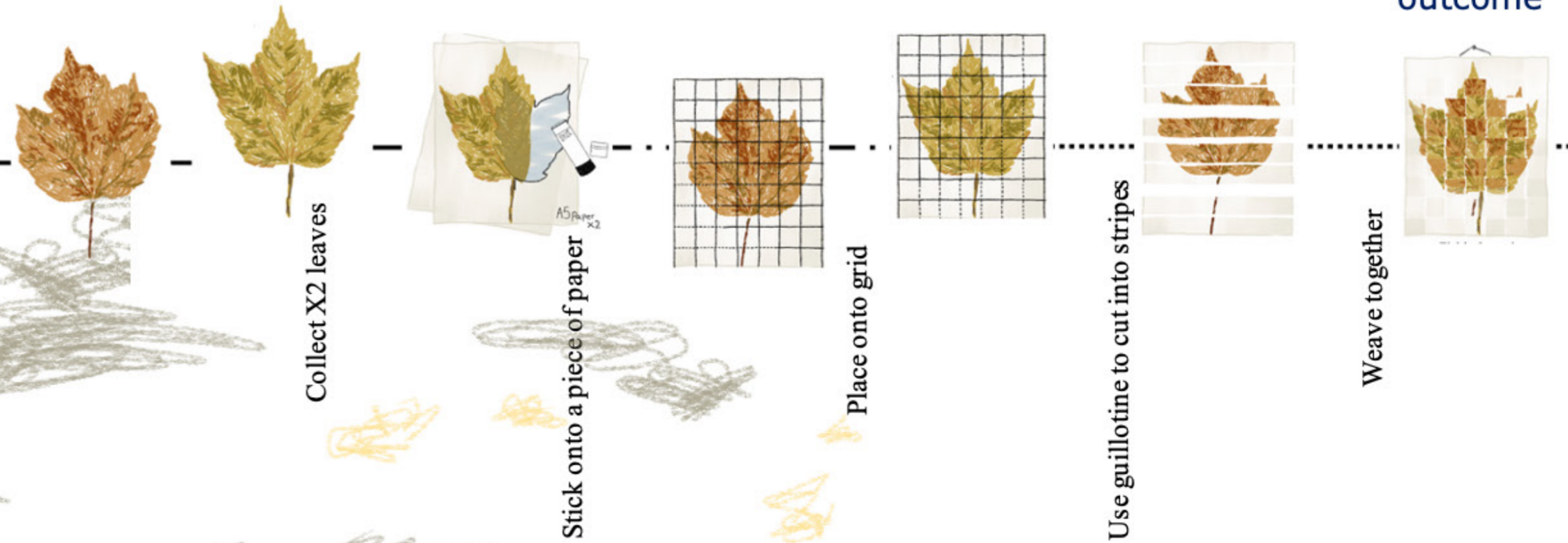
Technical drawing



One site testing



Process of leaf weaving:



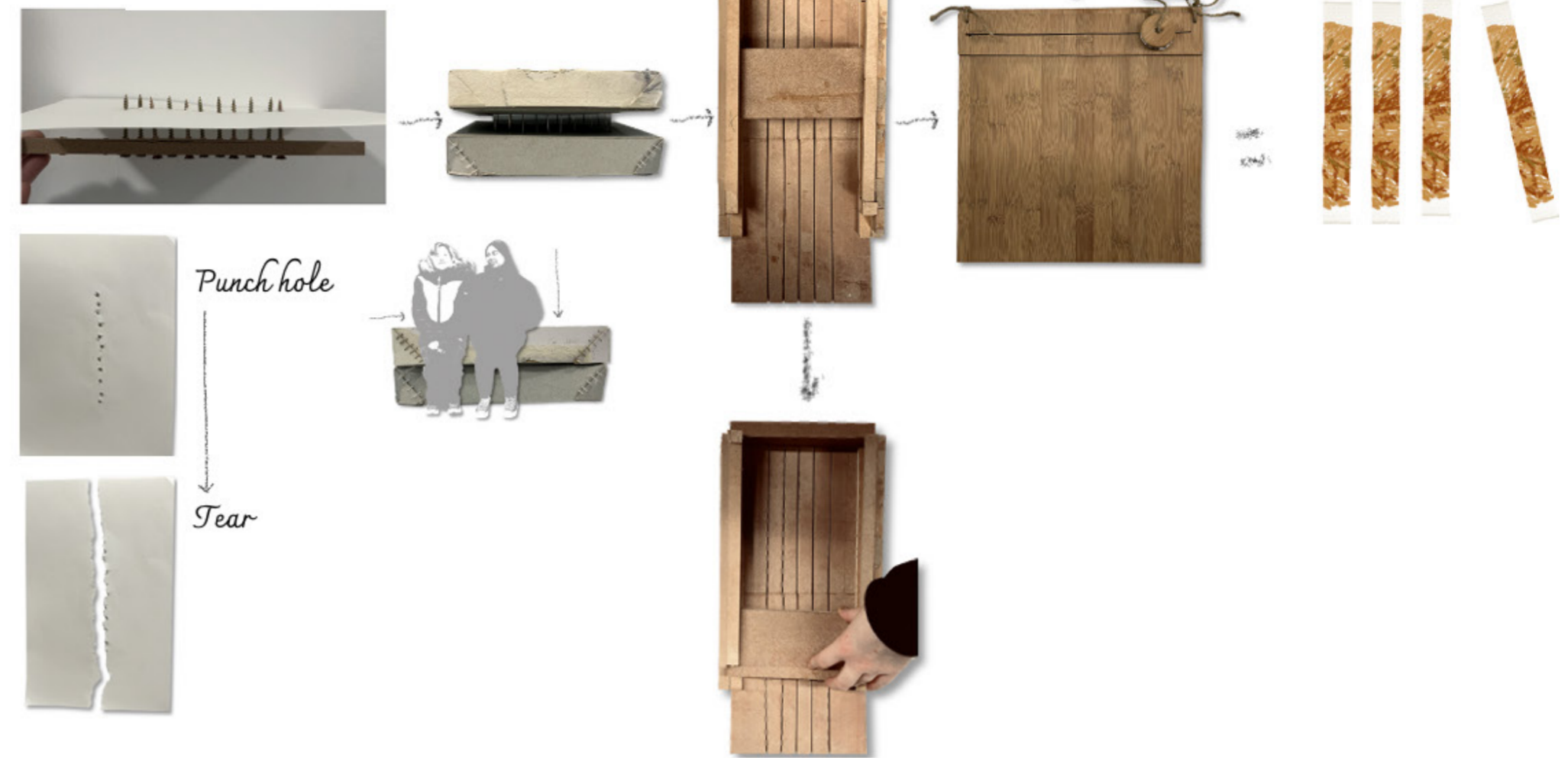
Final weaving outcome

# Construction process

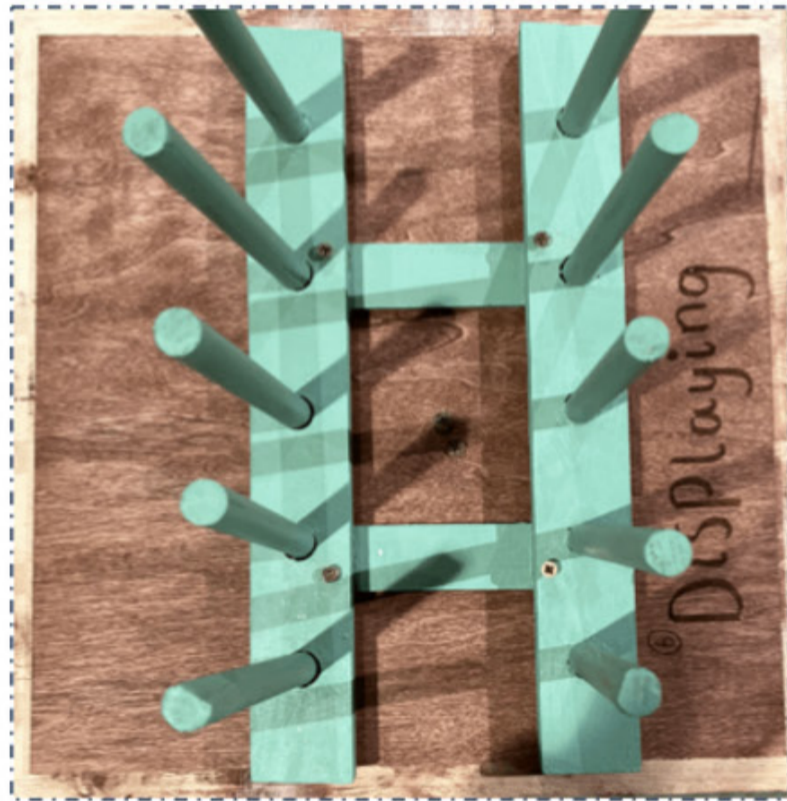
1:20 site model and design intervention



## Guillotine prototypes



## Plan view of desktop

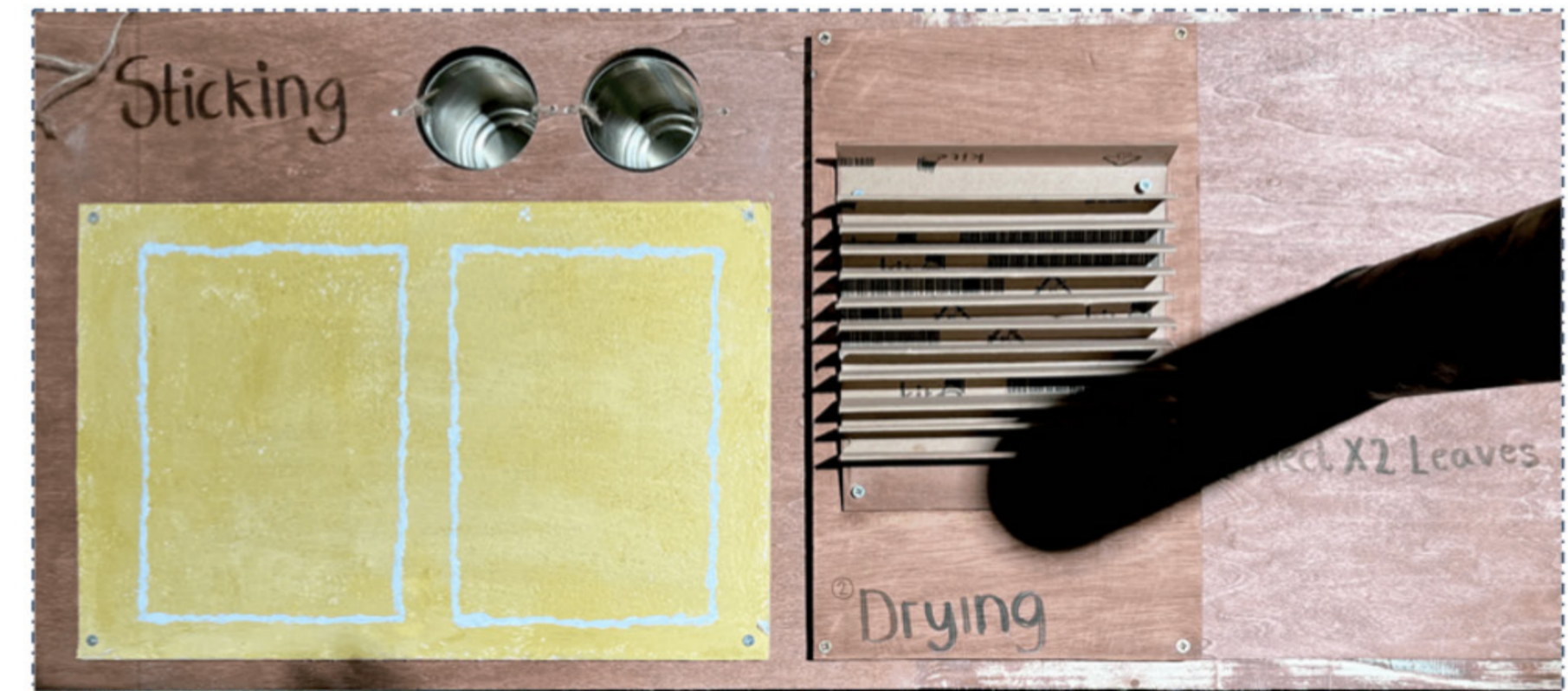


display on the rack



Weave together

Use guillotine to cut into strips



Take X2 sheets of paper and stick 1 leaf onto each sheet

Let them dry on the rack

collect X2 leaves



Constructing the legs – using found materials



An old desk chair found in a skip





Photos by Sutirtha Chatterjee