



SHARED HABITAT

PROPOSAL SUMMARY

Shared Habitat is an urban nature retreat available for short-term rent, an escape designed for those seeking a peaceful break from the fast pace of city life and a chance to connect with nature and a variety of local birds, bees and insects. Through locally sourced materials, nesting spaces and habitats, native planting and quiet observational areas, this project aims to tackle the ongoing issue of urbanization and its effects on local wildlife through consideration, coexistence and understanding among species.

UN SUSTAINABLE DEVELOPMENT GOALS



SAFEHOUSE MODEL - Made collaboratively



SITE CONTEXT



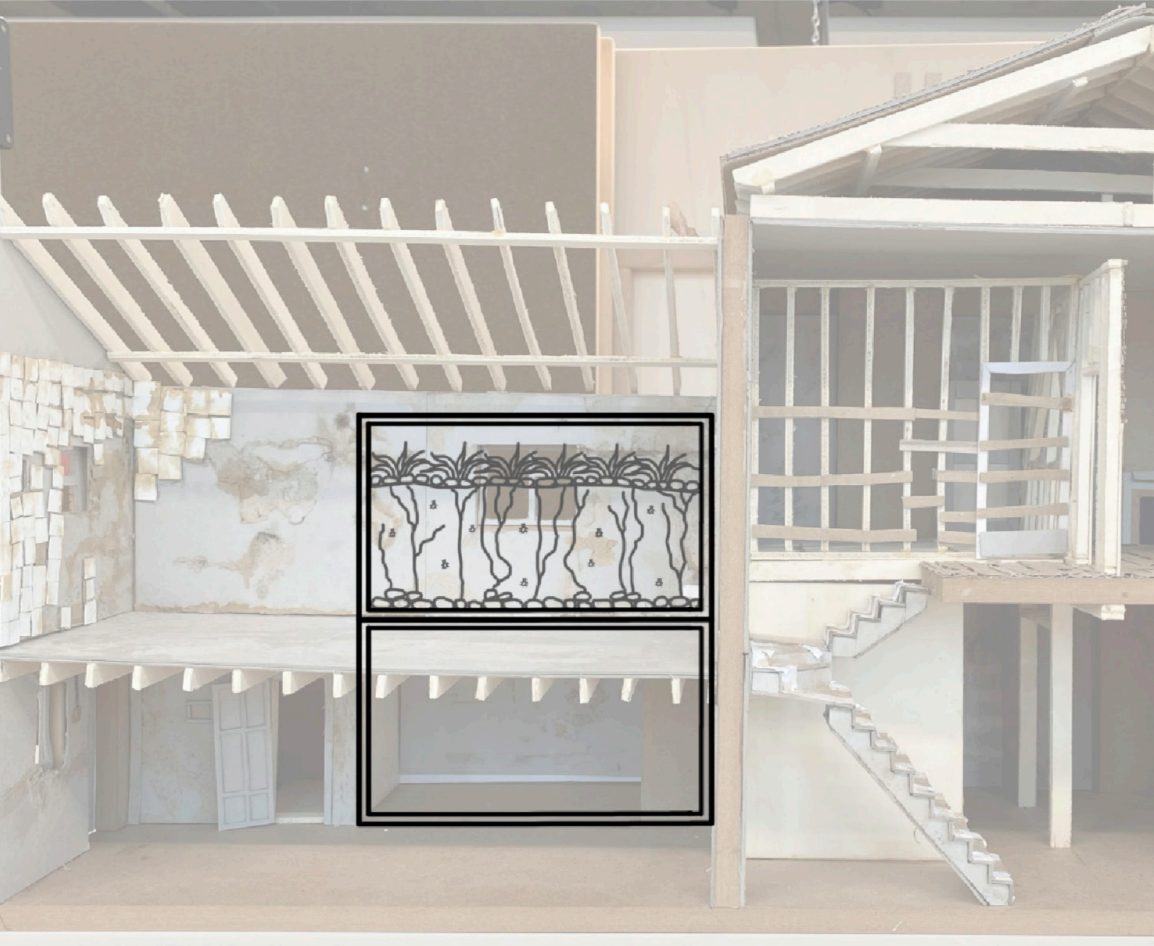
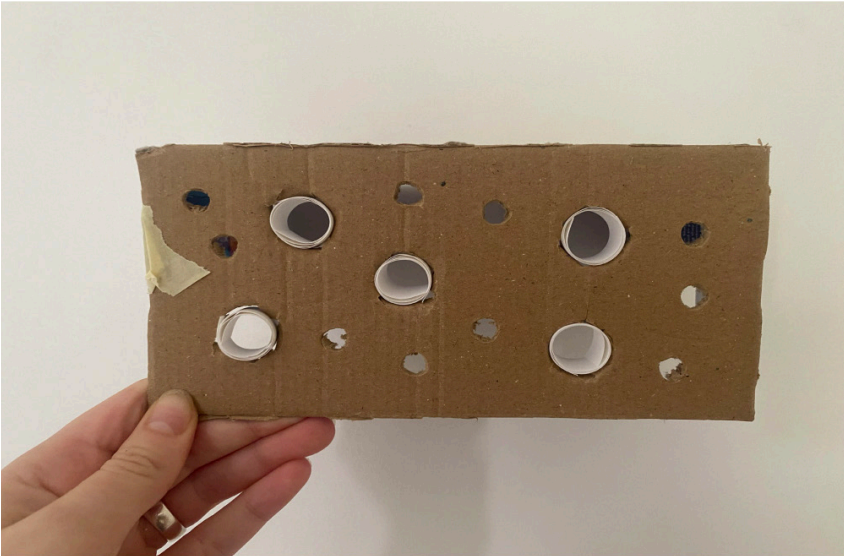
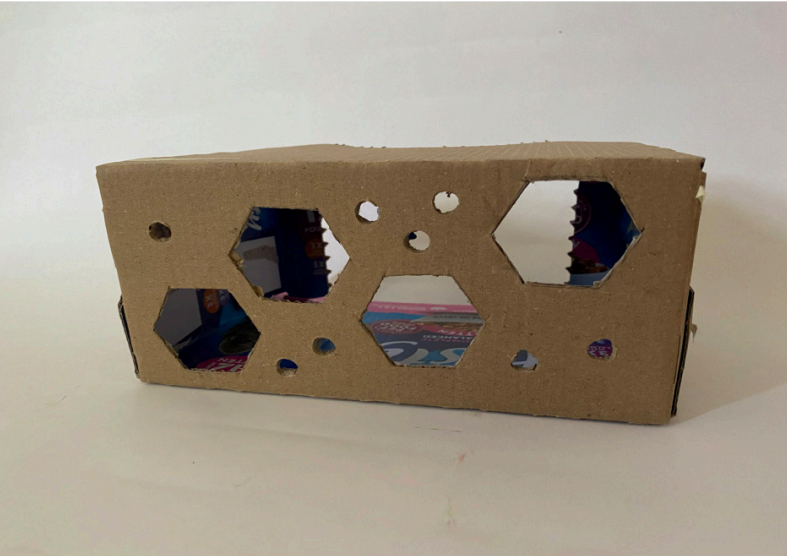
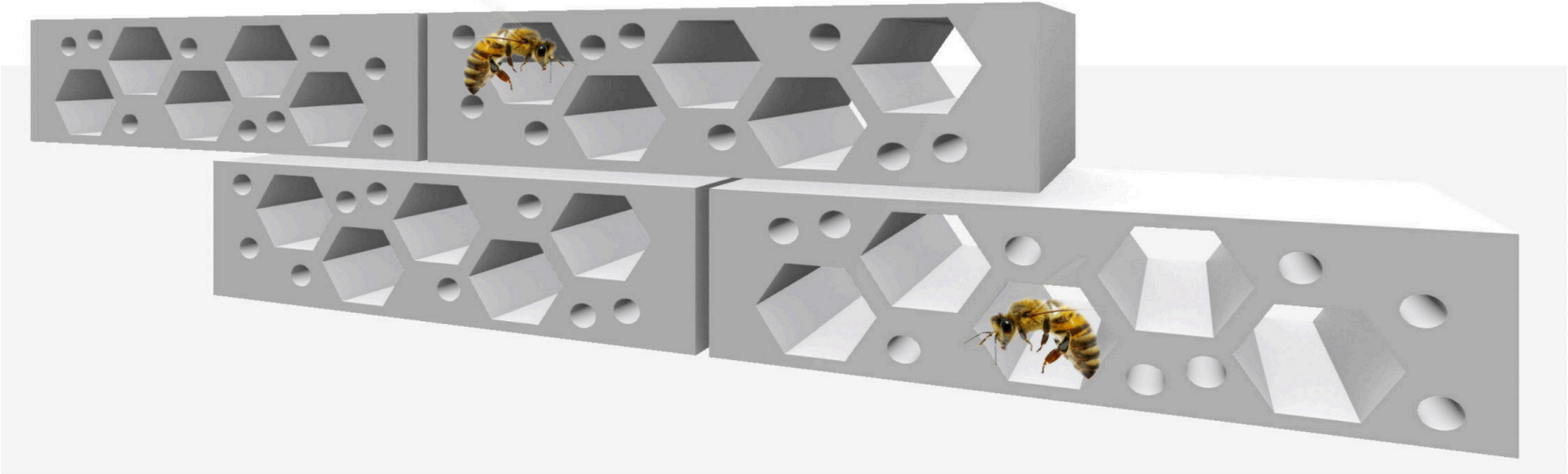
SITE

Shared Habitat is located in Safehouse 1, Peckham, an up and coming area in London, with fast urbanization occurring. This project aims to preserve the original purpose of the safehouse, to provide shelter for people, whilst reimagining it as a shared environment, one that welcomes both human and non-human inhabitants.

Materiality mood board



Bee bricks, bird house, terrarium and interior atrium



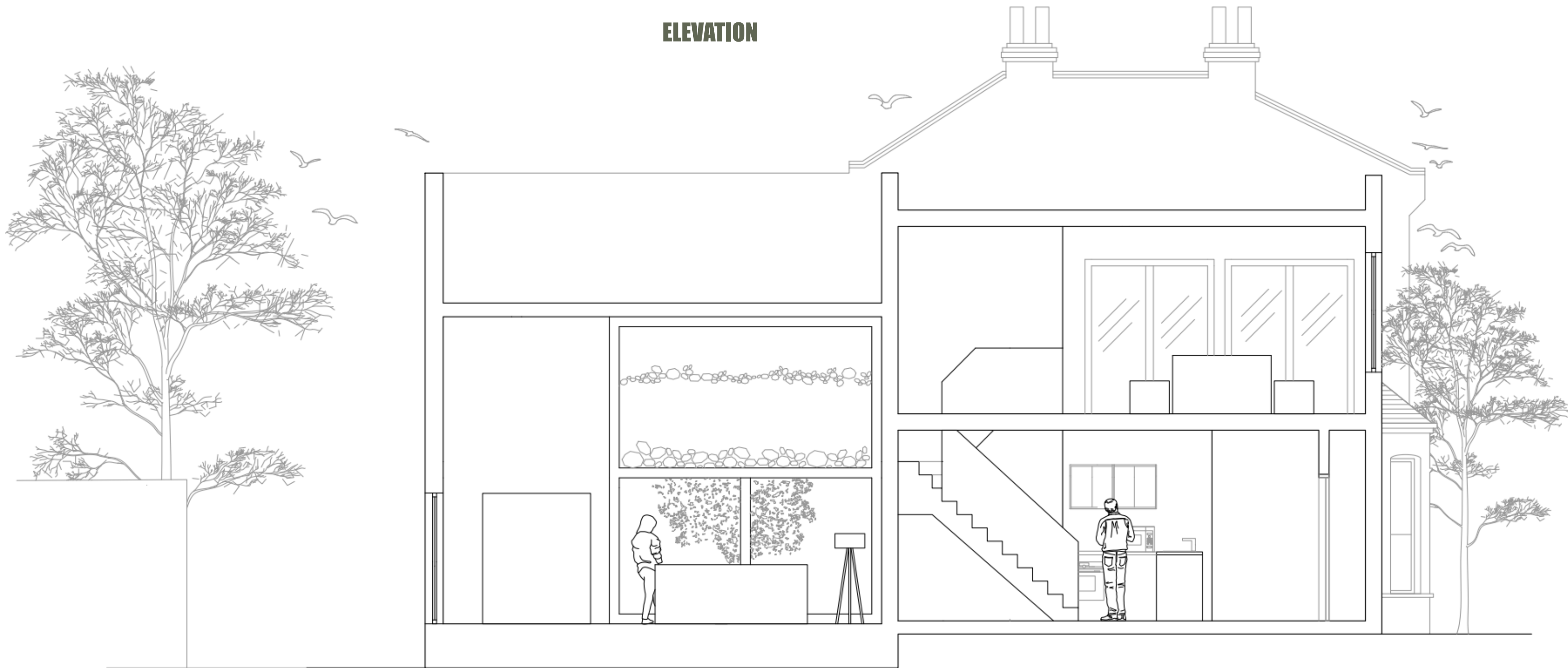
MATERIALITY

Aesthetically, my aim for the habitat retreat was to evoke a sense of calm and relaxation for its visitors. I wanted the space to act as a peaceful contrast to the intensity of urban life, somewhere people could slow down and reconnect with nature. The mood board I created helped guide my choice of material, focusing on natural textures and tones, not only for their relaxing qualities but also because they allow the plants, insects, and birds to become the most vibrant elements in the space. This way, nature becomes the main focus and humans can observe and immerse. To remain sustainable, all materials were carefully selected from London-based companies focused on recycling and reusing.

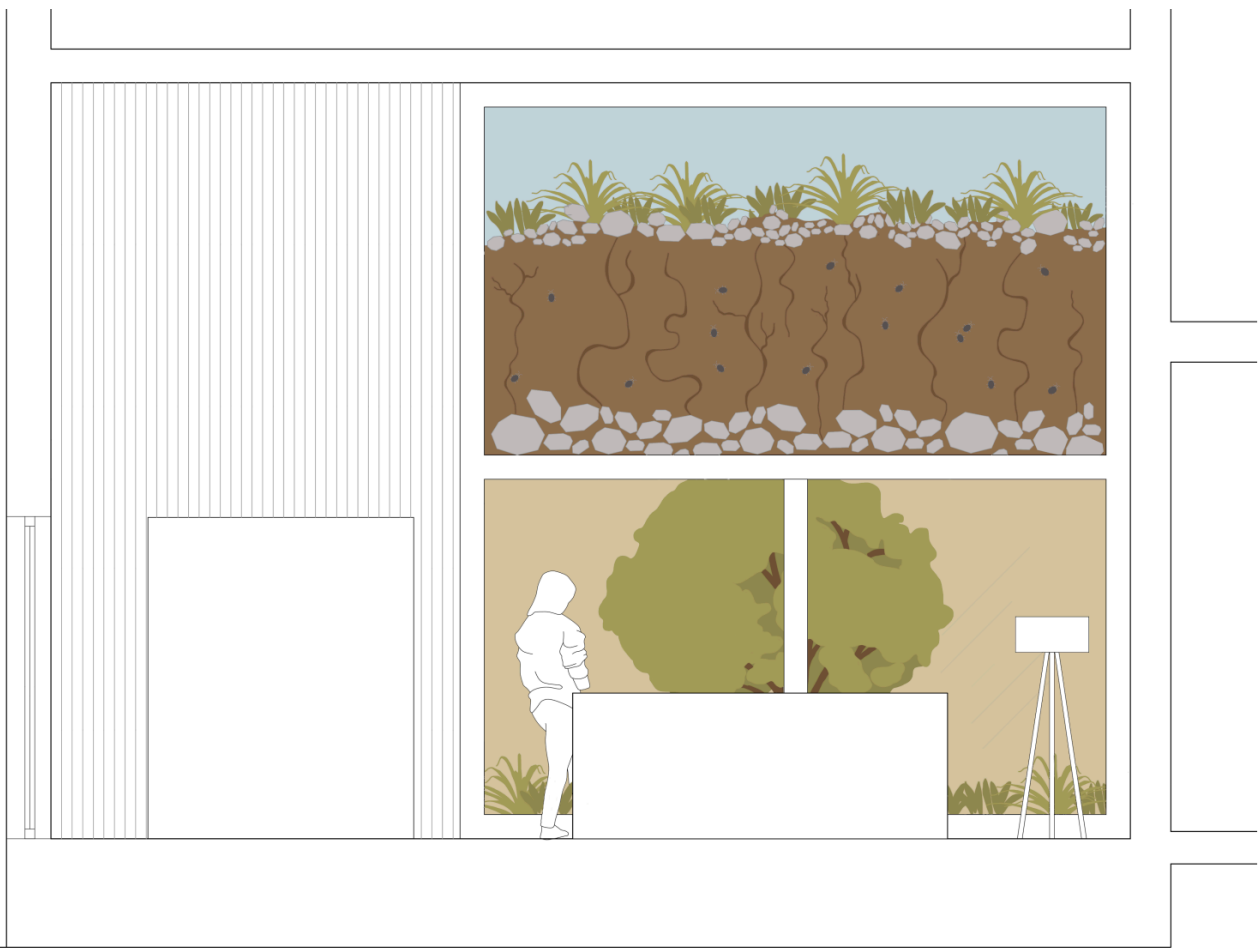
MULTI-SPECIES DESIGN FEATURES

- Bee Bricks to house solitary bees between interior and exterior of house, with glass layer in between for observation.
- Bird houses on the exterior of house for multiple bird species with balcony area at a safe distance for observation and a chance to interconnect.
- Interior atrium with lavender and hazel tree to house and attract insects, birds and other local species, with a space to observe from the comfort of the inside of the house.
- Terrarium to house an ecosystem in itself with subterranean species which can be observed by visitors of the house.

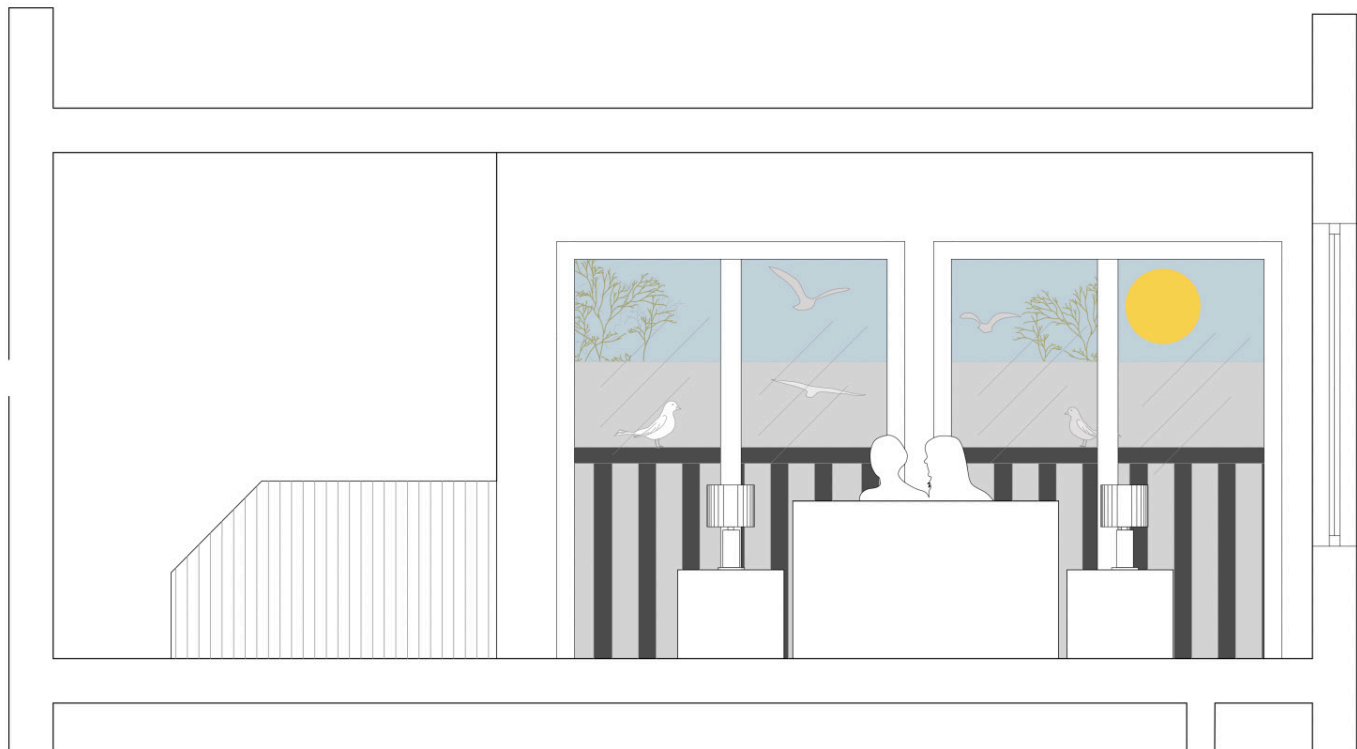
ELEVATION



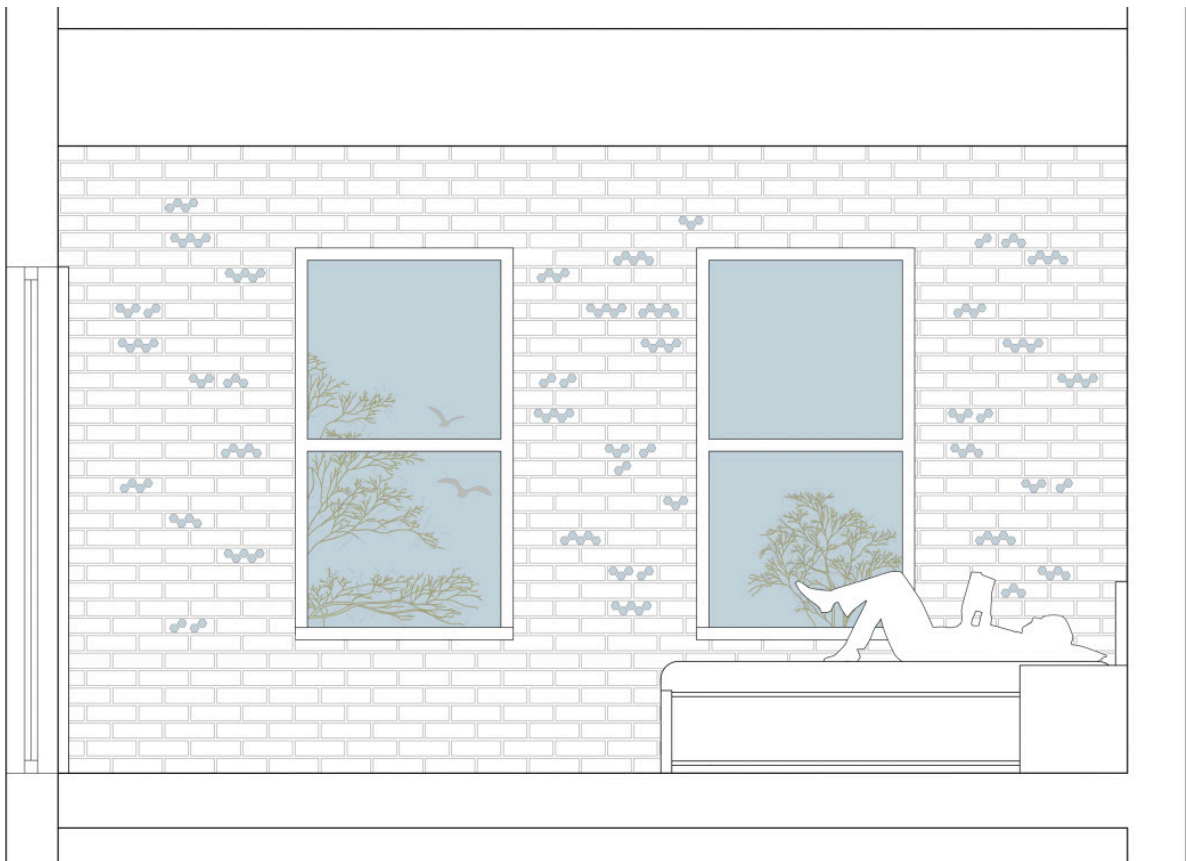
CLOSE UP LIVING ROOM ELEVATION



CLOSE UP BEDROOM ELEVATION



CLOSE UP BEDROOM SECTION





Hazel tree attracts birds and insects



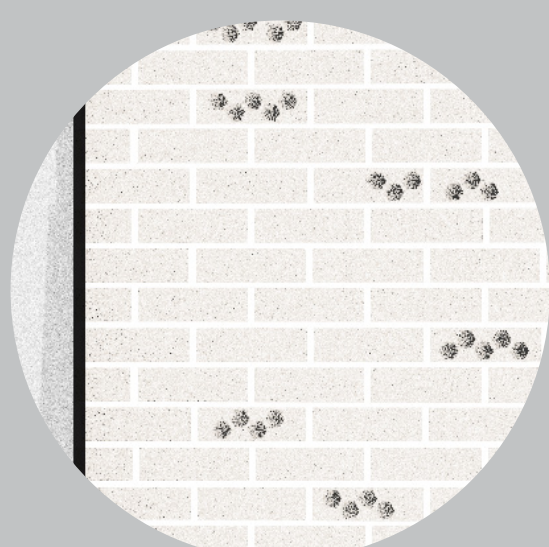
Ants and other insects inside terrarium



Lavender to attract bees and butterflies



Bee bricks casting shadows



Thin layer of glass between bee bricks



Reflective glass for bird safety