

Back to where it came from

Adaptive reuse of a old factory: A historical museum about Peckham and Camberwell
Zijue Wei



Kennedy's Sausage Factory in Peckham, a historical building, reflects its owners' evolving needs and offers significant potential for adaptive reuse. This can transform it into a local history museum with a research centre that fosters sustainable and cultural conditions, emphasizing local history research and interpretation.

The project aims to provide new perspectives on history, create job opportunities, offer educational resources, support the local creative industry, and preserve cultural heritage. This will create a local discursive space, amplifying the community's voice in broader contexts.



The building is envisioned as an intervention integrated into the broader circulation of Peckham and Camberwell, encompassing cultural, political, economic, and recycling dimensions, emphasizing local sourcing and utilization.

In this project, materials and products for construction will be sourced locally, offering two main benefits:

1. Encouraging local economic growth.
2. Fully utilizing local waste materials.

This strategy promotes local circulation, a key design principle. By reintegrating waste materials, the project generates benefits that enhance the standard of living for local residents, providing a more profound advantage.



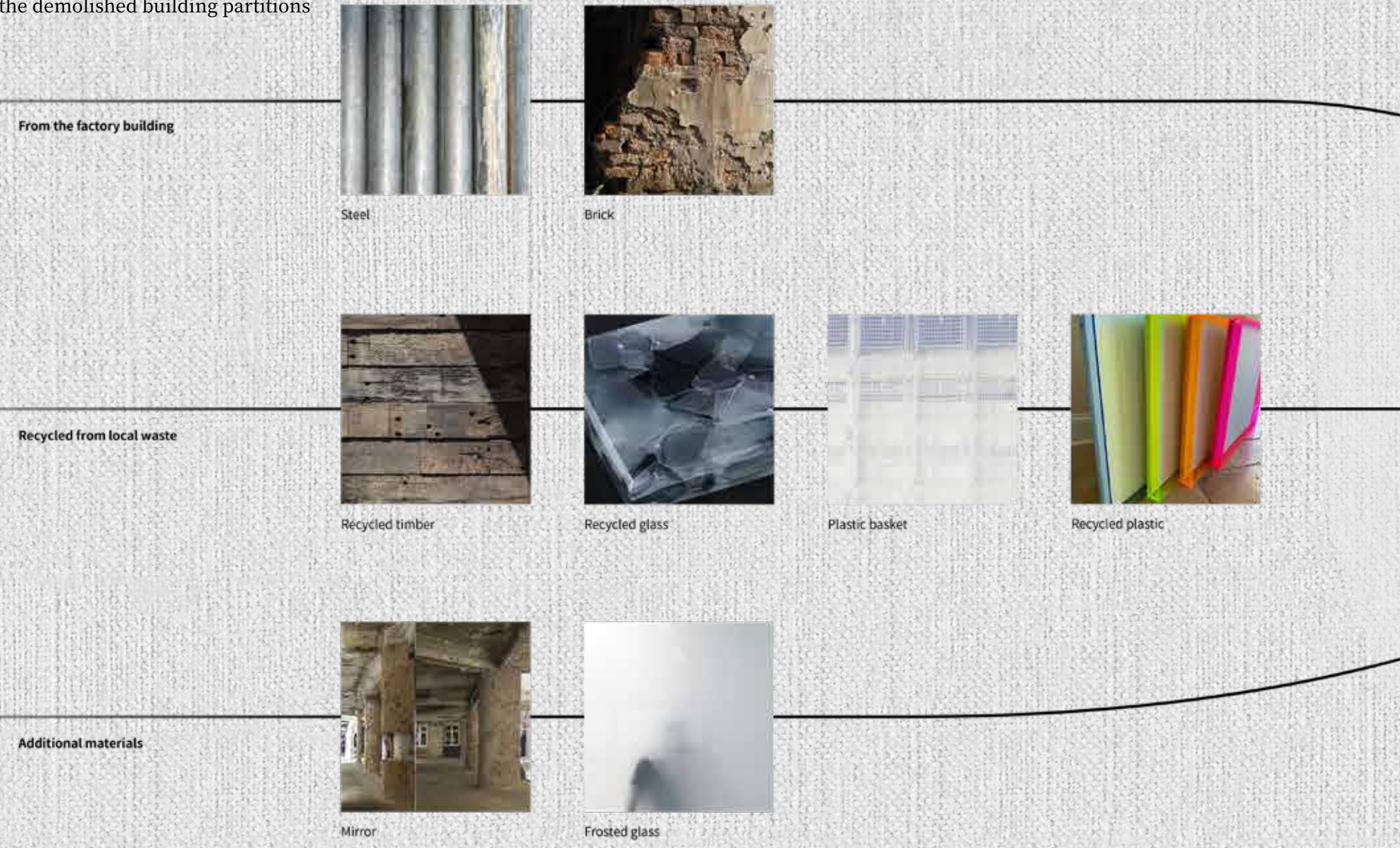
A virtuous cycle: Gaining benefits from local wastes

The circulation of materials from local area and from the demolished building partitions

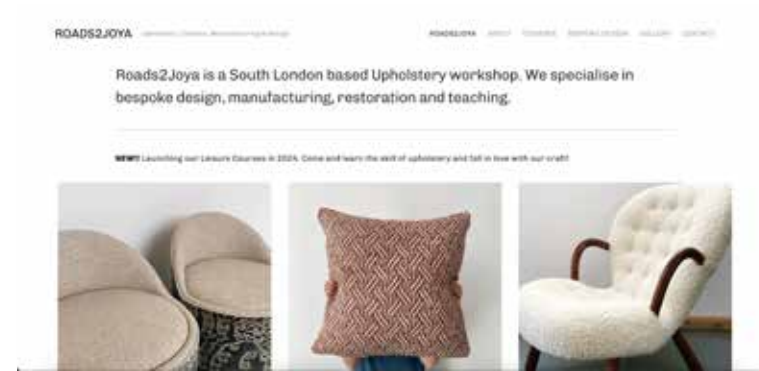
The building's conceptualization integrates it into Peckham and Camberwell's broader circulation, emphasizing local sourcing, utilization, and recycling across cultural, political, and economic dimensions.

By sourcing additional materials locally, this project encourages economic growth and fully utilizes waste materials from the area, fostering local circulation and enhancing residents' standard of living.

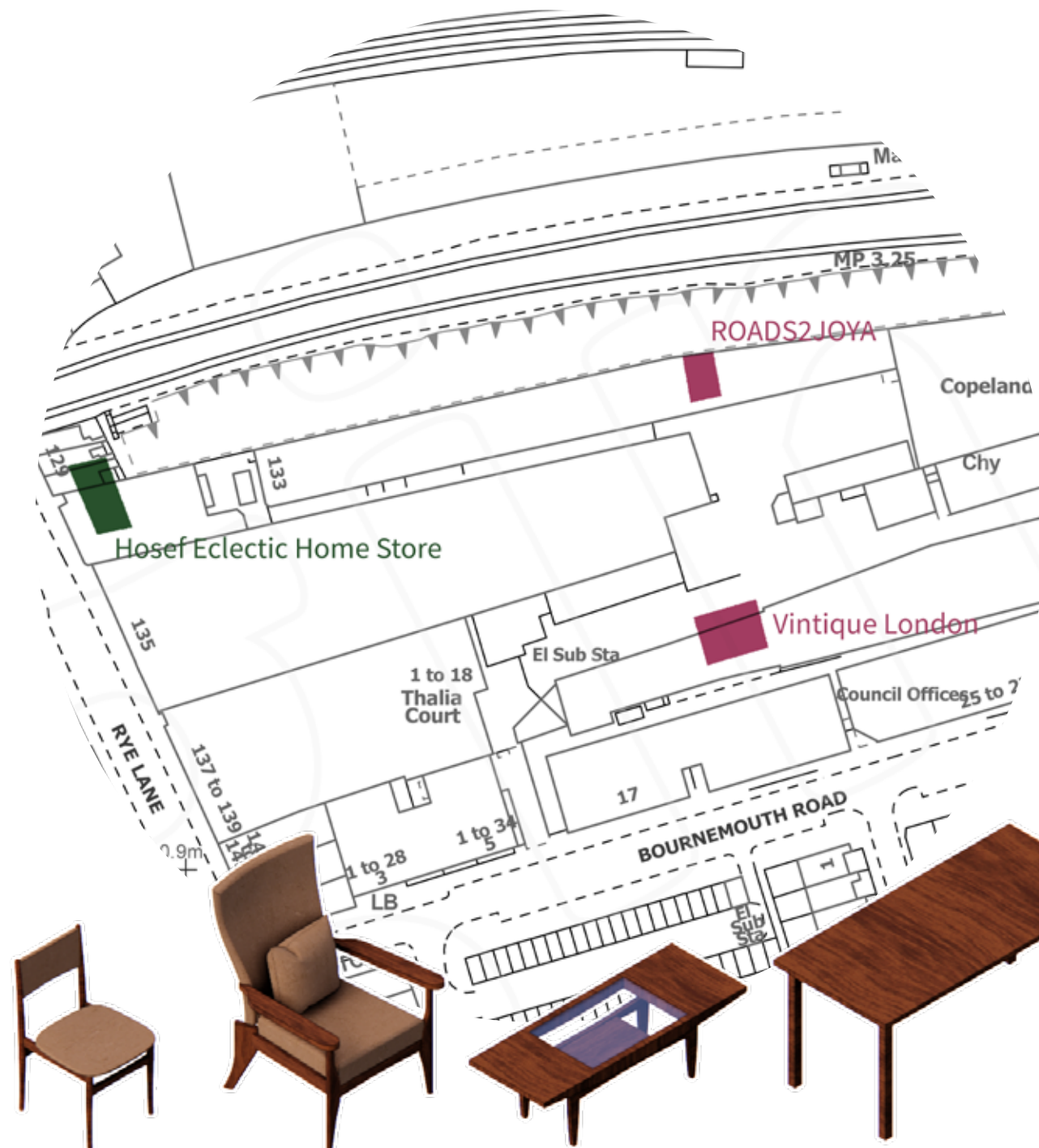
To boost local waste recycling and cut construction waste, existing materials will be recycled whenever possible. For example, reclaimed bricks from demolished walls and floors will maintain structural integrity through secondary use like external flooring. Plastic, glass, timber, and metal will be collected from the local and wider areas, repurposed for new structures, minimizing the need for new materials and conserving energy and resources.



To meet the need for additional furniture while fostering support for Peckham & Camberwell's creative businesses, including designers and artists, chairs, armchairs, and other decorative pieces will be sourced from local establishments.



Primarily tapping into the creative community around Peckham Rye Lane, such as Copeland Park & Bussey Building, this initiative goes beyond mere financial support. It offers businesses increased public exposure, advertising, and networking opportunities with potential customers from diverse areas.

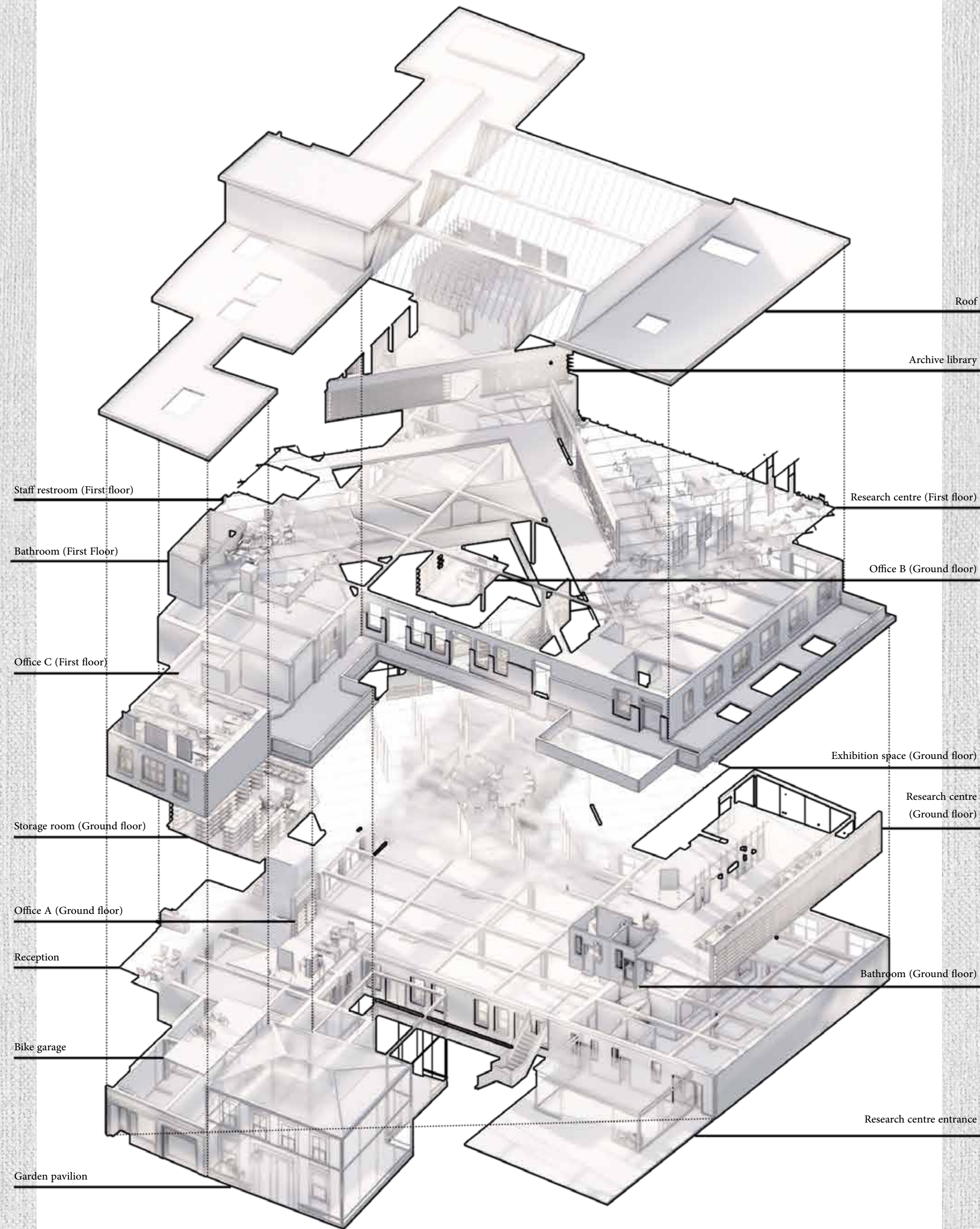


Construction: From its roots

The building design according to its hundred years of iteration

Dating back to the 1920s, the building's history is etched in its very structure, evident through a patchwork of brick types, residual structures on walls, and shifts captured in historic satellite images and maps.

Today, it stands as a chimera, bearing witness to expansions, demolitions, and refurbishments by various hands, each leaving its mark and narrative. Yet, while discernible to the observant eye, these details alone do not transform the building into a narrative space. The information lacks relative significance and clarity, preventing a cohesive narrative from emerging.

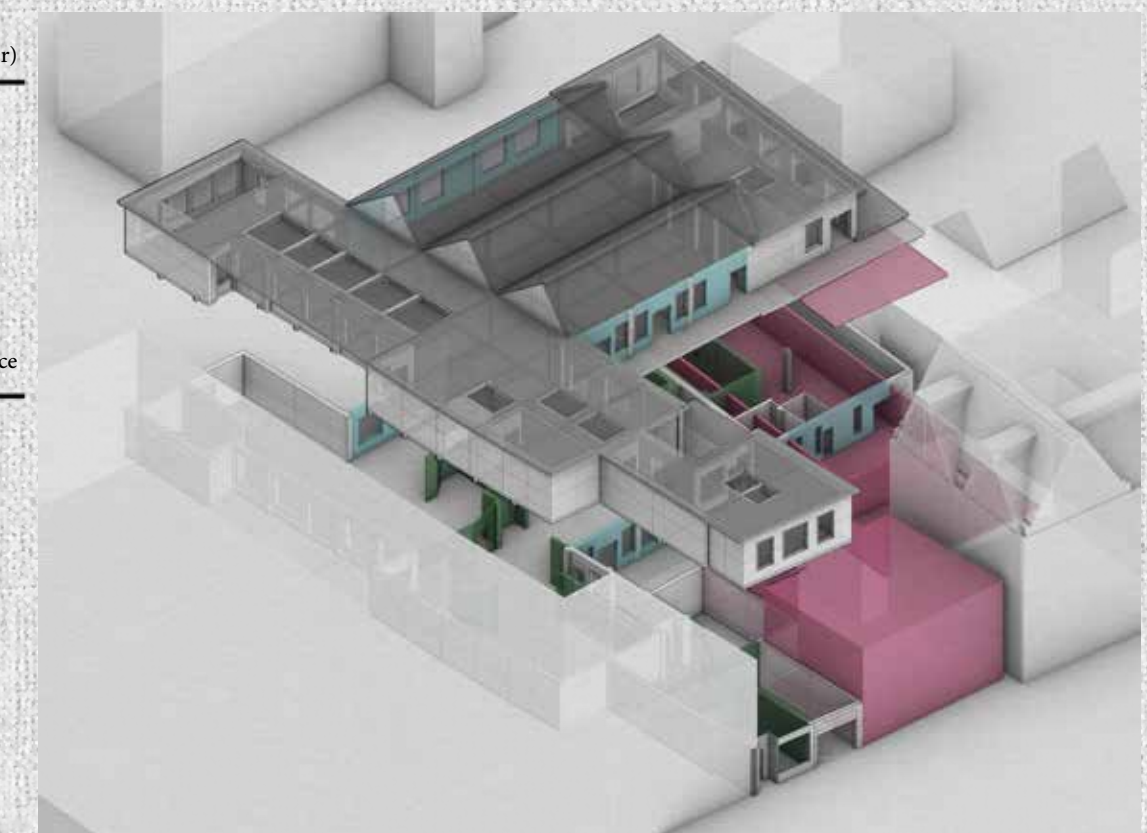
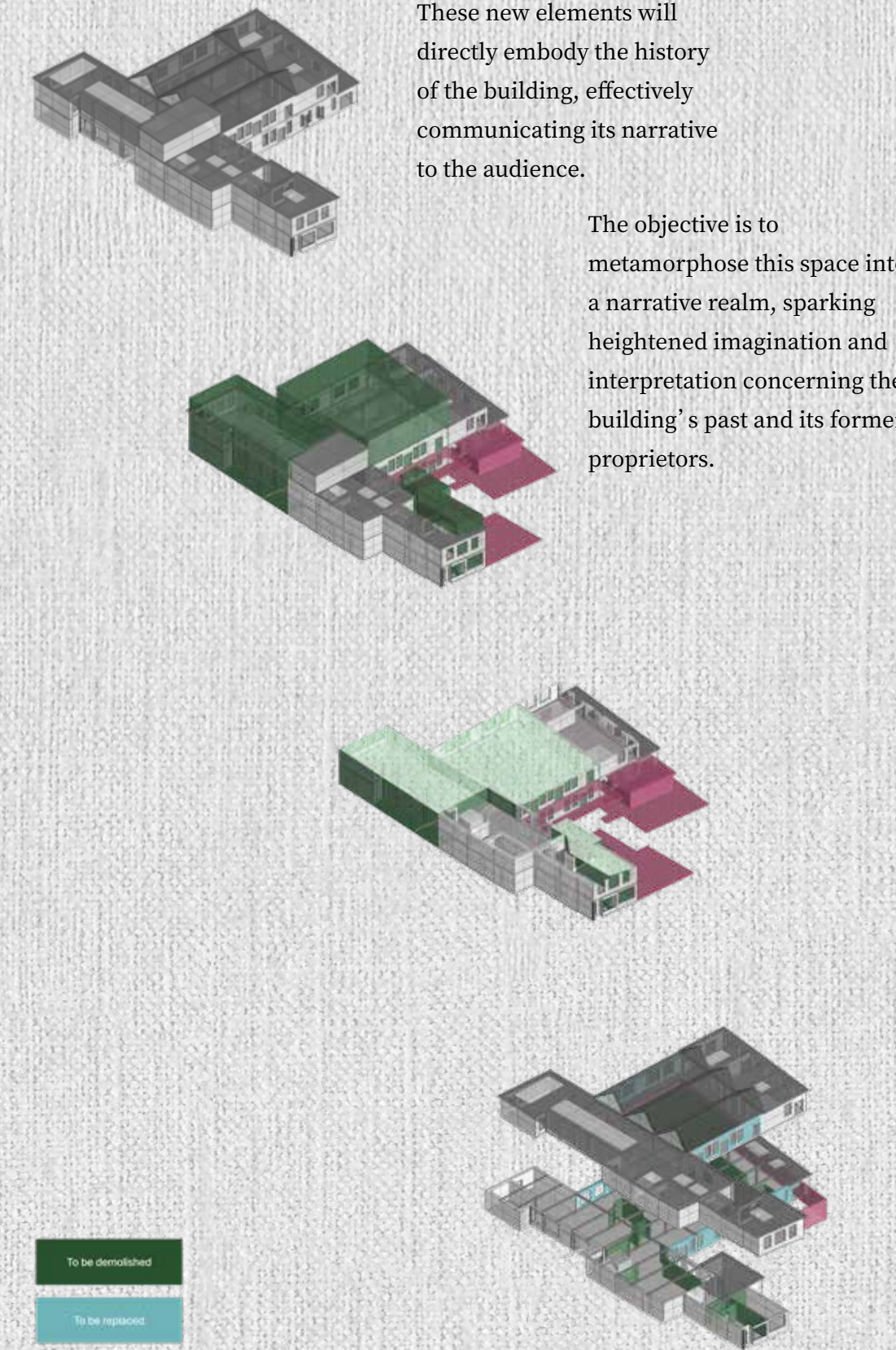


From past to future

The building design according to its hundred years of iteration

Based on the evolving statuses of the spaces over time, a strategy has been devised to construct diverse extensions and additional structures. These new elements will directly embody the history of the building, effectively communicating its narrative to the audience.

The objective is to metamorphose this space into a narrative realm, sparking heightened imagination and interpretation concerning the building's past and its former proprietors.



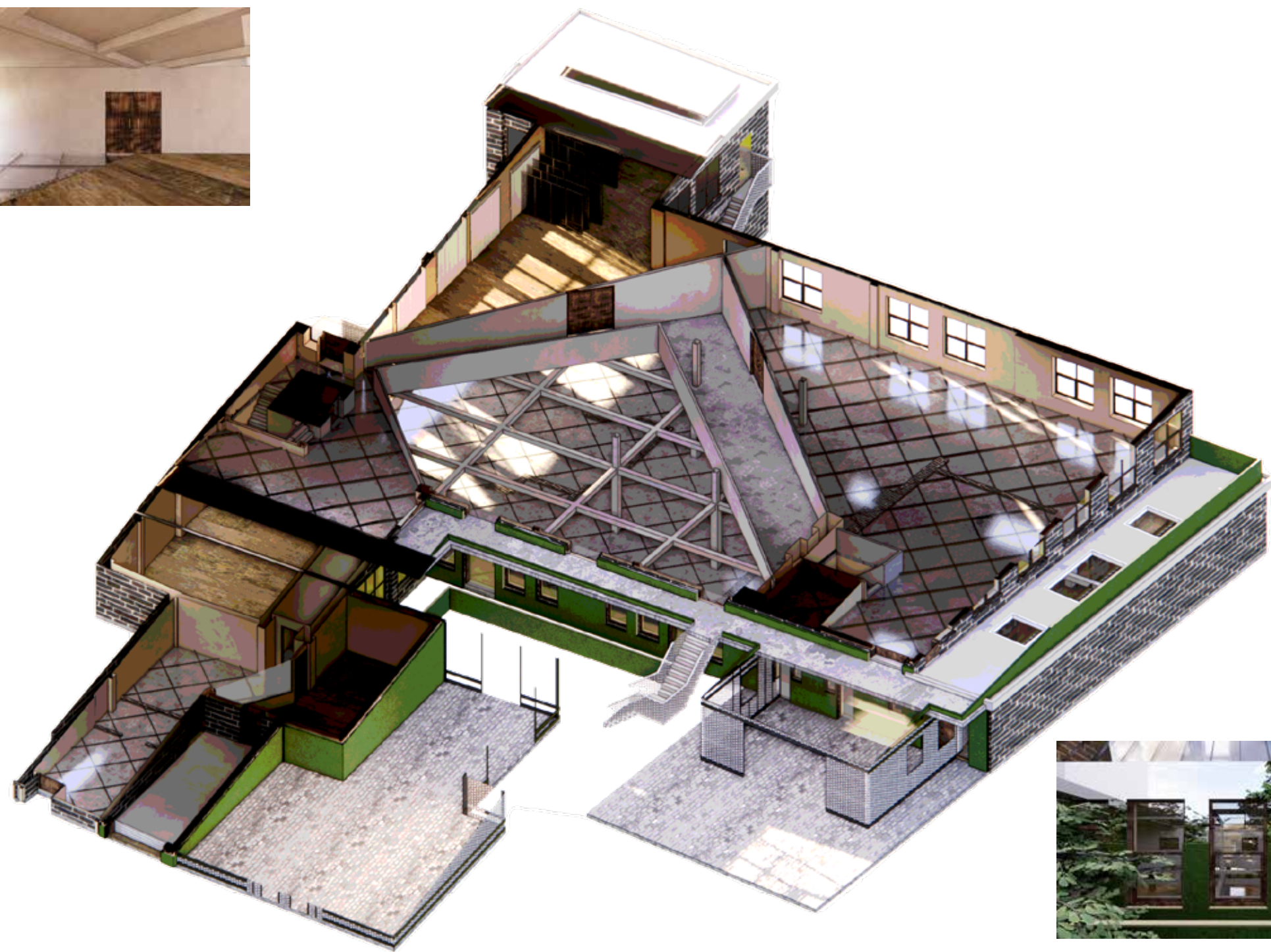
Reading the past through the traces of time

The transformation from an old building to a narrative space



The new structure replicated the historical layout, such as the space behind the South London Gallery (fire station), using distinct materials to complement the existing brick structure and supplement insufficient narrative evidence. Any post-construction additions will be marked by other spatial tactics.

A key principle is the preservation of the existing structure in its entirety as a physical record of the site's history, aiming to minimize changes to the original building.



Considering the artistic characteristic of the local area, this collage was created to illustrate the investigative process of history and archaeology as depicted in the museum's concept, showcasing the logical connections between different events and how their consequences are conveyed through local artwork, as the message to be conveyed by the design.

Meta-exhibition: A self-consistent narrative context

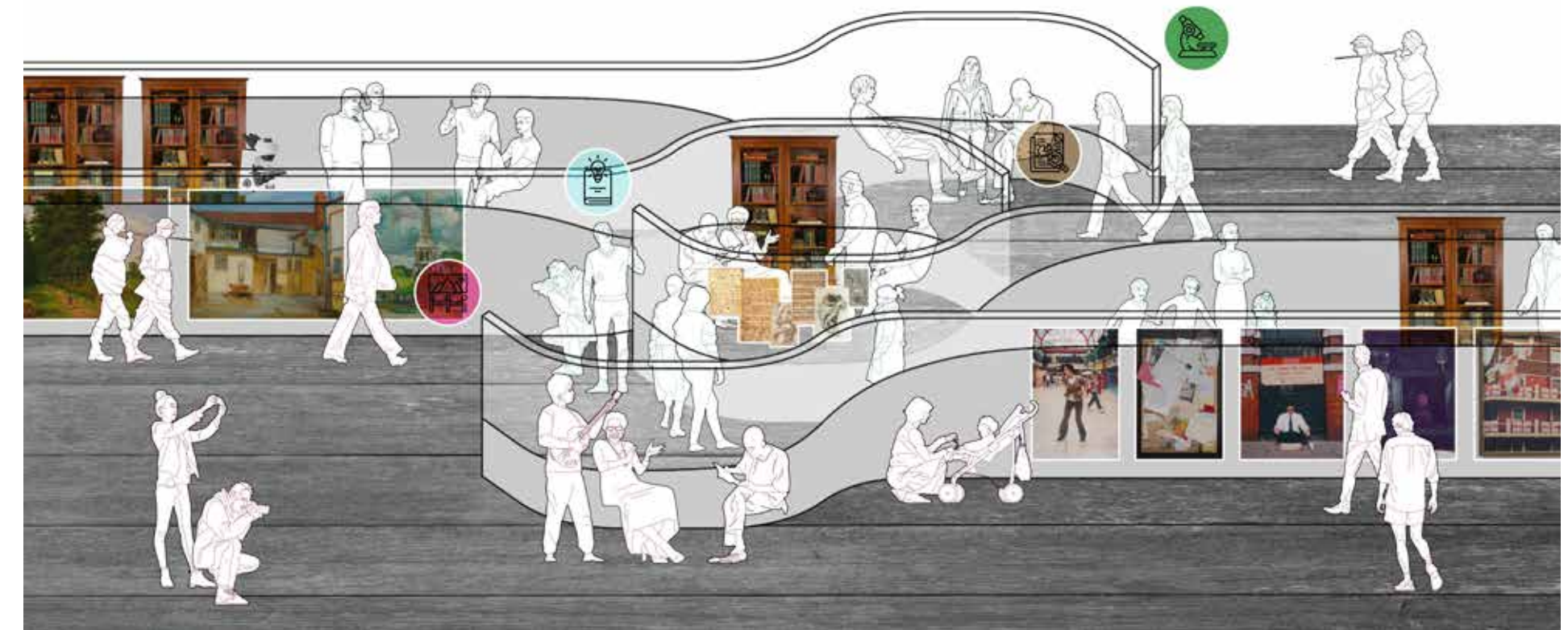
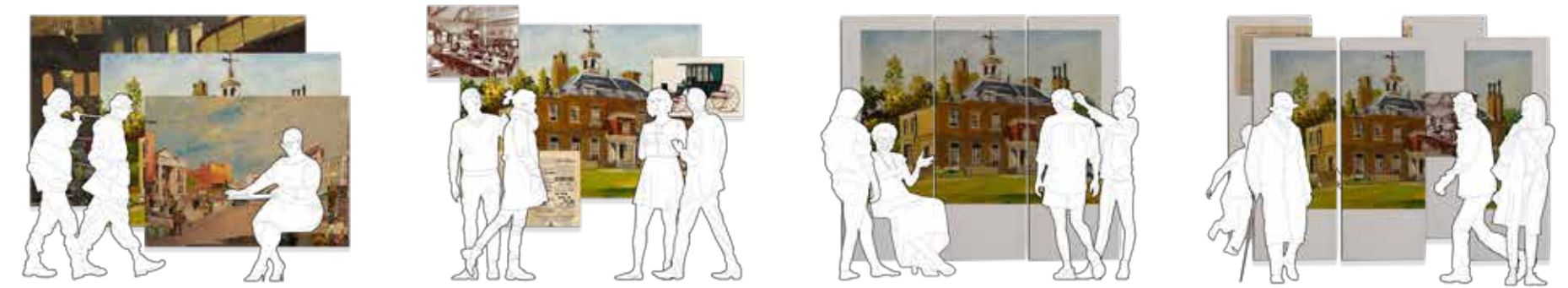
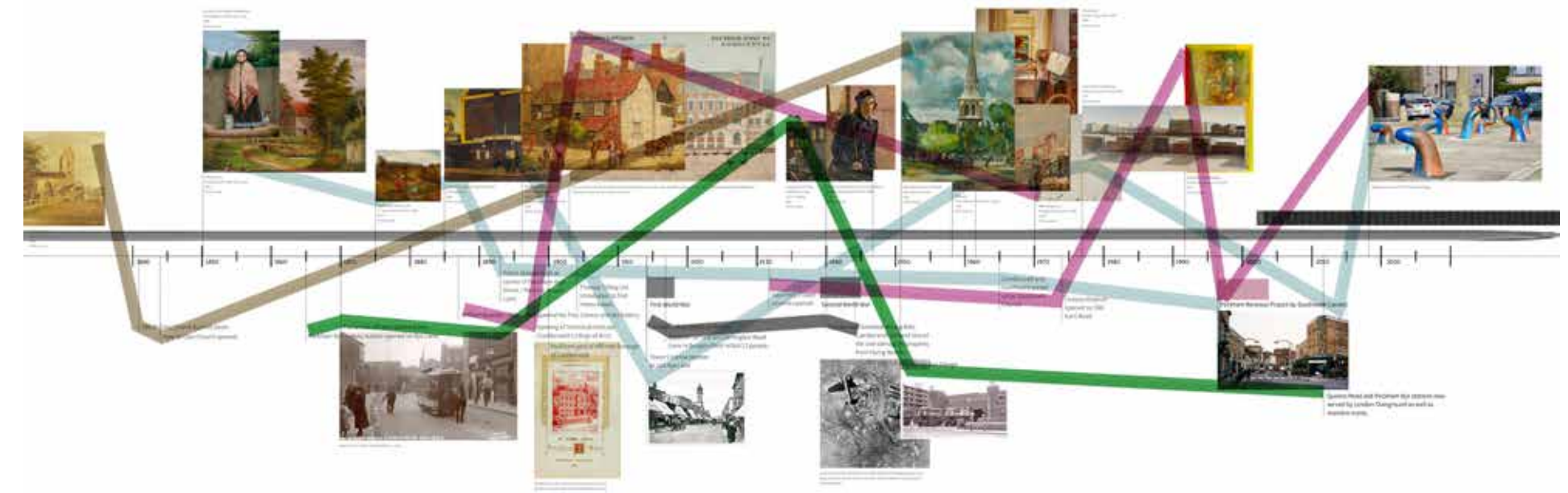
Exhibition design for the historical museum

Peckham and Camberwell, with their rich historical and artistic heritage, present a history that's challenging to encapsulate in a single exhibition. To effectively represent the area's history and development, transportation was chosen as the central theme.

discussions about historical contexts, potential inequalities, and the future of the area.

Thus, the development of transportation methods was selected to demonstrate the use of the exhibition space and the internal modular system, fostering deeper engagement with the community's past and future.

Transportation-related drawings can reveal technological advancements and social relationships across different classes, sparking



A journey of reading the history

The journey of different visitors

The space is designed to accommodate two distinct audiences: researchers and general visitors. Both groups can navigate the area and convene at the central exhibition space, fostering communication and discussion.

Concurrently, essential facilities like restrooms, reception areas, and public spaces are seamlessly integrated into the building's layout.

Entering the space Walking in or booking tickets Entering the exhibition space Viewing exhibitions Joining events



Public's entrance

Main space

Additional spaces



Resting: Lunch, snacks and random chats

Holding events, talks and teaching sessions



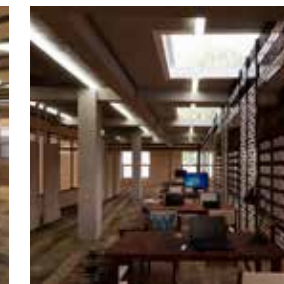
Communication: Building connections between students, public and professionals, to improve local education level and promote local culture

Joining open days about the history of the building and its facilities

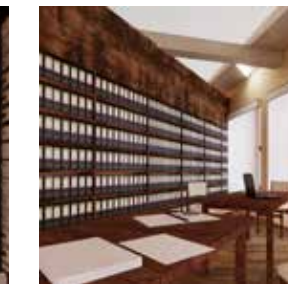
Talking with professionals and gain knowledge



Managing archive collection



Conducting research



Collaborating with colleagues and partners



Planning and curating exhibitions



Entering the research centre



Entering the site

Main space

Staff's entrance

Dropping in for emergent toilet-need

Bringing back souvenirs and memorising the local history



Additional spaces

