

JinLing Artisan Center

A Centre for Preserving and Revitalizing Nanjing's Traditional Culture and Crafts in Nanjing, China.

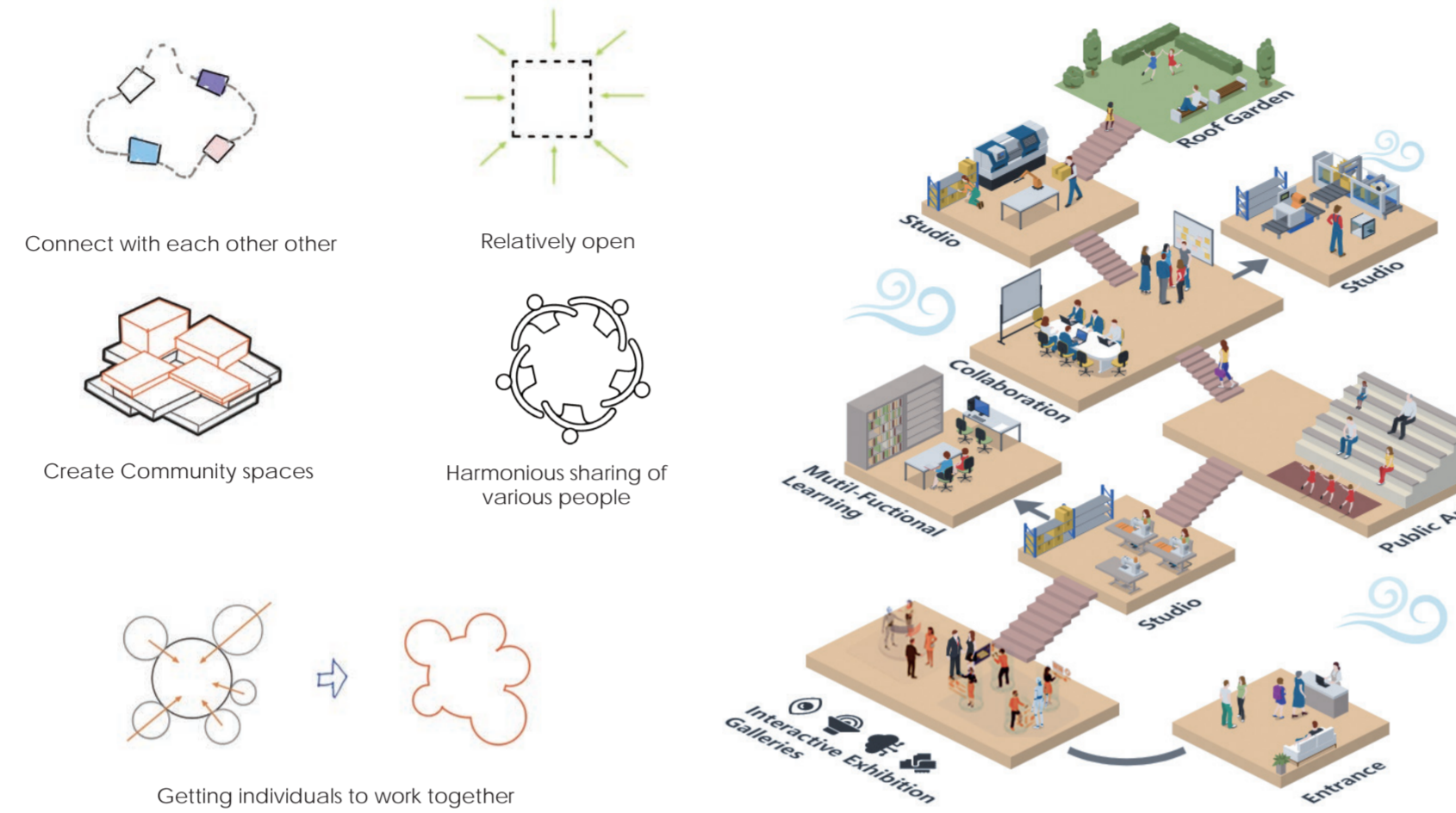
BACKGROUND

While conducting the topic research for my final major project, I found myself deeply engrossed in the matter of the decline of craft making in China, specifically in my hometown of Nanjing.

The dying art of traditional Chinese craft among the youth in China is a topic that reflects the changing cultural landscape and the influence of modernization and globalization. While traditional Chinese crafts have a rich history and are deeply rooted in Chinese culture, they are facing significant challenges in attracting the interest and participation of the younger generation.

There is a growing movement among some young people in China to rediscover and appreciate their cultural heritage. With a renewed interest in traditional customs and practices, I hope that the younger generation will develop an appreciation for traditional Chinese crafts and contribute to their preservation. Hence, my proposal for a centre to preserve Nanjing's traditional culture was born.

DESIGN CONCEPT



CONNECTIVITY

ENVIRONMENT CONNECTION

The lantern structure is merged in the design of atrium, and the materials of the building are merged with the Nanjing vernacular materials



CULTURAL CONNECTION

A place to connect craftsmen and the younger generation

DATA CONNECTION

The connection between internet and reality



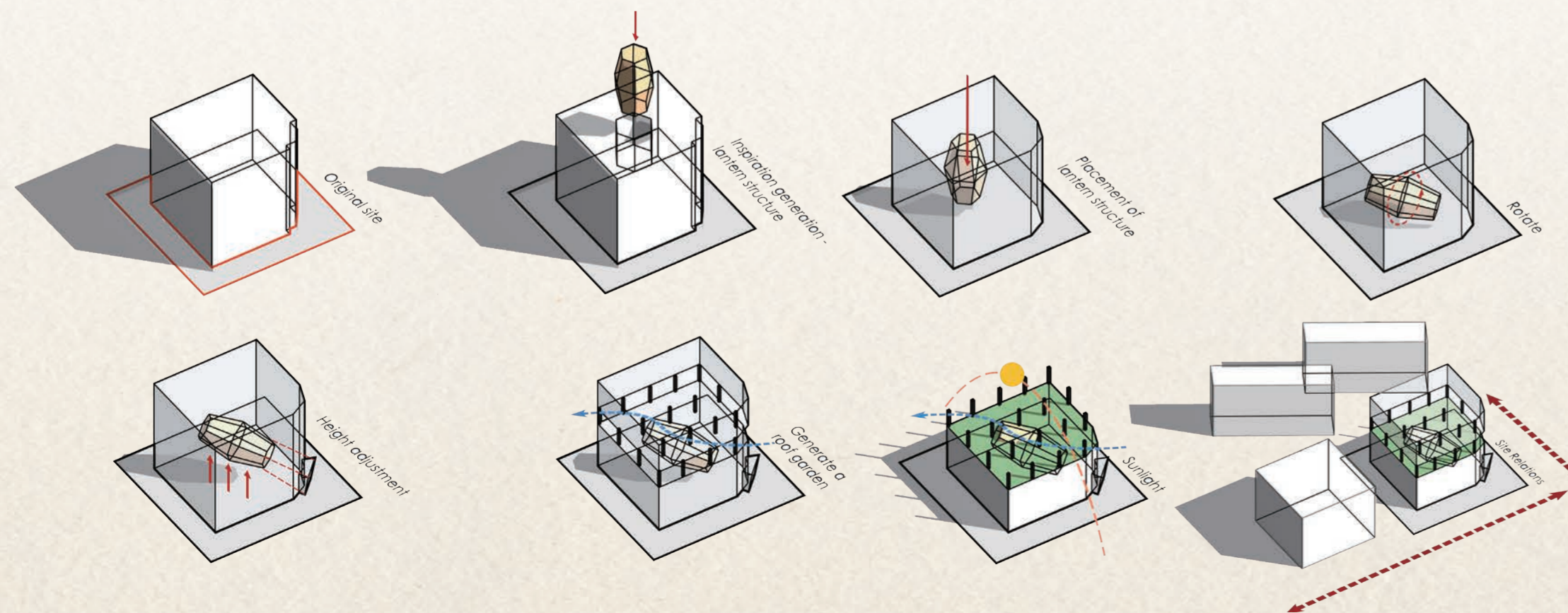
SPACE CONNECTION

Flowing circulation connects all studio spaces

DESIGN NARRATIVE



VOLUMETRIC DIAGRAM



A Centre for Preserving and Revitalizing Nanjing's Traditional Culture and Crafts

The central objective of this project is to establish a Traditional Culture and Crafts Centre in Nanjing, China. This centre it to serve as a platform for craftsmen and the general public, fostering the preservation and revitalization of Nanjing's rich traditional cultural heritage. The aim is to bridge the gap between past and future generations by engaging in the art of traditional Nanjing's craft making, exploring through interactive experiences.

Situated in Nanjing, China, this hub is primarily catered to young generations and craftsmen. It serves as a multifunctional service centre, offering a wealth of information on craft, art, and cultural resources pertaining to the local community and people's way of life.

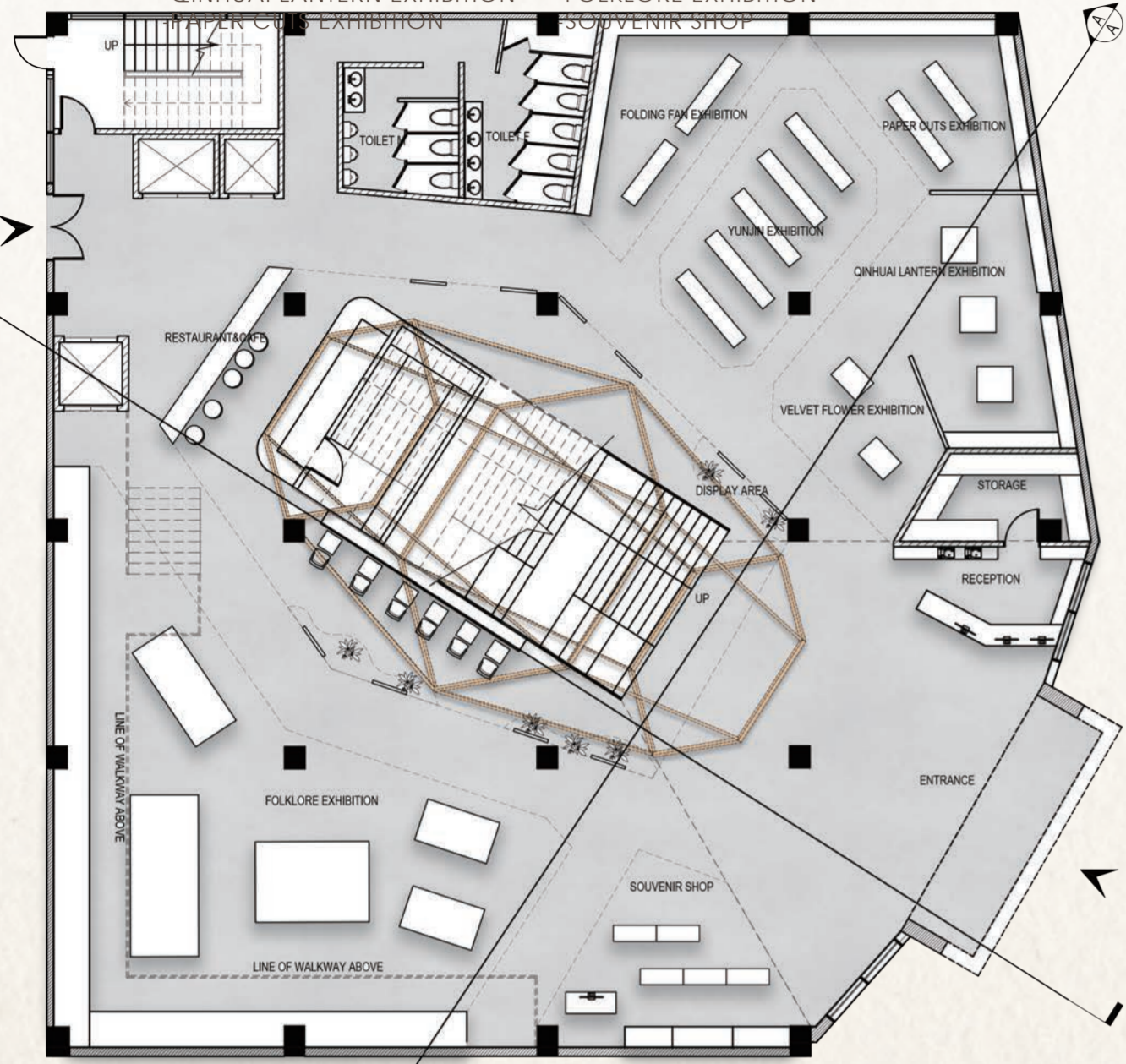
The architectural design of this building focus on attracting the youth. Through the integration of art and communication technologies, the centre evolves into a vibrant hub for culture, creativity, and craftsmanship. Its primary objective is to provide an immersive exhibition experience that not only showcases cultural heritage but also empowers individuals to create their own traditional handicrafts. Through this approach, the aim is to expand opportunities for cultural heritage engagement and cultivate a profound sense of cultural pride among the people.

The design embraces sustainable practices, adapting to the technological, social, and behavioural changes of the social media era. Its overarching goal is to inspire children and young individuals to become active participants in the Chinese economy through the art of traditional craft-making. Moreover, it cultivates a passion for creativity and the arts, providing a space for lifelong learning.

The centre utilize digital methods to ignite the interest of young generations in learning traditional crafts while simultaneously creating new avenues for older craftsmen to pass on their invaluable skills. By leveraging digital technologies, the idea is to enhance accessibility, attract younger audiences, and ensure the continued inheritance of these remarkable Nanjing' craft traditions.

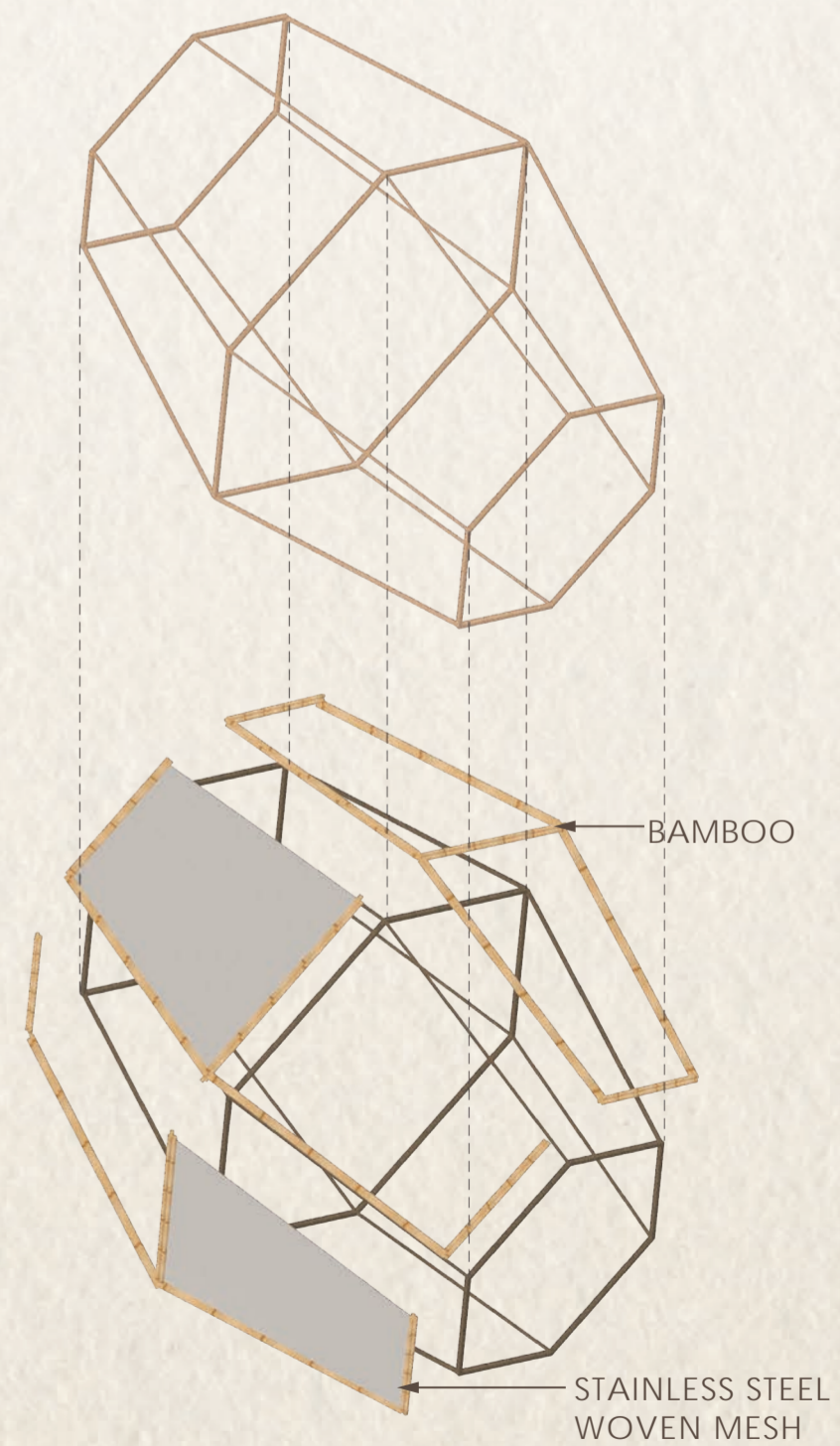
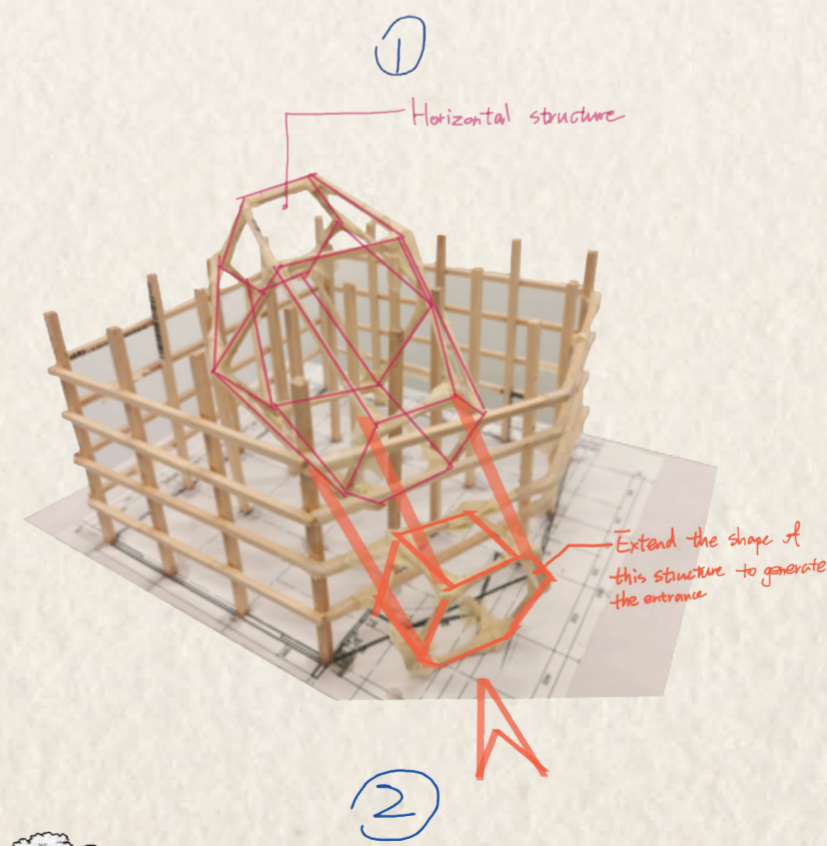
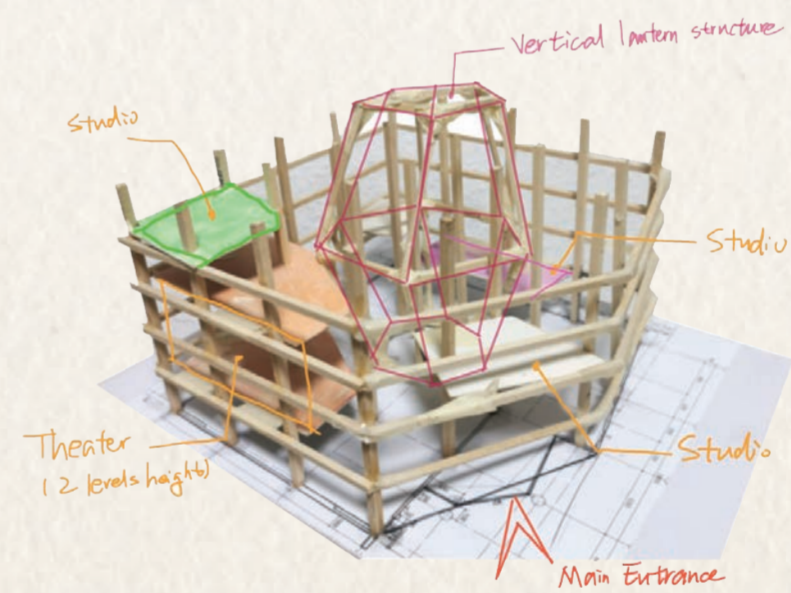
1F

- RECEPTION
- VELVET FLOWER EXHIBITION
- QINHUI LANTERN EXHIBITION
- YUNJIN EXHIBITION
- FOLDING FAN EXHIBITION
- FOLKLORE EXHIBITION



THE BAMBOO STRUCTURE

Taking inspiration from the intricate inner workings of Chinese lanterns, the structure incorporates a hexagonal bamboo framework. This framework, reminiscent of lanterns, not only acts as a vertical focal point but also provides guidance to users as they move within the building. By integrating this graceful framework, the design enriches both vertical and horizontal visual connections, resulting in an elevated aesthetic appeal.



SECTION A-A

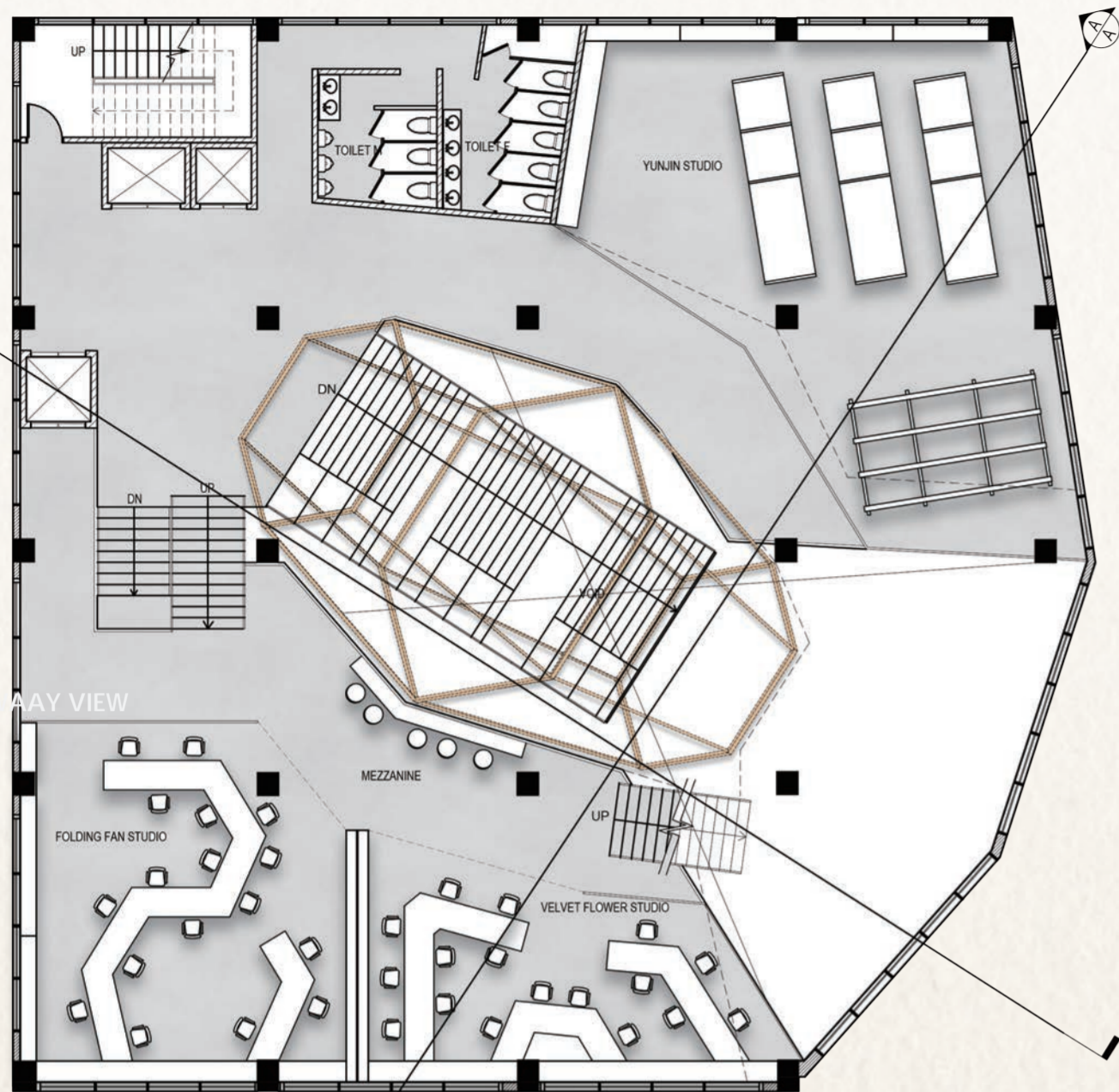


SECTION B-B

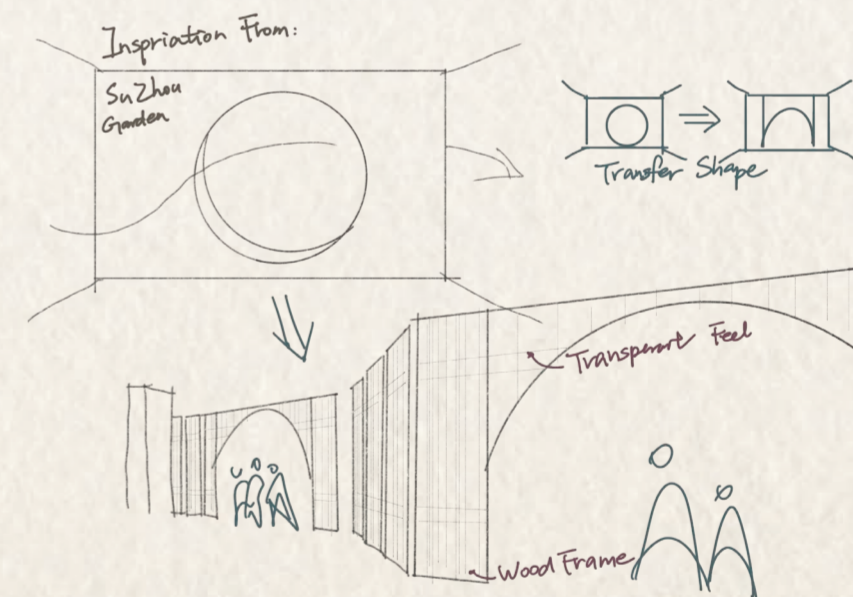


2F

- YUNJIN STUDIO
- FOLDING FAN STUDIO
- VELVET FLOWER STUDIO



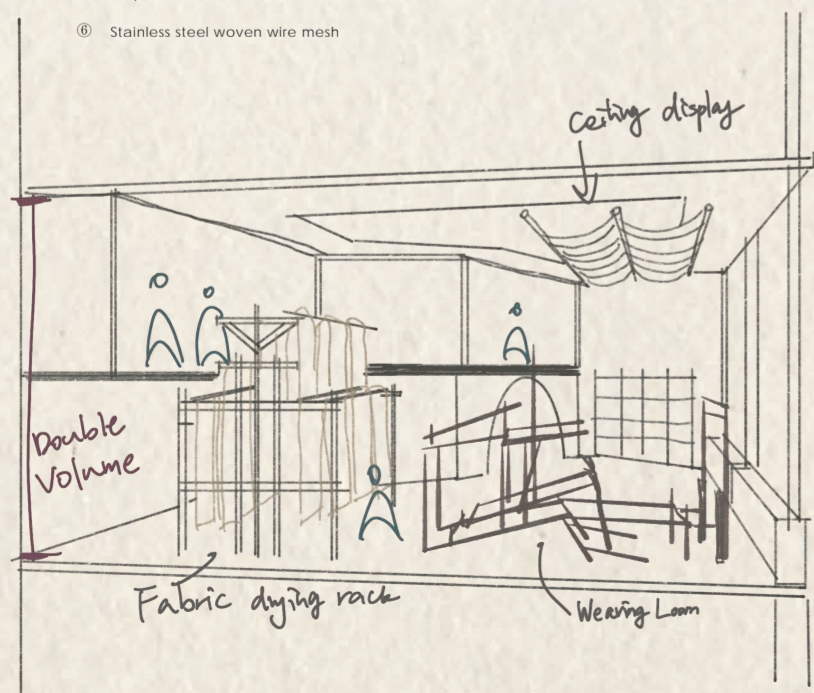
FOLDING FAN STUDIO



MATERIAL BOARD



- ① Bamboo laminate
- ② Perforated bluestone slab
- ③ Light brown matte lacquer finish
- ④ Imitation stone embossed floor finish
- ⑤ Maple wood veneer
- ⑥ Stainless steel woven wire mesh
- ⑦ Light-colored terrazzo tile
- ⑧ Rattan net
- ⑨ Lake blue matte lacquer finish
- ⑩ Golden stainless steel
- ⑪ Vermillion matte lacquer finish



YUNJIN STUDIO

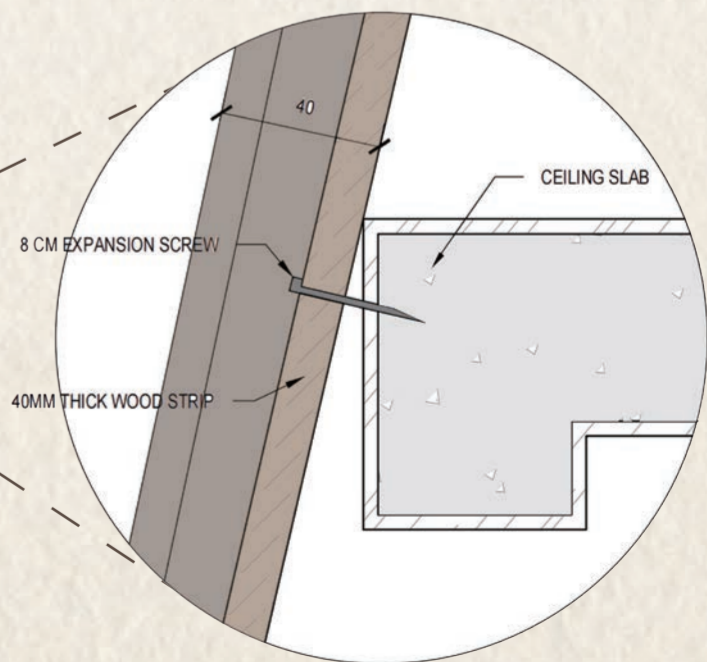
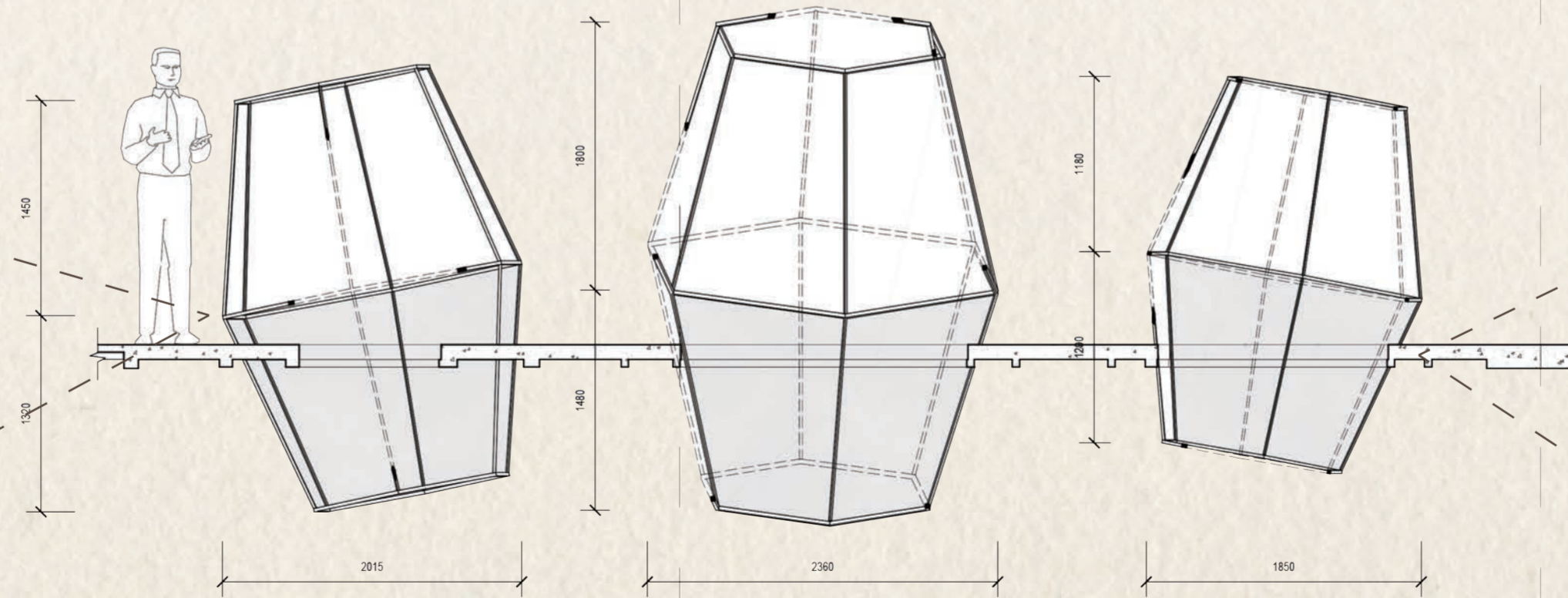
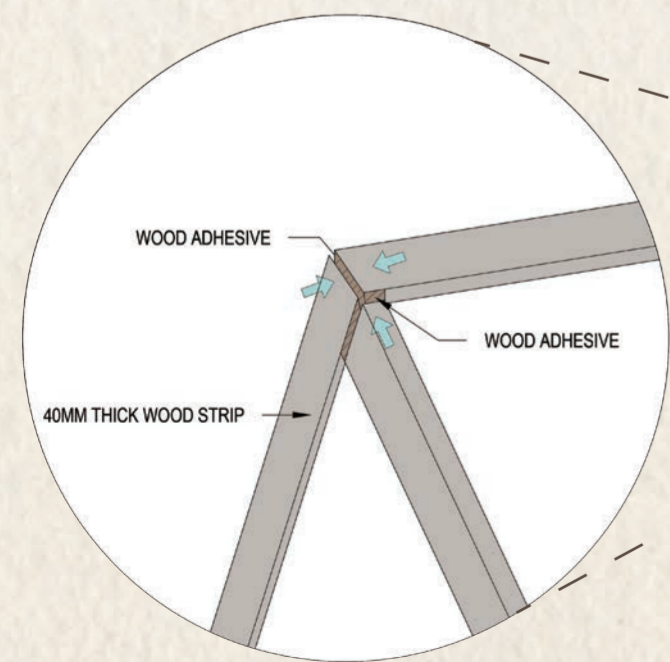
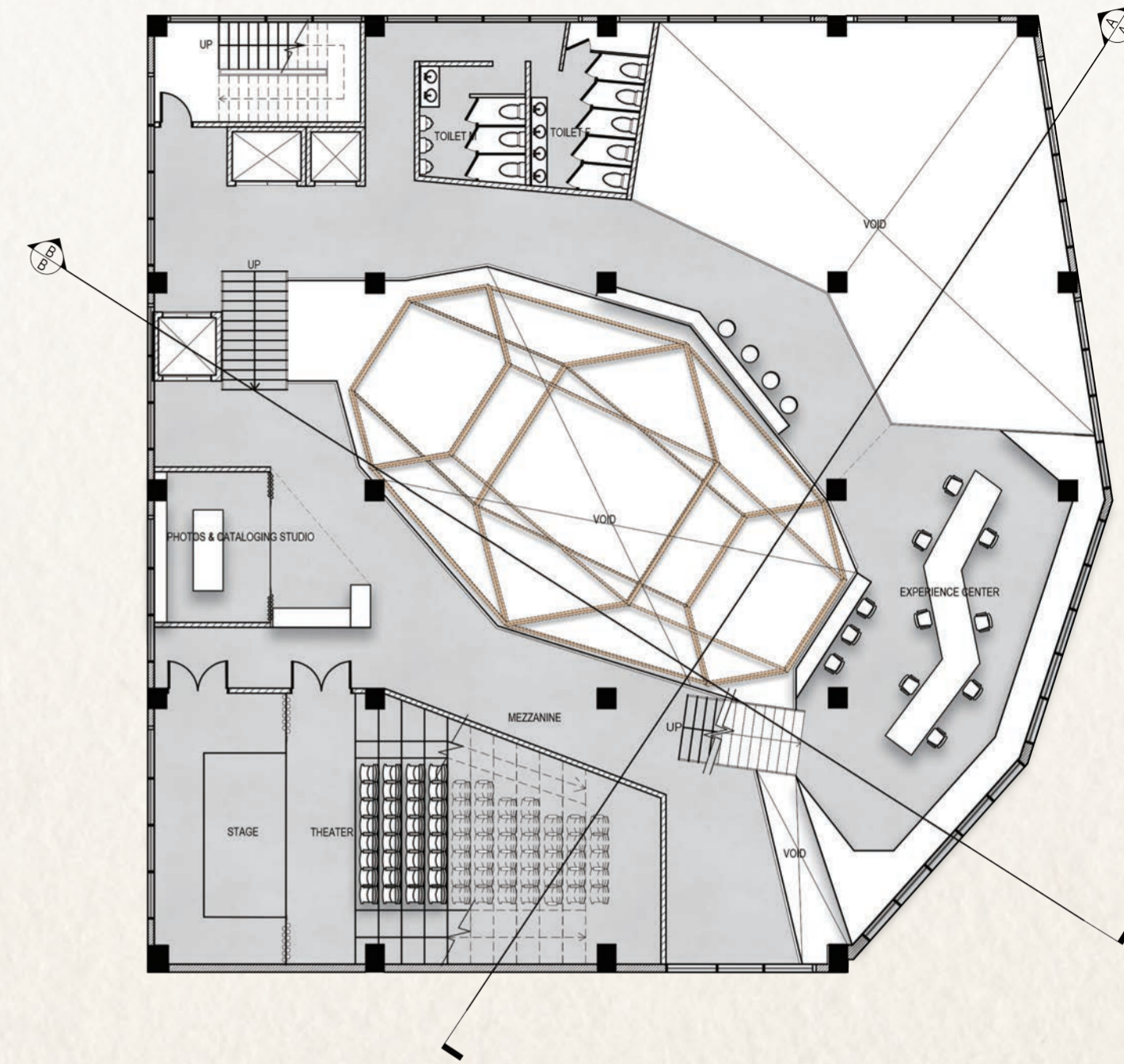




EXPERIENCE CENTER

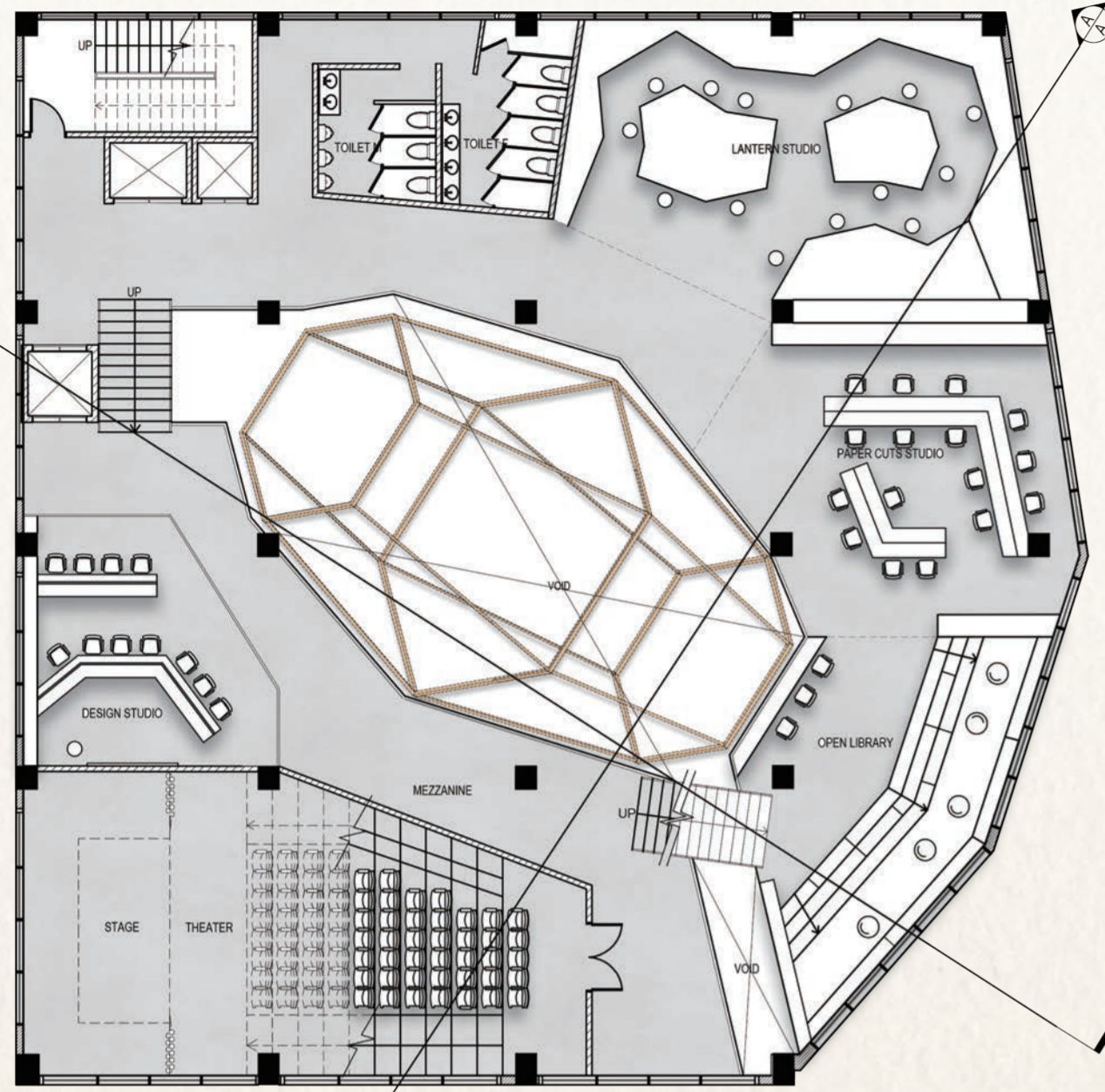
3F

- EXPERIENCE CENTER
- YUNJIN STUDIO
- PHOTOS&CATALOGING STUDIO
- THEATER



4F

- LANTERN STUDIO
- PAPER CUTS STUDIO
- OPEN LIBRARY
- DESIGN STUDIO
- THRATER



LANTERN STUDIO

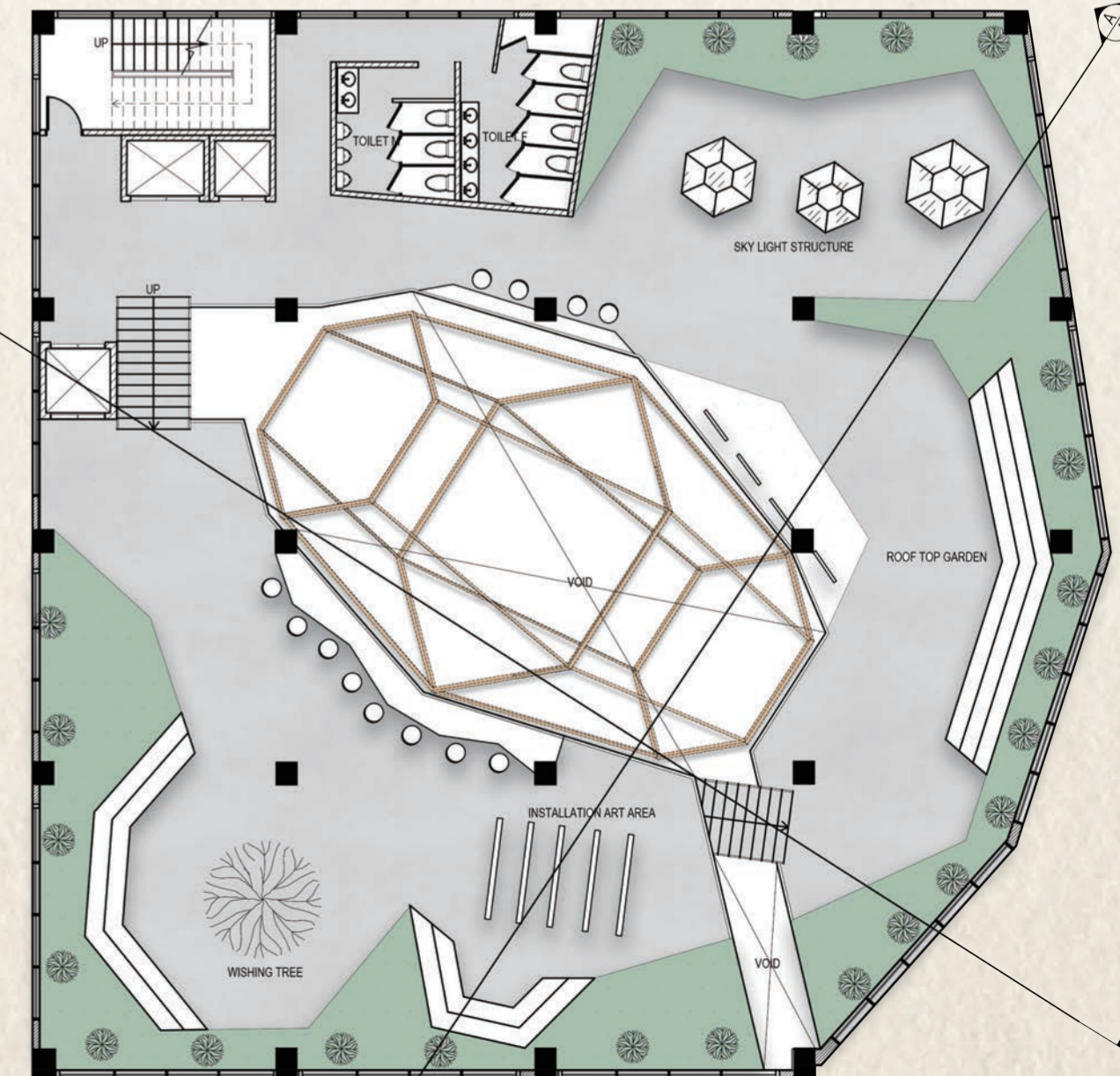
TO VIEW VIDEO USE QR CODE



ROOF GARDEN

RG

- ROOF TOP GARDEN
- REST AREA
- SKY LIGHT STRUCTURE



PAPER CUT STUDIO



OPEN LIBRARY