

# LetSlash

Youth unemployment is an increasingly urgent issue affecting numerous countries, including China. In order to navigate the constantly evolving job market, young individuals must cultivate innovative career strategies while also embracing sustainability.

LetSlash, a neuroarchitecture-designed career hub located in China, plays a vital role in supporting Generation Z as they explore diverse career paths. The structure itself incorporates sustainable design principles, placing a strong emphasis on maximizing natural light, optimizing airflow and use of sustainable materials to promote well-being of the users.

By serving as an exemplar of sustainable building practices, LetSlash not only inspires but also empowers the younger generation to actively tackle pressing global concerns such as climate change, energy efficiency, resource conservation, and biodiversity preservation. Moreover, it serves as a catalyst for personal and professional growth among the youth, fostering their development on multiple fronts.

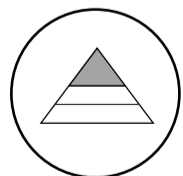


## Background

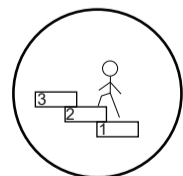
The youth, who graduated from college, are having harder time looking for jobs. One of the reasons could be the mismatch of knowledge and skills. But also, rapid electronic technology development is having huge impact of workplace and employment. To break the ice, young people need to conceive of the workplace in a different way, also they need to perceive and plan their career path with a new perspective.

## Users

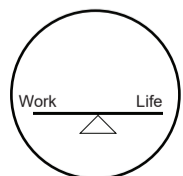
### Generation Z



Emphasizing desires over necessities, showcasing value and specialization.



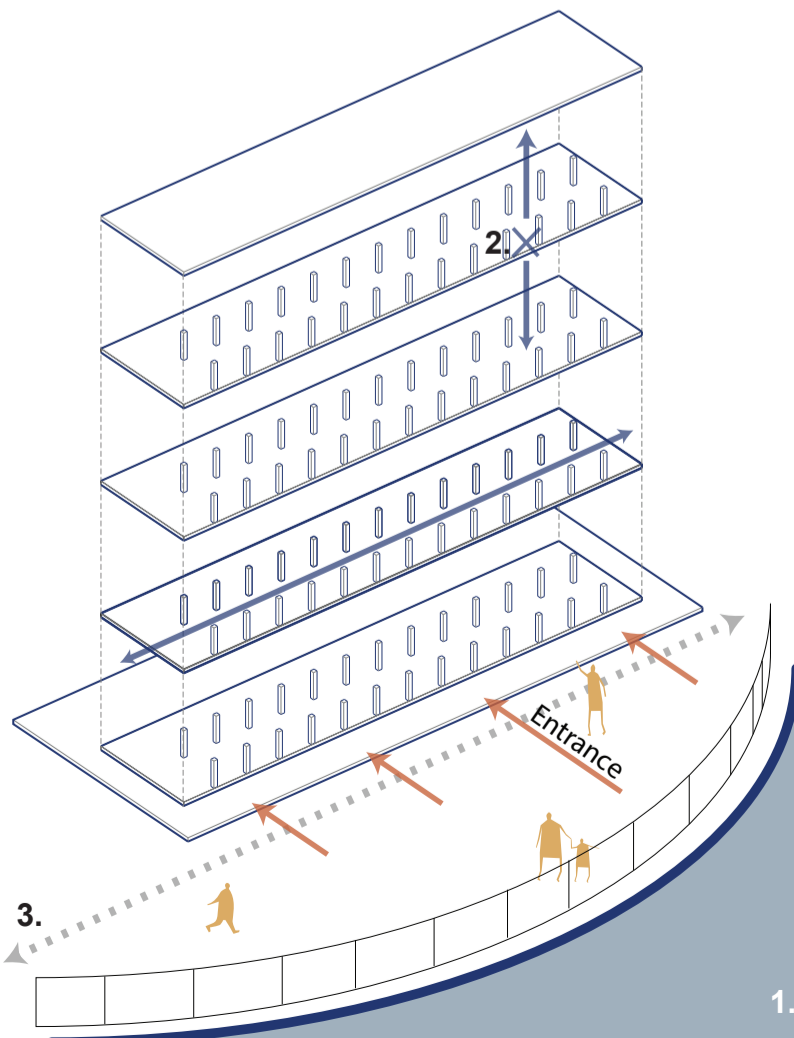
Prioritize self-satisfaction and fulfillment as their new work values and motivations.



Balancing diverse interests and passions to integrate joy, work, and fulfillment in lives.

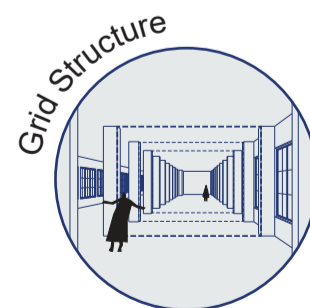
## Site Analysis

Wuyang Bicycle Factory @ Guangdong, China



- Neighbor
- Interior Features
- Spatial Relationship
- ⋯ Traffic

1. River View in the front
2. Lacking Vertical Connection
3. Car, Bicycle Bus

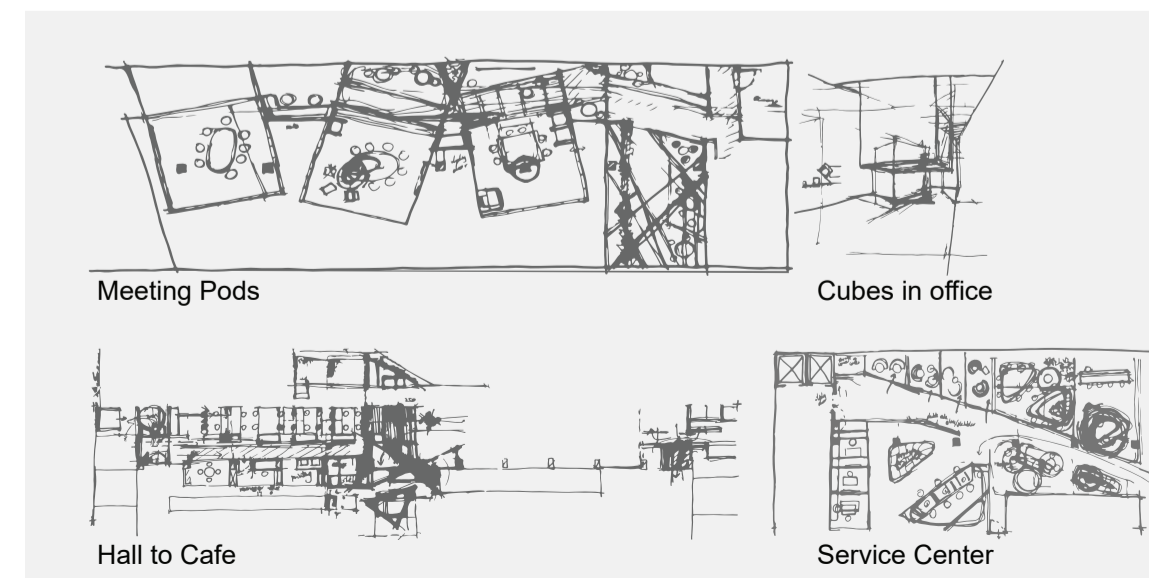


## Concept

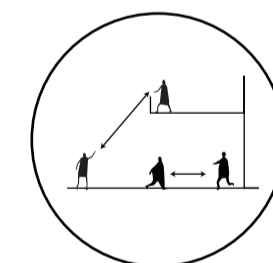
### Activator

As incubator is a space for start-up business to growth, Activator is a space to activate multi senses and social activities which encourage the youth to build interpersonal relationships. Through enriching the spatial experience inspired by neuroarchitecture design, activator aims to improve brain functionality and performance in learning and work skills.

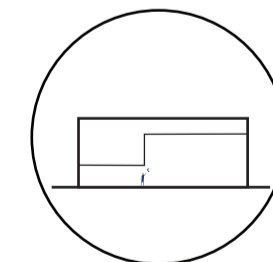
## Design Process



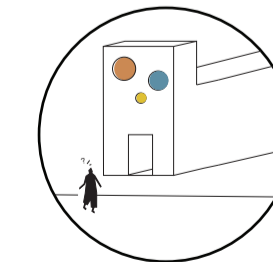
## Design Strategy



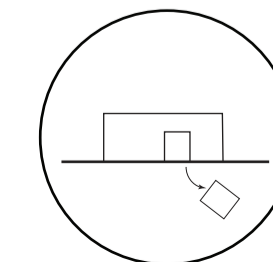
**1 Interaction**  
Encourage active participation, collaboration, and enhanced neural connectivity.



**2 Contrast of Scale**  
Reinforcing brain stimulation affect which triggers more thinking and learning experience.

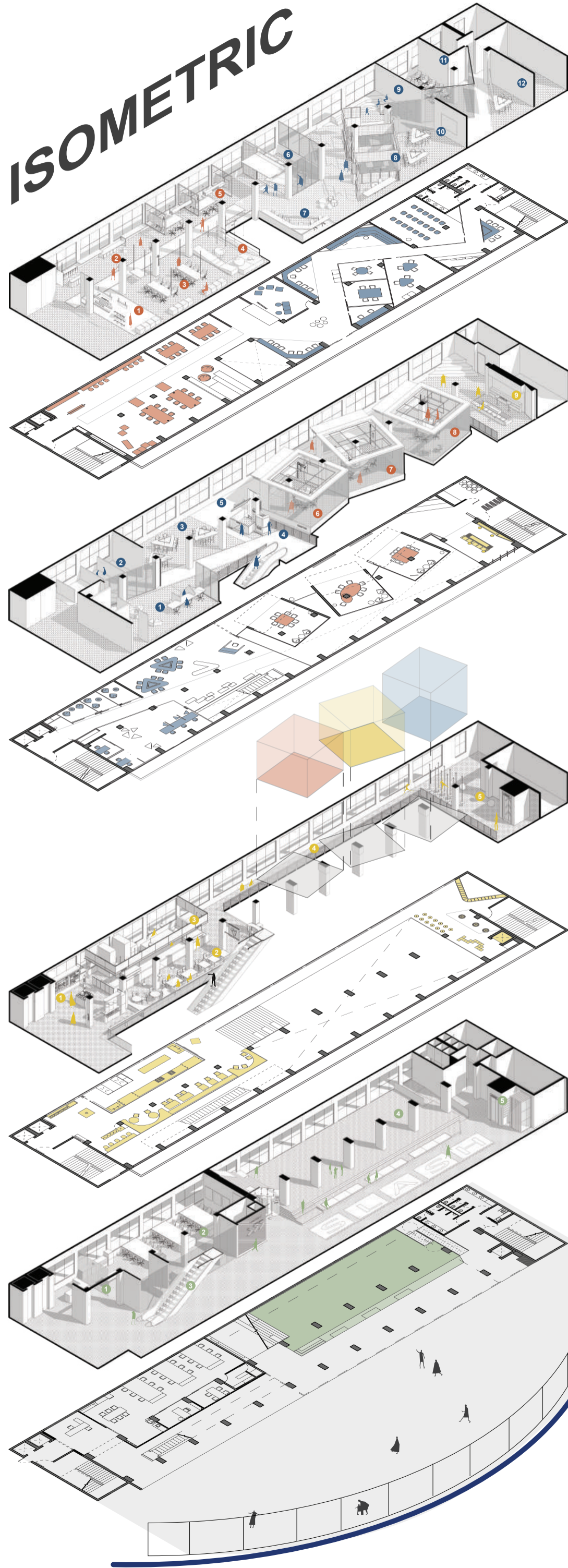


**3 Exploration**  
Challenge sight limitation to provide constants stimulation.



**4 Create Atrium**  
Natural lights exposure. Improve the overall well-being, comfort, and work performance.

# ISOMETRIC



## 4F

1. Activator wall
2. Corridor
3. Common working
4. Fun working zone
5. Discussion zone
6. Workshop room
7. Individual working table
8. Group working zone
9. Meeting spot
10. Class room A
11. Class room B
12. Working table

## 3F

1. Career service center
2. Mentor meeting zone
3. Lounge
4. Lobby
5. Flexible corridor
6. Pod passion
7. Pod future
8. Pod innovation
9. Refreshing zone

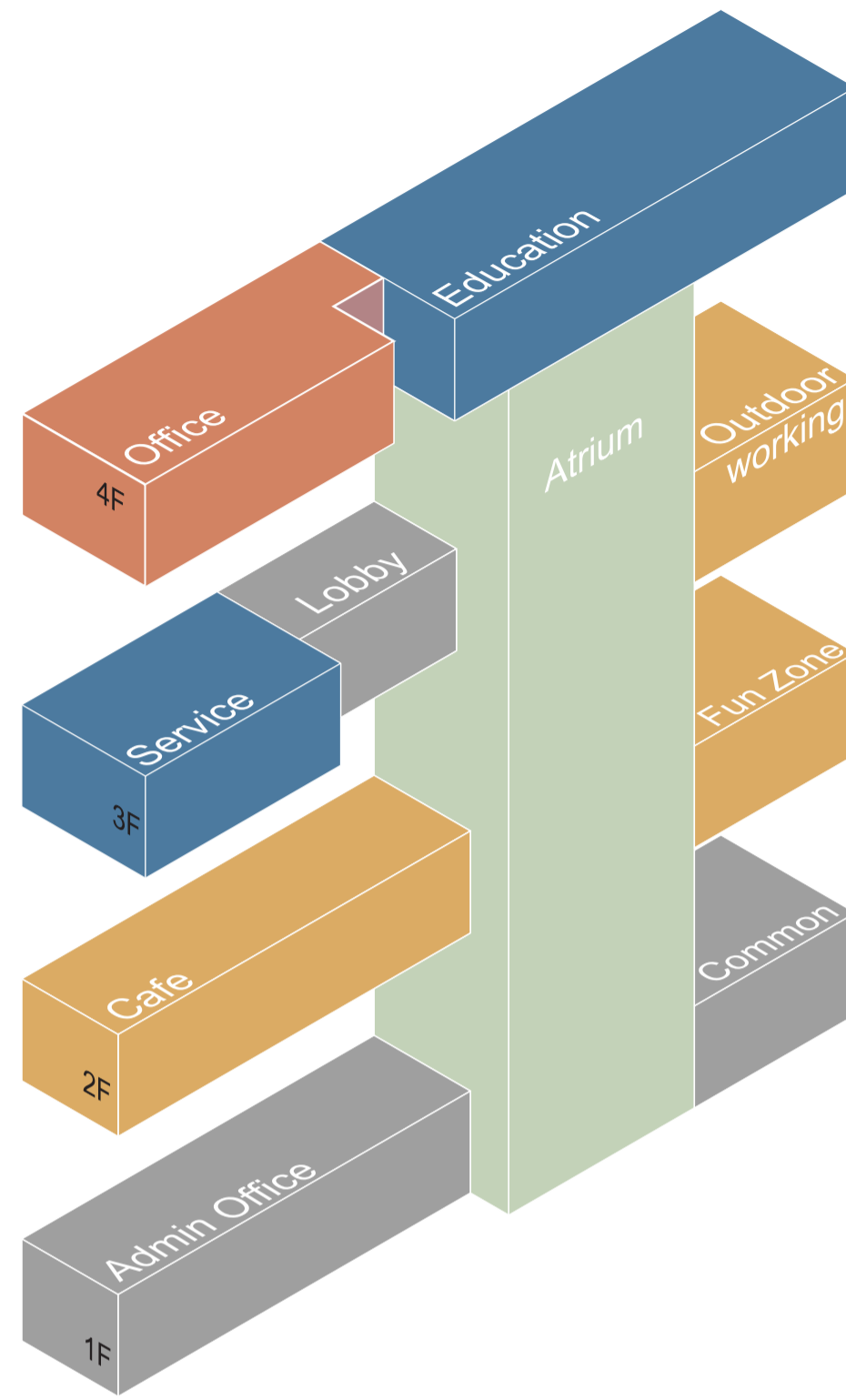
## 2F

1. Grab & Go corner
2. Common dining
3. Kitchen
4. Viewing corridor
5. Playground

## 1F

1. Enquiry Counter
2. Admin Office
3. Exploration sscalator
4. Community plaza
5. Playground lift

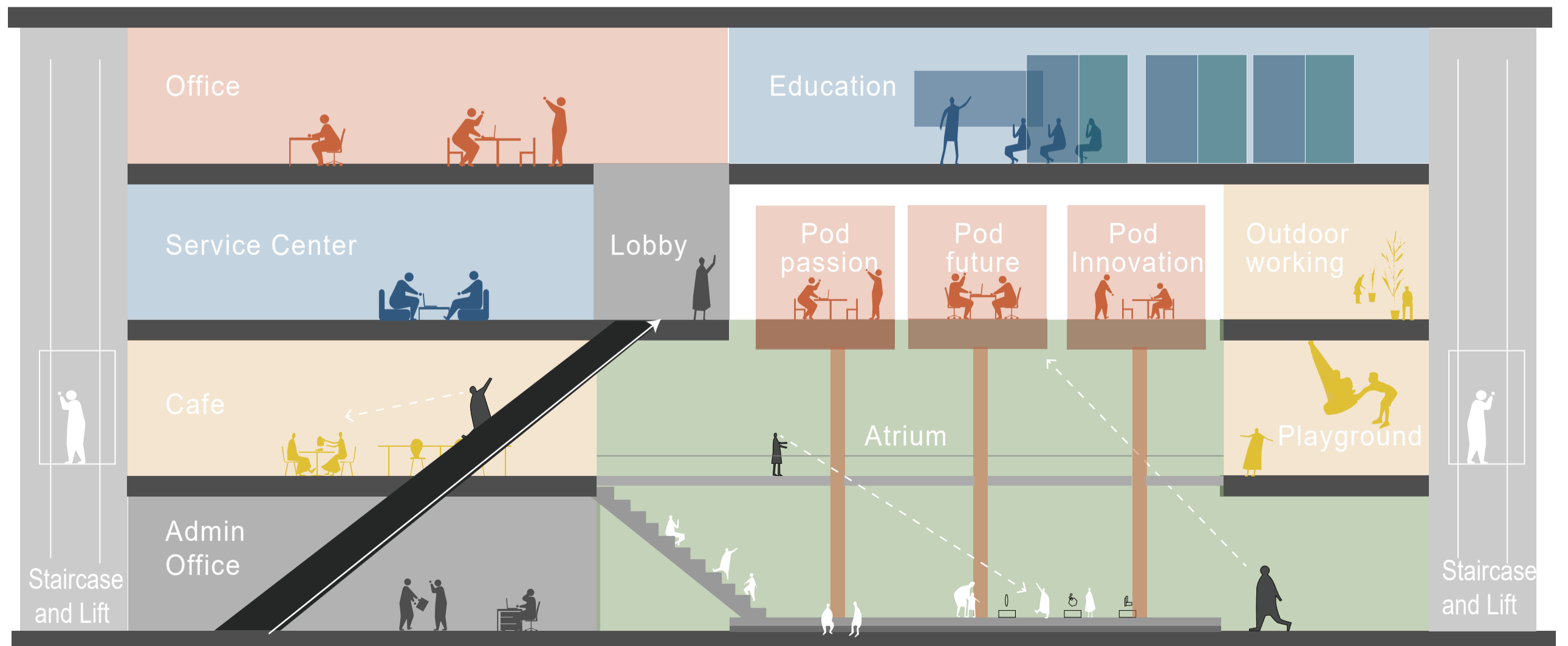
## Volumetric Design



## Programme

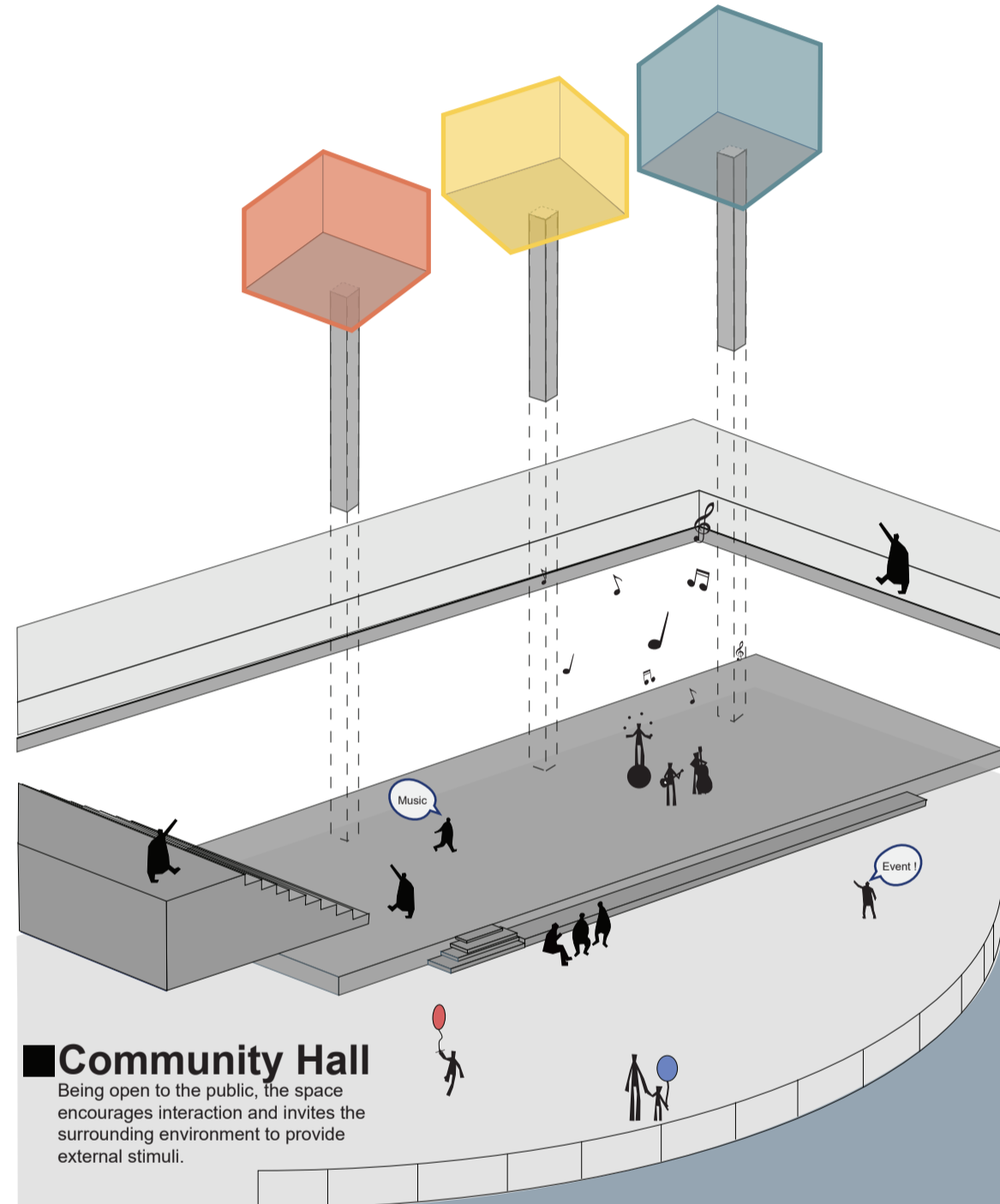
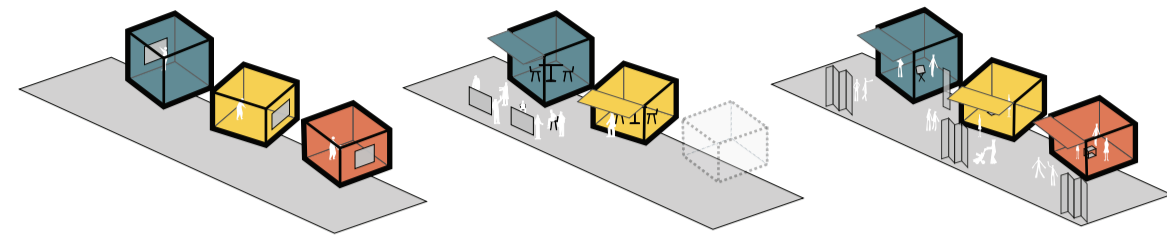


## Spatial Relationship



## User Scenario

- 1. Individual Pods**  
Promise for privacy and concentration.
- 2. Sharing Pods**  
Combined rooms and corridors for small sharing seminars.
- 3. Public Pods**  
Three rooms open to the public and serve as exhibition zones.



**Community Hall**  
Being open to the public, the space encourages interaction and invites the surrounding environment to provide external stimuli.

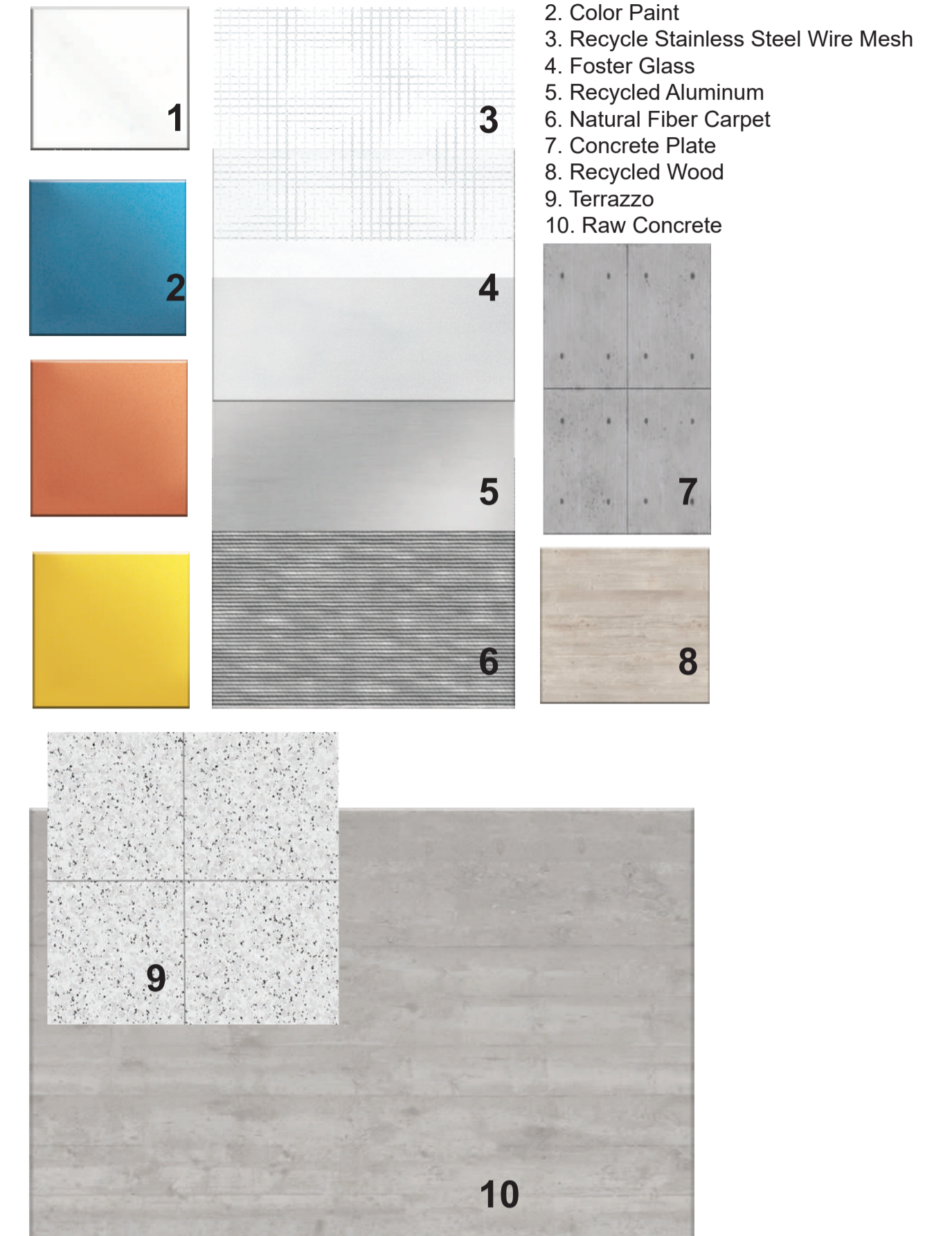


Entrance of Pods



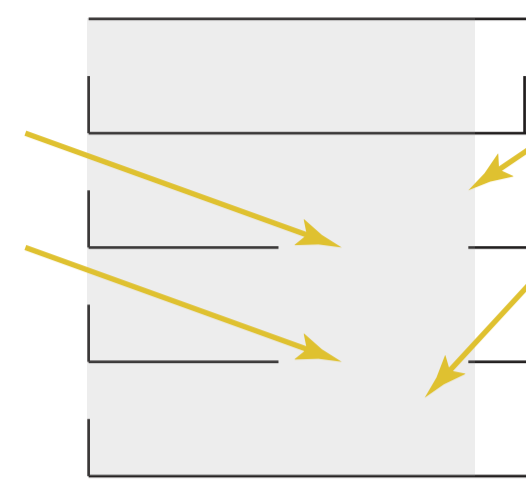
Refreshing Zone

## Material



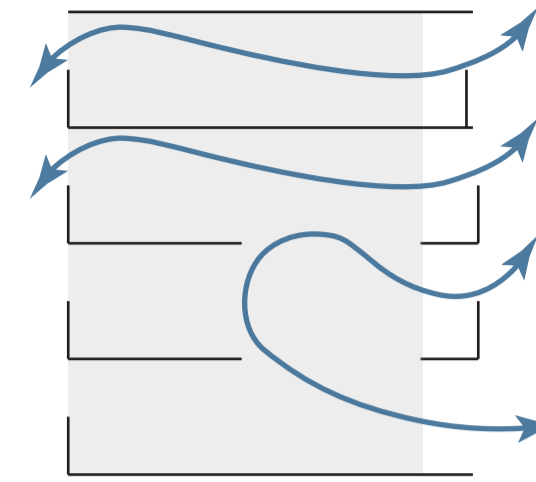
Entrance of Pods

## ■ Sustainability and Neuroarchitecture



### Natural Light Exposure

1. Maximize natural light exposure enhance sustainability and energy efficiency. Also promote well-being and cognitive performance.



### Natural Air Flow

2. Allow natural airflow. Promote air quality and occupant comfort, also contribute to stress reduction and mental well-being.



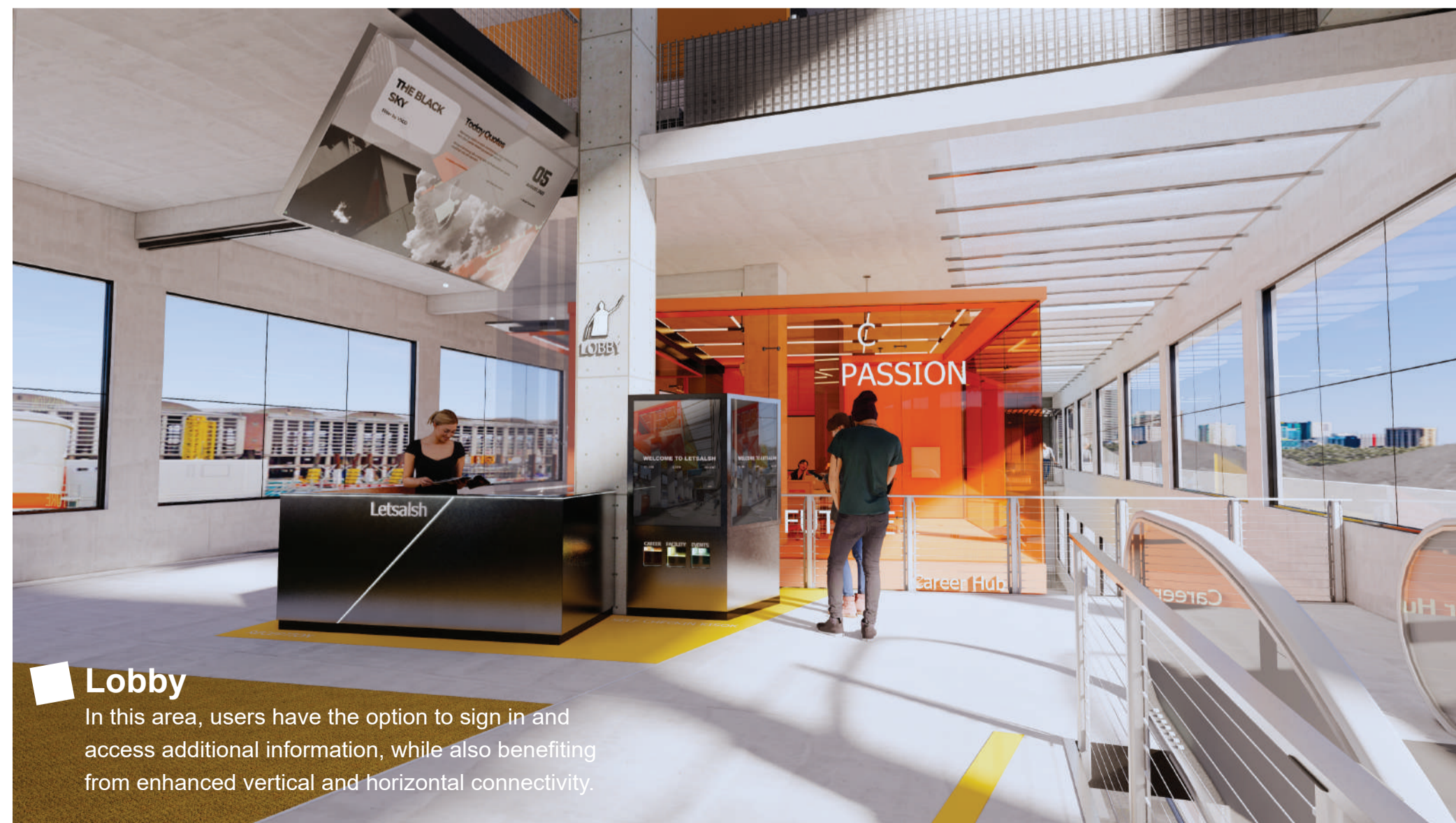
### Office

Geometric shapes create a dynamic sense of movement, leading users to perceive and interact with the space in new ways.



### Cafe

Boldly applied colors simultaneously create contrast and stimulate users' well-being and behavior.



### Lobby

In this area, users have the option to sign in and access additional information, while also benefiting from enhanced vertical and horizontal connectivity.



### Hall Stage

The hall stage connects the community hall and cafe, fostering social interaction, while also allowing ample fresh air and breeze to flow through the building.



Activator Wall



Cafe Entrance



Lobby



Refresh Zone



PlayGround



Reflective Journal

