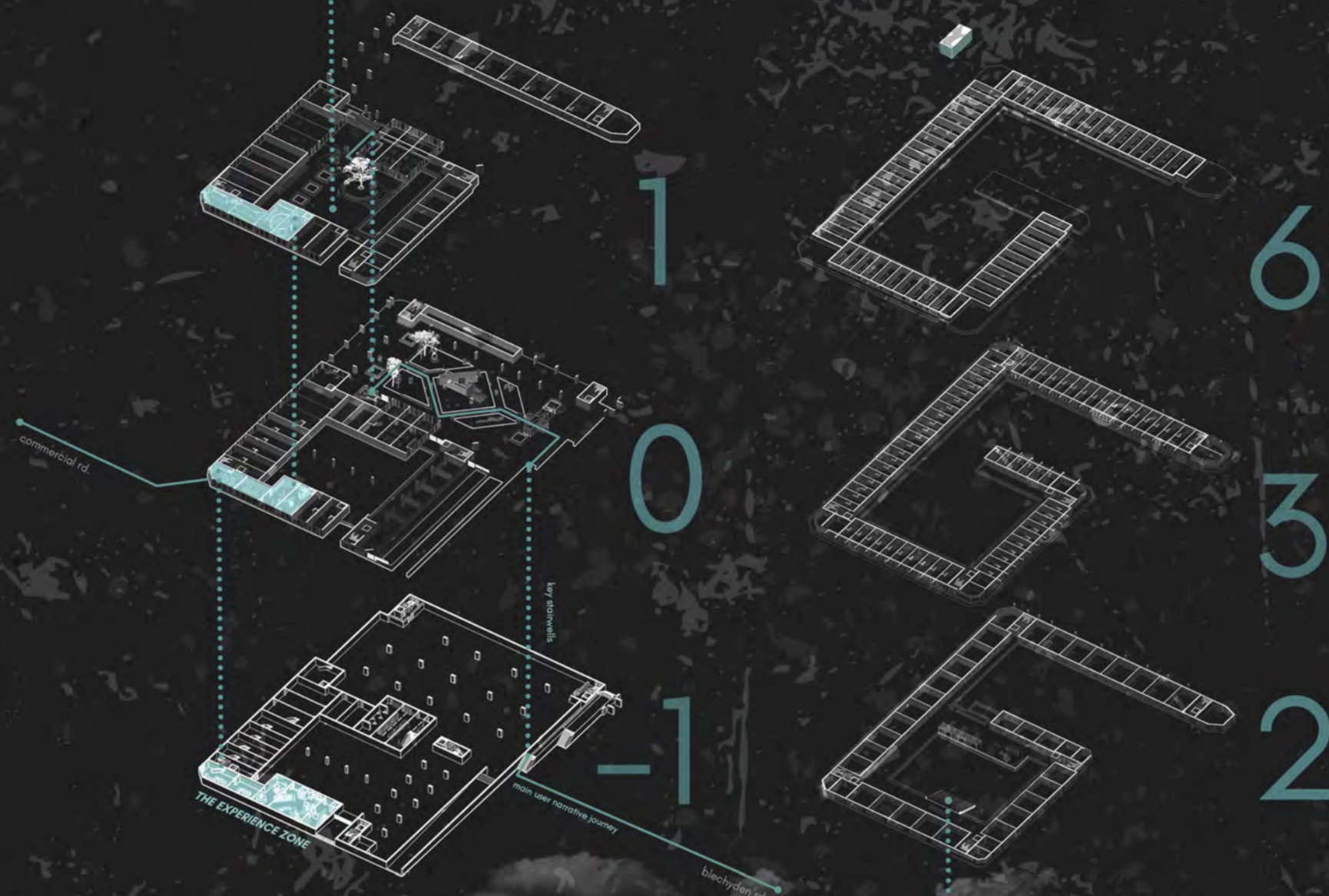


REINVENTING THE MIKRORAYON

CONCRETISED

COMMUNITIES.

CONCRETISED COMMUNITIES, a revitalisation project centred at Wyndham Court in Southampton is a community-focused initiative that rejuvenates the area by integrating sustainable living with innovative participatory design. Drawing inspiration from the principles of Soviet microdistricts – participation, connections, and communality – the scheme aims to create a modern communal environment in Southampton. It features green and inviting redesigned public spaces like central courtyards and gardens, communal areas, and mosaic maker spaces that facilitate deeper connections with Southamptons artistic heritage and its varied demographic users. Through this, the design blends Southampton's rich historical and cultural elements with contemporary functionalities, emphasising human-computer interactions (HCI) to showcase the potential of local artists and enrich user experiences and connections with residents.



CREATE.



EXPERIENCE.

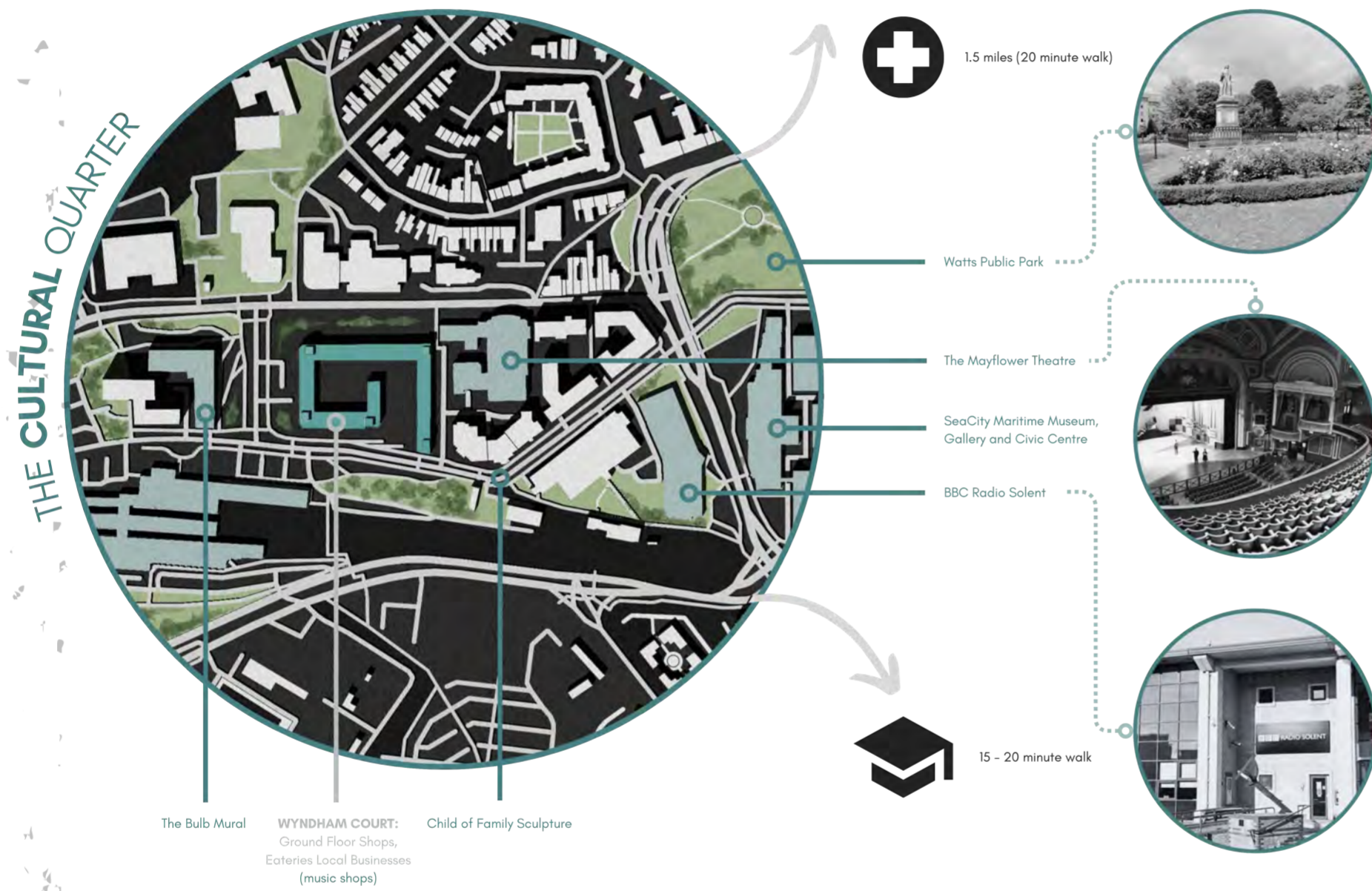


CONNECT.



THE CITY

THE ESSENCE OF SOUTHAMPTON
NARRATIVE JOURNEY, CONNECTIONS AND INTANGIBLE THREADS

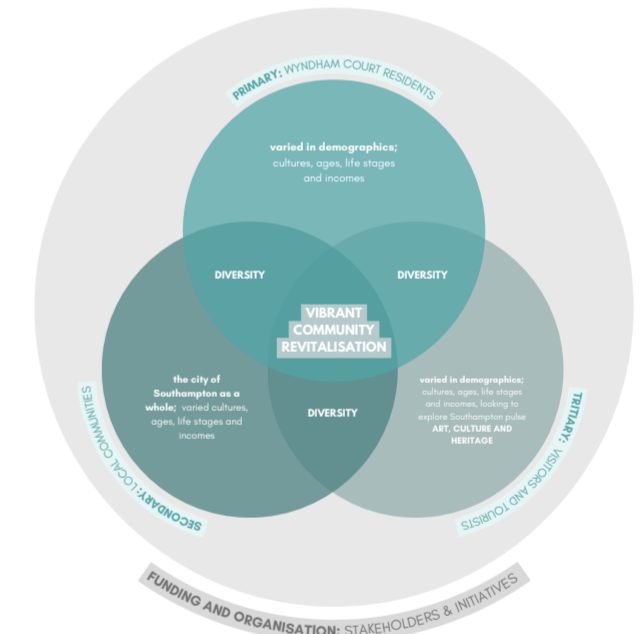


“Some residents moved in just days before being interviewed, others have lived there for decades. They represent a microcosm of contemporary Britain, in all its diversity and complexity.”
- Rachael Adams



THE ESSENCE

To improve the quality of social life of residents as well as destigmatise council estates and brutalist buildings due to their appearance and negative historical connotations, **heritage preservation and communal public space reinvigoration** is essential for boosting user engagement, socialisation and interaction. Users can utilise revitalised spaces to feel comfortable, build trustworthy bonds, tackle isolation and revitalise their own community through this collaborative process. Emphasising the varied resident demographic in a personal way helps connect users to one another, as well as to visitors which can help fund the maintenance of the building, portraying the **regenerative ecosystem** element of the scheme.



The Jane Austen trail



Southampton City Art Gallery and Library



The Mayflower Theatre



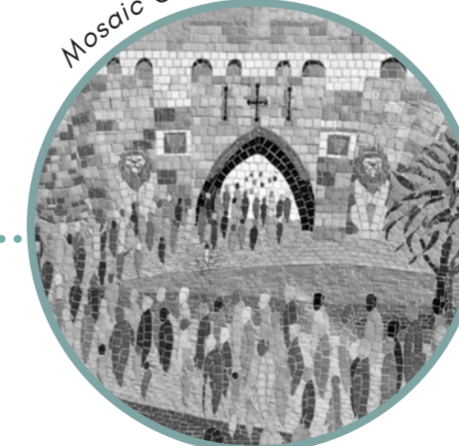
Street/Mural Art



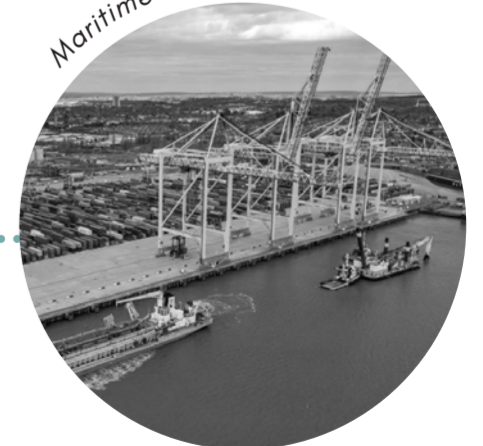
'Child of Family' Sculpture



Mosaic Creation



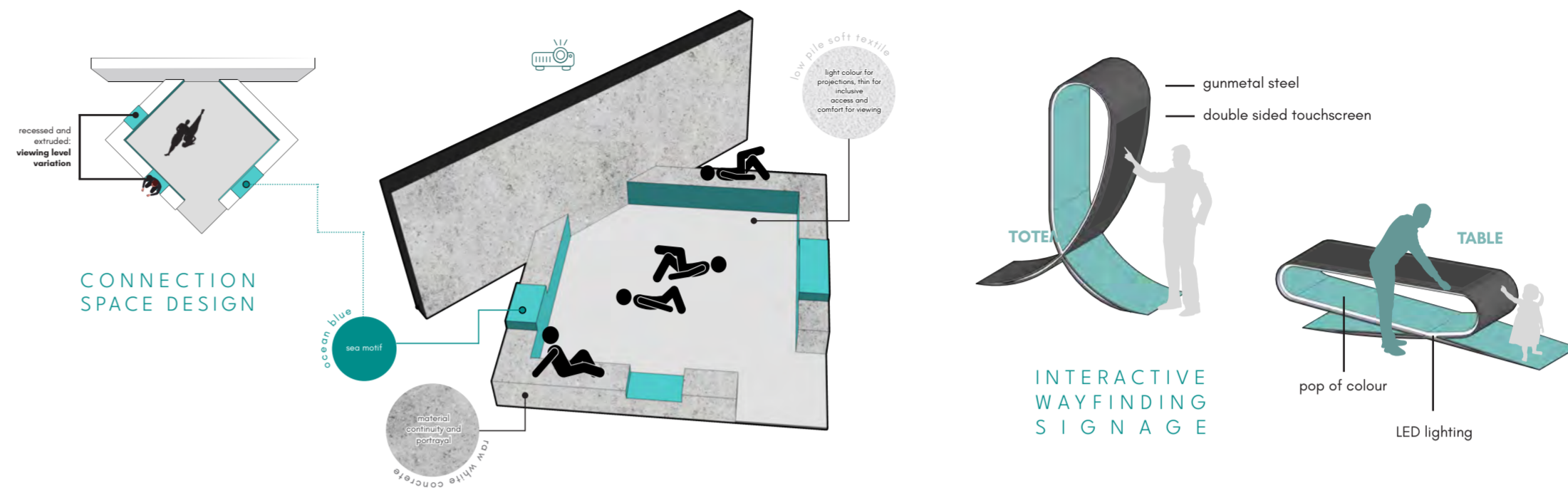
Maritime Industry



THE MICRO

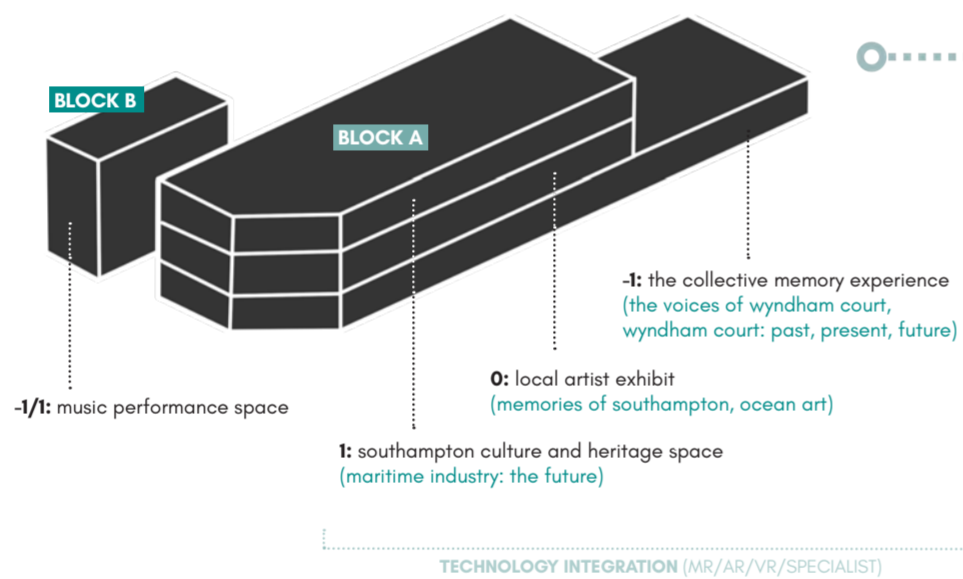
ZONE AND FUNCTION SPECIFICS

DESIGN AND OPERATION

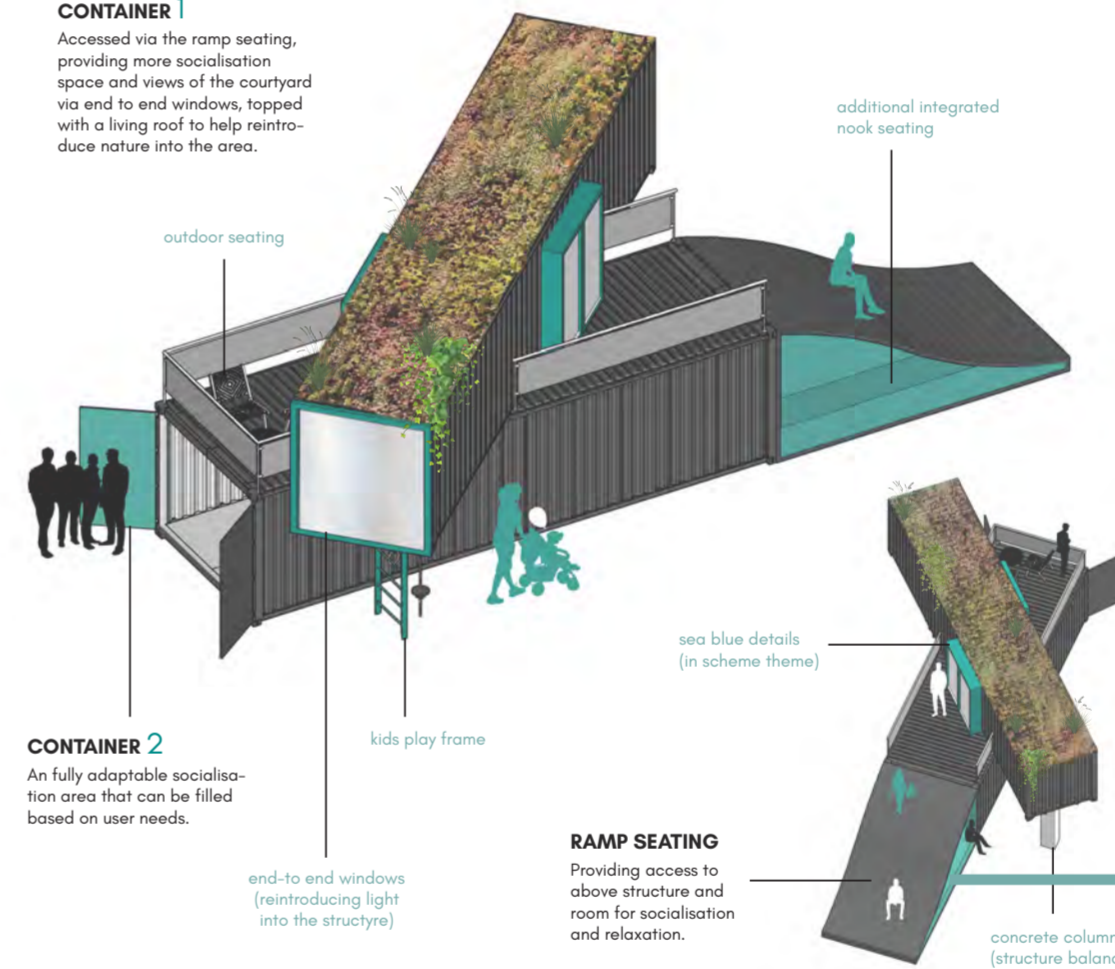


1

THE EXPERIENCE ZONE: THE SENSES



CONTAINER 1
Accessed via the ramp seating, providing more socialisation space and views of the courtyard via end to end windows, topped with a living roof to help reintroduce nature into the area.

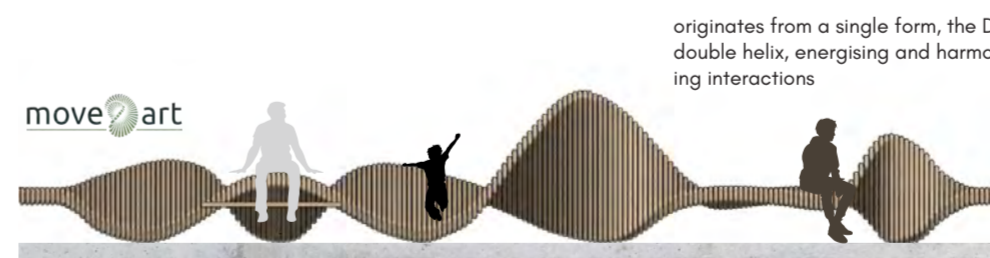
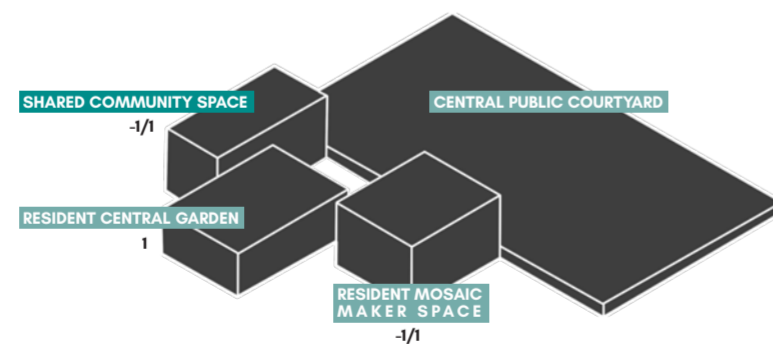


PHYSICAL WAYFINDING PATH

guides user through floor markings resembling mosaic tiles, aiding their traditional and routine ritual journey.

2

THE PARTICIPATORY ZONE: THE COLLECTIVE



PLAYFUL & ENGAGING SEATING

FOREST OF MEMORIES HERITAGE TRAIL



JANE AUSTEN LYON ISRAEL ELIUS COMMUNITY

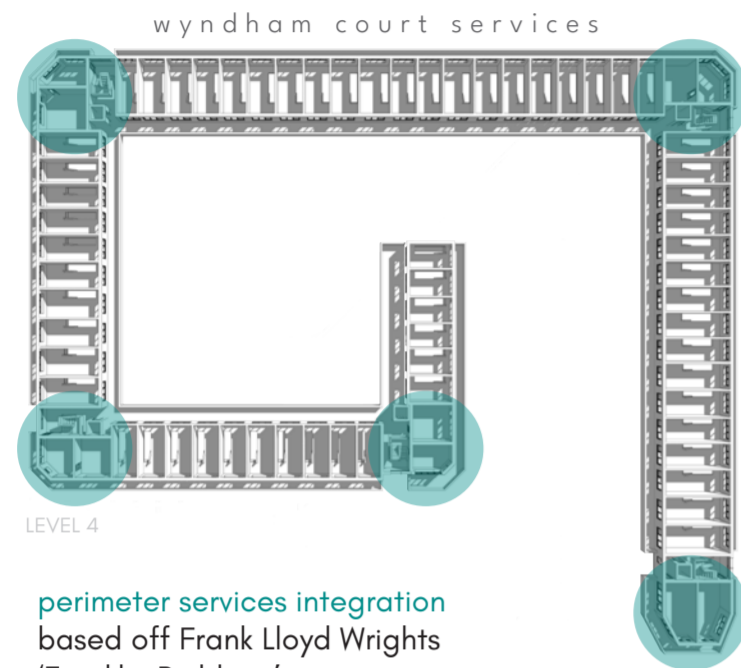
HERITAGE INTEGRATION
based on the precedent under the same name, a heritage attraction named features illuminated wall light boxes. These boxes, crafted from perforated steel in a 'pic-pole' style, display historic figures and real residents from the area. The design allows light to pass through, enhancing visibility both day and night.

THE INTERVENTIONS

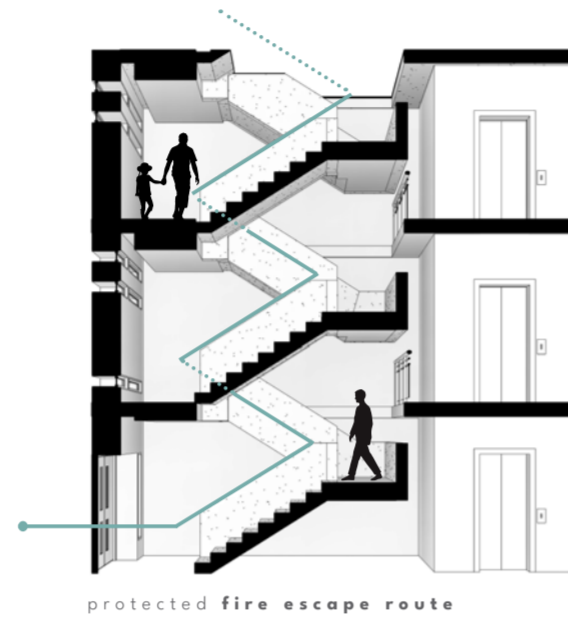
A showcase of the communal interventions created and revitalised at Wyndham Court for increased user socialisation, connection and collaboration.

REGULATION & LEGISLATION

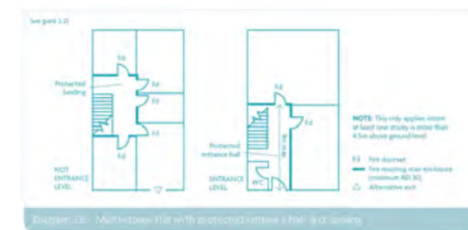
Due to the grade II listed status of the building, the regulations and legislations adherence was particularly important for user safety.



PART B: FIRE SAFETY

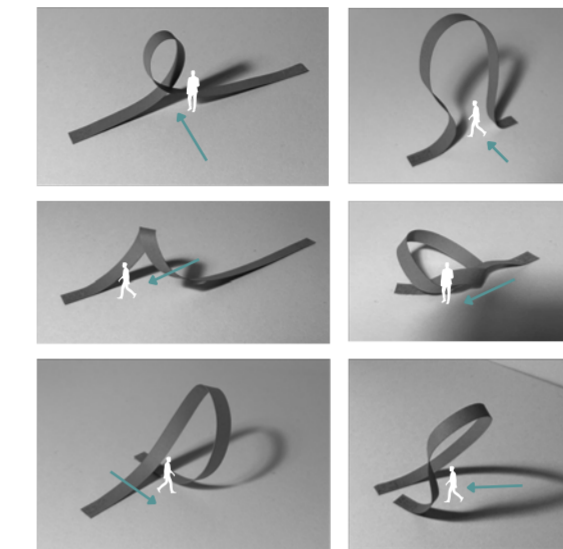


COMPARTMENTALISATION & ESCAPE ROUTE DISTANCES of corridors, stairwells and large open void spaces particularly important due to the scale, age, listing status and multiple access ways of the building.



FINDING THE LINE

based on this modelmaking exercise, the unique and fluid shapes created mimic that of waves and aid user flow and engaging narrative through interactive touch screen systems

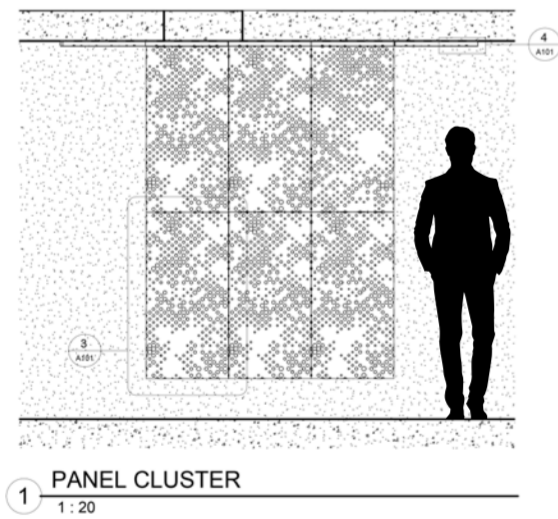


MODELMAKING EXPERIMENTS

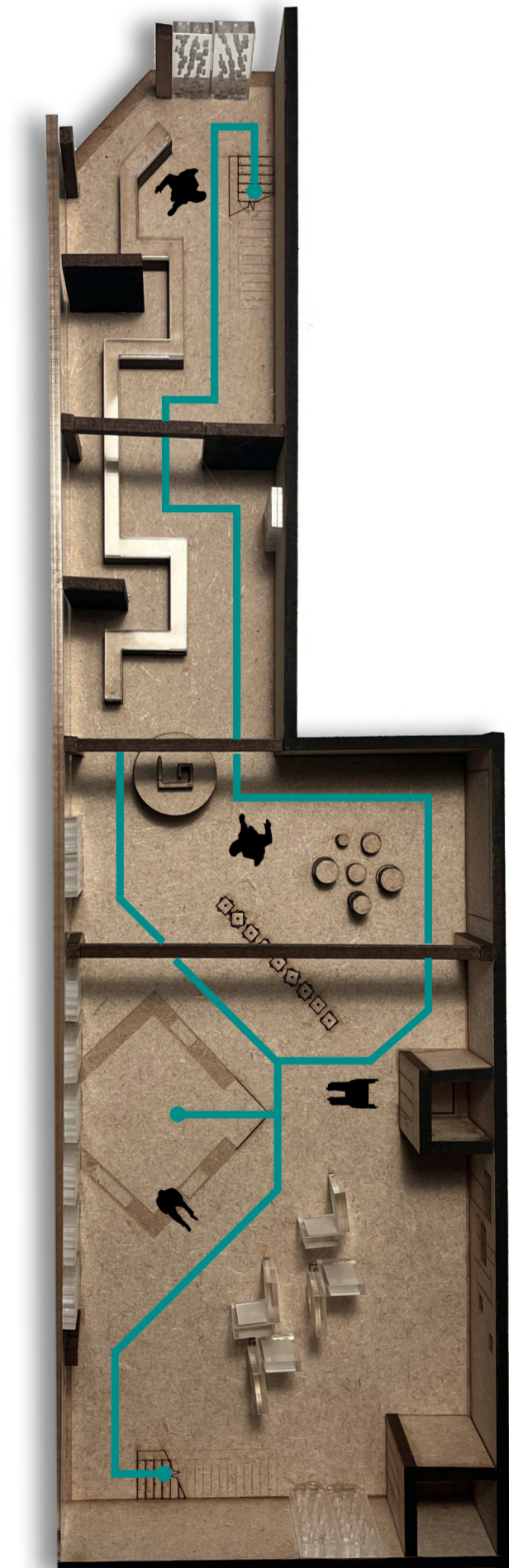
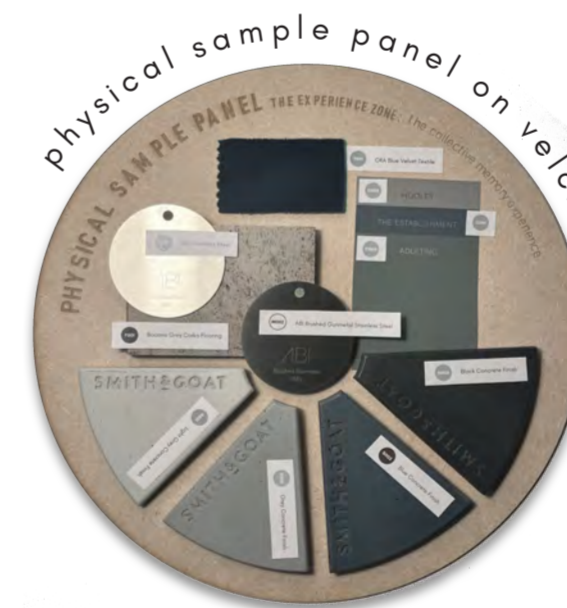
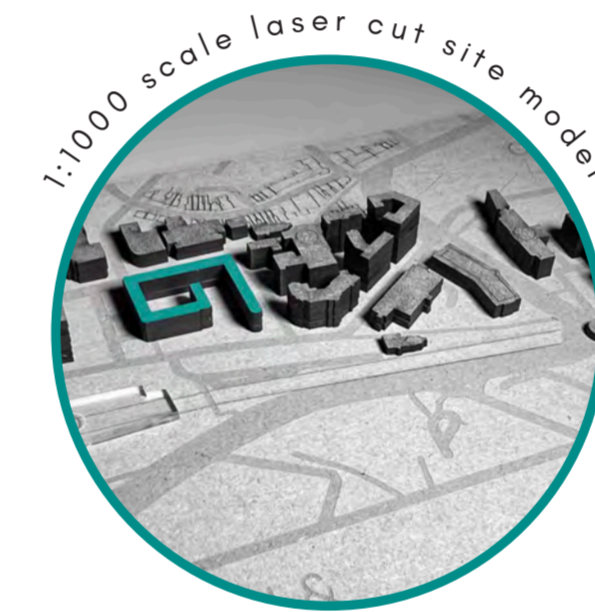
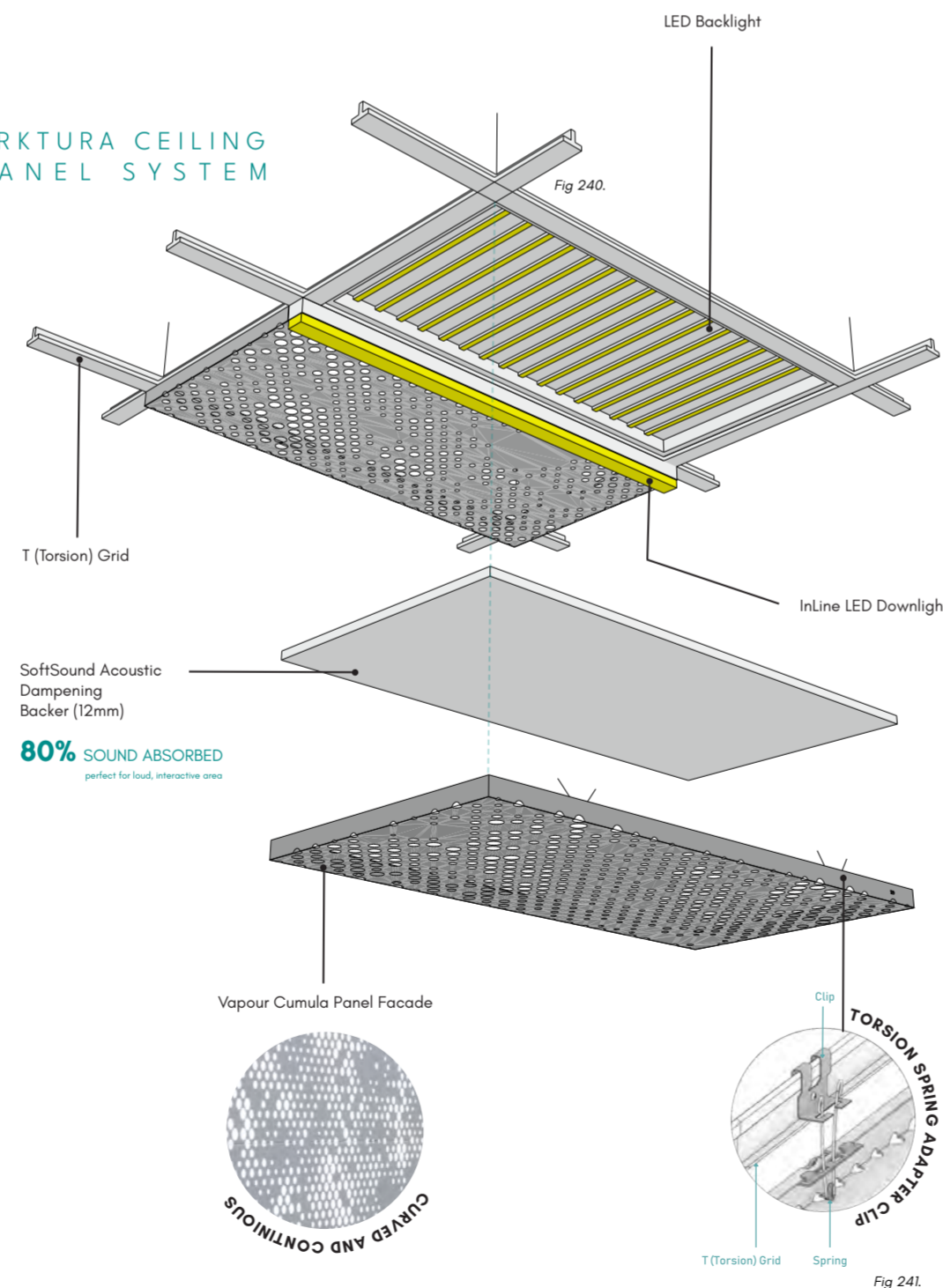
In line with personal and professional goals, modelmaking exploration ranging from abstract to scale was iterated to help me develop skills with Adobe Illustrator, laser cutting machinery and detail precision.

TECHNICAL REVIEW

The collective memory experience located in the basement of the building was developed into a detailed area, complete with light plans, scale model, physical sample panel and detail drawings of lighting and custom seating components.



ARKTURA CEILING PANEL SYSTEM



detailed area (1:100)

