

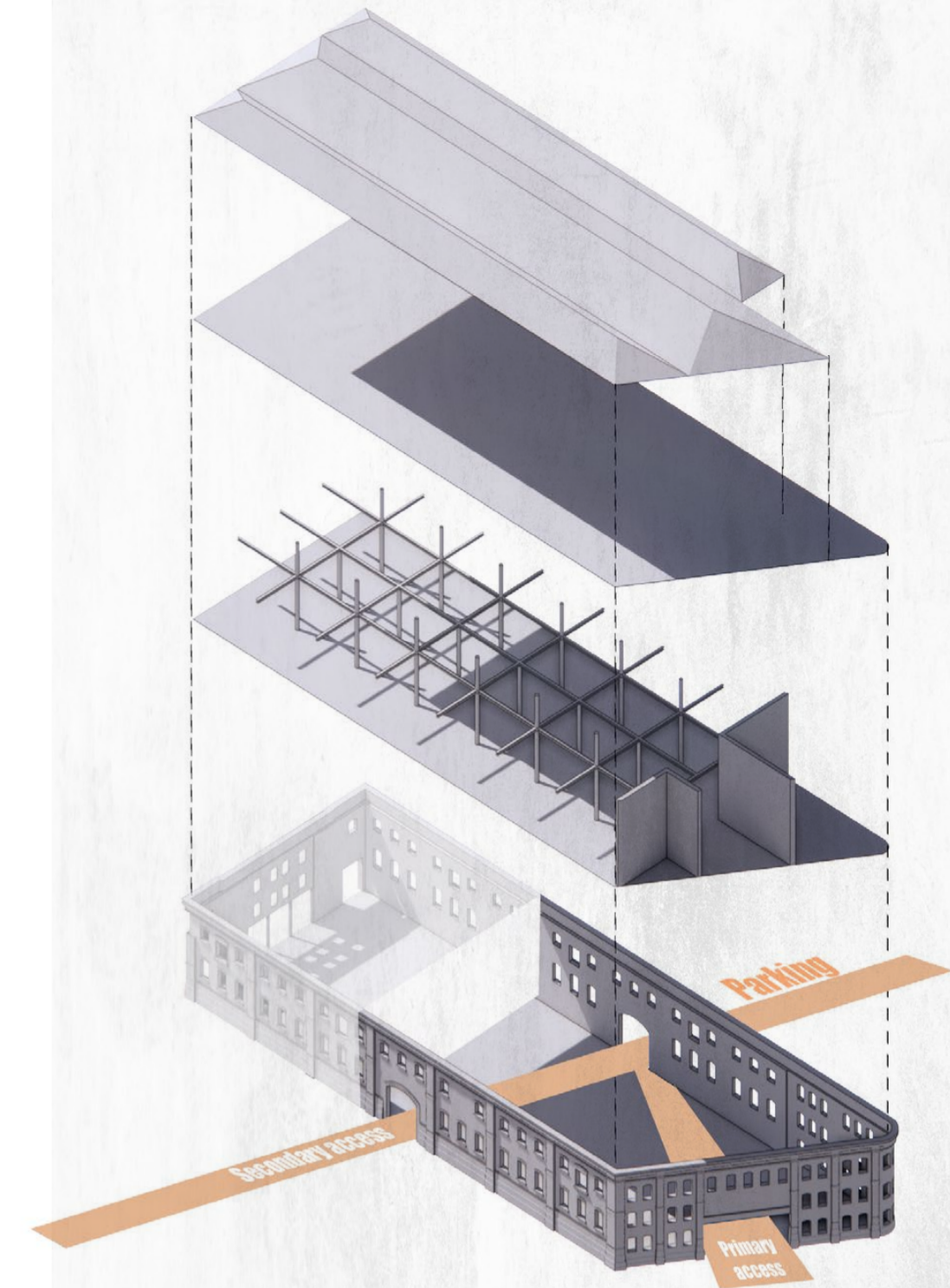
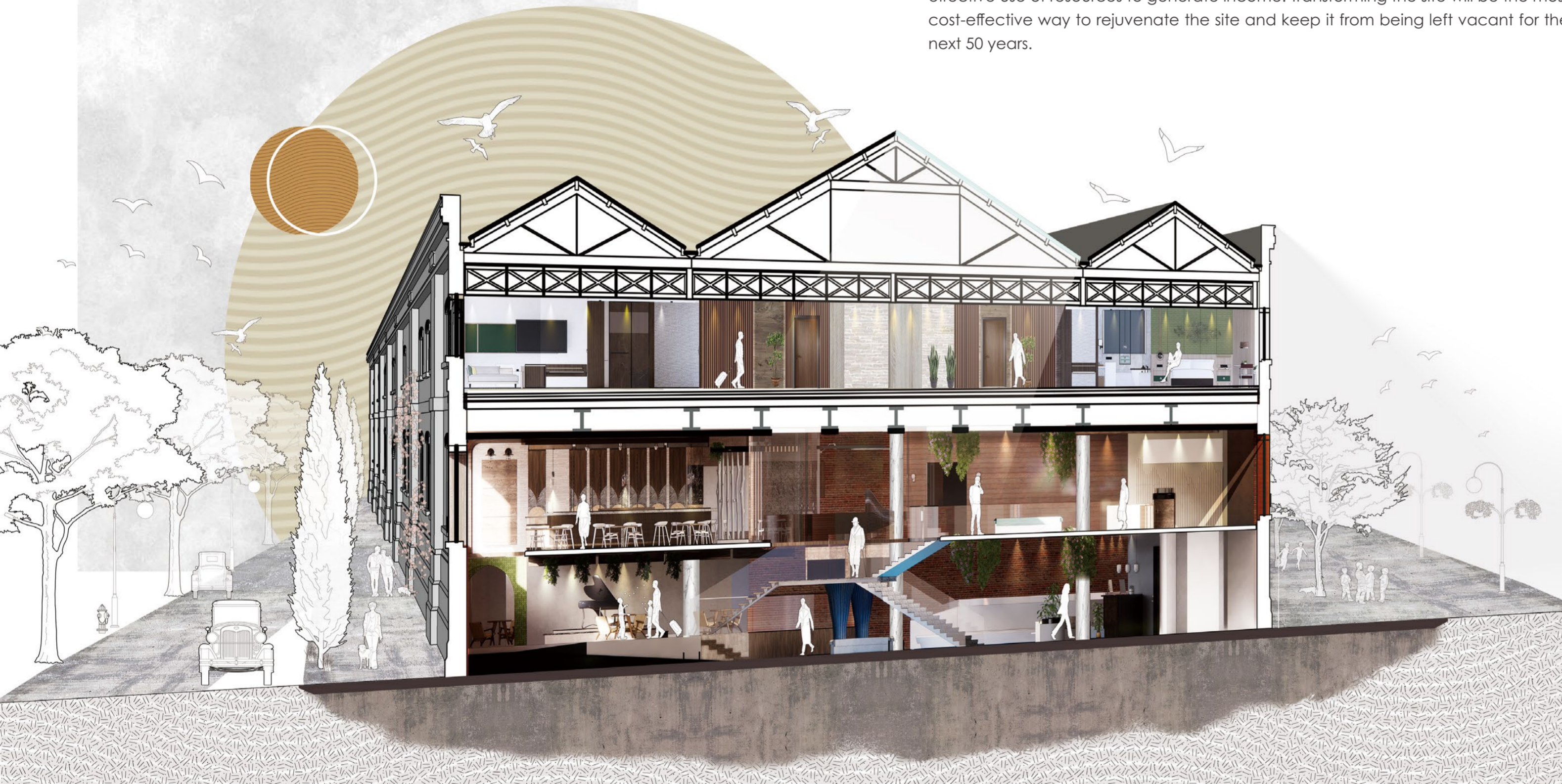
NATURAL FOREST

ENJOY A RELAXING MOMENT IN NATURE

EXISTING BUILDINGS
ADAPTIVE INTERVENTION DESIGN

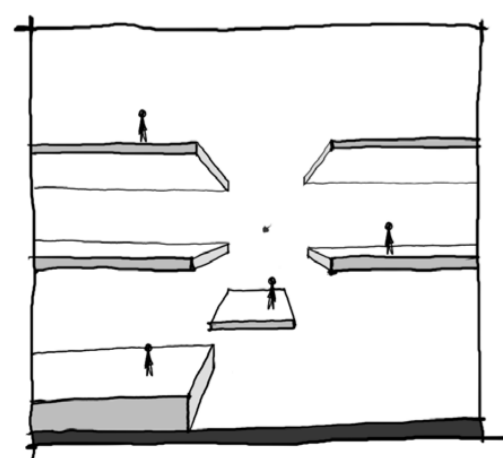
CONTEXT

As times change, the needs of society and the economy change, so do the internal spaces of buildings and their functions. The project is to redesign the Friar Gate Warehouse in Derby, which has been vacant for over 50 years, so that it can be adapted to the functional needs of modern society. So, the plan was to transform it into a hotel with a mixed space type adapted to the needs of modern as well as future society. The intervention provides a building which combines standard and luxury rooms, retail space, a large restaurant, bar, café, communal lounge space, gym and spa. In the adaptation process, mixed-use spaces, interventions of Biophilic design and the quest for community well-being are considered. Which will be an effective use of resources to generate income. Transforming the site will be the most cost-effective way to rejuvenate the site and keep it from being left vacant for the next 50 years.

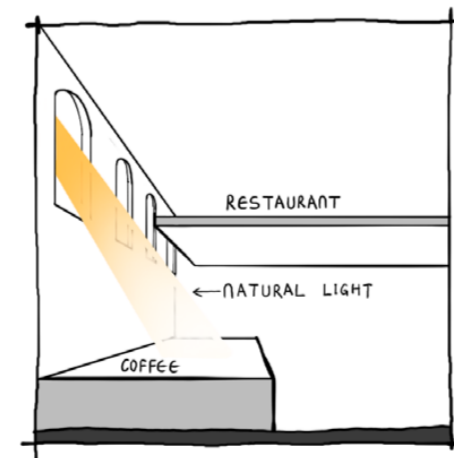
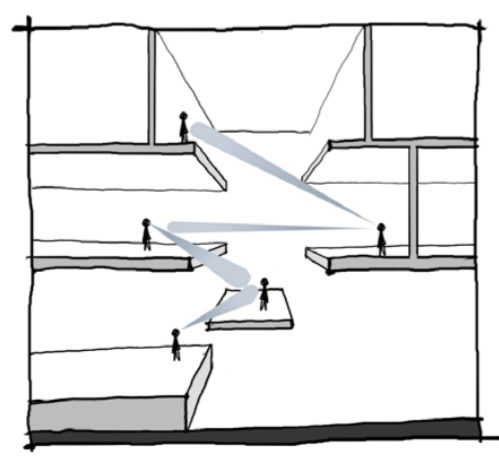


EXISTING BUILDING

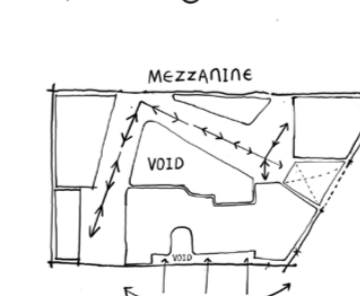
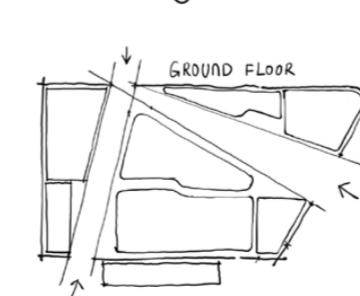
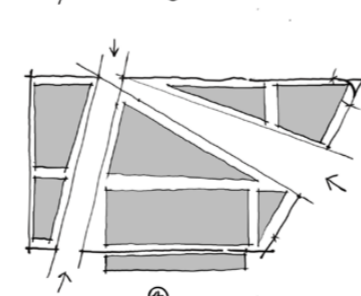
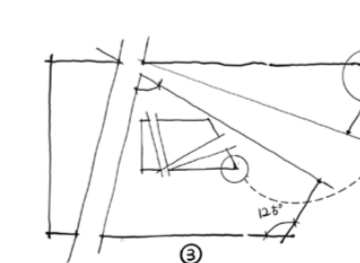
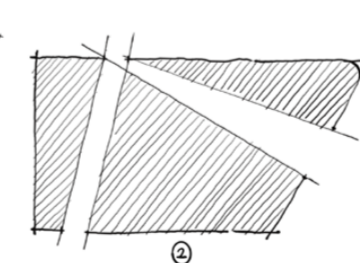
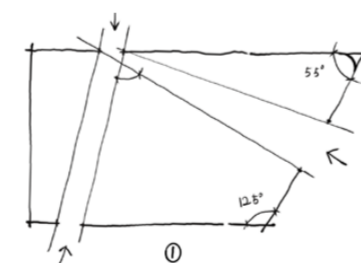
As the existing building facade cannot be altered, the original entrance and exit will be retained. The main entrances will be connected in order to ensure the unobstructed flow of space and the rationalisation of the circulation. The connection of the entrances creates two main circulation routes. The new functions and spaces will be logically distributed on both sides of the passage. The main circulation paths connect the three sides of the building, which will effectively direct the flow of people and increase the flow of visitors to the space, creating a virtuous circle.



SPATIAL INTERACTION



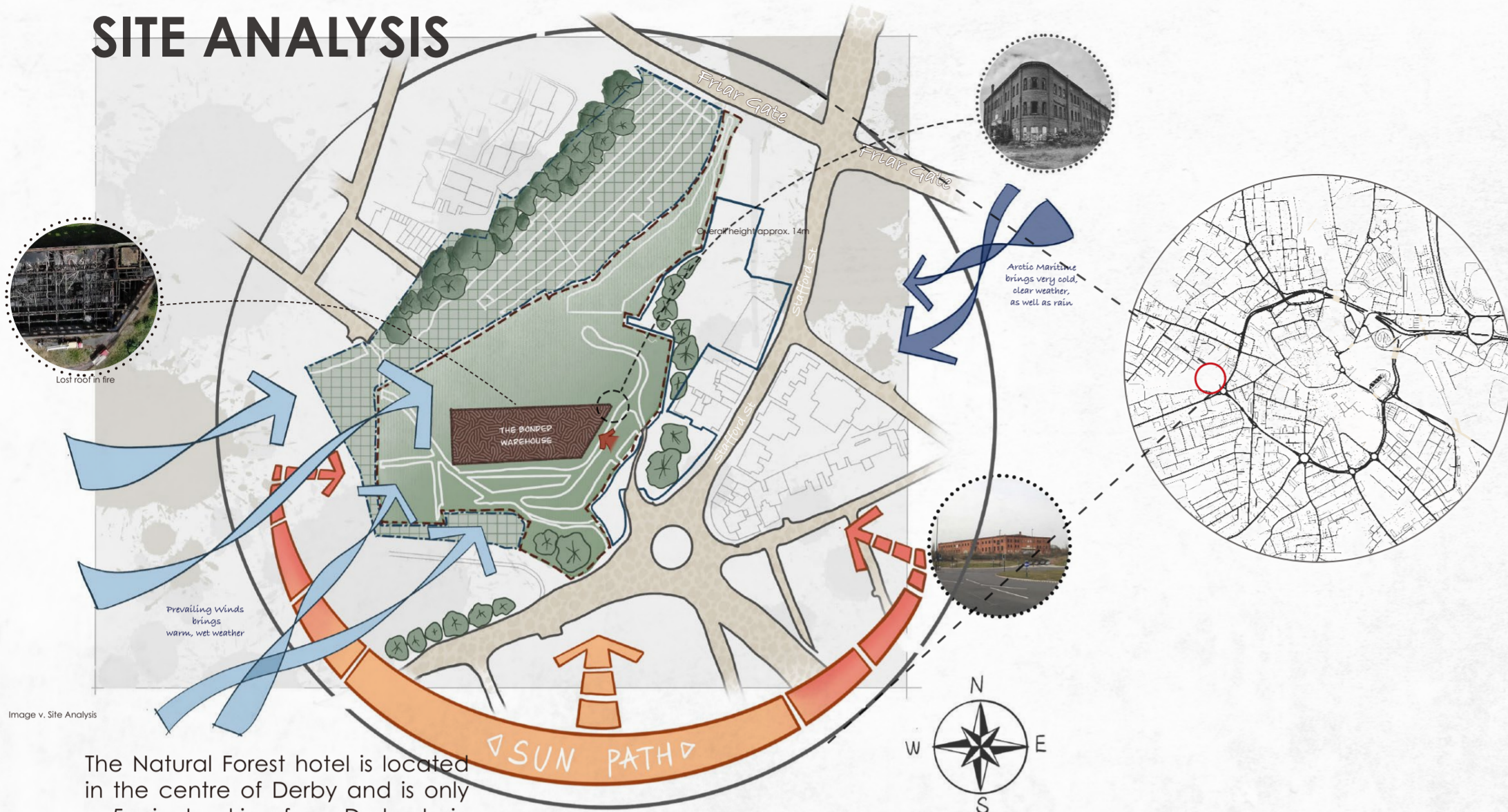
MAKING THE MOST OF NATURAL LIGHT



CIRCULATION

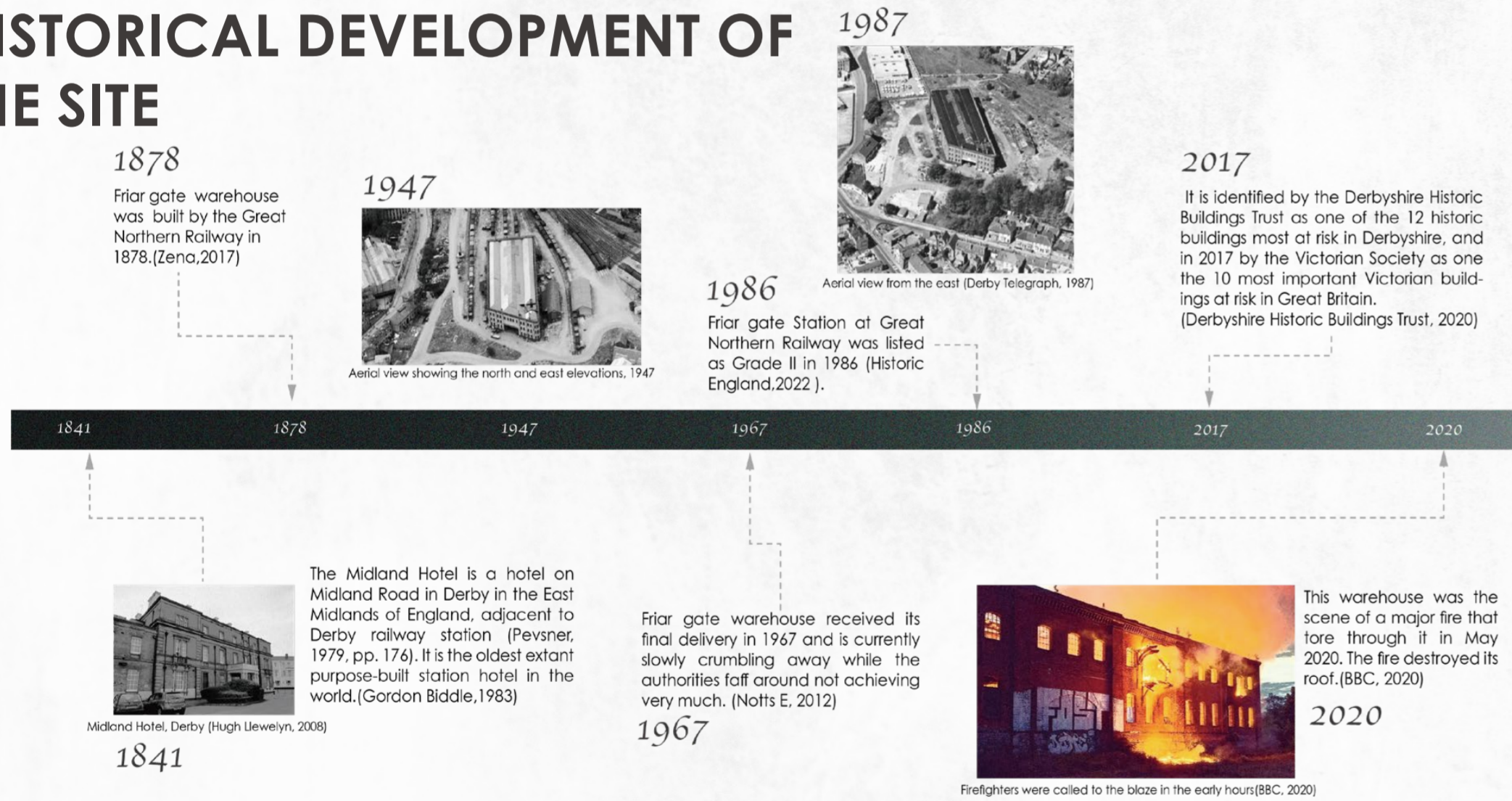


SITE ANALYSIS

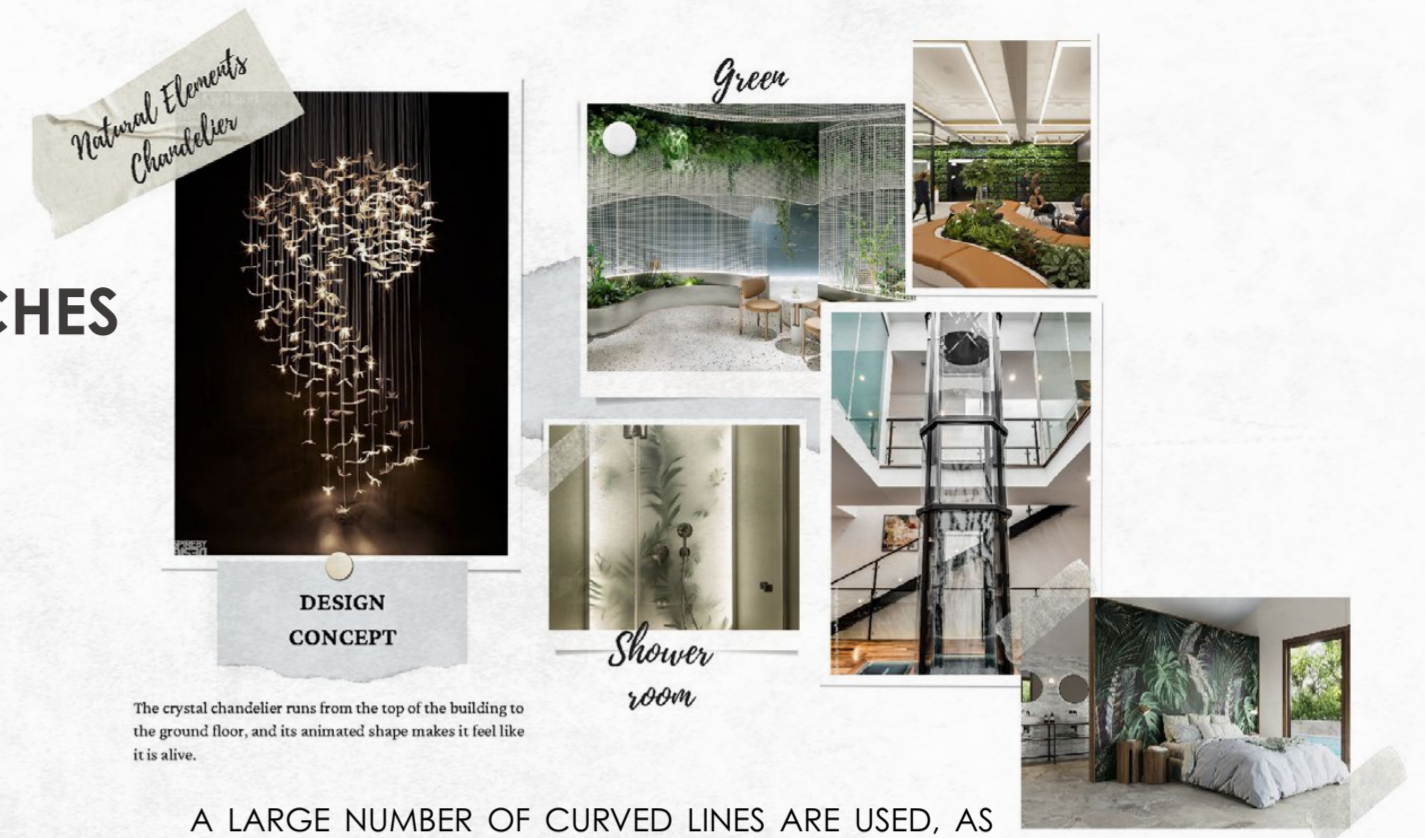


The Natural Forest hotel is located in the centre of Derby and is only a 5-minute drive from Derby train station, with many bus stops around the area for easy access.

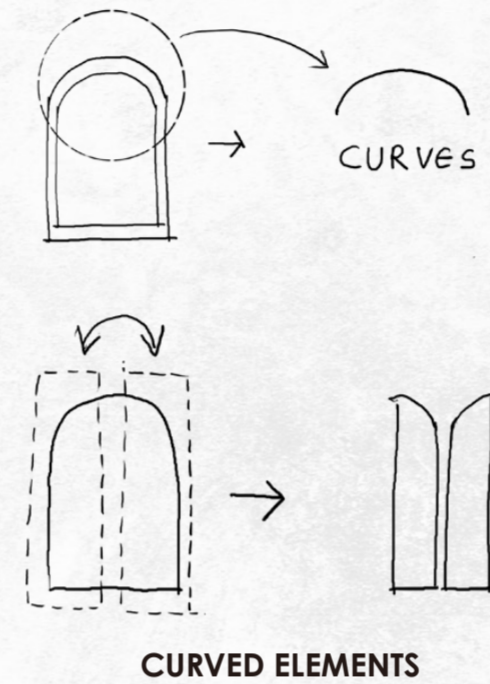
HISTORICAL DEVELOPMENT OF THE SITE



MOOD BOARD



CONCEPTUAL SKETCHES

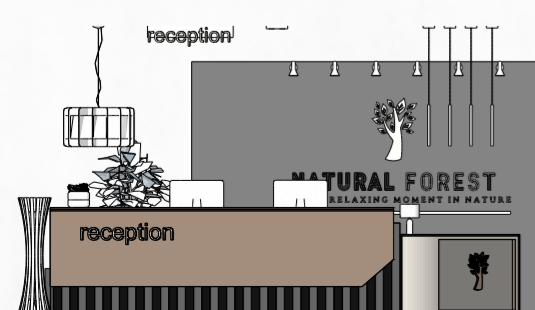


CONCEPT BOARD

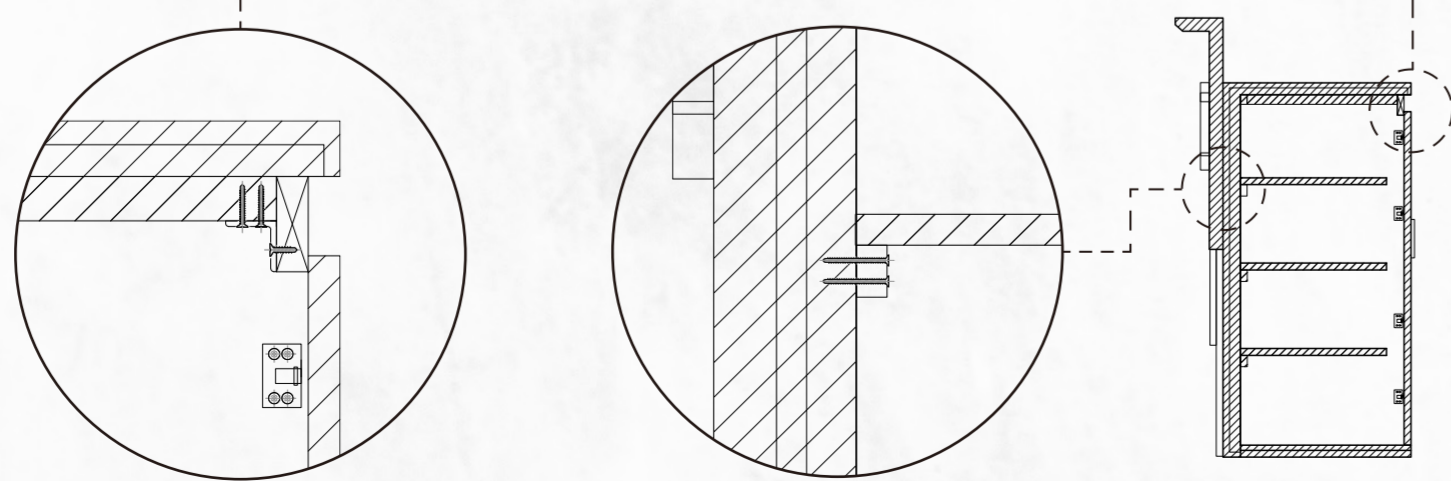


THE ROTATING, CONTINUOUS ARCS GIVE A SENSE OF SUSTAINABILITY. THE BIOPHILIC DESIGN BRINGS THE BUILDING TO LIFE AND THE USE OF NATURAL ELEMENTS CREATES A RELAXING SPACE. THE VERTICAL OBSERVATION LIFT OFFERS PANORAMIC VIEWS.

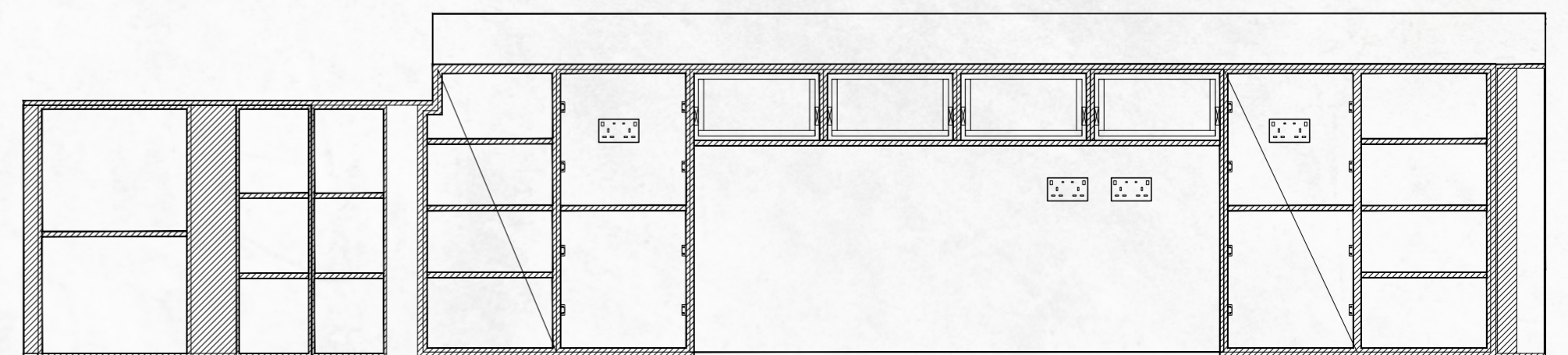
JOINERY ITEM - RECEPTION



FRONT VIEW

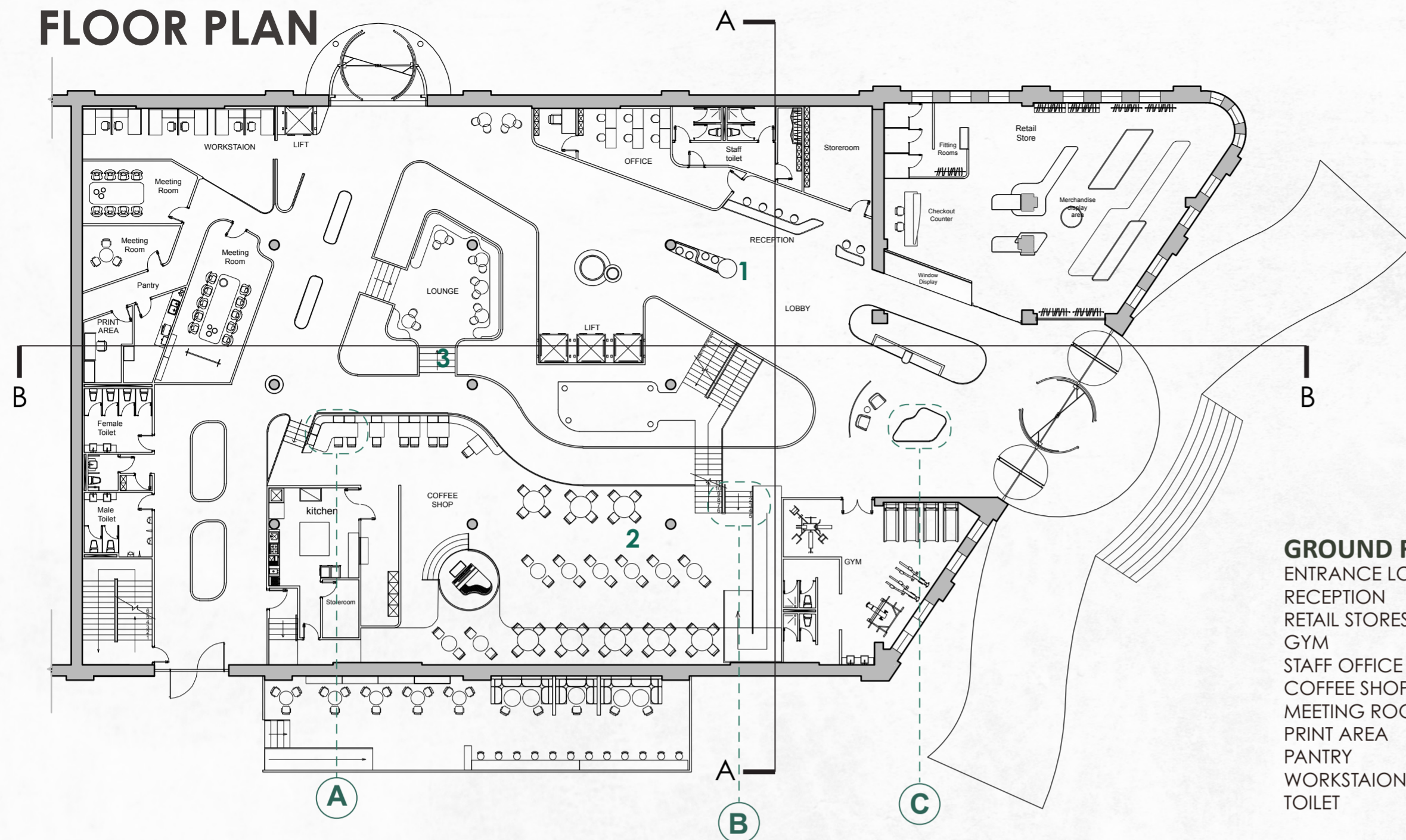


TRANSVERSAL SECTION



LONGITUDINAL SECTION

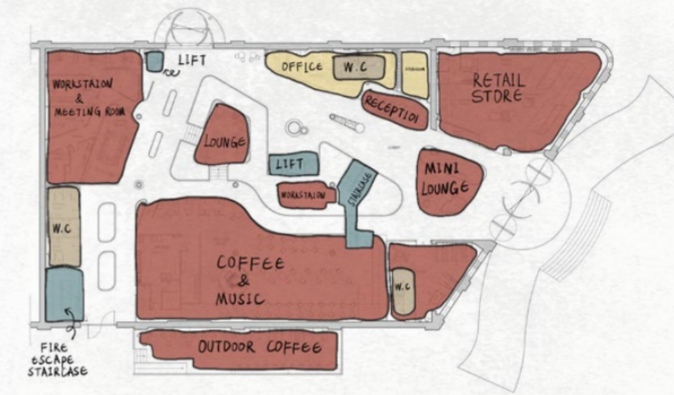
FLOOR PLAN



- GUEST PUBLIC SPACES
- STAFF OFFICE & STORAGE ROOM
- STAIRCASES & LIFTS
- TOILETS & SHOWERS

GROUND FLOOR

ENTRANCE LOBBY
RECEPTION
RETAIL STORES
GYM
STAFF OFFICE
COFFEE SHOP
MEETING ROOM
PRINT AREA
PANTRY
WORKSTATION
TOILET



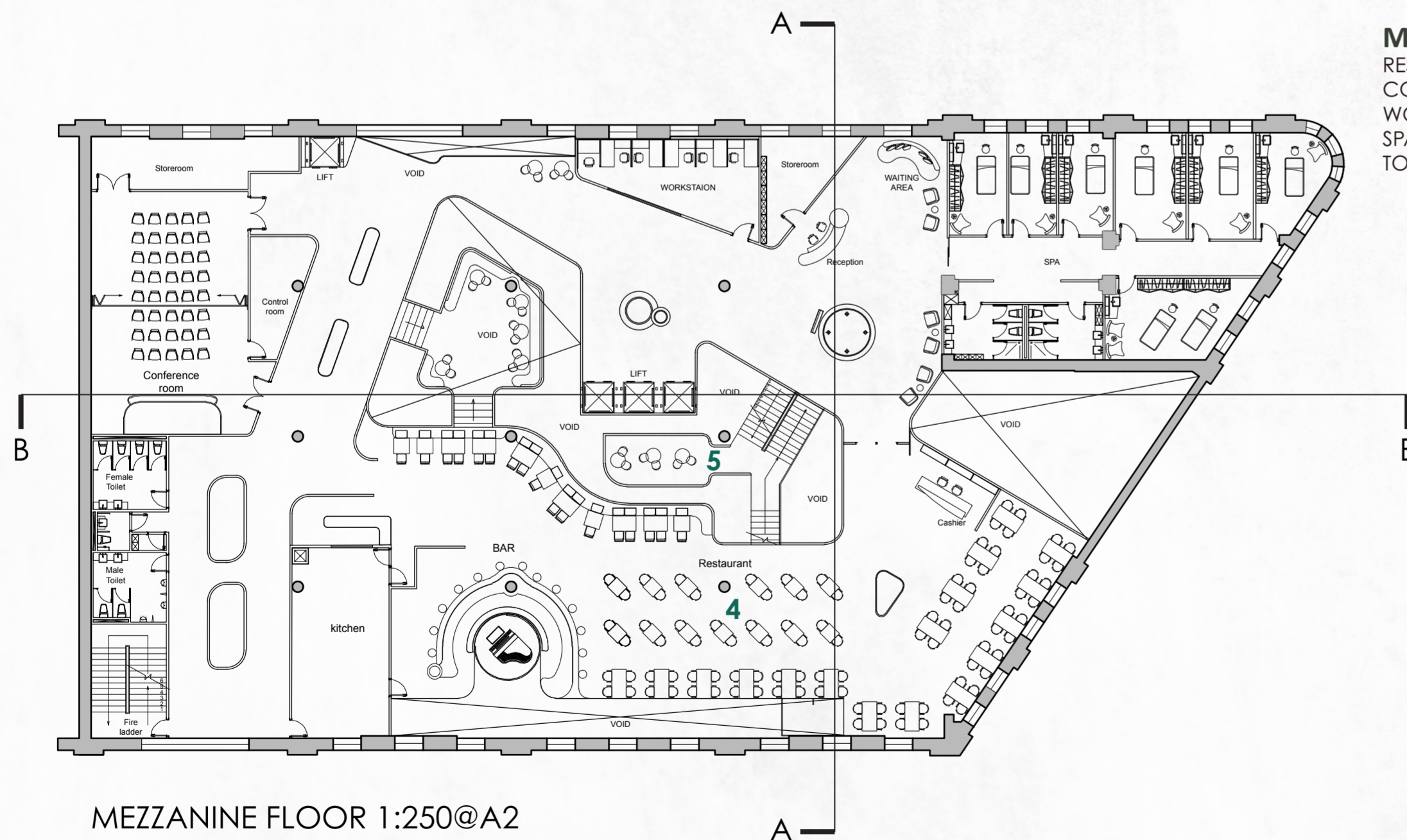
GROUND FLOOR 1:250@A2



1. RECEPTION GROUND FLOOR

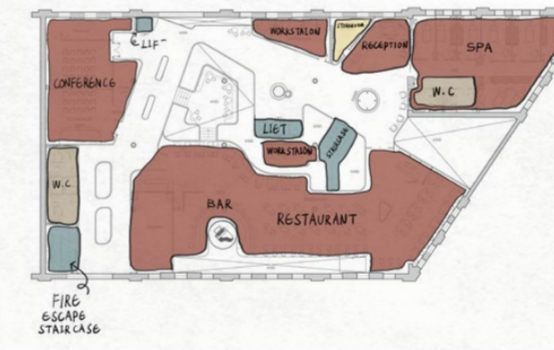


2. COFFEE AREA GROUND FLOOR



MEZZANINE FLOOR

RESTAURANT
CONFERENCE ROOM
WORKSTATION
SPA
TOILET



MEZZANINE FLOOR 1:250@A2



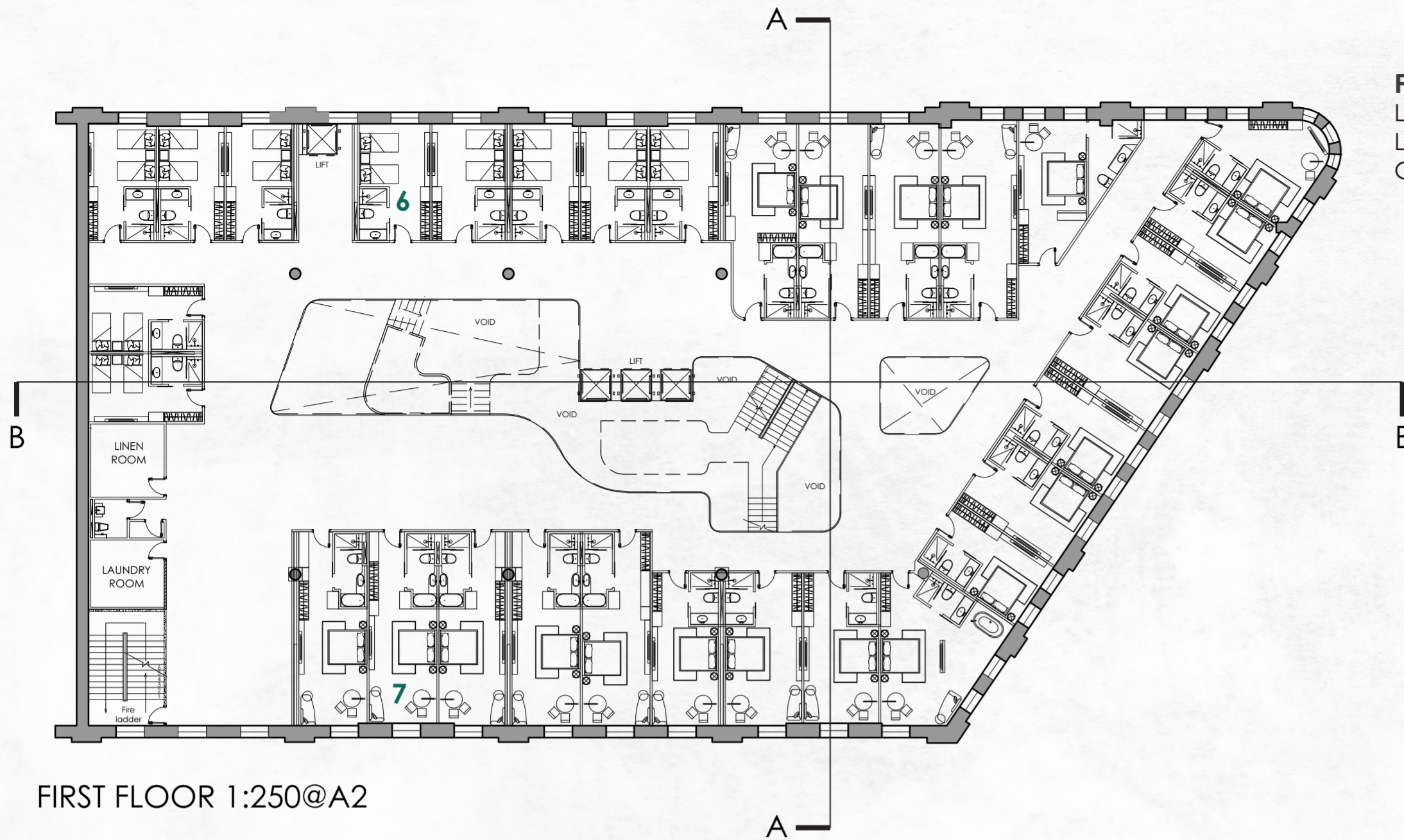
3. LOUNGE AREA GROUND FLOOR



4. RESTAURANT MEZZANINE FLOOR



5. WORKSTATIONS MEZZANINE FLOOR



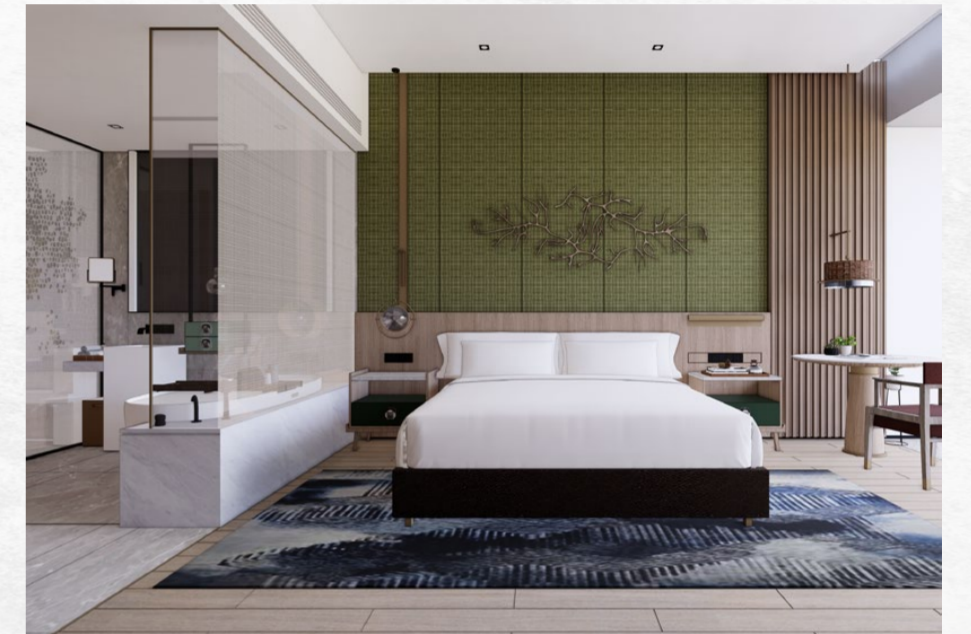
- FIRST FLOOR**
 LINEN ROOM
 LAUNDRY ROOM
 GUEST ROOM
 -STANDARD TWIN ROOM
 -STANDARD QUEEN ROOMS
 -4 PREMIER KING ROOM
 -9 DELUXE KING ROOM



4A. RESTAURANT NIGHT VIEW MEZZANINE FLOOR

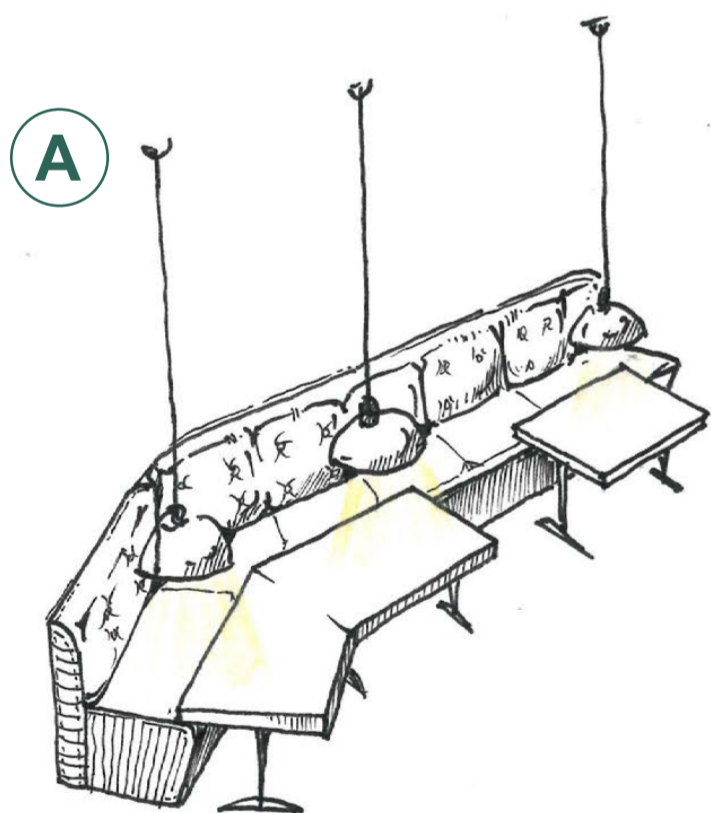


6. STANDARD TWIN ROOM FIRST FLOOR

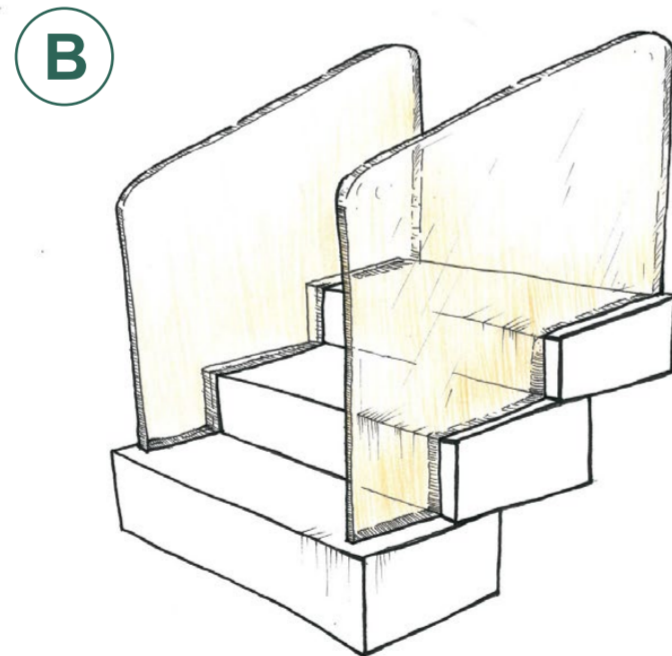


7. DELUXE KING ROOM FIRST FLOOR

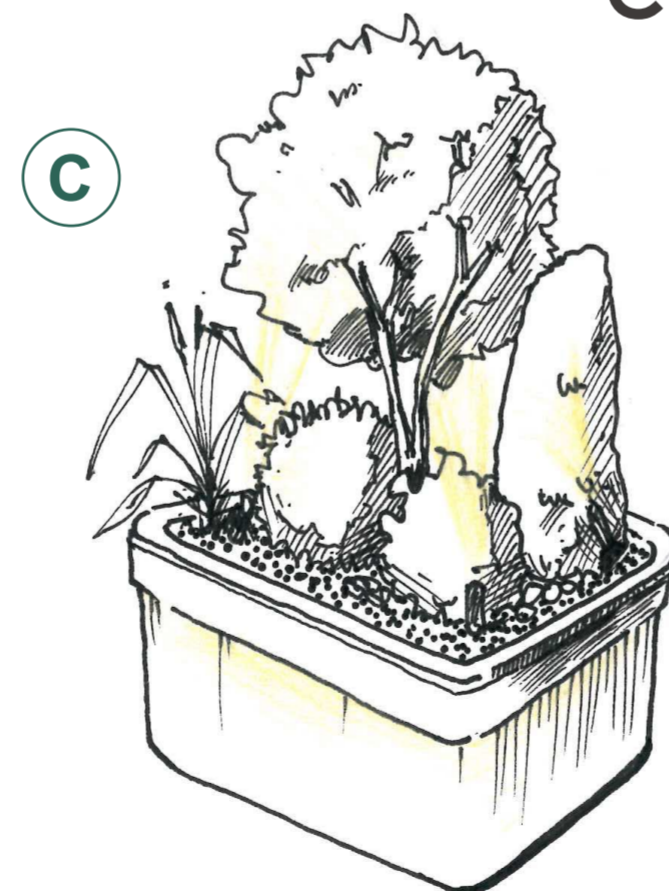
LIGHTING MAP



The pendant lamp is hung directly above the table to illuminate the table and create ambience.



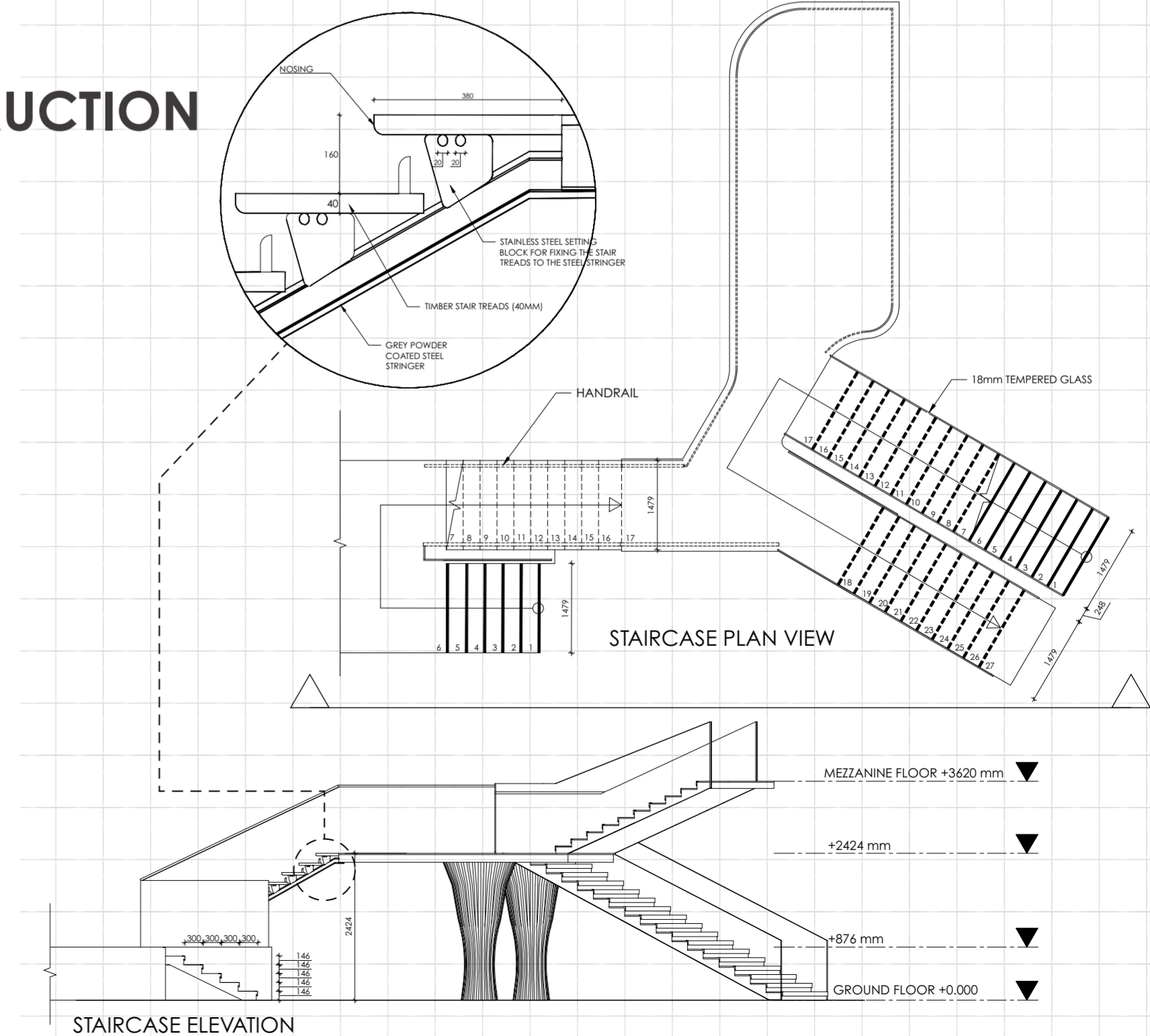
The light strip is installed under the stair treads and illuminates the treads evenly.



The light is shining on the plants from the bottom up.

The concealed light strip is located under the planters.

STAIRCASE CONSTRUCTION



SIGNAGE BRANDING PACK



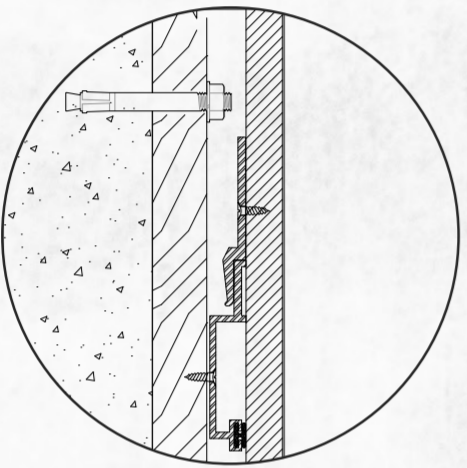
Site Map
1500 mm

Branding Signage
3147 mm

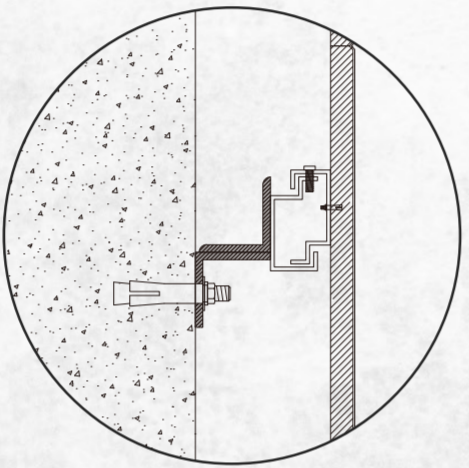
Service Signage
300 mm

Directional Signage
500 mm

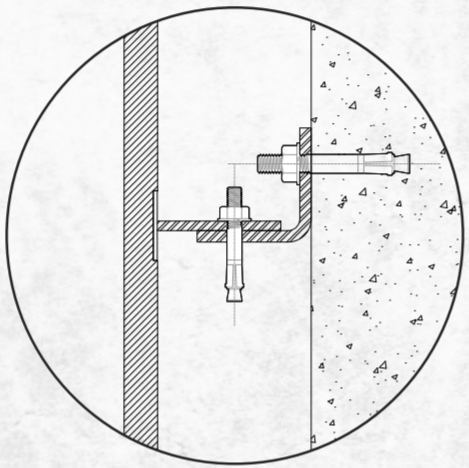
Identify Signage
300 mm



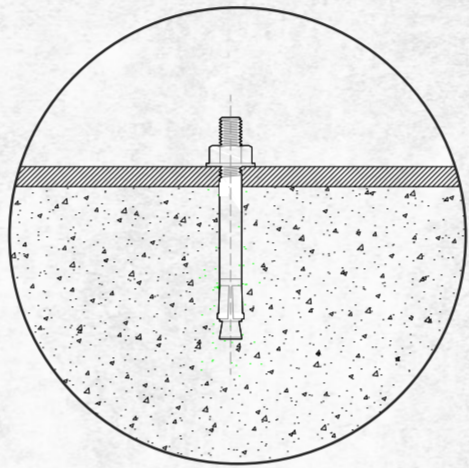
FIXTURE TO WALL



IDENTIFY & SERVICE SIGN



BRANDING SIGNAGE



FIXTURE TO FLOOR

MATERIALITY & COLOUR



The choice of materials has been made by retaining the original historic brick walls, while using modern panels. The clash and fusion of old and new materials enhances the uniqueness of the interior space. The texture of the extensive natural stone contrasts strongly with the delicacy of the fabric. Bright colours are used as decorative accents and combined with natural elements to give a sense of relaxation.

SAMPLE BOARD



1. DINING CHAIRS
2. Bar stools
3. Dining chairs
4. Swivel high stool
5. Coffee chair
6. Coffee table
7. Indoor potted plants
8. Pendant light
9. Plants
10. Indoor plants



SECTION AA
NOT TO SCALE



SECTION BB
NOT TO SCALE