

# BABYLON GARDENS

— eat | drink | grow —

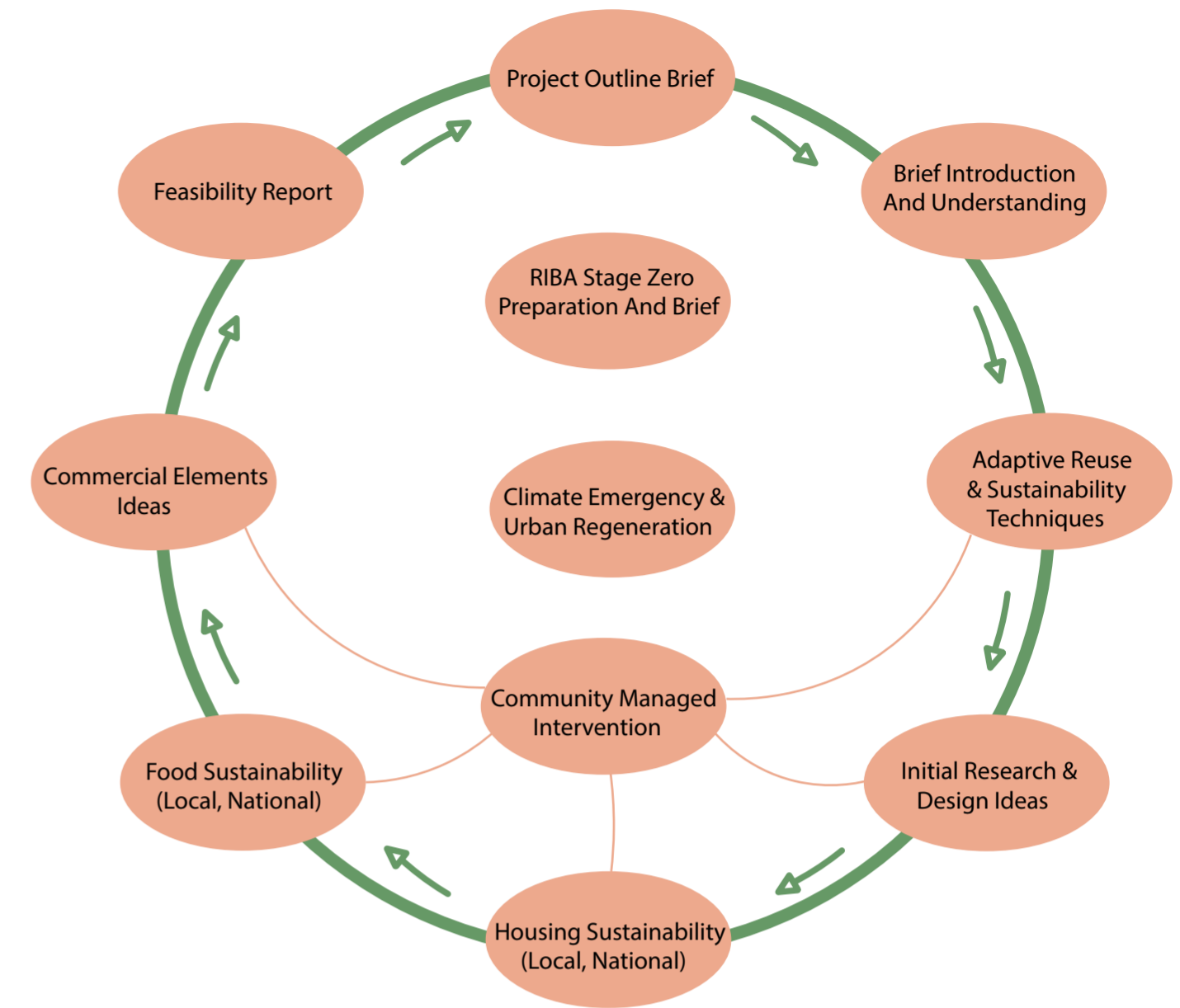
By Samuel Templeman-Webb

Short description of the project: The frigates goods yard Bonded Warehouse in Derby has long been abandoned and public attention relating to the possible regeneration of the building has grown, this has led to this project adopting an adaptive reuse intervention, it is already known the environmental benefits of reuse over demolishing and rebuilding. The project includes affordable-to-rent flats, and commercial businesses.

This project is also relevant to the subject of climate emergency, more particularly food sustainability, and highlights the non-sustainable farming techniques farmers are using within their farms, this project has facilities to spread awareness of healthy food, where to access locally produced sustainable food and how to grow it at home. The project essentially sets up a support network for local and regional farmers via a farm shop and provides much needed financial support.



1: Helix Fountain & Walkway Space



Project Journey Beginning

→ Direction Of Journey

— Idea Connection

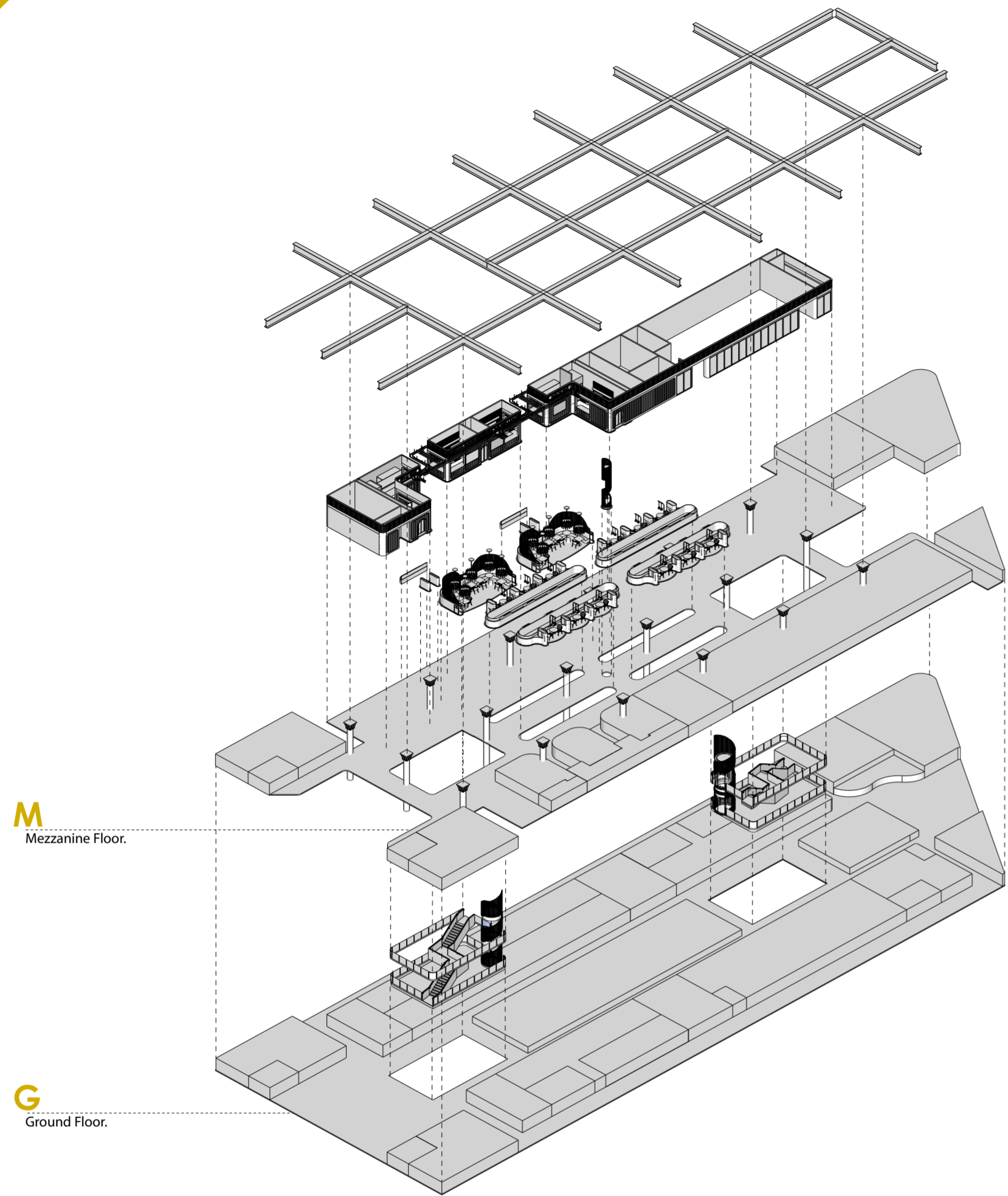


Digital Sketch Friargates Bonded Warehouse

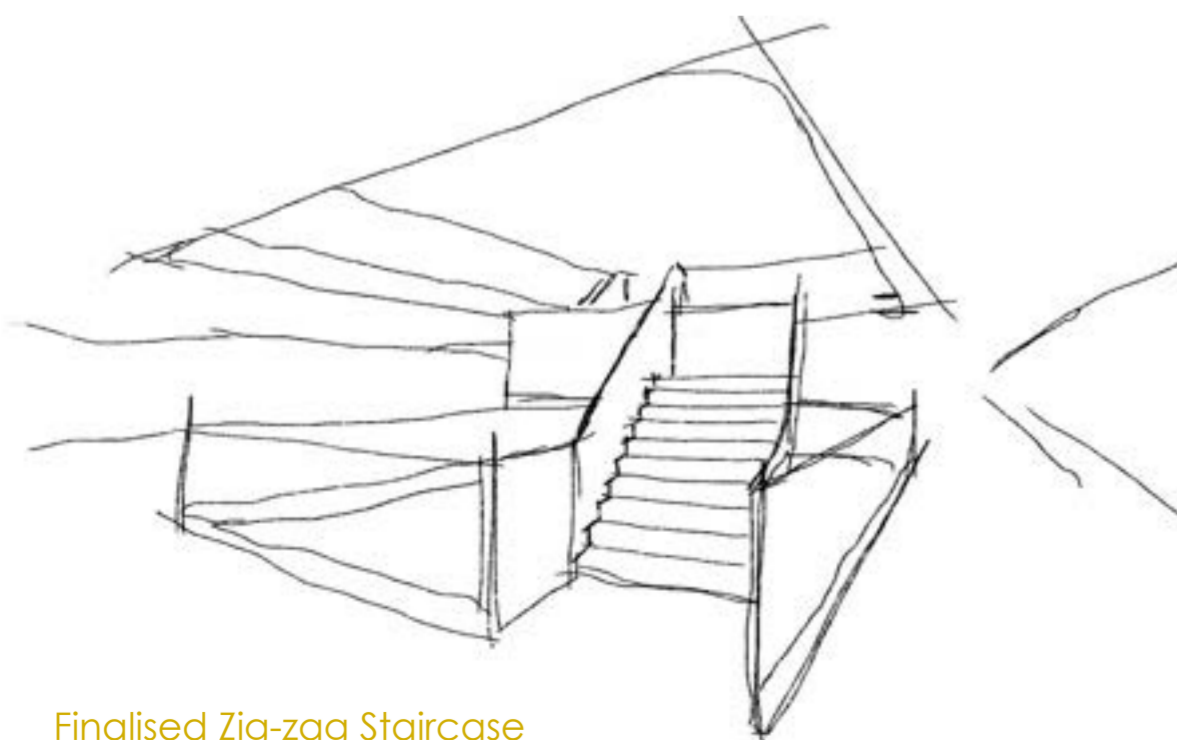


0 1 2 3 4 5M

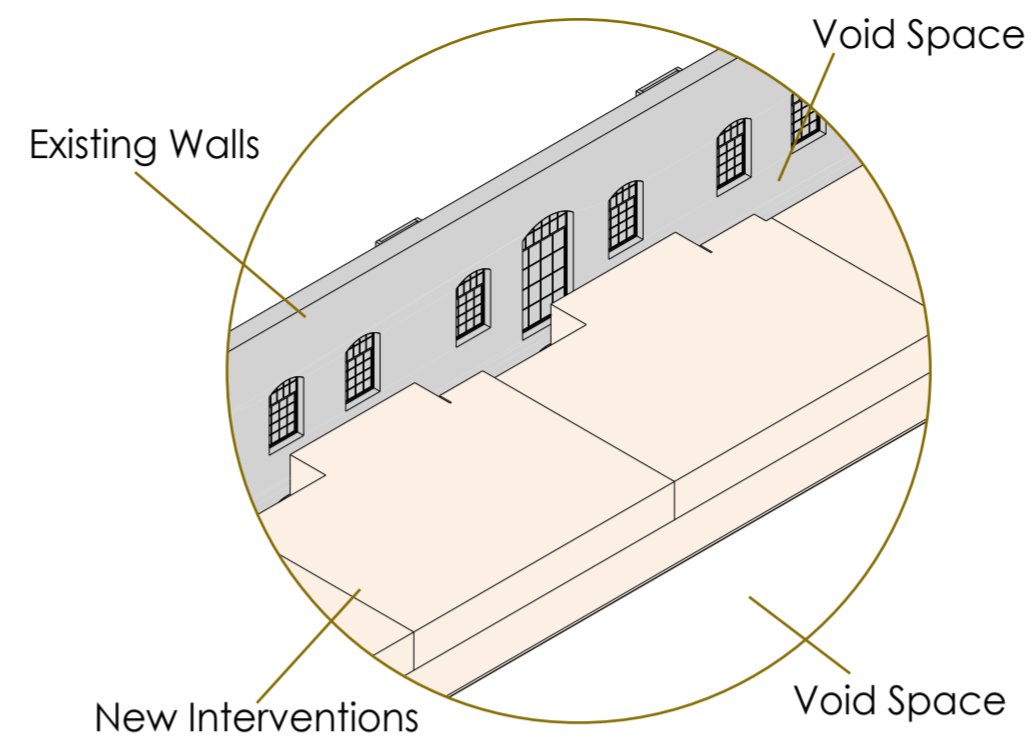
Rendered Section 1-1, Food & Drink Containers, Sitting Areas



Isometric Exploded View Of Food And Drink Areas And Ground Floor Connection



Finalised Zig-zag Staircase And Void Space Sketch

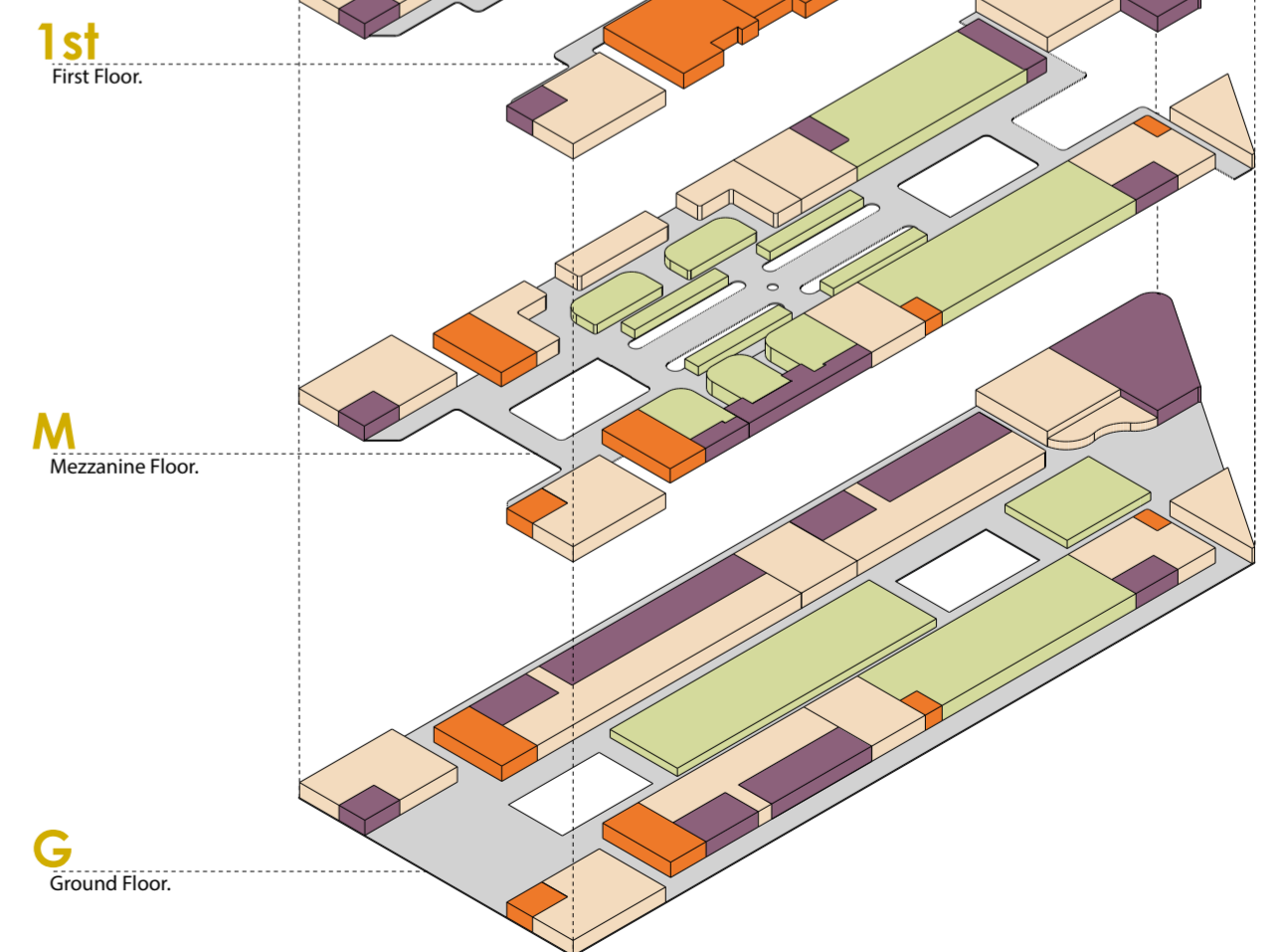
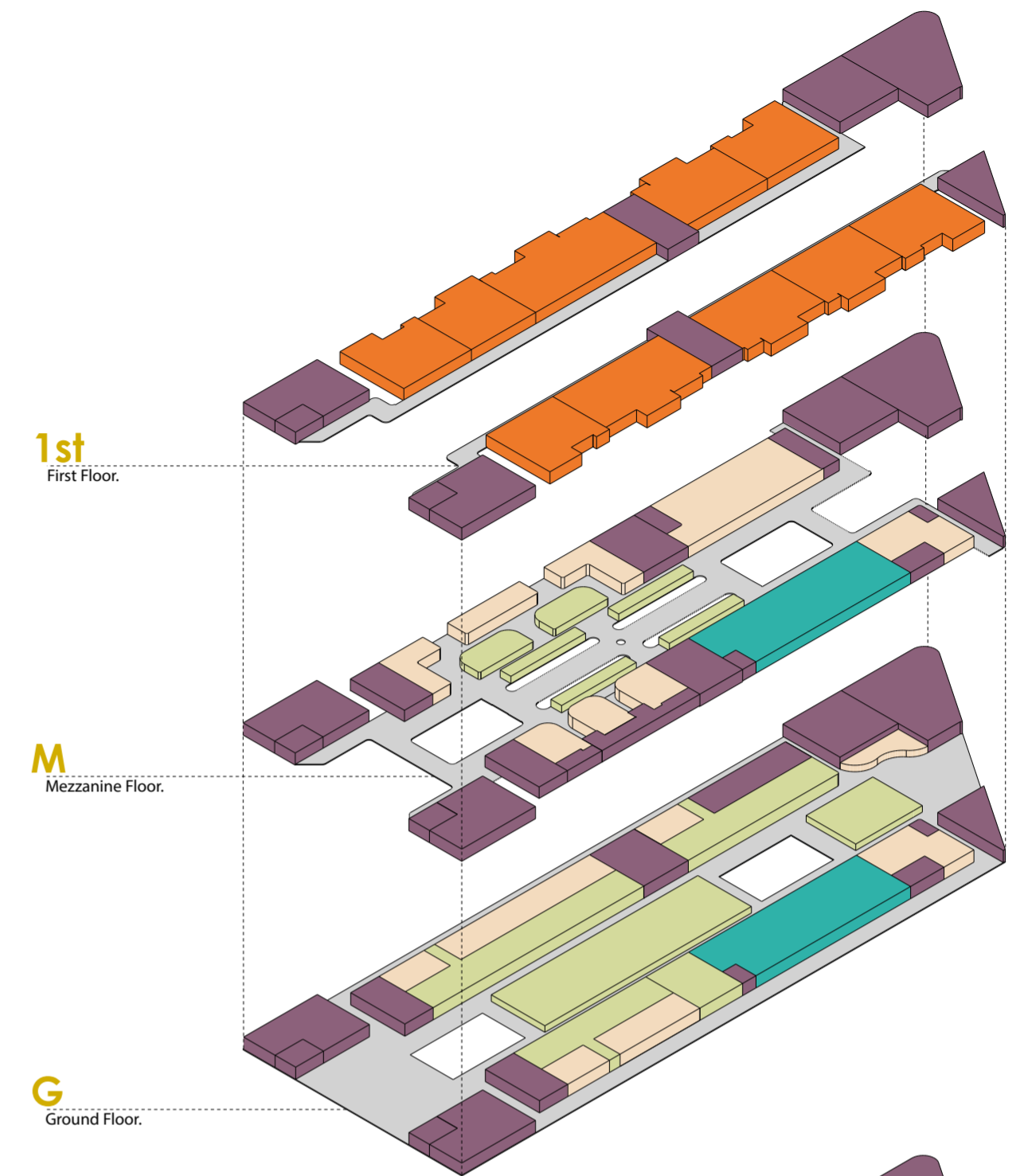


Space Within A Space Diagram

For further more detailed information on the locations of areas within the space, please refer to the finalised floor plans.

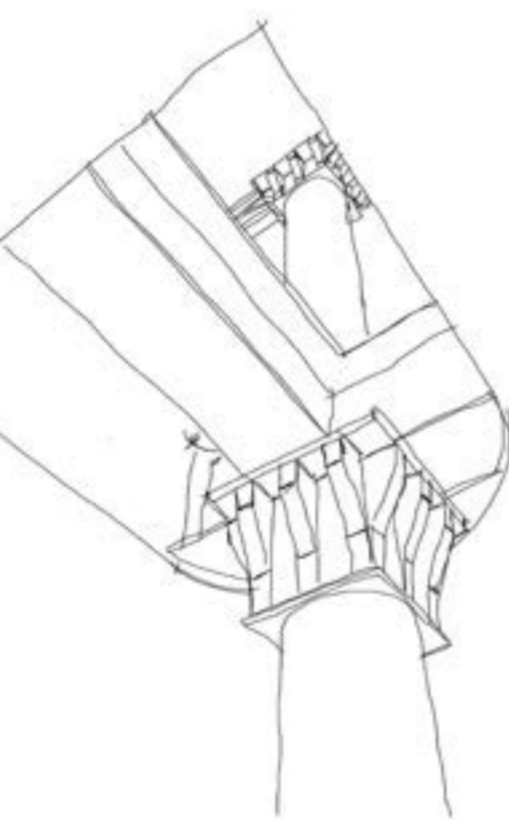
- Urban Farms - Hydroponic areas & green seating areas
- Residential - Affordable to rent flats.
- Commercial - Food & drink, retail and back of house services.
- Management - Staff areas, offices, fire escapes, toilets.
- Education Spaces - Tasting and potting workshop.

Exploded Isometric Accommodation Graph (Top Right)

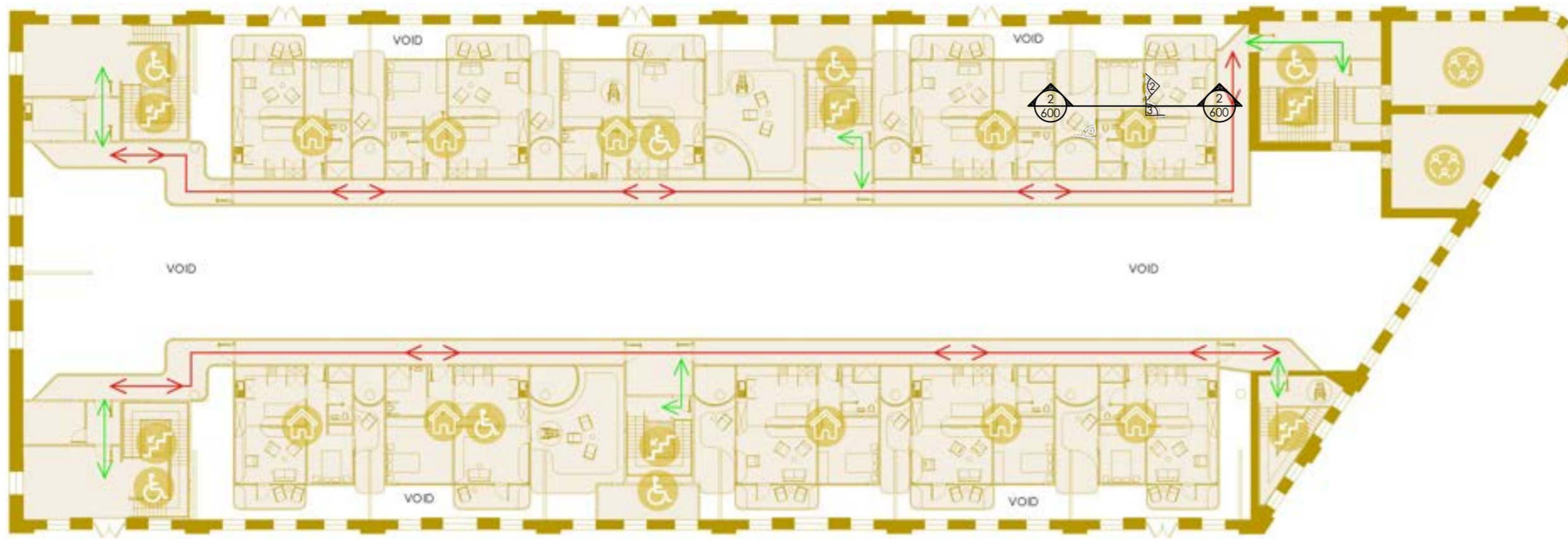


- Public
- Private
- Semi Private
- Staff

Zoning Diagram (Bottom Right)



Finalised Original Beams / Columns Exposed Through New Ceiling Sketch

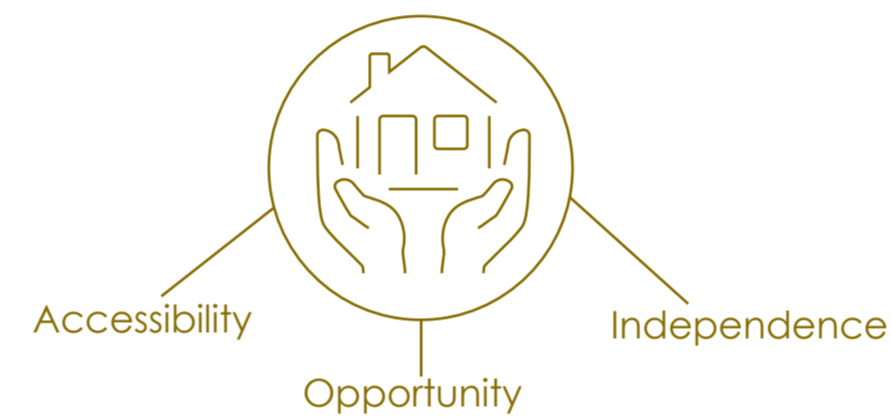


First Floor Plan

Primary Route

Secondary Route

- Stairs Downwards
- Affordable Living
- Disabled Accessibility
- Staff and Back of House Services



The first floor incorporates the use of Affordable to rent flats to allow young people, including those with disabilities to afford somewhere to live whilst saving for their own place in future. Alleviating housing issues with Derby.



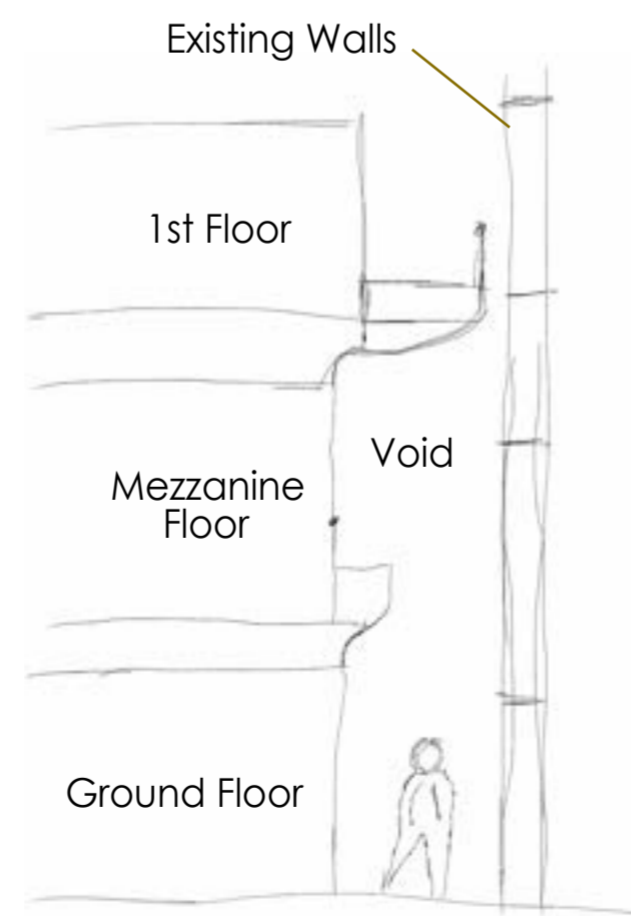
2: Flat Bedroom & Garden



3: Flat Living Room & Balcony



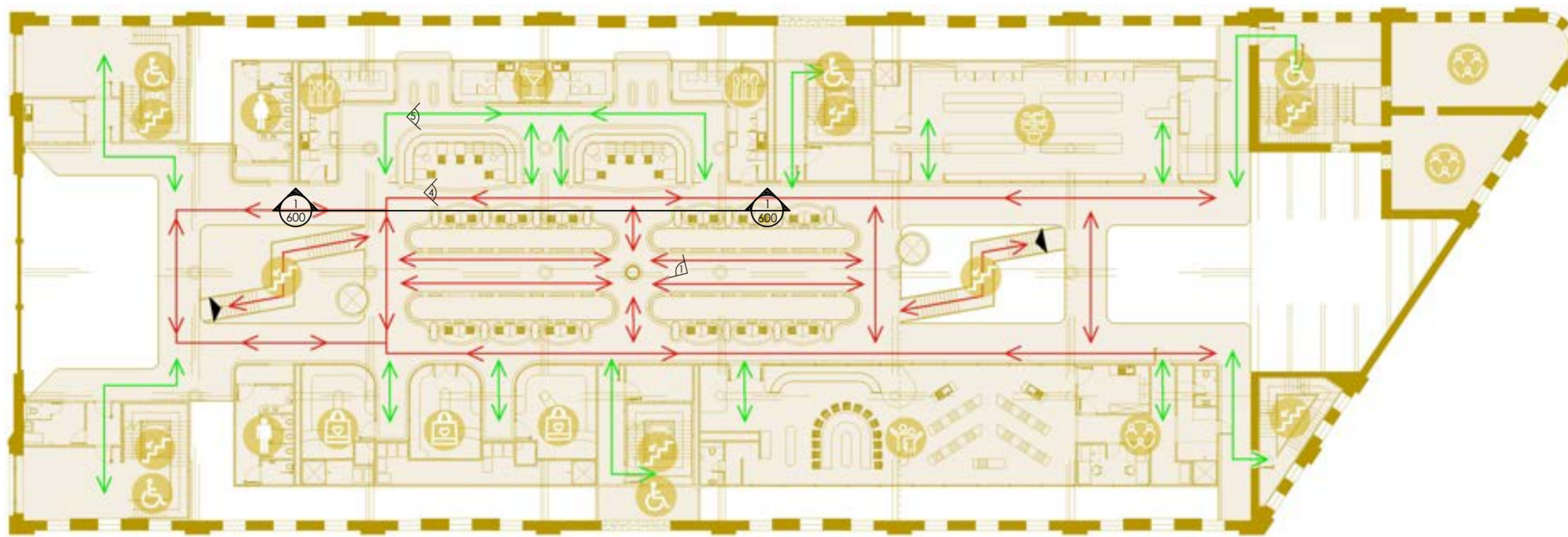
Flat Render Floor Plan



Void Zoning Sketch



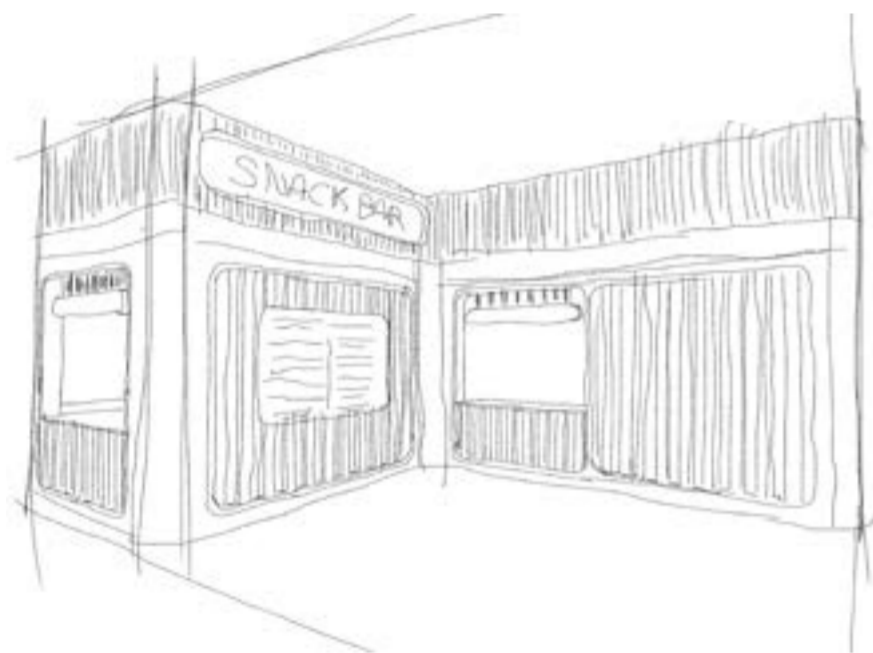
Rendered Section 2-2, Affordable To Rent Flat



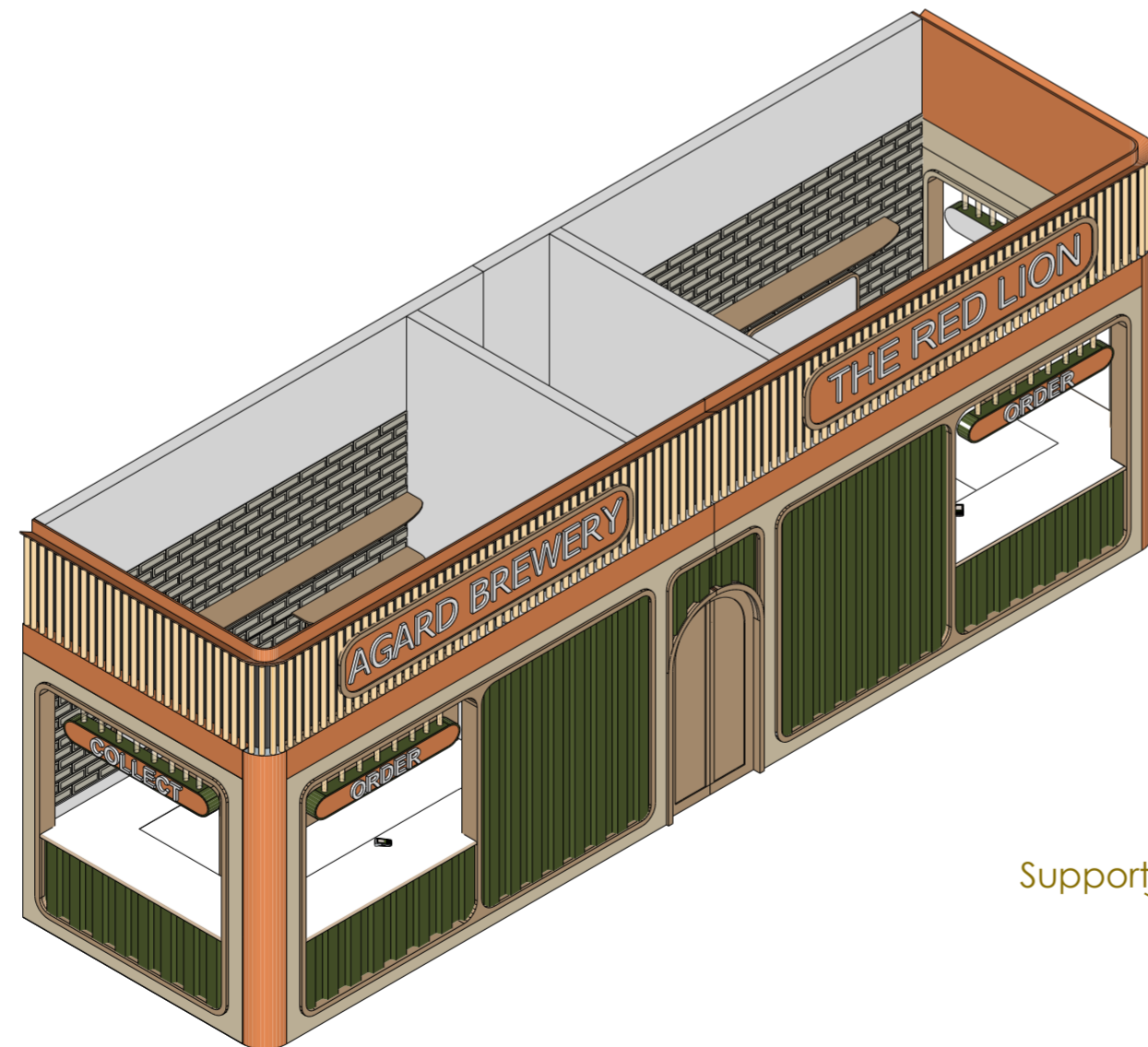
Mezzanine Floor Plan

- ▶ Entry / Exit
- ↔ Primary Route
- ↔ Secondary Route

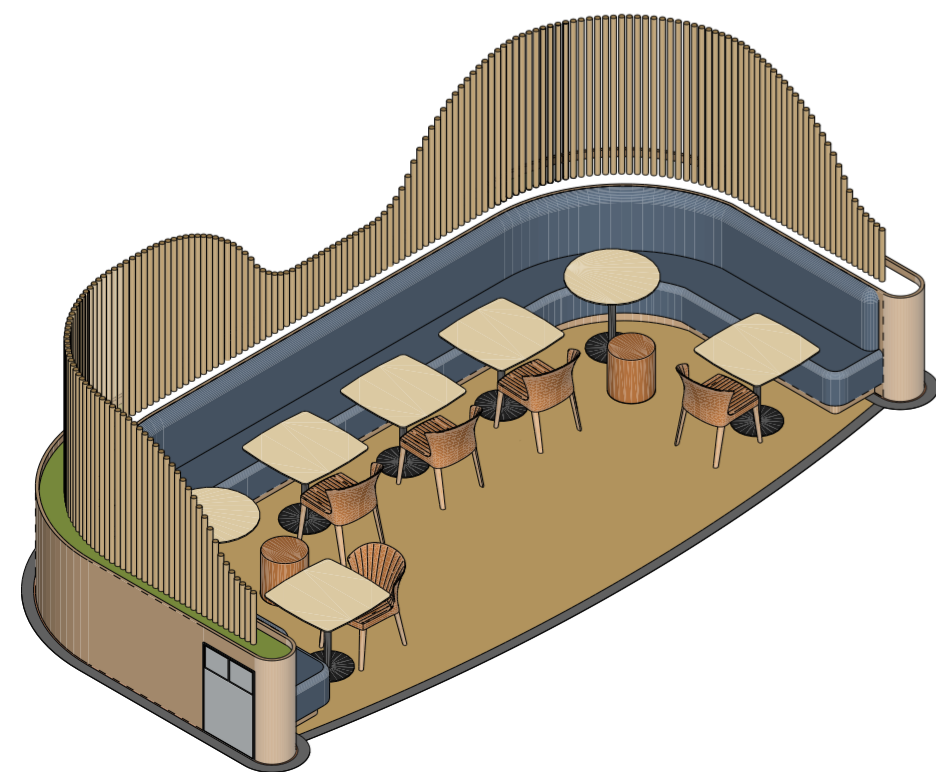
- Stairs Downwards
- Male Toilets
- Disabled Accessibility
- Staff and Back of House Services
- Female Toilets
- Retail Spaces
- Drink Container
- Cooking Workshop
- Farm Shop
- Food Container



Finalised Food Container Sketch



Food And Drink Container



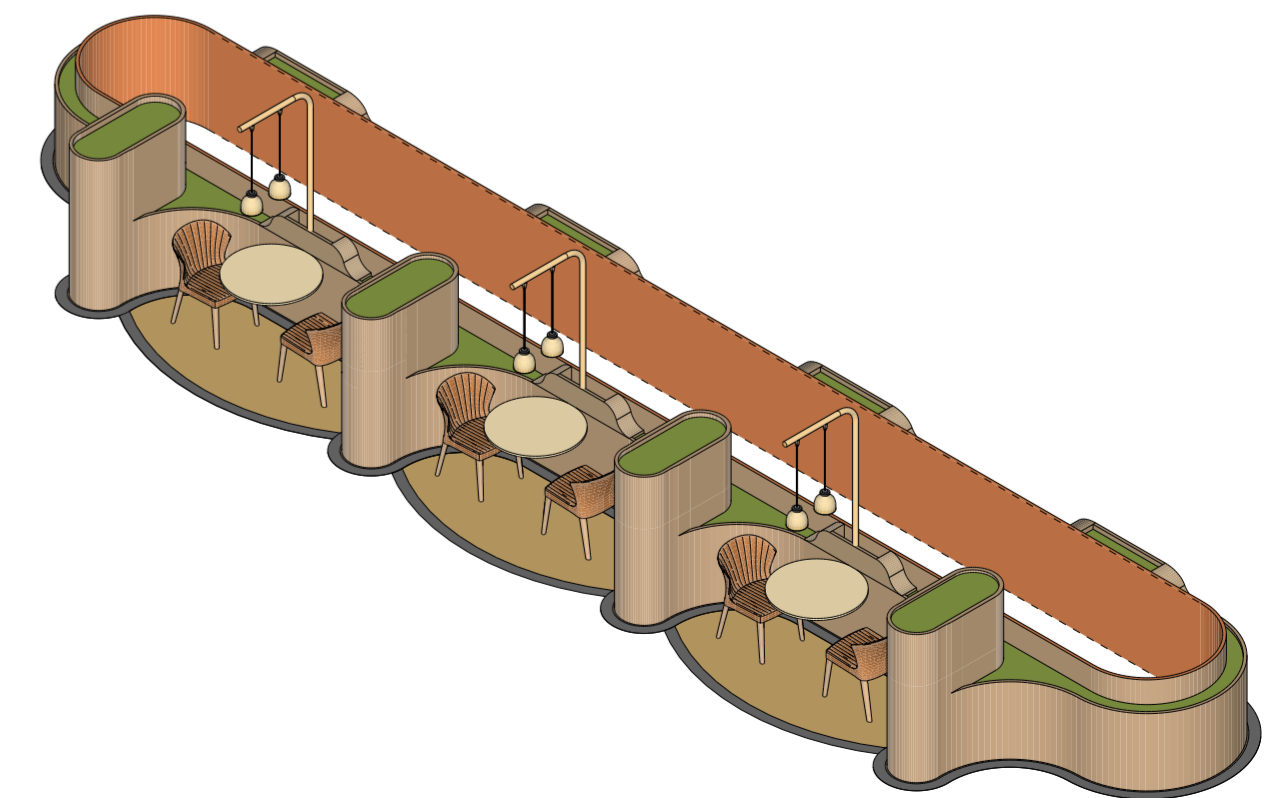
Planter Sitting Area



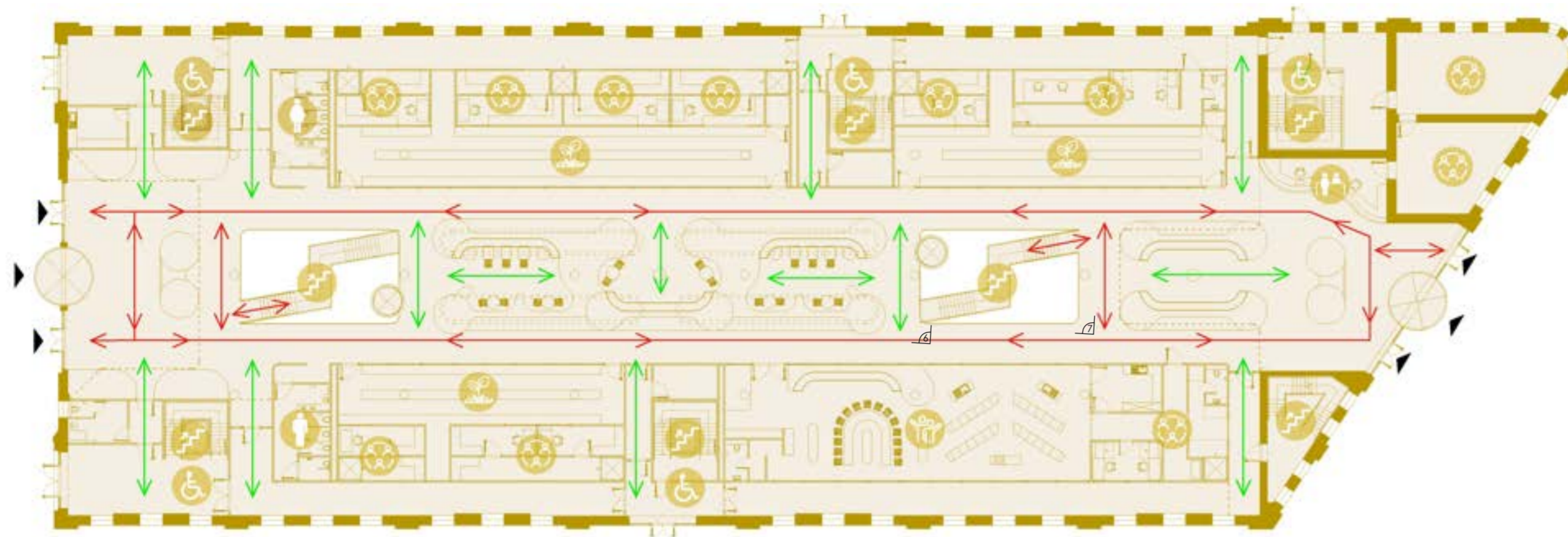
4: Planter Seating Area



5: Food & Drink Container



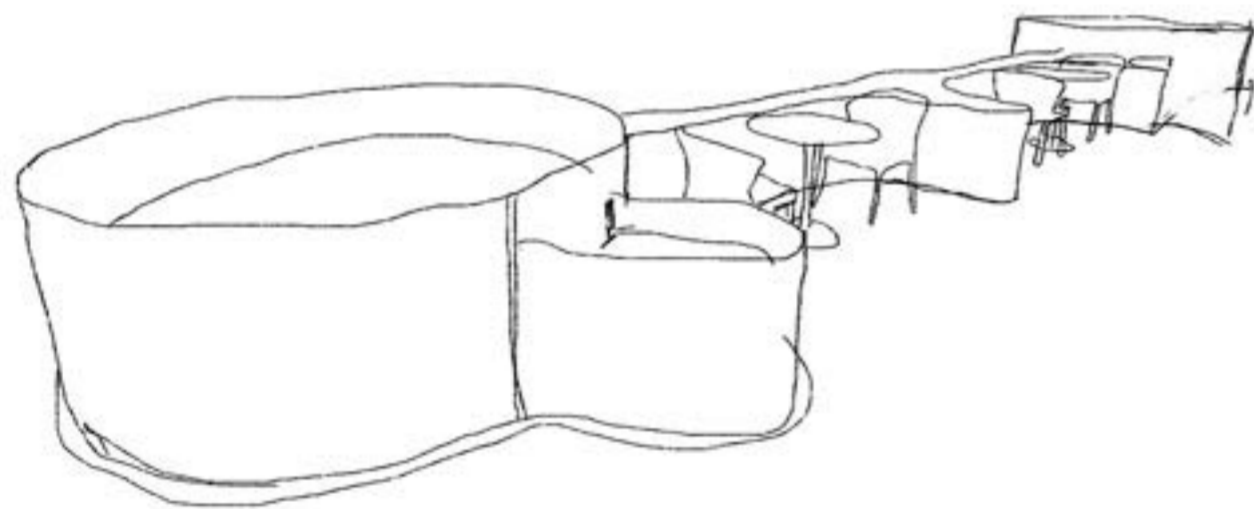
Planter Sitting Area



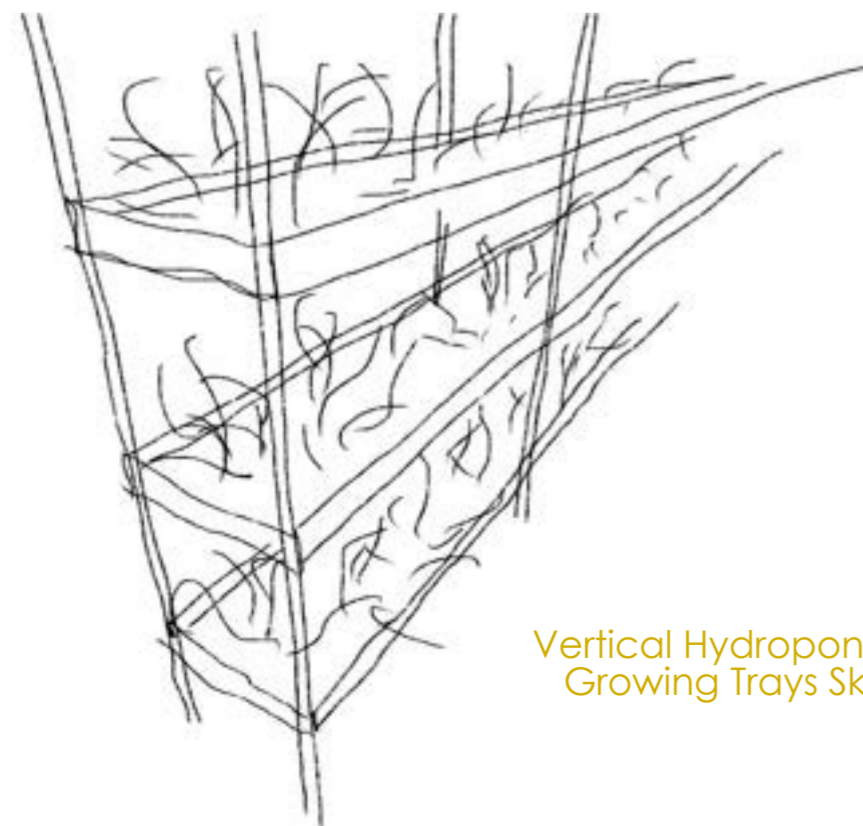
Ground Floor Plan

- ▶ Entry / Exit
- ↔ Primary Route
- ↔ Secondary Route

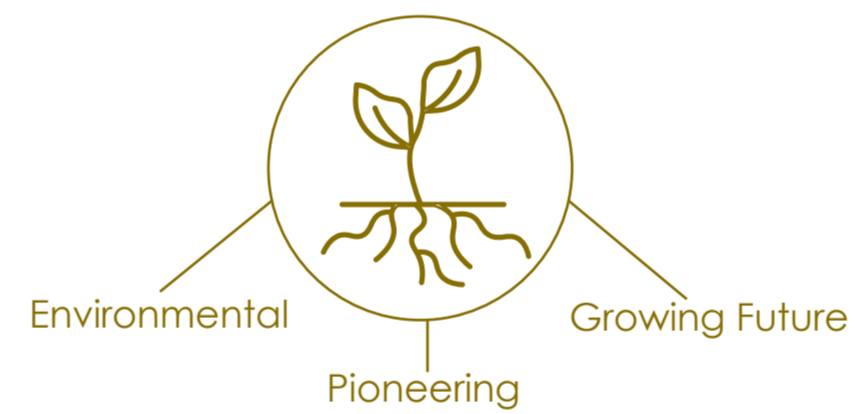
- ⬆ Stairs Upwards
- ♂ Male Toilets
- ♿ Disabled Accessibility
- 👤 Staff and Back of House Services
- 🌱 Potting Workshop
- 🌿 Urban Hydroponic Farms
- 👥 Reception
- ♀ Female Toilets



Finalised Planter Seating Area Sketch



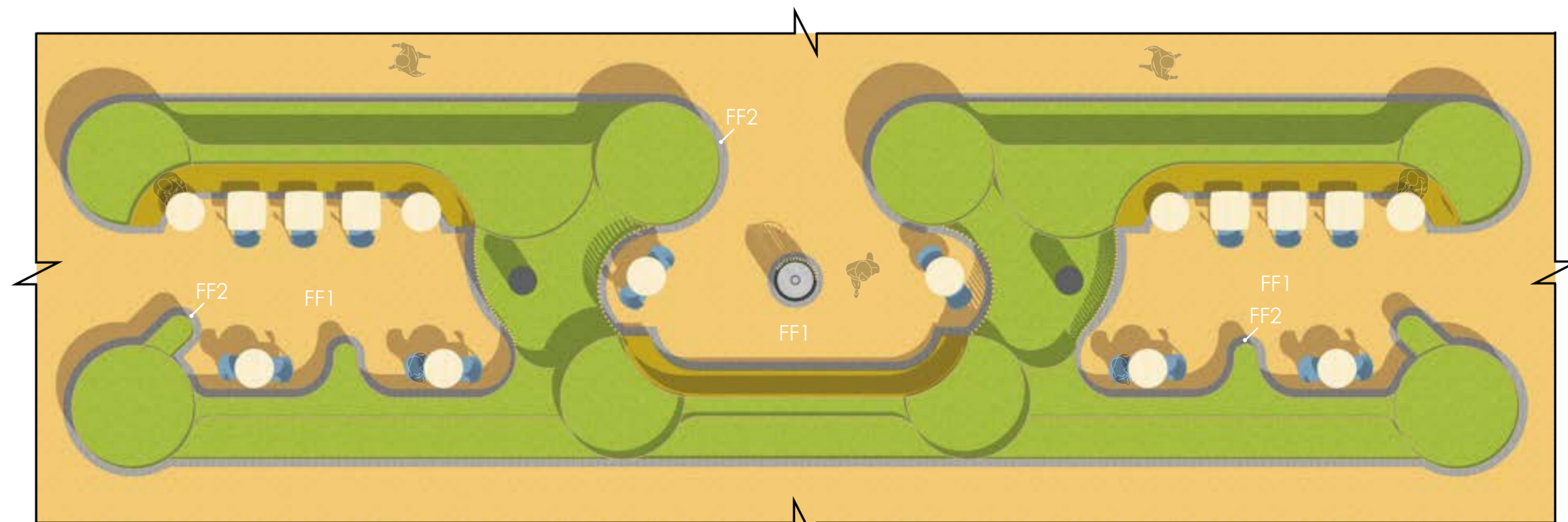
Vertical Hydroponic Farm Growing Trays Sketch



6: Lift & Downstairs Sitting Area



7: Void & Garden Staircase



Rendered Ground Floor Sitting Areas