



THE PROJECT

Parasoul is aimed at children ages 11-16 and embraces **diversity** and **inclusion**. It offers immersive experiences and opportunities for children to socialise and learn essential life skills after school and during the weekend. Due to the decrease in youth clubs across the UK, Parasoul aims to fill this gap by offering a space where children feel **welcomed**, **secure** and **supported**. It's mission is to bridge societal divides and promote children's mental health and well-being.

CONTEMPORARY ISSUES

Across the UK, there are a few places to go that allow children an **escape from their daily routines**. The influence of technology often results in children experiencing secondary socialisation, through social media, which can **overshadow fundamental life skills**. Additionally, children from disadvantaged backgrounds may **lack exposure to the same opportunities** as their peers. Consequently, children may experience adverse mental health effects or become involved in gang activity to seek a sense of belonging.

BENEFITS OF PARASOUL

Interactive zones, relaxation areas including sleeping pods and washing facilities

Enhance thinking and develop social and emotional skills

Give children the ability to deal effectively with demands and challenges of life



Bringing children back together

PARTNERED WITH ACTION FOR CHILDREN



Parasoul has partnered with a charitable organisation called Action for Children. Action for Children strives to support, care and safeguard children and young people, enabling them to improve their lives and achieve their full potential. These values mirror Parasoul's vision and ethos.

The Action for Children team offers individual support sessions within the retreat and assists by training staff to strengthen their skills and enhance the well-being of every child.



SITE LOCATION - *The Great Central Railway Leicester*

The Great Central Railway, sits in the heart of Leicester, England. It was built in 1897 therefore, holds immense historical value. It is situated in close proximity to both the city centre and residential neighbourhoods, and there are two secondary schools within the vicinity. The front of the building has been transformed into a pedestrian-only zone, ensuring a safe and secure pathway for children.





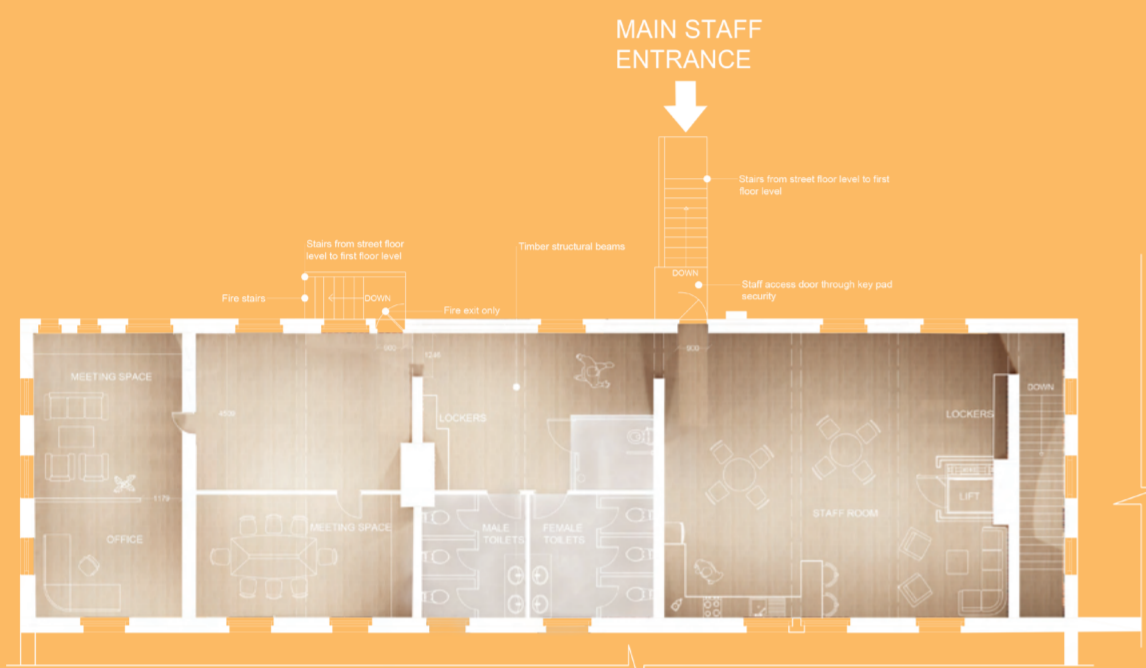
SECTION A-A

Reception area, Suspended lighting fixture over outdoor seating, VR pods, Arts and crafts, Learning zone, Raised floor level 100mm, Mezzanine, Vertical farming walk through



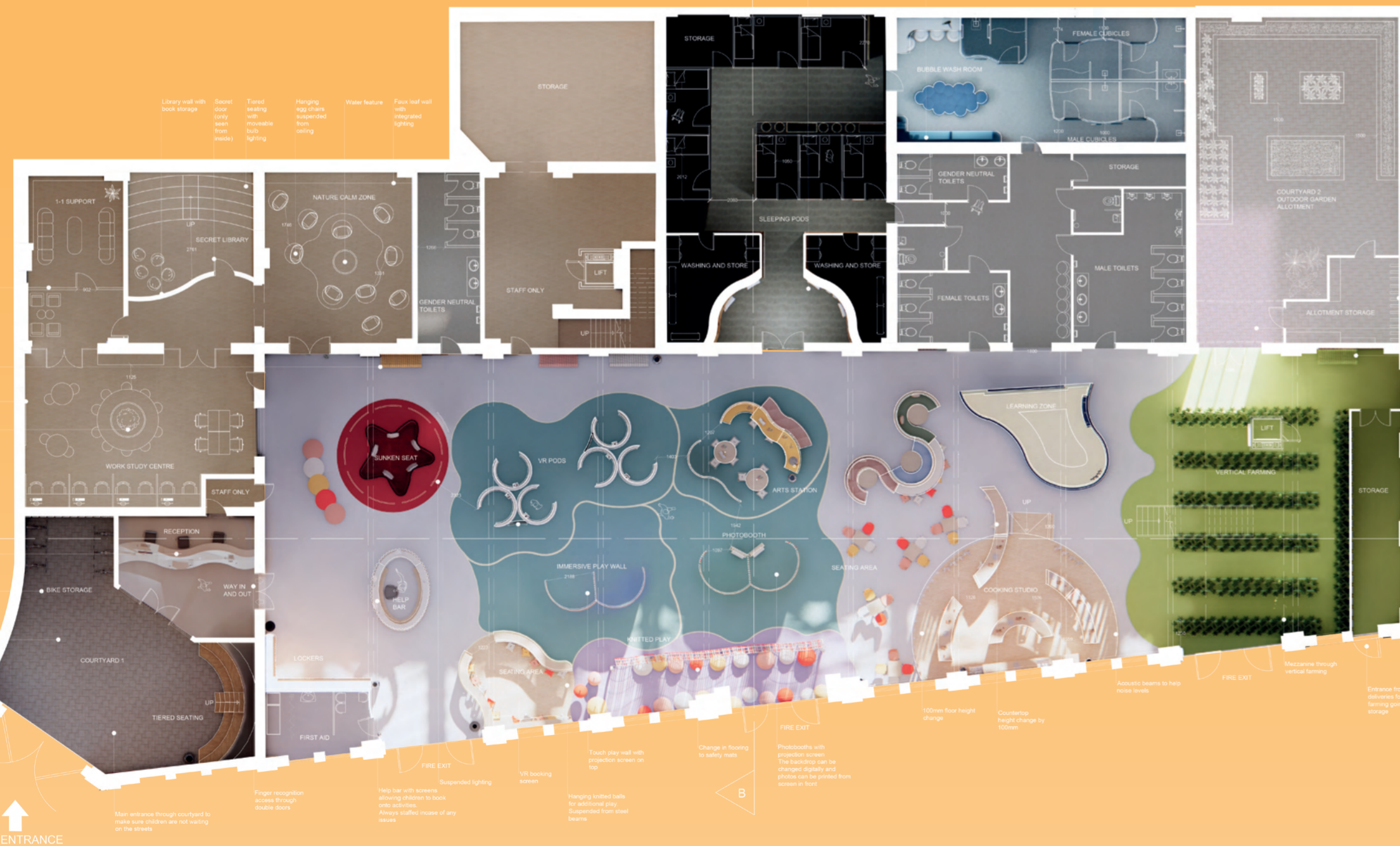
SECTION B-B

Kidult play seating, Photobooth, Training unit, Clipping and mail area, Terrace seating pods, Street floor level

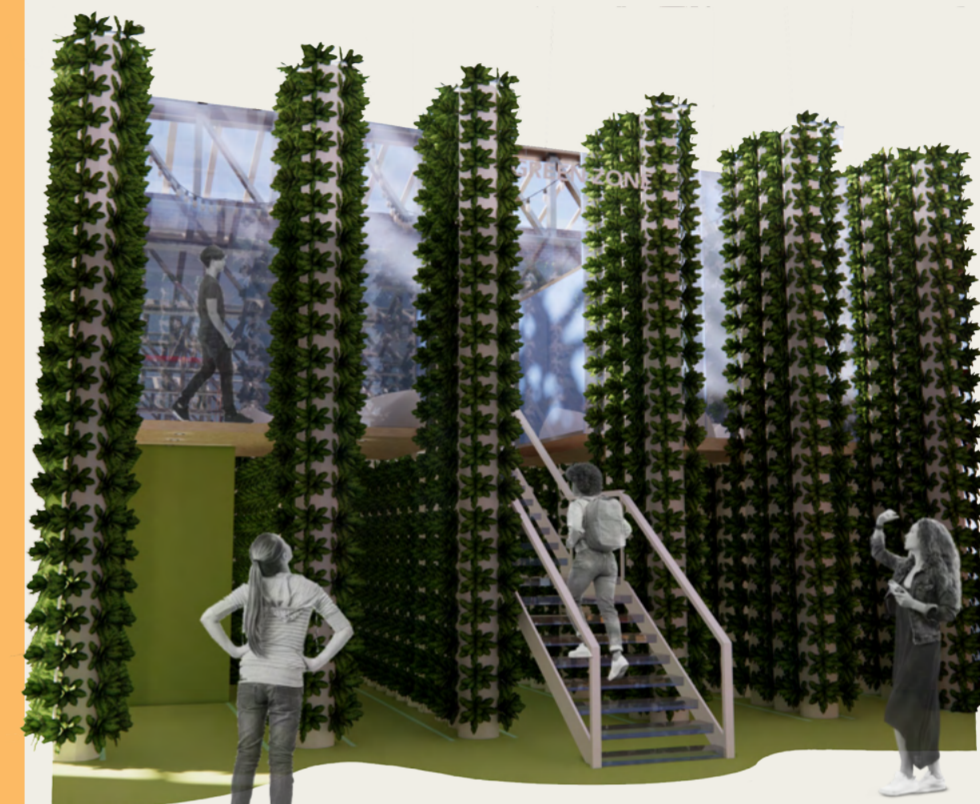


FIRST FLOOR PLAN
Utilised as a staff area

MEZZANINE PLAN
Through the vertical farming

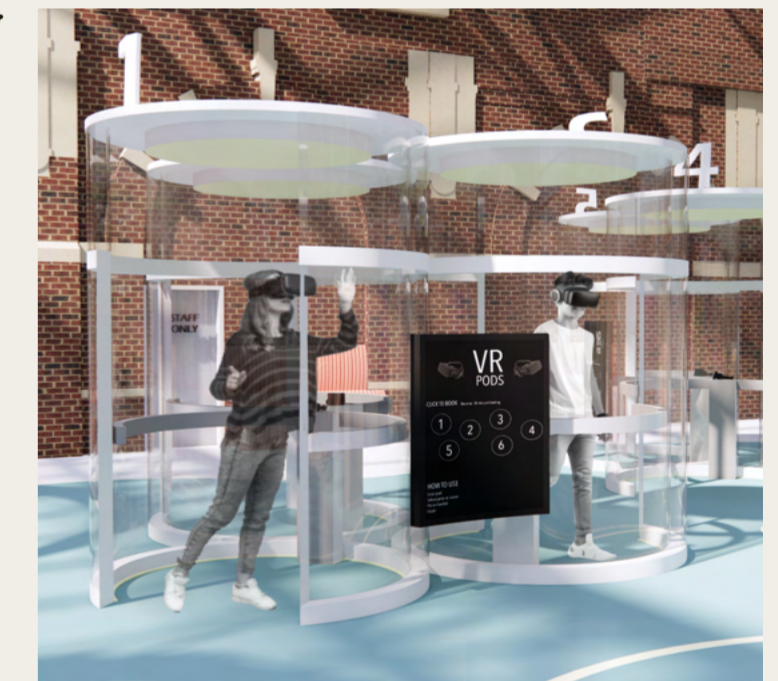


GROUND FLOOR PLAN



VERTICAL FARMING

In pursuit of Parasoul's ethos, vertical farming has been implemented to reinforce the significance of providing fresh produce and to educate children on how to grow their own. In addition to reinforcing a valuable life skill, this promotes healthy eating habits, which can positively impact mental health and well-being.



VR PODS

The VR pods offer an opportunity for underprivileged children to discover new experiences they may never have encountered, such as visiting exotic beaches, riding roller coasters or even simply exploring a forest.

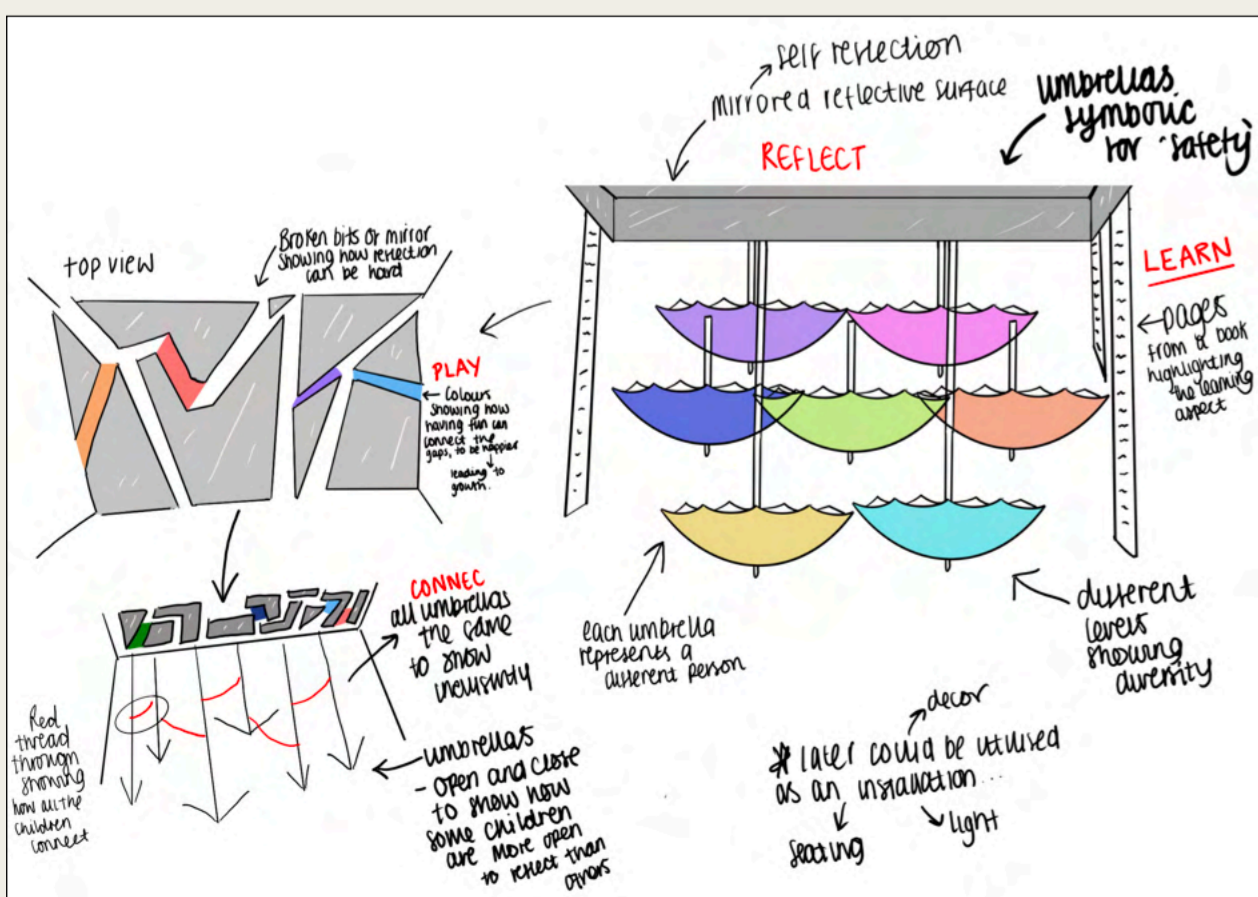
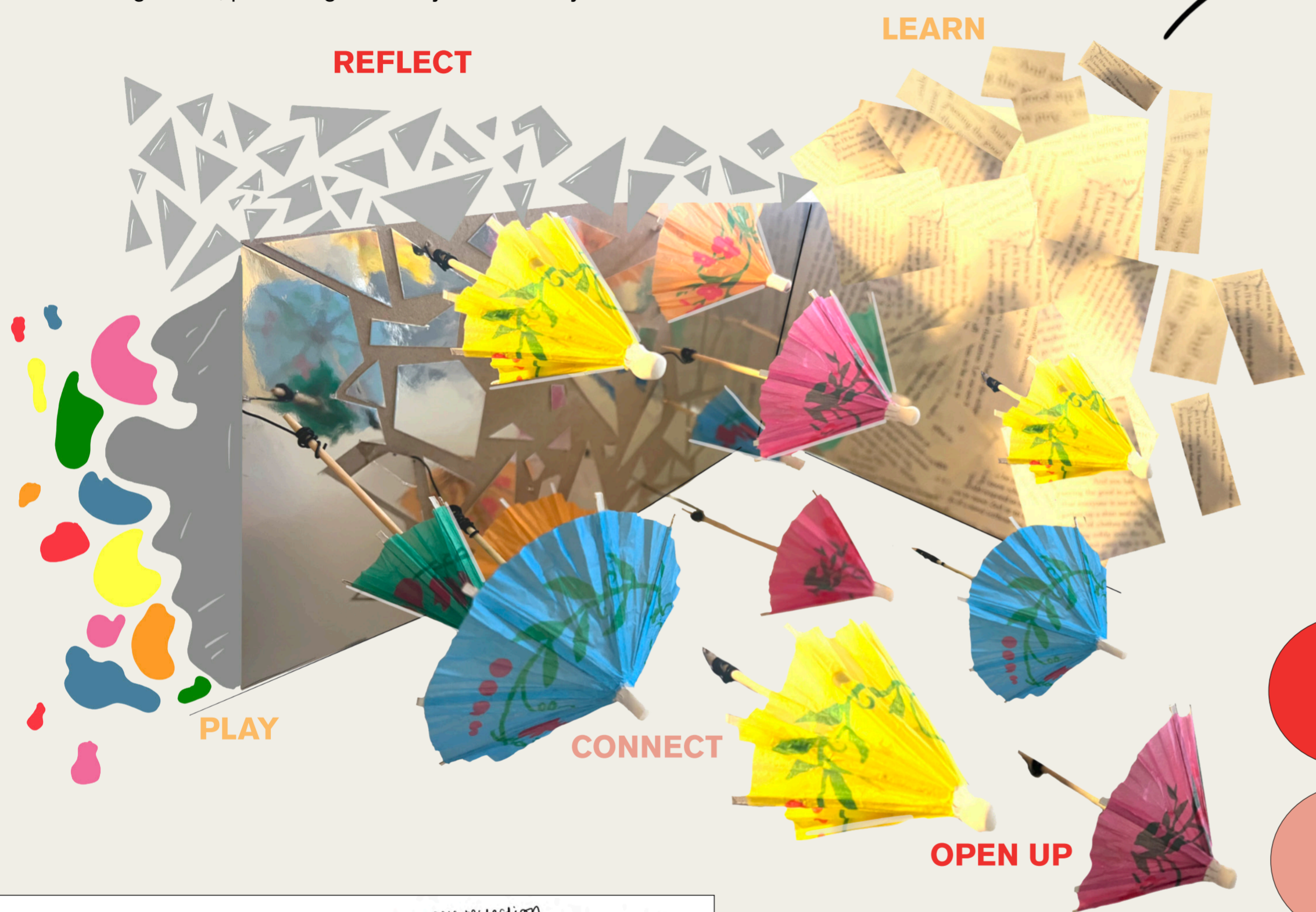
MAIN SPACE MATERIAL BOARD



parasoul

CONCEPT

The concept behind Parasoul stems from the idea that each child resembles an umbrella, some more willing to open up than others. The difference in colour, shape and size of each umbrella represents how Parasoul welcomes children from all backgrounds, promoting inclusivity and diversity.



Fragmented mirrors gradually joining together, show the purpose of the retreat. Parasoul aims to support children in being able to reflect on their emotions, with the support from Parasoul, children will feel more confident in open up to others.



BRANDING



HELP BAR

Children will have the opportunity to progress within the Parasoul hierarchy and take on new challenges and responsibilities, such as educating others. One of the main benefits of Parasoul is it offers children the opportunity to divert away from their mobile devices and encourage them to immerse themselves in the present moment.



COOKING STUDIO



BUBBLE WASH ROOM

The bubble wash room provides children with access to cleaning facilities such as showers and sinks. Providing these can decrease bullying and increase confidence in children.



SLEEPING PODS

30% of children live in poverty in the UK and therefore, do not have sufficient access to cleaning facilities.



The sleep pods offer children a space to rest their head. Sleep deprivation is common in most children / teenagers in the UK. An increase in sleep can help with behaviour issues and school performance.



97% of 13-16 year olds do not get the recommended amount of sleep every night.