

THE TOUGH LOVE EXHIBITION



“IF YOU ARE NOT PERSONALLY FREE TO BE YOURSELF IN THAT MOST IMPORTANT OF ALL HUMAN ACTIVITIES - THE EXPRESSION OF LOVE - THEN LIFE ITSELF LOSES IT'S MEANING” - HARVEY MILK



RECEPTION



THE CONCEPT:

The Tough Love Exhibition will be a charity funded experience that hopes to provide the LGBTQ+ community with representation and a sense of support, in a location that is lacking to provide much care and direction for LGBTQ+ people and a world where current statistics suggest a worsening in the community's safety and rights. Through educating society on the vast LGBTQ+ history and **gaining donation from the public, this organisation hopes to fight for rights that** are currently being taken away and attempts to gain more freedom and pride that hopes to stop future attacks on the community's identity.



The building is located at the heart of Leicester's city centre on 7 High Street and is a grand, grade two listed building built in the early 20th century. Leicester is sat central in England, found in the midlands and has a rich and unique history dating back almost 2000 years, especially when it comes to diversity. However, it is disheartening to see the lack of representation Leicester currently holds for LGBTQ+ people.

THE ISSUE

LGBTQ+ HATE
CRIMES HAVE
RISEN BY

32%

HOMOPHOBIC HATE CRIMES MORE THAN DOUBLED IN THE SPACE OF FIVE YEARS, SOURING BY 32%; THESE STATISTICS DO NOT COUNT FOR THE UNREPORTED VICTIMS MEANING THIS FIGURE WOULD BE HIGHER.

In a world where the community once felt they were moving forward, current statistics actually highlight a reverse in LGBTQ+ safety and representation.

4% OF LEICESTER
ARE LGBTQ+

AROUND 4% OF LEICESTER ARE LGBTQ+ MAKING A POPULATION OF ROUGHLY 14,000, ALTHOUGH THIS STATISTIC ONLY COUNTS FOR THE COMMUNITY THAT ARE OPEN ABOUT THEIR SEXUALITY, MEANING THIS STATISTIC WOULD BE LARGER.

However, it is disheartening to see the lack of representation Leicester currently holds for LGBTQ+ people, seeing as it is known for being the most diverse city in England.

40% OF LGBTQ+ PUPILS ARE
NEVER TAUGHT ANYTHING
ABOUT BEING LGBTQ+ AT
SCHOOL

NEARLY HALF OF ALL LGBT PUPILS STILL FACE BULLYING FOR BEING WHO THEY ARE – AND IN ORDER TO CHANGE, IT'S ESSENTIAL TO DELIVER A CURRICULUM THAT ENCOURAGES ALL CHILDREN AND YOUNG PEOPLE TO RESPECT THOSE AROUND THEM AND APPRECIATE DIFFERENCE.

"I felt like whatever I was doing was worthless. Even if I did well in school, it wouldn't matter to people because all they would care about is me being gay"
-Zoe, Age 12, secondary school (England)

THE SOLUTION

Society needs to change its backwards perception into positive **representation. Educating society and more specifically students,** on the vast history and story of the LGBTQ+ community hopes to highlight these current backward statistics and prevent phobic hate and anxiety. The main way this exhibition boosts LGBT+ representation is through its diverse stories that the media and general governmental hierarchies are too afraid to speak about. Some other ways society can solve these problems is:

- Celebrating LGBTQ+ History and Events
- Incorporating Gender-Neutral alternatives to daily life, for example: unisex toilets, pronouns.
- Teaching about LGBTQ+ relationships earlier in education.



THE TARGET DEMOGRAPHIC

The target audience for this project is 14-21. Groups of people who are still in education are a perfect target for this project as **they have more social influence; they start to make their own opinions on topics such as the LGBTQ+ community, based from their surroundings and current knowledge; they are also very impressionable,** so teaching them about the correct things earlier in their lives is better in the long run.

- Almost half of LGBT pupils (45%) who are bullied for being LGBT never tell anyone about the bullying -

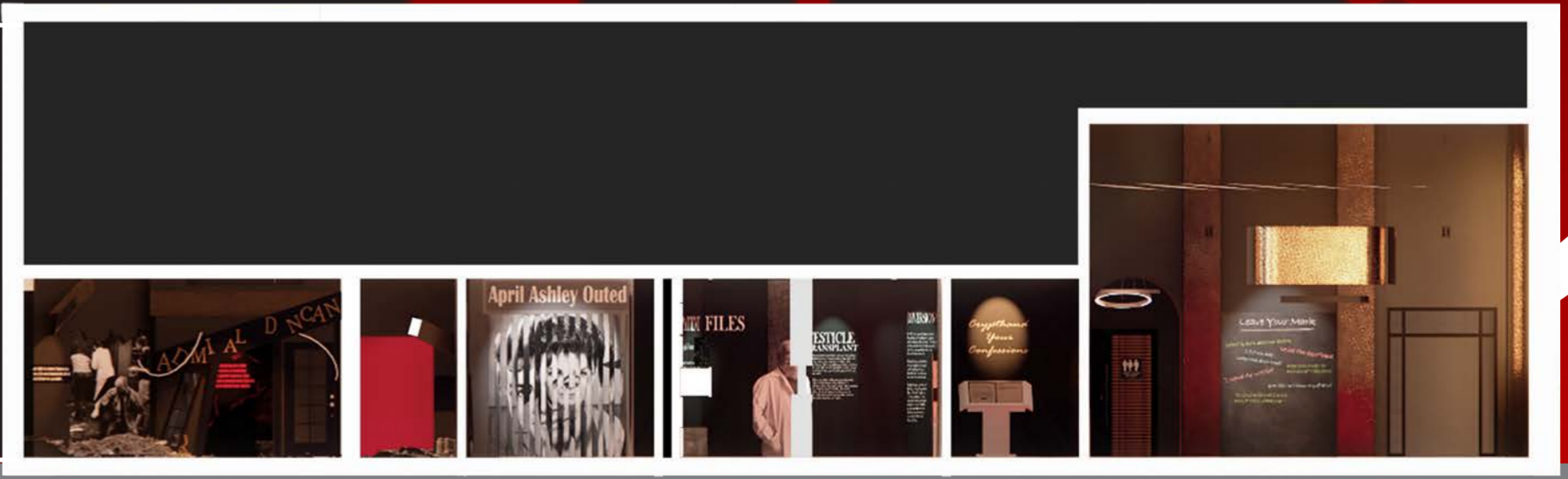
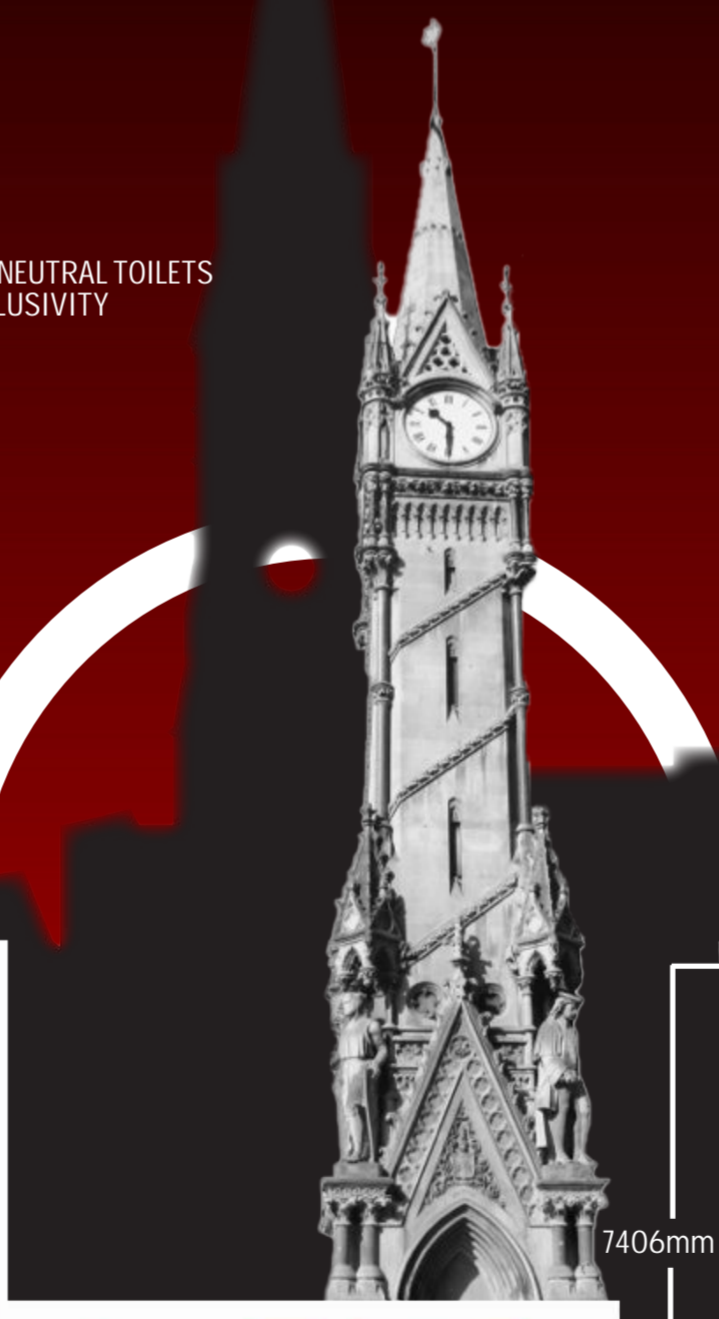
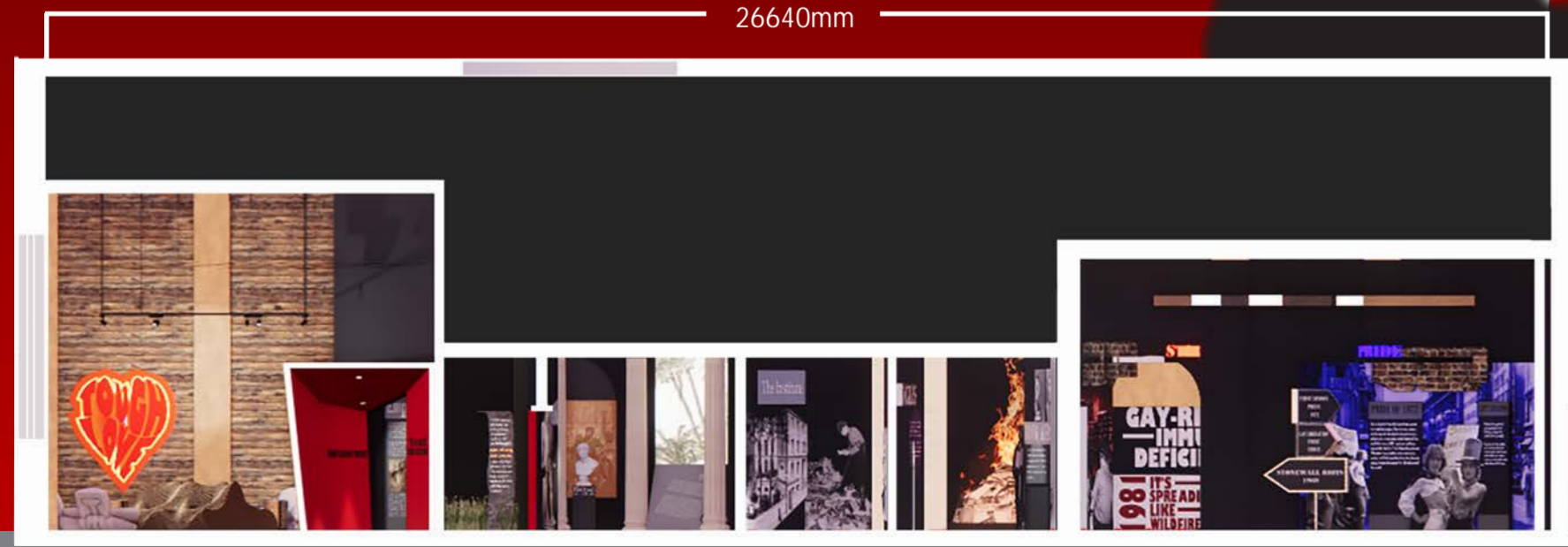
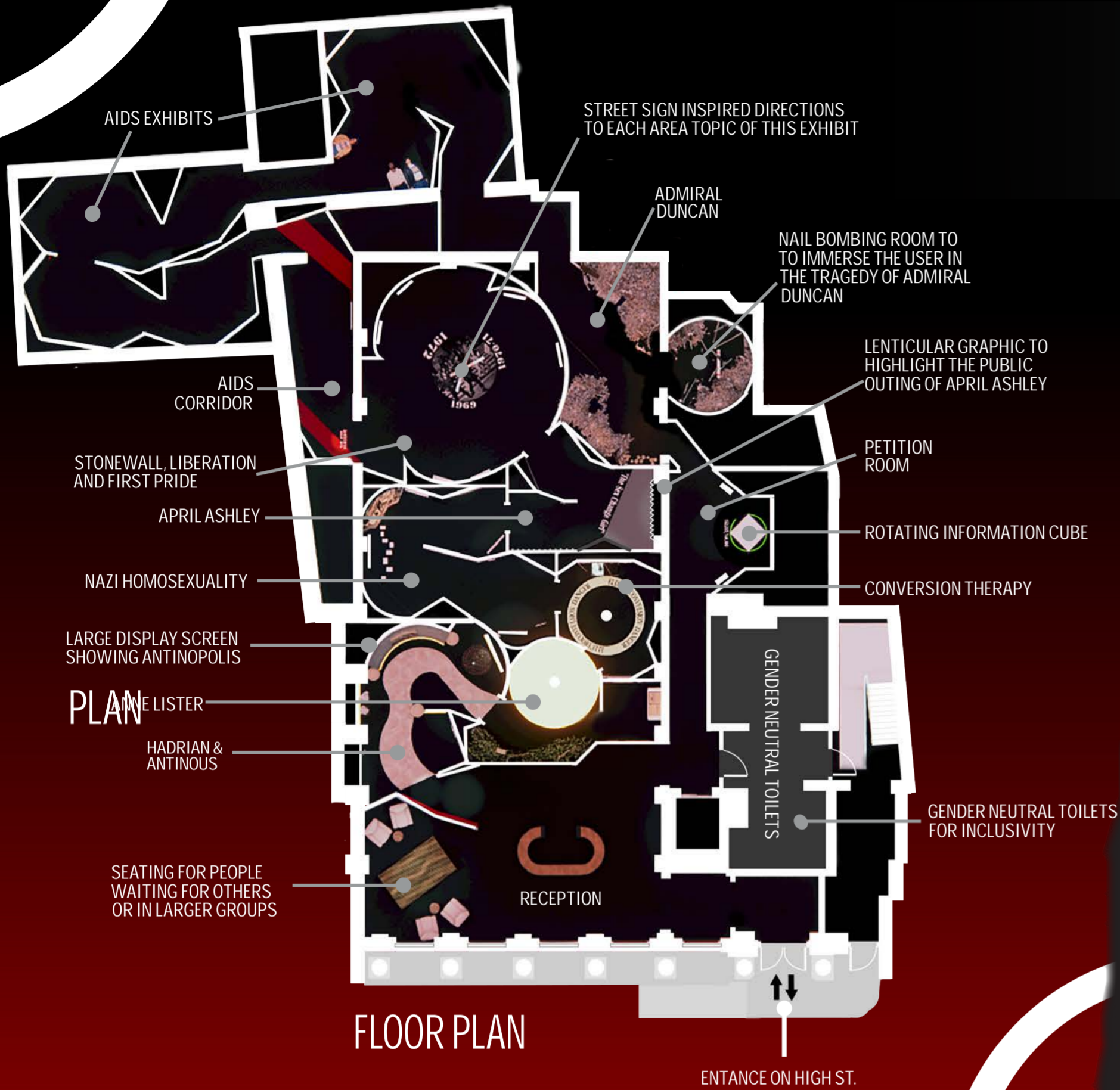
creating this safe space for them, where they can come and learn about their history and be proud of who they are is a big step in creating positive change, especially for the younger generation.

IN COLLABERATION WITH



Stonewall UK are an activist movement and charity, founded in 1989 that fight for the rights of LGBTQ+ communities both nationally and globally, in schools, work places and against public hate crimes. Stonewall have been fighting for the freedom, equity and potential for this community for thirty years.

Having Stonewall UK as a collaboration on this project provides a funding for the scheme, as well as a support in the fight for LGBTQ+ protection and rights. In the future of this project, Stonewall office and therapy spaces would be found above, utilising the other floors in the building; this would allow for positive change in society and growth for the organisation.



SECTION A-A

SECTION B-B

THE EXHIBITION

The journey starts with a large, open plan reception, where you learn of the exhibitions branding and its collaboration with Stonewall UK. This space intends to potentially house groups of people, therefore, a **seating area is provided as well as a lot of standing space; toilets can also be found just off of the reception** which are gender neutral for inclusivity purposes.

The experience itself consists of eight exhibition spaces, ranging from 111AD to 1999; such historical stories include Hadrian & Antinous in Ancient Rome all the way to the Admiral Duncan Nail Bombing of 99' in London. These stories are purposely hard to listen to and learn about in an attempt to alter societies opinions on the LGBTQ+ community to gain support.

The experience ends with a petition space that allows guests to learn about a weekly current issue within the community, made famous through the news after their experience through the exhibitions. The guests end up, once again, in the reception which allows them to leave the same way they entered.



ANNE LISTER EXHIBIT



STONEWALL, GAY LIBERATION & FIRST PRIDE EXHIBIT



AIDS EXHIBIT



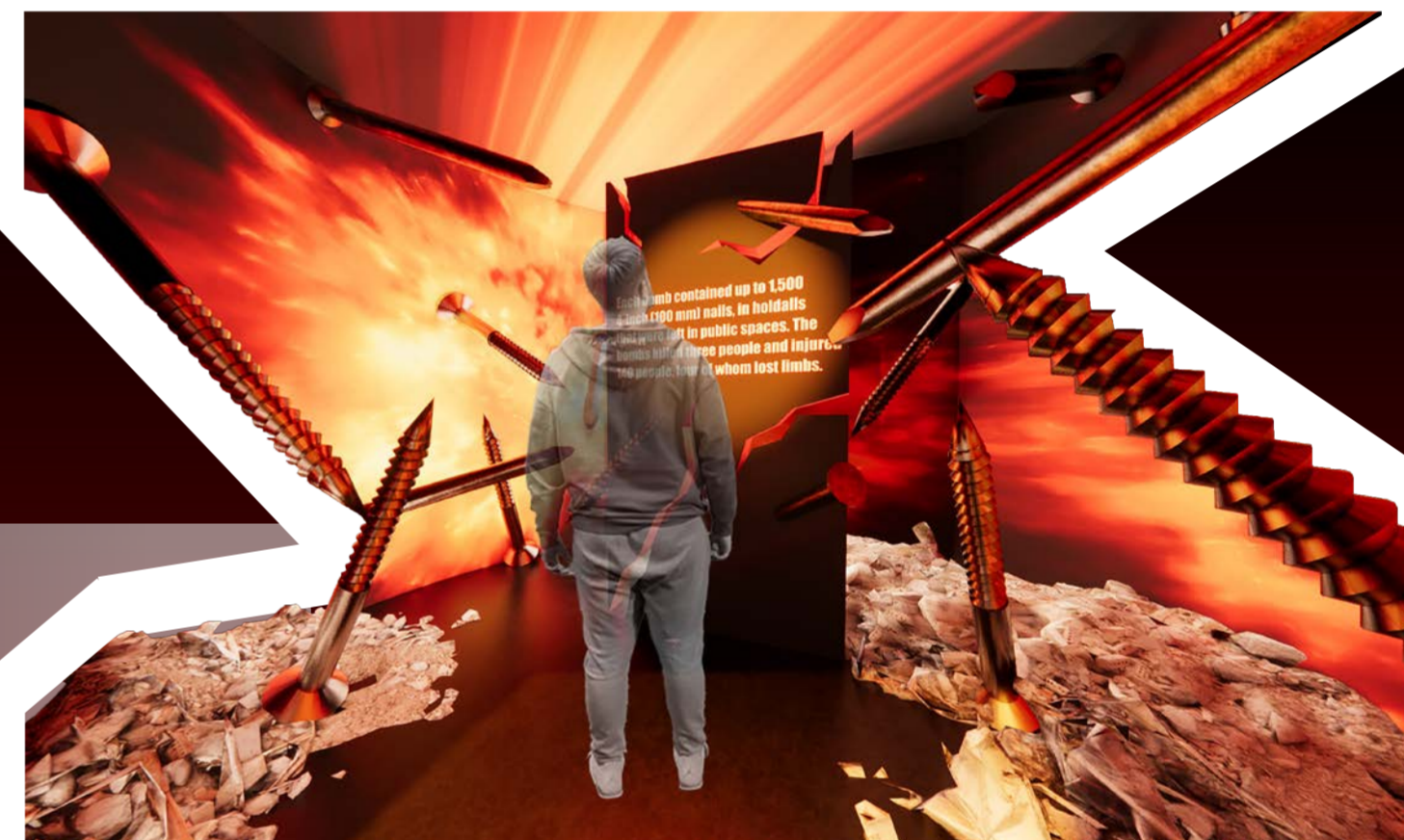
HADRIAN & ANTINOS EXHIBIT



MAGNUS HIRSCHFELD & NAZI HOMOSEXUALITY EXHIBIT



CONVERSION THERAPY EXHIBIT



NAIL BOMB EXHIBIT



PETITION ROOM

THE DESIGN

Due to the buildings intimidating existing structures and detailing, it didn't seem fitting to the subject matter of the project to keep these visible due to the contemporary potential of the scheme; they seemed to juxtapose each other. The fluid layout of my exhibitions was one way the design was broken up from the details, as well as the false ceilings to hide the building to suit the exhibition in a more purposeful way; it gave me more opportunities rather than challenges.



ADMIRAL DUNCAN NAIL BOMBING EXHIBIT