

TIMEQUEST LEICESTER

Questers won't just learn about Leicester's history- they will live it, connect and leave feeling hopeful for what is yet to come!

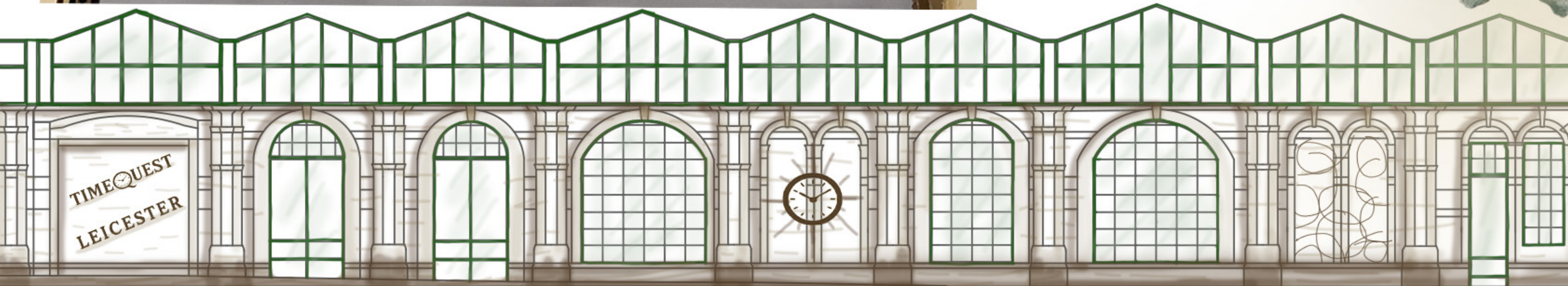


Location: Old Grand Central Railway Station
Leicester, LE3 5DJ

Visitors can explore Leicester's rich past within the old station, only by uncovering layers of its history can we truly inspire and shape the future.

Leicester's past is at risk of being forgotten- without it, the future is uncertain. TimeQuest immerses visitors through the city's key moments, collect tokens on how we have progressed, and pioneer what is yet to come. Many fascinating topics are explored such as innovations, civic affairs, leisure, faith and much more.

Through interactive exhibits and activities, visitors of all ages can uncover lost stories, reflecting on these pivotal moments. No matter if the whole story is explored or not, all can imagine their future and feel a part of Leicester's story.



INSPIRATION



There are many topics explored within the exhibition, allowing every type of visitor to feel engaged and spoken to. Here are some of the initial ideas.

TIMEQUEST LEICESTER

Scan me:
Video showing pivotal
moments in Leicester's
past.





Visitors can sit and relax in the coffee house cafe, allowing them to connect with others and reflect.



Visitors will enter the final zone, the future. Here they can imagine their own future through VR or sit and contemplate what they could bring to Leicester's story.



Visitors will go through many exhibitions celebrating the past. This specific one communicates Roman life in Leicester.



Visitors will enter an introduction space where they will be told the quest. The locations's history will also be present.

VISITOR JOURNEY

Visitors will explore Leicester's past, gaining knowledge on the city's history. After collecting tokens and understanding the key moments, this will inspire what could happen in the future. Visitors can enter their own future through VR or sit in the reflection space. Talks can also occur in the reflections space, on matters such as fighting inequality and black history.



VISITOR JOURNEY



Welcome Time Questers! Leicester's past is full of crucial moments- but some are being forgotten. Without your help, the future can't be imagined, that's why we need you. Travel through time and discover Leicester's story; collecting tokens within the space and help pioneer the future. No matter your journey, every decision you make matters. So, get ready, your quest through time awaits.

While exploring the past can you reflect on what you can add to Leicester's story? Are you an innovator, are you accepting of other cultures, do you stand up for what is right? Reflect and see how you can add to this amazing city.



Salve, Time Questers- welcome to Roman Leicester, 43AD. I'm Aurelia, and have come to the Macellum, our amazing market hall to buy some berries and eels for my supper. These have all been locally gathered and prepared today. There's lots to discover here, so explore and see what us Romans ate, wore and did in our spare time. Don't forget the token!

While exploring can you reflect on what type of diet you have, are you a vegetarian, vegan, eat meat? As we move into the future we need to pick more sustainable options that support our local businesses. Think how we can make small changes so that we are practicing better eating habits.



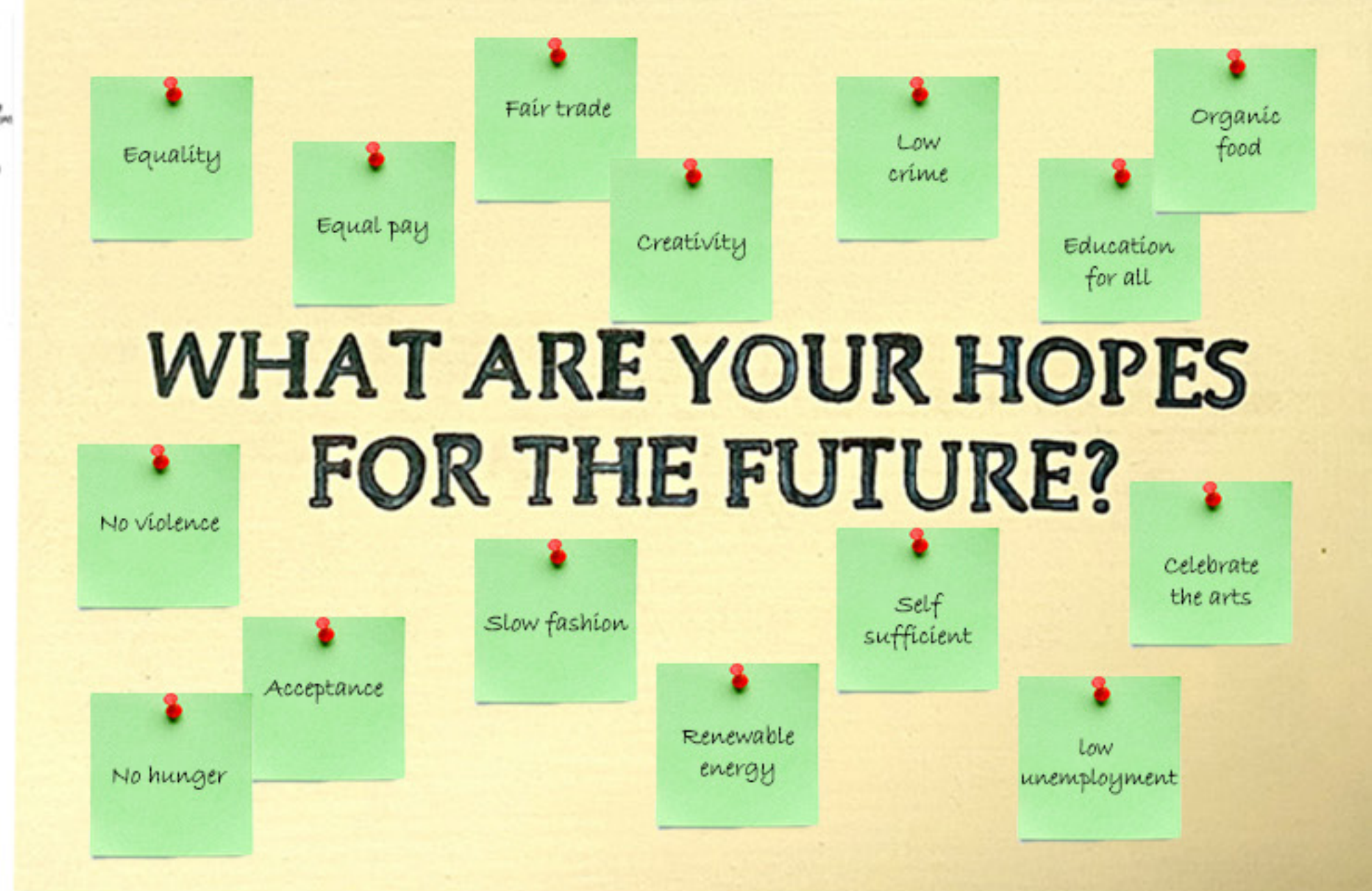
Good day, Time Questers- welcome to the Coffee Houses of Leicester, 1877 AD. I'm Arthur and in support of the Temperance Movement I've come to a coffee house set up by Thomas Cook. We enjoy coffee, warm food, card games and good company- all without alcohol. Take a break from exploring time and enjoy a safe, friendly space to relax. Oh, and remember to find the token!

While relaxing in the cafe, can you reflect if you are a good member of your community. Do you act in a socially positive way? Are you respecting others? Think how you act and if this could be improved to provide a better environment for you and others. Moving to the future, its crucial people feel safe, accepted and have pride in where they come from, be the change to help this.



Well done Time Questers, you have successfully discovered Leicester's past! However, you aren't quite done yet- we hope you feel inspired by this amazing city's history, now what do you want in your future? Reflect and imagine what is yet to come, so your future is a part of Leicester's story.

There will be characters in every exhibition, suggesting what visitors could do to make a difference in their own lives to support a better and brighter future. What can you bring to your community?



GLASS ROOF TO PROVIDE HEIGHT AND AWE TO THE ENTRANCE & INTRODUCTION SPACE. (8250mm FLOOR TO CEILING HEIGHT)

LOWER HEIGHT SPACES TO IMMERSIVE VISITORS INTO PAST ZONES. FEELS MOODY AND MORE ENCLOSED. (3000mm FLOOR TO CEILING HEIGHT.)

ENTRANCE

QUEST INTRODUCTION & LOCATION'S HISTORY

ARTIFACT DISPLAY

ROMAN LIFE EXHIBITION

CRAFT STATION

STAFF ONLY ACCESS; STORAGE

FIREPLACE

MEETING TABLE

PANELLED LIGHTING

SECTION A-A

completing the quest they will enter the future; a double height space reflecting the deepening of Leicester's knowledge. The future can only be explored if the past has been understood and learnt from.

DOUBLE HEIGHT SPACE IN FUTURE ZONE, SYMBOLISES, AS VISITORS MOVE THROUGH TIME, THE FUTURE BECOMES MORE HOPEFUL, BRIGHT AND DEVELOPED. (250mm FLOOR TO CEILING HEIGHT)

SECTION B-B

Visitors will be able to collect tokens for every single exhibition. This creates a reminder on all that has been explored in Leicester's past. It also encourages reflection on what could occur in future.