

TRACE HONG KONG

An exhibition for 2019 Hong Kong Protests

A series of the longest and largest protests in Hong Kong's local history started in June 2019. In response to the Hong Kong government's attempt to use a homicide case committed by a Hongkonger in Taiwan to propose the Extradition Law Amendment Bill. This bill can extradite suspects to China under the authority of the Hong Kong Chief Executive. The criminal process is plagued by deep flaws, including lack of an independent judiciary, arbitrary detention, lack of fair public trial, and lack of access to legal representation in poor prison conditions.

The freedom of Hongkongers has been eroded to an unacceptable level. It stimulated at least 2 million people (about a quarter of Hong Kong's population) to wake up from indifference suddenly. **They fight for their freedom.** They began to pay attention to and refer to the various protests method of other countries where people fight for freedom. Protests have become a part of their lives slowly. The protests seem to stop now because of the COVID-19 pandemic. However, the government is still stalking, intimidating, arresting,

detaining and prosecuting citizens for various reasons.

This is an exhibition where visitors can decide their visit path. This exhibition aims to attract more people to know about this history, the emotions of Hongkongers since the protests, the situation in Hong Kong, and why more Hongkongers have come to live in the UK recently. They are also encouraged to be alert to the change in their liberty and human rights situation, speak up for the banned voices and **stand with Hongkongers.**



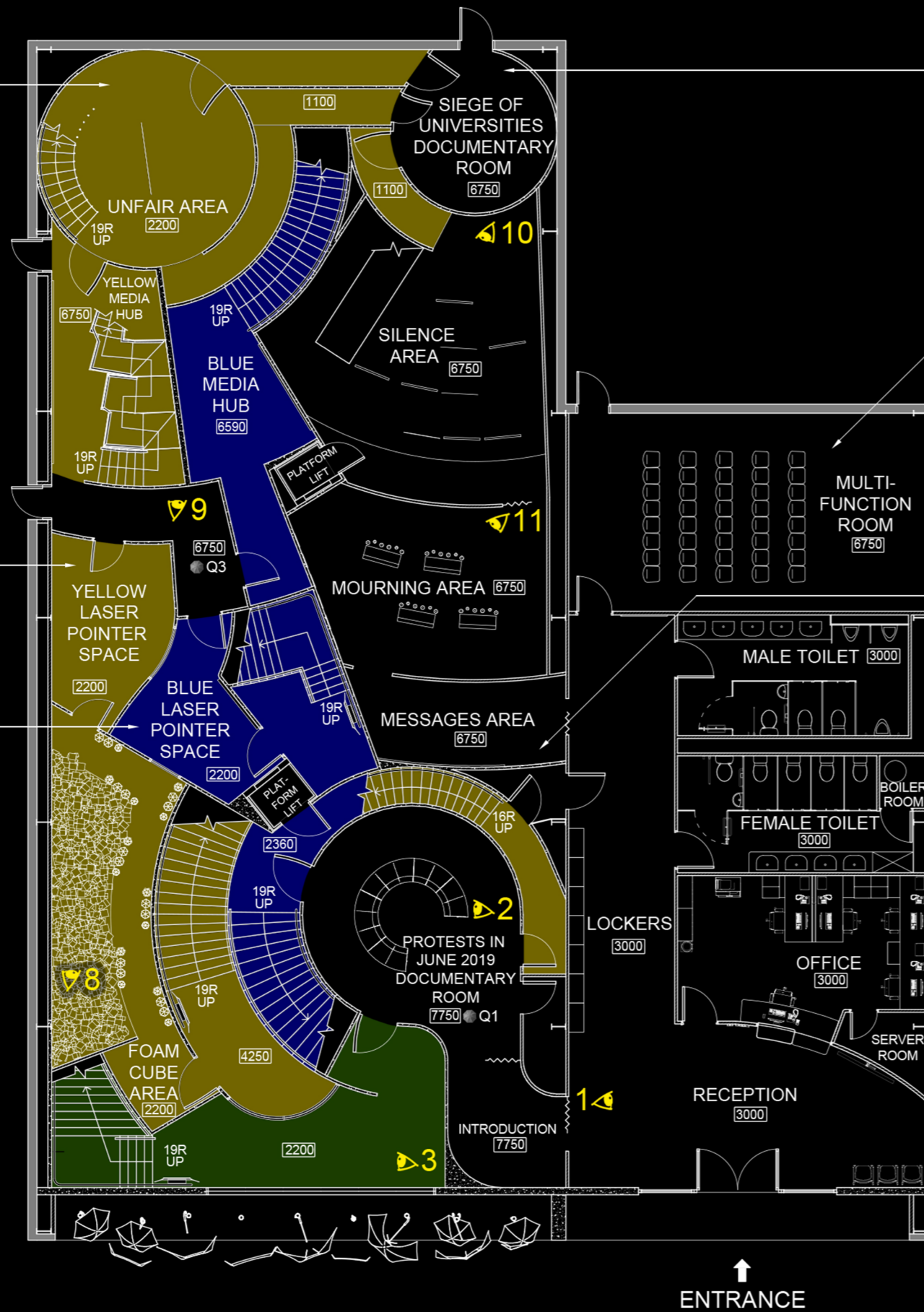
The Umbrella originated from the Umbrella Revolution in 2014. The protesters used umbrellas to resist when the police dispersed them with pepper spray and tear gas. In the 2019 Hong Kong

Protests, the police excessive increased the use of weapons to disperse protesters. Therefore, umbrellas, helmets, goggles and gas masks became their protective equipment and symbolics.

Here show the information on the detention, prosecution and conviction of the attackers and the victims of the railway station's attacks.

There are moving red lasers array like a security system. The visitors can experience the "danger" of the laser pointer

Playing the demo fragment to show how the Hong Kong Police Force view "the laser pointer as an offensive weapon"

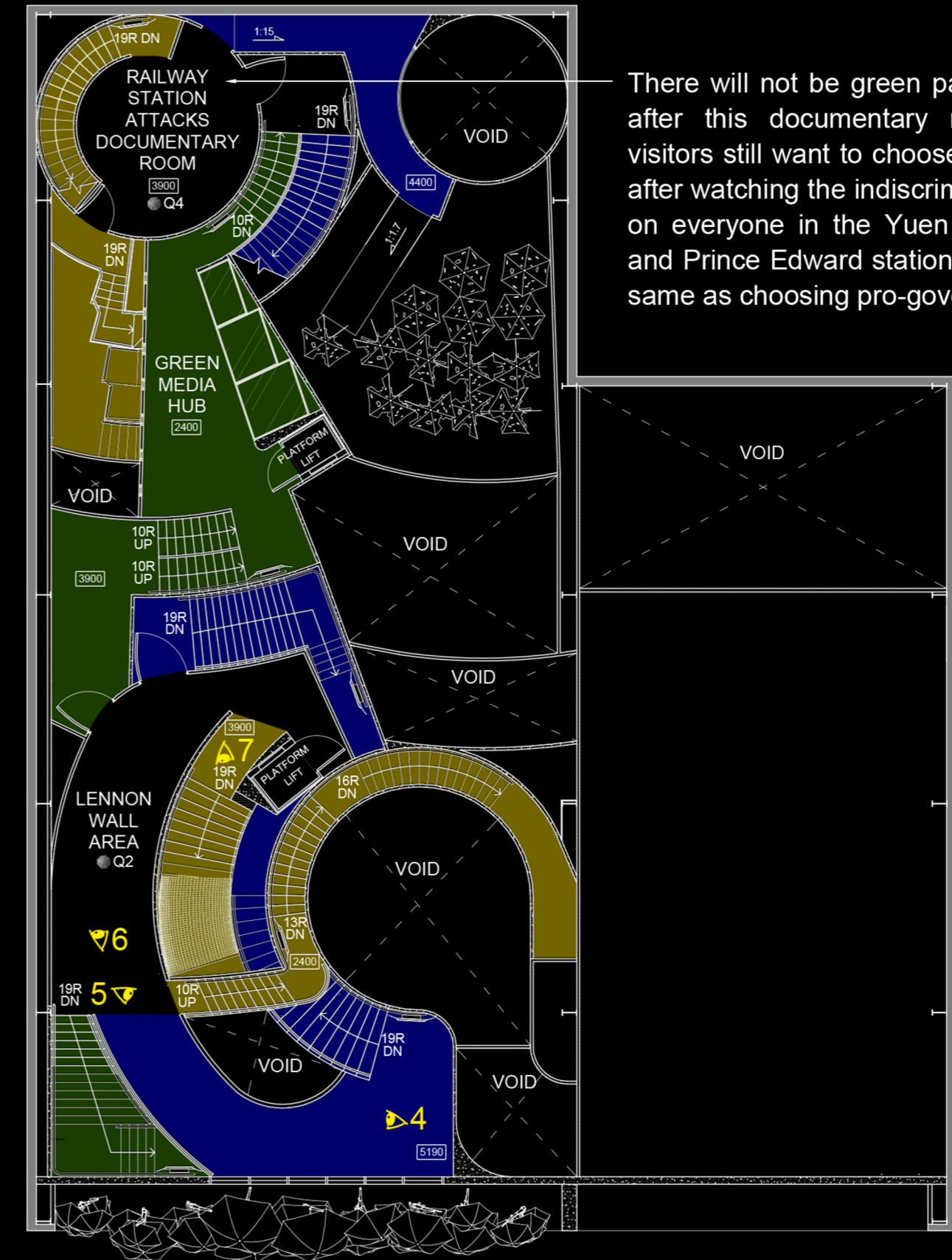


GROUND FLOOR PLAN 1:150

When tear gas is fired in the documentary, smoke will be released in the room. It makes the visitors feel like they are at the scene

It can hold a market, sell items related to the protests, and use the proceeds to operate or support the lives of exiled protesters. it can also hold mini screenings of films and documentaries about the protests (capacity for 40 people)

The visitors can leave messages on the electronic message board, and those will be sent back to the electronic Lennon Wall as part of the exhibit. Then, they can sign a joint signature in solidarity with the protesters. Finally, they also can send preset messages to their friends to draw their attention to the situation in Hong Kong



FIRST FLOOR PLAN 1:150

There will not be green paths anymore after this documentary room. If the visitors still want to choose "no opinion" after watching the indiscriminate attacks on everyone in the Yuen Long station and Prince Edward station, they are the same as choosing pro-government

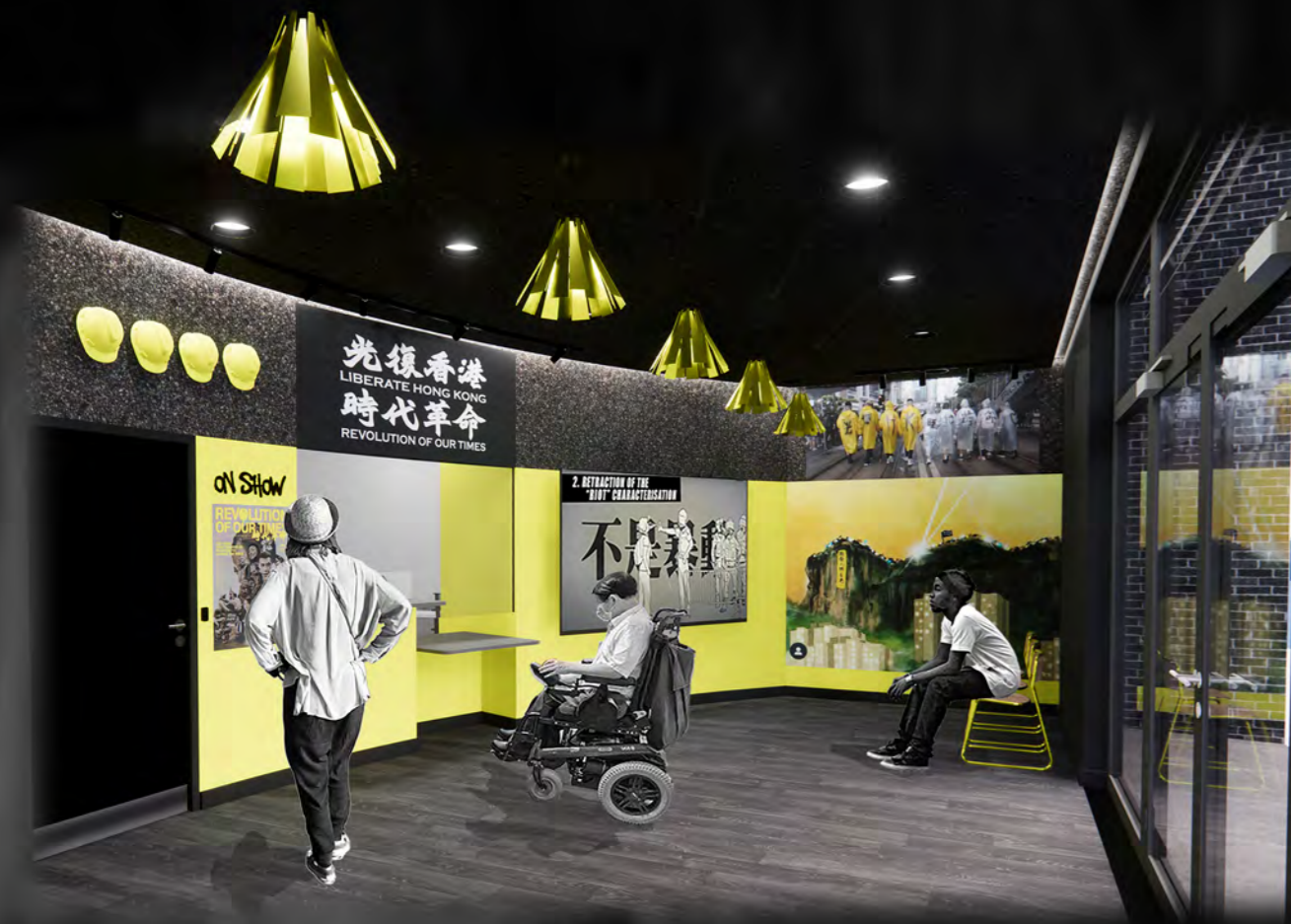
There are 4 questions to divide different paths in the exhibition. According to opinions of Visitors (Pro-protesters, Pro-government and No opinion), they can choose their paths to experience. They will feel the fluctuating emotions of Hongkongers in protests through the changes in the spaces, lighting and exhibits. The layout of the exhibition area uses these three documentary rooms as the centre, and the others disperse like ripples. It represents that whenever one incident, the subsequent happen will be affected by it. The different colours separate different paths. Yellow and black represent the protesters, blue is pro-government and green is

no opinion people. All ceilings are painted red which means China is monitoring. Many staircases were built to create keep ups and downs paths. The staircases of Yellow paths are made of metal to make more noise when they use them. It is like protesters who draw attention when walking down the street. Blue and Green paths' staircases are covered with anti-noise vinyl. There are also stairlifts and platform lifts for the disabled. When disabled is using a stairlift, other staircase users may feel interrupted. However, it is an experience. Disabled also participated in the protests and other protesters generally let them go first.

- Q1 Do you agree with the Extradition Law Amendment Bill?
- Q2 Do you agree the Lennon Wall is affecting environmental sanitation?
- Q3 Do you agree laser pointer is dangerous?
- Q4 Do you agree all victims are protesters?

1 RECEPTION

All visitors check-in at the reception and get the smart bracelets. It is for the locker to keep their belongings and go through or back to the paths. But they do not be told that the bracelet will trace them. The bracelet will beep when they wear yellow or black clothes or look young and are at the yellow path. And any visitors staying there for more than 15 minutes will also trigger the bracelet.



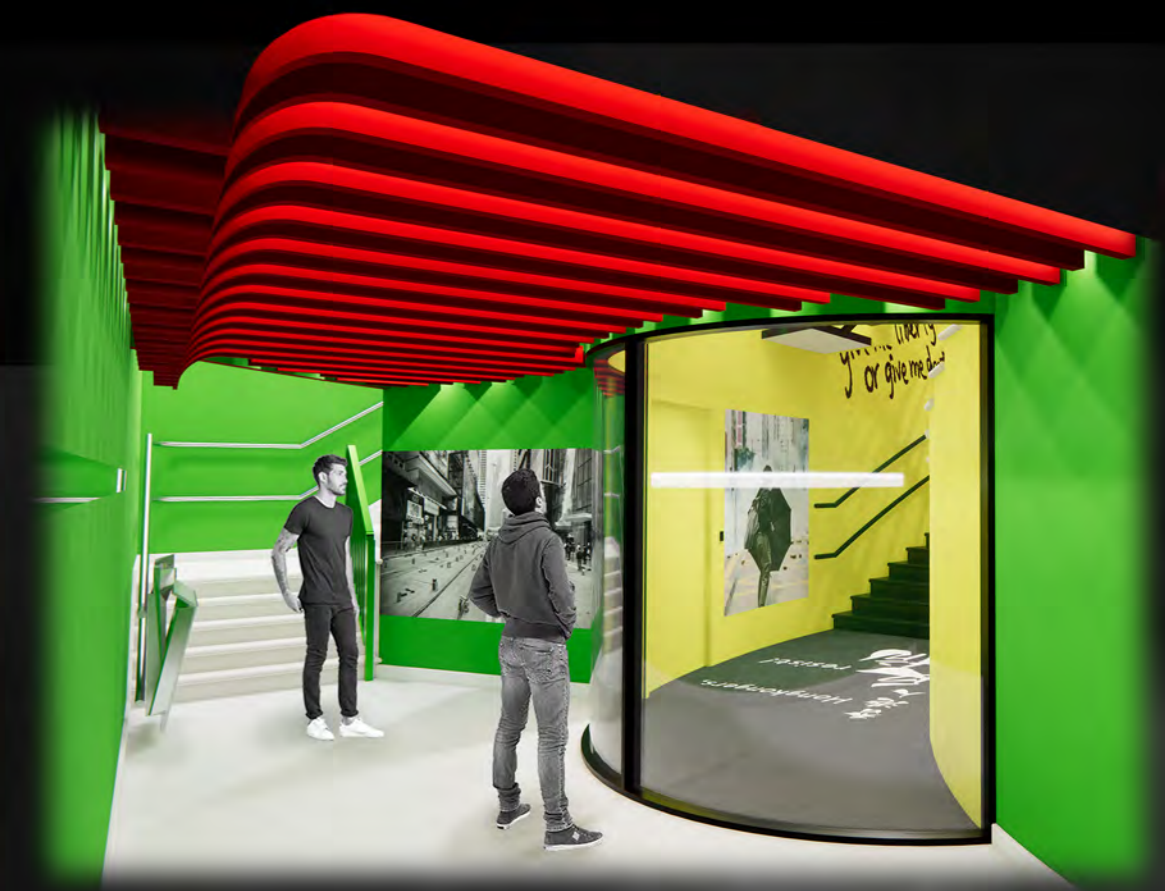
2 DOCUMENTARY ROOM

The documentary is projected on the over 5m high wall around this room. When the tear gas is fired in the documentary, some smoke will be released. Visitors will feel like they are at that scene.



3 LENNON WALL (GREEN PATHS)

'No opinion' represents those who does not care what happens, so there is a lack of exhibits on the green path. The visitors need through windows to watch exhibits on other paths.



5 LENNON WALL (YELLOW AND BLUE PATHS)

All exhibits are only displayed based on the points of view of different paths. Densely plastered posters and graffiti on the walls of the narrow Yellow path feel too frequent and stressful. On the Blue path, only posters and graffiti supporting the government's elimination of protesters and their violence during protests are displayed.



4 LENNON WALL

The Lennon Wall in Hong Kong was inspired by the original in Prague. Hongkongers posted colourful post-it notes, posters and graffiti expressing messages advocating for freedom and democracy, information about protests and their dissatisfaction with the Hong Kong Government. Even if the visitors choose a different path after the first Documentary Room, they will see each other in the open space. It is like Hongkongers with different opinions could still communicate at the initial stage. They also hear occasional sounds of tear gas and rubber bullets being fired in this area as if that time on the street.





6 ELECTRONIC LENNON WALL

The electronic Lennon Wall show those post-in notes from Hong Kong Lennon Wall and the messages from the message area left by visitors.

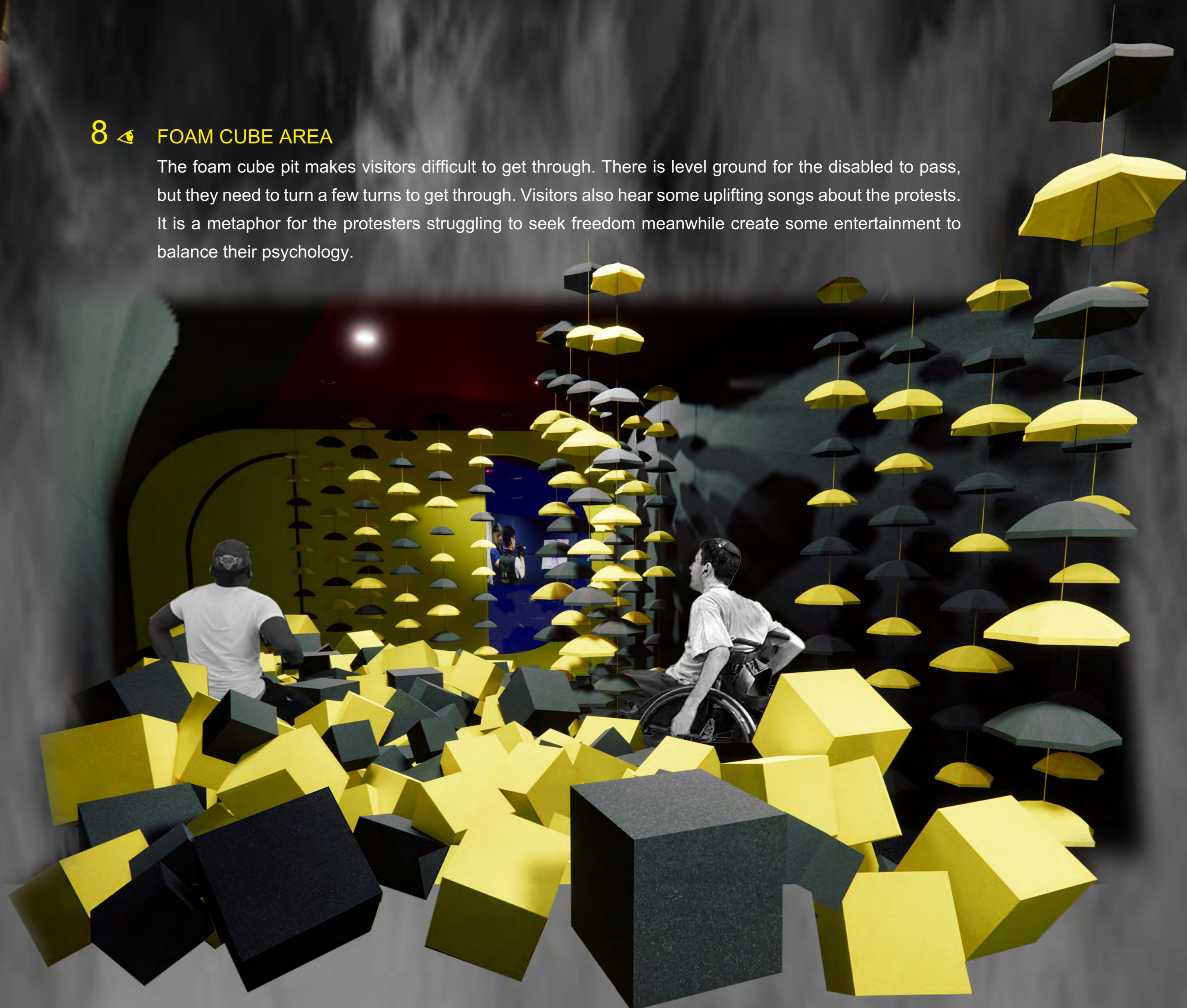
7 CONNECT LENNON WALL AREA AND FOAM CUBE AREA

The handrail of a staircase has changed from the normal Hong Kong road fence to a mesh fence. The life of Hongkongers has gradually changed from pretend normal to trapped in a cage.



8 FOAM CUBE AREA

The foam cube pit makes visitors difficult to get through. There is level ground for the disabled to pass, but they need to turn a few turns to get through. Visitors also hear some uplifting songs about the protests. It is a metaphor for the protesters struggling to seek freedom meanwhile create some entertainment to balance their psychology.



10 SILENCE AREA

All visitors are confluence in this area to read about the happening now under the Hong Kong national security law. The visitors from the Yellow path crawl out from a small tunnel, and from the Blue path are down from the slide. They leave footprints in the sandpit as they walk. It expresses no matter the point of view of the Hongkongers were one of the factors that caused the current situation. No one can escape being deprived of liberty, having to be silenced and listening to lies in Hong Kong.



9 MEDIA HUB

Here reflect the source of information received by people who have different opinions. Pro-protesters watch live broadcasts on many media to know about the protest scene. Pro-governments receive information through the government's propaganda machine and the police's press conferences. Those who have no opinion are only received information indirectly from pro-protesters and pro-governments.



11 MOURNING AREA

Visitors can mourn protesters here and make promises on the mirror wall. Some protesters lost their lives in the protests and some are still missing. An unusually high number of 'suicides' appeared after each protest. The deceased was dressed in black usually. Although some were naked or tied up, the police claimed the case was not suspicious. Therefore, some protesters made a statement to swear they would not suicide before they protested.

