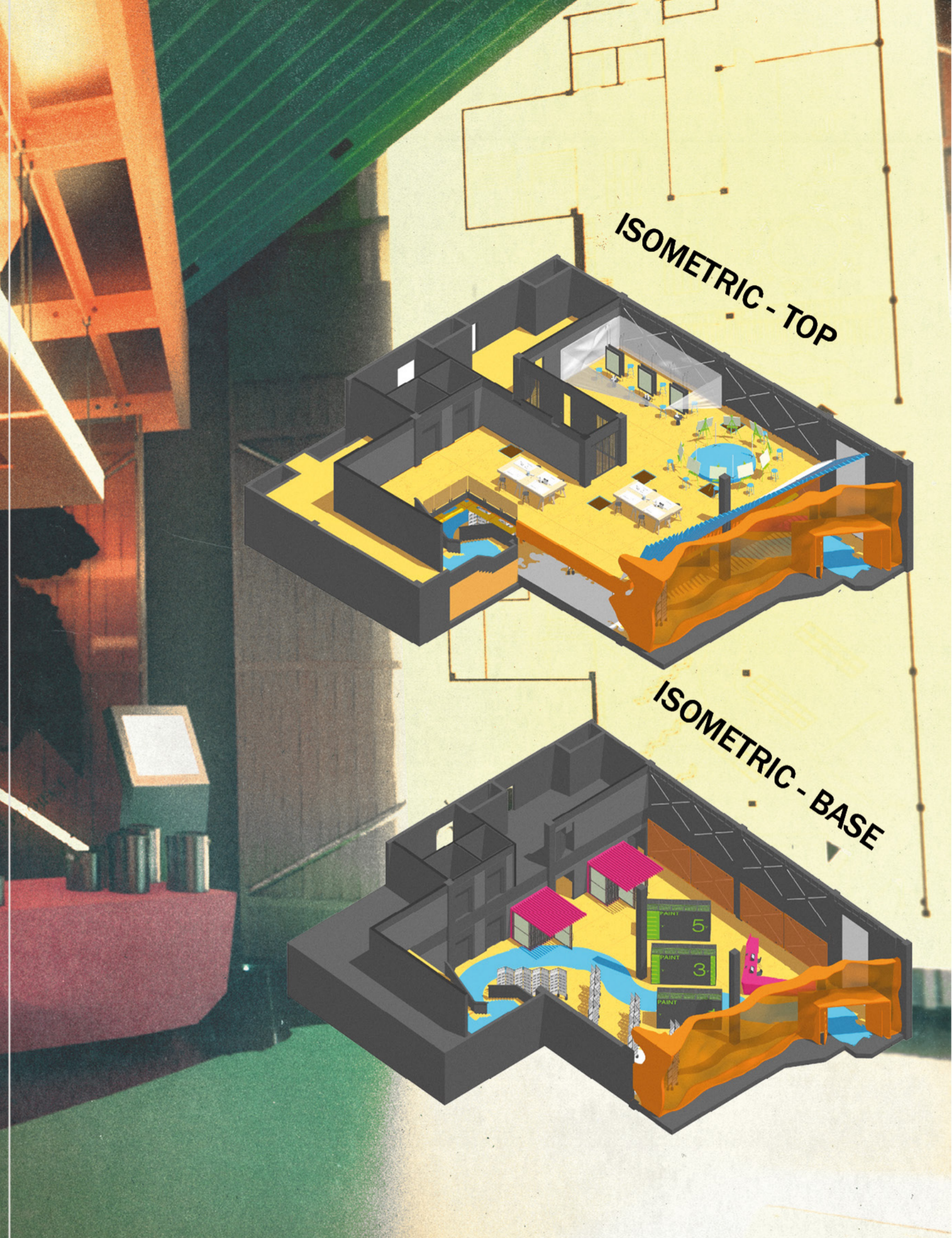




INTERIOR RENDERED VISUAL OF THE FRONT DESK & ENTRY.



PROJECT :

re- HUEs

A COMMUNITY DRIVEN PAINT STORE & FINE ARTS WORKSHOP.

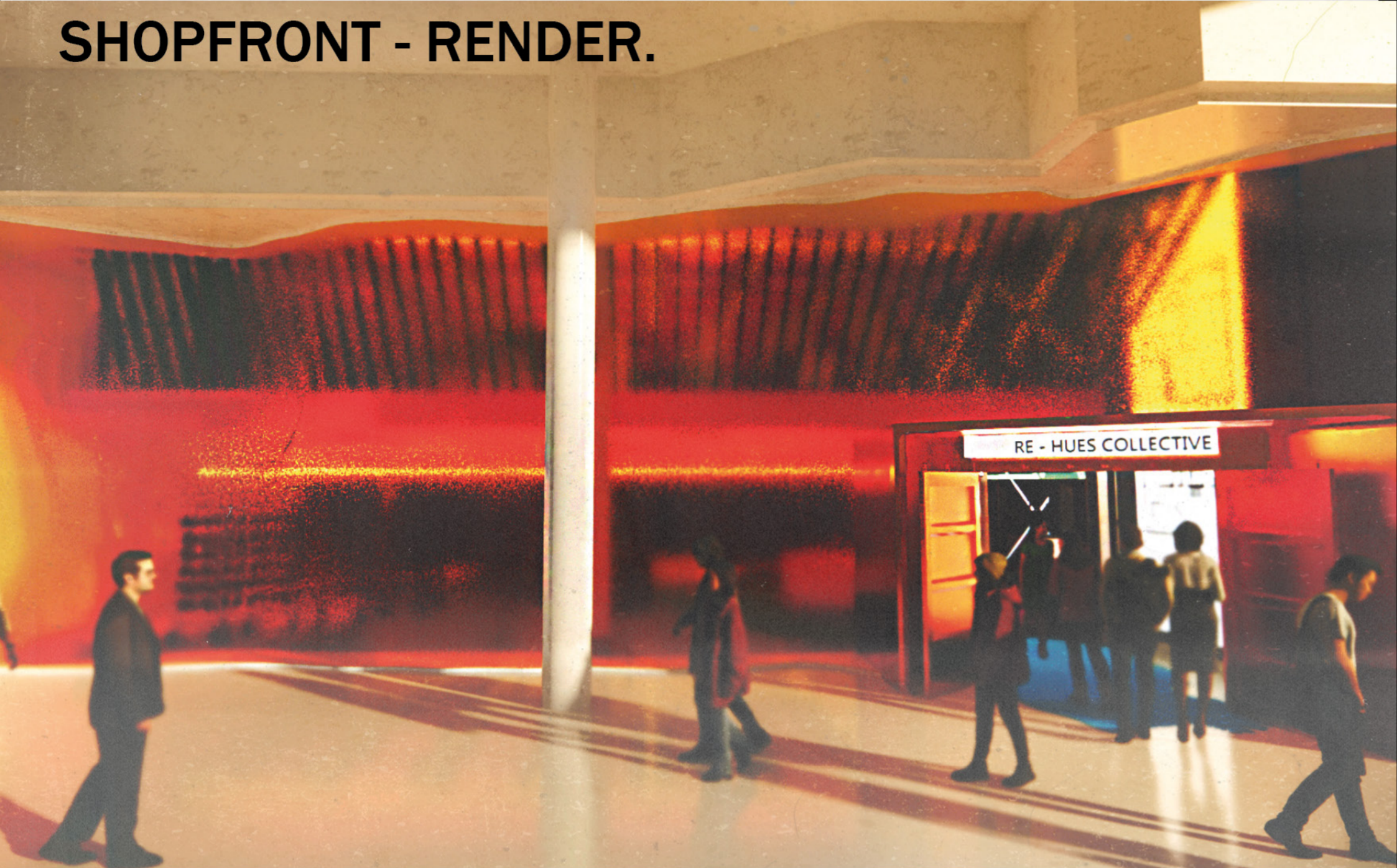
INTRODUCTION:

This retail space spans two stories featuring a concrete construction and a glass front facade. The idea behind this initiative is that retail spaces can serve as vibrant canvases for artistic expression, enriching the customer experience and fostering a deeper connection with the community.

Each element within the design is thoughtfully curated to evoke a sense of creativity, collaboration and engagement. Designing a recycling paint shop addresses waste management, promoting resource conservation, social benefits and education on recycling and reuse of otherwise wasted goods.

The storefront features a standout piece of amorphous, organic moulded orange glass. Two folding planes contour each other with a vacuum in between dispersing light into an embracing golden light flowing into the interior,

SHOPFRONT - RENDER.



1 INTERIOR VISUALS

Wide angle view of the art workshop.



2

The workshop features a flexible workspace with a warm and industrial design. Areas specified for use on the plan include / Multipurpose workbenches, A still life drawing zone with a small portable stage and adjustable lighting.

The concept behind this space serves as a way to further repurpose paints that have been turned in by the public as part of the recollective initiative. The workshop makes use of any of these goods that rent able to be repackaged in a community driven artistic environment.

Recycled spray-paint painting zone.



3

The spray painting area highlighted by a recycled plastic protective sheet enshrouding 6 anchored panels to hold canvases.

Spray Paint is the most common form of artistic expression across all city streets, with local artists being a big part of the community, they will be asked to host seminars using this space.

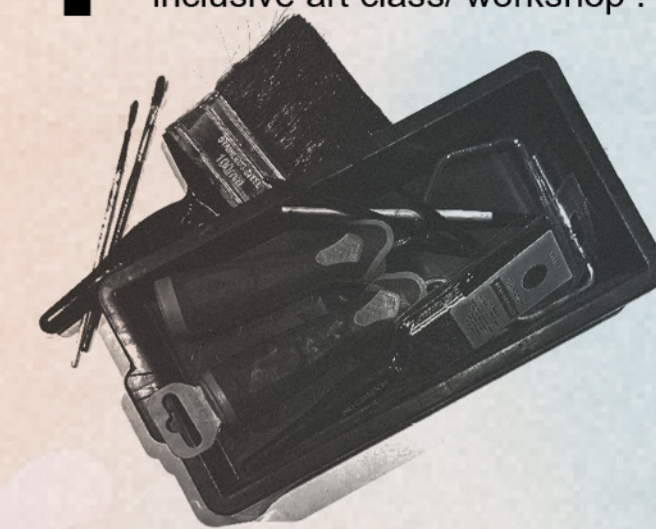
In this store unused and excess paints and spray cans, equipment also, is encouraged to be brought to the store to recycle and reuse what would be waste.

Top of staircase leading into the workshop.



4

The top floor accessible via a wide staircase and two large lifts located at the rear of the shop floor serves as an all inclusive art class/ workshop.



Looking from the back of the ground floor.



5

The main retail space, the shop floor, being a paint store doesn't have any paint readily on display.

Rather the paint is contained within large refurbished steel frame lockers, behind a pair of bold graphic sliding panels.



Looking from the back of the ground floor.

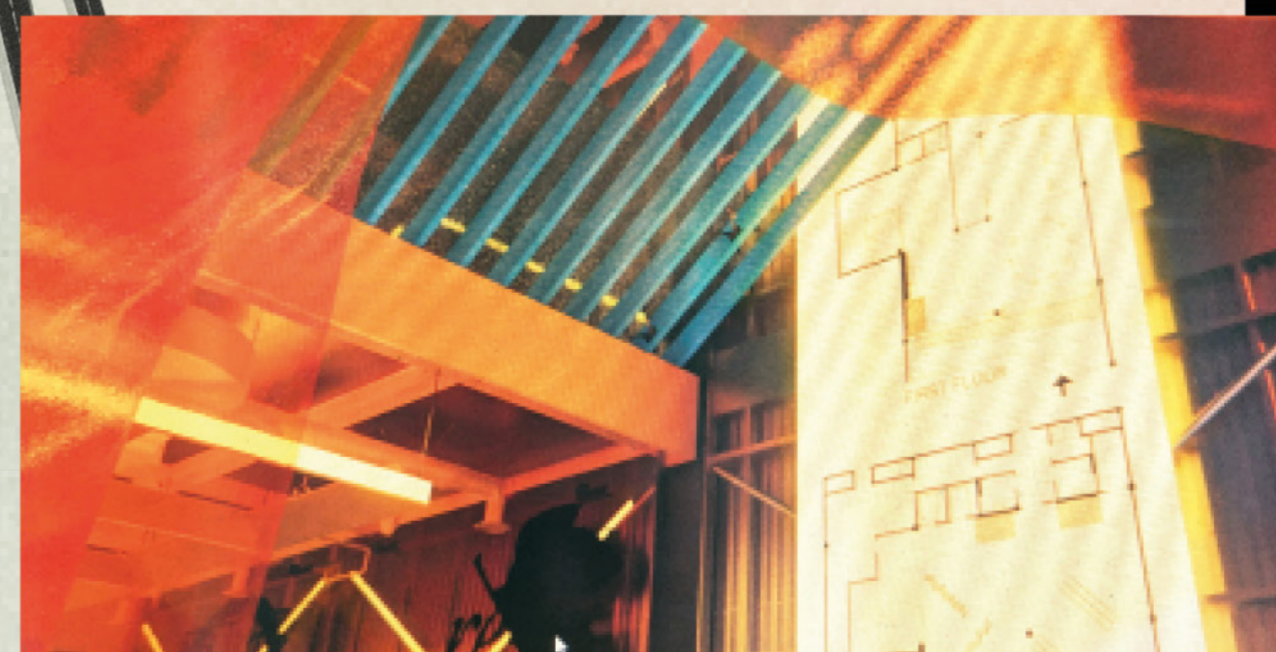


6

Due to a wide range of new and repackaged paints and equipment of all types, rather than having and housing a menagerie of various different shelving units to cater to the mass of products, a simple solution came in the form of these lockers.

To find paint without going through the store, there are colour sample shelves adjacent to the storage lockers.

Entrance way looking up though both levels.



7

Within the entryway, using the full height of the store due to the mezzanine level creates a grand, unique interior shop front. Besides the entry is a 'monolith' glowing display board boasting both the ground and upper floor plans acting as a map for the shop.

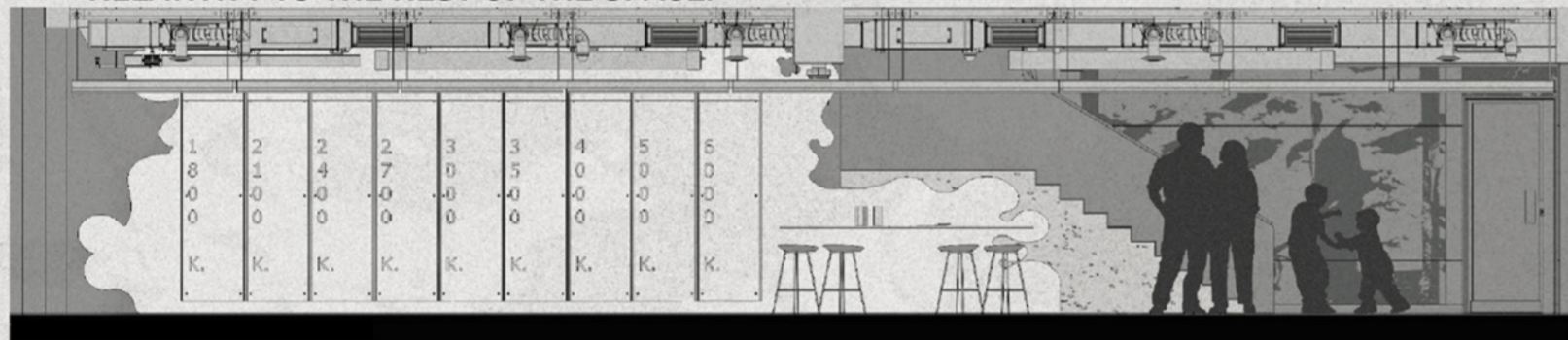
Building upon this map is a painted brushstroke trail across the length of the store connecting the entry to the stairs up to the workshop.

“ KELVIN’S WALL ”



1800K - 6000K

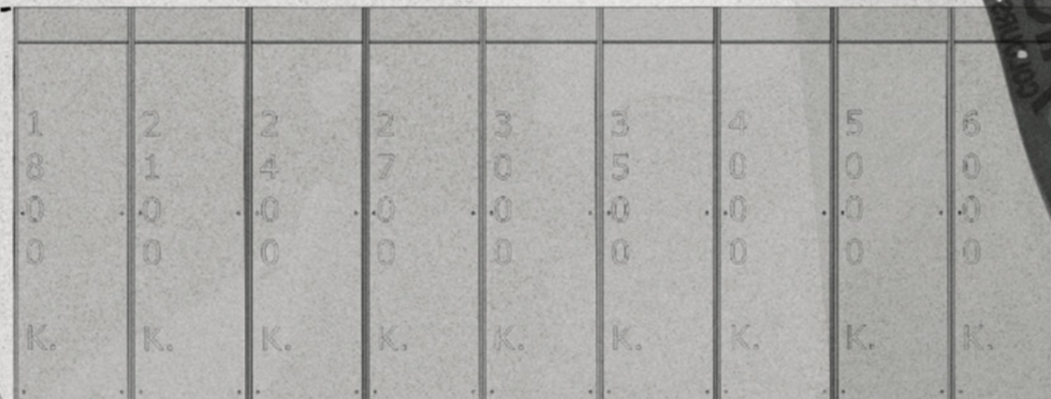
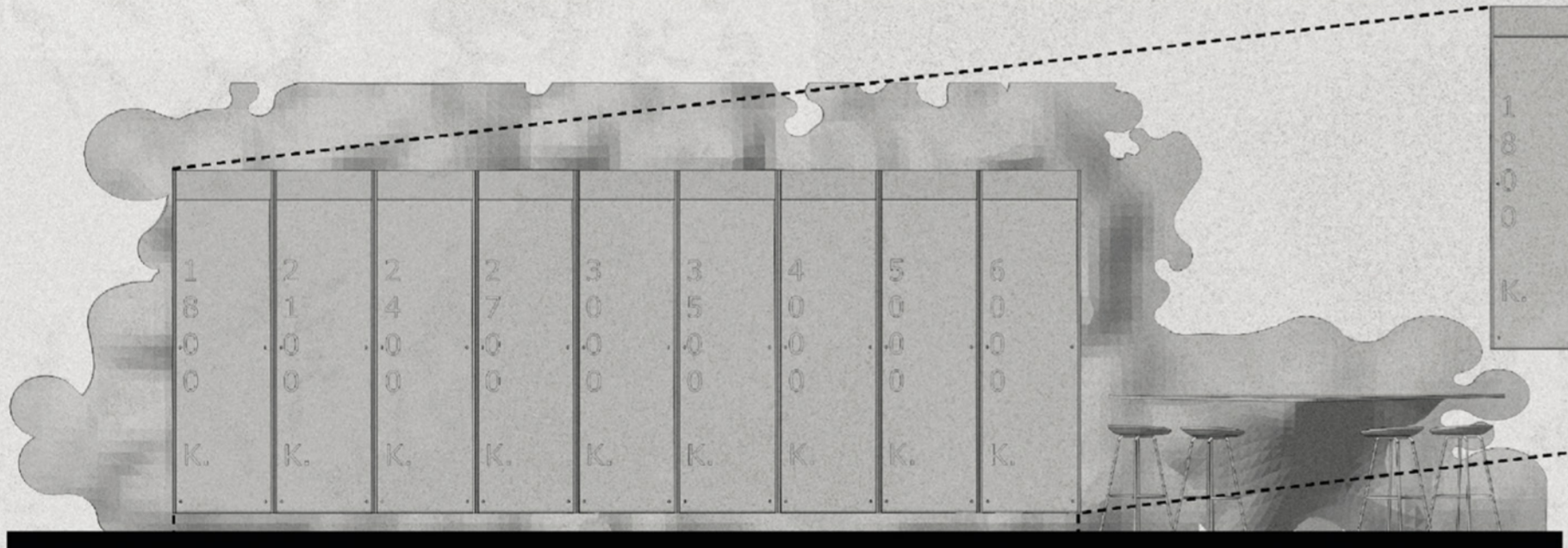
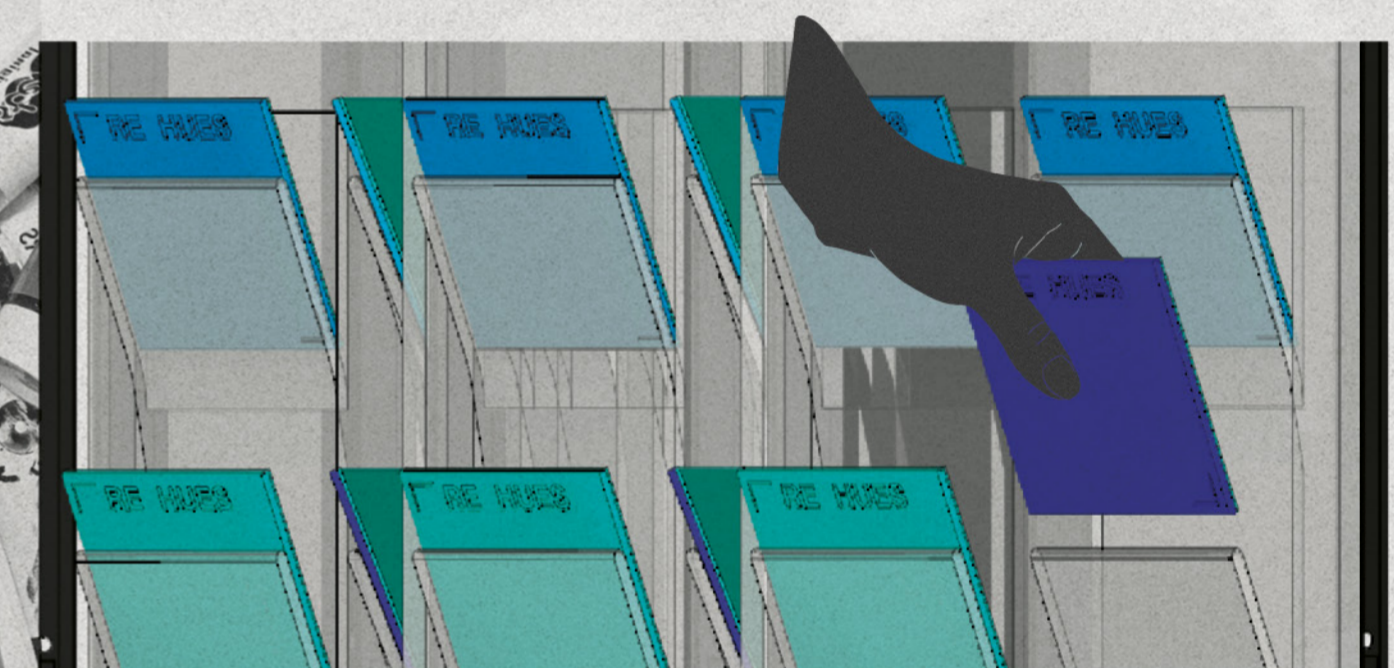
ELEVATION : SHOWING HOW THIS DETAIL WORKS IN RELATIVITY TO THE REST OF THE SPACE.



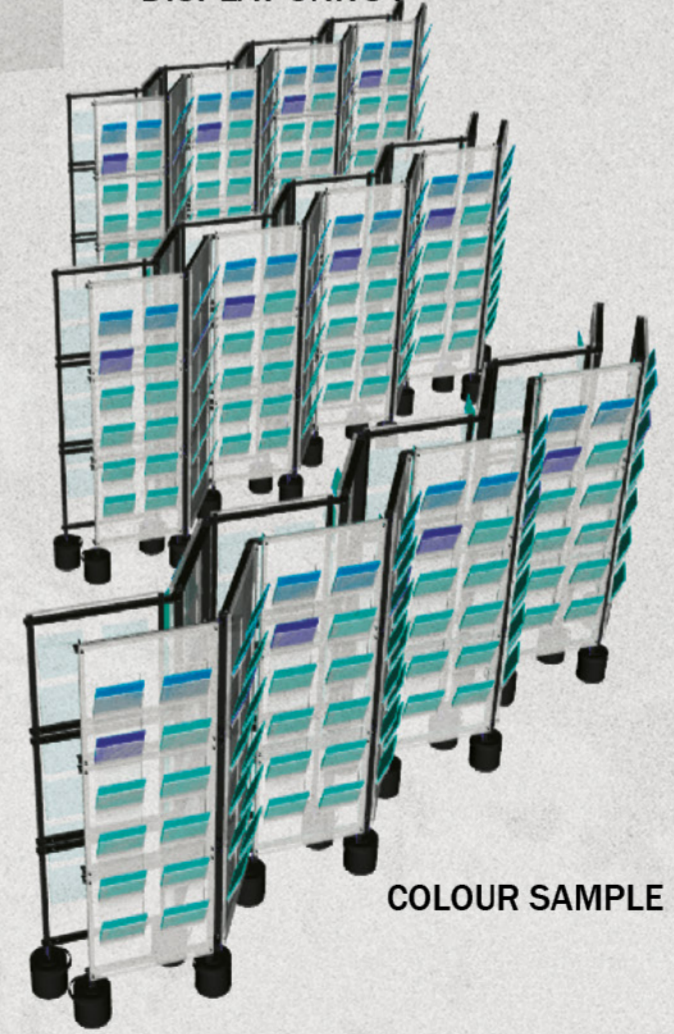
COLOUR VALUES TO TEST SAMPLES UNDER DIFERENT LIGHTING CONDITIONS.



TEST SAMPLES - REMOVABLE - CORRELATING PAINT STORED IN LOCKERS .



DISPLAY UNITS :



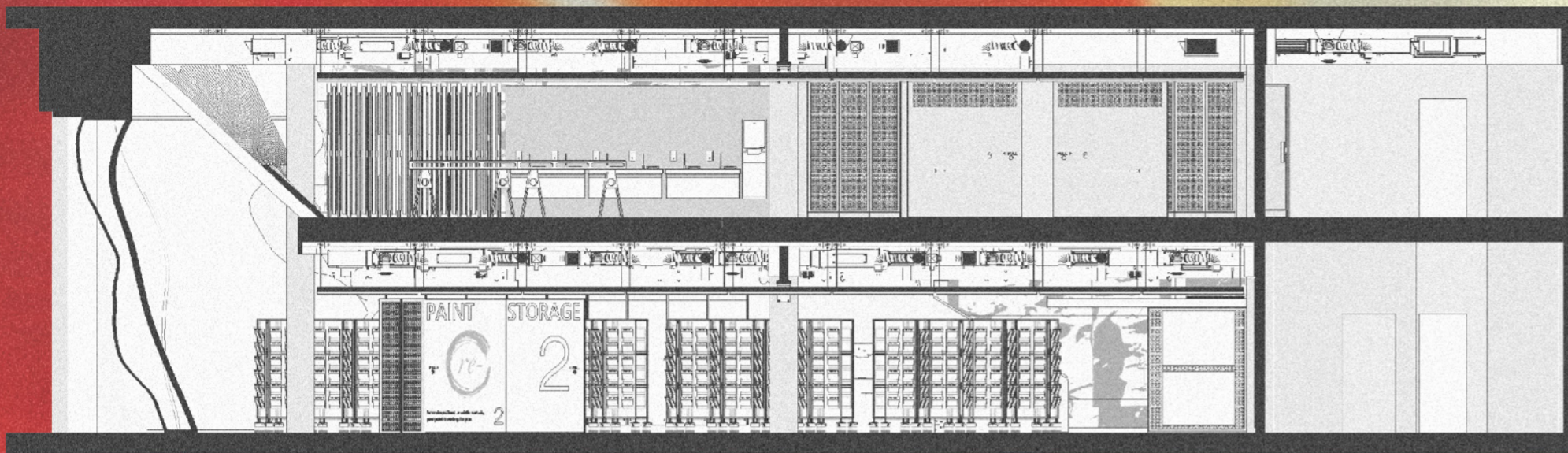
COLOUR SAMPLE



The fundamental aspect of the ground floor is the temperature gradient lights and the colour sample panels. On four doubled up (8) total sides are bespoke shelving units for an assortment of small painted wooden boards that serve as colour samples for the paints. The display has a zig zag shape to it, mimicking a sample swatch booklet that you would get from a paint shop. Instead of a small book with little squares of colour, the scaled up version provides an interactive experience. The wall with a selection of different temperature lights provides the ability to test these samples under all lighting conditions.

EXTERIOR SURROUNDING 'SHELL'. MADE TO LOOK LIKE A PAINT SPILL - CONTINUES ONTO THE FLOOR.

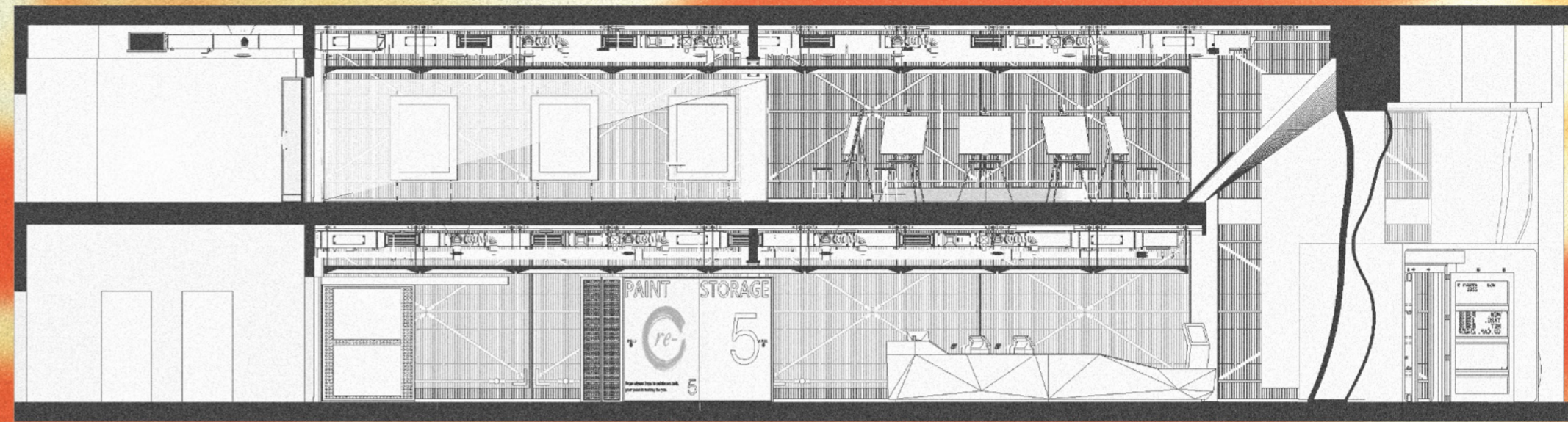
SECTION CUTS FROM PLAN:



SECTION : **A-A**

1 : 100 @ A2

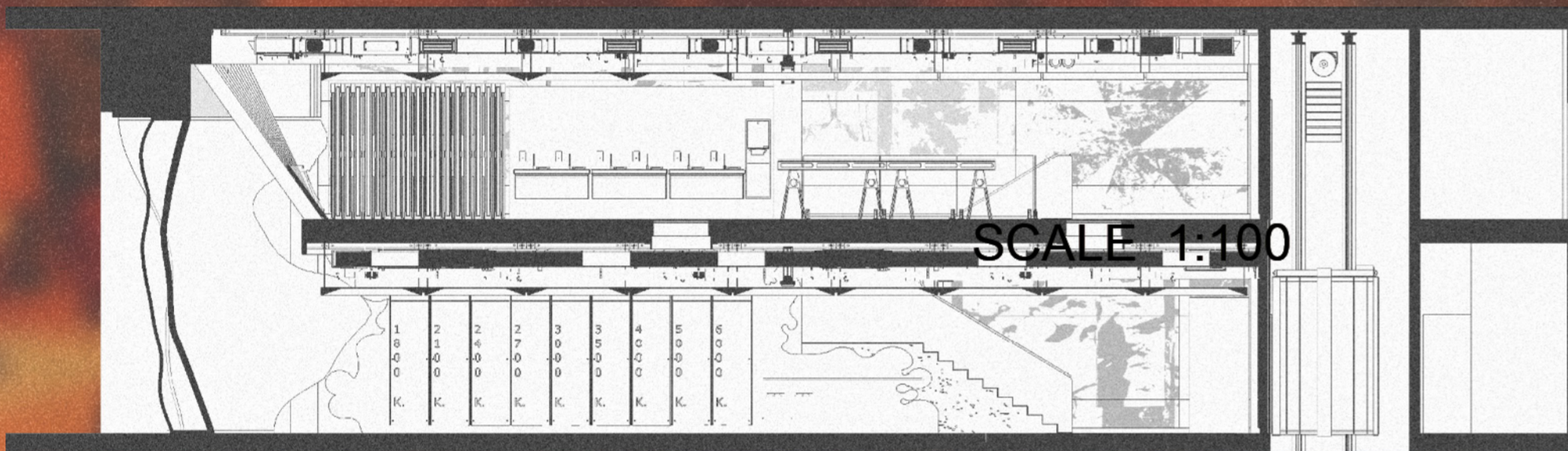
Illustrating a section taken looking at the LEFT



SECTION : **B-B**

1 : 100 @ A2

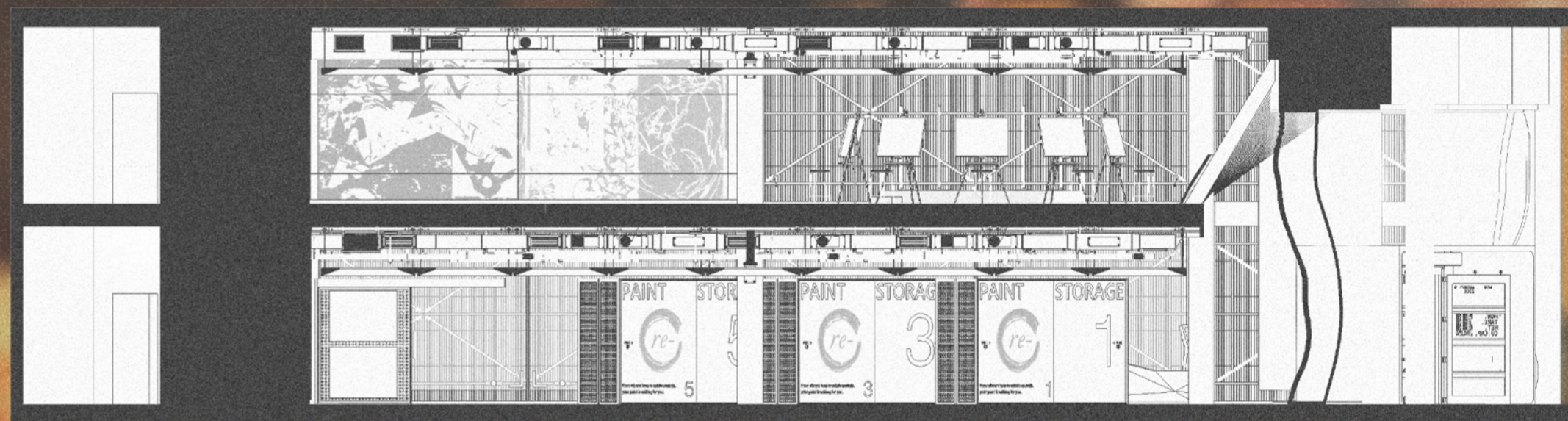
Illustrating a section taken looking at the RIGHT side of the store.



SECTION : **C-C**

1 : 100 @ A2

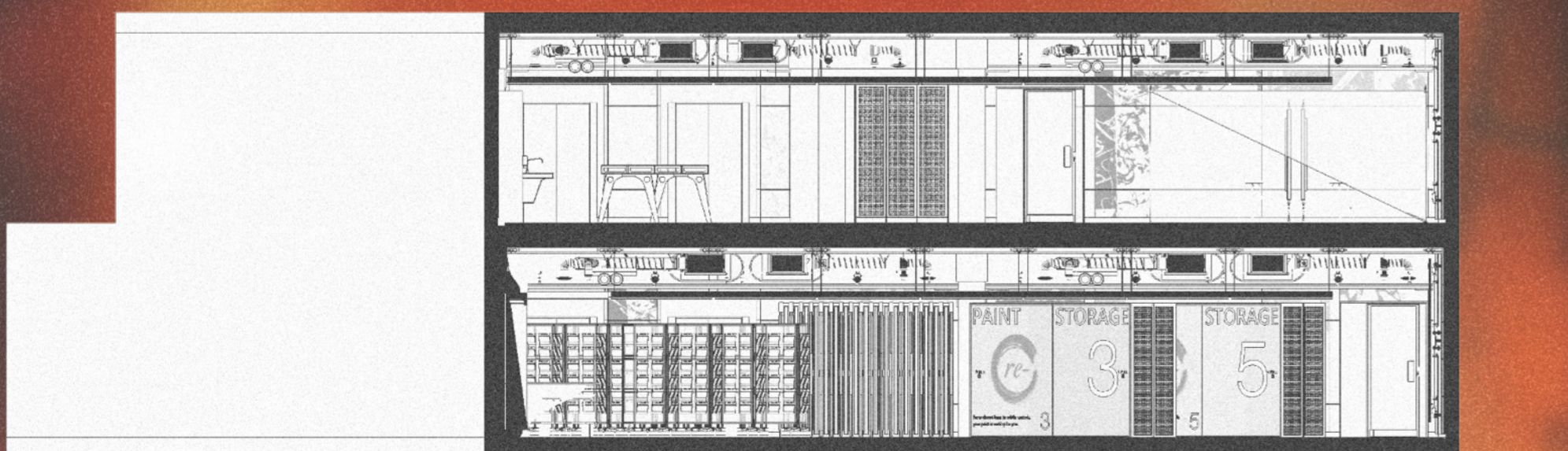
Illustrating a section taken looking at the LEFT side of the store.



SECTION : **D-D**

1 : 100 @ A2

Illustrating a section taken looking at the RIGHT side of the store.



SECTION : **E-E**

1 : 100 @ A2

Illustrating a section taken looking into the BACK of the store.



SECTION : **E-E**

1 : 100 @ A2

Illustrating a section taken looking at the FRONT of the store.



GROUND FLOOR
1 : 100 @ A2



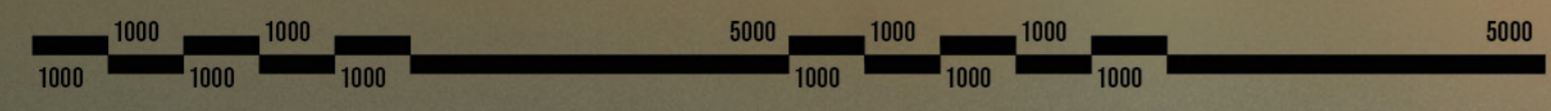
FIRST FLOOR
1 : 100 @ A2

FLOORPLAN :

Filled in, furnished plan with section markers at 1 : 100 scale. Structural elements and interior furnishings shown on plan.

DIMENSION UNITS : Millimetres, [mm]

SCALE BAR : 1 : 100



re-HUES
A COMMUNITY DRIVEN PAINT STORE & FINE ARTS WORKSHOP.