

skein2skin

Changing fashion, stitch by stitch

Skein2Skin is a slow-fashion crochet brand, featuring a collaborative store and studio committed to fostering a sustainable lifestyle and addressing the detrimental effects of the fast-fashion industry. By ethically sourcing wool from local and other sheep farms across the UK, it combats the environmental impacts of synthetic fibres and dyeing processes that rely on the use of Earth's finite resources, such as petroleum. Located in Lincolnshire, Repurposing an abandoned barn, Skein2Skin not only aims to reduce its waste from the offset, but also celebrates the art of handmade crafts, preserving a tradition threatened by modern industrial practices. This initiative encourages a slower, more mindful approach to fashion, promoting quality, craftsmanship, and sustainability, whilst demonstrating how both consumers and the fashion industry can adapt to work alongside the Earth's limits.



'THE GARDEN' - RETAIL SPACE

THE ISSUE

The textile industry, due to materials like polyester, accounts for 15% of global plastic use, with the Fast-fashion industry being a key factor. Fast fashion centres around the production of low-quality clothing using inexpensive materials and often unethical labor practices. Driven by rapidly changing trends, it relies heavily on synthetic fabrics, which often derive from crude oil and natural gases. Ethically, the fast fashion industry is problematic as brands prioritise quick, cheap production, frequently leading to the exploitation of workers' rights.

Not only do we have to tackle the issue of the fast fashion industry, but we also need to educate consumers on how their choices in fashion have an impact on the environment. Providing them with sustainable alternatives and a fresh perspective on fashion is essential for fostering long-term change and shifting society's perspective on the matter.



REPURPOSING THE BARN

This abandoned Dutch-style barn is located in the heart of Lincolnshire, a county with an abundance of rich historical roots of both Roman and Medieval settlements. Many of its towns, and the city of Lincoln, were originally thriving medieval wool traders, exporting it through Boston town's port across Europe. The empty steel shell of the barn and the location's historical relevance in the Wool trade, provides a perfect opportunity to return back to a more traditional, sustainable way of life.



10%

The fashion industry is responsible for 10% of global carbon emissions. (UNFCCC.INT, 2020)



85%

85% of all textiles go to dumps and landfill each year. (LIN ENVIRONMENT PROGRAME 2019)





35%

35% of all Microplastics found in the Ocean come from the laundering of synthetic textiles and clothes (IUCN, 2017). The use of synthetic fibres (Polyester, Nylon, Acrylic), which take hundreds of years to biodegrade, creates this mass-scale issue. (BOUCHER & FRIOT, 2017; IUCN, 2017)

3 main polluters in the fashion & textiles industry (Quantas International 2018 Report):

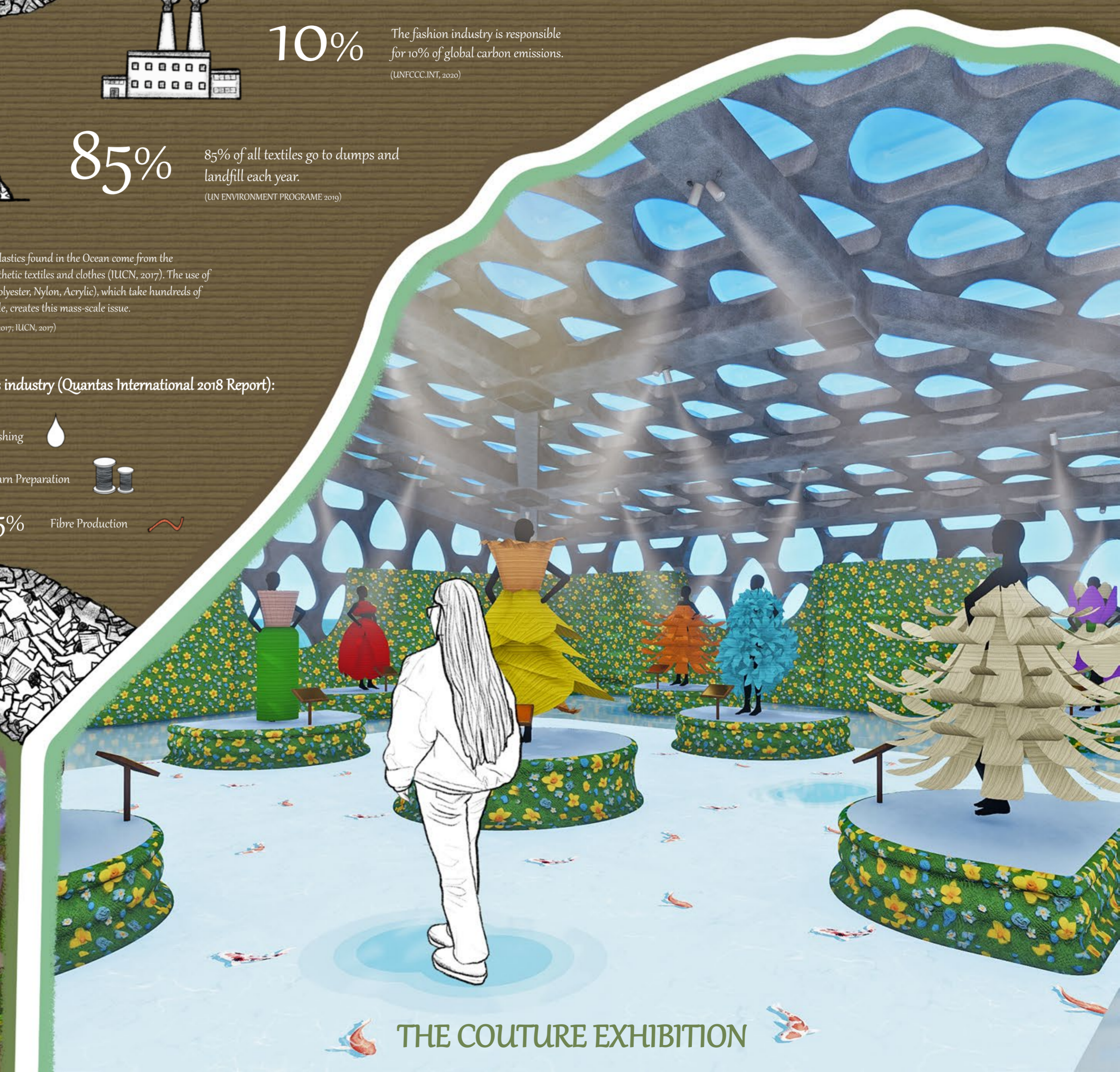
36% Dyeing & Finishing 

28% Yarn Preparation 

15% Fibre Production 

CONCEPT MODEL

This concept model portrays the distinct zones through the use of colour, stitch pattern, and figures. The green 'garden', handmade using yarn, symbolises the countryside landscape that will influence the main retail & runway area. The blue 'zone' features protruding lumps, referring to the popcorn crochet stitch. The knitted brown area uses regular and controlled stitching to represent the contrasting calmness for the proposed restaurant space.



THE COUTURE EXHIBITION

THE SOLUTION

The Skein2Skin project promotes a 'slower' approach to fashion by connecting with local and UK-wide sheep farms to produce ethically and sustainably crafted garments. This initiative aims to transform society's perception of crochet from a dated craft to a timeless art form that champions sustainability in the fashion industry. Amidst the fast fashion trend of crochet imitation, Skein2Skin highlights the true value and environmental benefits of authentic crochet.

The project supports independent crocheters through a collaborative retail environment, addressing worker exploitation and allowing creative freedom free from the pressures of trends. Additionally, Skein2Skin integrates its principles into high fashion with a studio dedicated to couture crochet, showcasing intricate craftsmanship that utilises high-quality wool, locally sourced from Lincoln Longwool sheep, and pushes the boundaries of the craft.



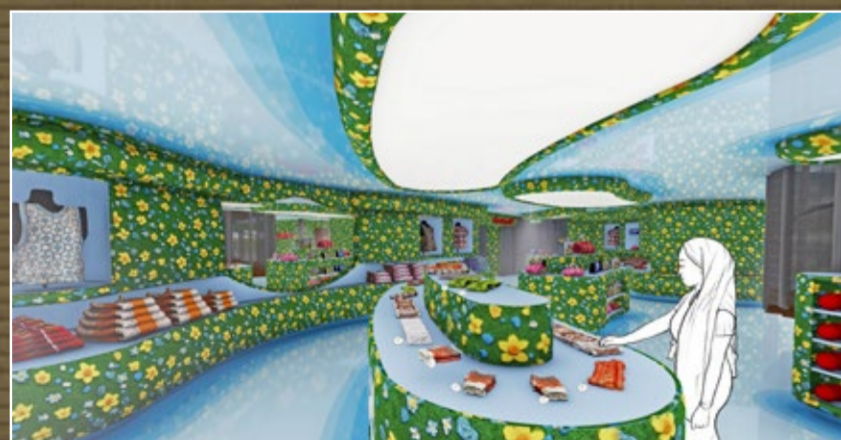
THE GRAZE

Overlooking the dramatic view of the Lincolnshire countryside, 'The Graze' offers a selection of organic grazing platters and dishes, using locally sourced produce.



STUDIO ENTRANCE

The entrance facade to the studio is covered with soft sheep fleece to provide a tactile welcoming leading to the entrance doors. Circular windows allow visitors a glimpse into the manufacturing of couture crochet clothing.



'THE GARDEN' RETAIL SPACE

The retail space celebrates the artistry and skill of independent crocheters with it showcasing a unique selection of handcrafted garments and accessories in an intricately crocheted floral 'garden'.



CROCHET SUPPLIES IN STORE



FIRST FLOORPLAN

The first floor of the barn presents a harmonious blend of sustenance and creativity, featuring 'The Graze' eatery, where visitors can indulge in organic and locally sourced culinary delights, alongside the bustling design studio responsible for the couture crochet, where innovative, sustainable fashion comes to life amidst the backdrop of the location's rural charm.



'THE SKEIN' DESIGN STUDIO

Celebrating the traditional artistry of crochet, 'The Skein Studio' specialises in designing and manufacturing couture crocheted garments, using sheep's wool for its durability and environmental sustainability (sourced from neighbouring sheep counties).



THE CLIENT OFFICE

Adjacent to the main design studio lies the intimate client office, suspended above the couture exhibition space. Here, client consultations take place, allowing the clients to immerse themselves in the design process while overlooking the exhibition gallery.



GROUND FLOORPLAN

On the Ground Floor, the main retail space, 'The Garden', offers a space to support and encourage independent crocheters, creating a sustainable crochet community. It is an immersive and tactile environment that transports visitors into a crochet wonderland. Situated in the barn's extension, there is a couture crochet exhibition that showcases the latest high-fashion creations from skilled designers.



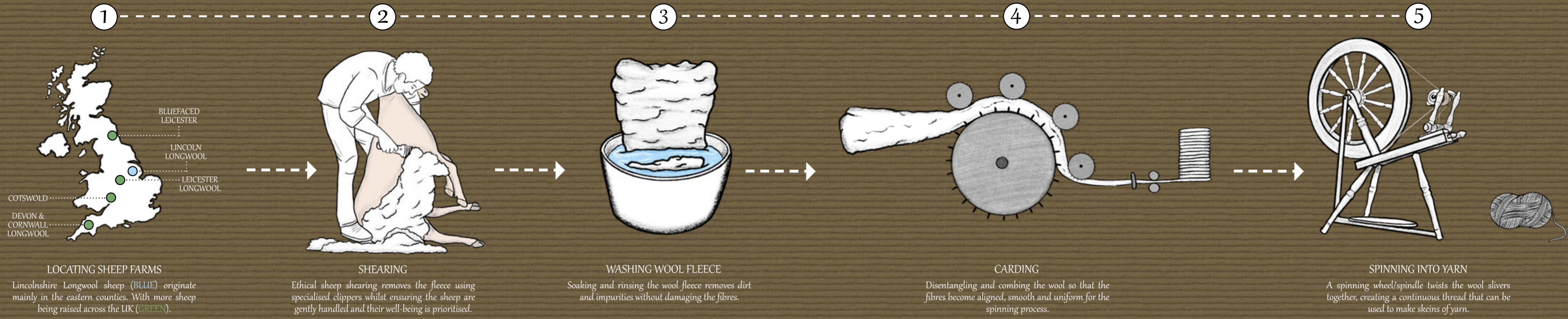
THE COUTURE EXHIBITION

An interactive digital floor distinguishes the five central podiums. As visitors stroll across the interactive floor, they are surprised by the 'sensation' of walking over a Koi fish pond, where each step creates gentle ripples, evoking the tranquility of a water feature.



INTERACTIVE HISTORY DISPLAY

SOURCING & PROCESSING



1
LOCATING SHEEP FARMS
 Lincolnshire Longwool sheep (BLUE) originate mainly in the eastern counties. With more sheep being raised across the UK (GREEN).

2
SHEARING
 Ethical sheep shearing removes the fleece using specialised clippers whilst ensuring the sheep are gently handled and their well-being is prioritised.

3
WASHING WOOL FLEECE
 Soaking and rinsing the wool fleece removes dirt and impurities without damaging the fibres.

4
CARDING
 Disentangling and combing the wool so that the fibres become aligned, smooth and uniform for the spinning process.

5
SPINNING INTO YARN
 A spinning wheel/spindle twists the wool slivers together, creating a continuous thread that can be used to make skeins of yarn.

FOR RETAIL USE



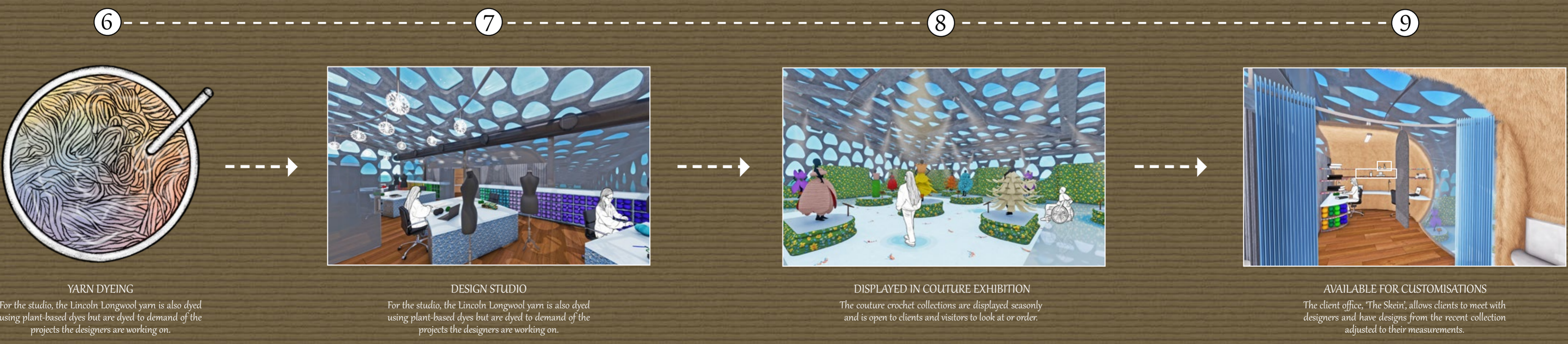
6
YARN DYEING
 Dyeing the wool yarn using low-impact dyes that are sourced from plants. For example, onion skins produce a golden yellow dye.

7
SELLING YARN & SUPPLIES IN RETAIL STORE
 The eco-dyed yarn alongside crochet hooks are available to encourage visitors and support existing crocheters to create their own sustainable clothing.

8
INDEPENDENT CROCHETERS CREATE ITEMS
 Independent crocheters create clothing and accessories using wool yarn so that all items meet the sustainability standards of Skein2Skin.

9
RETAIL STORE SELLING A VARIETY OF CROCHETERS' ITEMS
 The combination of different crocheters' products means that there is a continuous rotation of stock, encouraging customers to return.

FOR STUDIO USE



6
YARN DYEING
 For the studio, the Lincoln Longwool yarn is also dyed using plant-based dyes but are dyed to demand of the projects the designers are working on.

7
DESIGN STUDIO
 For the studio, the Lincoln Longwool yarn is also dyed using plant-based dyes but are dyed to demand of the projects the designers are working on.

8
DISPLAYED IN COUTURE EXHIBITION
 The couture crochet collections are displayed seasonally and is open to clients and visitors to look at or order.

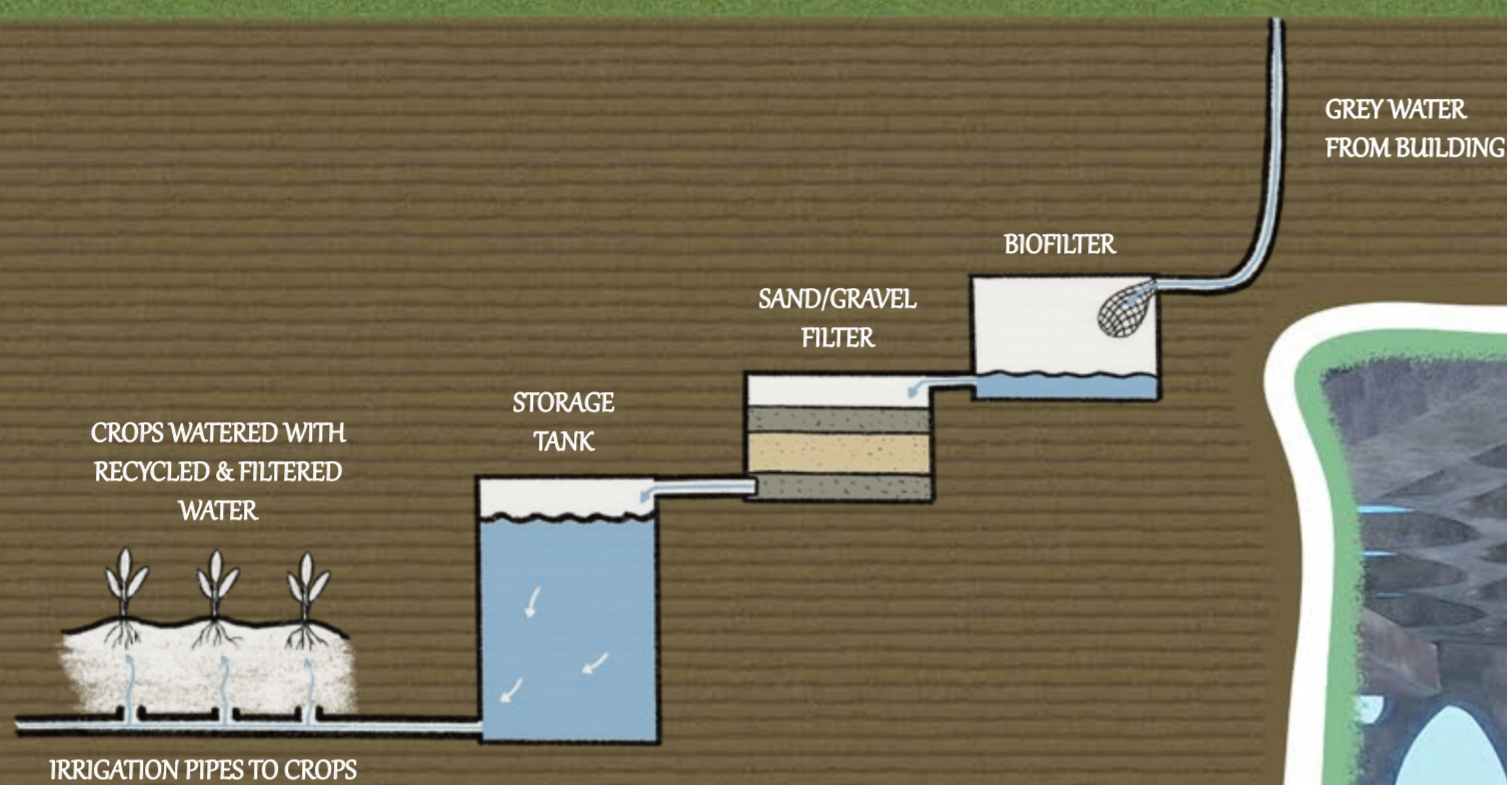
9
AVAILABLE FOR CUSTOMISATIONS
 The client office, 'The Skein', allows clients to meet with designers and have designs from the recent collection adjusted to their measurements.

ENVIRONMENTAL SUSTAINABILITY

The repurposed barn exemplifies an innovative blend of renewable energy utilisation and advanced water management strategies, demonstrating a holistic approach to sustainability and environment stewardship.

GREY WATER RECYCLING

Situated amidst expansive farmland and adjacent to the stream, the site incorporates a multi-faceted filtration system designed to handle grey water generated by the building. This system purifies the grey water, enabling its safe redistribution across the surrounding farmland and back into the building. This process not only supports sustainable water management but also provides beneficial irrigation, enhancing agricultural productivity and soil health.



RAINWATER HARVESTING

In addition to grey water recycling, the barn is equipped with a rainwater harvesting system. Rainwater is collected, stored in dedicated tanks, and later used to supplement the irrigation system. This approach helps mitigate the risk of flooding during periods of heavy rain by reducing surface runoff. Moreover, by preventing excessive water accumulation on the fields, the system helps reduce potential oxygen depletion in the soil, therefore maintaining its fertility and promoting a healthier ecosystem.

PHOTOVOLTAIC SYSTEM

Taking advantage of its exposed position in the countryside to optimise solar energy capture, the building uses a sophisticated photovoltaic system. This system is integrated within both the front glazing of the first floor and the ETFE cushioning that envelops the entire extension of the building. By harnessing solar power, the barn significantly reduces its reliance on non-renewable energy sources, aligning with sustainable practices that strengthen the project's ideology.



ETFE FILM



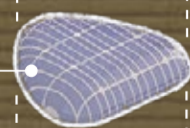
95% TRANSPARENT PROTECTIVE LAYER

EVA SHEET



SEALING & INSULATING FILM THAT ACTS AS ENCAPSULATING AGENT

FLEXIBLE PV CELL



FLEXIBLE SOLAR CELLS INTEGRATED IN THE ETFE PROTECTIVE CUSHIONING

EVA SHEET



SEALING & INSULATING FILM THAT ACTS AS ENCAPSULATING AGENT

ETFE FILM



95% TRANSPARENT PROTECTIVE LAYER



ETFE CUSHION



CLUSTER STITCH



POPCORN STITCH

ETFE CUSHIONING FROM INSIDE THE EXTENSION

The ETFE cushioning design combines the characteristics of the crochet stitches: cluster stitch (flipped horizontally) and popcorn stitch.

‘THE SKEIN’ CLIENT HUB OVERLOOKING THE EXHIBITION

