

SEAGATE SKATE

BRINGING STREET CULTURE TO THE HEART OF DUNDEE

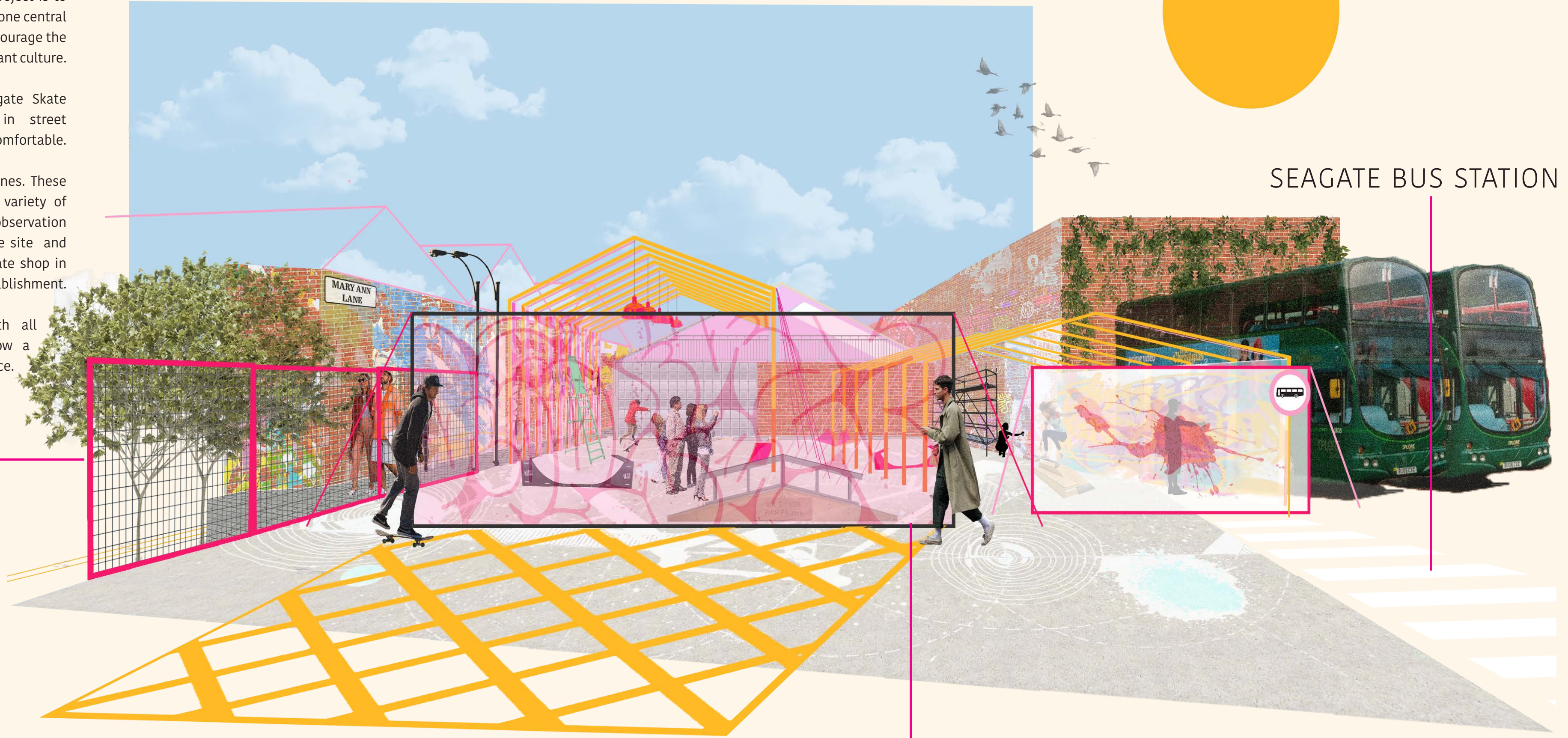
Seagate Skate is a new build project in the heart of Dundee, Scotland. The aim of this project is to combine all aspects of street culture in one central hub that helps support, explore and encourage the development and enjoyment of this vibrant culture.

Through art, sport and fashion Seagate Skate encourages everyone to partake in street culture however they feel most comfortable.

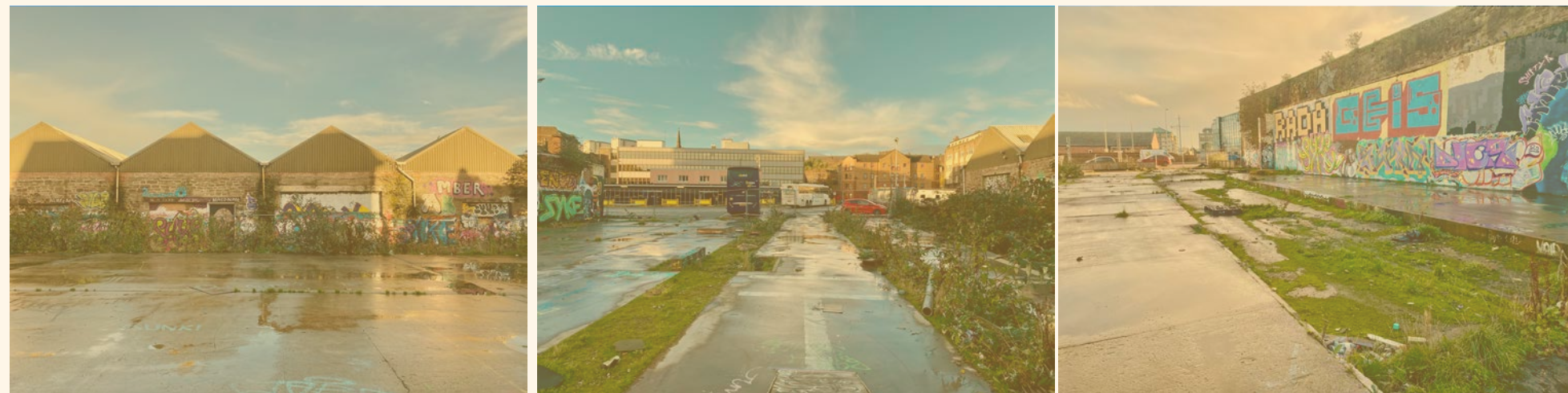
The site is made up of 7 different zones. These are three different skate parks to a variety of different abilities as well as a cafe, observation deck and observation areas around the site and finally a concept store for Ozzy's a skate shop in Dundee that is need of an updated establishment.

These zones were designed with all users and civilians in mind to allow a range of abilities to enjoy the space.

MARY ANN LANE



SITE



Mary Ann Lane is part of a series of legalised graffiti zones located in Dundee operated and sustained by the Open/Close Dundee initiative which aims to bring street art to areas of Dundee that are prone to become run down which in turn ruins many parts of the city. Open/Close have helped tackle this problem by transforming and renovating parts of Dundee's streets which before were off putting and intimidating for many Dundonians.

MARY ANN LANE

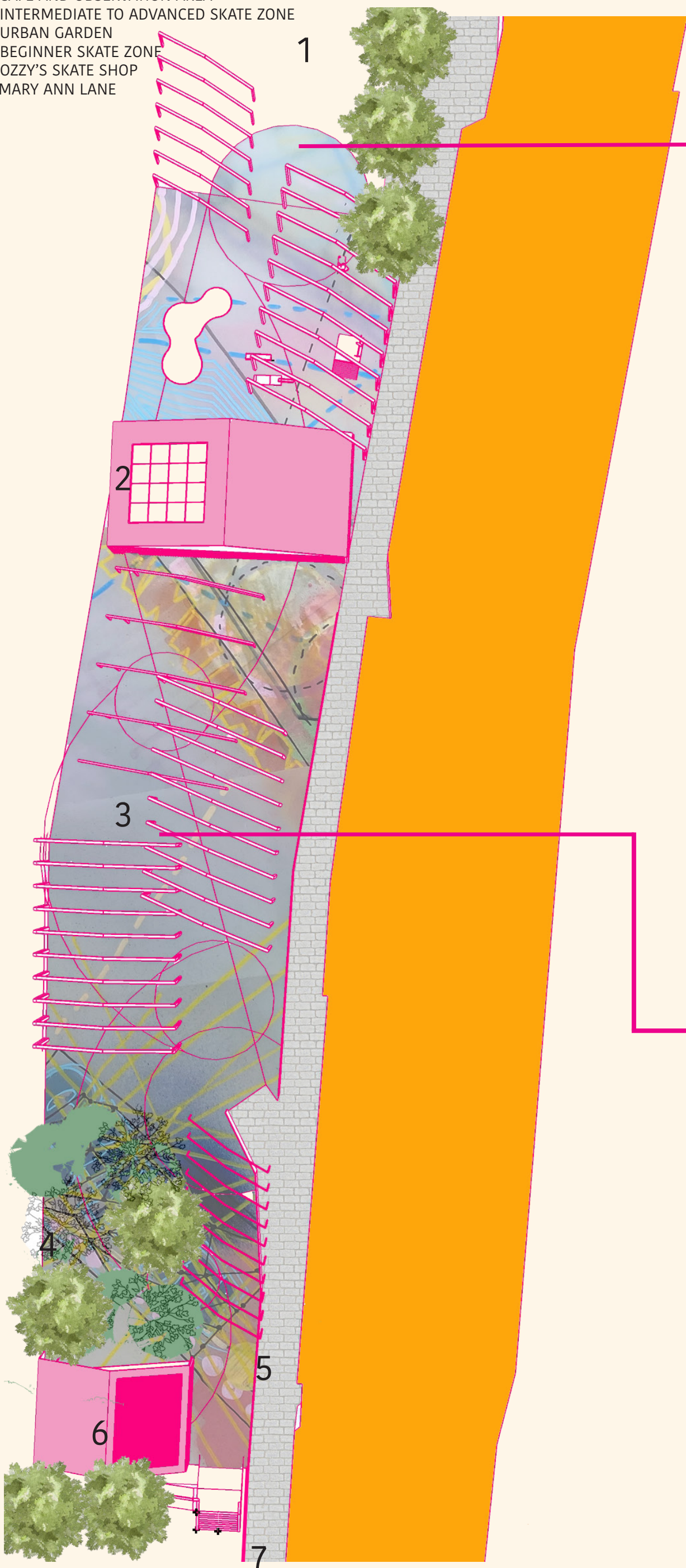
SKATE ZONE

One the key reason that this site is so important is because of its relation to the Seagate Bus Station. Tourist and people venturing into Dundee should be welcomed to this "City Of Design" not off putted by a run down area and stark flood lights looming over them. This design helps welcome people immediately into the vibrant culture of Dundee and see the amazing and interesting people that live there. It also allows people to wait and be entertained by the skate culture while they wait for their bus, which create a more positive atmosphere in the Seagate area.



KEY

- 1. SKATE ZONE
- 2. CAFE AND OBSERVATION AREA
- 3. INTERMEDIATE TO ADVANCED SKATE ZONE
- 4. URBAN GARDEN
- 5. BEGINNER SKATE ZONE
- 6. OZZY'S SKATE SHOP
- 7. MARY ANN LANE



3. INTERMEDIATE AND ADVANCED SKATE ZONE

The bright and dynamic spaces are inspired by the sites industrial history being a the old bus station workshop.

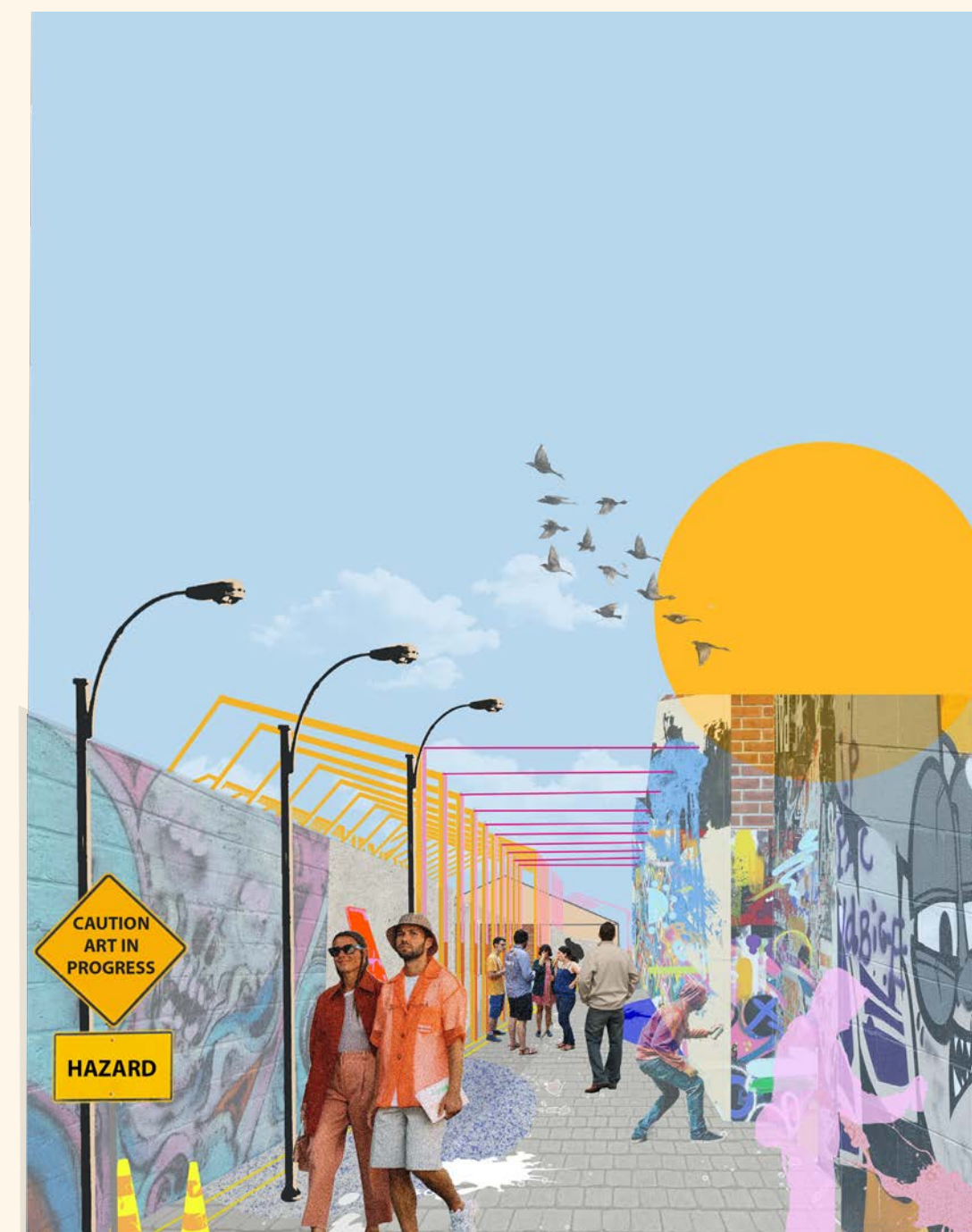
A series of interwoven shed structures guide you down the site ad experience skate and street culture at its finest, whether you want to take part of simply observe, Seagate skate offers an immersive experience that allows for the celebration exploration and development of this culture.

The initial flow and use of the site is based around a starting point on the South side where users can find a concept store for Ozzy's a skate shop in Dundee.

From here people can begin to observe and enjoy skaters in the beginner zone or take a stroll through the urban garden. Before they are met with a more advanced skate zone. The second structure is a cafe and observation area, a place for relaxation and conversation. Finally after that is the last skate zone bordering the Seagate Bus Station providing an interesting environment for those waiting.

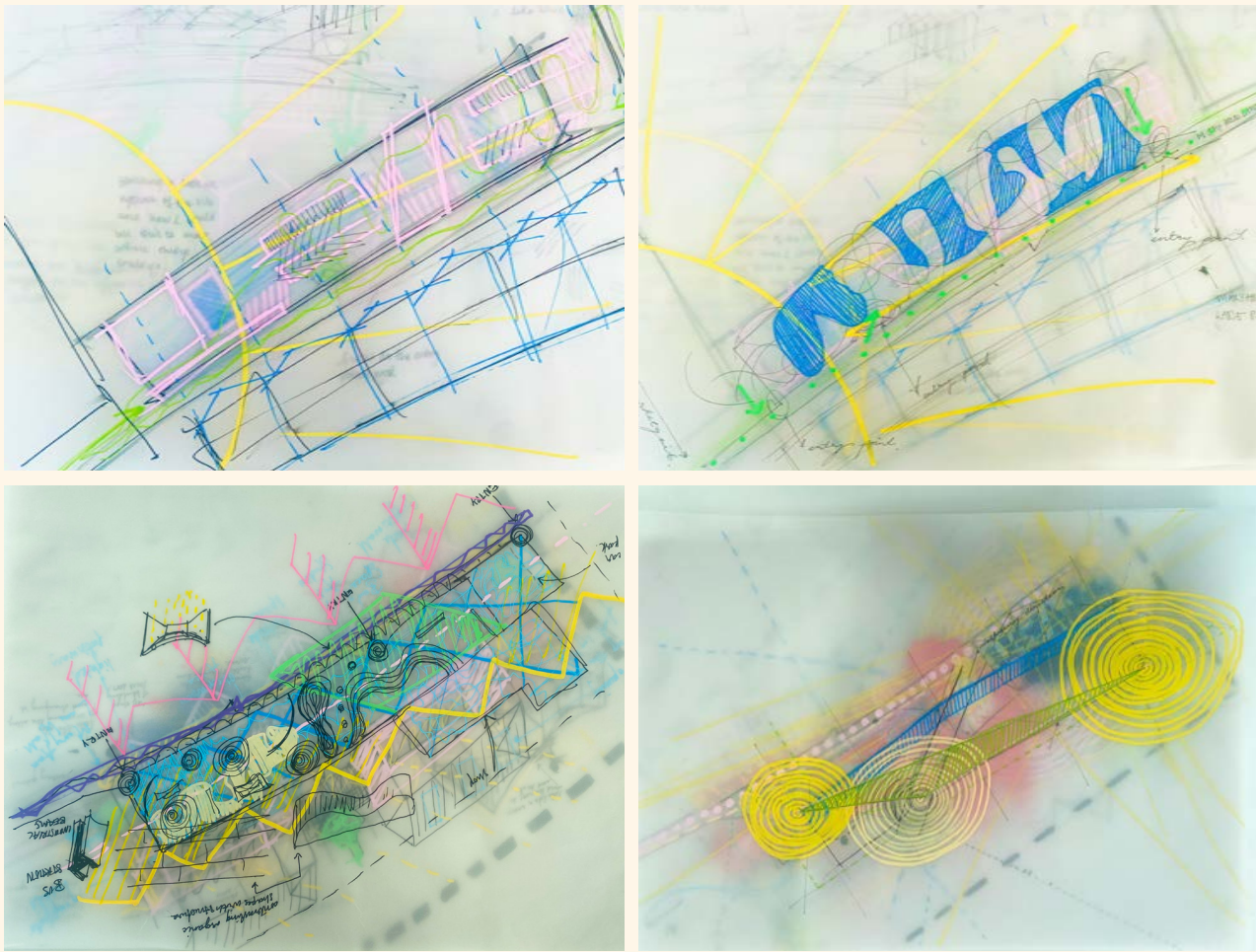
There are many access points along the site so users can enter and leave where is appropriate for them.

Running along Mary Ann Lane the vibrant and colourful graffiti provides an impressive environment for the project.



7. MARY ANN LANE

ZONING DIAGRAMS

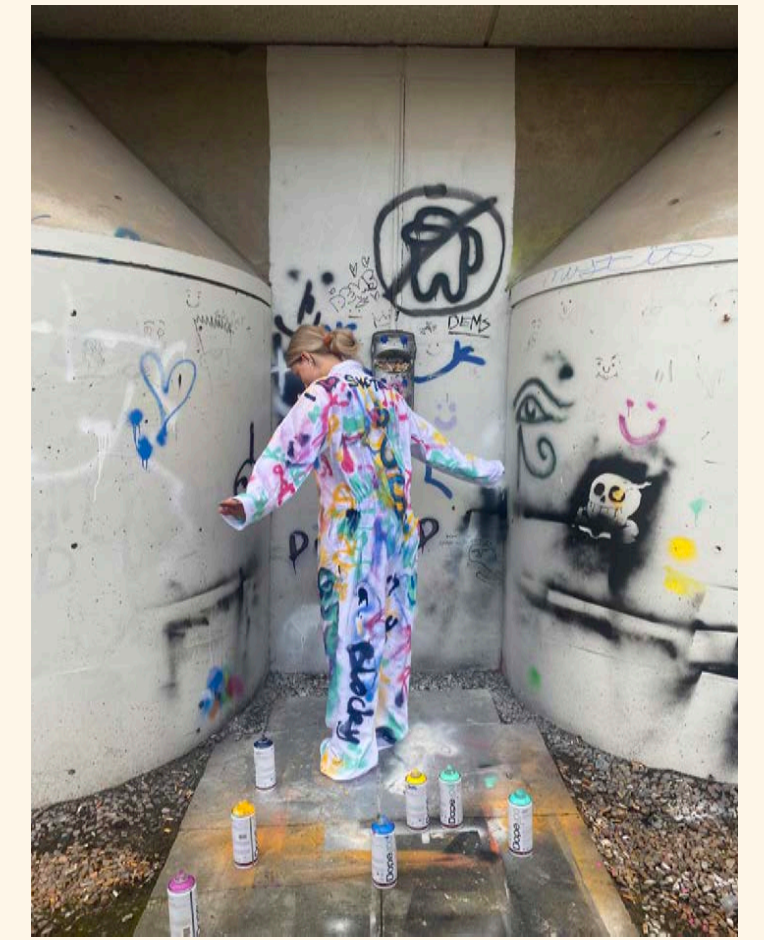


MODEL MAKING

During the development process, I made sketch models to experiment with form, layout and materiality. The model below is an experimentation of using Polycarbonate and how it would react to spray paint to allow more space for graffiti and street artists. It was interesting to see how lights effected the material when painted and how the colour and shadows were manipulated. Using this material helps add another challenge for graffiti and street artists as well as provide them with environment which they don't typically work in. Through out the design process I wanted to highlight **how we can view street art and graffiti in a more positive way** instead of subversive. Graffiti has the power to renovate our cities and streets and create more positive environments.



USER ENGAGEMENT



During the project I instigated a series of user engagement task including interviews but the most informative was my graffiti boiler suit. I wanted to gather information about peoples opinions in Dundee about street art as well as their feelings towards my project. I went up to random people in the streets of Dundee and asked them their opinions and asked if they would use spray paint to draw or write how they felt onto my boiler suit. It was really interesting to watch how people reacted to using spray paint for the first time and how their unease turned into enjoyment once they started. **I think it was a good way to challenge peoples opinions and allow them the opportunity to experience graffiti in a more positive way that they might not have experienced before.**

WHY DOES DUNDEE NEED A SKATE PARK ?

Currently in Dundee the only skate park is located in Dudhope park. Small, cramped and tucked away Dudhope does not have the facilities to accommodate a sport which is rapidly growing in popularity. Skateboarding now sits at 6th most popular sports globally.

Skateboarding and other skate sports have amazing benefits for individuals and the community.

1. Its a good for reliving stress
2. Skating is a very social sport allowing people of all ages to make new friends and connections in a world still recovering from a pandemic being social is a top priority in recovering.
3. Its a good form of exercise for strength, balance and cardio.

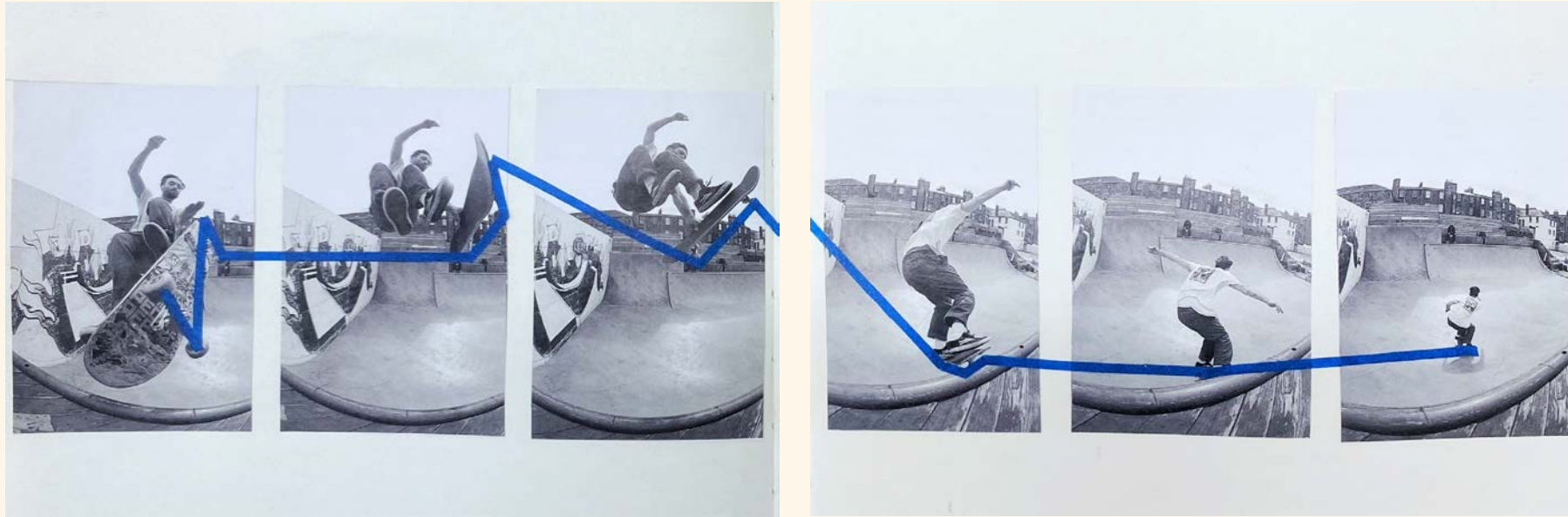
5.BEGINNER SKATE ZONE

4.URBAN GARDEN

6.OZZY'S



INSPIRATION

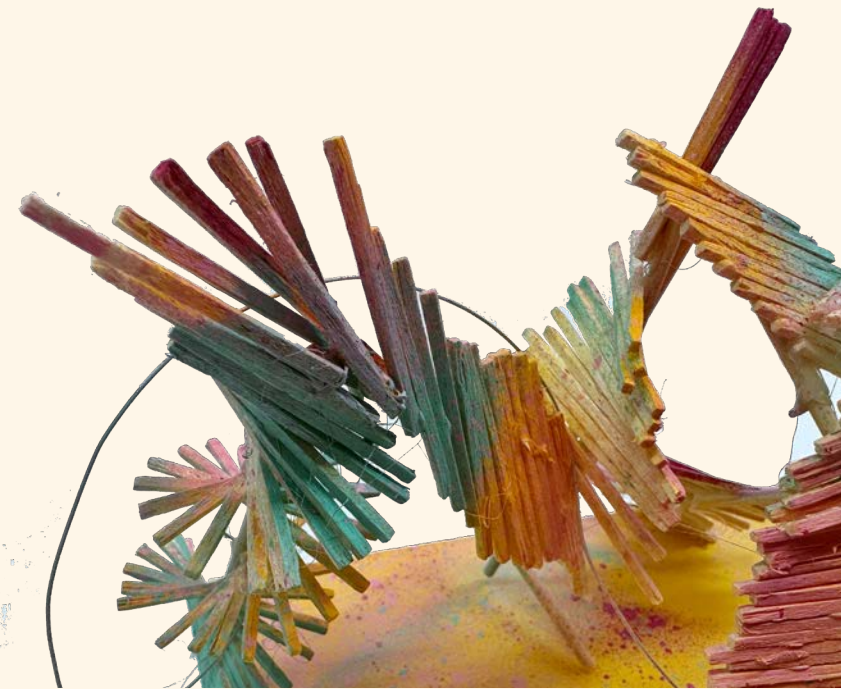


One of the main inspirations behind the entire design and layout derived from tracking movement of skateboarders and how they move and perform in space. Using the shapes I took from the tracking tasks I started to create 3D models that helped me visualise potential structures and layouts. Layout was a crucial element in my design not just for aesthetics but also safety. I needed to insure that skater and pedestrians had enough room to move about freely, I also had to ensure that there was enough space around ramps, jumps and bowls to avoid collisions.

EXPLORING SKATE MOVEMENT



MODEL EXPLORING SKATE MOVEMENT



2. INSIDE CAFE SPACE

SEAGATE SKATE

6. OZZY'S

BRINGING STREET CULTURE TO THE HEART OF DUNDEE

