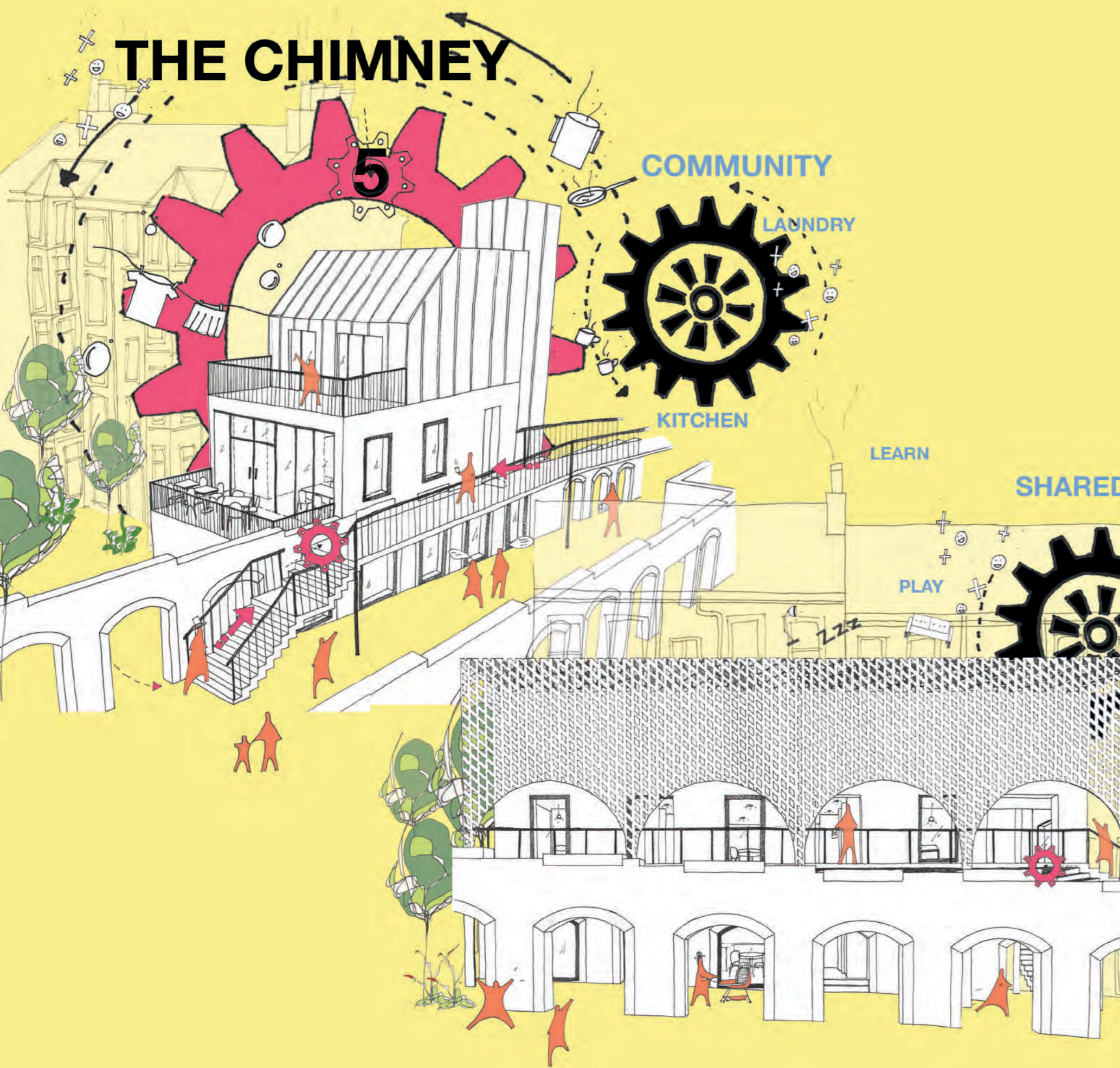


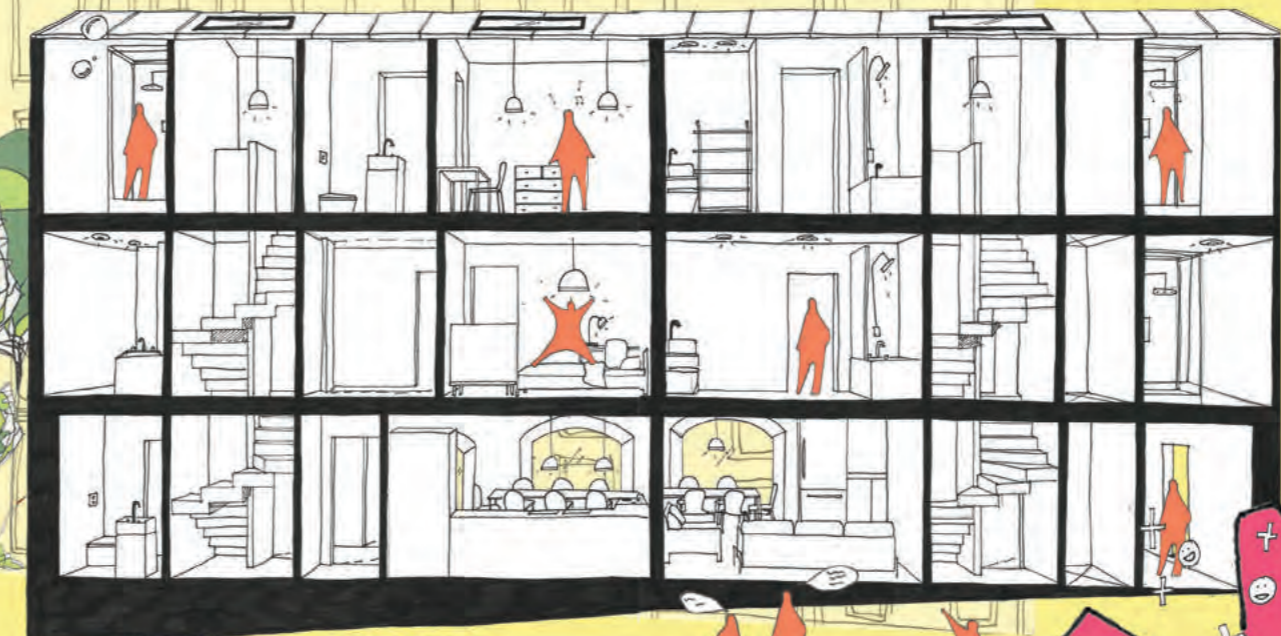
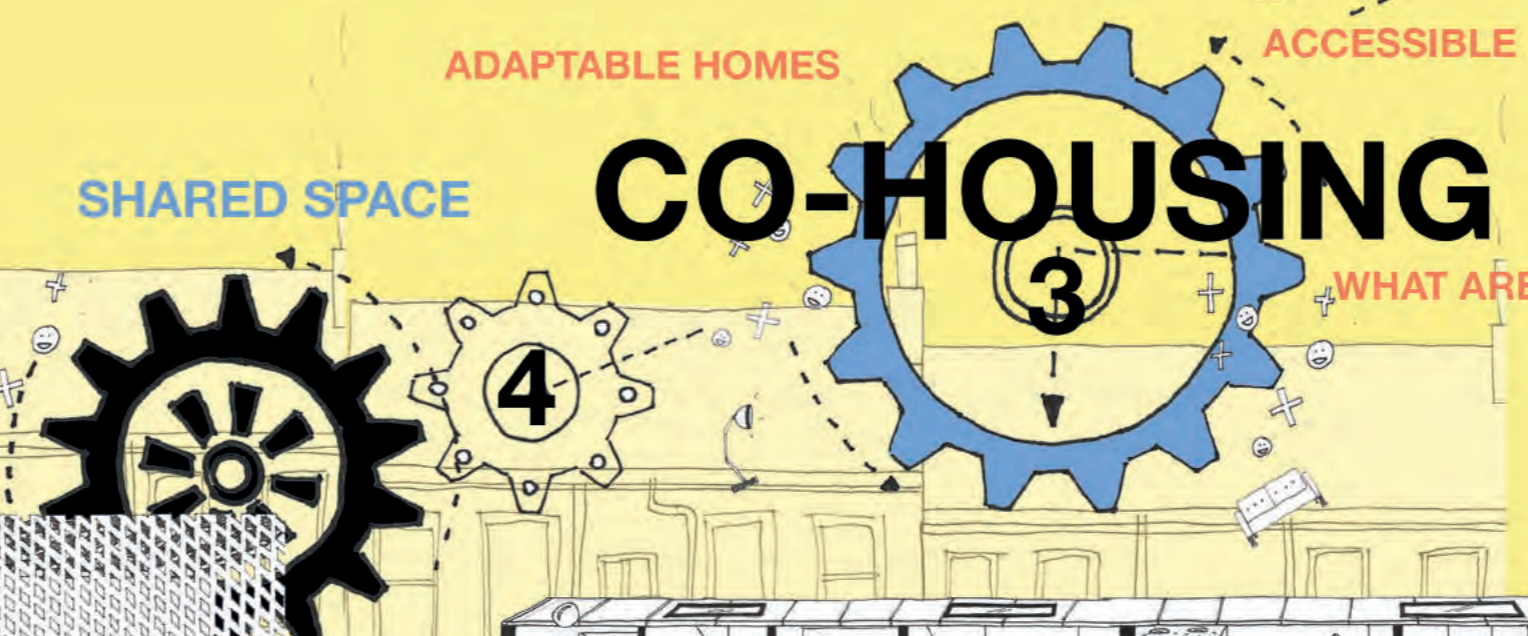
THE CHIMNEY



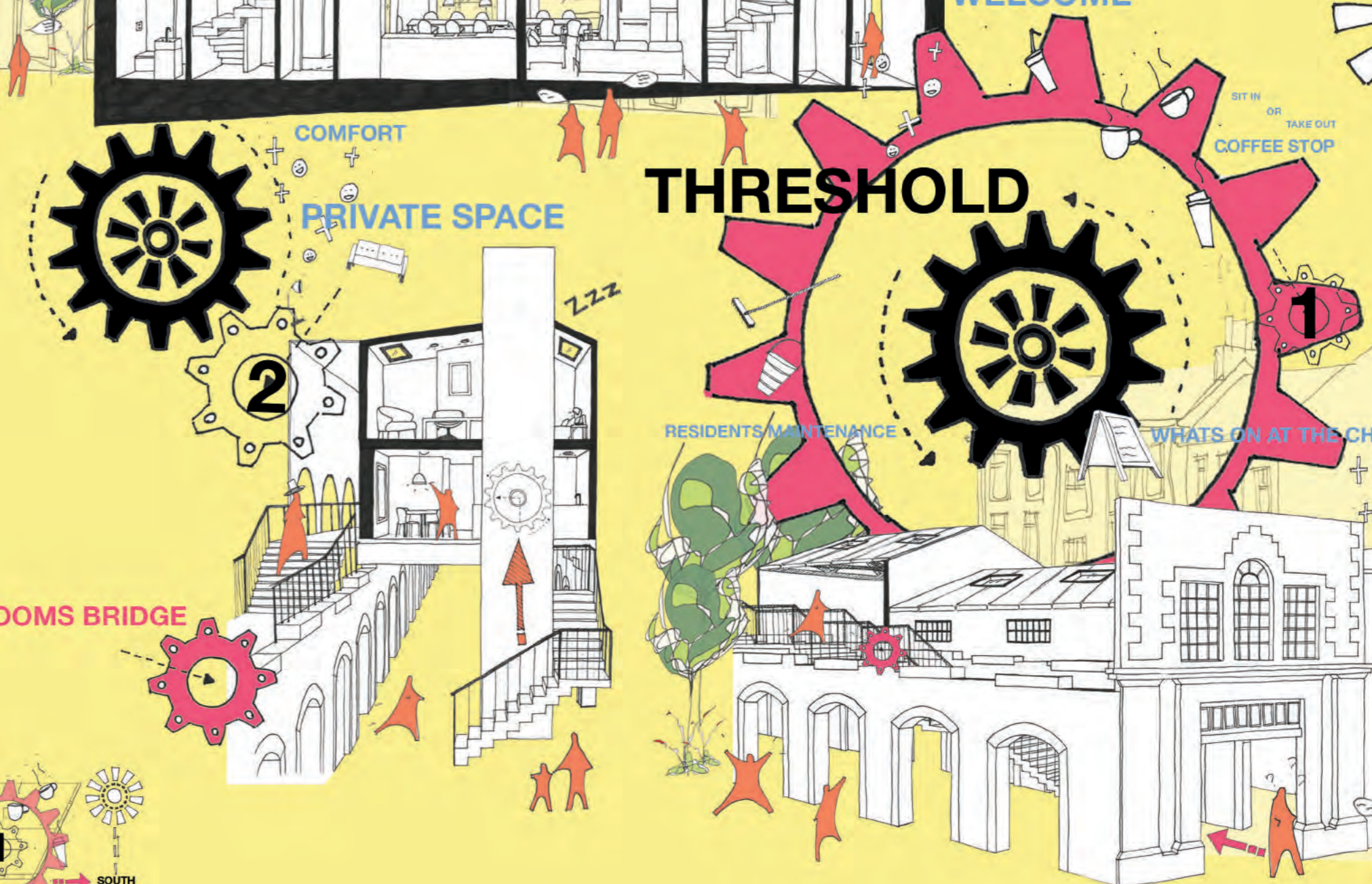
THE ARCHWAYS



CO-HOUSING



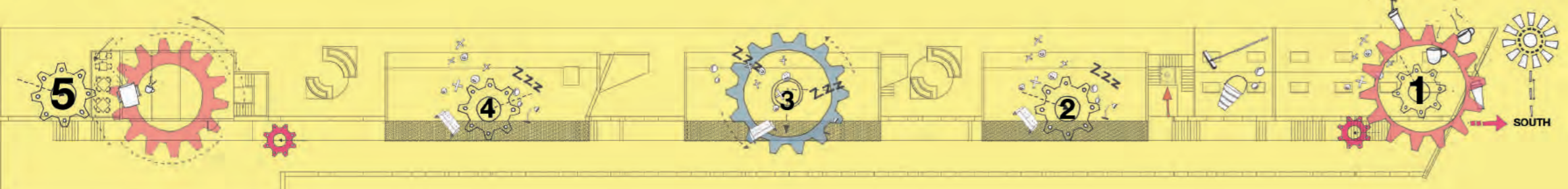
THRESHOLD



The Archways

A Co-Housing streetscape designed to meet YOUR needs.

The Archways is a concept that looks at how we can enhance living through all ages by creating adaptable homes that can cater to your individual needs as a resident. By expanding areas of circulation, it creates opportunities for intergenerational encounters through the use of shared spaces and facilities. This also includes the different thresholds of the streetscape that encourages both the residents and the public to circulate through the in-between spaces. As Herman Hertzberger says "In-between, is everything that is in-between the official, all things that have a name that have a significance. When you say, "a house", when you say "a shop" it has a name, it is a clear thing. But everything that is still open for getting significances is what you would call in-between." The idea being that in the in-between spaces is where all the un-expected interaction happens making it 'spontaneous' - an act of informal contact. Using the existing structure of the Tay Rope Works as an influence of the design, the industrial machinery that may have once been used to make rope, has now been used to create zones within this streetscape as a form of navigation, the Mill Houses, the Looms Bridge and the Chimney. These are all destinations that you may take as part of your daily routine.



STREET SCAPE

Meet the Designer

Zoe Phillips



As a designer I enjoy the process of researching and giving my projects a purpose. This past year I have been involved in the intergenerational housing network meetings (United for all Ages). It is a passion of mine to engage with people as part of my learning, and use that to fuel my projects with vast amounts of knowledge. It's no secret that everyone has been through a lot this past year due to the pandemic and so by using zoom as this years form of contact has been a positive experience. My Dissertation 'Designing to meet needs: How can we think past generations and design more inclusively' explores why we should focus less on age and more on the needs of individuals, avoiding making assumptions about the homogeneity of generations. To follow on, I used my dissertation to generate this years concept and I hope that this project reflects my research but also for who I am as a creative designer.

Find my dissertation here:

-unitedforallages.com
-generationsworkingtogether.org

Excerpts from Dissertation

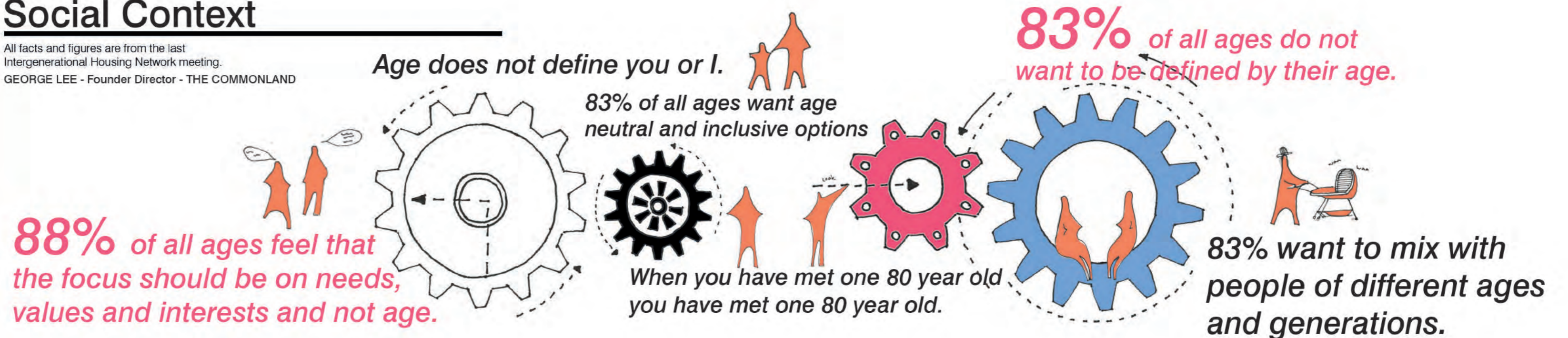
'Spatial Instruments' that have been orchestrated to form places of informal contact adding the spontaneity of the unplanned



ABOVE Hubertus House by Aldo Van Eyck, looking at the spatial thresholds that expands spaces of circulation and social encounters

Social Context

All facts and figures are from the last Intergenerational Housing Network meeting.
GEORGE LEE - Founder Director - THE COMMONLAND



Interviews



Stephen Burke
United For All Ages

'ALL SPACES CAN BE INTER-GENERATIONAL IF THEY HAVE THE RIGHT PURPOSE'



Bella Kerr
Generations Working Together

'HOW CAN WE CARE FOR EACH OTHER? OR HOW CAN WE BRING OUR COMMUNITIES TOGETHER? IT'S GOT TO BE ABOUT BRINGING PEOPLE TOGETHER AND NO ONE BEING LEFT ALONE'



Roland Karthaus
Matter Architecture

'SPACE SHOULD BE DRIVEN BY NEED AND NECESSITY'



Judith Ish-Horowicz
Apples and Honey Nightingale

'A KEY IMPORTANT SPACE IS HAVING SOME GARDEN SPACE, OUTSIDE SPACE'



Adrian Hill
AH-Architects

'SIMPLE THINGS LIKE HAVING CONTINUITY, LOTS OF PEOPLE LIKE ROUTINE'

BELOW AND RIGHT Student housing Weesperstraat, Amsterdam (1959-1966) by Herman Hertzberger



By having algorithms of space, it allows us to individually create possible equations of our daily routines



"In-between, is everything that is in-between the official, all things that have a name that have a significance"

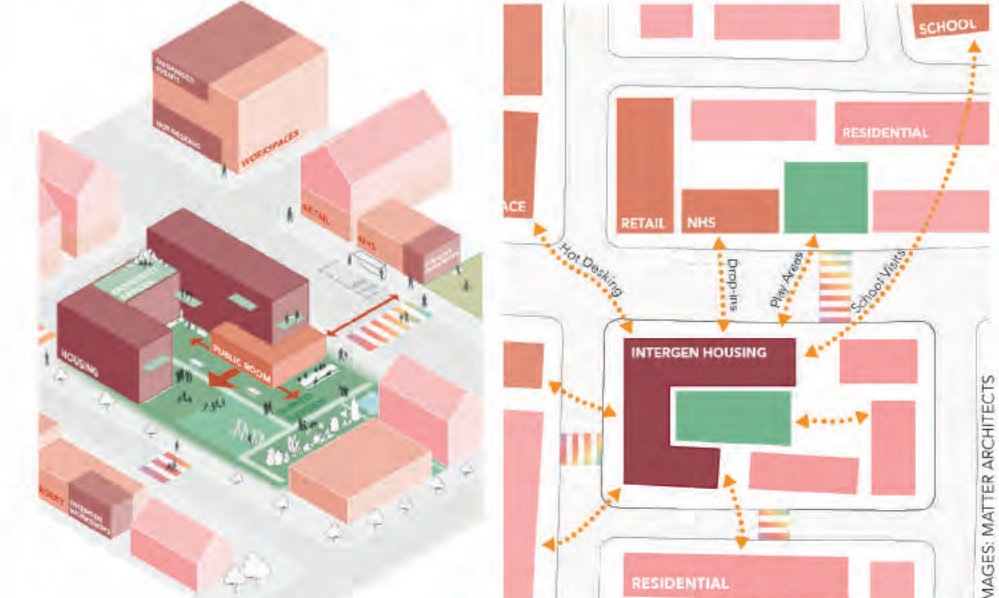
BELOW AND RIGHT Derwentcote in York by the Joseph Rowntree Housing Trust, a development of 483 properties



The lifetime home should be addressing all stages of ageing, from birth to death and the stages in-between to acknowledge the physical changes we all go through as well as the individual needs of everyone.



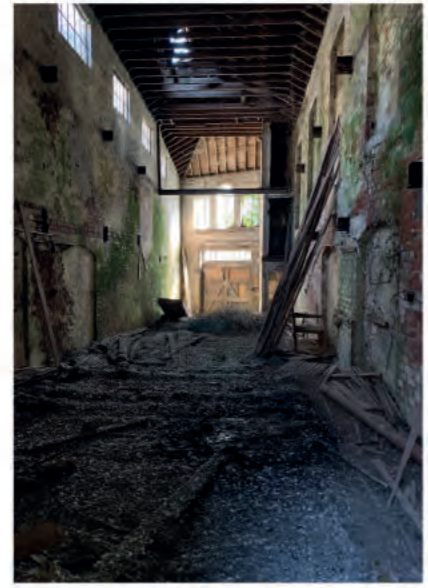
'Good design should be required in all housing, but key areas of design are essential to realising the benefits of intergenerational housing'



ABOVE AND RIGHT A proposed location diagram to show the opportunities to connect and enhance local networks. Matter Architects

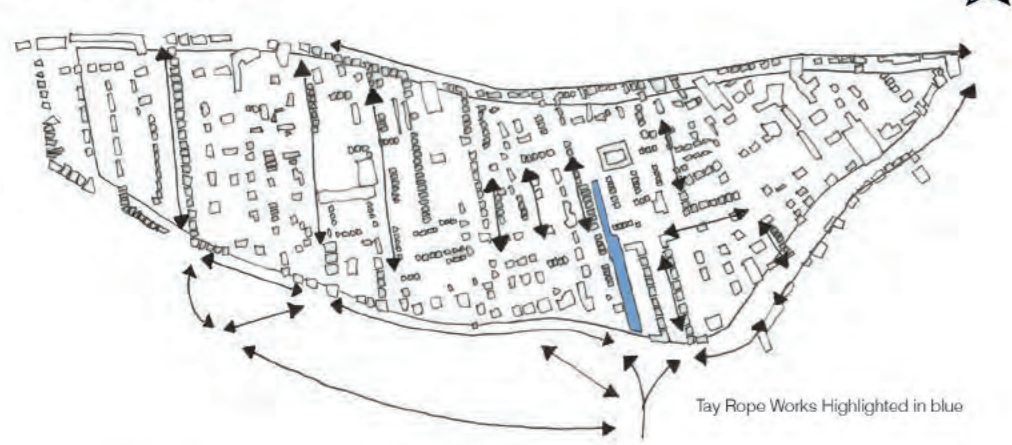
Site Visit The Tay Rope Works, West End Dundee

The Tay Rope works, 51 Magdalen Yard Road is situated in the West End of Dundee. The site dates back to 1837 and sits on a small hill decline down to the river Tay. It had been stated by the Dundee Courier (29 September 1987) that 'due to complicated process of manufacturing ropes, generally used for Dundee's whaling industry, the works had a most unusual shape - broad at the Perth Road end, then forming a narrow corridor which stretched down to Magdalen Yard Road.' Unfortunately due to several fires, the long 200 yard rope walk (evidenced by the remaining metal beams) burned from end to end leaving the remaining structure derelict. In its current state it has been engulfed by overgrown greenage as well as pigeons being the main residents of the building.

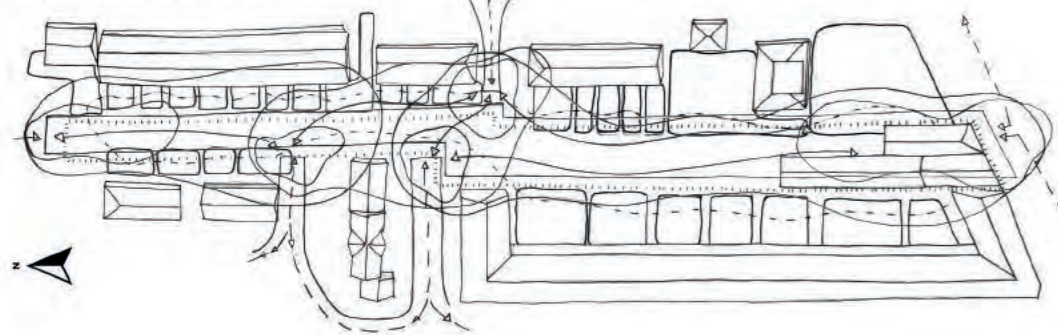


Site Analysis

A map that shows the key areas of foot traffic of the local area.

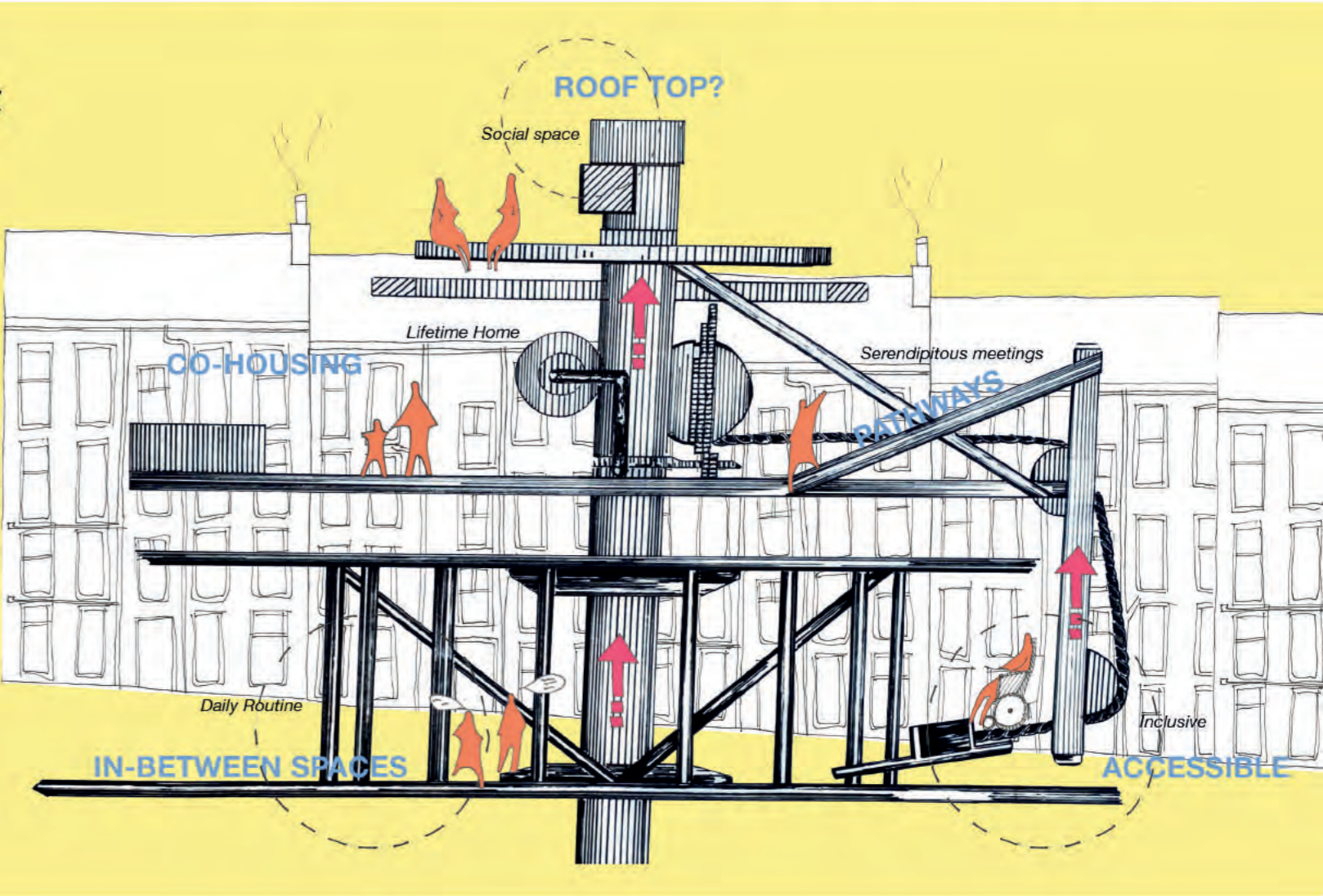
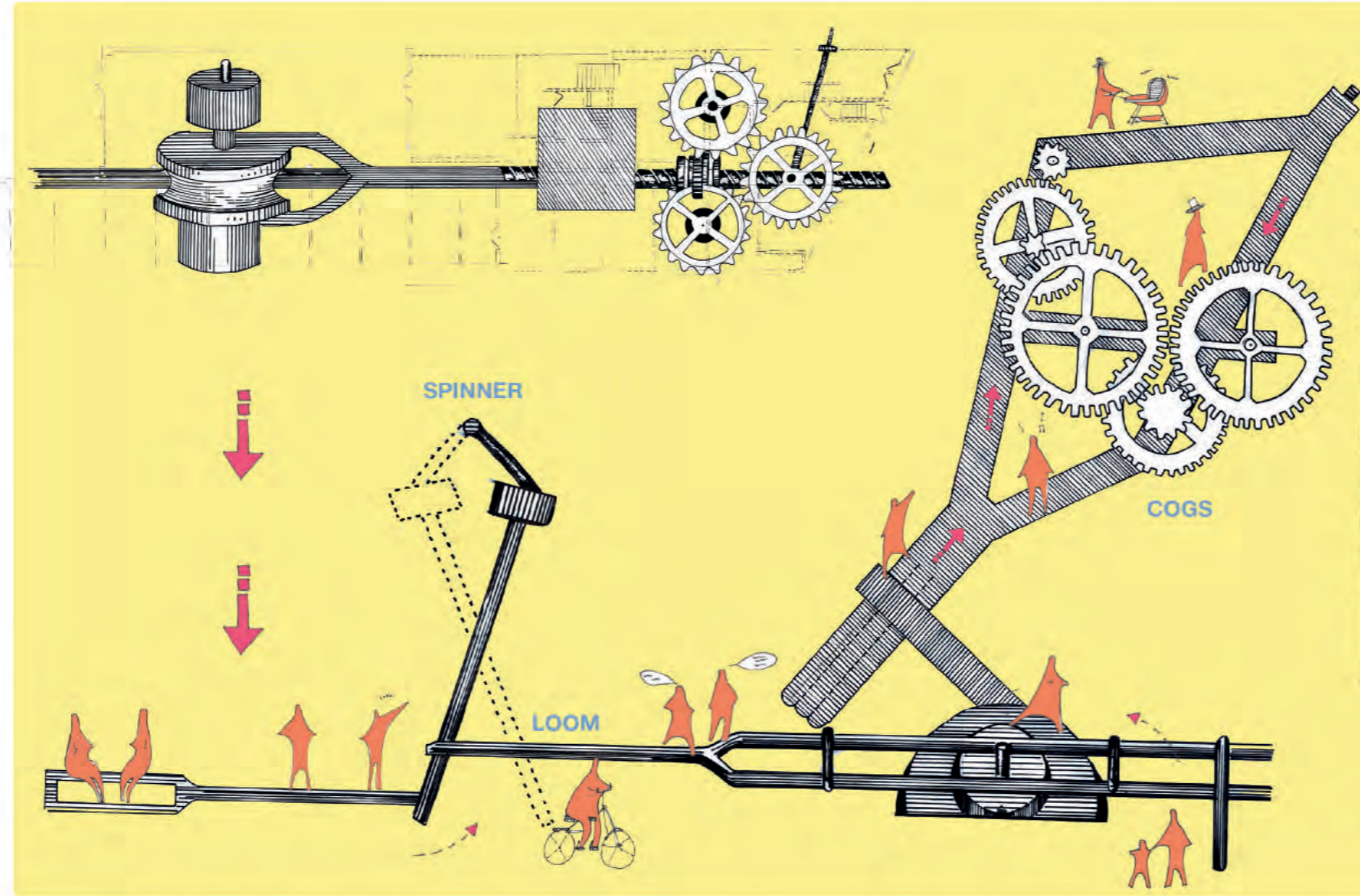
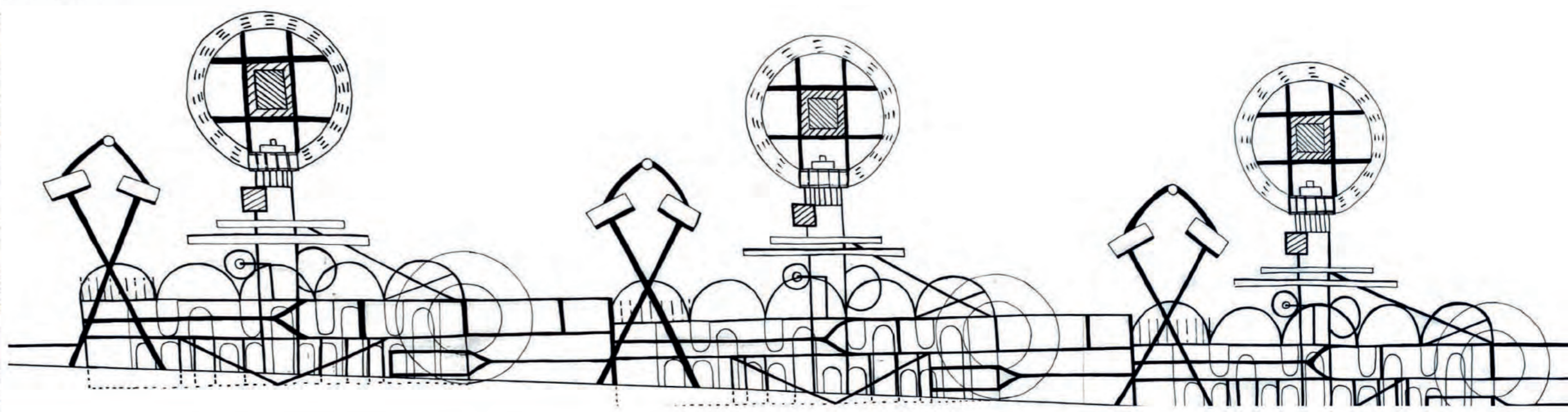
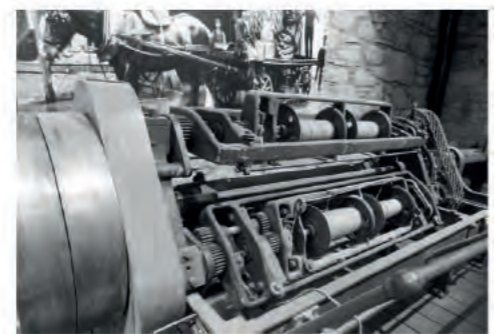


Looking at the different possible entrance points

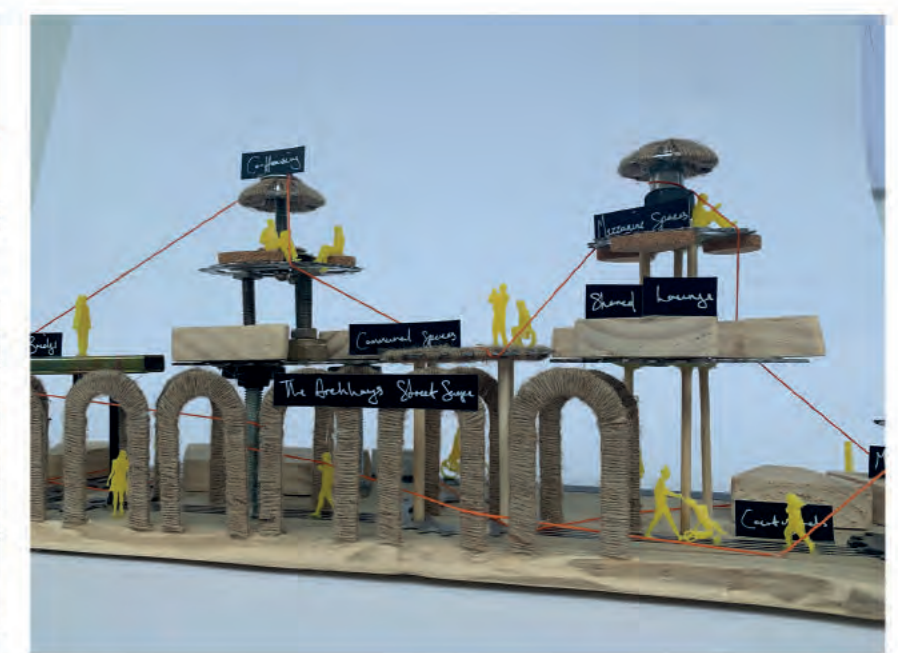
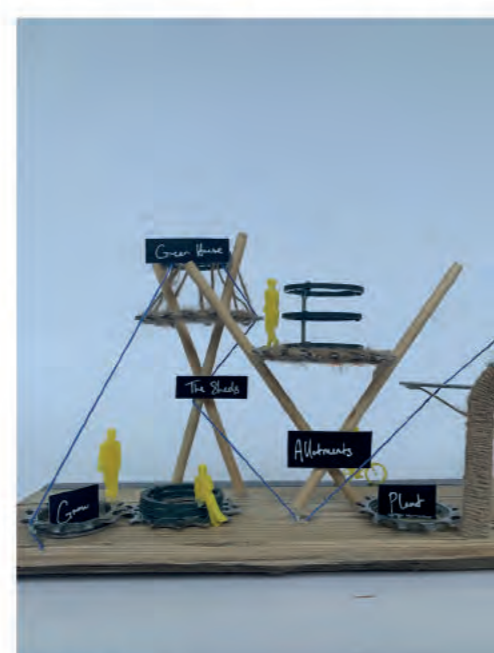


Design Process

The influence of the Jute Rope machines



Zoning Model

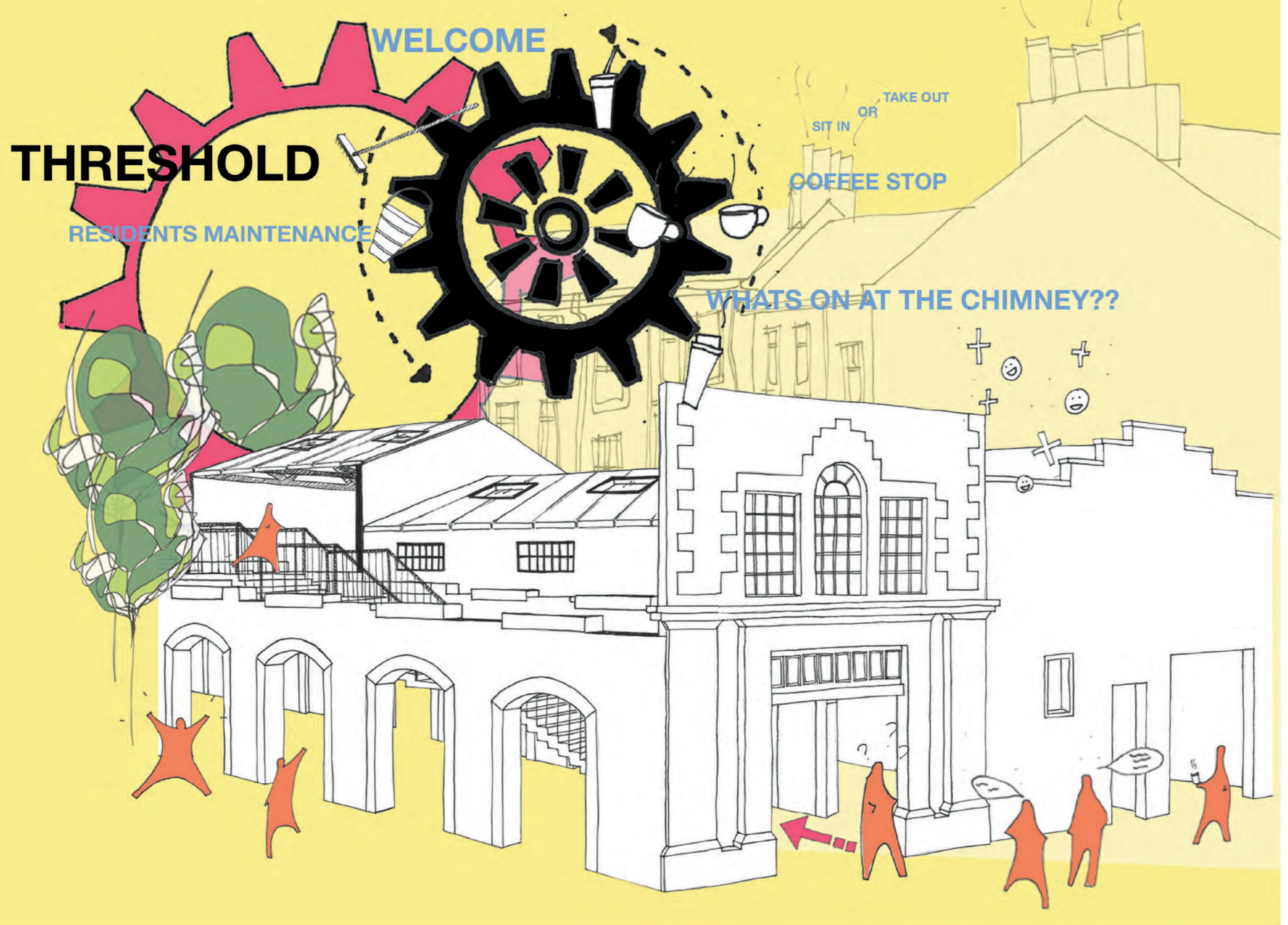


ABOVE AND RIGHT The Spinner, a space to grow, connect and play

ABOVE The chimney, a place of warmth from all of the steam of cooking and from doing laundry.

ABOVE The Looms Bridge, connecting the Mill housing to the Chimney

ABOVE The Mill Houses, connecting neighbours through different pathways

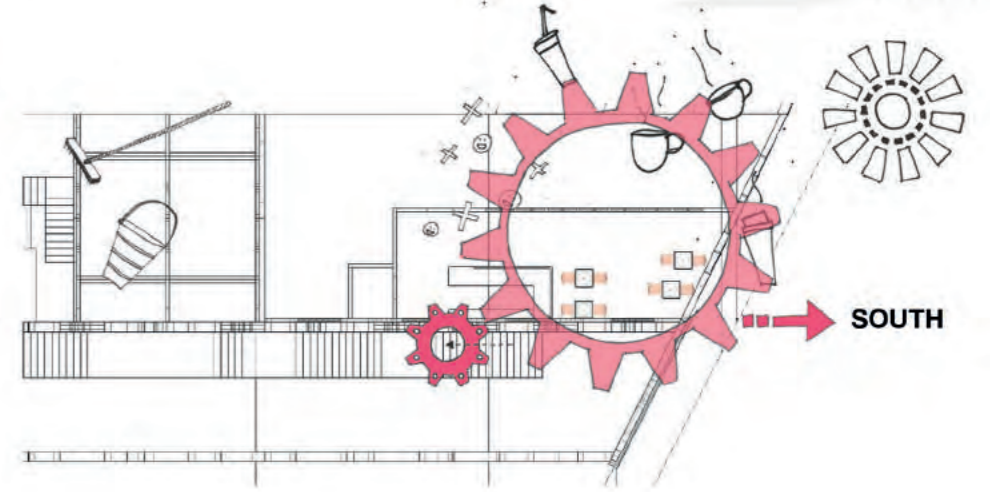


The Threshold

An entrance to a street scape, coffee shop and a sheltered path that allows you to decide your route through the site. Creating that unknown experience of who you may bump into.



Plan



BELOW Streetscape entrance



BELOW Coffee stop



The Design Proposal

The Archways, a co-housing street scape is designed on the basis of fulfilling our daily needs. Its looks to create open opportunities of connecting residents with one another as well as the outer community by expanding areas like thresholds, stairwells and lifts, courtyards and a bridge that connects each space. This is all part of the idea of creating naturally occurring connections between all ages.

The existing archways of the site have been punctured to create in-between spaces for spontaneous encounters between neighbours. Increasing the public use of the street scape.

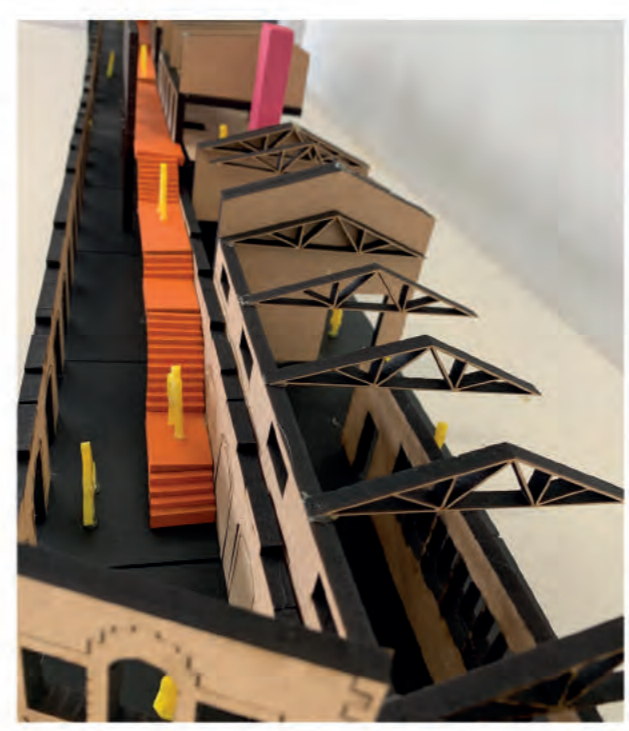
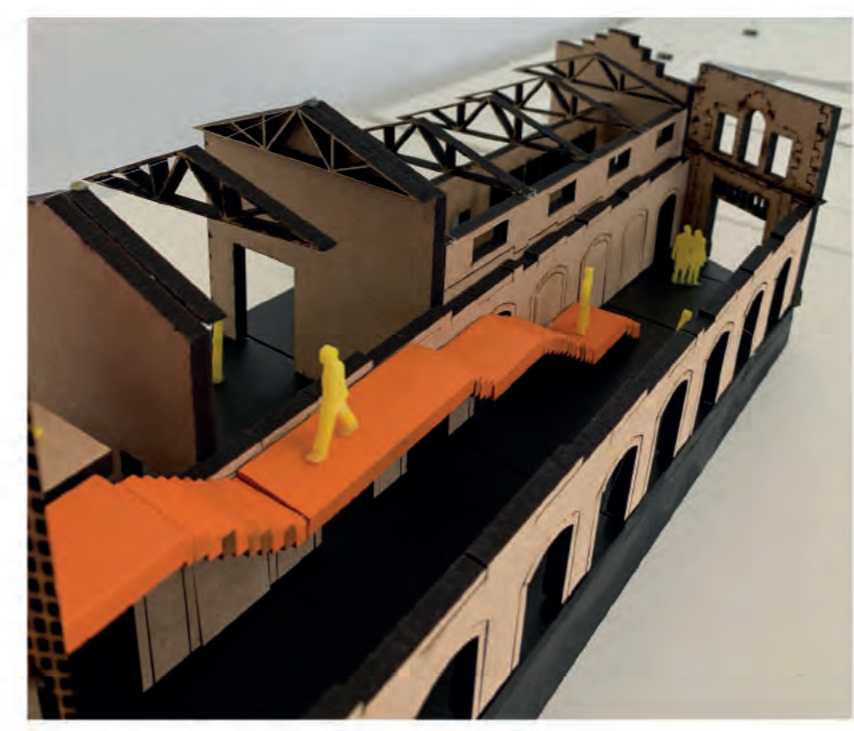
- 1 The Threshold
- 2 The Mill Co-Houses
- 3 The Chimney

Here is a link to The Archways Video



<https://www.youtube.com/watch?v=pjTbxwF-Q3k&list=PL3k&list=PL3k&list=PL3k>

BELOW Images of final scale model at 1:75



THE MILL HOUSES

CO-HOUSING

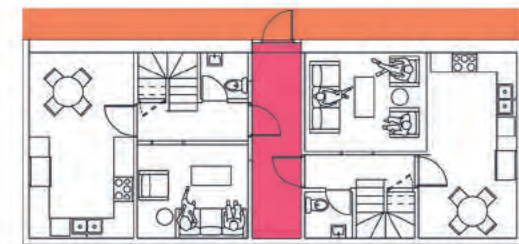


BELOW
Images of final scale model at 1:75

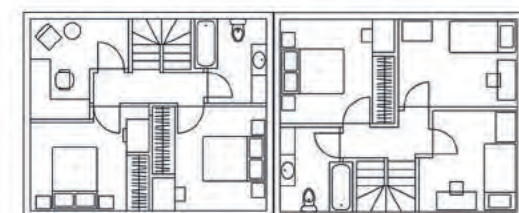


Mill 1

A shared entryway allows these two houses to be connected, expanding the area of social interaction between the neighbours when entering and leaving their homes



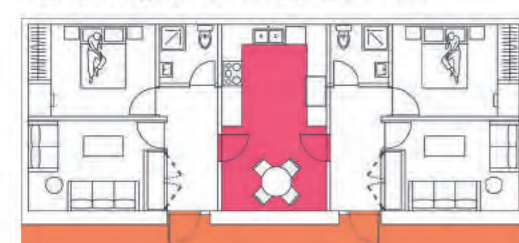
Upper Ground floor



First floor

Mill 3

The opportunity to have a mix of private and shared living with the resident next door.



This Co-house is designed as one bedroom flats that share a kitchen space that is placed in the centre of the space. This is to help generate interaction between residents who may reside by themselves but who may also be in need of some form of contact. By sharing the kitchen space this allows the residents to enjoy meal times with one another. However by having separate entrances to their dwellings this means that they can have some form of privacy too which is also just as much as a need of our daily routine.

Mill 2

Home 1 looks at a large blended family setting, creating rooms that can be adapted through the different stages of daily life for each individual.

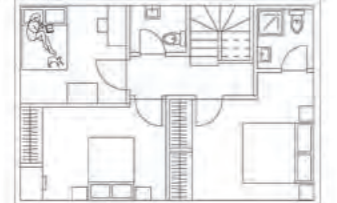
Home 1
Ground floor



First floor

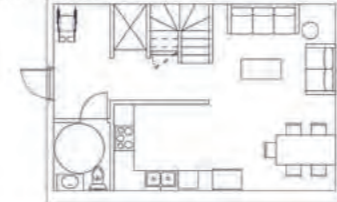


Second floor

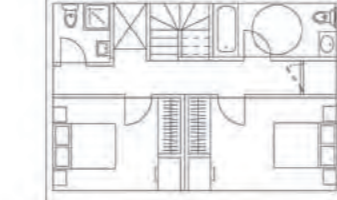


Home 2 is an inclusive living environment that looks at the accessibility of the space. Creating open plan living for easy maneuvering for those who may need wheelchair assistance or other forms. The home also includes an assisted lift to allow the home user to access all floors and for them to not be excluded from the rest of the house hold.

Home 2
Ground floor



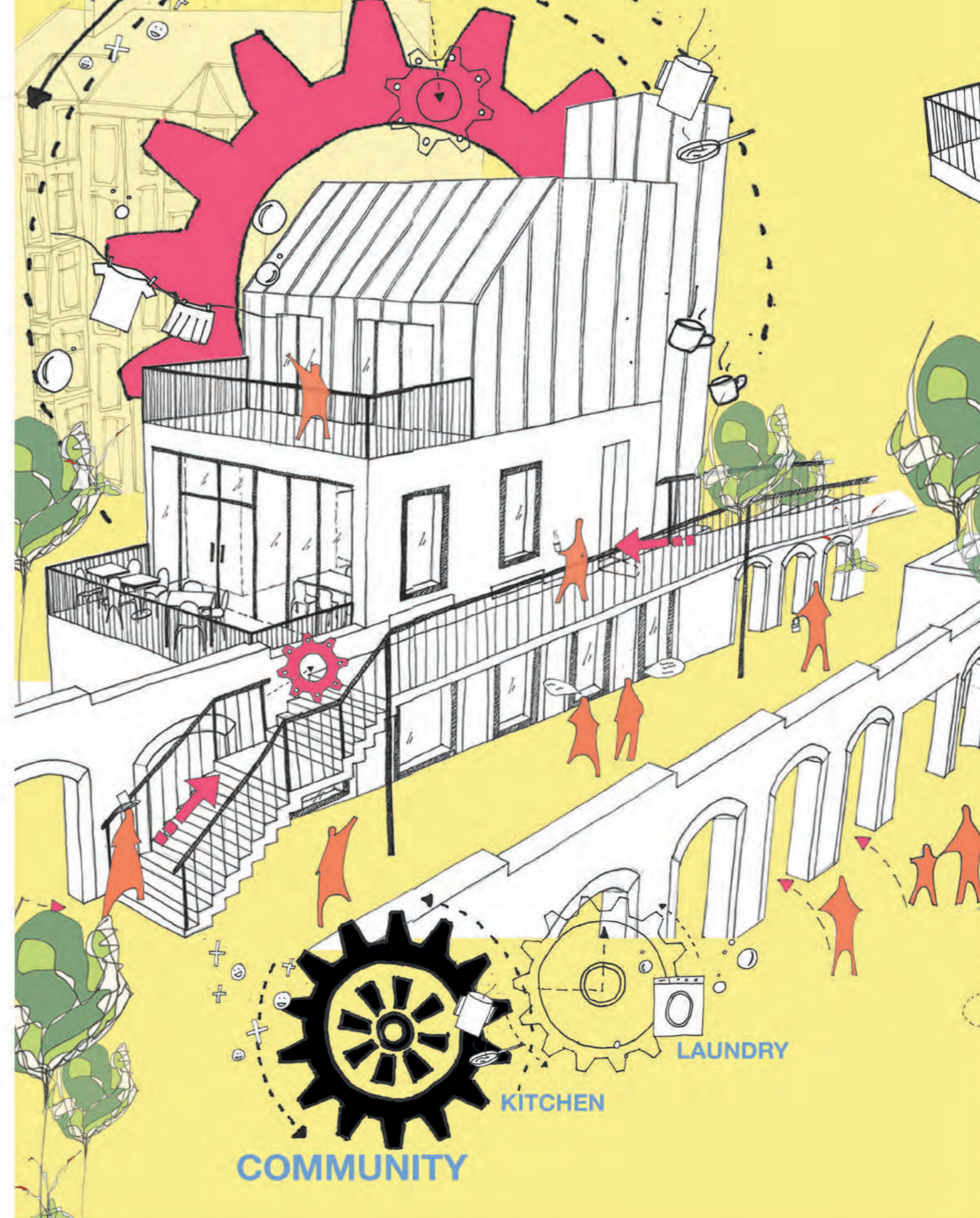
First floor



Second floor

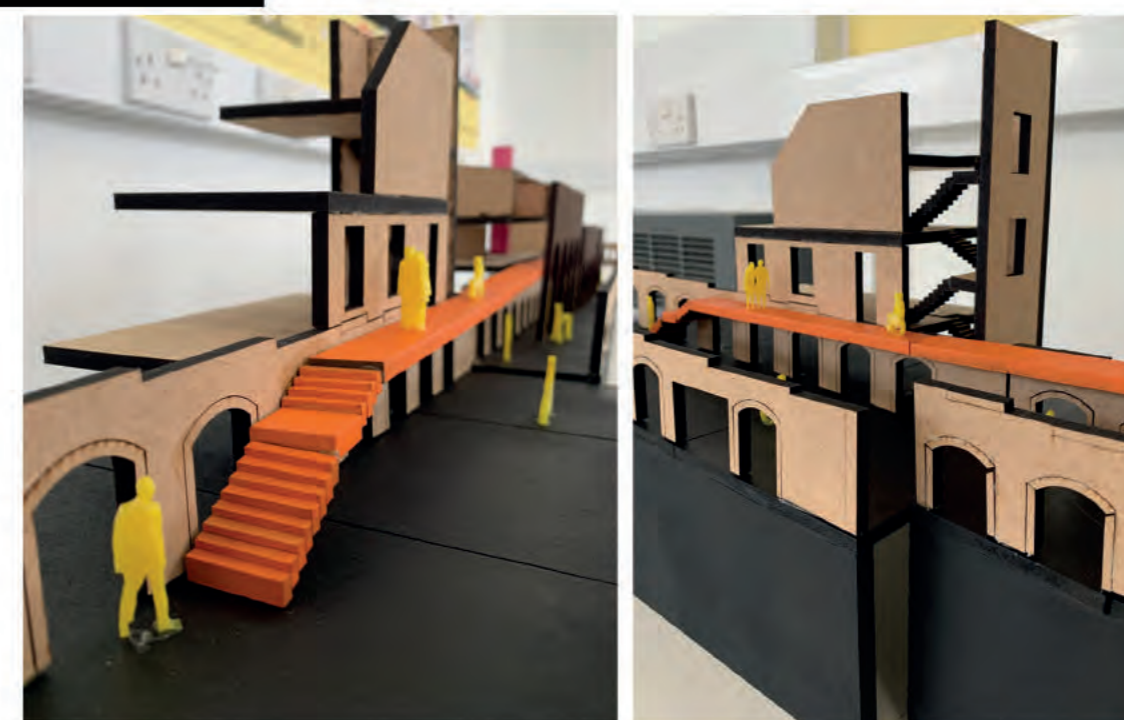


THE CHIMNEY

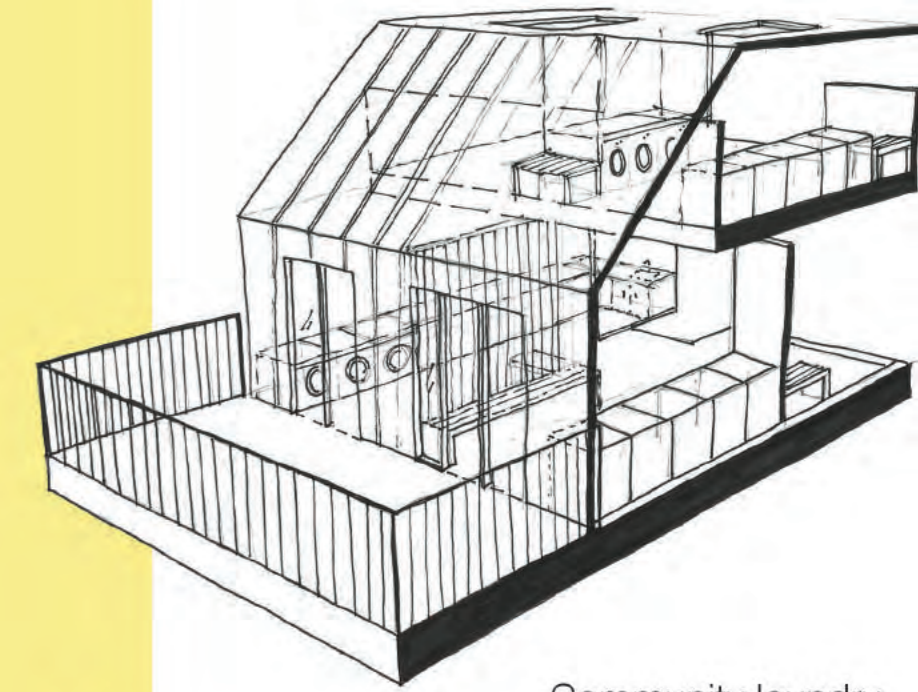


The Chimney

A place of warmth that connects the community through the need of eating, socialising and the necessity of washing laundry.

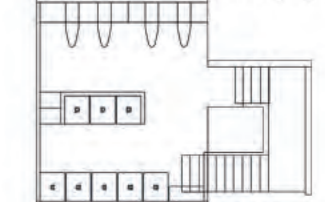


ABOVE AND RIGHT
Images of final scale model at 1:75

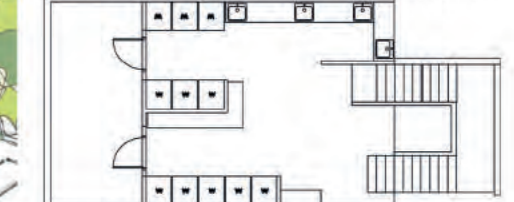


Community laundry

Mezzanine Level - Tumble drying space with ironing facilities

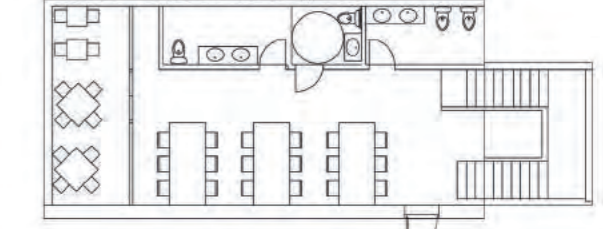


Second floor - Laundry with outdoor drying space



Community Kitchen

First floor - Upper level seating/ Toilets



Ground floor - Community Kitchen/Cafe

