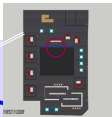
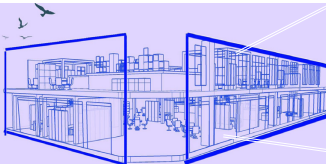


DECOS6



A PROPOSAL FOR A LIVELY HOSPITALITY SPACE LOCATED IN ROBERTSON'S OLD FURNITURE WAREHOUSE. A SOCIAL SPACE WHERE ADULTS CAN BOND OVER DELICIOUS LOCAL PRODUCE, WINE & ENTERTAINMENT, CELEBRATING THE ART DECO NATURE OF ROBERTSON'S BUILDING ITSELF AND DYNAMIC GEOMETRIC & GRID INSPIRED FORMS ACROSS TWO ENERGISED FLOORS.



GROUND FLOOR - PERFORMANCE 1

- INCLUDES 2 DINING
- OPEN KITCHEN
- DINING HALL
- BAR SEATING
- STAIRS LEADING UPSTAIRS TO PERFORMANCE 2

1ST FLOOR - PERFORMANCE 2

- PERFORM & RELAX
- STAGE
- LIVE MUSIC
- DRINKING HOLE
- OPENING LOOKING DOWN TO GROUND FLOOR



CONCEPT

TO DESIGN A PROJECT AIMING TO INJECT VIBRANCY & LIFE INTO REHABILITATING OLD FURNITURE STORES THROUGH A HOSPITALITY SPACE ENCOURAGING PEOPLE TO BE SOCIAL AND ENJOY THEIR LOCAL PRODUCE, WINE & LIVE ENTERTAINMENT. THE PROJECT IS AN ADAPTIVE REUSE OF THE REHABILITATING OLD FURNITURE STORES WITH INTENTIONS TO REUSE THE ART DECO PATTERNED BUILDING INTO AN EXCITING SOCIAL SPACE. INSPIRED BY THE ART DECO NATURE OF THE SITE ITSELF AND DYNAMIC COLOR SCHEMATIC AND GRID FORMS.

Understanding the site of Rehabilitation.



ZONING DIAGRAM MODELS



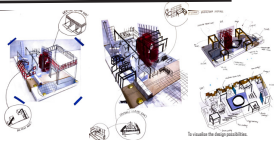
Exploring dining table concept through sketch model.

EXPLORING SPATIAL POSSIBILITIES



Layers of zoning diagrams for both floors.

SKETCH DEVELOPMENT



To visualize the design possibilities.





EXTERIOR & INTERIOR COMBINED OUTLINED VISUAL

SKETCH MODELS



Models of living dining space around the restaurant area. Showing a glimpse of the open kitchen and dining bar.

FINAL DESIGN VISUALS

Final model of "DODGEE" showing the space through a mixed two floor model. The floors show the design fully allowing limited viewing of exterior walls and more attention to be focused on to the design and interior itself. Each area of the space is defined through associated word suggestions and the creative design structures that make up the space, showing of the design features and functions.



Isometric view of ground and first floor.



Perspective view of ground and first floor.



FINAL ISO MODEL



Both floors positioned on top of each other portraying a two story spatial experience.



DECO56

DINE, UNWIND & SOCIALISE



DINING SPACE



STEP INSIDE - PERFORMANCE I

The ground floor space is divided into four main areas, the open kitchen, dining area, bar & social seating. Each area has been designed and coordinated around the Art Deco nature of Robertson's staff, which inspired the main design themes of geometric & grid forms creating the hospitality venue.

Stepping foot into the venue you are faced with a large lively dining space with grid and geometric inspired dining furniture dotted around. The open kitchen appears to your far left as you enter the building. This is where the first act commences, enjoy watching skilled chefs cook your favourite dishes using local produce, stay tuned for act two upstairs where the second performance will begin later in the evening.

Adults are brought together underneath the geometric dining furniture. The structure creating a large cube frame connection, creating social dining and drinking experiences underneath for all to enjoy.



THE BAR



OPEN KITCHEN



DINING HUT & PREP AREA

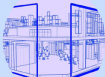


The grid bar area allows guests to enjoy various beverages and cocktails to their fancy, enjoy these with your meal and after in the social seating areas.

The social seating scattered across the bar area, located at the rear of the space offer comfort for those to enjoy a drink with friends and family. This area provides the perfect starting ground to continue the night upstairs to the performance space where live music and comedian events are showcased.



SOCIAL SEATING



HEAD UPSTAIRS FOR - PERFORMANCE 2

After an evening of dining, drinking and socialising downstairs the evening is not over yet. Guests can make their way upstairs to the first floor where the second act will commence. Making up the staircase guests can find themselves striding into another lively and vibrant space. The relaxed seating area is positioned right next to the stairs and behind the performance stage where people can sit, relax and enjoy a drink for a moment before, after or during the performance.



DRINKING HUTS



RELAXED SEATING



As guests make their way across the first floor to the front of the building, there are two seating options to enjoy the live performance from. The drinking hut seating and coloured table squares. The huts offer a more private and allocated space for the guests whilst getting a comfortable amount around the glass table.

BAR & HUB



At the far end, the bar area offers a range of beverages and cocktails for all to enjoy during their time watching the show. The golden bar stools also provide guests with a 'bit at the bar' option and perfect viewing of the stage, whether a hut or a chat with friends at the relaxed seating positioned behind the stage takes their fancy, guests can make a night of it and enjoy a lively social get together.

THE STAGE



Central to the first floor space takes the performance stage. The main event of the evening for some. Guests can enjoy live music from bands or a comedian act depending on what event is scheduled for that weekend. Guests have the freedom to dance, enjoy the music and socialise with each other till late.

The two floor hospitality venue 'ROCKED' offers a guaranteed night of excitement, enjoyment and entertainment. Both floors offer a unique social experience where guests will leave thrilled and wanting to come back the following weekend. A packed dining, drinking & social experience for all.



Taking inspiration from the crumbling red brick work exterior of Robertson's building itself led to forming the interior beams, taking outside inside.