

RESUSCITATE

REVIVING THE HEART OF OUR CITIES

"WE ALL NEED TO HELP PREVENT AN
"EXTINCTION EVENT" AMONG RETAILERS
ONCE THE PANDEMIC IS OVER"
- JOHNATHON PRYNN

01
THE FACADE

02
THE HEART

03
PEDESTRIAN HIGHWAY

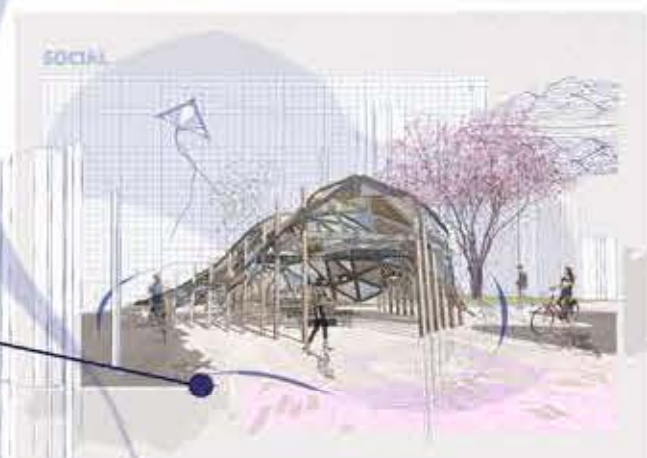
 SOCIAL ZONES
 PLACES TO SHOP
 AREAS TO SETTLE



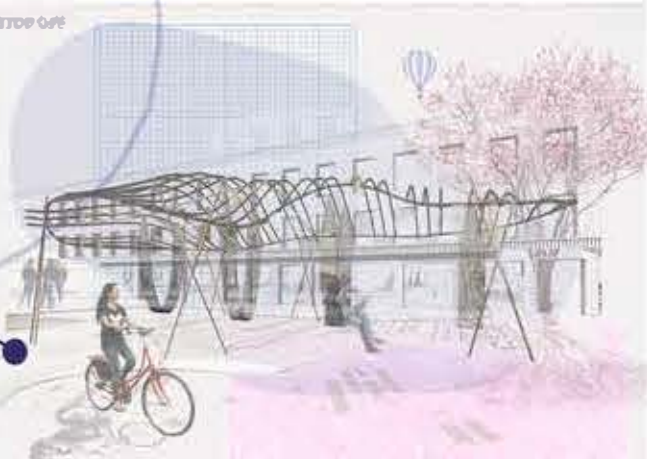
SHOP



SETTLE



SOCIAL



STOP OFF

RESUSCITATE IS A DESIGN INTERVENTION THAT AIMS TO REVIVE THE CITY CENTER BY ENCOURAGING THE PUBLIC TO DWELL WITHIN THE STREETS. THIS IS DONE THROUGH THE USE OF ORGANIC STRUCTURES INSPIRED BY A MICROSCOPIC VIEW OF COVID-19. THESE STRUCTURES PROVIDE PEDESTRIANS WITH PLACES TO SHOP, STOP OFF, SOCIALISE AND SETTLE. THE COMBINATION OF THESE ELEMENTS WITHIN THE STREETS WILL HELP INCREASE PEDESTRIAN FOOTFALL AND THEREFORE HELP BENEFIT THE BUSINESSES SITUATED WITHIN THE CENTER. THE CORONAVIRUS PANDEMIC HAS HAD A DETRIMENTAL IMPACT ON THE ECONOMY LEAVING CITIES SUCH AS DUNDEE BARREN AND EMPTY. THIS INTERVENTION AIMS TO COMBAT AGAINST THIS ISSUE BY CREATING A PLACE FOR EVERYONE. THE DESIGN SYMBOLISES THE STRENGTH AND ADAPTABILITY THAT HAS BEEN SHOWN THROUGH THIS PANDEMIC.

RESEARCH - SOCIAL CONTEXT AND SITE ANALYSIS

“WE ALL NEED TO HELP PREVENT A “EXTINCTION EVENT” AMONG RETAILERS ONCE THE PANDEMIC IS OVER” JONATHON PRYNN

TARGETING SMALL INDEPENDANT BUSINESSES

CHOOSING A SITE WHERE THERE COULD BE A CENTRAL HEART THAT WOULD SPREAD OUTWARDS

OCCUPYING THE BUSIEST STREETS WITHIN THE CENTER

“ALL STORE TYPES, EXCEPT NON-STORE, REACHED RECORD PROPORTIONS OF ONLINE SPENDING IN APRIL 2020 AS SOME STORES SHIFTED TO ONLINE ONLY TRADING”

NEW RETAIL EXPERIENCE

NEW CITY CENTER LOCATION

ALBERTA LAND

WELLINGTON CENTER

UNINTERRUPTED HUMAN EXPERIENCE

SOCIAL
SPATIAL
PHYSICAL
EMOTIONAL

STORE CLOSING

CLOSING DOWN

LOCATION - MARKET INSPIRED STREET SCAPE

NEW CITY CENTER LOCATION

ALBERTA LAND

WELLINGTON CENTER

KIELER CENTER (SITE)

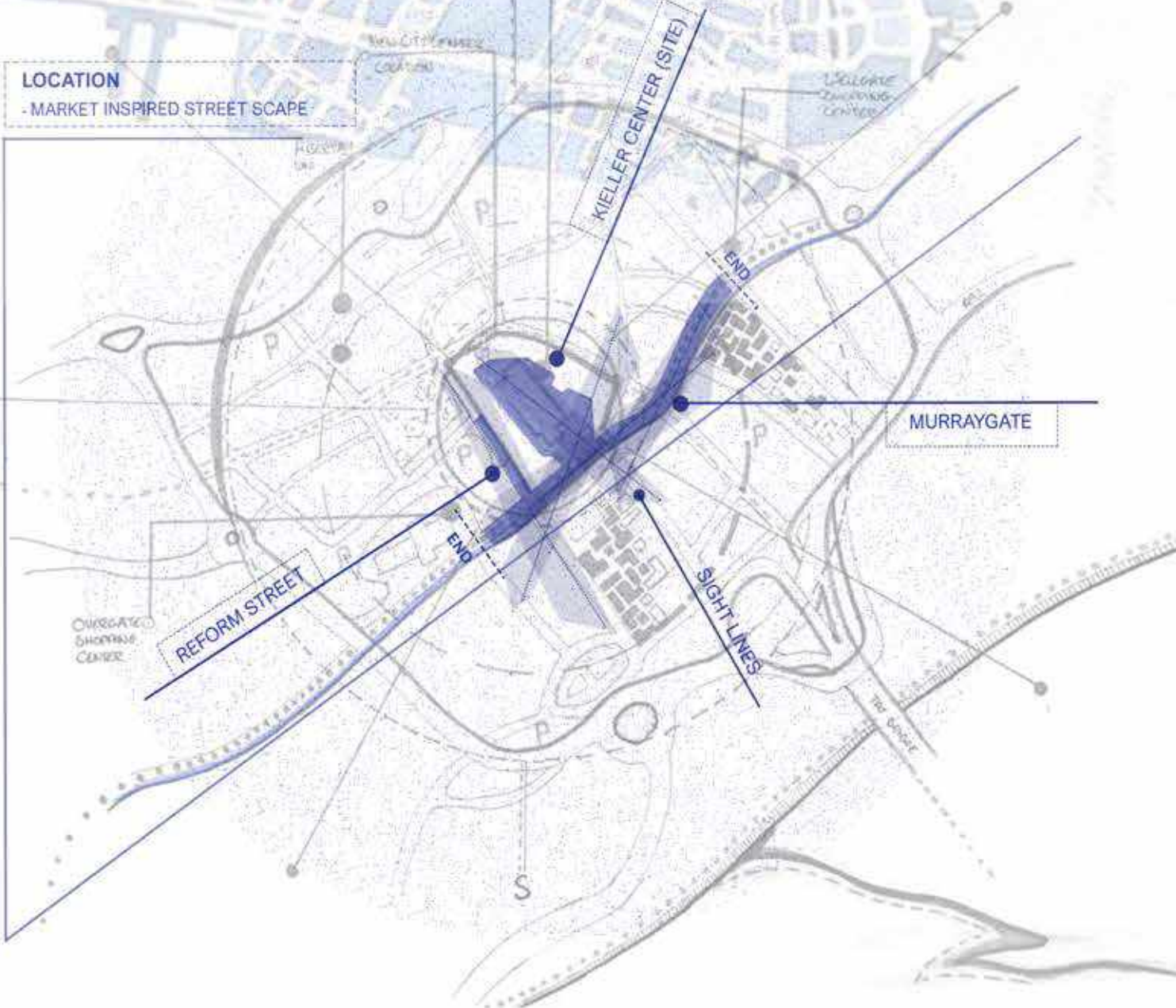
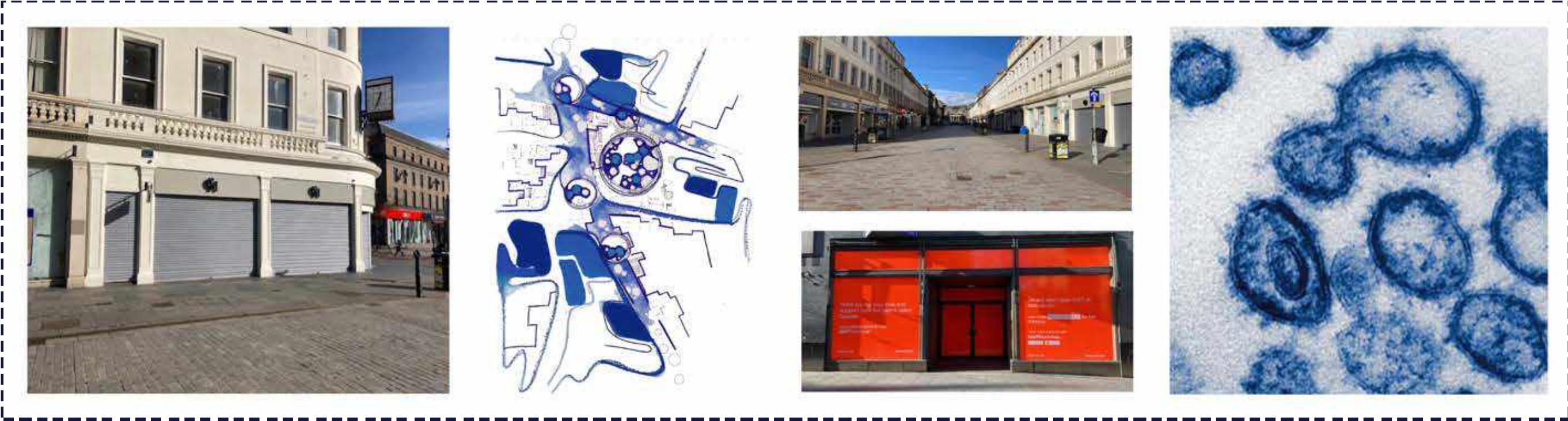
MURRAYGATE

REFORM STREET

SIGHT LINES

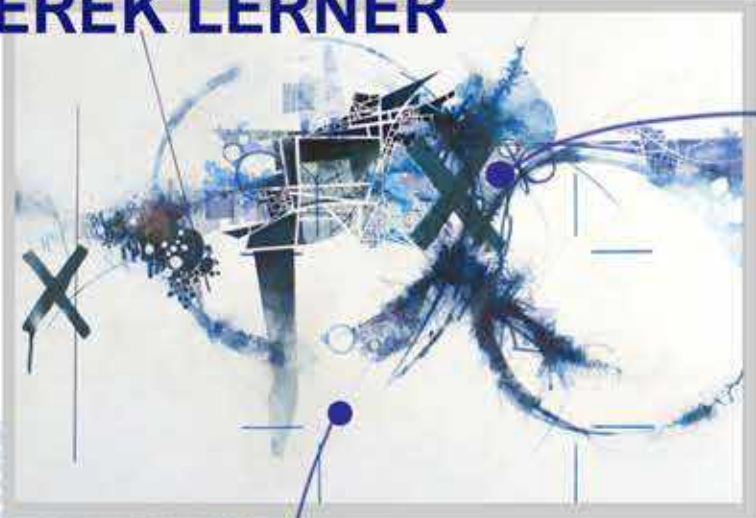
THE BRIDGE

SITE IMAGES /COVID-19 REFERENCE



INFLUENCE & CONCEPT DEVELOPMENT

DEREK LERNER

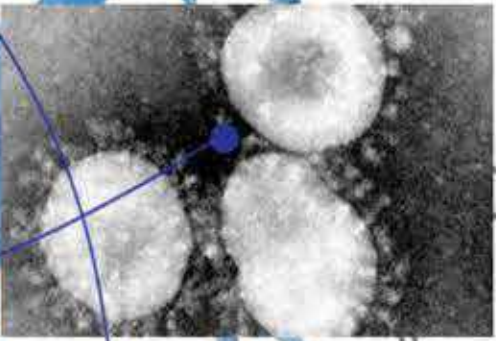


In 1994 I became interested in human interaction with technology and nonlinear information. Much of my work that followed dealt with the internet and code. My investigations made me increasingly intrigued with the relationships between perception and coded language. I began to explore the organization and chaos of complex systems, including tax evasion, the metaverse, money laundering, sock puppets and astroturfing, identity theft, the singularity, and most recently waste, urbanism, pathogens and poisons. My interpretations of these kinds of information spaces are motivated by my daily visual intake and life experiences.

Infrastructures, global warming and climate change; identity, crime, consumerism, misinformation, semantics, sociology, pollution, overpopulation, and pandemics are some of the topics that drive my thinking and artistic work.

SOCIO-ECONOMIC INFLUENCE

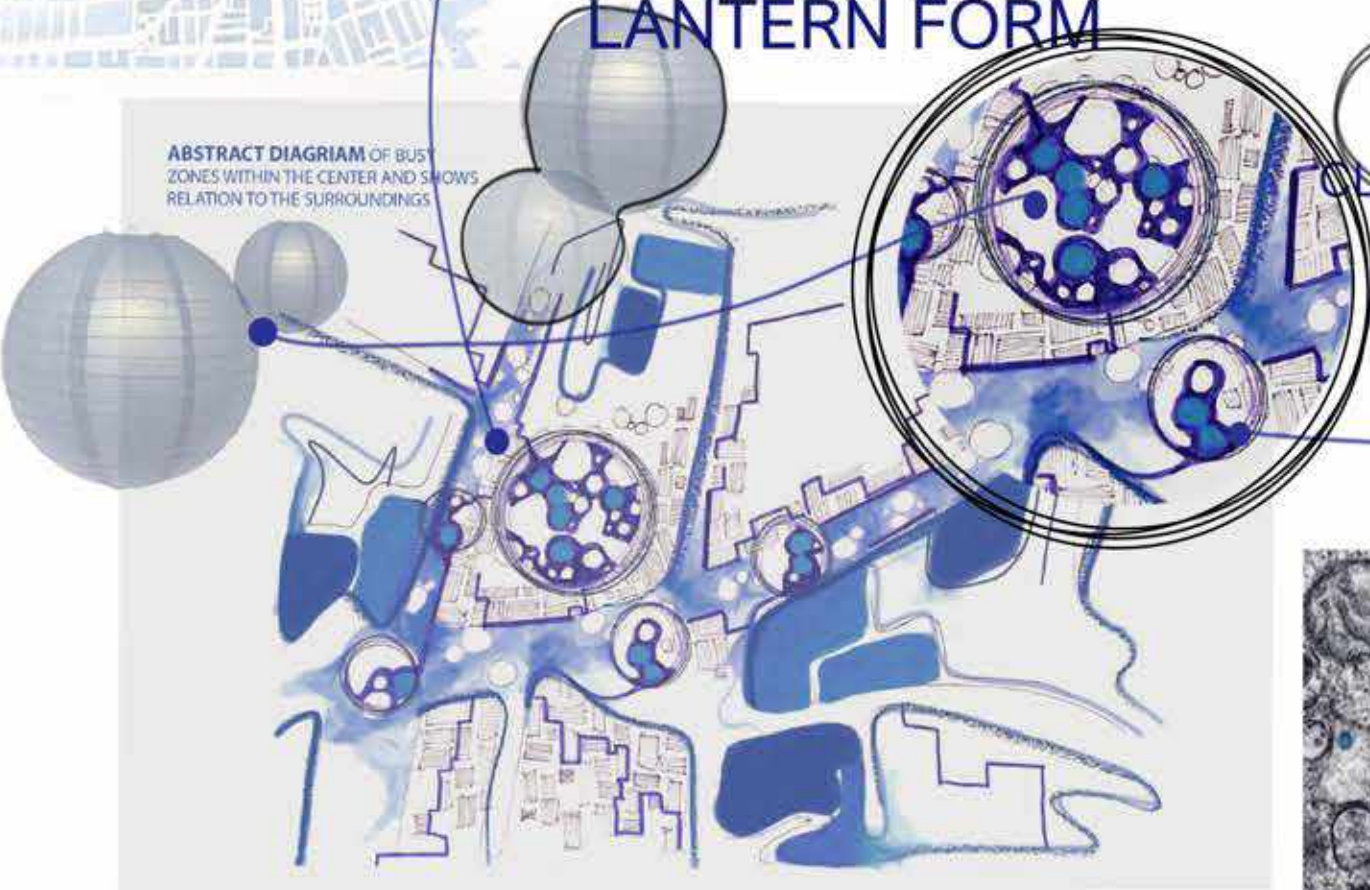
UNDER A MICROSCOPE COVID-19



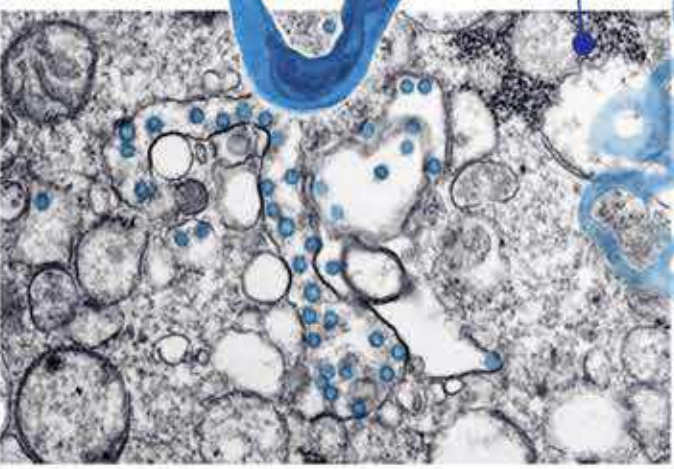
LANTERN FORM

CLUSTERS

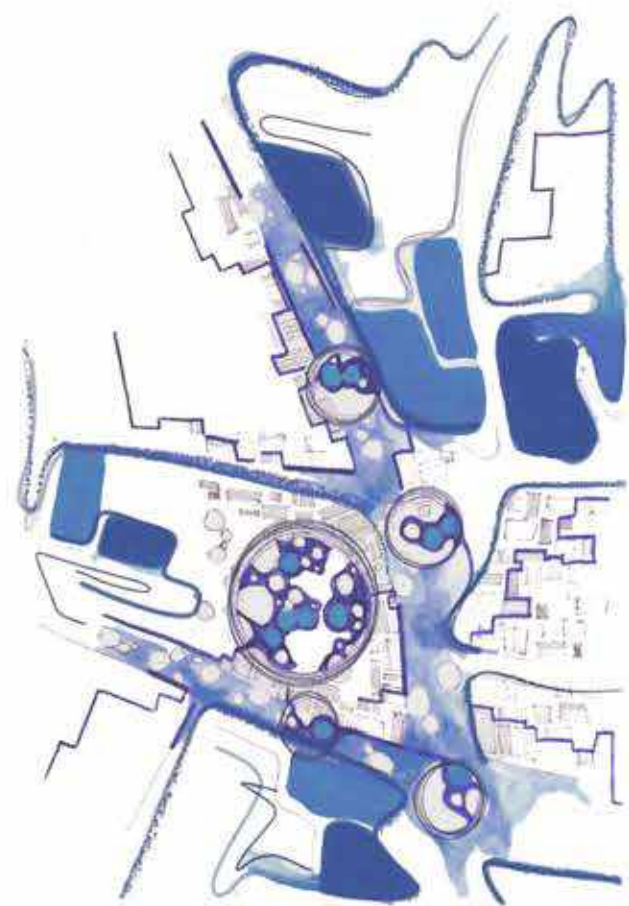
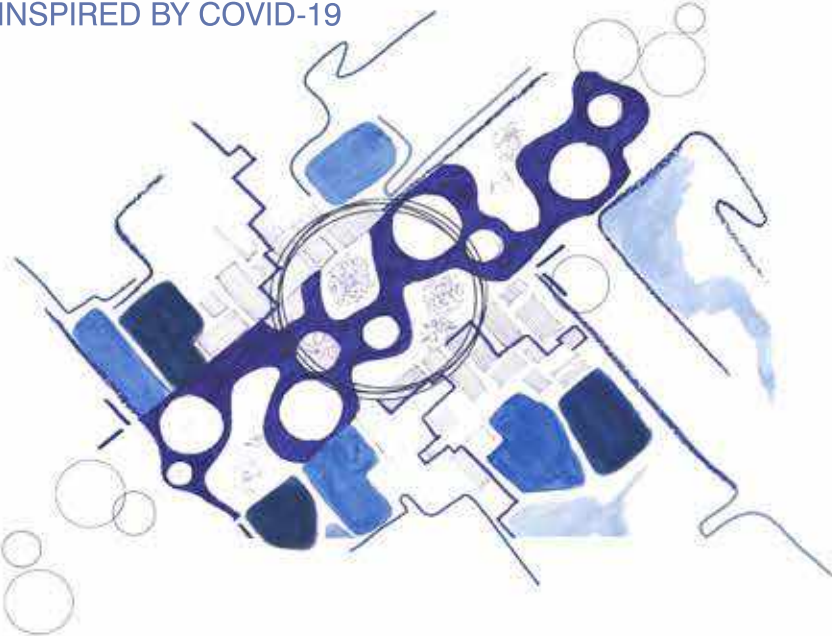
ABSTRACT DIAGRAM OF BUS ZONES WITHIN THE CENTER AND SHOWS RELATION TO THE SURROUNDINGS



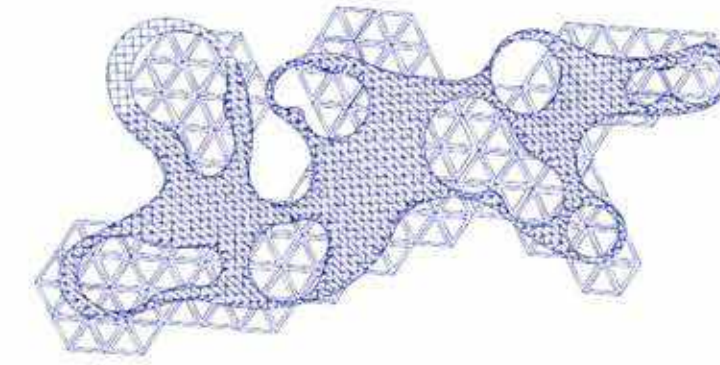
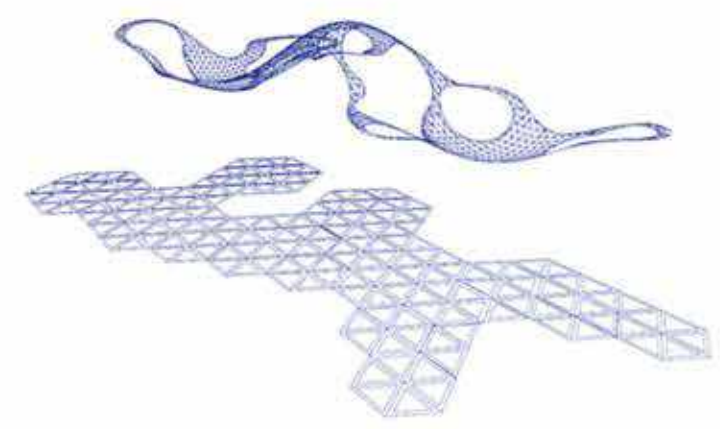
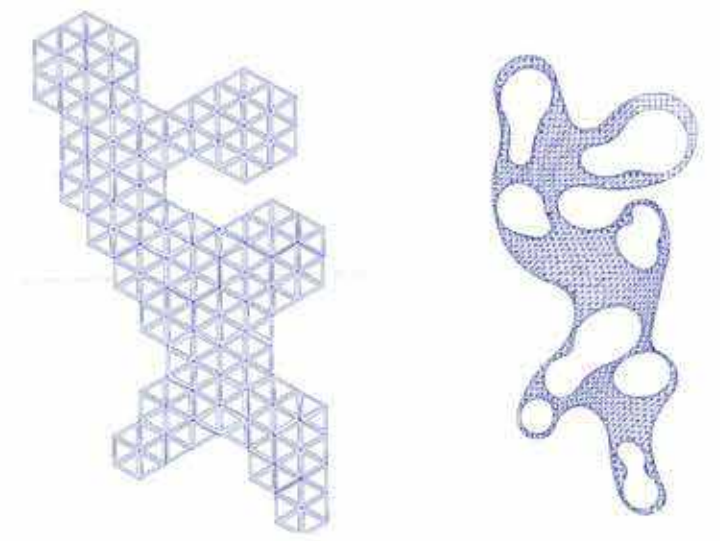
PATTERN & RHYTHMS



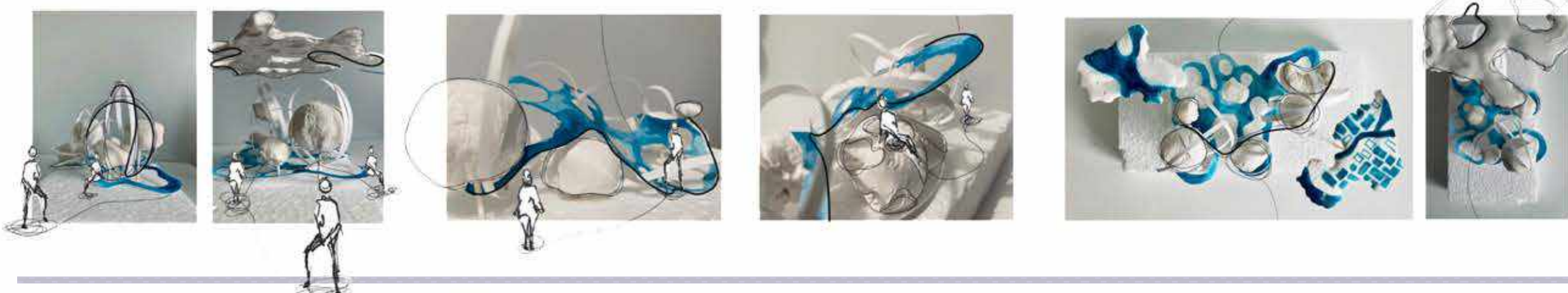
ABSTRACT URBAN DIAGRAMS INSPIRED BY COVID-19



CANOPY DEVELOPMENT



SKETCH MODELLING

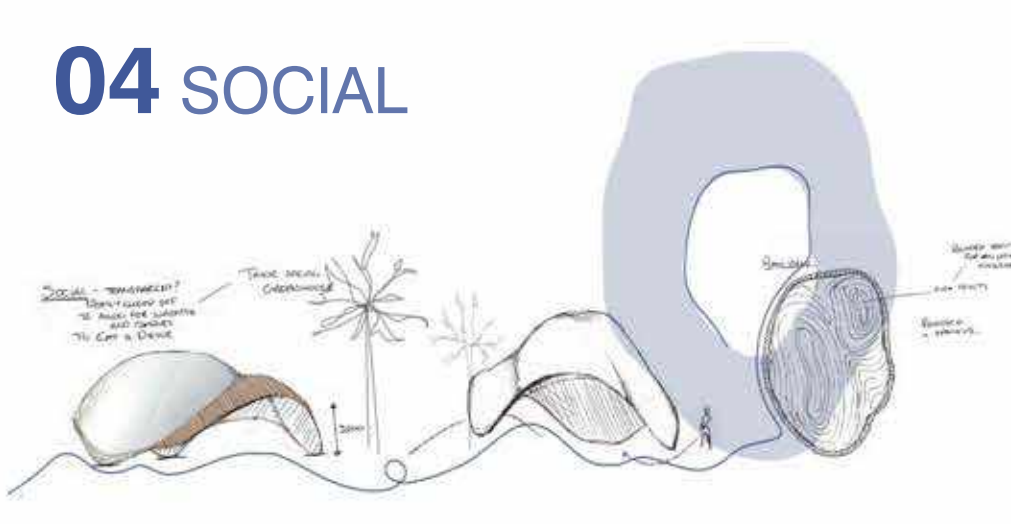
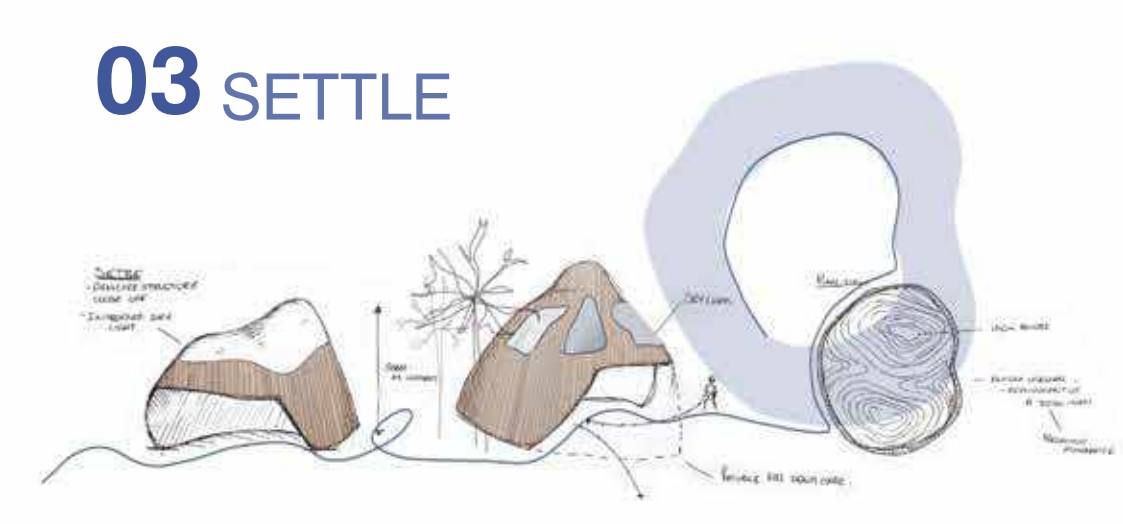
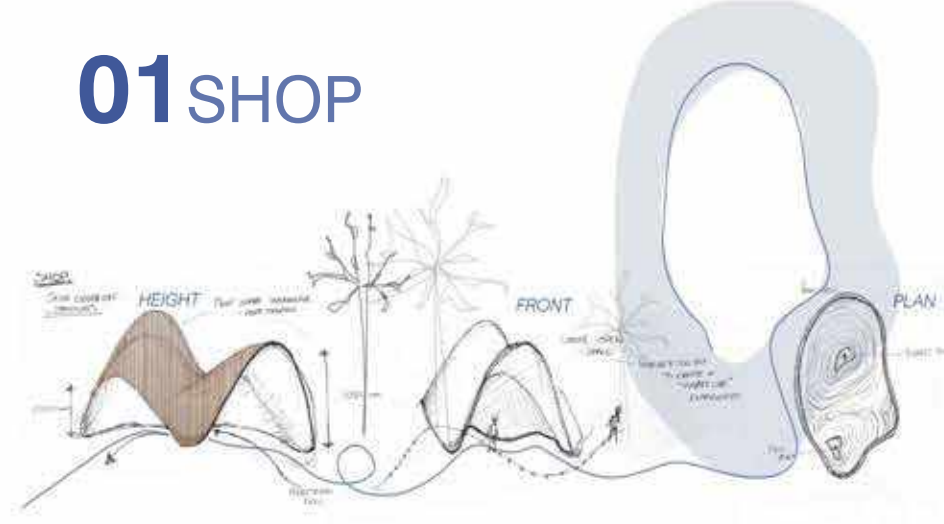


01 SHOP

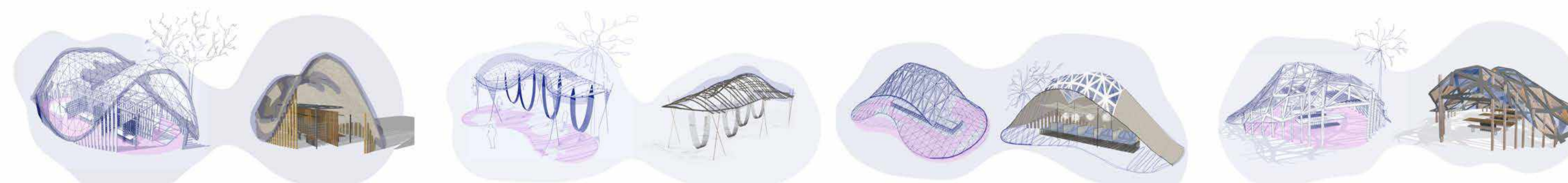
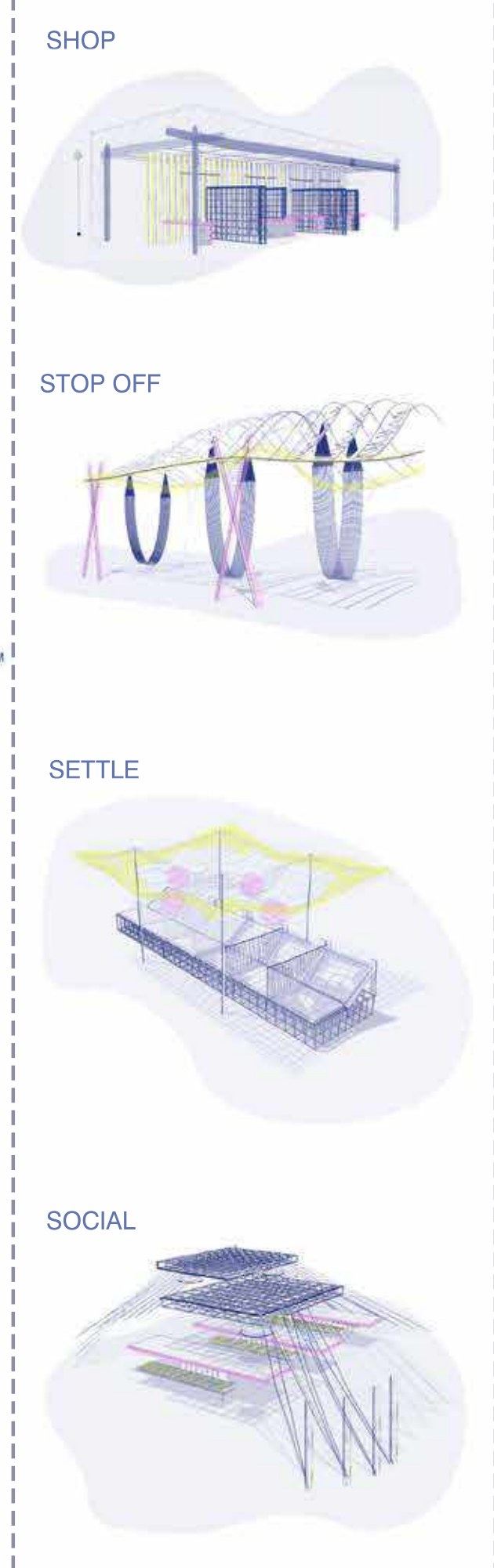
02 STOP OFF

03 SETTLE

04 SOCIAL



DESIGN PROPOSAL/DETAILS



01 SHOP

OUTER STRUCTURE IS COMPOSED OF AN ORGANIC BRICK STRUCTURE, WITH A STEEL METAL FRAME BASE. WOODEN PILLARS ARE USED AROUND THE BASE OF THE STRUCTURE TO ADD LIGHTNESS AND WEIGHTLESSNESS. THE INTERIOR IS MAINLY COMPOSED OF TIMBER PILLARS AND COUNTERTOPS ALONG WITH METAL FRAMEWORK

02 STOP OFF

THE MATERIALITY APPROACH FOR THE STOP OFF STRUCTURE IS IN KEEPING WITH THE OTHERS TO CREATE A CONTINUITY WITHIN THE DESIGN. THE CANOPY ELEMENT IS MADE OF CURVED STEEL RODS (POSSIBLY RECLAIMED IF RESOURCES ARE AVAILABLE). THIS CANOPY LIES ON TOP OF ANGULAR TIMBER SUPPORTS WHICH HAVE A CROSSOVER ROPE DETAIL TO ADD DEPTH AND PATTERN.

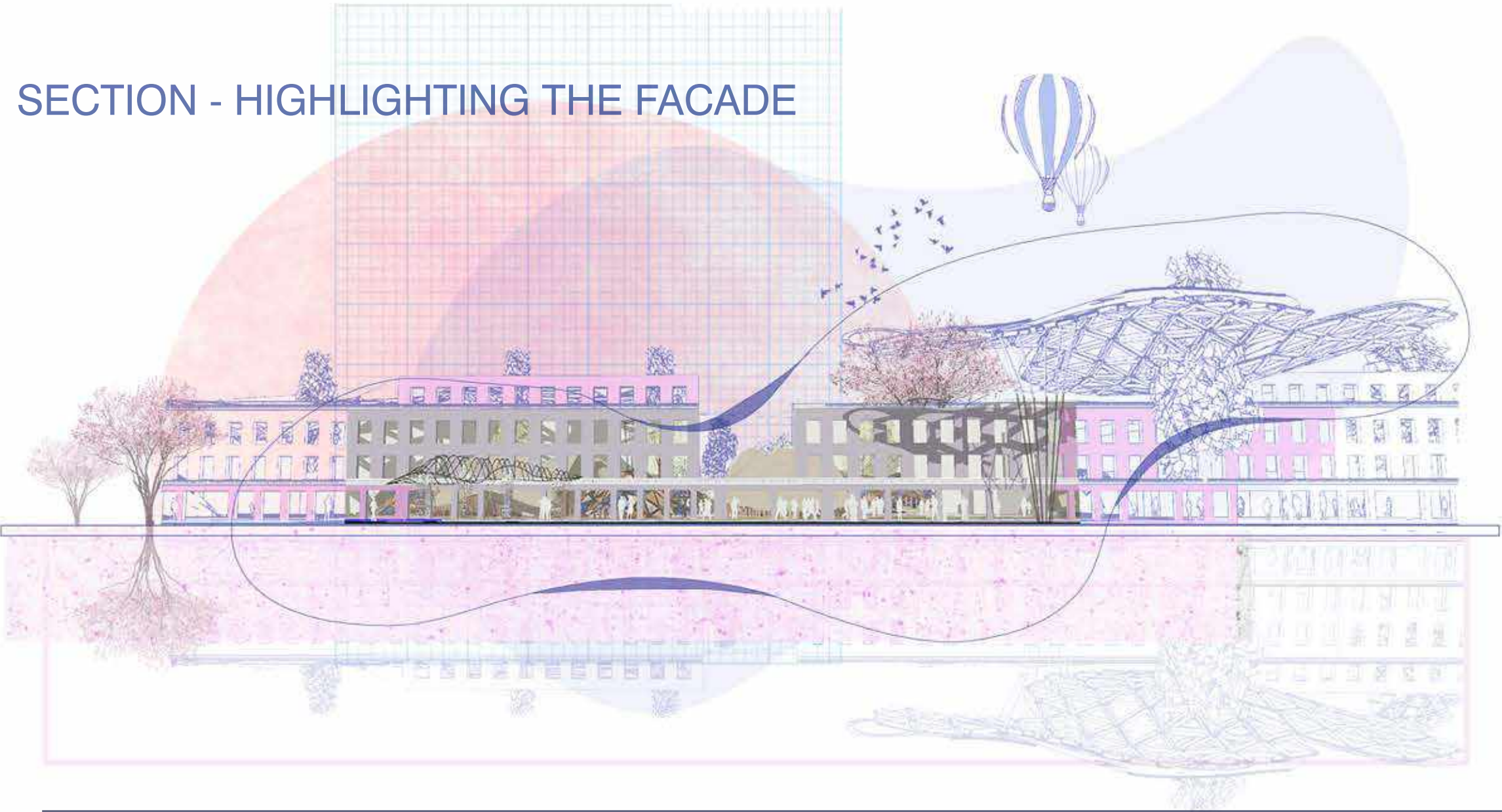
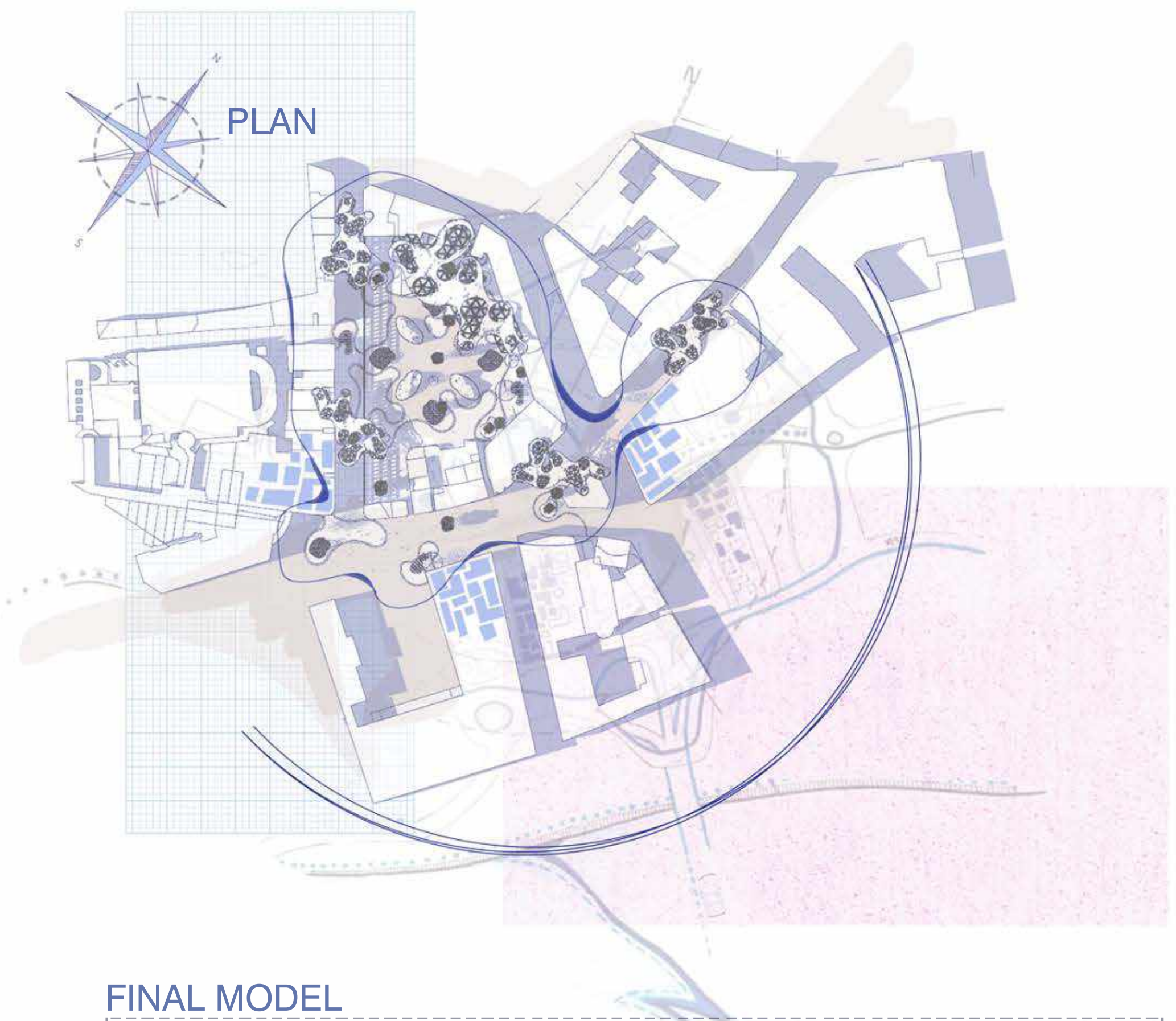
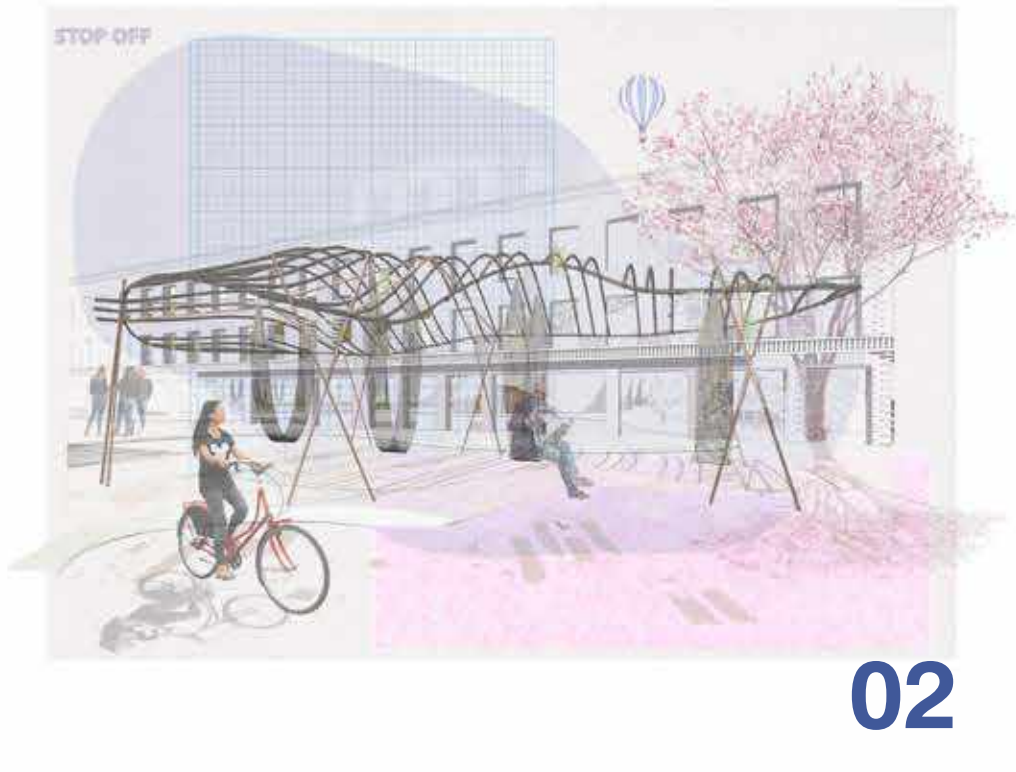
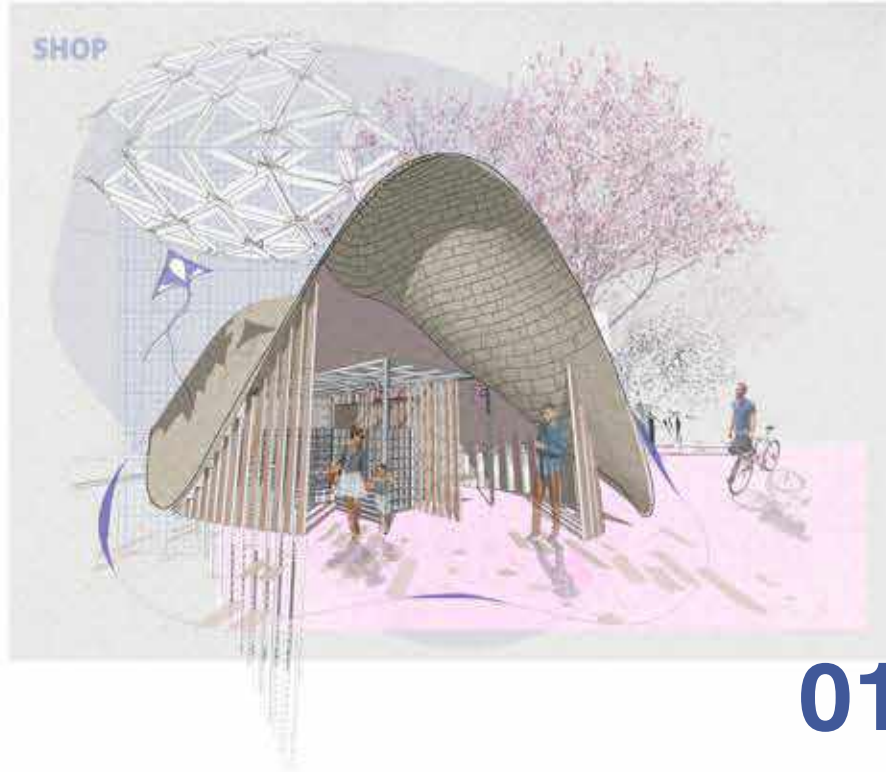
03 SETTLE

THE SETTLE STRUCTURE IS MADE MOSTLY OUT OF BRICK TO PROVIDE MAXIMUM PRIVACY AND SECURITY; HOWEVER THE SPACE IS STILL BRIGHT DUE TO A LARGE SKYLIGHT WHICH COVER THE MAJORITY OF THE TOP PORTION OF THE STRUCTURE. THIS IS ALSO VITAL FOR CREATING SHADOWS WITH THE NETTING. TIMBER PILLARS ARE USED TOWARD THE REAR OF THE STRUCTURE TO REPEAT THE LINEAR RHYTHM.

04 SOCIAL

THE IMAGE ABOVE SHOWS HOW METAL, TIMBER CLADDING AND GLASS HAVE BEEN USED TO CREATE THE OUTER SHELL. THE CLADDING PROVIDES SHADE AND PRIVACY WHILST THE GLASS ENSURES A LARGE AMOUNT OF LIGHT STILL SHINES INTO THE STRUCTURE KEEPING IT BRIGHT AND AIRY. TIMBER BEAMS AROUND THE FRONT OF THE STRUCTURE CREATE SUPPORT WHILST EMPHASISING THE LINEAR RHYTHM.

FINAL OUTCOME - VISUALS



FINAL MODEL

