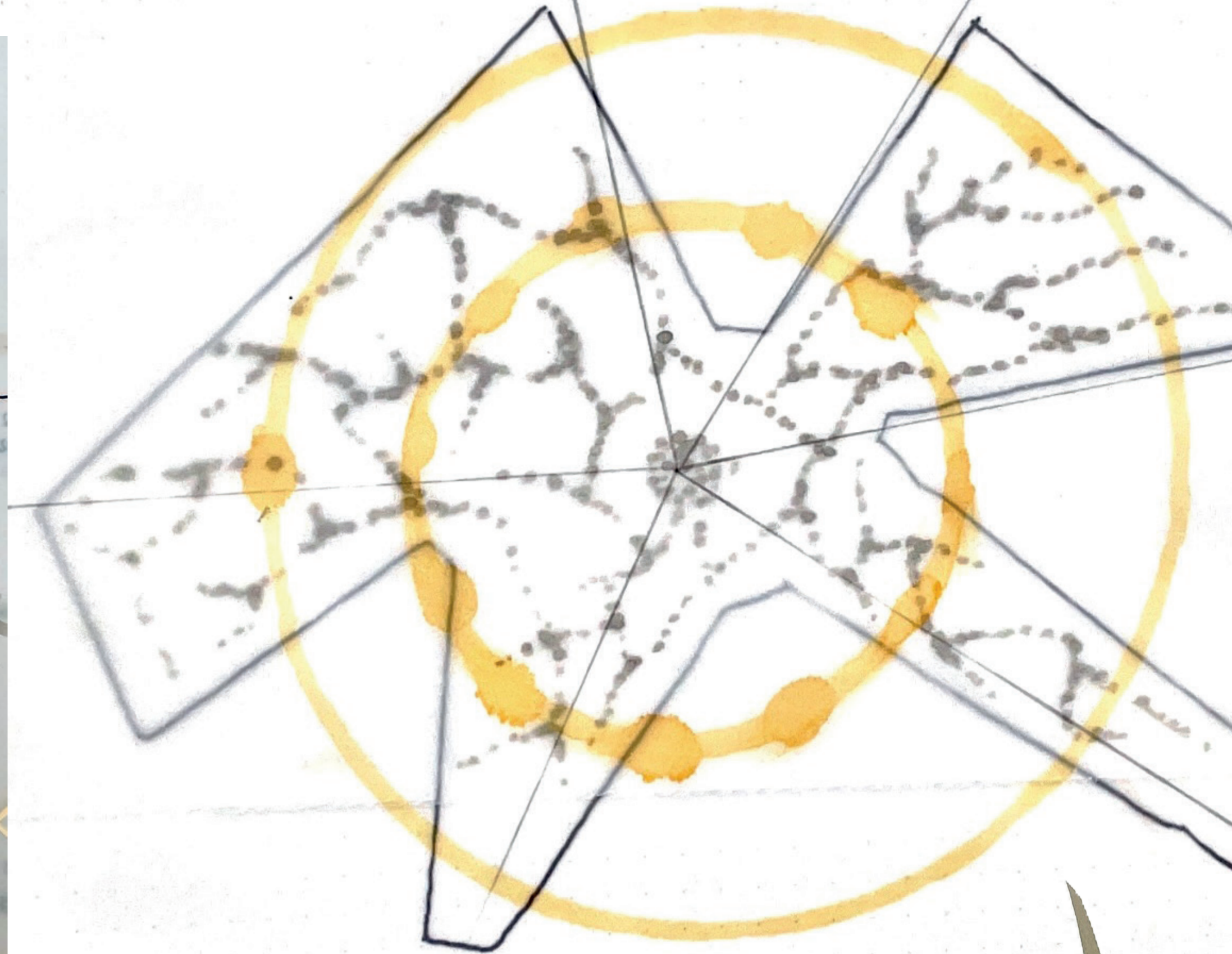
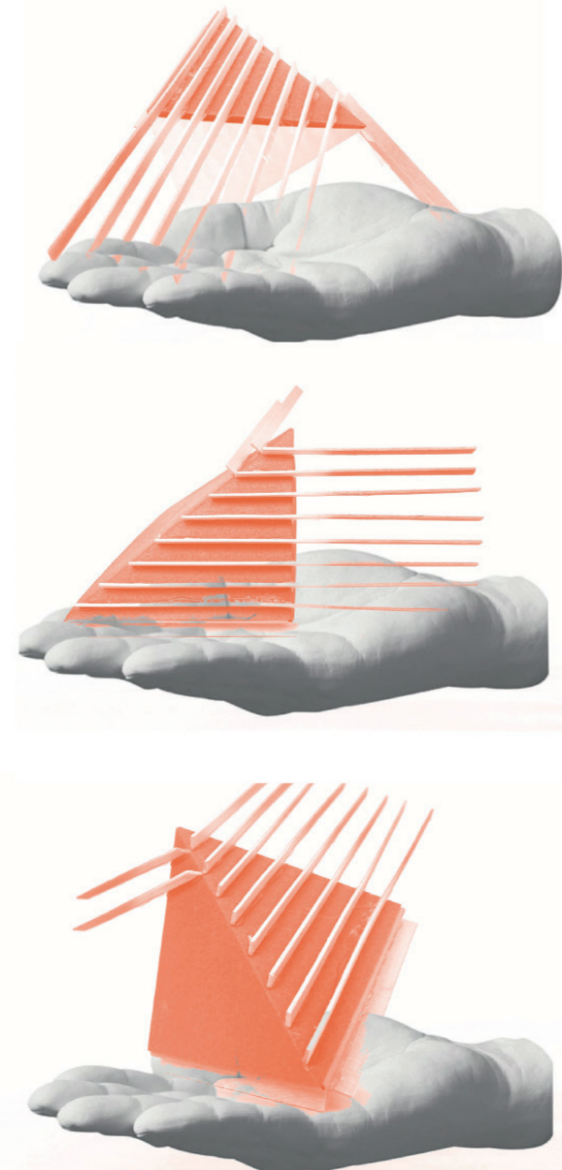


# ISLE OF ALUCINARI

A medicinal psilocybin retreat, offering guided psychedelic experiences in the aid of mental health. Situated on the tidal island of Lindisfarne, Northumberland.



# EXPLORATION

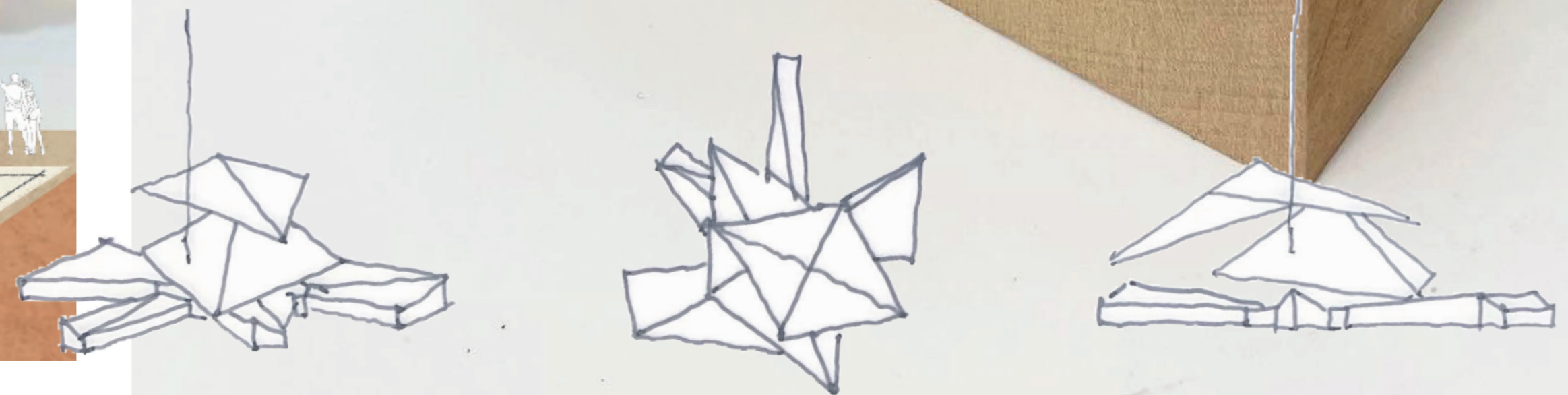
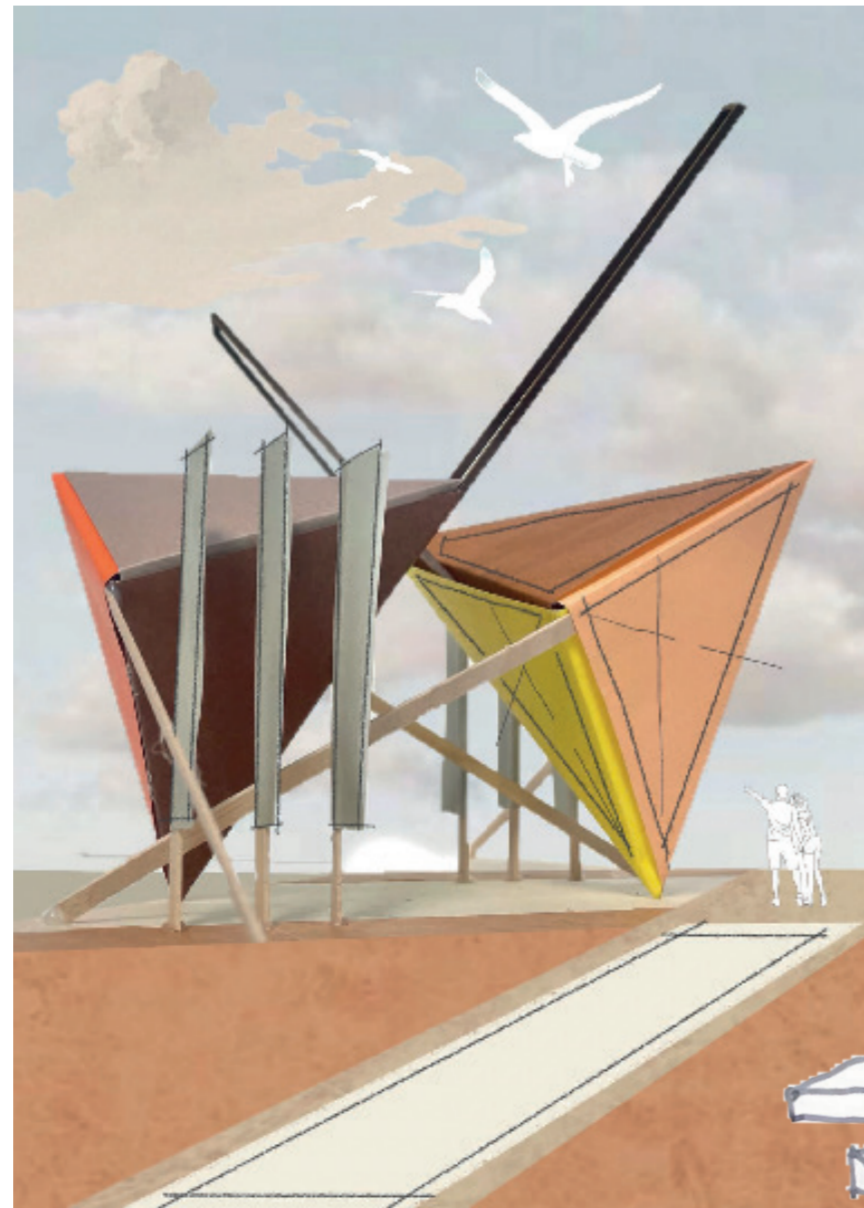
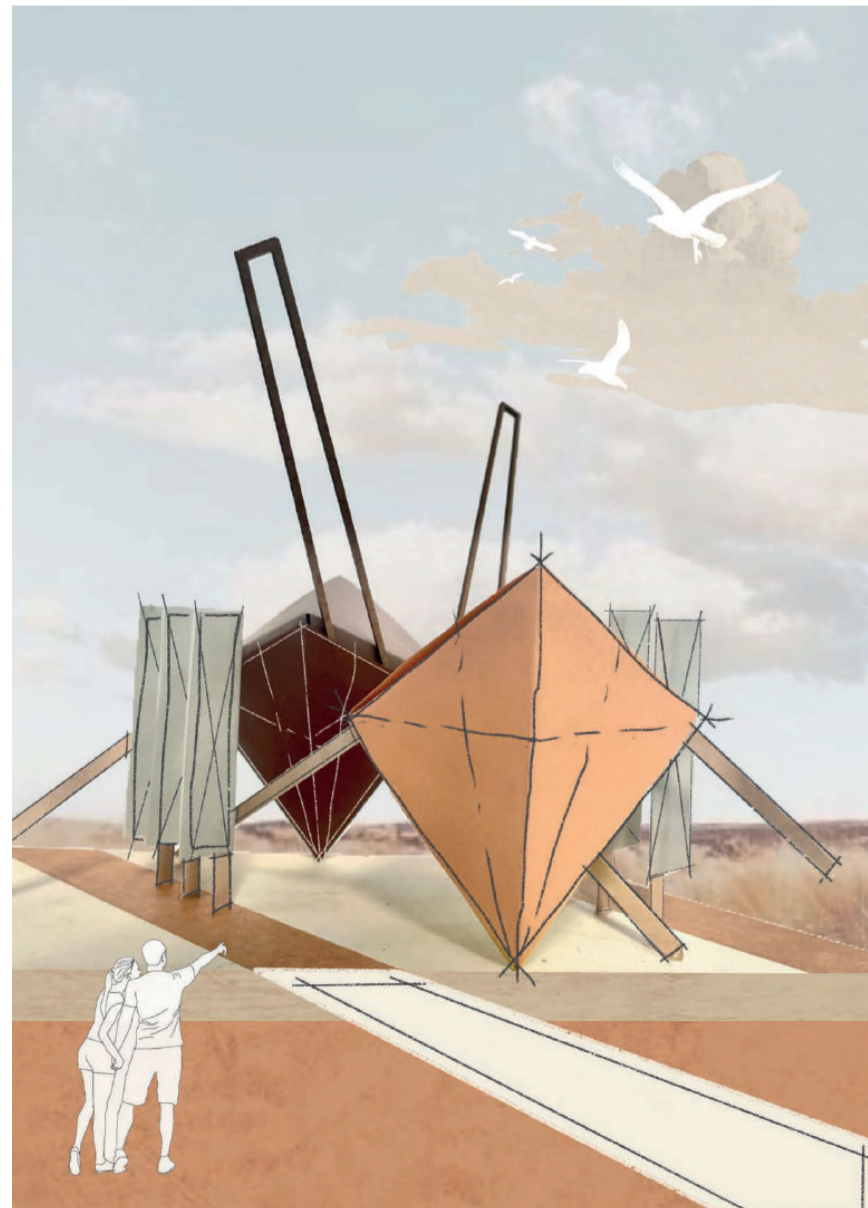
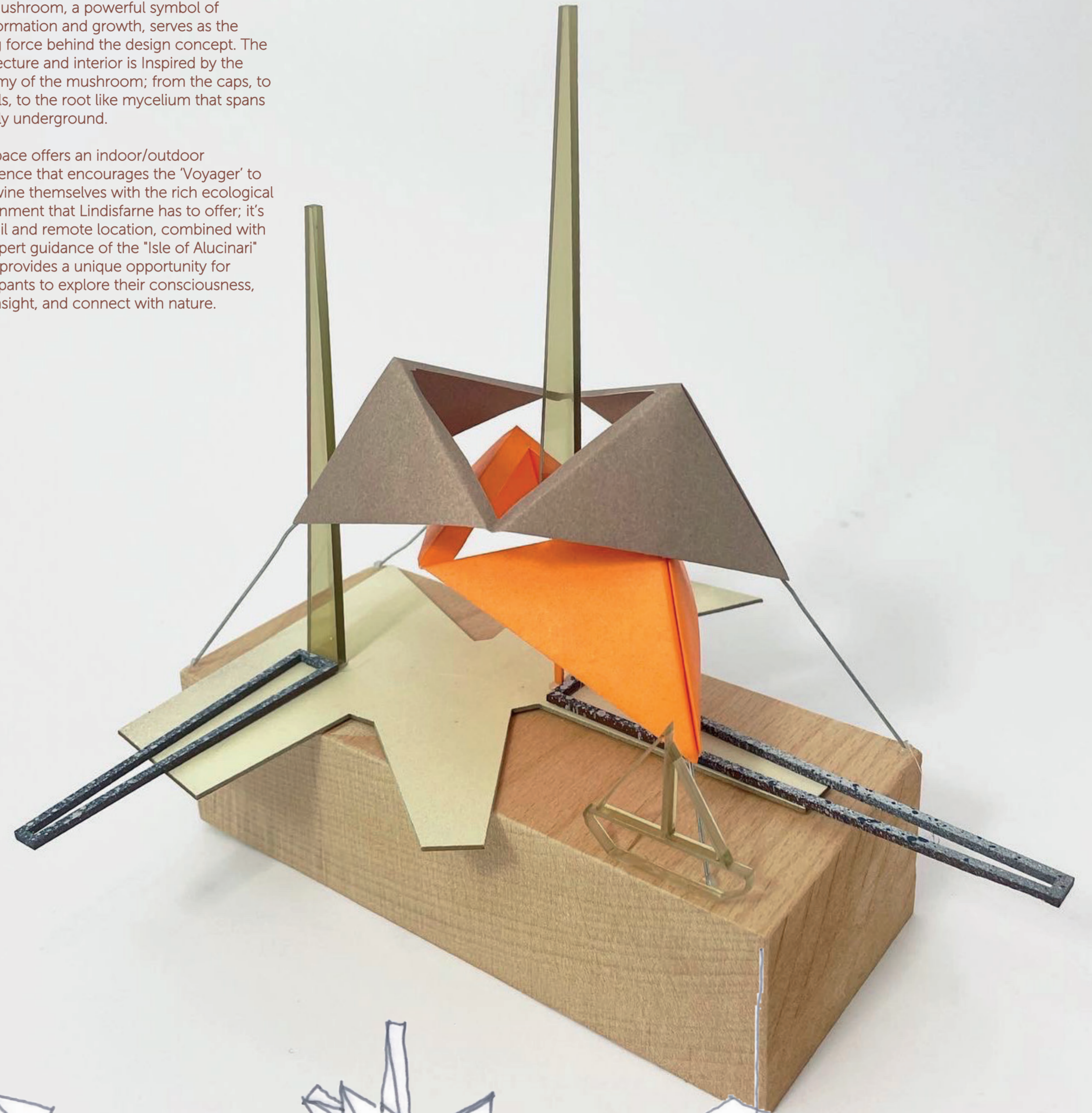
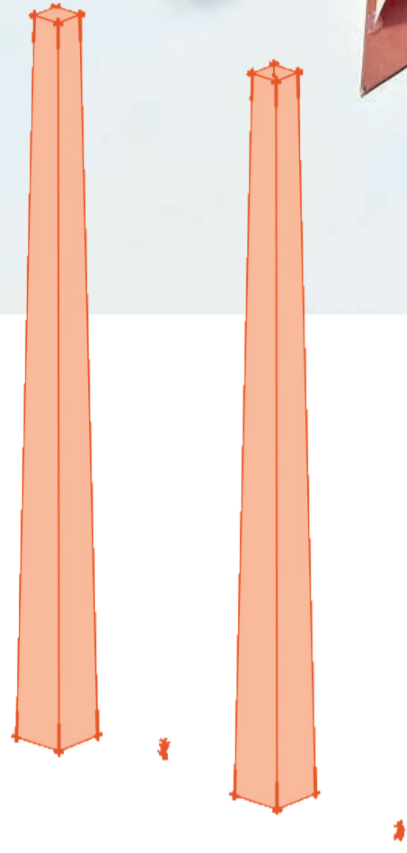
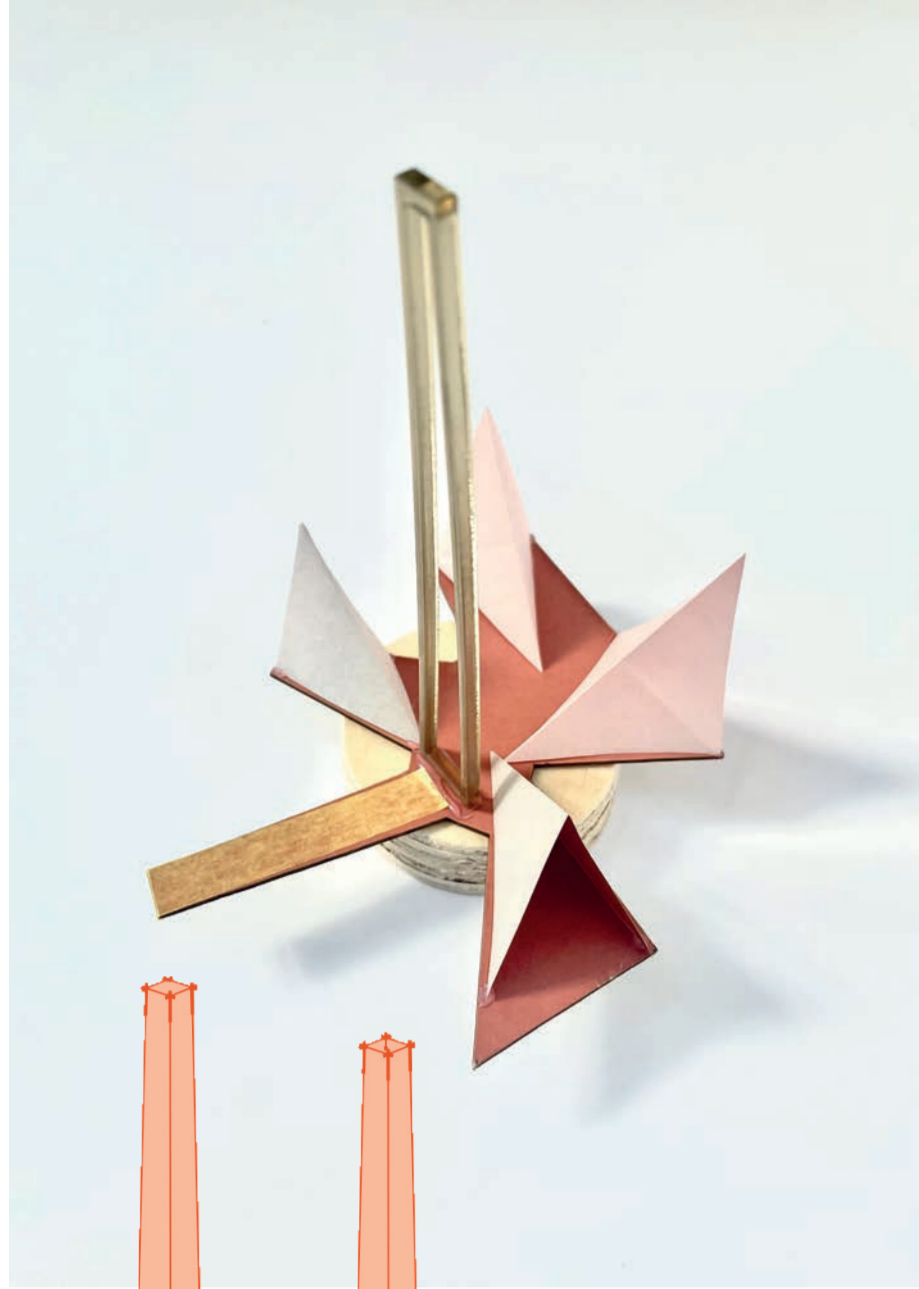
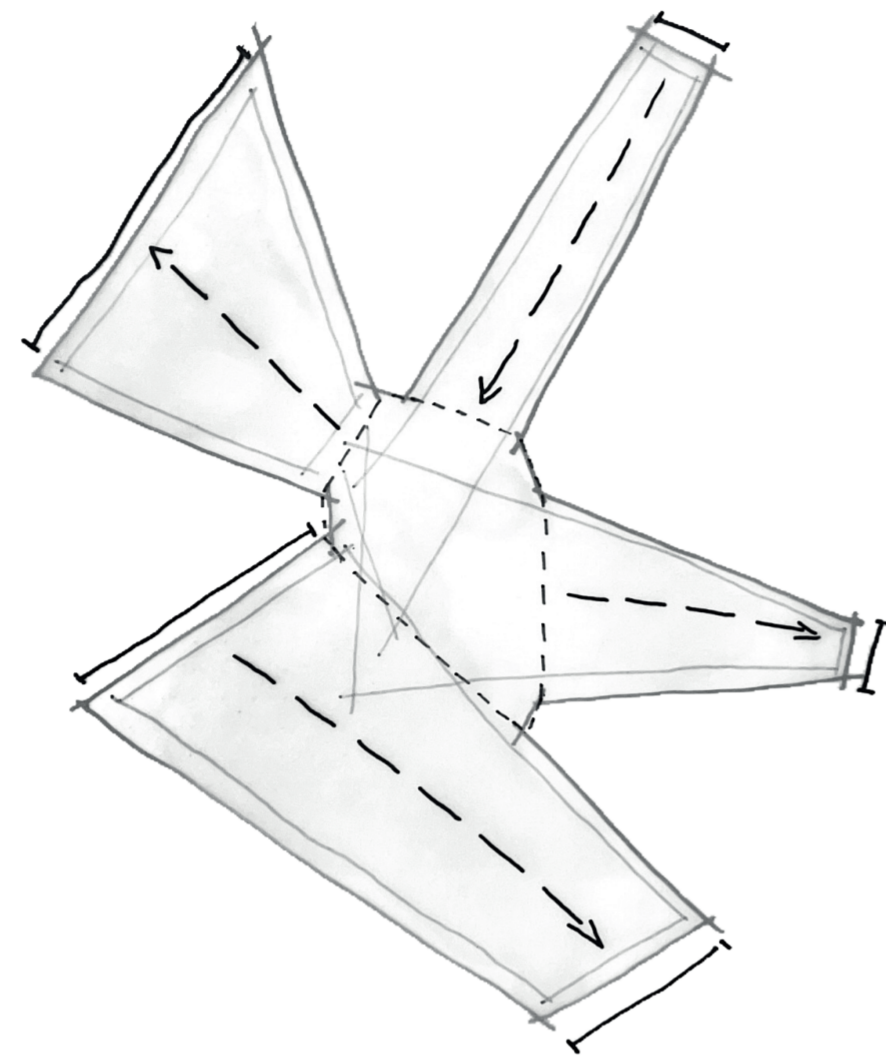
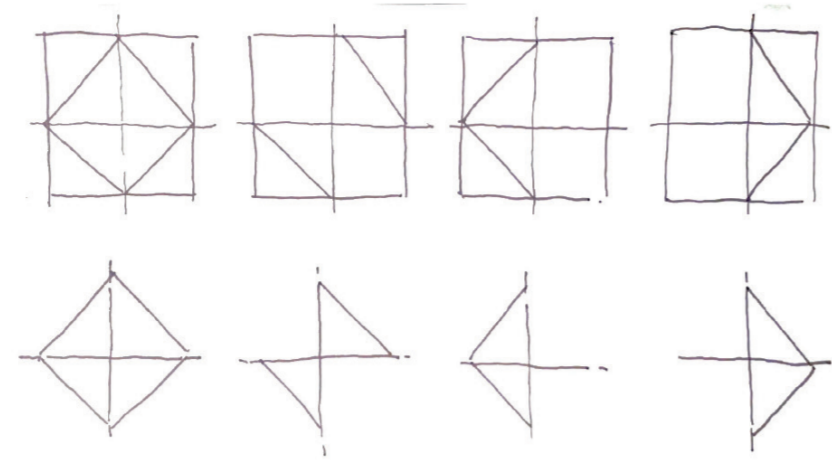


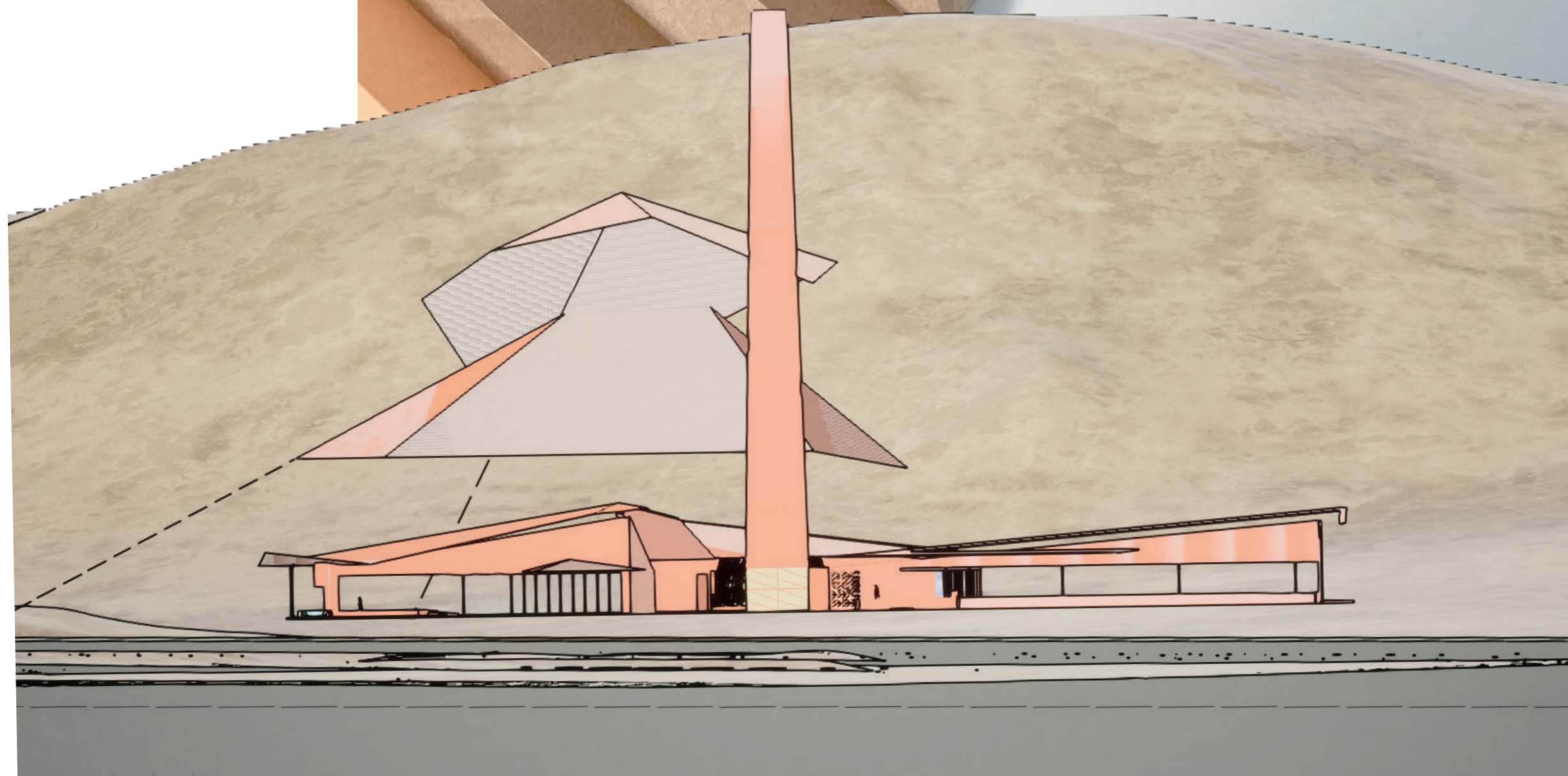
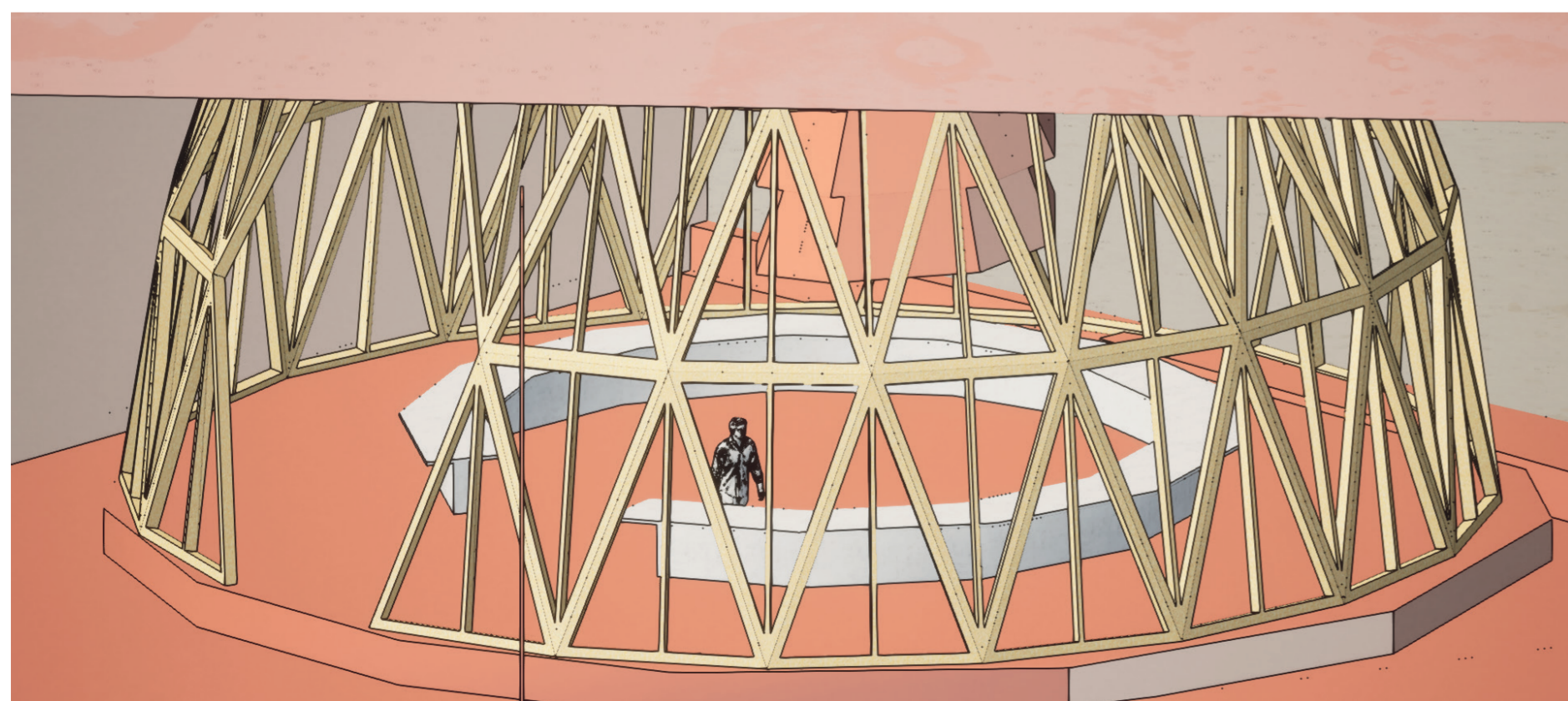
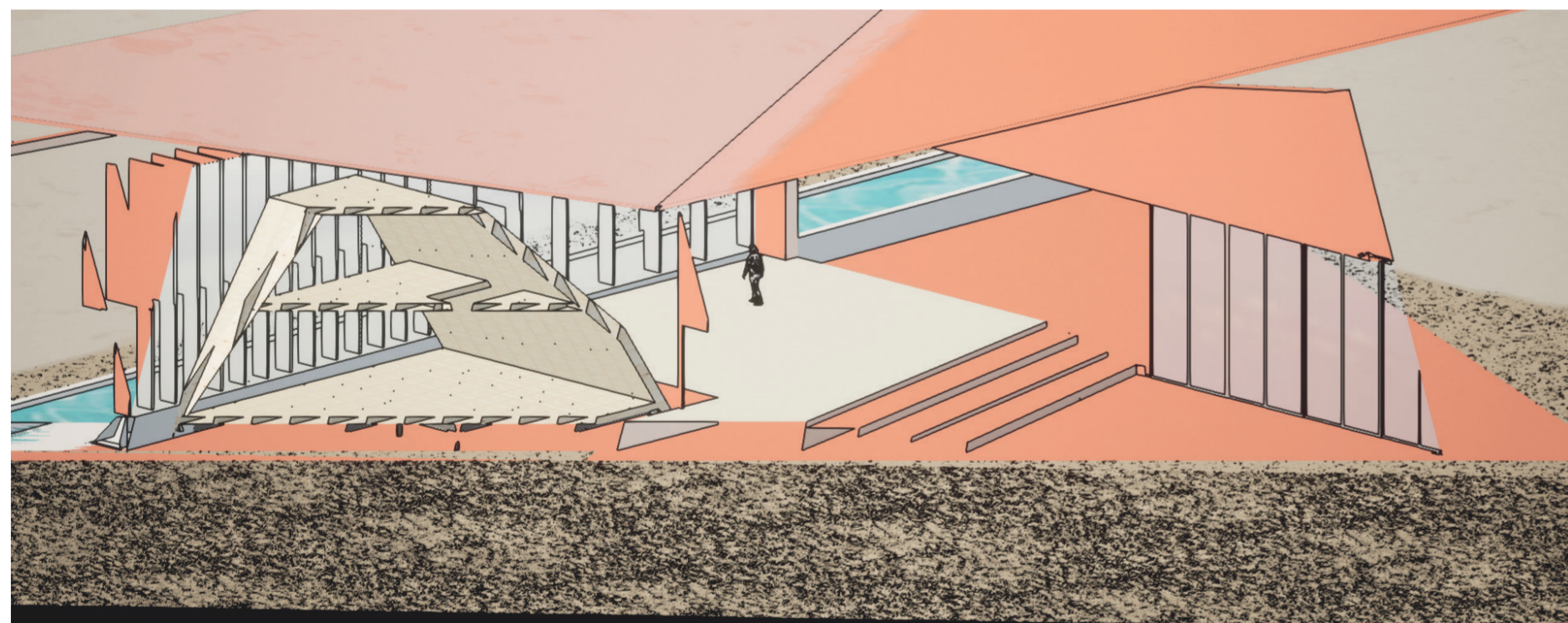
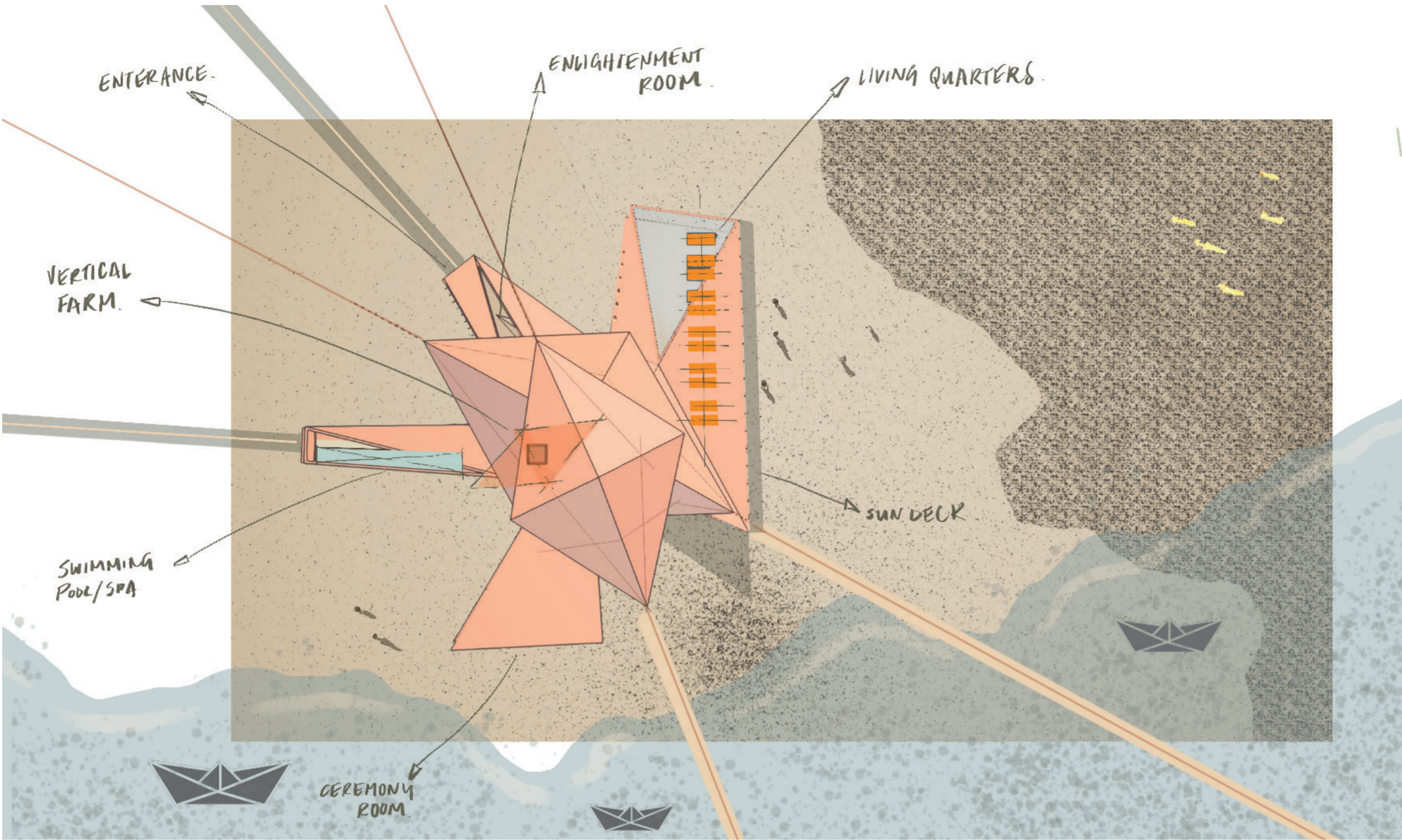
# DEVELOPMENT

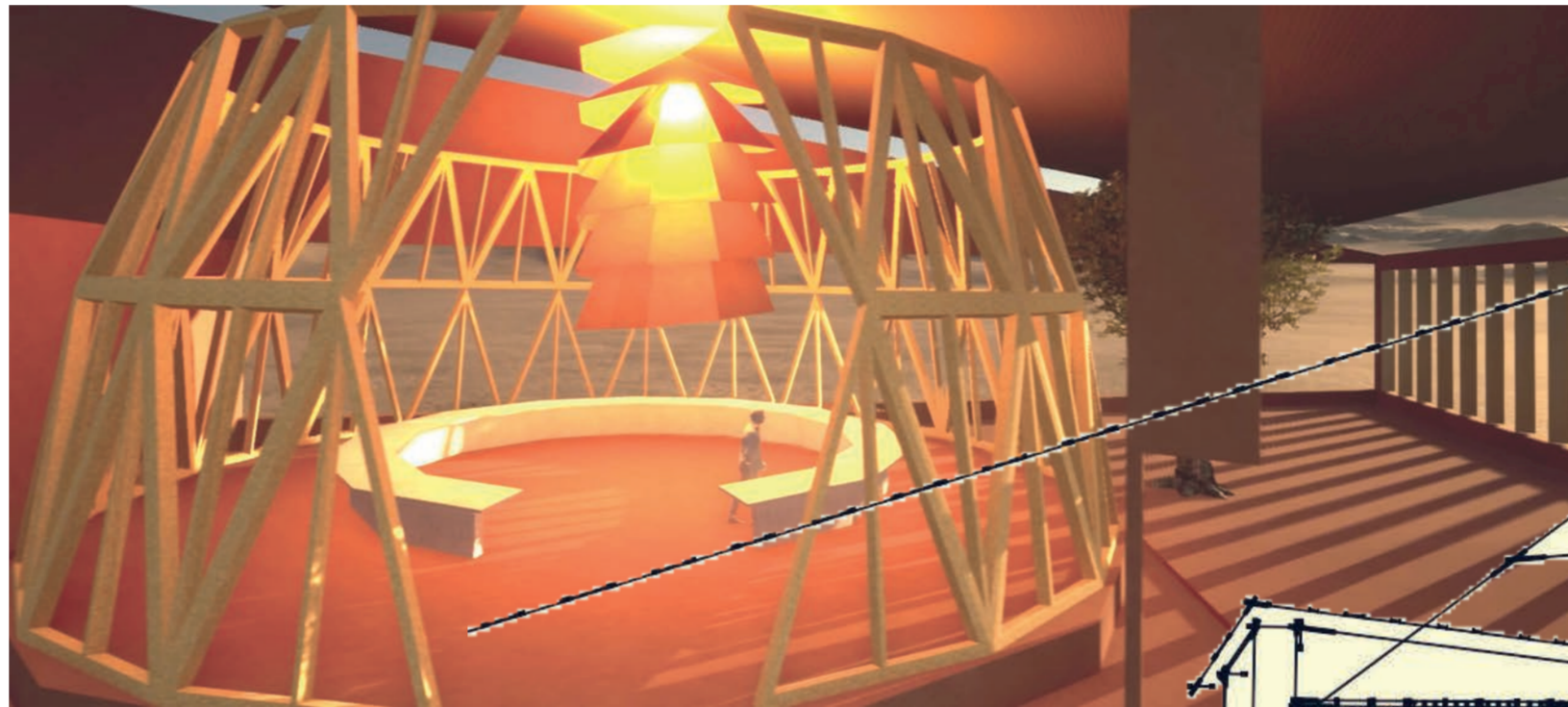
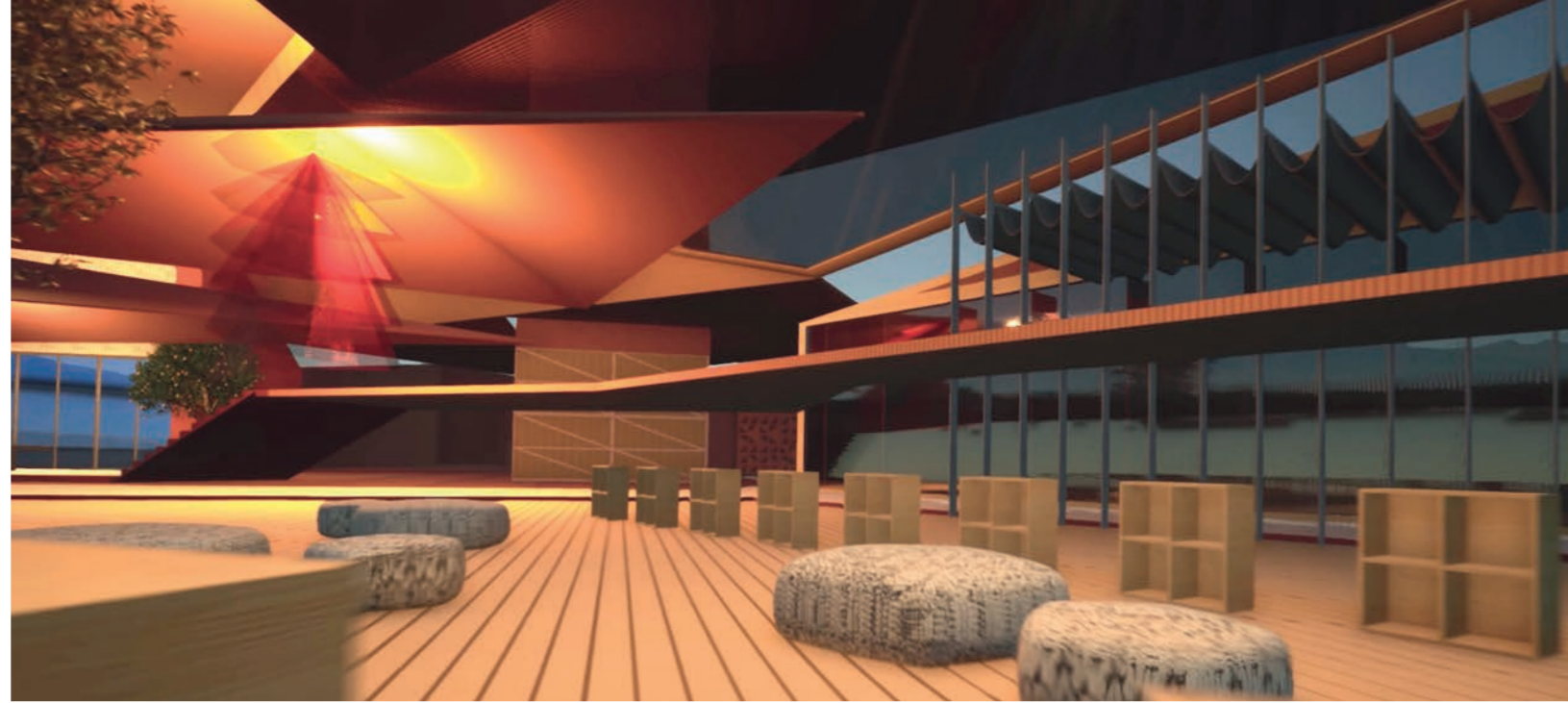
Based on the tidal island of Lindisfarne in Northumberland, Isle of Alucinari is a 'design for the future concept' that manifests as a medicinal psilocybin (magic mushroom) retreat. Alucinari offers guided psychedelic therapy in a space that considers set and setting while providing a space for the voyager to explore their consciousness safely, under the supervision of medical professionals and psychedelic specialists.

The mushroom, a powerful symbol of transformation and growth, serves as the driving force behind the design concept. The architecture and interior is inspired by the anatomy of the mushroom; from the caps, to the gills, to the root like mycelium that spans invisibly underground.

The space offers an indoor/outdoor experience that encourages the 'Voyager' to intertwine themselves with the rich ecological environment that Lindisfarne has to offer; it's tranquil and remote location, combined with the expert guidance of the "Isle of Alucinari" team, provides a unique opportunity for participants to explore their consciousness, gain insight, and connect with nature.







# OUTCOME

