

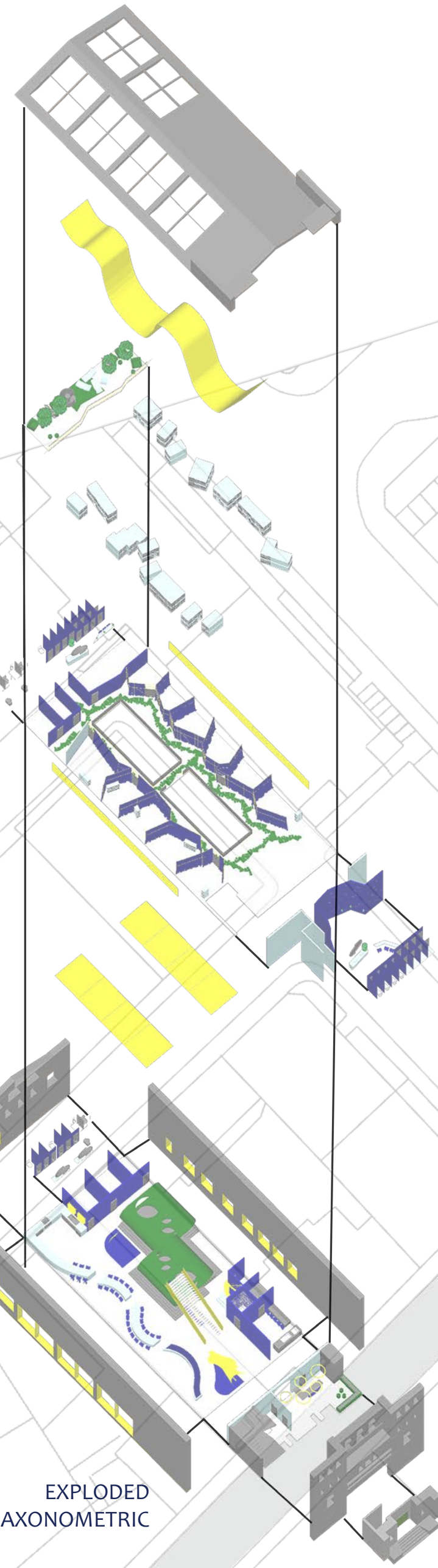
# HOSTEL AZURE

## A CONTEMPORARY HOSTEL IN THE HEART OF DUNDEE, OFFERING A SPACE FOR SOCIAL TRAVELLERS

AS AN EMERGING TOURIST DESTINATION, THE CITY OF DUNDEE IS MISSING A VIBRANT HOSTEL TO EXCITE AND WELCOME VISITORS. AS AN ADAPTIVE REUSE PROJECT, HOSTEL AZURE TRANSFORMS THE ABANDONED SITE OF FORESTER’S HALL FOR A NEW FUTURE USE. WITHIN DUNDEE’S CENTRE, HOSTEL AZURE IS IDEALLY LOCATED FOR TOURISTS WANTING TO EXPLORE THE CITY AND IS CLOSE TO TRANSPORT LINKS.

AS SOCIALISATION CAN BE CONSIDERED THE KEY ASPECT WHICH DIFFERENTIATES HOSTELS FROM OTHER ACCOMMODATION TYPES, THIS CONCEPT HAS BEEN HEAVILY CONSIDERED TO FOSTER A SENSE OF OPEN COMMUNITY WITHIN THE HOSTEL.

REFERENCING JOURNEYS AND EXPLORATION, THE INSPIRATION FOR THE HOSTEL’S DESIGN IS INFORMED BY THE BODY PARTS, LIFE CYCLE, COLOURS, FLIGHT, BEHAVIOUR AND PATTERNS OF DRAGONFLIES. VARIED DRAGONFLY ELEMENTS HAVE BEEN USED AS DESIGN DRIVERS WITHIN EACH DIFFERENT HOSTEL AREA. THIS ENSURES DIFFERENTIATION AND DISCOVERY, YET A COHESIVE OUTCOME FOR A CONTEMPORARY HOSTEL WHICH IS MUCH NEEDED WITHIN DUNDEE.



EXPLODED AXONOMETRIC



**SITE ANALYSIS**

DESIGNED BY DAVID BAXTER AND BUILT IN 1901, FORESTER’S HALL, LOCATED AT 6 NICOLL STREET, IS AN ART NOUVEAU STYLE, CATEGORY B LISTED BUILDING. THE STRIKING FAÇADE FEATURES INTRICATE DECORATIVE STONEMWORK, WHILE THE LARGE OPEN INTERIOR FEATURES EXPOSED BRICK WALLS AND HIGH CEILINGS.

THE SITE BECAME DUNDEE’S FIRST REPERTORY THEATRE IN 1939, BEFORE A SERIOUS FIRE CLOSED THE THEATRE IN 1963 AND NOW THE SITE REMAINS VACANT.

LOCATED WITHIN DUNDEE CITY CENTRE, IT IS IDEALLY SITUATED FOR TOURISTS TO EXPLORE THE KEY AREAS OF DUNDEE.

CONTEXT	£290 MILLION	27%	500,000
	CONTRIBUTED BY OVERNIGHT TOURISM TO THE DUNDEE ECONOMY IN 2023	RISE IN PEOPLE STAYING OVERNIGHT IN DUNDEE BETWEEN 2019 AND 2023	VISITORS EXPECTED YEARLY BY THE EDEN PROJECT, DUE TO OPEN IN 2030

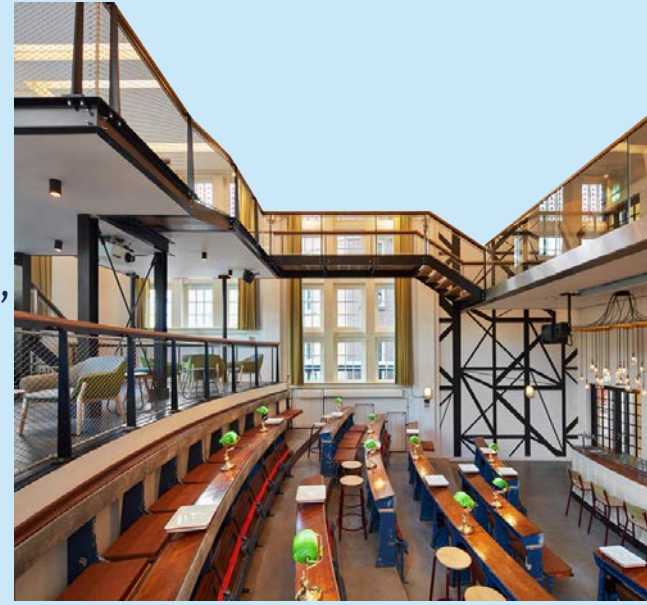


# CASE STUDIES



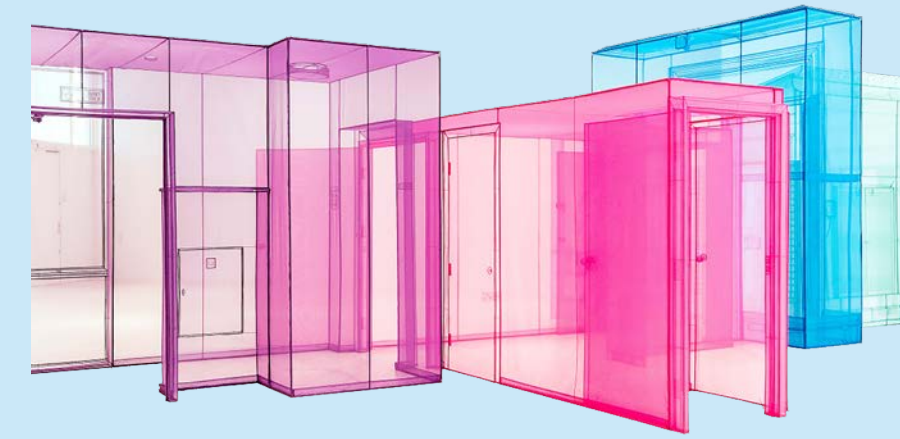
THE POD SUITE HOSTEL  
BLASCO, VALENCIA

PRIMARY RESEARCH  
EXPLORING POD STYLE  
SLEEPING, SIMPLE YET  
SURPRISINGLY SPACIOUS,  
PRIVATE AND  
COMMUNAL AREAS,  
BALANCED EXPERIENCE



GENERATOR HOSTELS

EXPLORING WHAT  
MAKES A HOSTEL  
POPULAR, EUROPE'S  
FASTEST GROWING  
BOUTIQUE  
ACCOMODATION  
BRAND



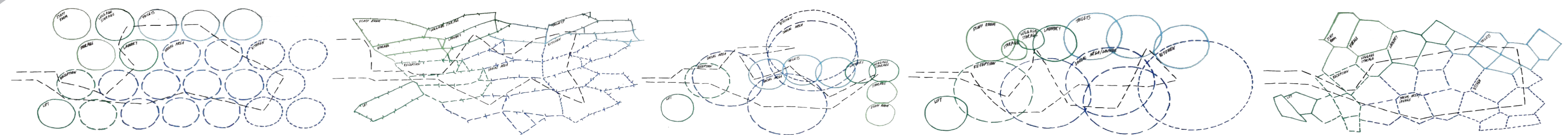
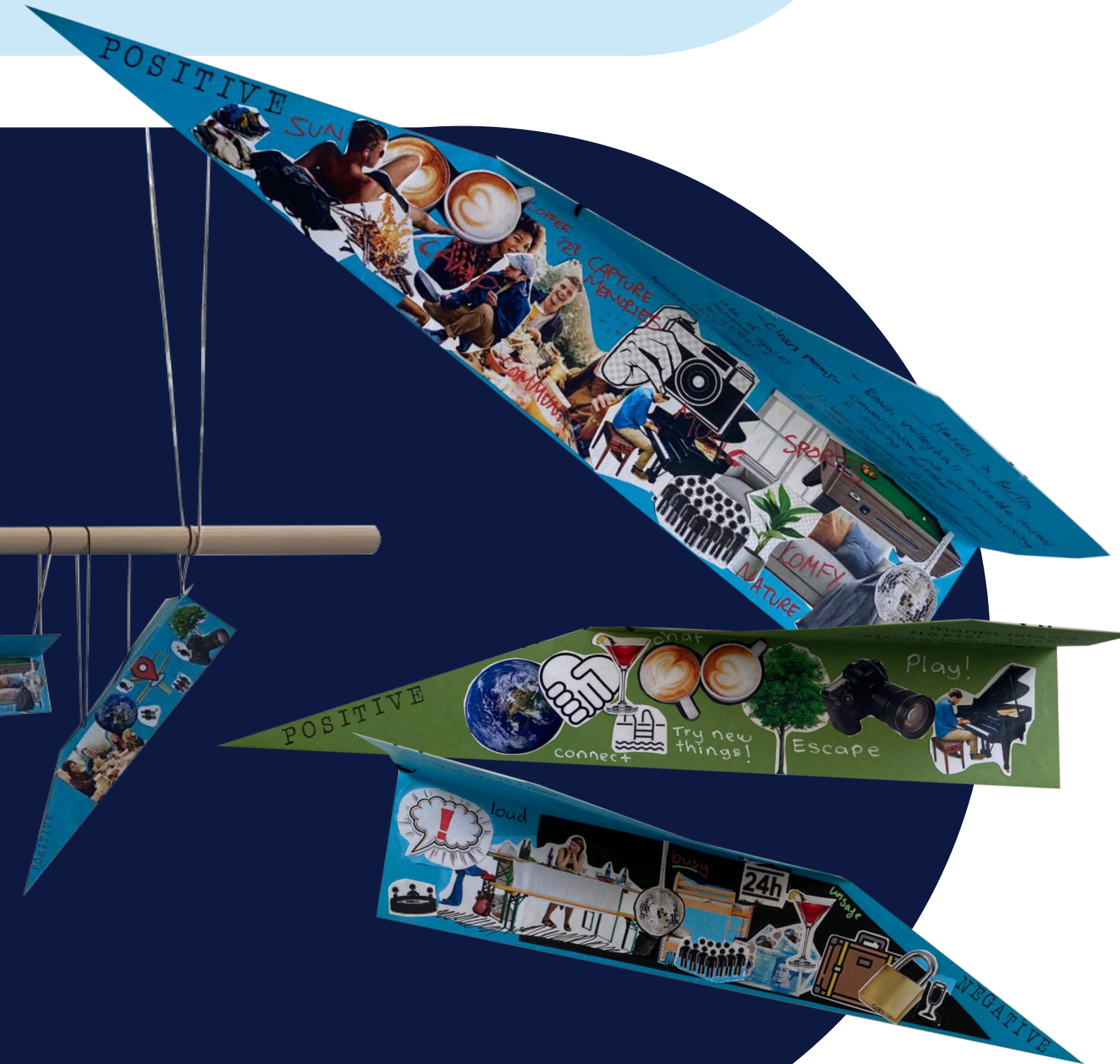
HUBS, DO HO SUH

CONSIDERATION OF  
OPEN LAYOUT WITH  
CONTEMPORARY  
DIVIDERS, WEIGHTLESS  
YET STILL CREATES  
CLEAR SEPERATIONS,  
COEXISTANCE OF  
PRIVACY AND  
OPENNESS

## ENGAGEMENT TOOL



TO OBTAIN CONTRIBUTIONS FROM POTENTIAL USERS, AN ENGAGEMENT TOOL WAS DEVELOPED IN THE FORM OF COLLAGED PAPER AIRPLANES, RELATING TO TRAVEL METAPHORS AND DRAGONFLY FLIGHT. THIS REVEALED THAT 50% OF PEOPLE CONSIDERED SOCIAL ELEMENTS TO BE THE MOST IMPORTANT ASPECT OF A HOSTEL EXPERIENCE AND ADDITIONALLY 87.5% OF PEOPLE DISCUSSED SOCIALISING WHEN REFERRING TO POSITIVE EXPERIENCES. THIS TOOL FURTHER CLARIFIED THAT WHILE SOCIAL SPACES ARE VITAL, A SENSE OF PRIVACY, PRACTICAL FACILITIES AND VARIED AREAS ARE ALSO IMPORTANT, AND THESE ASPECTS WERE THEREFORE IMPLEMENTED WITHIN THE FINAL DESIGN.



## ZONING DEVELOPMENT

SPATIAL SKETCHES, ZONING DIAGRAMS AND BASIC PLANS WERE PRODUCED AS PART OF THE DEVELOPMENT PROCESS, IN ORDER TO BEGIN TRANSLATING RESEARCH ONTO THE SITE. THIS ENCOURAGED CONSIDERATION OF DESIGN ELEMENTS, SCALE AND LAYOUT.

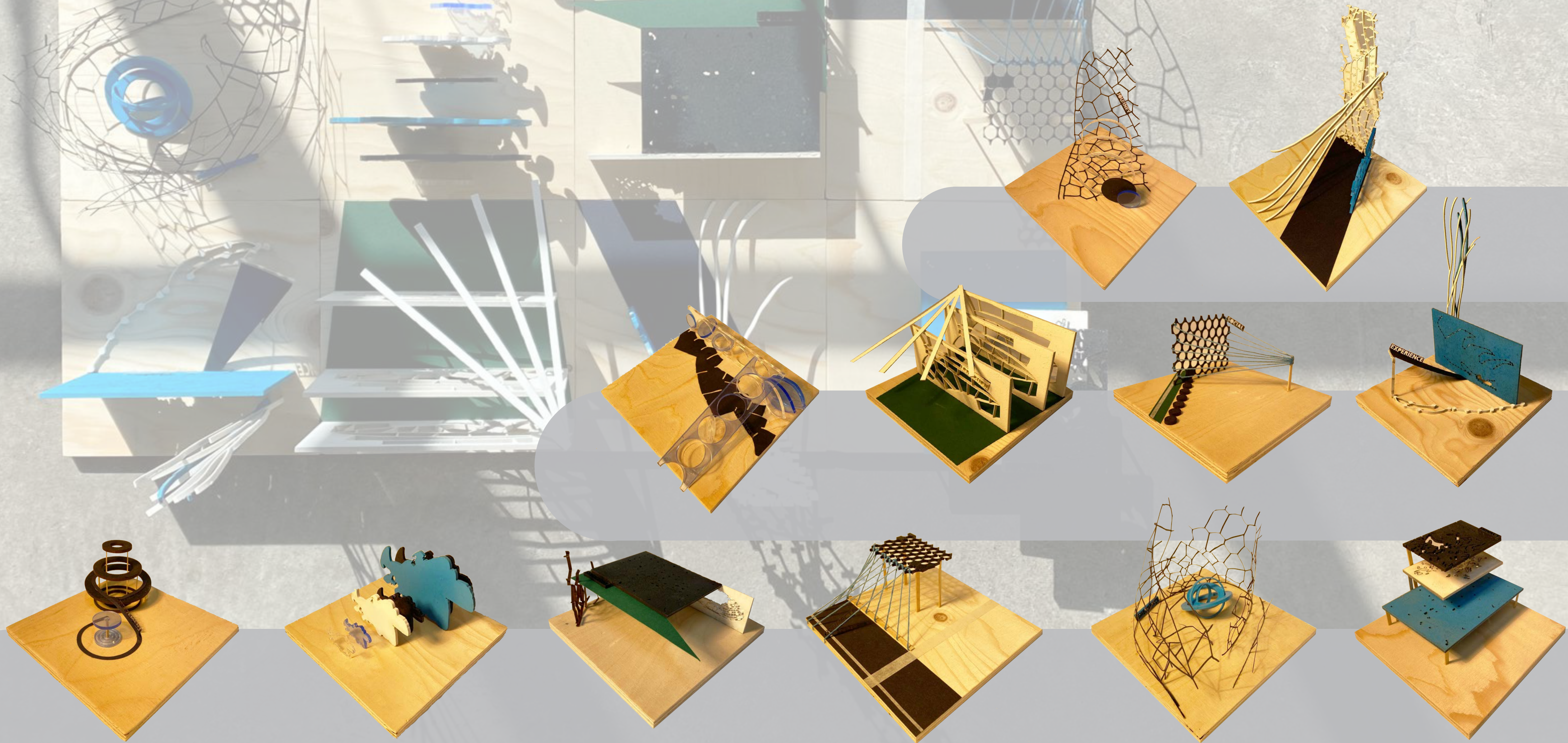


## SKETCH MODELS

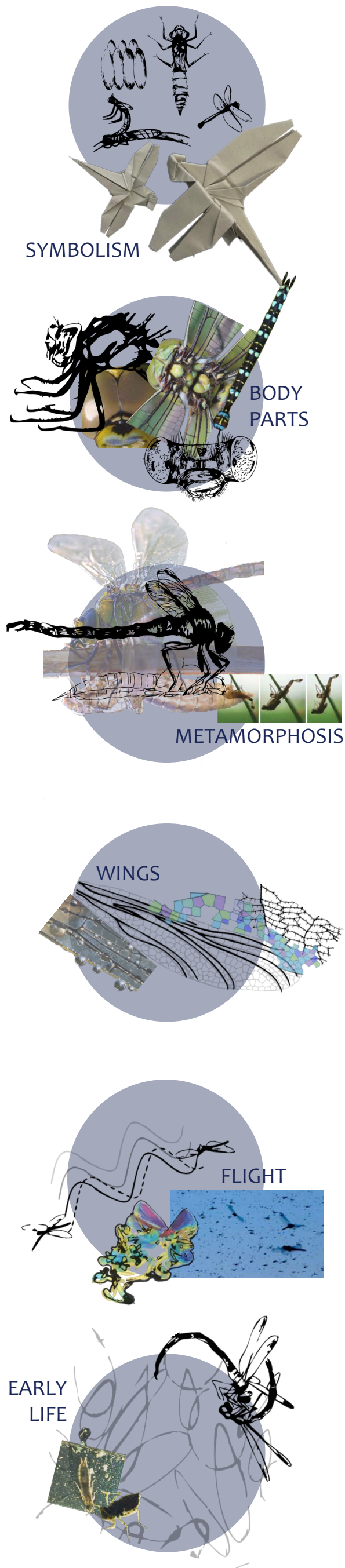
AN INFLUENTIAL CONSIDERATION WITHIN THE DESIGN IS THE SITE'S HISTORY, THROUGH APPRECIATING THE ORIGINAL BUILDING AND CREATING A STRONG CONTRAST BETWEEN THE ART NOUVEAU STYLE EXTERIOR AND THE CONTEMPORARY INTERIOR REDESIGN TO ENSURE BOTH ARE STRIKING.

ADDITIONALLY, DUE TO THE SHARED CONCEPTS OF JOURNEY, TRAVEL, EXPERIENCE, MOVEMENT AND FLIGHT BETWEEN DRAGONFLIES AND TRAVELLERS, INSPIRATION FOR THE HOSTEL'S DESIGN HAS BEEN TAKEN FROM DRAGONFLIES.

DETAILED RESEARCH INTO DRAGONFLIES WAS CONDUCTED AND THIS THOROUGH UNDERSTANDING INFORMED SKETCH MODELS WHICH WERE KEY TO EXPLORING THE PROPERTIES OF DRAGONFLIES, SOLIDIFYING KEY ASPECTS AND HELPING TO VISUALISE WHAT THE FINAL DESIGN OUTCOME COULD BECOME.







**POISE**  
HARMONY OF STRENGTH,  
AGILITY AND IRIDESCENCE  
(CEILING FEATURE)

**OPTIC  
LOOKOUT**  
A CHANCE FOR SLOW  
OBSERVATION  
(MEZZANINE)

**INTERPHASE**  
FOR REST, REFLECTION  
AND EMERGENCE  
(BATHROOMS)

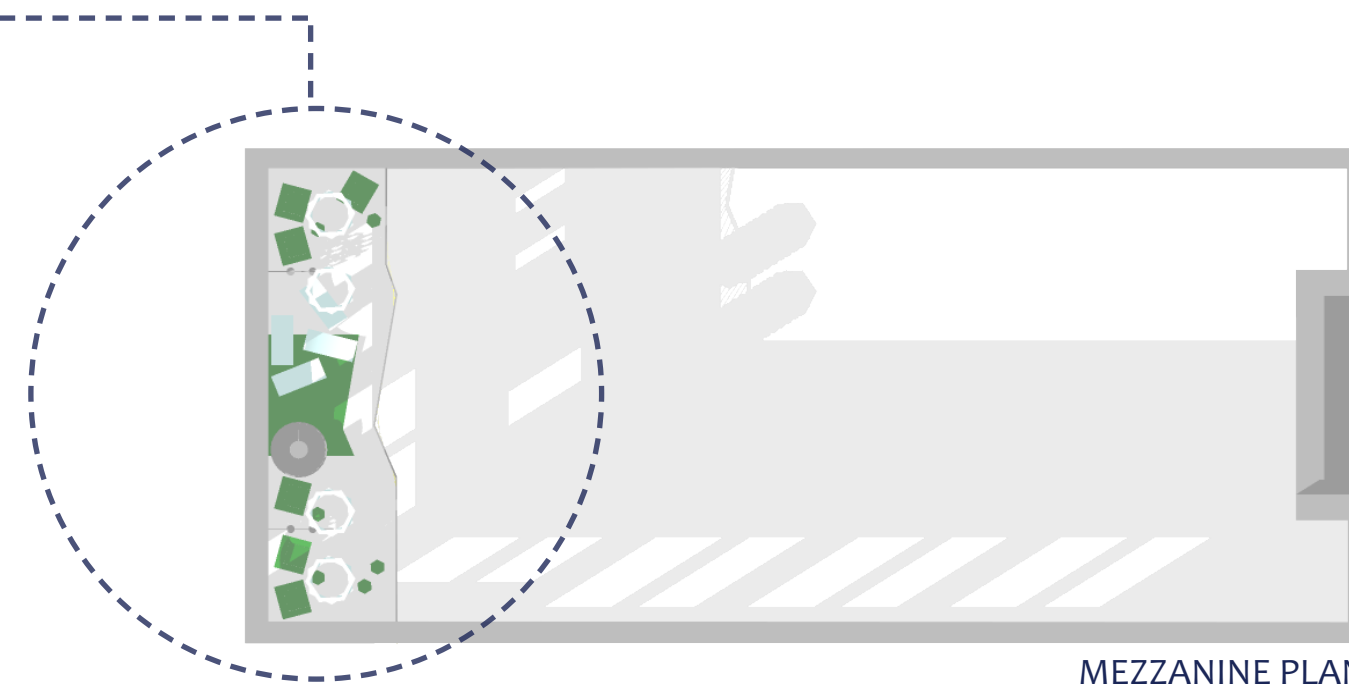
**ETHEREAL  
DREAMS**  
DRIFT INTO TIMELESS SLEEP  
(POD CLUSTERS)

**AXIS**  
EXOSKELETON CONNECTING  
THE SPACE  
(STAIRCASE)

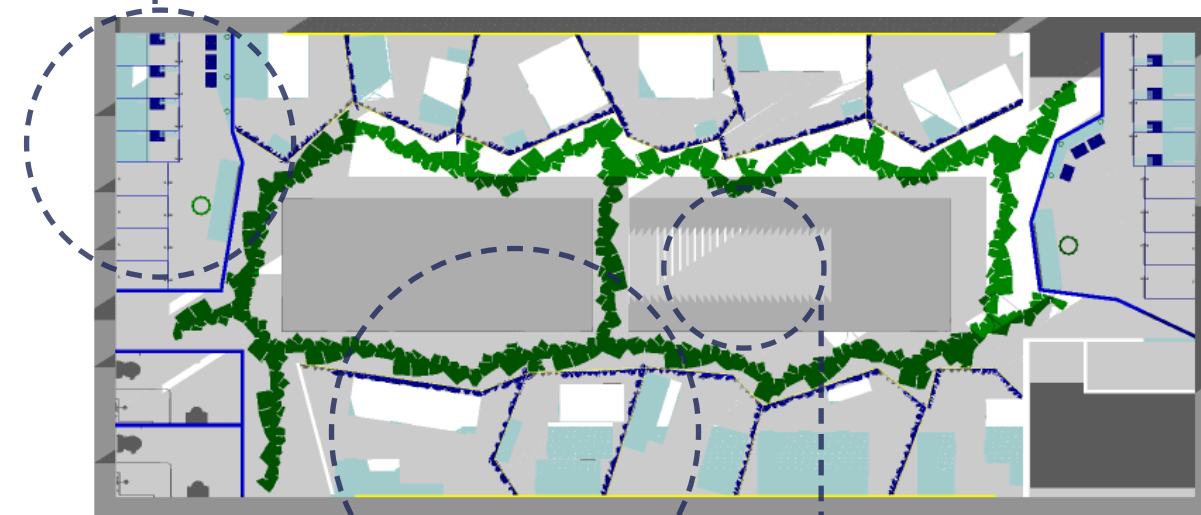
**SLIPSTREAM  
SOCIAL**  
FULL OF MOVEMENT  
AND ENERGY  
(OPEN SOCIAL AREA)

**THE HATCH**  
FIRST STAGE ENCOUNTERED  
(RECEPTION)

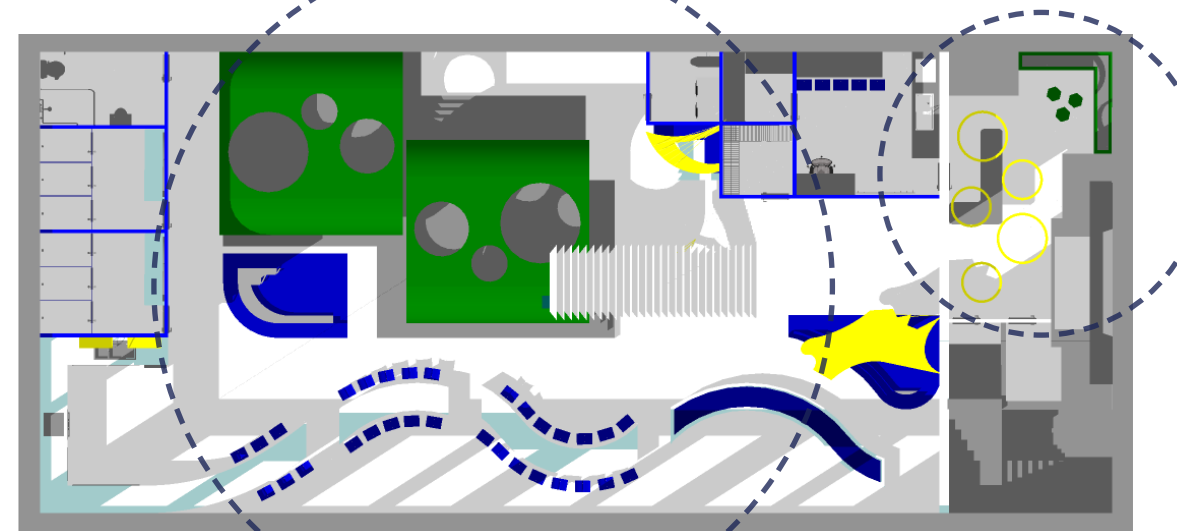
VARIED DRAGONFLY ELEMENTS HAVE BEEN USED  
TO INFLUENCE EACH DIFFERENT AREA OF THE HOSTEL:  
DRAGONFLY SYMBOLISM INSPIRED THE CEILING  
FEATURE, THEIR EYES INFLUENCED THE MEZZANINE,  
METAMORPHOSIS INSPIRED THE BATHROOMS, WINGS  
INSPIRED THE PODS AND ROOMS, THE DRAGONFLY  
ABDOMEN INSPIRED THE STAIRCASE, FLIGHT INSPIRED  
THE SOCIAL AREA AND THE EARLY LIFE STAGES OF  
DRAGONFLIES INSPIRED THE RECEPTION AREA.



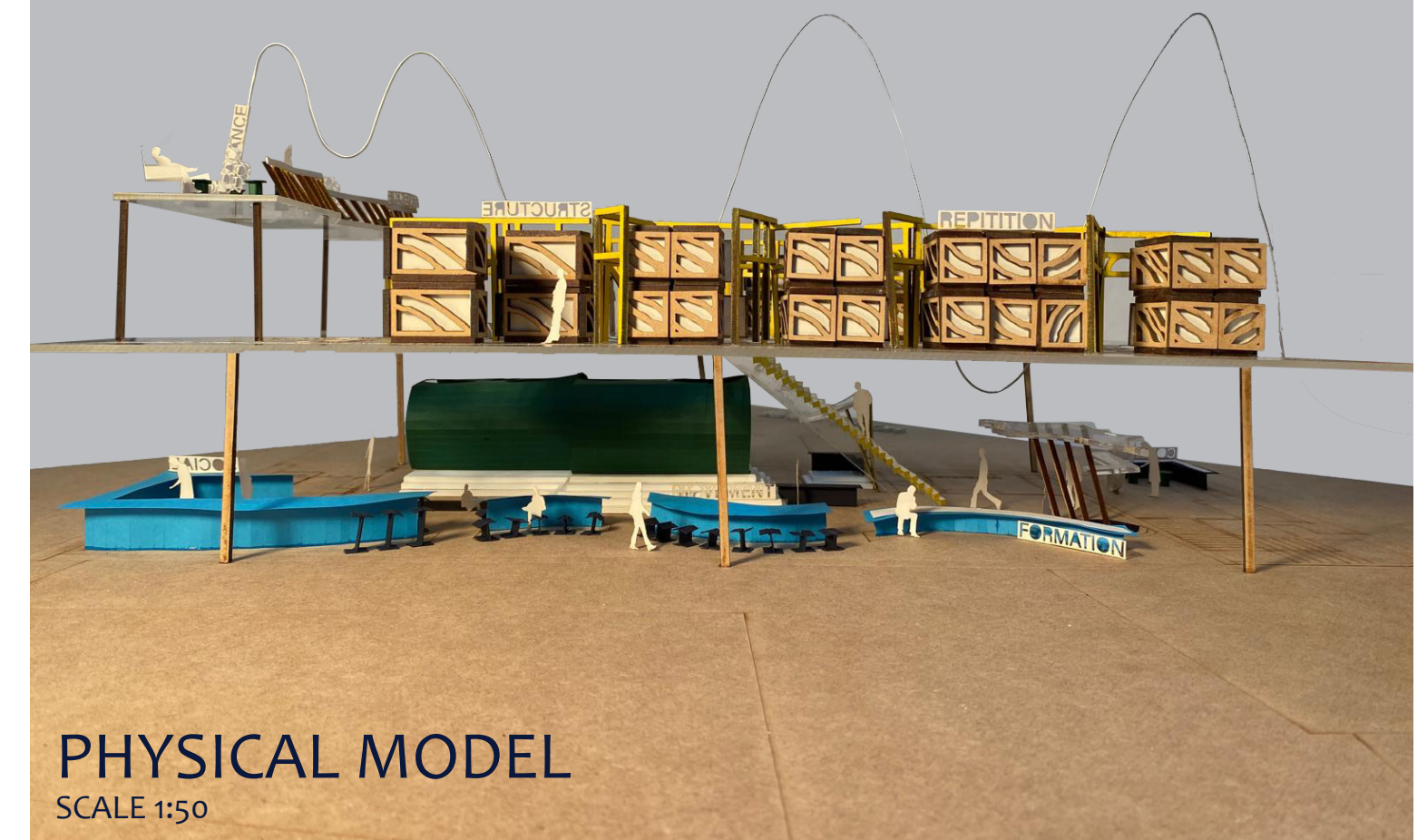
MEZZANINE PLAN



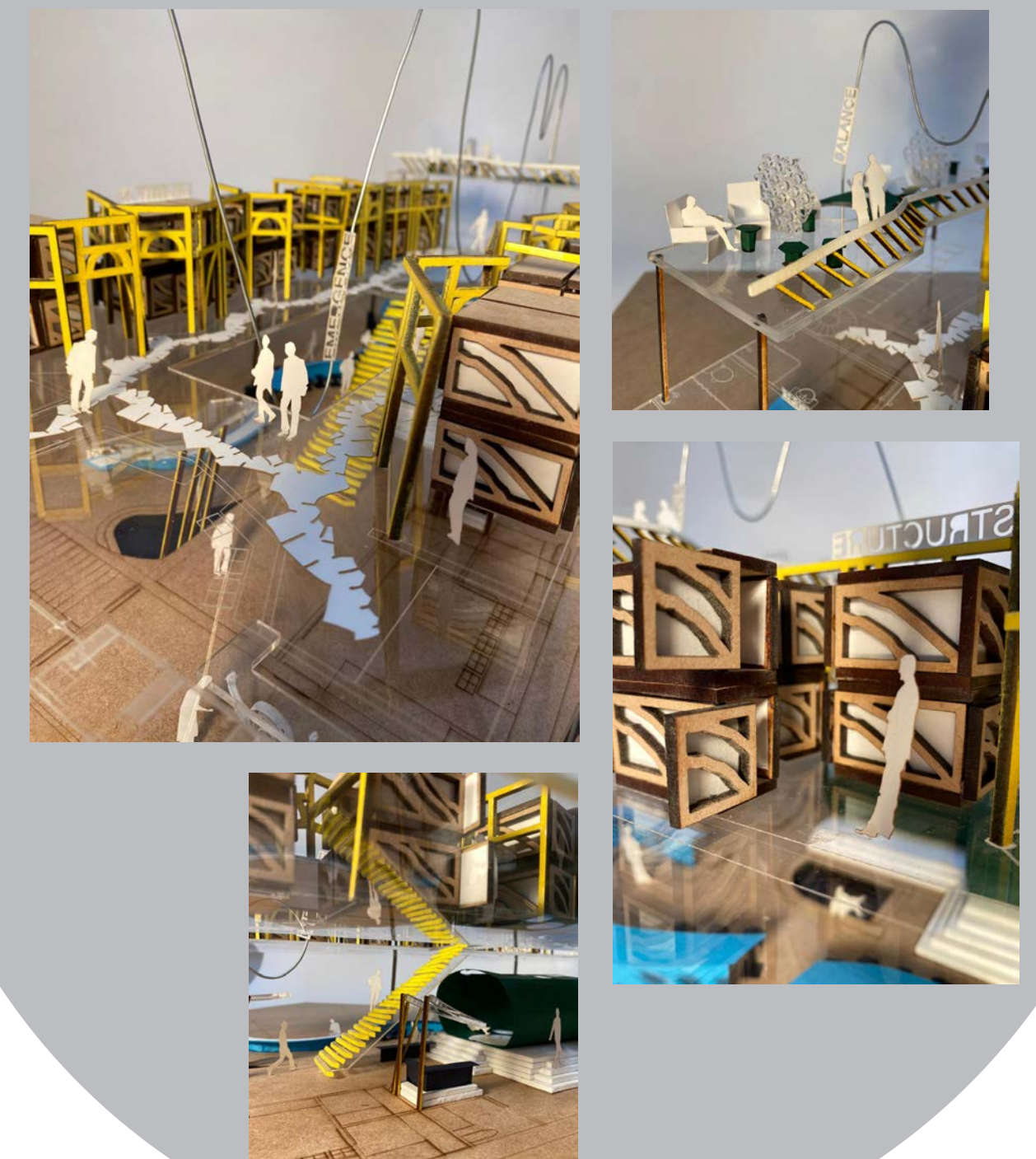
FIRST FLOOR PLAN



GROUND FLOOR PLAN

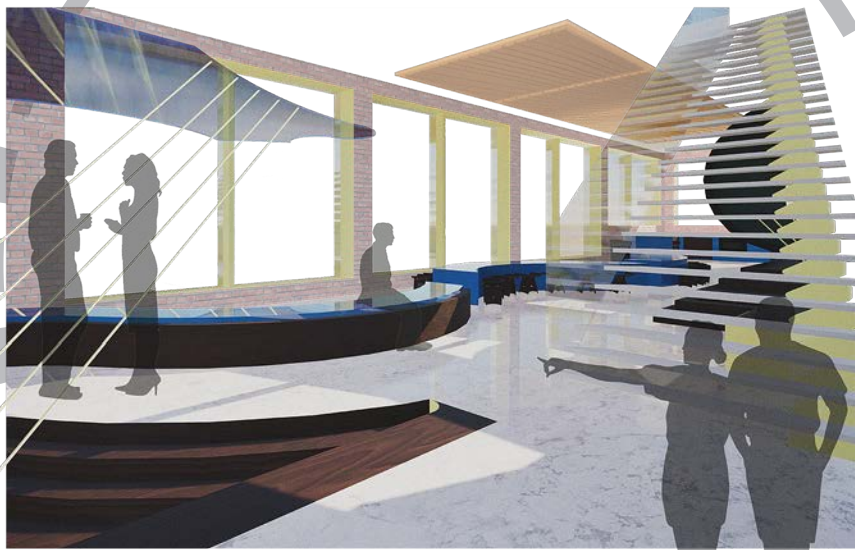


**PHYSICAL MODEL**  
SCALE 1:50

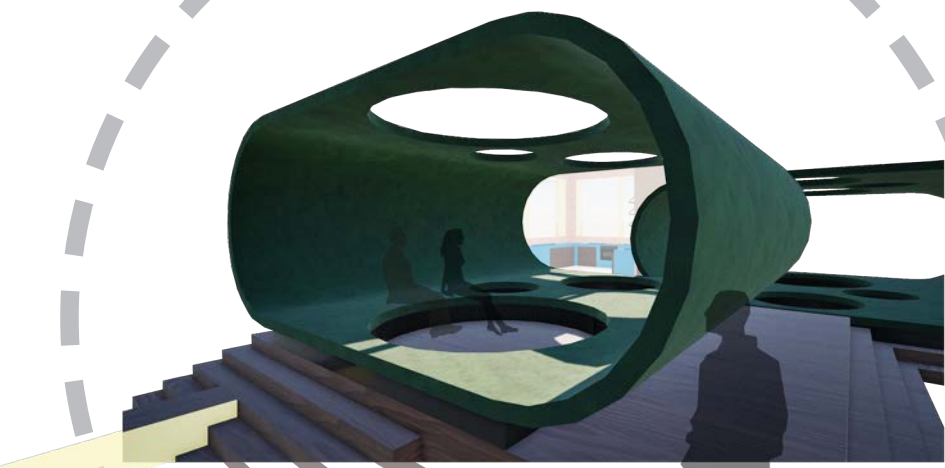




PERSPECTIVES



VIEW OF SOCIAL AREA



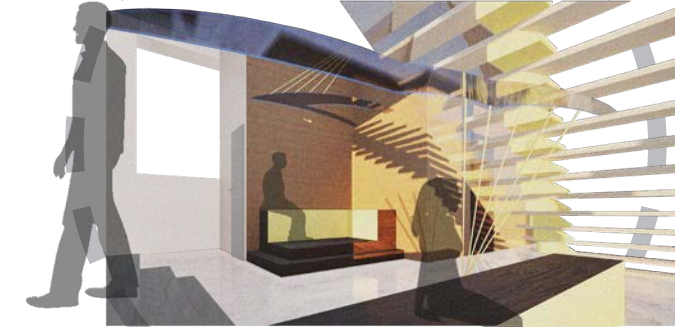
VIEW WITHIN SOCIAL AREA



VIEW OF MEZZANINE



VIEW OF SOCIAL AREA



VIEW OF SOCIAL AREA



VIEW OF RECEPTION AREA

UTILISING THE SITE'S OPEN INTERIOR IS IN LINE WITH THE FREE TRANSLUCENT QUALITIES OF DRAGONFLIES. TO ENSURE USERS DON'T BECOME OVERWHELMED, ELEMENTS SUCH AS BENCHES, CANOPIES AND DIFFERENTIATION IN FLOORING LEVELS HAVE BEEN CONSCIOUSLY DESIGNED, ALLOWING MORE INTIMATE AREAS FOR VARIED ACTIVITIES.

MAGNIFIED WING PATTERNS DICTATE THE ROOM LAYOUT AND INFLUENCE AN ORGANIC WALKWAY TO CONTRAST THE STRAIGHT EDGES OF THE CENTRE VOIDS. A FRAMEWORK SEPARATES THE BED CLUSTERS WITH DRAMATIC CURTAINS ACTING AS SOFT PARTITIONS. ADDITIONALLY, THIS FRAMEWORK ALLOWS THE CLUSTERS TO ADAPT TO CREATE VARYING ROOM SIZES AND TAILOR SPACES BASED ON THE USER'S NEEDS. TO ENSURE A SENSE OF PRIVACY AND SECURITY, PODS CAN BECOME FULLY ENCLOSED USING SLIDING DOORS AND HAVE SOUND ABSORBING PROPERTIES TO ENSURE GUESTS ARE UNDISTURBED.

UTILISING THE HIGH CEILINGS, THE MEZZANINE PROVIDES A CALMER MORE PRIVATE SPACE, ALLOWING GUESTS TO OBSERVE FROM ABOVE, WHILE THE SWOOPING MESH CEILING FEATURE ACTS AS A CONNECTOR FOR THE WHOLE SPACE.



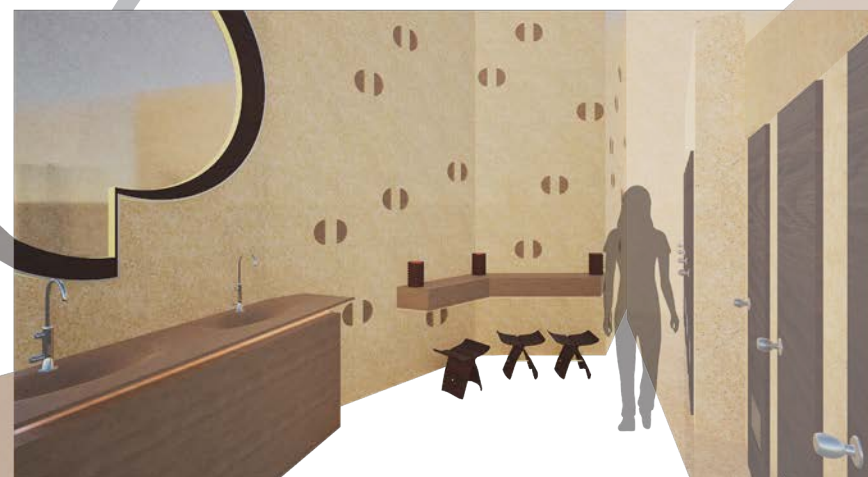
VIEW OF POD CLUSTER



VIEW WITHIN POD



VIEW OF FIRST FLOOR WALKWAY



VIEW OF BATHROOMS



BUTTERFLY STOOL  
SORI YANAGI  
1956

HOW HIGH THE MOON  
SHIRO KURAMATA  
1986

WIRE S#1  
MULLER VAN SEVEREN  
2017

LUNA  
CLAESSON KOIVISTO  
RUNE  
2005



WHITE  
MARBLE

GLASS

GALVANISED  
STEEL

ASH  
WOOD

AMERICAN  
WALNUT  
WOOD

GREEN  
VELVET

NAVY  
COTTON

SPECIFYING

MATERIALS

THE MATERIAL AND COLOUR PALETTE IS USED TO ENFORCE A UNIFIED DESIGN, WITH VIBRANT BLUES, GREENS AND SMALL POPS OF YELLOW TAKEN FROM COMMON HAWKER DRAGONFLIES WHICH ARE HABITUAL WITHIN THE UK. DRAGONFLIES IRIDESCENT LIGHT CHARACTERISTICS INFORM THE USE OF GLASS, TEXTURED ACRYLIC AND MESH, WHICH IS CONTRASTED WITH AMERICAN WALNUT TIMBER AND HEAVY CURTAINS, INFLUENCED BY DRAGONFLIES RICH COLOURS AND STRENGTH.