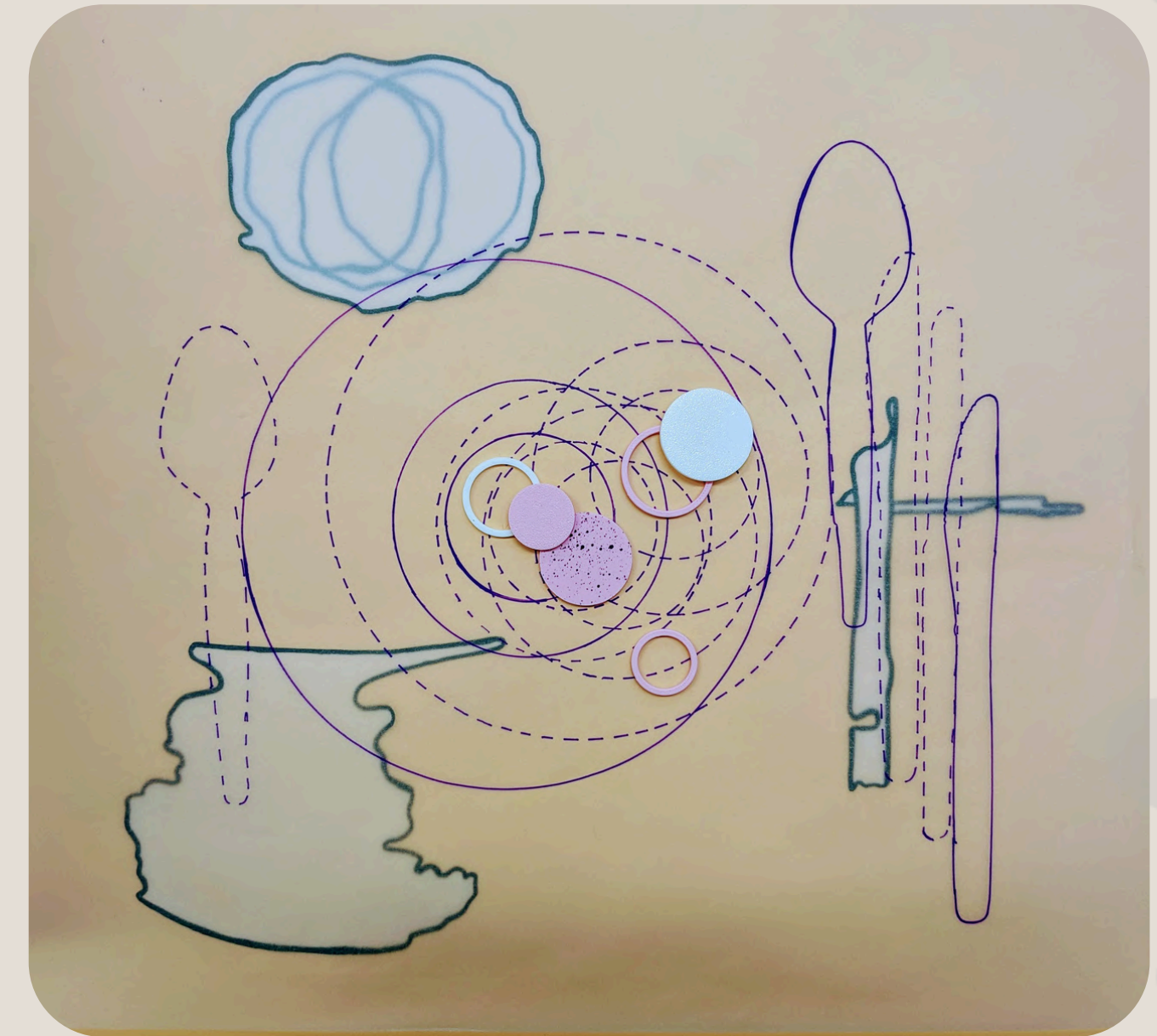


A Place for Movement – The Layers of Living

This project explores how interior architecture can respond to evolving physical needs and emotional well-being through a personalised and empathetic approach. Rooted in the lived experience of a client with Essential Tremor, it reimagines a traditional cottage in Gardenstown to support autonomy, spatial clarity, and adaptive living. By combining client engagement, ergonomic research, and material experimentation, the design proposes architectural solutions that challenge conventional domestic layouts.

The project includes a tremor-inspired extension, grip-assist product design, and a restructured open-plan interior focused on light, flow, and ease of use. It also introduces a real-world renovation of the client's kitchen, directly addressing accessibility and independence. This work presents a future-facing model for inclusive housing — one that values personal narratives and prioritises care through spatial design. In doing so, it aligns with the Interior Futures Award by envisioning home as a place of dignity, adaptation, and responsive innovation.



Engagement Task Analysis Collage

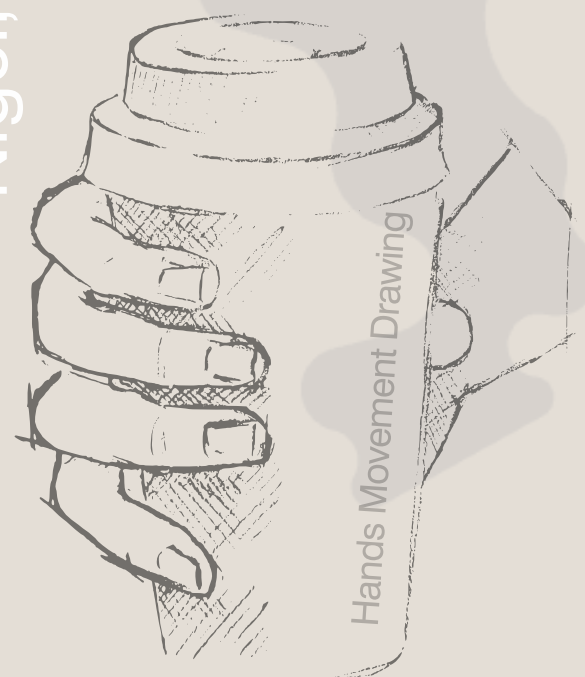


Visual Final Outcome

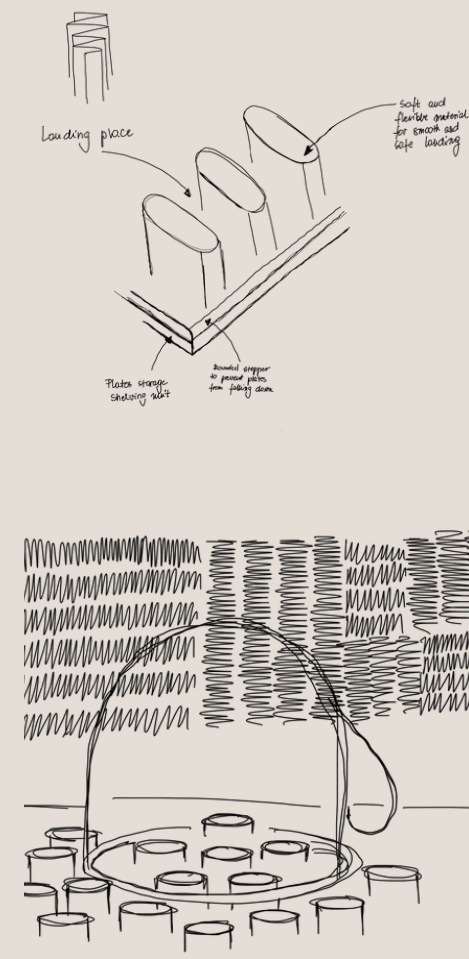


Concept and Research Collage

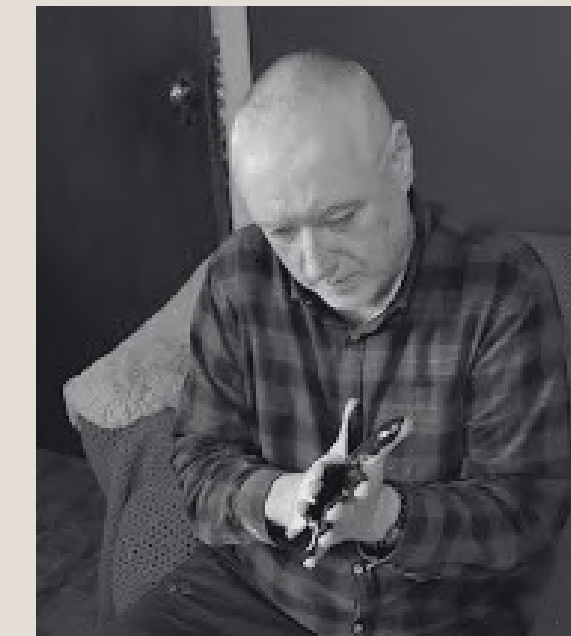
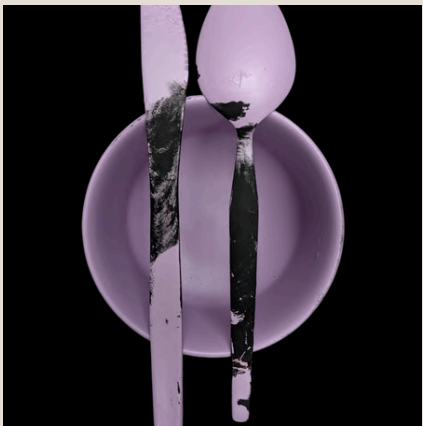
It's not about making things easier it's about making them feel normal again.
— Nigel, during an interview



Daily Objects for Tremor Sketch



Landing Matt Sketch

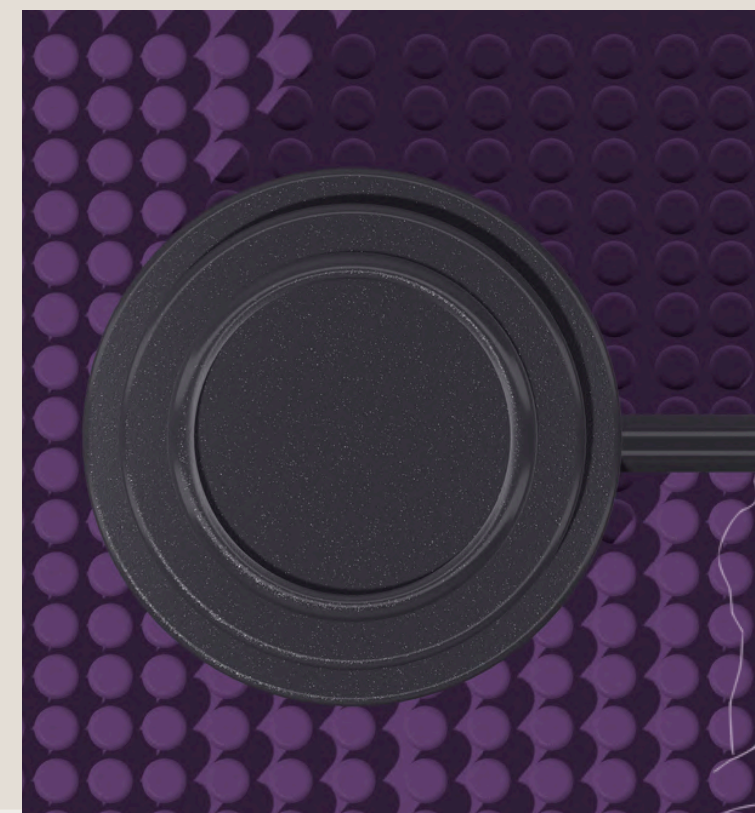
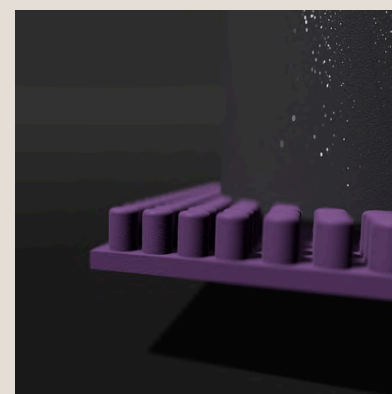


Engagement Task



“The houses were often altered as needs changed — rooms added, doors moved, walls thickened — not for style, but for survival.” — Kay Beaton, Old Gardenstown with Crovie and Pennan

This design is rooted in the lived experience of Essential Tremor — a neurological condition that affects movement, balance, and precision. Through engagement with the clients, Nigel and Tee, the project began with deep listening. Using a hands-on task involving marked daily objects, I recorded the challenges and touchpoints Nigel encounters in everyday tasks.



Landing Matt Rendering

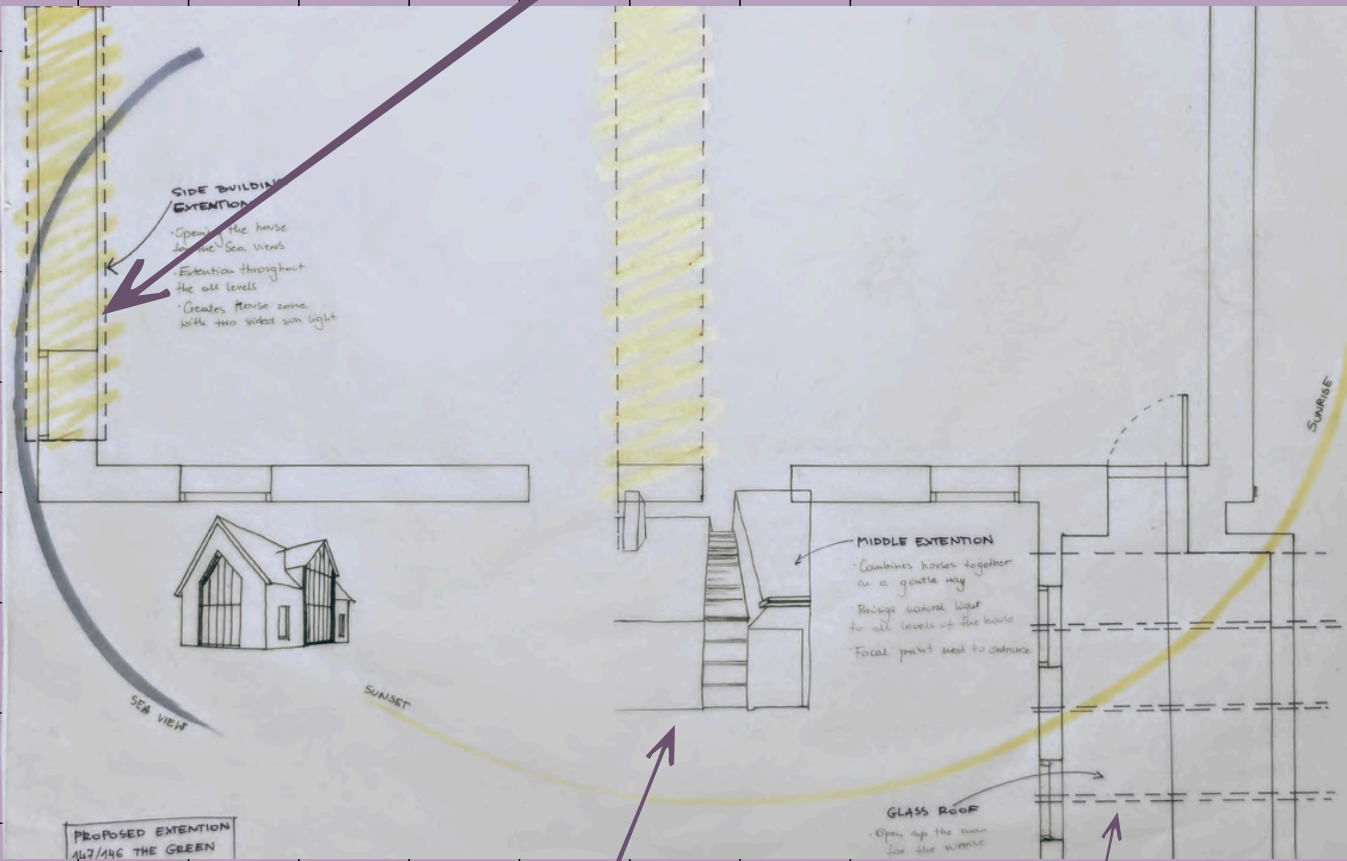
CONTEXT & RESEARCH



Nigel and Tee Sketch

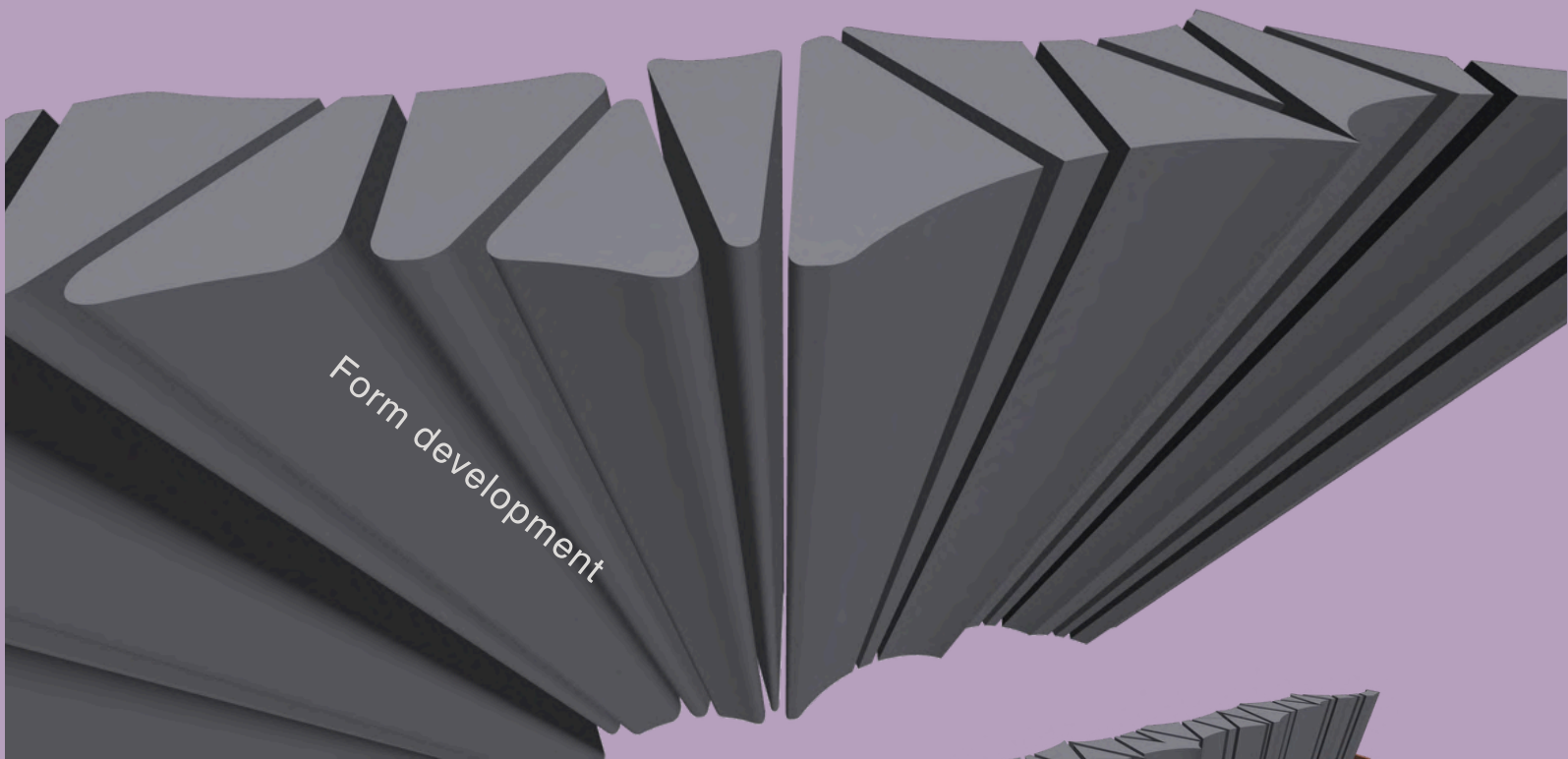


Side Building Extension
Opening the house for the sea views
Extension throughout the all levels
Creates house zone with two sided sun light



Middle Extension
Combine house together in a gently way
Brings natural light to all levels of the house
Focal point next to entrance

Glass Roof
Open up the room for the sunrise



Zigzag-to-curve transformation visual

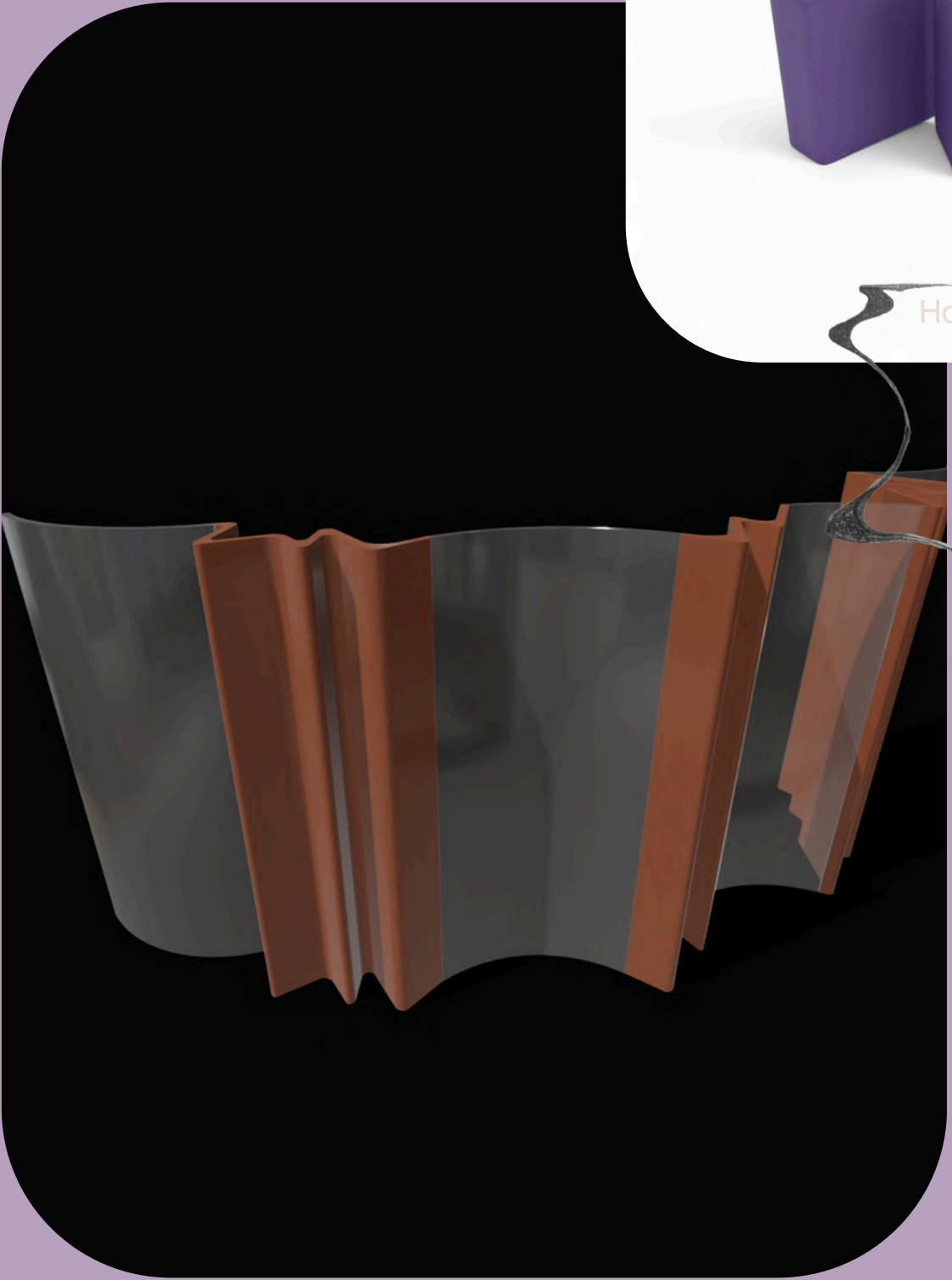
Initial concept models abstracted the tremor effect, tracing the instability and rhythm into layered zigzags and soft curves. These visual expressions became form drivers, influencing the layout, extension design, and material language. The progression from disjointed to coherent shapes echoed the goal of the architecture itself: to restore flow, comfort, and control. The building was explored through zoning studies, sun path analysis, and adaptive layout planning, resulting in conceptual sketches and physical models that guided each spatial intervention



Sketch Models



House Extension Sketch



House Extension Rendering



DESIGN OUTCOME

HOUSE AREAS

Exploded axonometric showing layers of movement, zoning, and house areas.



LIVING ROOM

The social heart of the home, connected to the fireplace and designed table/ book shelf. This space supports relaxed movement, soft seating, and evening routines.



GUEST ROOM

A self-contained space on the lower level, designed to offer privacy and independence for visitors. Its hotel-style layout supports comfort and accessibility.



KITCHEN

An ergonomic kitchen featuring stabilising elements like a handrail and landing zones. Designed to ease movement, minimise reach, and support safe, confident cooking.



BATHROOM

Compact and functional, with consideration for balance and reach. Fixtures are arranged for ease of use, comfort, and daily routine support.



BEDROOM

A calm and uncluttered private space, placed away from circulation flow. It offers a restful environment with natural light and minimal visual noise.



CRAFT ROOM

A flexible, creative space for focused activity. Designed with clear surfaces and supportive layout to reduce strain during hands-on tasks.



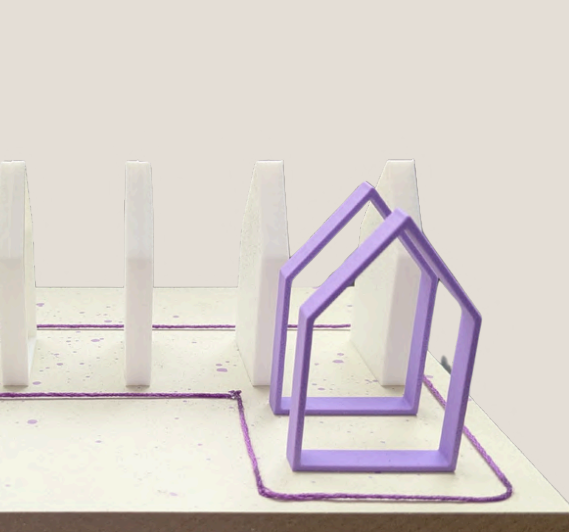
Proposed Extension View



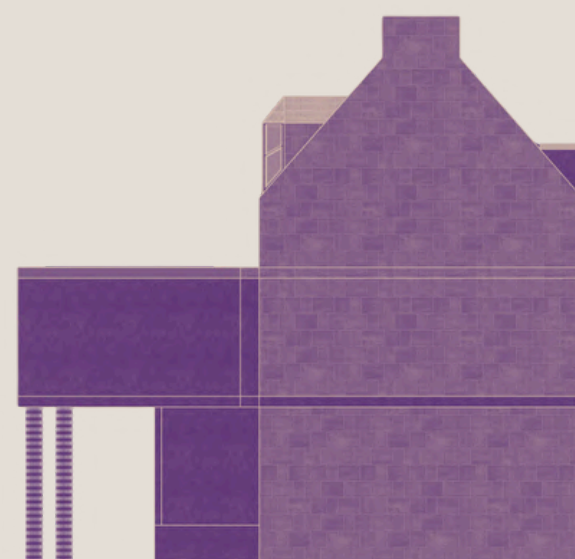
Proposed Extension View



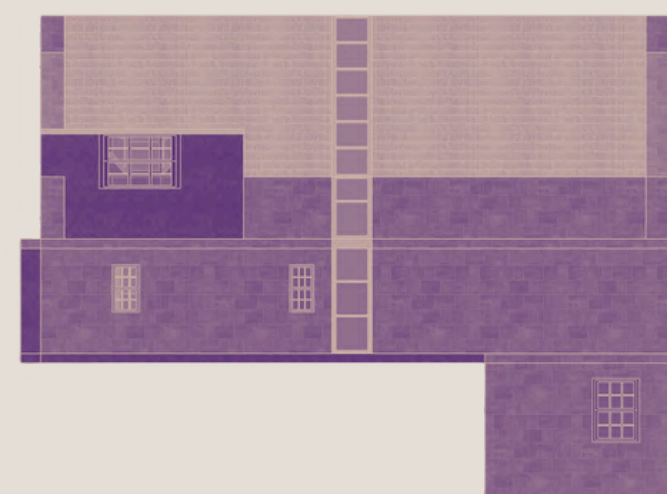
Proposed Extension View



Sketch Model



North Elevation



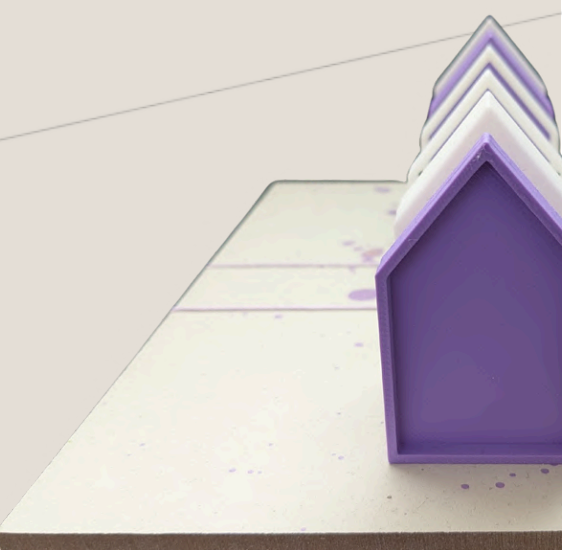
West Elevation



South Elevation



East Elevation



Sketch Model



Kitchen View



Kitchen View

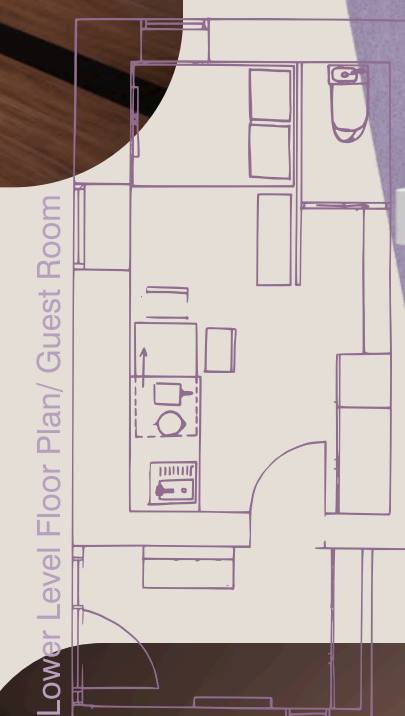


Physical Model 1:25

The redesigned home comprises three levels connected by a newly proposed glazed link, which acknowledges the structure's original unity while enhancing light, access, and movement. Floor plans and sectional diagrams illustrate the spatial transitions and expanded sea views.

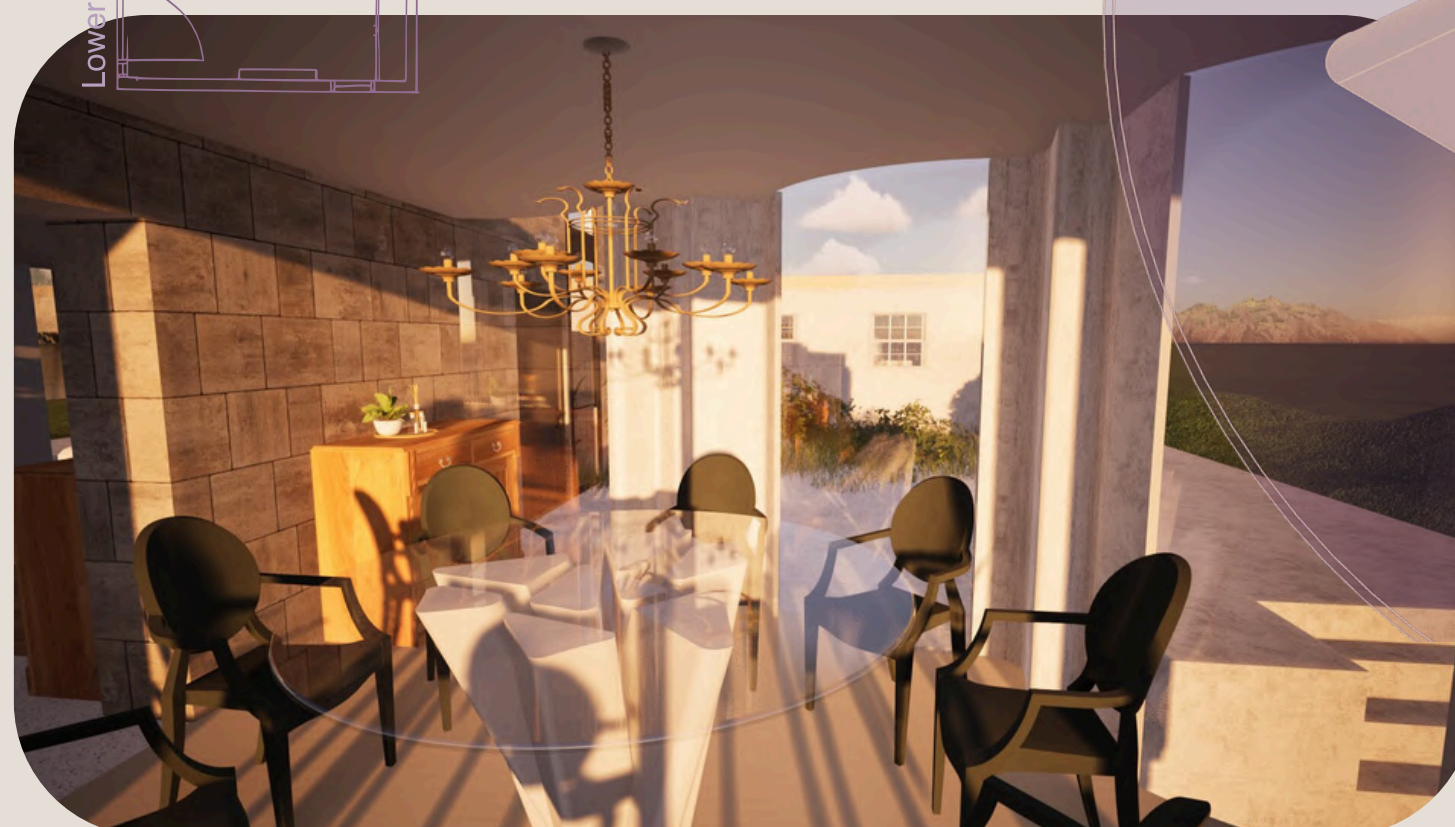


Ground Floor Plan



Lower Level Floor Plan/ Guest Room

Table/shelf design



Extension Interior View

Within, product design solutions such as a grip-textured shelf, a tactile fireplace, and an integrated rail system reflect specific responses to tremor-related challenges. Materials were chosen for their texture, tone, and ease of maintenance, contributing to an interior that is both warm and accommodating.



If you want to hear more scan here

Dinning Table Design Rendering