

Curiosity Cove

A sustainable, innovative and educational environment for families to learn and interact together through play.

Curiosity Cove is a sustainable, innovative and educational environment for families to learn and interact together through play, inspired by the Japanese art form of origami and the way in which children interact enthusiastically with their toys. Located within the former Queen Victoria Works, a derelict jute mill in the city centre of Dundee, this child and family centre is open for families between 7am and 4:30pm. In the evening, it transforms into a hub for expectant families to participant in antenatal classes. The outside space remains open until 8:30pm, allowing a safe space for youths to gather and socialise.



Scan for Project Video:

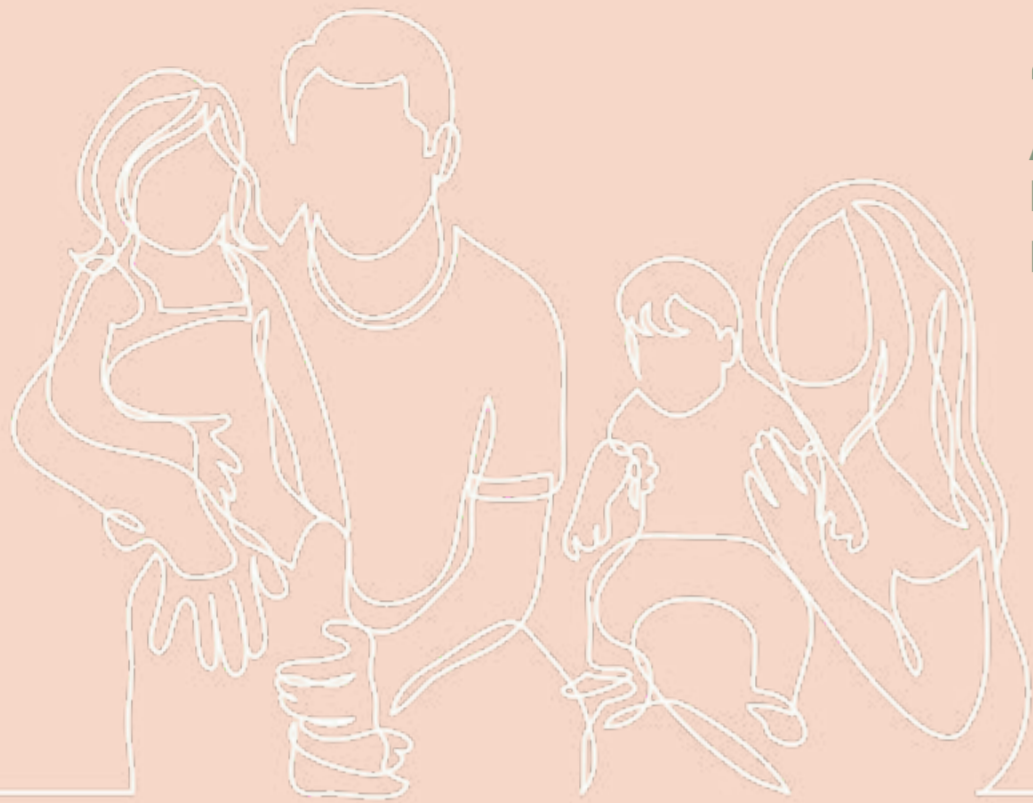
Link to project video:
https://youtu.be/Zh_q4yr-7qIM?si=-_ysq-vqTV2AQwiy



- | | | | |
|----------------------|--|-------------------------|--|
| The Toilets | | The Slide | |
| Changing Room | | The Cafe | |
| The Shower | | The Car Park | |
| The Staff Room | | The Bike Shed | |
| The Storage Room | | The sensory Garden | |
| The Meeting Room | | The Fruit and Veg Patch | |
| The Quiet Room | | The Picnic Huts | |
| The Entrance | | The Sand Pit | |
| Discovery Den | | The Seating Area | |
| The Learning Kitchen | | | |
| Together Space | | | |
| Sensory Central | | | |
| Community Library | | | |
| Exploration Station | | | |
| The Stairs | | | |
| The Lift | | | |



Research



“FAMILY LEARNING”
An approach to engaging families in learning out-comes that have an impact on the whole family

80% **28.2%** **36.4%**

of brain development is completed by the age of three - 90% by the age of five.

of children in dundee were living in poverty between 2021-2022

Of households in Dundee live in flats which means lack of access to private or safe green space

HOW DO CHILDREN LEARN?
THROUGH PLAY, COMMUNICATION AND INTERACTION



KINESTHETIC



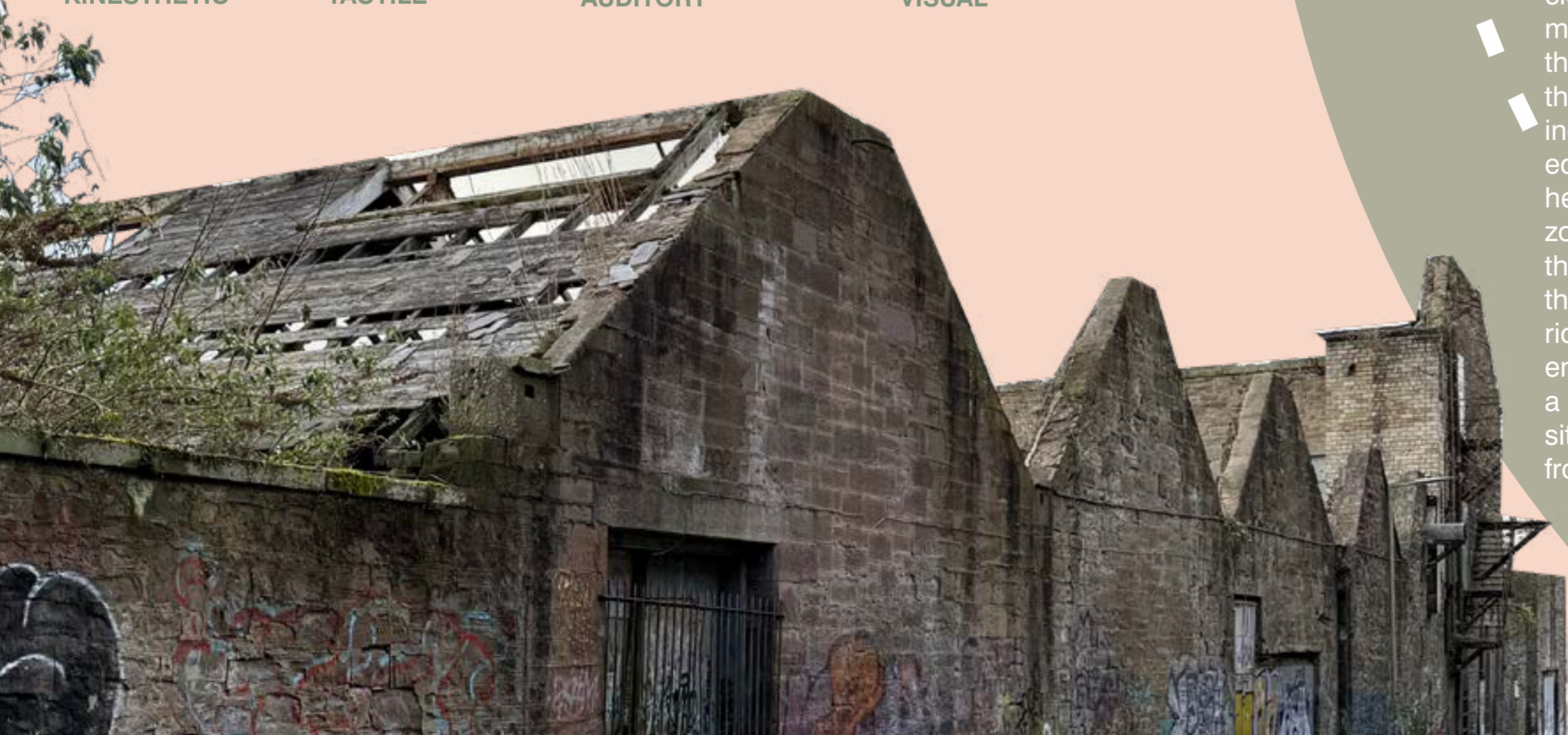
TACTILE



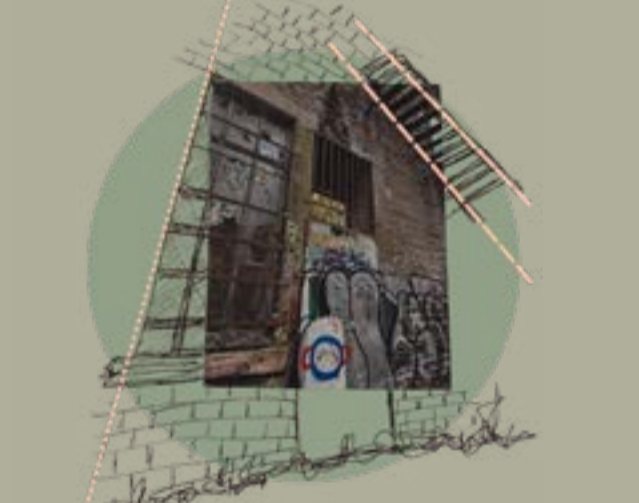
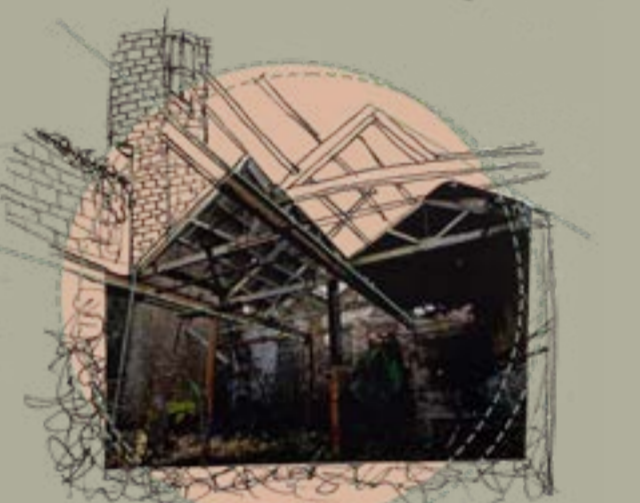
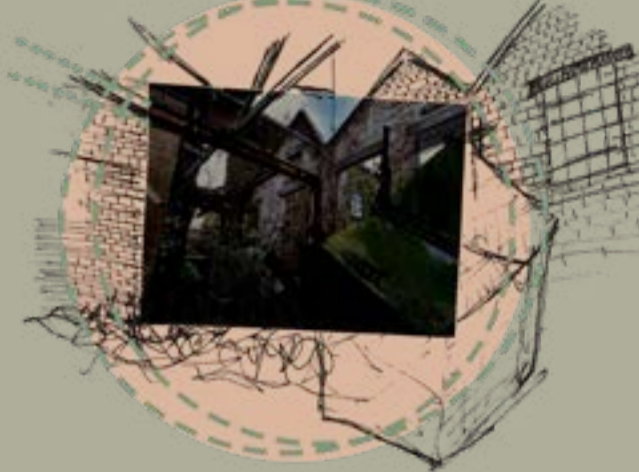
AUDITORY



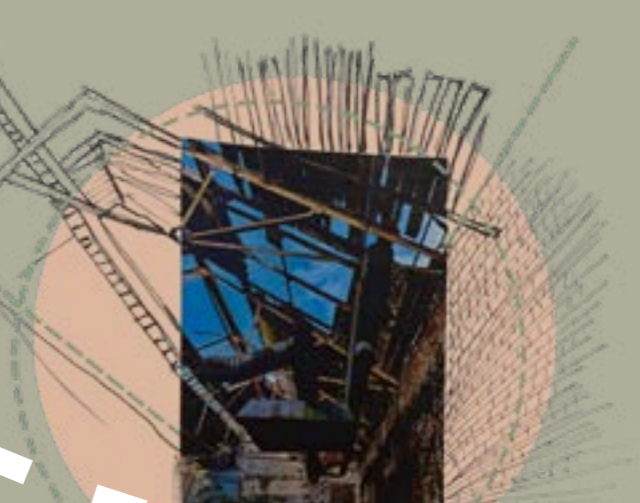
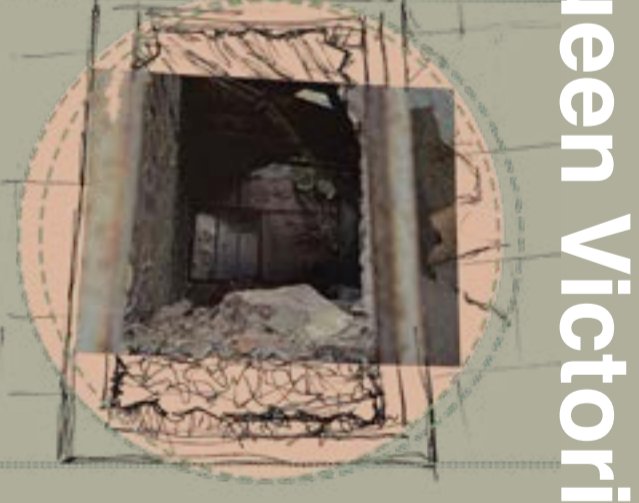
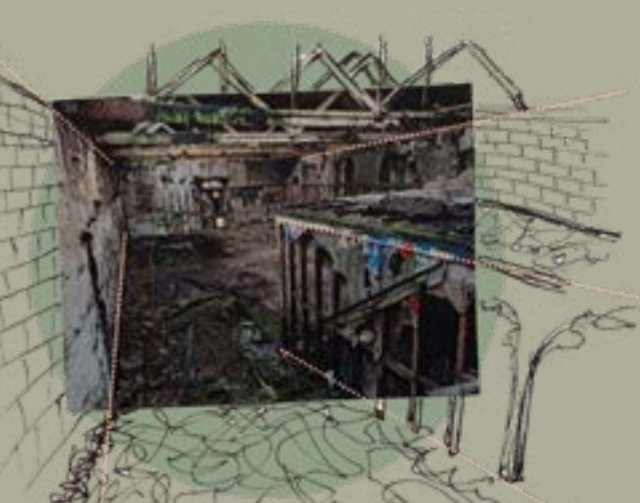
VISUAL



Site Analysis



Queen Victoria Works was the worlds oldest operating jute mill when it closed in 1990. Initially built as a flax mill in 1828, the building was then further developed and expanded upon in the 1860's to become a jute mill as the industry progressed. The site is located on the corner of Brook street in the heart of the Blackness conservation zone, and has remained empty since the closure of the jute mill. Since then, the category B listed building has deteriorated remarkably and has been given a high category of risk rating after a significant fire was recorded at the site in 2022, moving the site conditions from very poor to ruinous.



Queen Victoria Works

Development

The development stage took inspiration from the workshop held with a local nursery as well as my origami sketch models

Sketch Models



Engagement Task

To gain a better understanding of how a child would envision the space, I conducted a workshop at a local nursery, as well as three interviews with relevant professionals. The workshop first consisted of the children drawing themselves and thinking about what toys that they like to play with - this acted as an icebreaker and also allowed me to hear first hand what kind of activities and areas should be included within my design. For the second task, I brought along some magnatiles, wooden jenga blocks and the nursery provided some different shaped, coloured wooden blocks. The children then created their drawings in 3D using these toy pieces which then became like little sketch models which we were able to discuss. This was very helpful in kick-starting my design process as the children's imaginations led to a range of different shapes and the contrast in materials helped to project this.

The children decided that the following features should be included within the design of Curiosity Cove:

- a stage
- cooking classes
- vegetable patch
- somewhere to climb
- sensory area
- mud kitchen
- flower garden





Stokke Tripp Trapp Chair

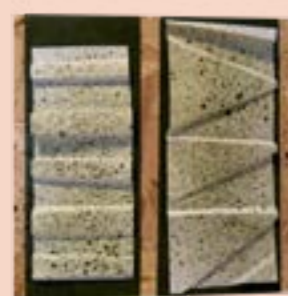


The Stokke Tripp Trapp chair is a safe, durable and versatile chair, offering a customisable seating option for all ages. The seat panels slide out to allow users to fully adapt the components of the chair as needed and additional components can be added to allow for newborn and older babies to use the seats. The visually appealing properties of the wooden oak frame combined with its scandinavian design allow for the chair to fit in with any environment. I have chosen to incorporate the Stokke Tripp Trapp chair throughout the entirety of Curiosity Cove as it adds a layer of equality between adults and children whilst ensuring a better posture as a result of all ages having both feet flat on a surface, which is especially crucial when eating or concentrating.

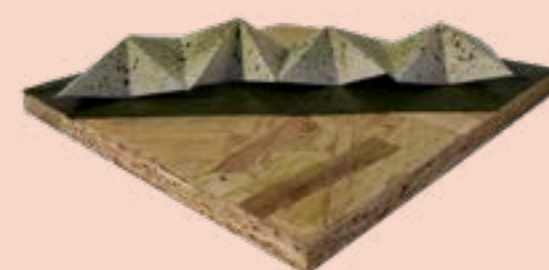


EcoCero Lumomesh Panels

The Room Studio, an interior design studio based in Barcelona, have collaborated with EcoCero, a leading acoustic panel brand also based in Spain to create a customisable, innovative and sustainable new product. Lumomesh panels are made from recycled plastic bottles and are available in a variety of different colours which can be completely customised to meet the needs of every project. As a company, EcoCero strive to achieve sustainability in all aspects of their brand. For example, they are neutral in CO2 emissions and every 1m2 of their products contain 75 recycled plastic bottles. I have chosen to include EcoCero Lumomesh panels throughout the design of Curiosity Cove as they are not only aesthetically pleasing and an alternative solution to regular lighting, but they reflect my sustainable design approach.



Sketch Models



Final Outcome



The Entrance

The bright, well lit and welcoming entrance space features a non intrusive and friendly reception area, creating a positive first impression when entering the centre. The staff room and meeting room are hidden behind the door of the large curved wall to maintain privacy for staff and individuals seeking advice/support. The curvature of the wall guides visitors into the main play area.



Sensory Central

Sensory Central offers an engaging atmosphere and encourages families to interact with the space whilst developing strong attachments together.



The Together Space

A cosy, comfortable and multipurpose space, providing opportunities for groups to take place.



Discovery Den

Discovery Den offers a modern and novel approach to learning. The space offers opportunities to host a variety of activities, including arts and crafts malleable experiences and animal visits. The combination of natural and synthetic light allows for optimum viewing of resources. The motion of the swings help keep focus on the activities run in the space.



The Community Library

Families can bring and exchange books, or simply enjoy the range of books that Curiosity Cove has to offer which have been donated by local residents or charitable donations. The curvature of the book shelves invites visitors into the space like arms reaching out for a hug. A balance of synthetic and natural lighting provides a comforting and relaxing environment for families to share stories, texts and poems.

Final Outcome



The Learning Kitchen

The Learning Kitchen provides opportunities for families to learn new skills together using produce grown in the garden. For example, weighing, measuring and practising safe use of utensils etc.

Multilevel workspaces and sinks allow for the whole family to be involved in learning and development, giving children the opportunity to develop independence and life skills in a safe environment.



The Exploration Station

A space encouraging the use of imaginative play through random objects, hidden spaces, balancing and climbing opportunities which promote physical, social and emotional skill development.



The Slide

The slide offers a fun transition for anyone who dares, from the cafe back down to the main play space.



As the garden is open in the evening, it is important to ensure that the area is well lit. I have chosen to add solar panel LED area lights to outline the different areas within the garden. The lights automatically change colour gradually throughout the evening, adding an additional sensory and vibrant atmospheric layer for families to enjoy.

The Garden

As a result of poverty and city living in Dundee, 36.4% of households live in flats which means there is a lack of access to private or safe outdoor space. Curiosity Cove offers families a communal garden space to play grow and learn together.

The garden comprises of:

- The Seating area
- The Sand Pit
- The Sensory Garden
- The Fruit and Veg Patch
- The Bike Shed

The floor of the garden is made up of a variety of colours of wetpour flooring from abacus playgrounds. Each garden zone has a different colour. The wet-pour material enhances my sustainable approach to design as it is made from recycled tyres.

The garden can be enjoyed by families of all ages and is open during the day and in the evening to support a work life balance.

The Cafe

Produce from the fruit and veg patch along with fare prepared in the learning kitchen help keep the running cost of the cafe to a minimum.

Visitors can enjoy a range of soups, sandwiches etc. at lower prices with children receiving a free nutritional lunchbox covered by charitable funding.

