

infuzorb

“Is it the buildings or the people who need treatment?”
Using inflatable design to tackle 'sick building syndrome' and enhance wellness.



social condenser
innovative
unique
safe
light soft

age-friendly calm

A view inside

temporary or permanence - personalisation

agency adapted

infozorb Research

stakeholders



Sick building syndrome



Sick building syndrome is a physical and mental illness, brought on by interior surroundings.

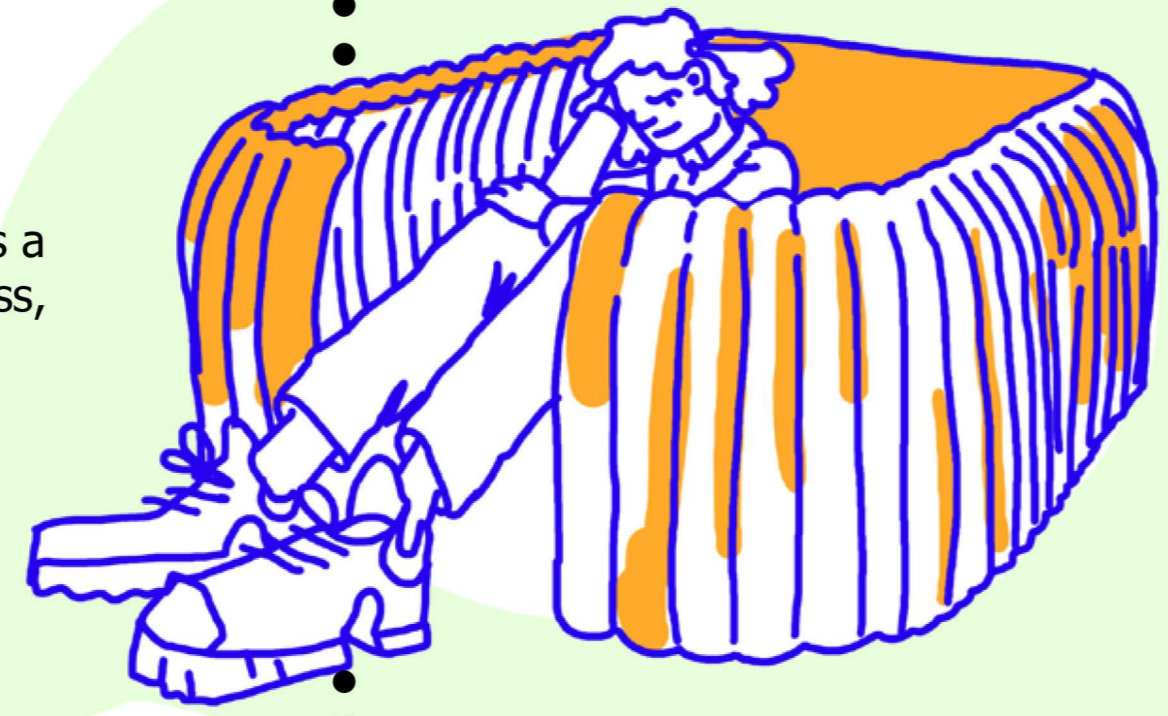
Symptoms include anxiety, depression, headaches, skin conditions and even flu-like symptoms.

This means that our interior spaces, be it our workplace or the home, are not doing a sufficient job at keeping us healthy and happy. An intervention of the spaces we live in is needed.



Discussed visions of everyone enjoying later life, wherever they may be living - helpful to understand inclusive design.

HOME OF 2030 Ideas of using resources efficiently and providing a healthy and attractive place to live.



Habinteg are known for helping create accessible homes, their values are to be ambitious, attentive and agile in their design and approach.



"The design of objects for the disabled rarely incorporates the exploration, celebration, and play that design culture fosters."

What do you feel your home is missing, that could ensure your wellbeing?

Asking many stakeholders to complete a questionnaire to gain insightful information:

Benvie Carehome Manager insights:

"Decor and design is helpful as it creates comfort and a sense of familiarity when done right."

"Colour and vibrancy, recognisable zones all make spaces easier to use."

"Layout of rooms could be arranged better... my corridor is narrow and the lighting is horrible, giving it a depressing feeling."

"Lighting, some of the rooms don't get sufficient lighting and they often feel gloomy - making me want to spend more time outside of my home."

"The living space in my home is claustrophobic and cramped, and because of this I am unable to relax. It also lacks personality and I wish I had the freedom to adapt my space."

"Green-space and lighting for sure, although not at the expense of warmth. I would also prefer no steep stairs and for my home to be more energy-efficient."



Scott, 24



Andrew, 39



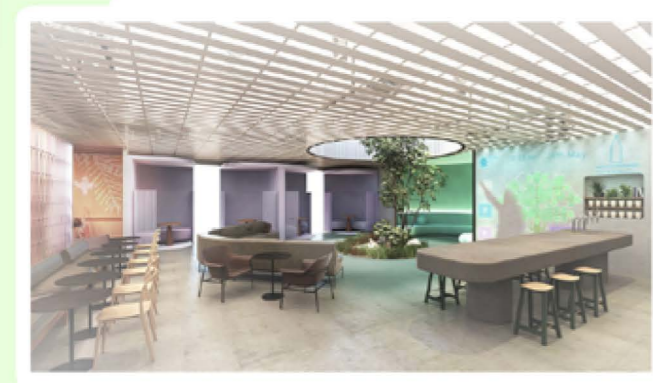
Lucy, 23



Peter, 61



wellness in the home



Practice of the Future - Softroom Architects for NHS



Endless House Frederick Kiesler



Home Futures The Design Museum



Bioscleave House Arakawa & Gins

inflozorb Development



Many artists and designers use popped or broken inflatables to either re-fibre or sew the materials into new items.

Sketching was extremely important for developing this proposal, as it needed to work well in a normal home environment.



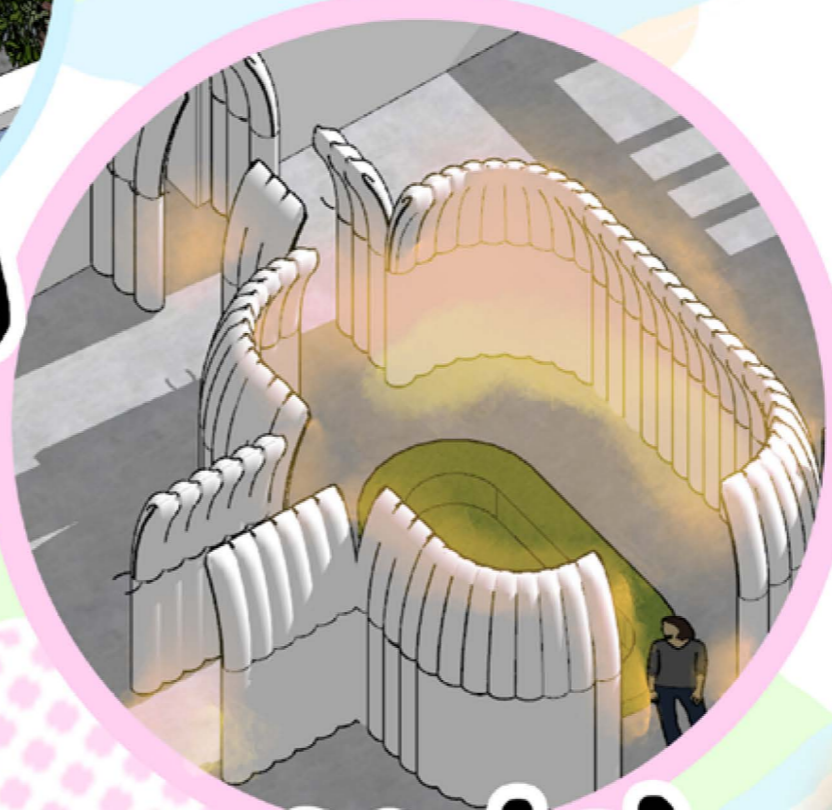
Sketches



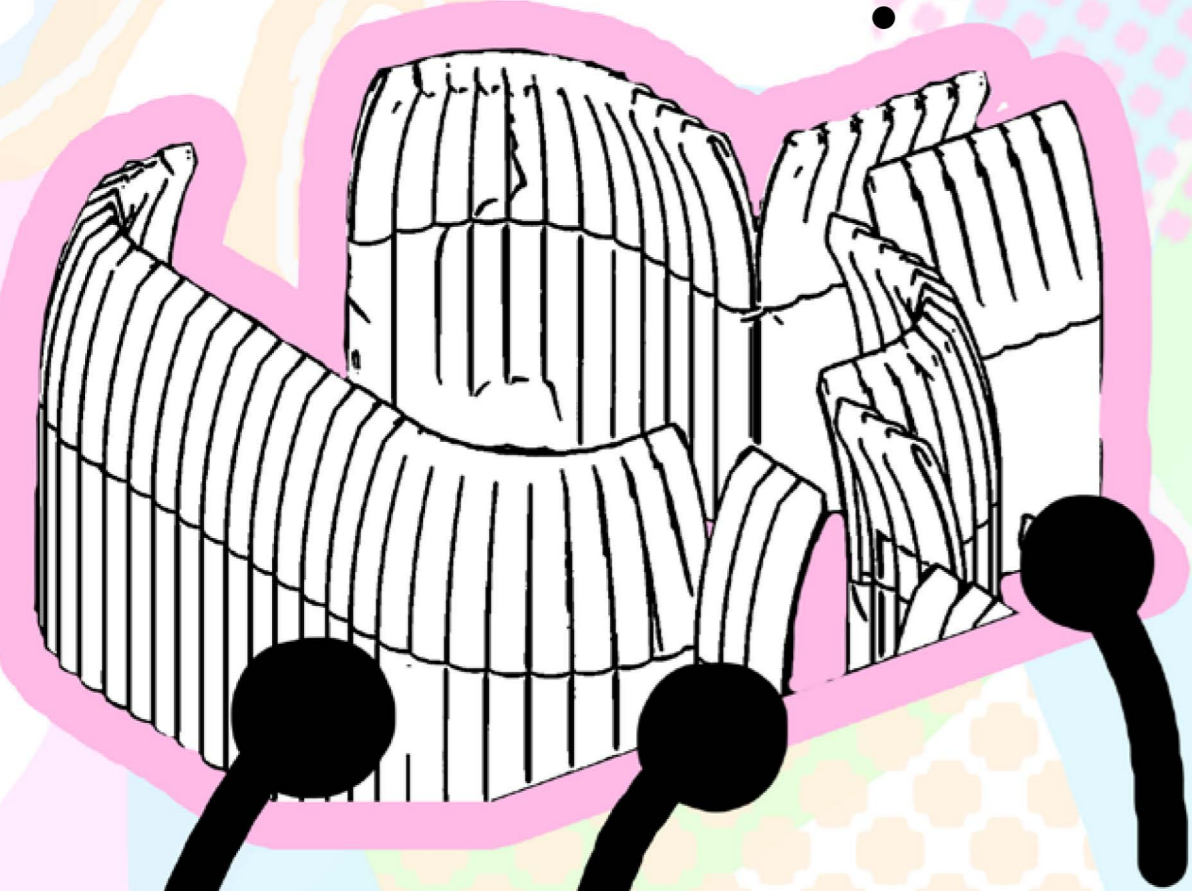
SketchUp and other 3D software enabled designs to take a truer more realistic form to visualise a concept, as seen in several stages here.



3D modelling



Social Condenser



Costing approximately £4000 for a space such as this, it is cheaper than a lot of other home renovation methods.

The space acts as an innovate way to modernise a home in a unique way, by allowing users to adapt their open-plan, accessible home in the way that they choose to.

Machine inflated, the space is able to be either permanently or temporarily sealed, the nature of the Inflozorb is it can be moved around to suit whichever home it is in. It can be deflated and stored, moved around and borrowed throughout a community.

Stakeholders revealed that biophilic design was also a key element to enjoy being in the home.

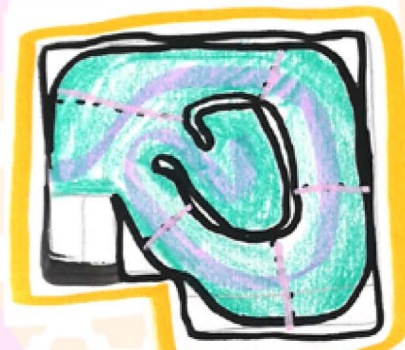
Model making
Sketch models were created using clay, allowing organic forms to be visualised well.



A stakeholder noted "the design looks fun, the idea of more soft shapes is interesting."

Another said, "I think the round shapes would be best balanced with normal walls for people to use."

Layout



Well-being is heavily connected to seeing people and socialising, so the space intends to act as a successful social condenser.

cob elements



inflozorb concept

The space wraps around the 'Inflozorb' hub. A womb-like, cosy approach.

The organic nature of cob building allows for complete personalisation.

• An illustrated axonometric view.

Open-plan flooring and soft, rounded surfaces make the space safe and easy to use. Which is important for all age groups using the interior.



Unique use of space, as decided by homeowners, such as a conversation pit.

The inflated space acts as a central-hub and a social condenser that brings people together.

Cob design is known for being low impact, very eco-friendly, and cost-effective.

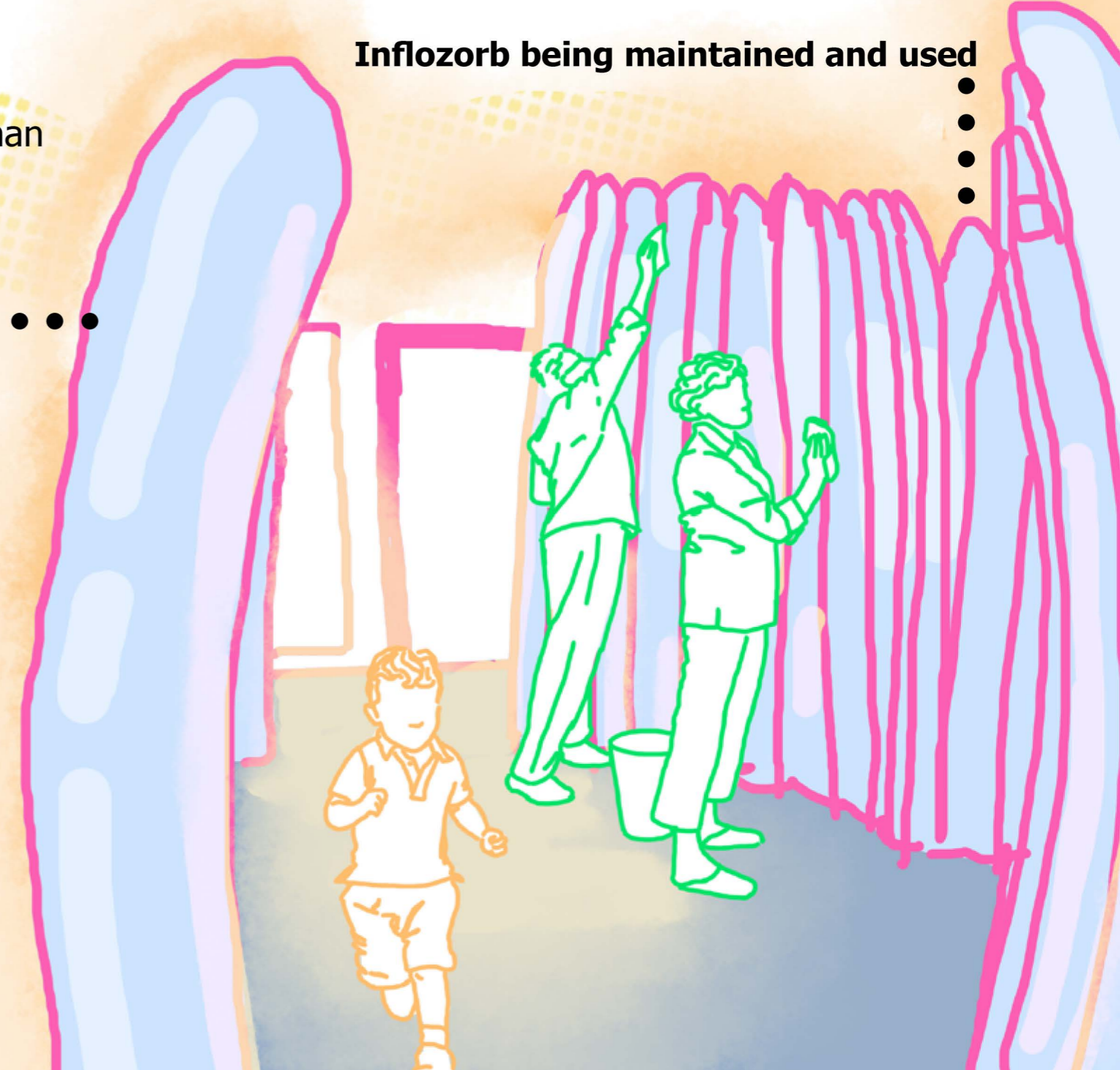
••••• Inflozorb is inflated and sealed, coated in a PVC membrane for strength. It is cheaper than normal home renovations.

••••• It can be cleaned and wiped down due to the materiality, making it easy to maintain.

••••• Soft enough for adults and children alike to bump or fall into the space without harm.

••••• A temporary or permanent space in the home, it is all about agency and choice.

••••• Inflozorb being maintained and used



• Abstraction of the space in use

• The space contextualised at night-time



inflozorb details

Side elevation of Inflozorb in a home setting, with cob-elements.



As the structure is inflatable, it can be moved, placed and secured where desired. It is intended to be surrounded and filled with peoples' own personal belongings and furniture.

Inflozorb enhances the space, through light, sound and innovative design.

Family within Inflozorb.



Positive associations with the light that can be projected onto the space or from within it can help promote well-being.

The spaces warm and inviting nature of the space creates a sense of safety and comfort within.

The insulating and sound-proofing nature is also beneficial as a warm and quiet space can be very helpful for people to rest and relax in.

The space is completely open for people to make their own. The addition of the Inflozorb hub and the organic cob elements are all part of a bigger part of bringing people closer together in a unique way.

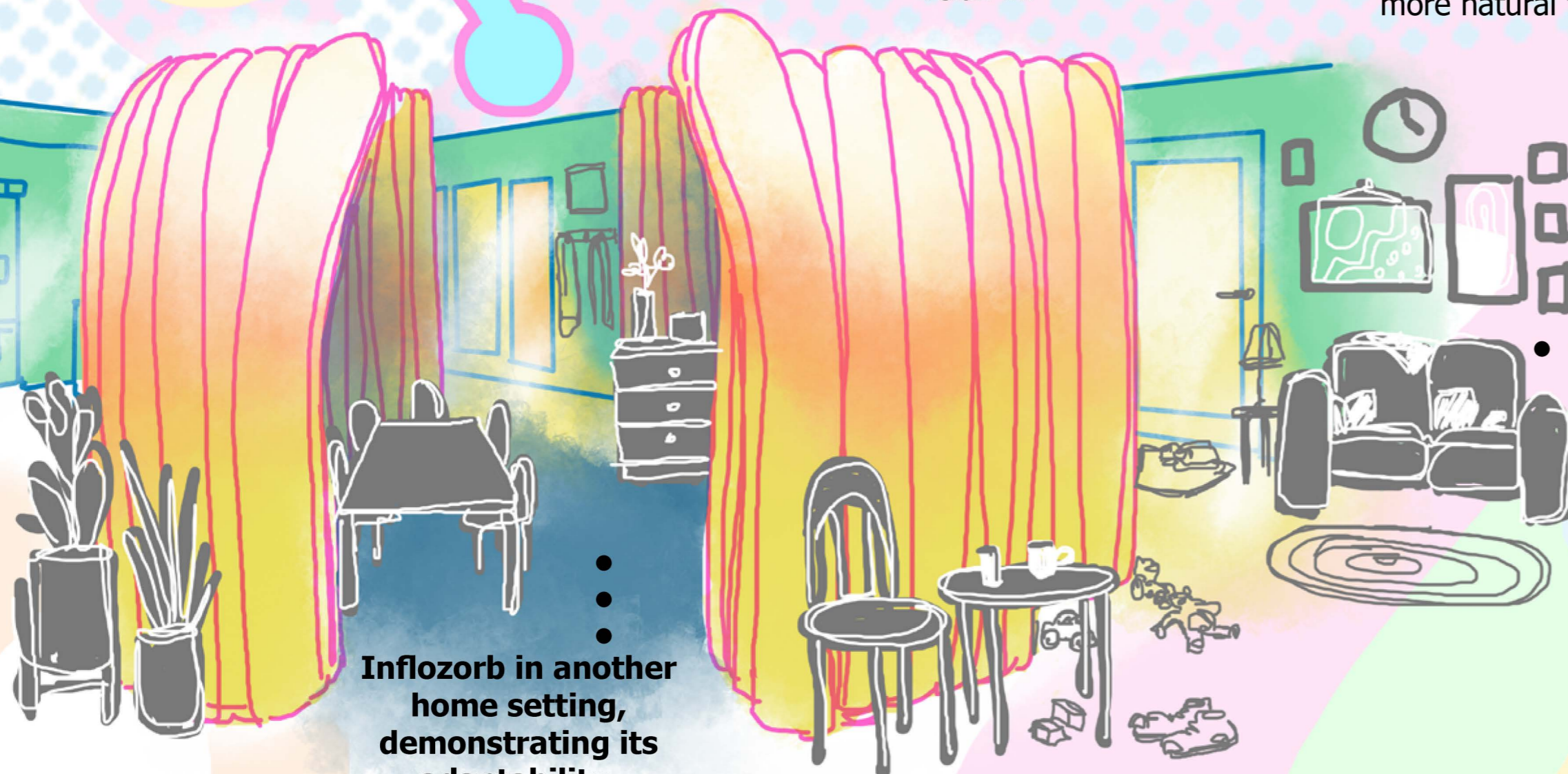
Enhanced by our subliminal desires for more natural forms.

The elements of cob-building within the home are optional with the Inflozorb itself, but when brought together the home can be transformed radically.

Smooth, earthen textures combined with an airy structure can allow for light, air and sound to flow through the home more naturally and cohesively.

Inflozorb is shown in another home setting, showing that it can be put into many different types of homes, and all for peoples' individual reasons and desires. It is easily integrated into the home, with all its quirks and 'mess'.

Inflozorb in another home setting, demonstrating its adaptability.



Feedback on the proposal:

- "The space feels very engaging and fun to be in."
- "I feel that it would be cosy without having to touch anything, to just be in it would be calming."
- "It looks highly child-proof and overall age-proof, I don't see a harsh edge or corner in sight."
- "You could say it looks movable and moldable, which is a fun aspect of the design."
- "A great, colourful way of updating your space. Makes good use of a tactile and reusable resource."

People crafting the space themselves using cob-building methods.

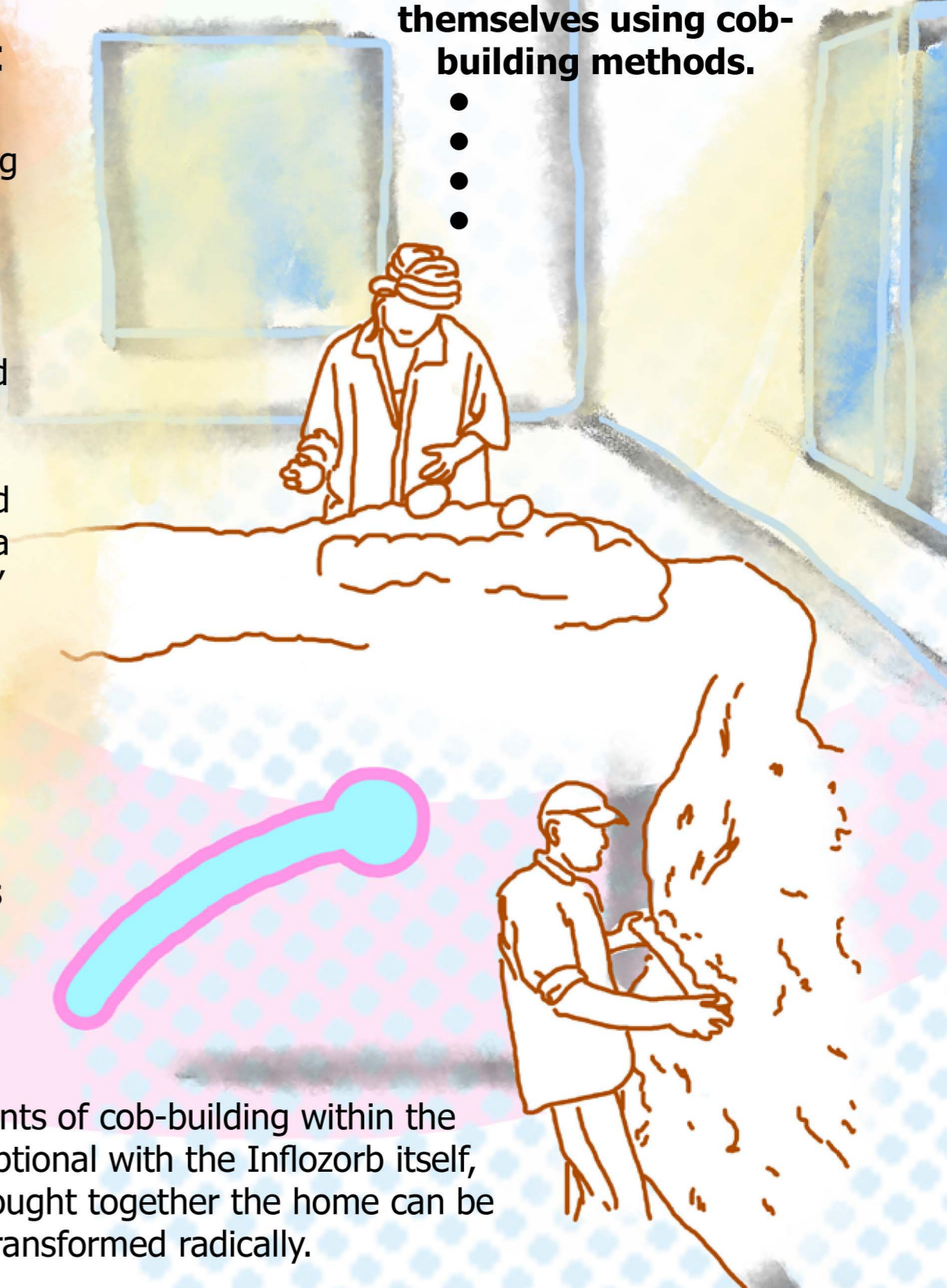


Illustration of Inflozorb.