

[AT-tel]

## Alice; Aiteal

Fiction at interior scale

Spatial language speaks at the same capacity as words. Written word and spatial language are both linguistic modes made up of grammatically organised orthographic lines. When architects draw, they write utopia. Spatial drawings propose a version of the perfect world that is never entirely attainable, and will always function, more or less, as fiction. In this sense, architectural practice is a mode of utopian storytelling. Fiction is not confined to a book cover, and does not necessarily need to be recorded to deserve validation.

Alice 1:20 / Object 1:1

**Aiteal** A very small amount or an overlooked detail.  
Aiteal realises the value of interior scale.

**Freakabana** Eccentric floral arrangement that re-contextualises found objects to create meaning.

*I'm late, I'm late! 1:100*

*If you don't know where you are going, any road will take you there. 1:100*

Section drawing represents fictional scenarios through conventional technical style to evidence the capacity for architectural drawing to tell stories.





2 Wallace Street / 2 Broughty Ferry Road, Wallace Craigie Works (British Listed Buildings, N/A).

The Wallace Craigie Mill was prematurely demolished without consent in 2018 (Historic Environment Scotland, 2023). Listed as a category B heritage site in 1987, Wallace Criage was Dundee's last family owned industrial jute mill corporation. This unfortunate history speaks to an urban narrative of obsolescence. The site was officially abandoned in 2004 and left to rot for eighteen years before illegal intervention by impatient developers (Watson, 2013).

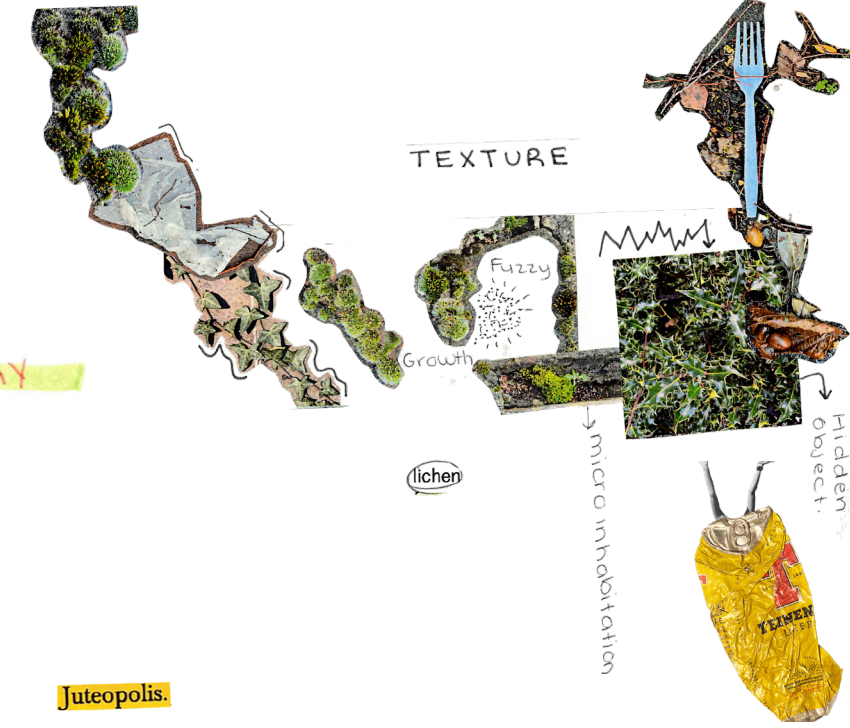
Treating Architecture as a fiction world

smaller fragments. → infinite scale of detail

Looking into ways of study on site!

Go for a walk

Research leads: scales of noticing → beyond visual sensation.



PLAY

Juteopolis.

Utopia

A term coined by Thomas More [1516] through the logic of 'no place'. Utopia is an idea, not a place. Architects are always Utopian thinkers as they work to propose a version of the world that they believe should be. The extent to which architectural drawing translates into reality is relative but never complete.

Thinking about Wallace Craigie as Utopia.

Dundee's history described as "dropped by from the sky by a demented pigeon." (page 86 – Lost Dundee)

buildings,

of slowing down

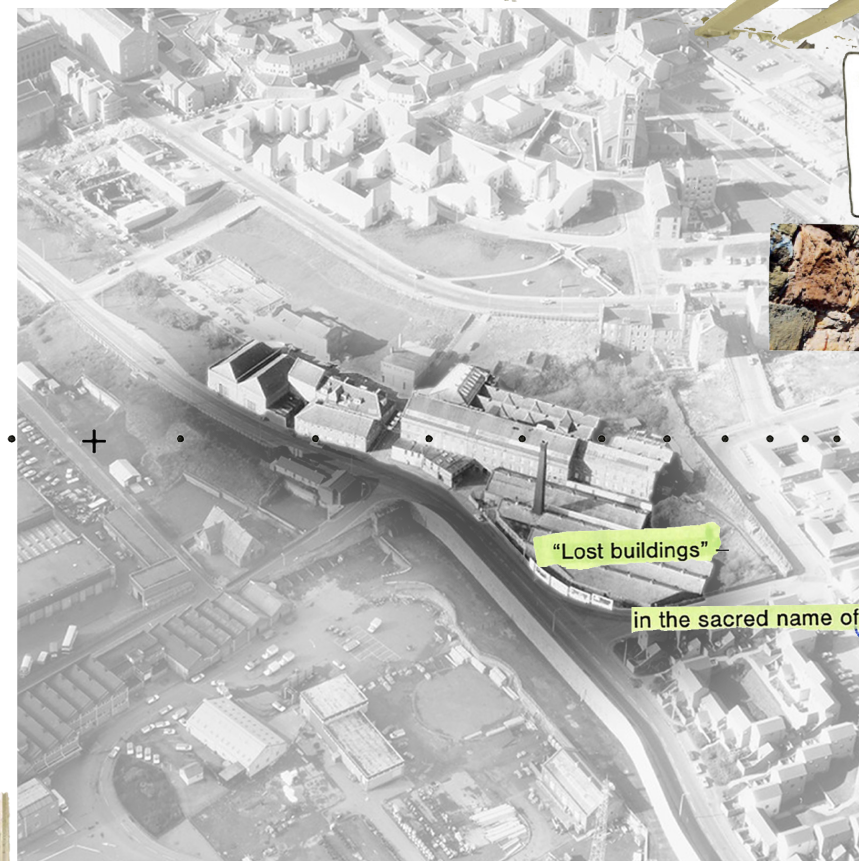
Alice; Aiteal leans into a fictional realm to explore the capacity for architectural language to represent fiction. Alice is an iconic token of whimsy and the imaginative potential for storytelling. In the first chapter of Alice in Wonderland, Alice shrinks to the object scale of Aiteal to enhance the concentration of interior matters. Wallace Craigie serves as a kind of Wonderland and while this seems ironic, it reflects the value of abandoned spaces to facilitate creative possibilities. The realistic scope of the project is constrained by restricted access and non-existence. Thus, Alice; Aiteal treats Wallace Criage as an archaeological site and searches for value in discarded objects and industrial traces through the manner of Aiteal. The pre-mature demolition of Wallace Criage Mill reflects the conventional narrative of urban development motivated by a genuine belief that accelerated change engineers' advancement. In this sense, the aim is unproductive play of abandoned space.

a rhythm of study led through intimate details, interaction, consideration. of "composed"

what does it mean to remove the pressure of the site to become anything?

study of the interior scale

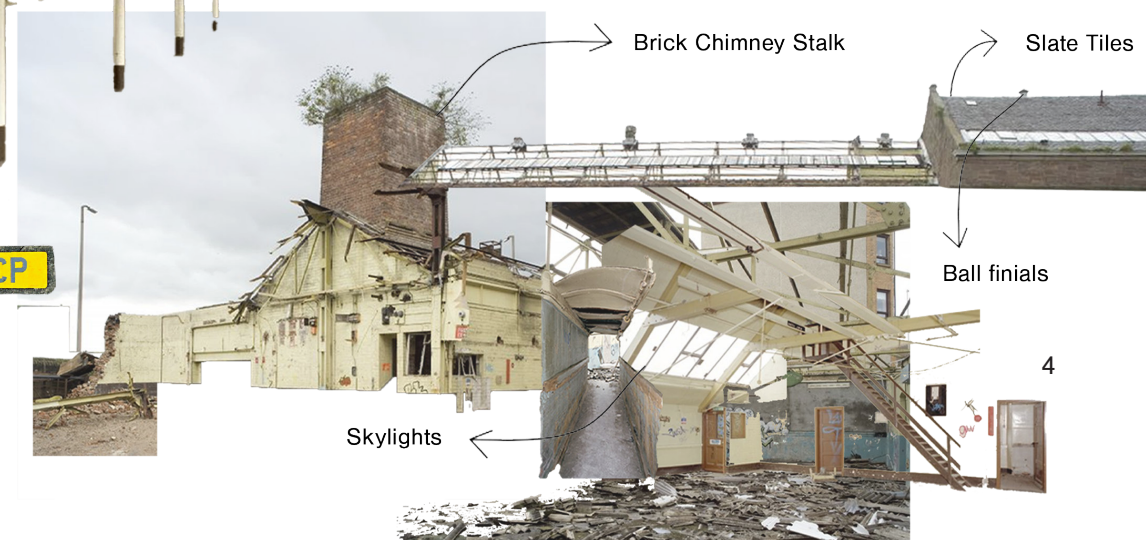
1988



"Lost buildings"

in the sacred name of "progress." slow down.

Cast-iron Columns



Brick Chimney Stalk

Slate Tiles

Ball finials

Skylights

4

