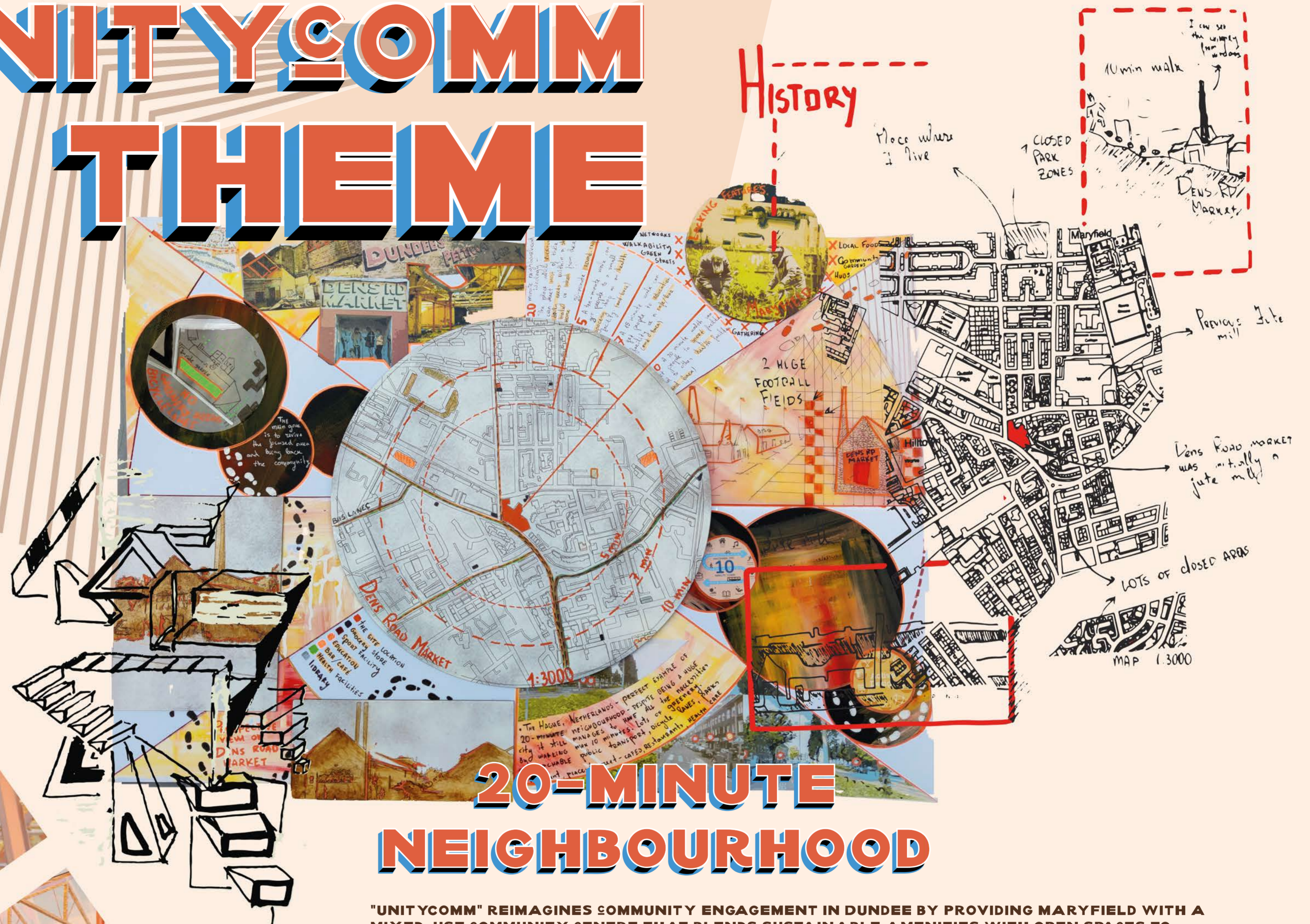


UNITYCOMM THEME



20-MINUTE NEIGHBOURHOOD

"UNITYCOMM" REIMAGINES COMMUNITY ENGAGEMENT IN DUNDEE BY PROVIDING MARYFIELD WITH A MIXED-USE COMMUNITY CENTRE THAT BLENDS SUSTAINABLE AMENITIES WITH OPEN SPACES TO ENCOURAGE WALKING AND ENGAGEMENT. INSPIRED BY COMMUNITY NEEDS, THE DESIGN SYMBOLIZES INTERACTION WITH THE MOVEMENT OF INTERLOCKING HANDS AND FEATURES THREE ZONES: INITIATION, CONNECTION, AND UNITY.

THIS PROJECT DEMONSTRATES COLLABORATION ACROSS DISCIPLINES AND INSTITUTIONS, USING INNOVATIVE WAYS TO SHARE IDEAS. A CO-DESIGN TOOL, COMMUNITY ENGAGEMENT, AND AN ARCHITECT INTERVIEW WERE CRUCIAL IN SHAPING THE FINAL DESIGN. INSPIRED BY THE 20-MINUTE NEIGHBOURHOOD IDEOLOGY, UNITYCOMM PROMOTES LOCAL LIVING AND REIGNITES THE NEIGHBOURHOOD ALLOWING RESIDENTS TO REACH ALL BASIC FACILITIES WITHIN A 20-MINUTE WALK THERE AND BACK AND INTERACT BETWEEN EACH OTHER.

COMMUNITY COLLABORATION THROUGHOUT DESIGN PROCESS



CASE STUDIES

MERIDIAN VILLAGE DA, CLYDE NORTH, MELBOURNE, AUSTRALIA

MERIDIAN VILLAGE REIMAGINES SUBURBAN SHOPPING WITH AN OPEN-AIR LAYOUT, BLENDING RETAIL, COMMERCIAL, AND ENTERTAINMENT SPACES IN A VIBRANT PUBLIC PLAZA THAT FOSTERS COMMUNITY CONNECTIONS AND REFLECTS CLYDE NORTH'S HERITAGE.



MENZIESHILL COMMUNITY HUB DUNDEE, UNITED KINGDOM

MENZIESHILL'S RENEWAL, GUIDED BY HOLMES MILLER AND THE COUNCIL, REIMAGINES ITS CENTER WITH A REVAMPED COMMUNITY HUB. THE NEW HUB FEATURES A COMMUNITY GARDEN AND A LIBRARY OFFERING DIGITAL LITERACY COURSES, REFLECTING THE NEIGHBORHOOD'S REVIVED SENSE OF COMMUNITY.



SOS CHILDREN'S VILLAGE LAVEZZORIO COMMUNITY CENTER, CHICAGO, USA

THE LAVEZZORIO COMMUNITY CENTER BLENDS SOCIAL SERVICES AND NEIGHBORHOOD RESOURCES FOR SOS CHILDREN'S VILLAGE CHICAGO. DAYCARE CLASSROOMS AND COMMUNITY ROOMS FILL THE NATURALLY LIT INTERIOR, WITH A UNIQUE STRUCTURAL STAIR CONNECTING LEVELS. LOCALS PLAYED A KEY ROLE IN SHAPING THE HUB TO MEET COMMUNITY NEEDS.



SITE

DENS ROAD MARKET, A SIGNIFICANT 4100 M2 BUILDING, BEGAN ITS JOURNEY IN 1855 AS A WEAVING FACTORY IN DUNDEE'S MARYFIELD AND HILLTOWN AREAS. OVER TIME, IT TRANSFORMED INTO A LIVELY MARKETPLACE WHERE LOCALS GATHERED FOR COMMUNITY AND SECOND-HAND TREASURES. SADLY, DECLINING INTEREST LED TO CLOSURE IN 2013, LEAVING BEHIND REMNANTS OF ITS INDUSTRIAL PAST.

https://drive.google.com/file/d/1a-JRzcGYqZ0-nds1ljzx2oXAgchl_04j/view



COMMUNITY COLLABORATION IS CRUCIAL IN THE DESIGN PROCESS, MAKING SURE EVERYONE FEELS INCLUDED AND VALUED. AT DENS ROAD MARKET, THIS TEAMWORK IS SHOWN THROUGH THE SYMBOLIC HAND INTERLOCKING MOVEMENTS, WHICH STAND FOR UNITY AND SHARED GOALS.

BY LOOKING AT CASE STUDIES OF SUCCESSFUL COMMUNITY HUBS, WE LEARNED HOW TO CREATE SPACES THAT MEET LOCAL NEEDS. TALKING DIRECTLY WITH THE COMMUNITY, INTERVIEWING AN ARCHITECT, AND USING CO-DESIGN TOOLS IT HELPED GATHER EVERYONE'S IDEAS.

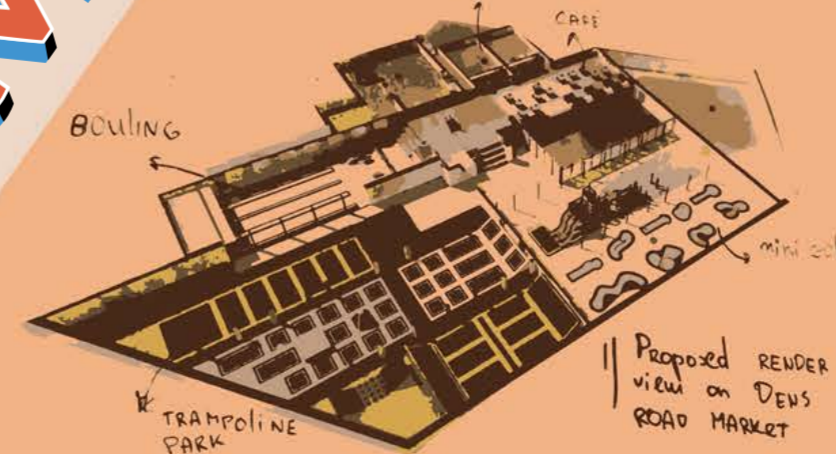
THIS WAY, THE REDESIGN OF THE MARKET REFLECTS WHAT THE COMMUNITY WANTS. THE TRANSFORMATION OF DENS ROAD MARKET IS MORE THAN JUST A PHYSICAL CHANGE:

"IT'S ABOUT BUILDING STRONGER SOCIAL CONNECTIONS"

THIS APPROACH MAKES SURE THE NEW MARKET BECOMES A LIVELY, USEFUL, AND CHERISHED COMMUNITY HUB, INSPIRED BY OTHER SUCCESSFUL PROJECTS AND SETTING A NEW EXAMPLE FOR COLLABORATIVE URBAN PLANNING.



INTERVIEW



INTERVIEW WITH FRASER MIDDLETON - LEAD OF ARKTX SHARED ARCHITECTS.

THE PLAN WAS TO BUILD THE CHILDREN ADVENTURE PARK (IN 2013 THERE WAS NONE) THE PROPOSAL KEPT INITIAL BEAMS OF THE BUILDING AND THE END RESULT WAS MIMING THE INITIAL FORMS OF THE BUILDING HOWEVER THE MAJORITY OF THE BUILDING WAS



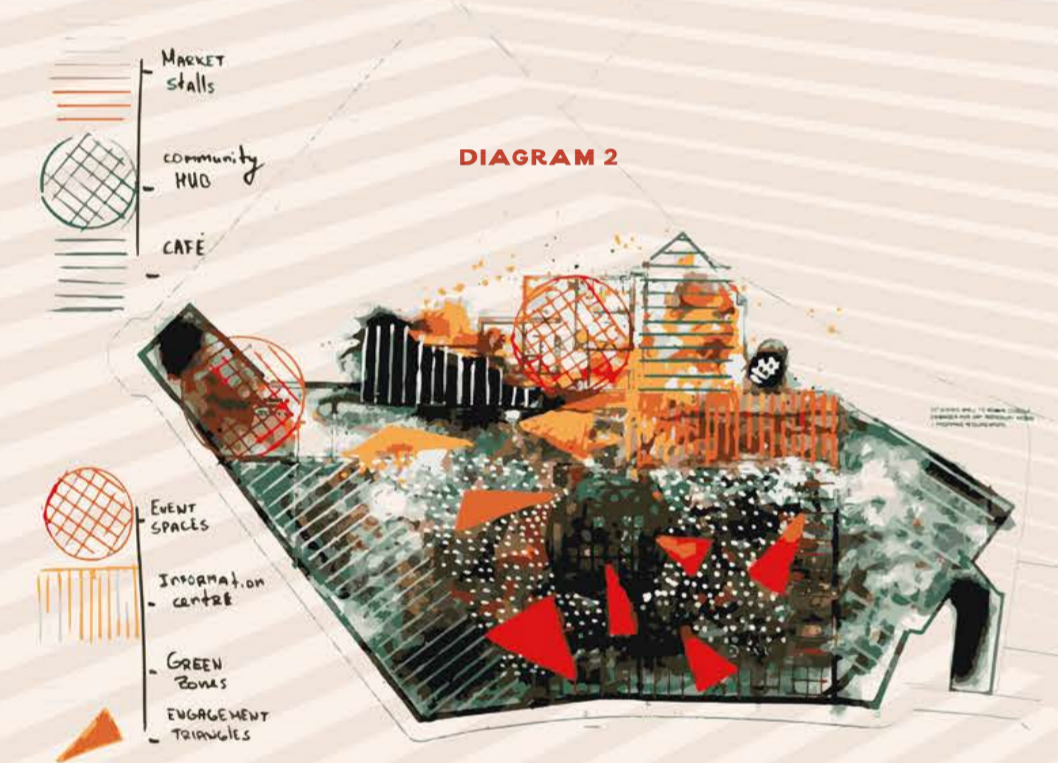
PROCESS



THROUGH SKETCH MODEL MAKING MULTIPLE INSIGHTS WERE GAINED. ALL TOGETHER 10 MODELS WERE MADE WERE THE MAIN FOCUS WAS ON EXPLORING SHAPES AND FORMS TO DISCOVER NEW POSSIBILITIES OF THE SPACE AND CREATE NEW INSIGHTS.



FOR THE MAIN THEME OF THE MODELS BECAME THE MOVEMENT OF HANDS. BY EXPLORING THE MOVEMENT OF INTERLOCKING HANDS I DELVED INTO MEANING OF THE WORD SUPPORT AND HOW IT CAN BE DEPICTED IN REAL LIFE.



MULTIPLE ZONING DIAGRAMS WERE DRAWN INSPIRED BY CO-DESIGN TASK INSIGHTS AND SKETCH MODEL MAKING. ONE ZONING DIAGRAM BECAME THE FINAL LAYOUT OF THE PROJECT AND IT IS DIAGRAM NUMBER 3



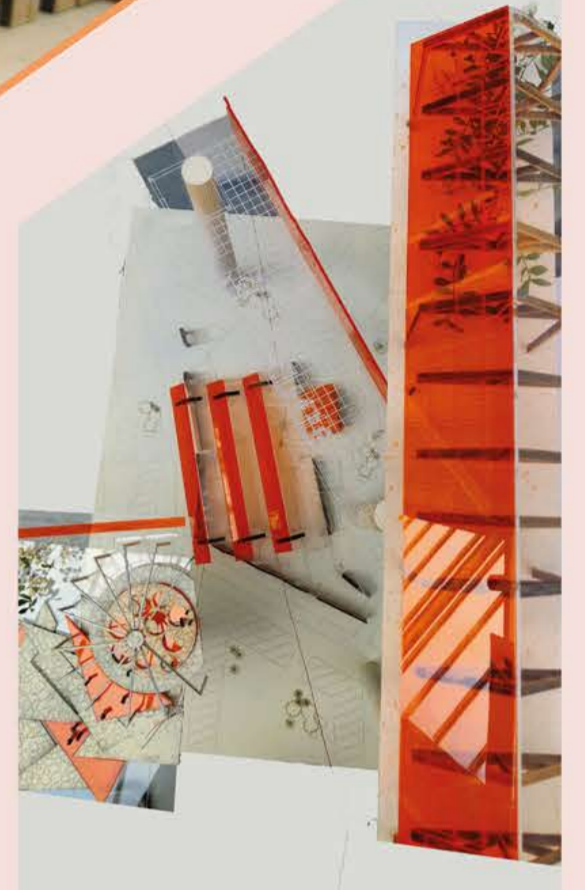
MODELS WERE ALSO EXPLORING THE INITIAL BUILDING STRUCTURES WITH THE MAIN FOCUS ON IRON BEAMS AS IT IS CONSIDERED TO BE THE MAIN SUPPORT ELEMENT OF THE BUILDING



SKETCH MODELS



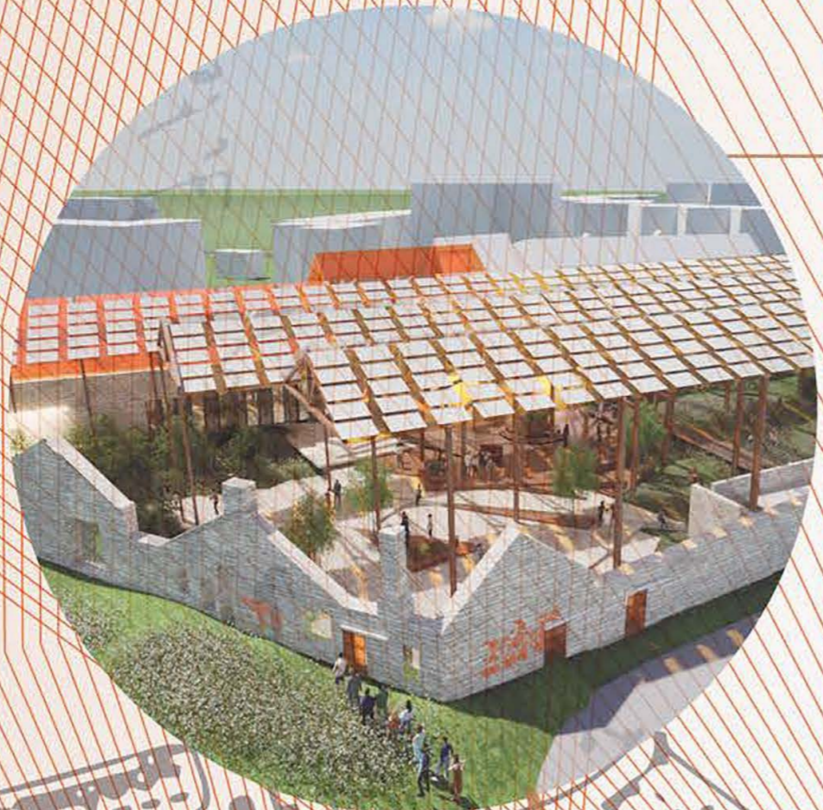
THE FINAL SCALE MODEL COMPRISES FOUR DISTINCT PARTS EACH SERVING A SPECIFIC PURPOSE. FIRSTLY, THE BASE REPRESENTS A 1:200 SCALE MODEL OF THE ENTIRE BUILDING STRUCTURE, WITH A PARTICULAR EMPHASIS ON SHOWCASING THE ELEVATED ROOFS. MOVING UPWARDS, THE NEXT COMPONENT IS A 1:100 SCALE REPRESENTATION OF THE PROPOSED STEPS DESIGN. ABOVE THIS, WE FIND A 1:100 SCALE MODEL DEPICTING THE INITIATION ZONE, HOUSING A CAFE/RESTAURANT AND INITIATION CENTER. FINALLY, THE TALLEST PIECE OF THE MODEL IS A 1:100 SCALE REPRESENTATION OF ONE OF THE ROOF STRUCTURES, INTENDED TO ILLUSTRATE ITS CONSTRUCTION AND THE POTENTIAL ADDITION OF TRANSLUCENT ROOFING MATERIALS.



SOLAR PANELS

UNITY STEPS

GATHERING POINT



INITIATION DESK

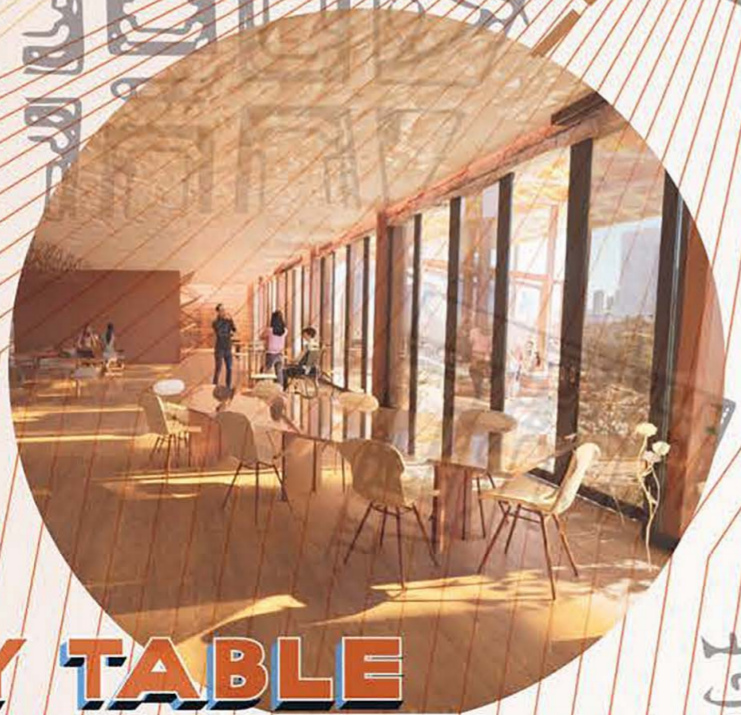
FINAL RESULT



<https://drive.google.com/file/d/1QOuTwB5W-jnnE-NRYIROTOfvF2QIPy/view>



INITIATION OFFICE



COMMUNITY TABLE

2 HUGE FOOTBALL FIELDS



COMMUNITY RESTAURANT



SAFE

