

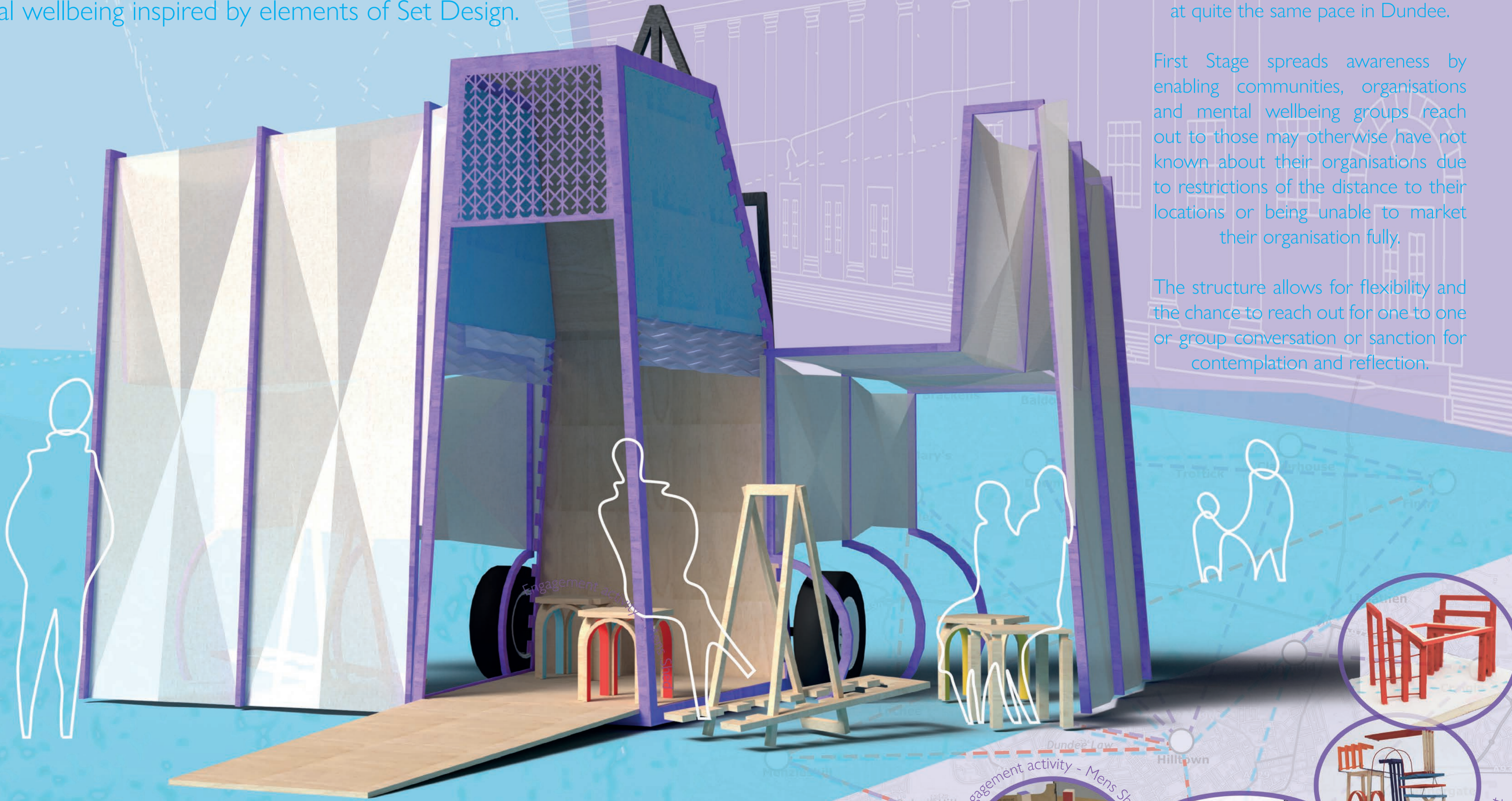
FIRST STAGE

A transportable structure acting as a pre-emptive first stage encouraging awareness of mental wellbeing inspired by elements of Set Design.

Awareness of mental health challenges has risen over recent years, however accessibility and awareness to resources and spaces to find help have not moved at quite the same pace in Dundee.

First Stage spreads awareness by enabling communities, organisations and mental wellbeing groups reach out to those may otherwise have not known about their organisations due to restrictions of the distance to their locations or being unable to market their organisation fully.

The structure allows for flexibility and the chance to reach out for one to one or group conversation or sanction for contemplation and reflection.



This structure aims to bring together a safe community using elements from set design to act as a pre-emptive space which travels around Dundee as a first stage of self-help to wellbeing.



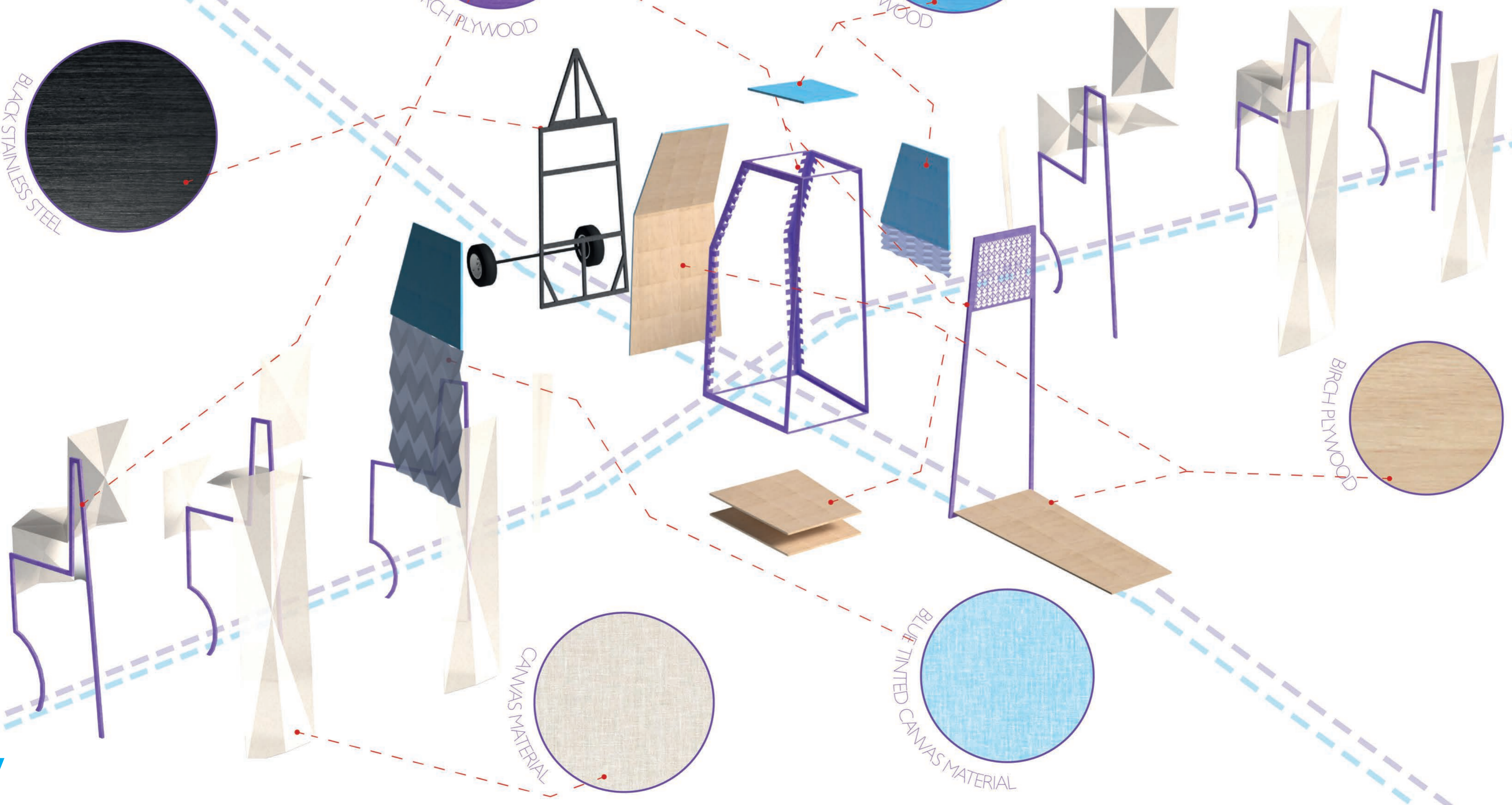
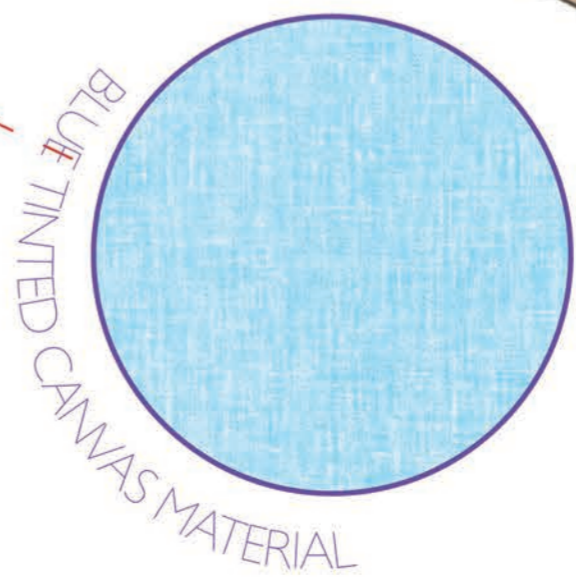
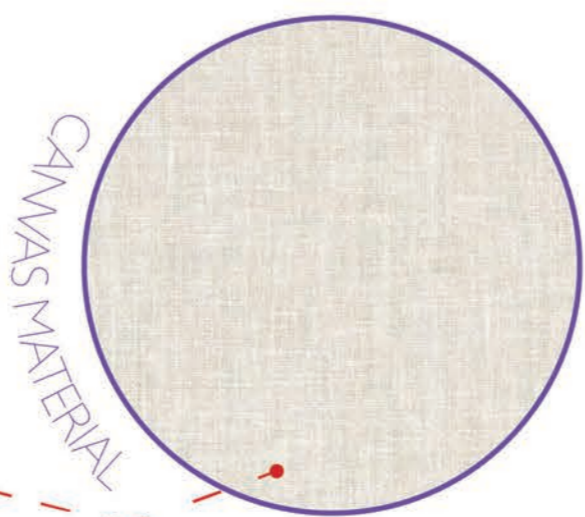
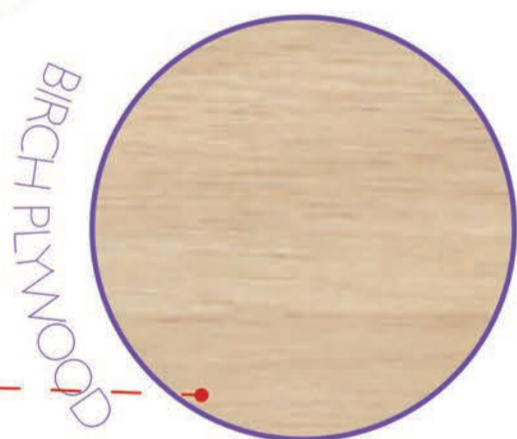
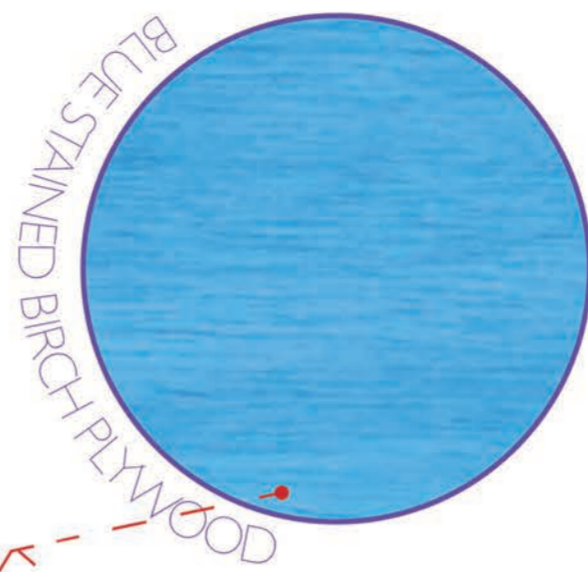
C
A
I
R
D
H
A
L
L

C
O
N
C
E
P
T

WELL BEING



EXPLODED VIEW





PROCESS VIDEO

P
R
O
C
E
S
S

