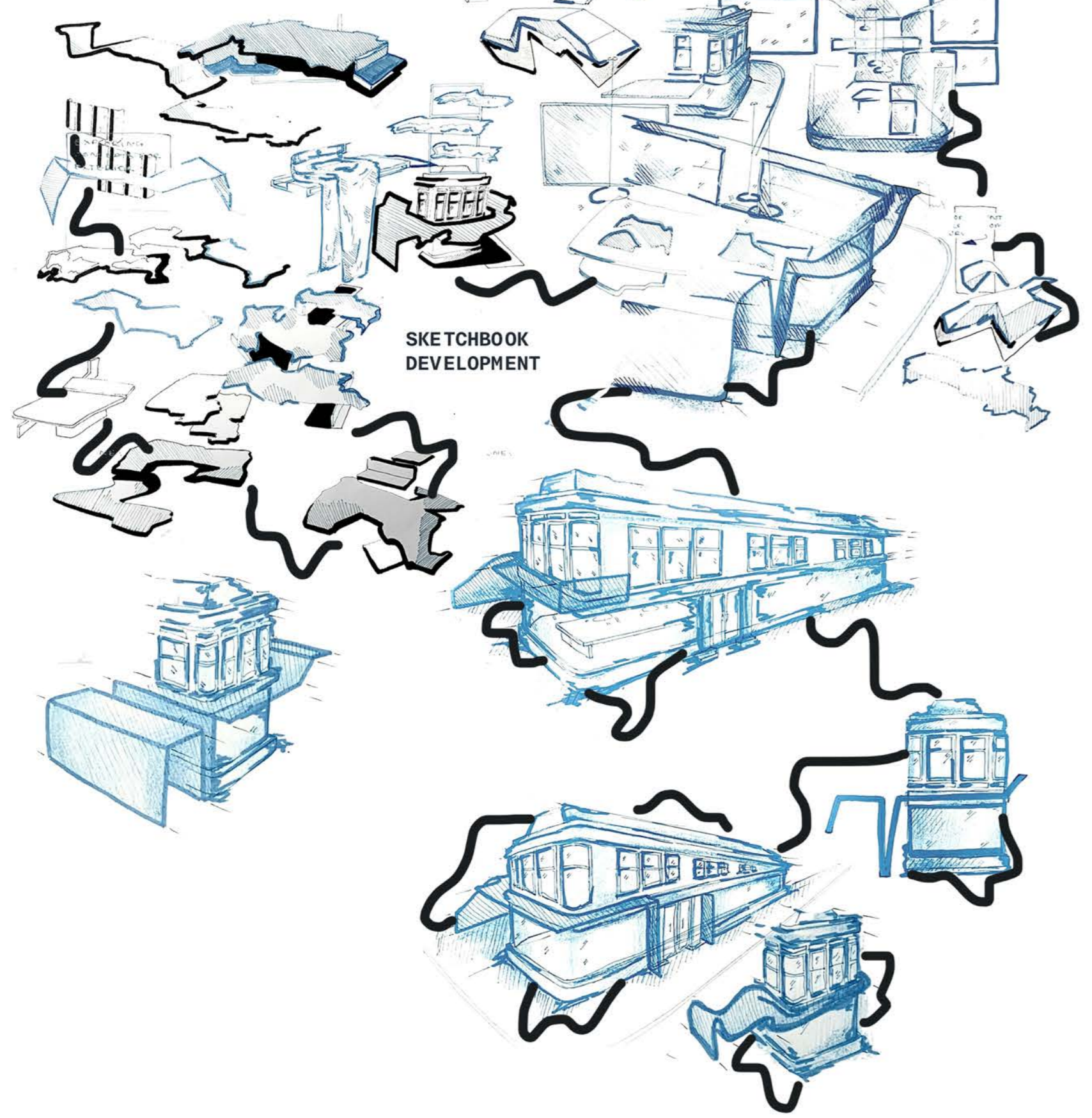


**SITE LOCATION**  
49-65  
TRADES LN,  
DUNDEE  
DD1 3EW

**EXISTING SITE**



49-65 Trades Lane was built in 1910 and was constructed during the Edwardian period. It is over 100 years old though its ageless characteristics allowed for visual interest that supported the concept of a timeless space.



### INITIAL RESEARCH/CONCEPT BOARD



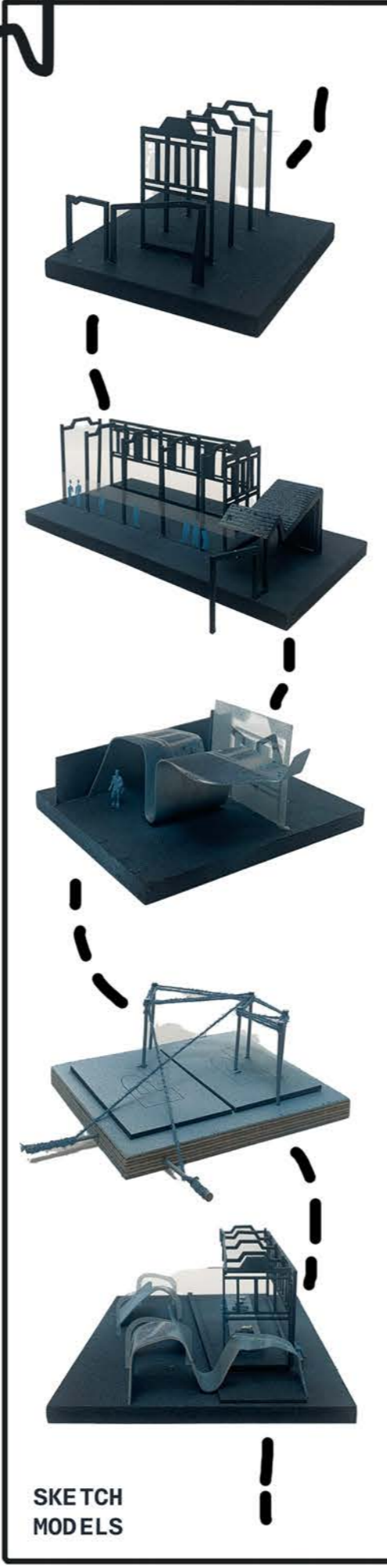
**STAFF AREA**  
**CLOTHING REPAIR AREA**  
**TOILETS**  
**FITTING ROOMS**  
**STORAGE ROOM**  
**CHECKOUT COUNTER**  
**EXHIBITION DISPLAY TABLE**

**STRUCTURAL LIGHTING**

**PLAN VIEW:**

**EXTERIOR TUNNEL EXTENTION**

**EXTERIOR VIEW:**

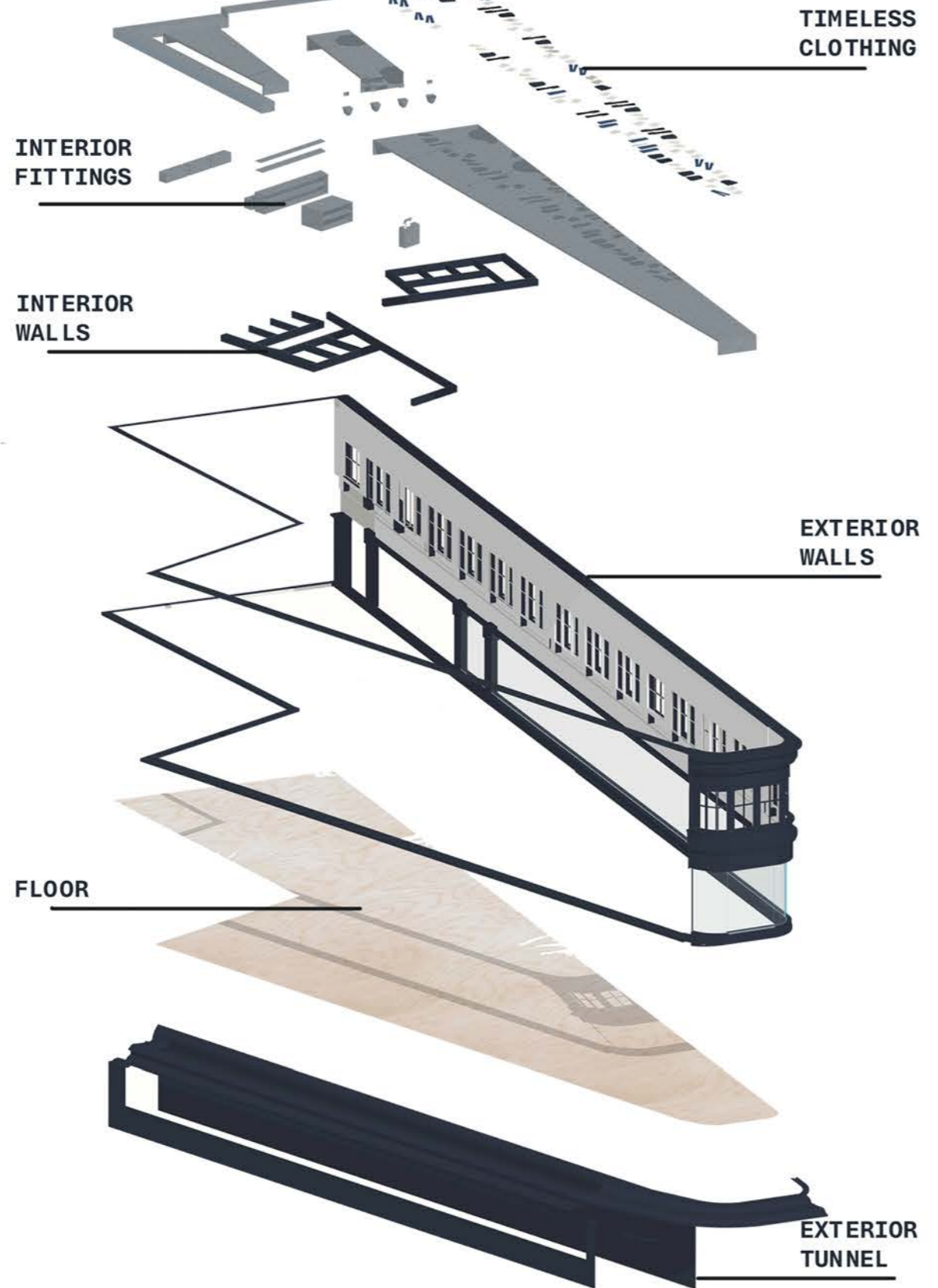
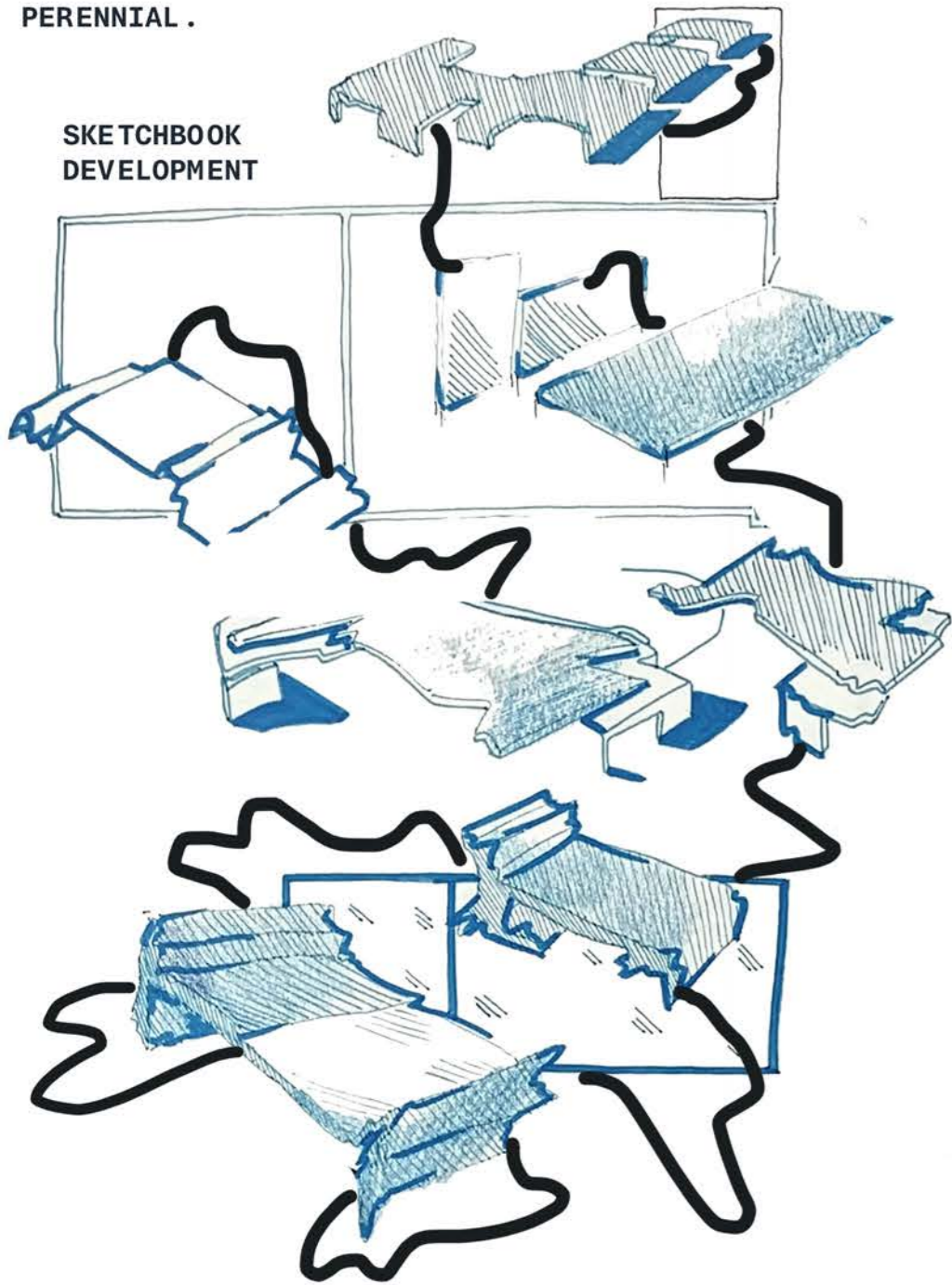


### INTERACTIVE CO-DESIGN TOOL

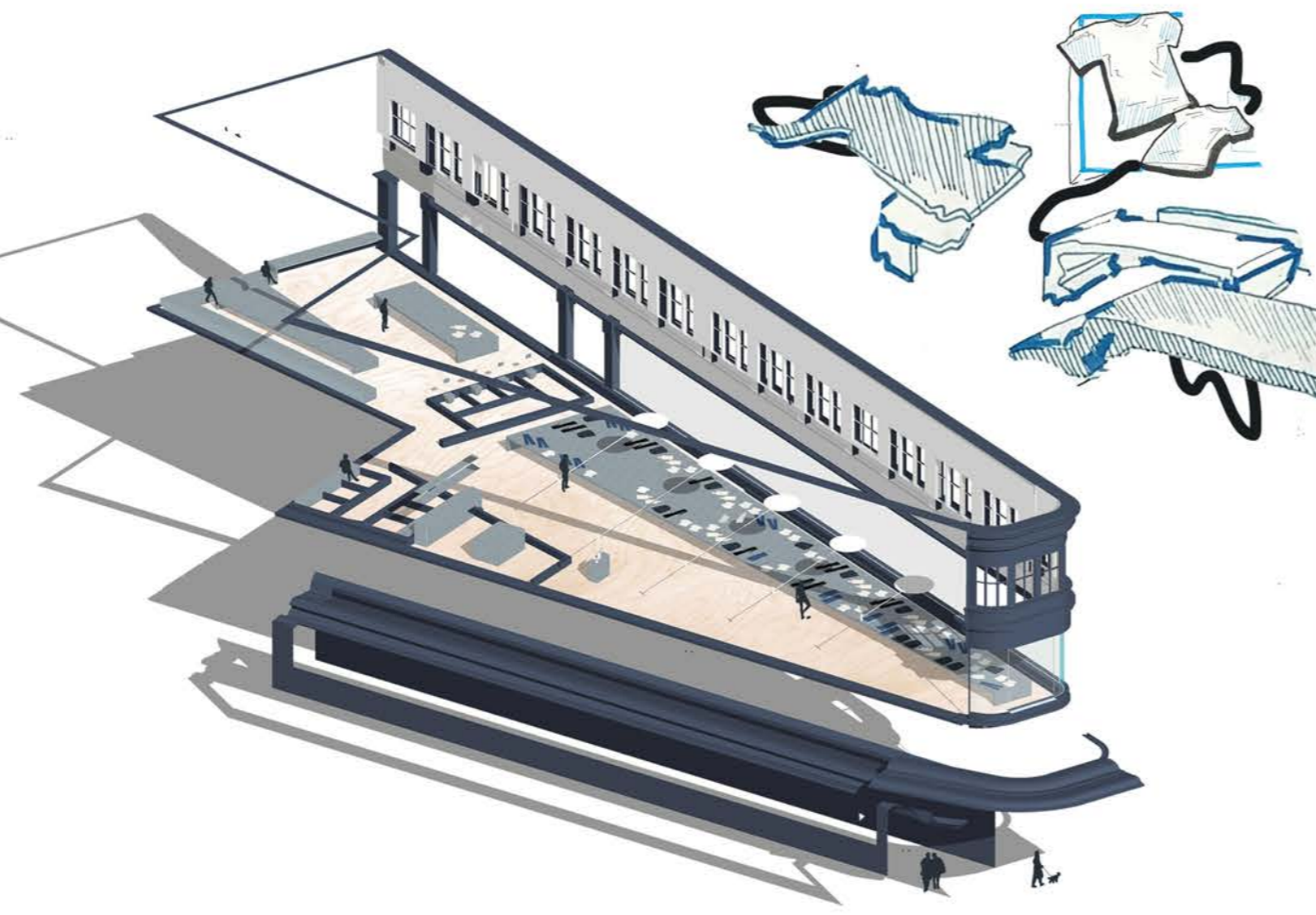


A co-design tool was created in order to enhance the design concept through the opinions of the public. This was done by creating a set of t-shirts that all had a question on the tag. The answers could then be written on another tag that was dropped inside of the corresponding t-shirt. This allowed for further insight and perspective on the concept of timelessness.

SKETCHBOOK  
DEVELOPMENT



EXPLODED VIEW



PARTIAL EXPLODED VIEW



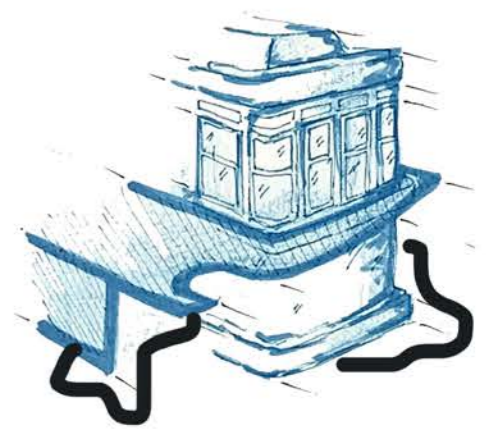
CLOTHING REPAIR/ STAFF AREA



VIEW OF WALKWAY BETWEEN AREAS



VIEW OF MAIN EXHIBITION SPACE



FINAL SCALE MODEL

