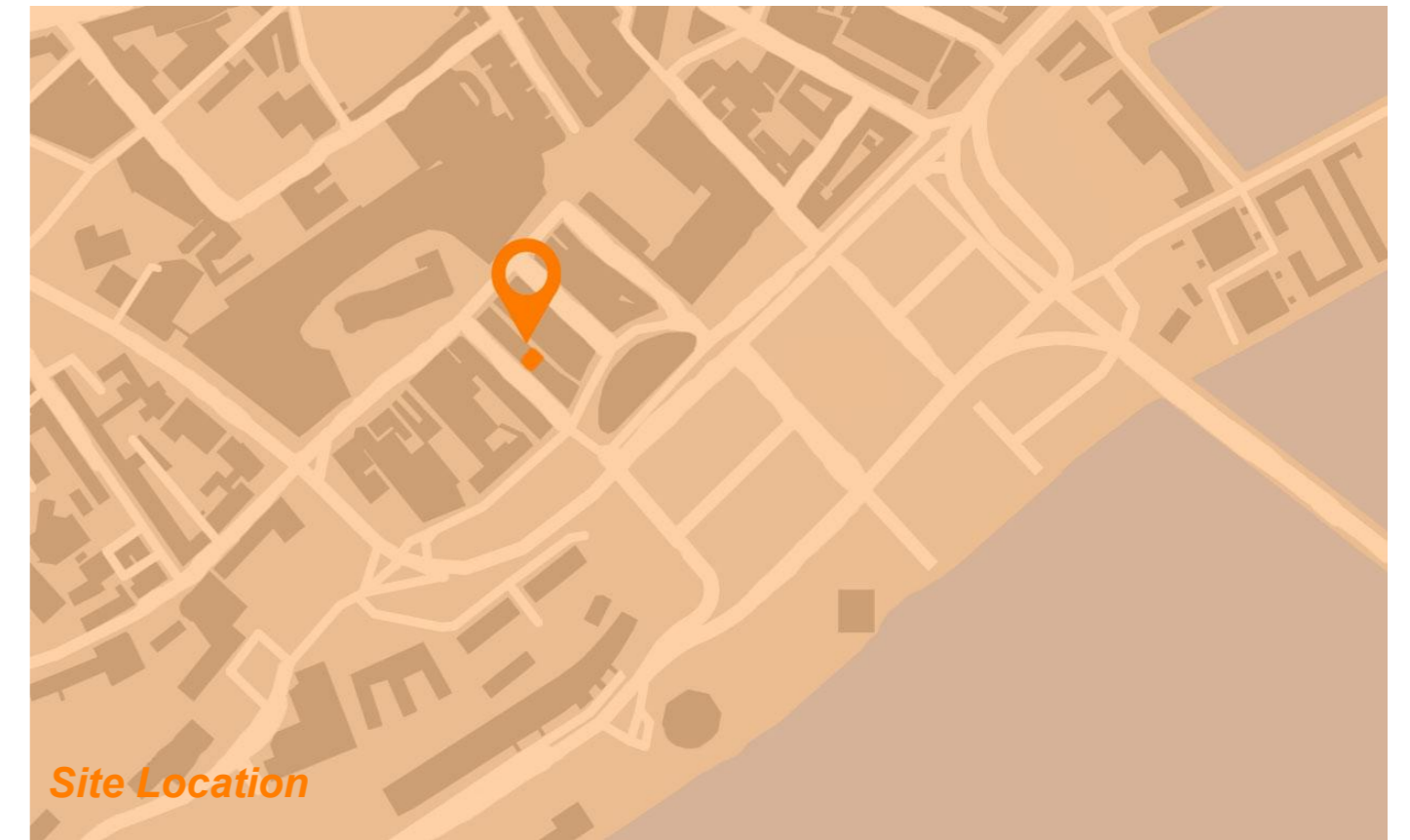
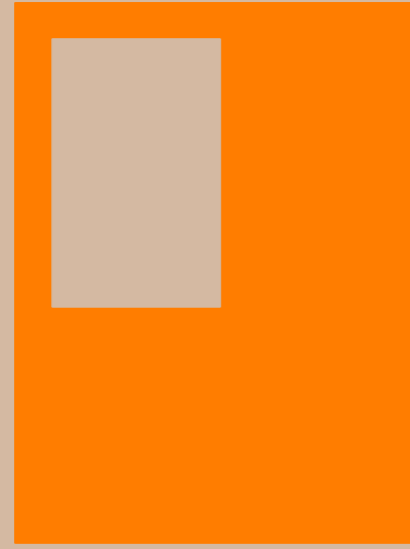
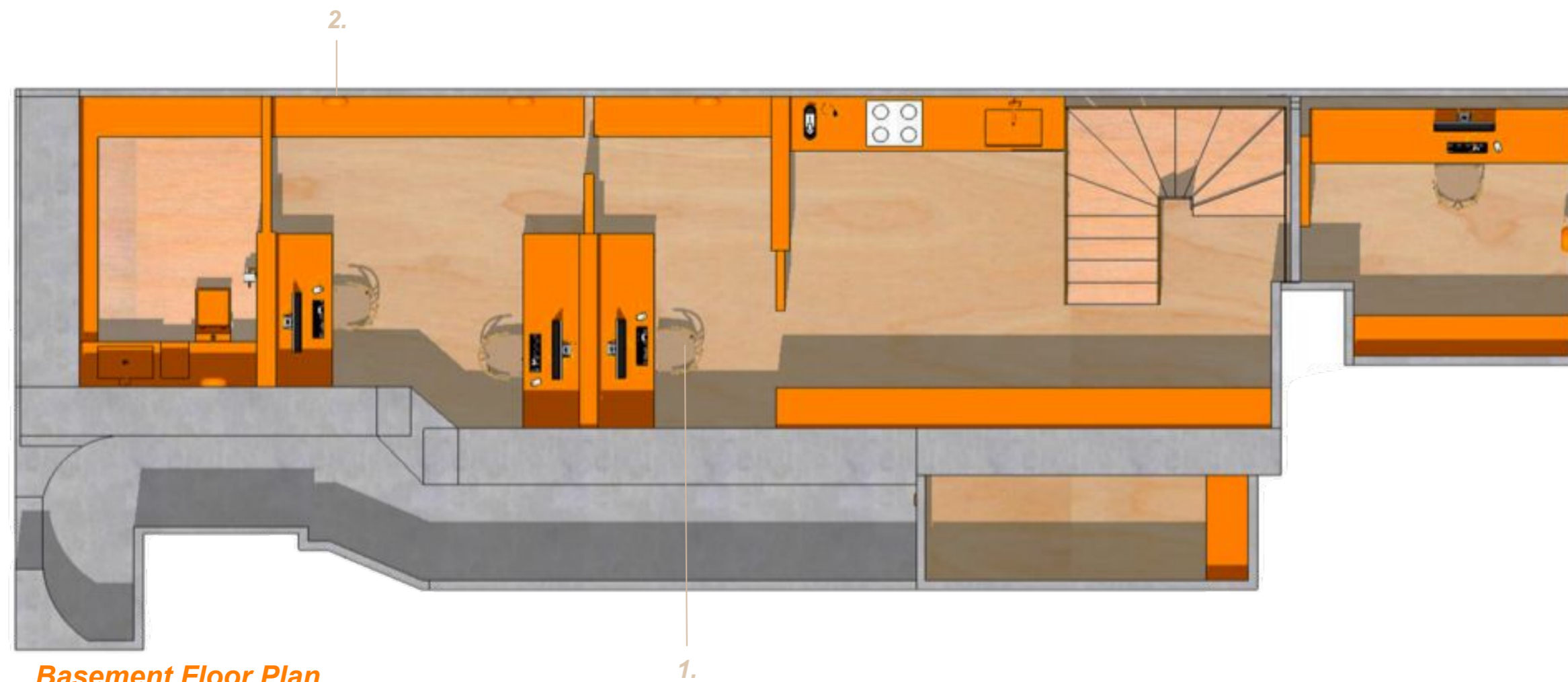


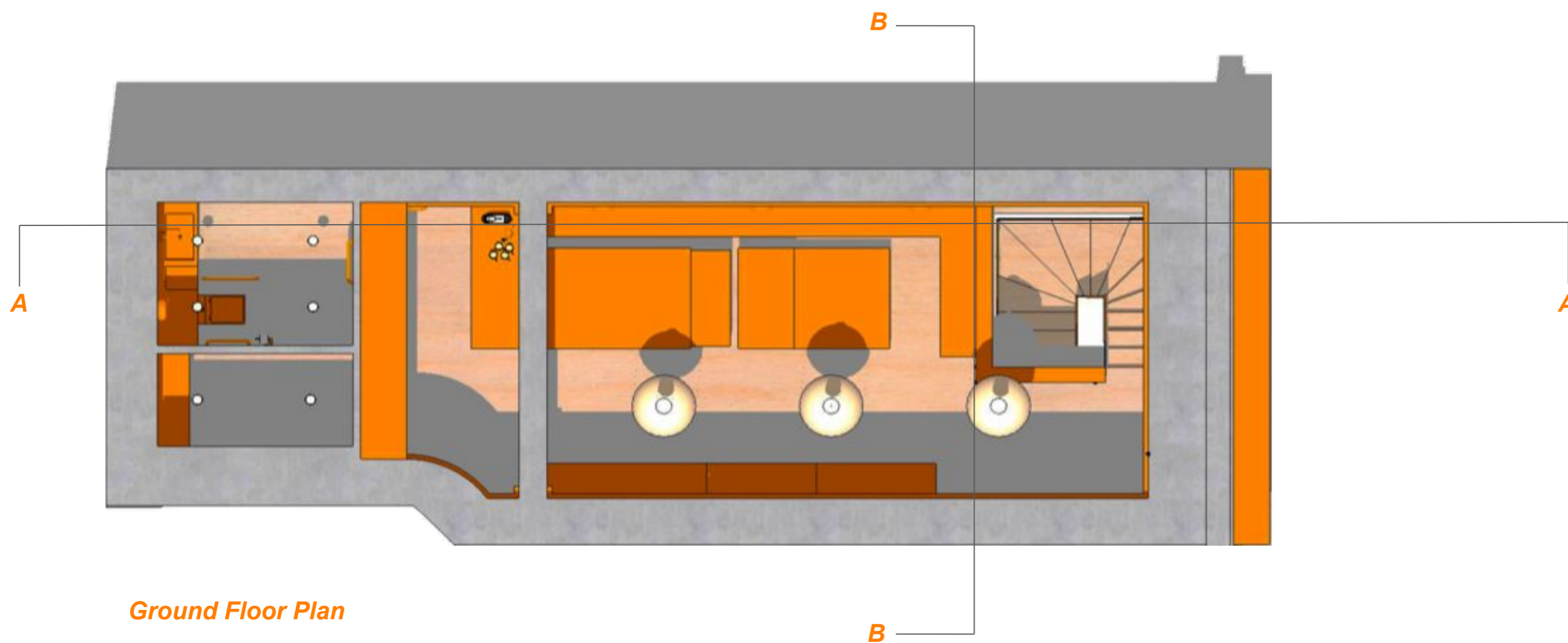
DUNDEE DESIGN HOUSE



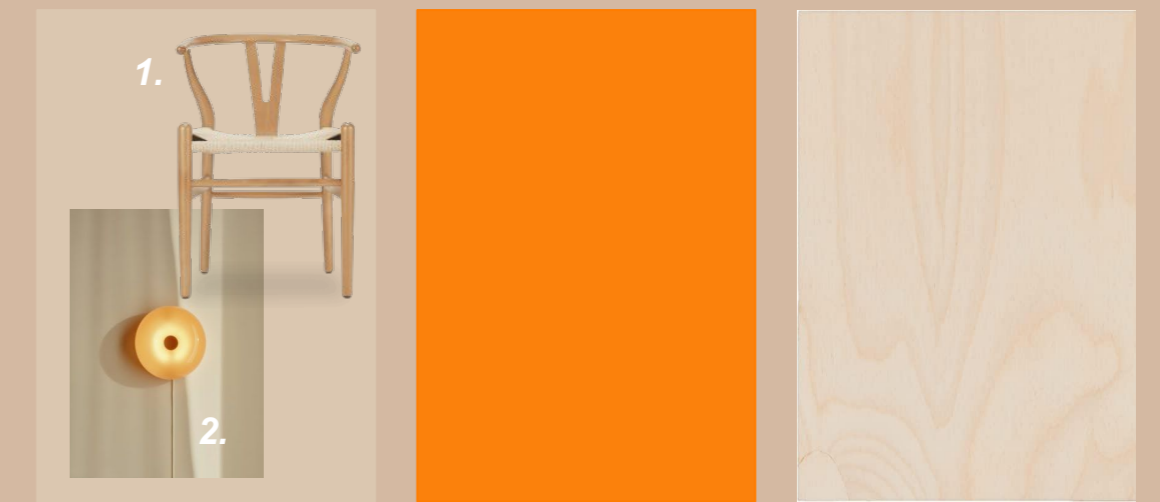
Site Location



Basement Floor Plan



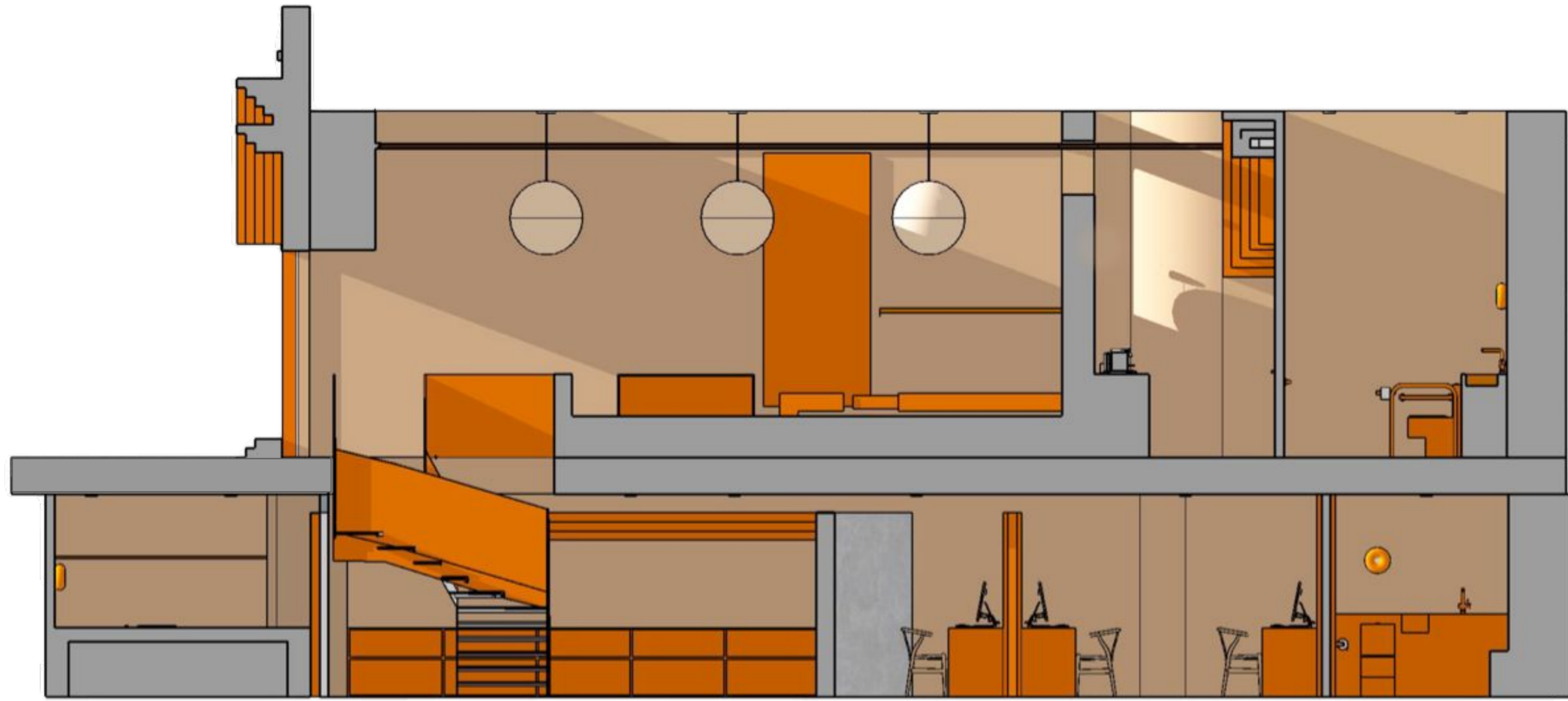
Ground Floor Plan



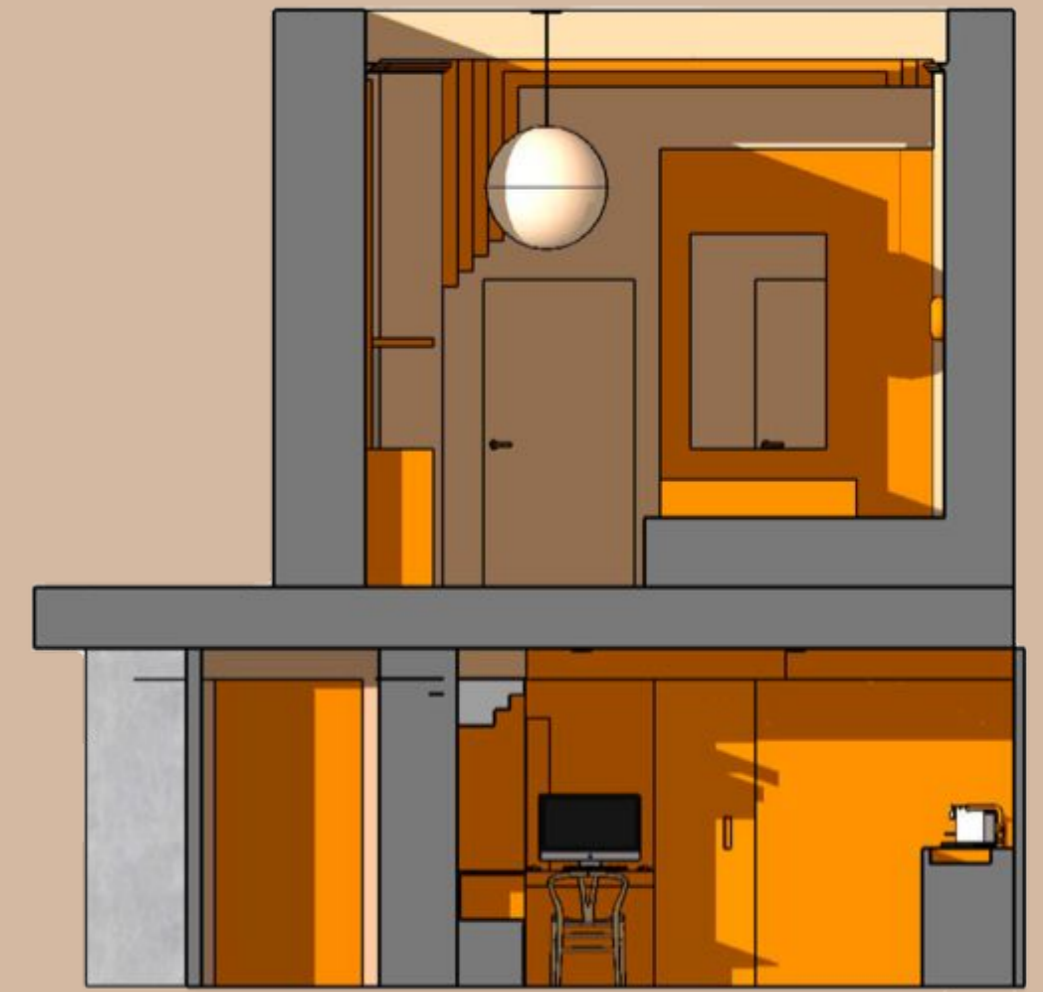
MFP

I have focused on a part of the existing structure that had the most history and character - the cornicing. This design simplifies the ornate details seen in traditional cornicing and transforms them into new modernised forms utilising orange resin as a material. These custom resin casted furniture pieces conjoin to create a functional and intriguing interior space, which includes an office and staff area as well as a space for an extendable meeting/coffee table for both important discussion and casual conversation. As this is a design focused space, using the colour orange seemed appropriate as it promotes creativity, while also being one of the UNESCO brand colours. This space aims to encourage visitors to think about Dundee's key role as a UNESCO City of Design.

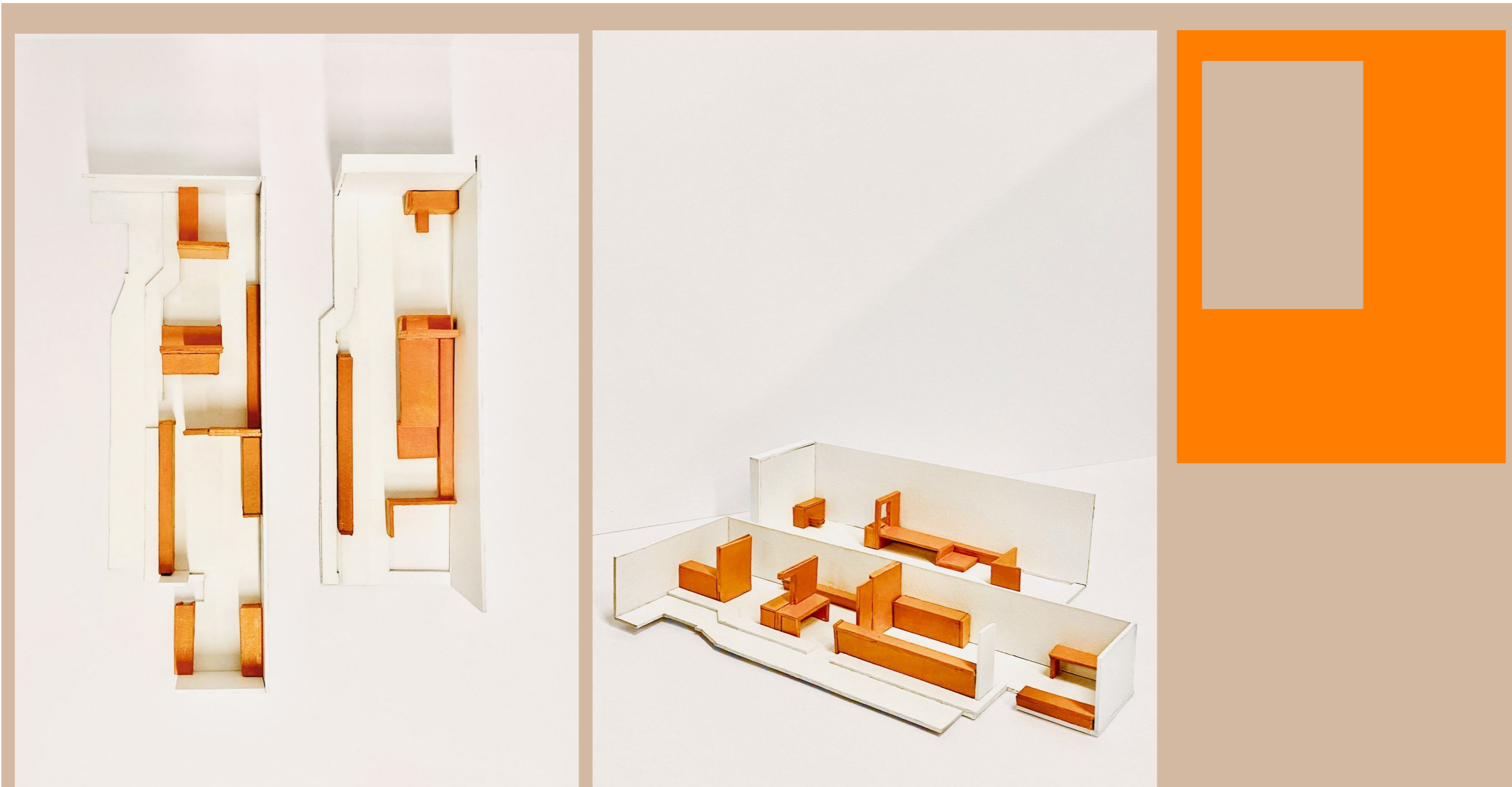
This submission is for the Craft and making category and includes examples of drawing, digital modelling and physical artefacts to convey my final Dundee Design House concept.



Section A:A



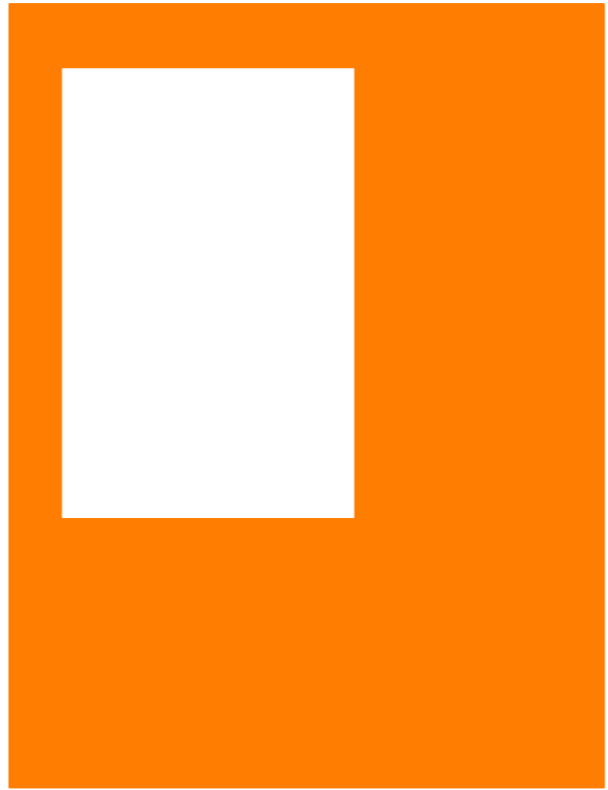
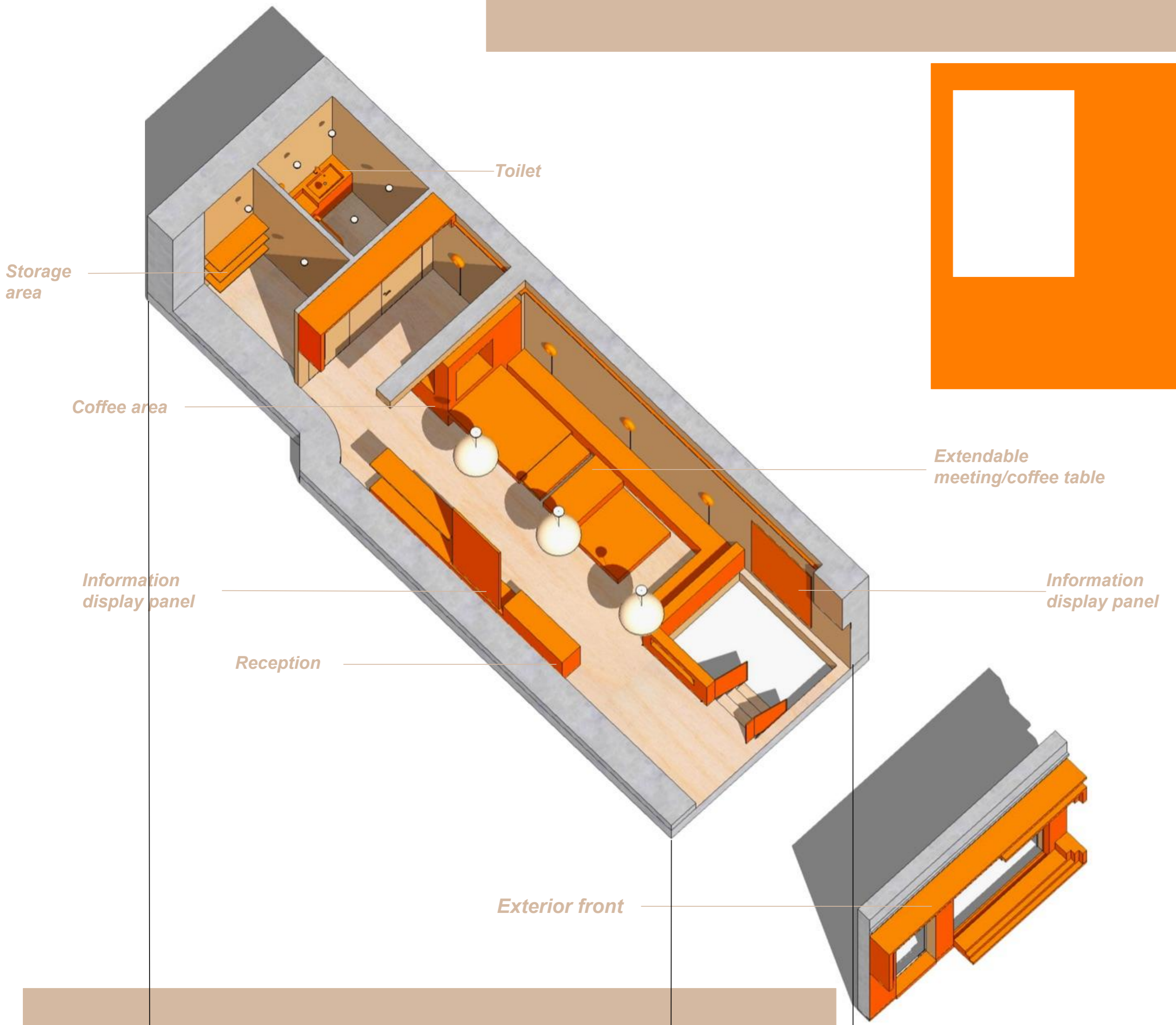
Section B:B



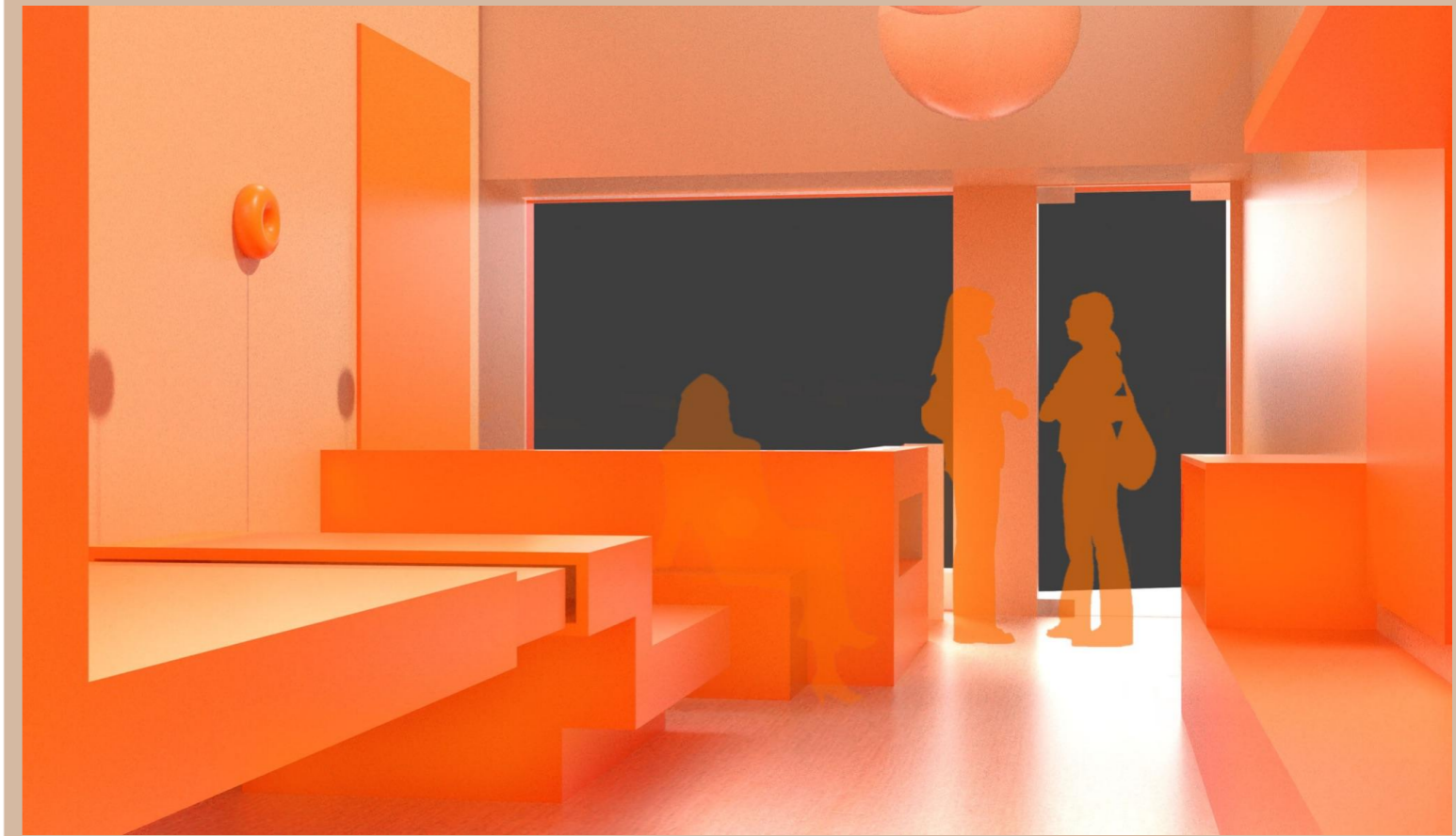
1:50 Scale Model

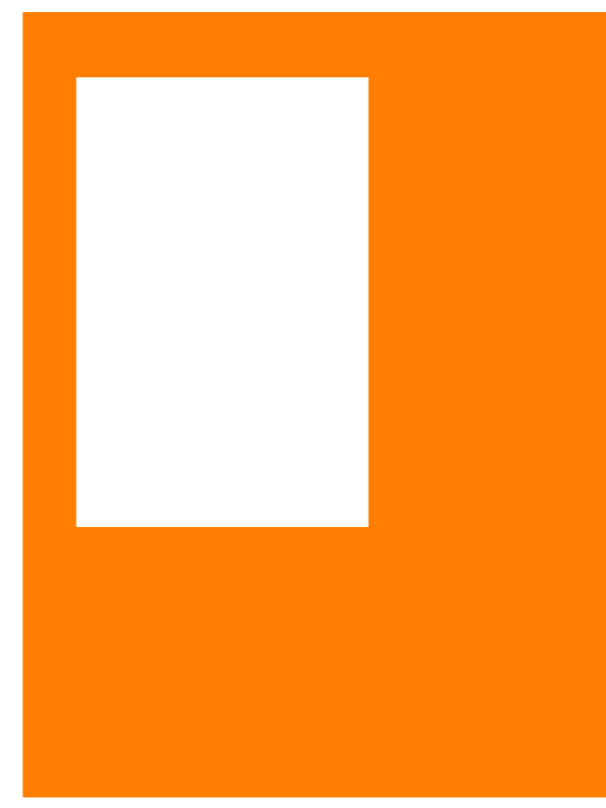
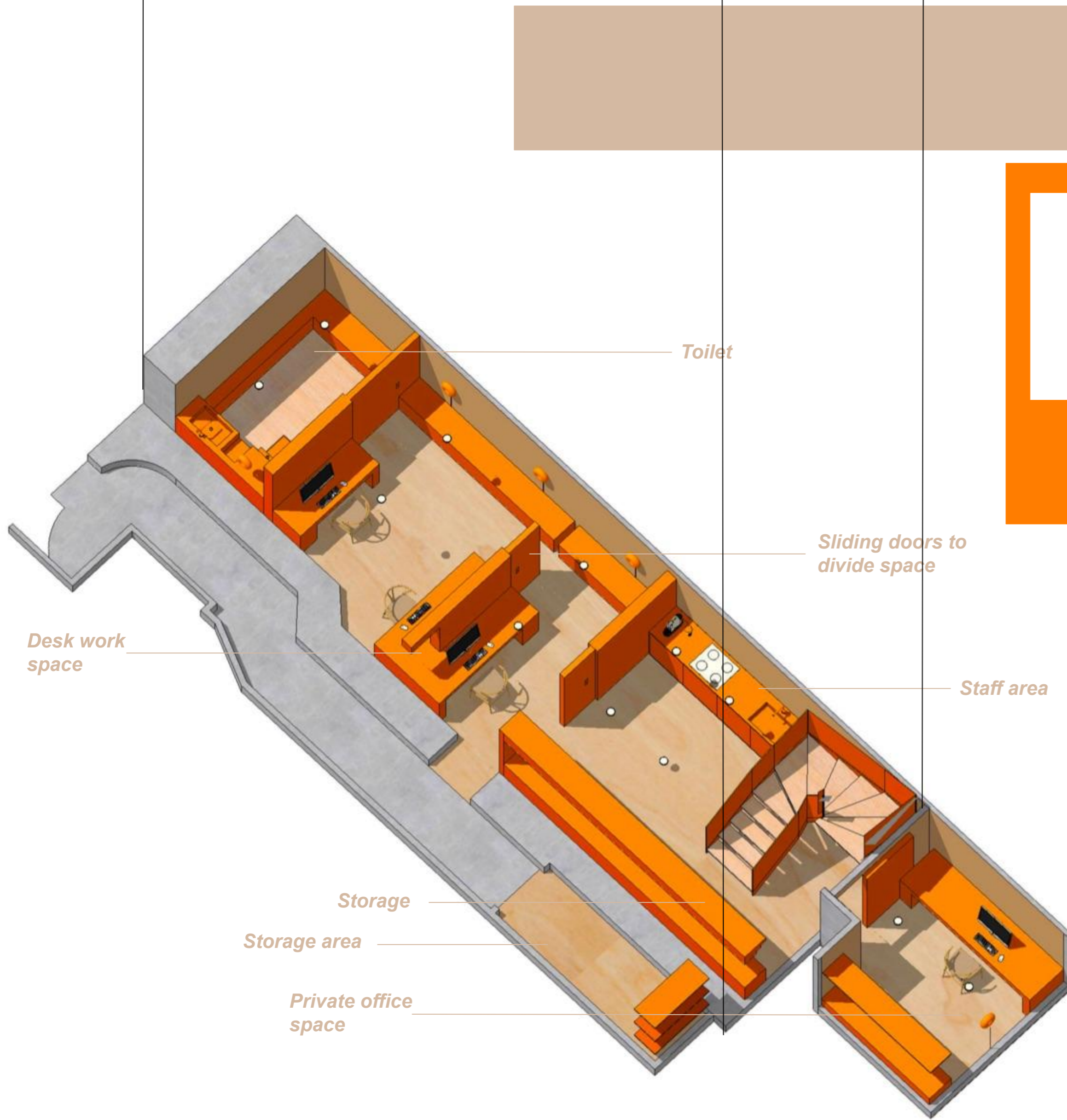


Front Elevation

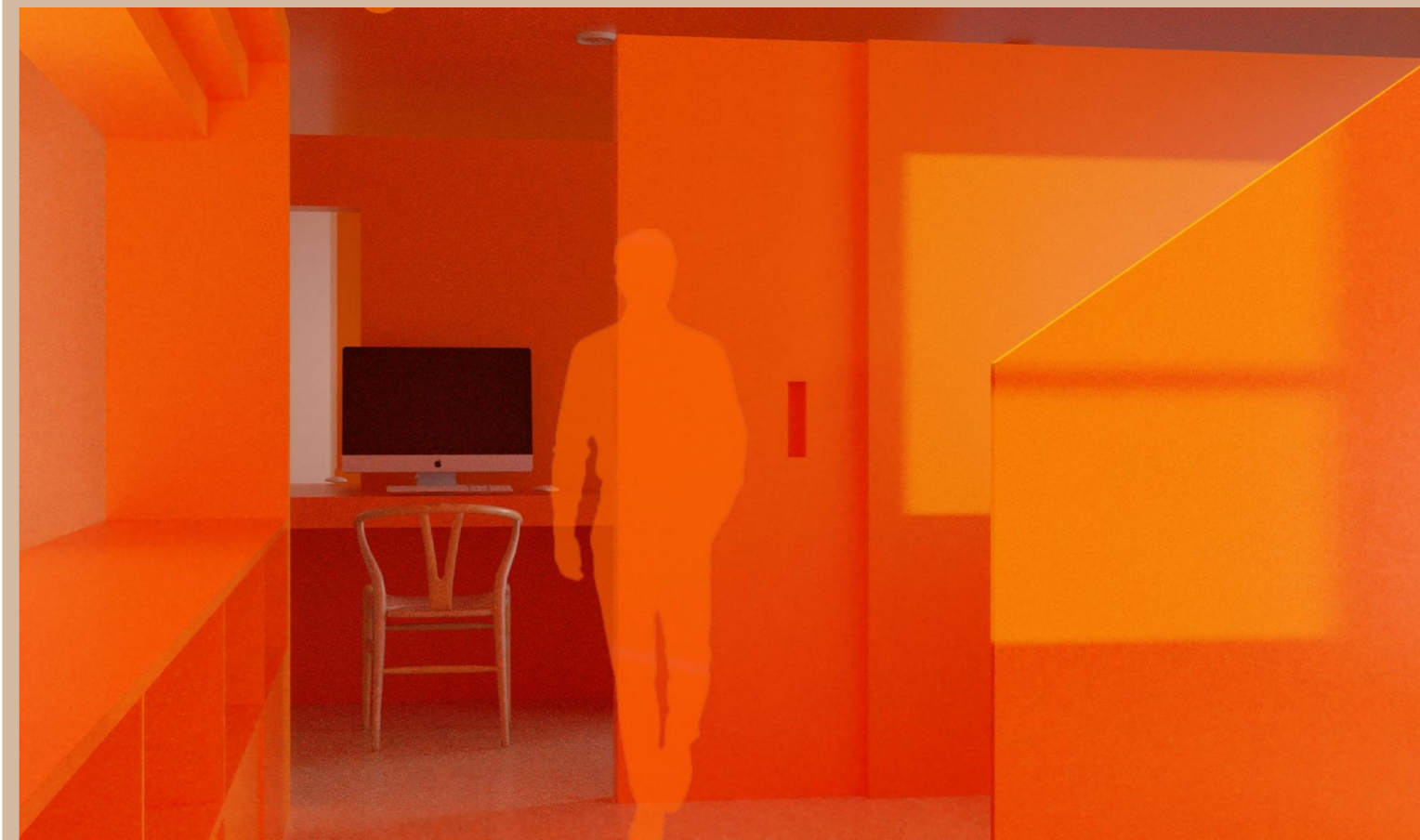


Perspective Visuals:





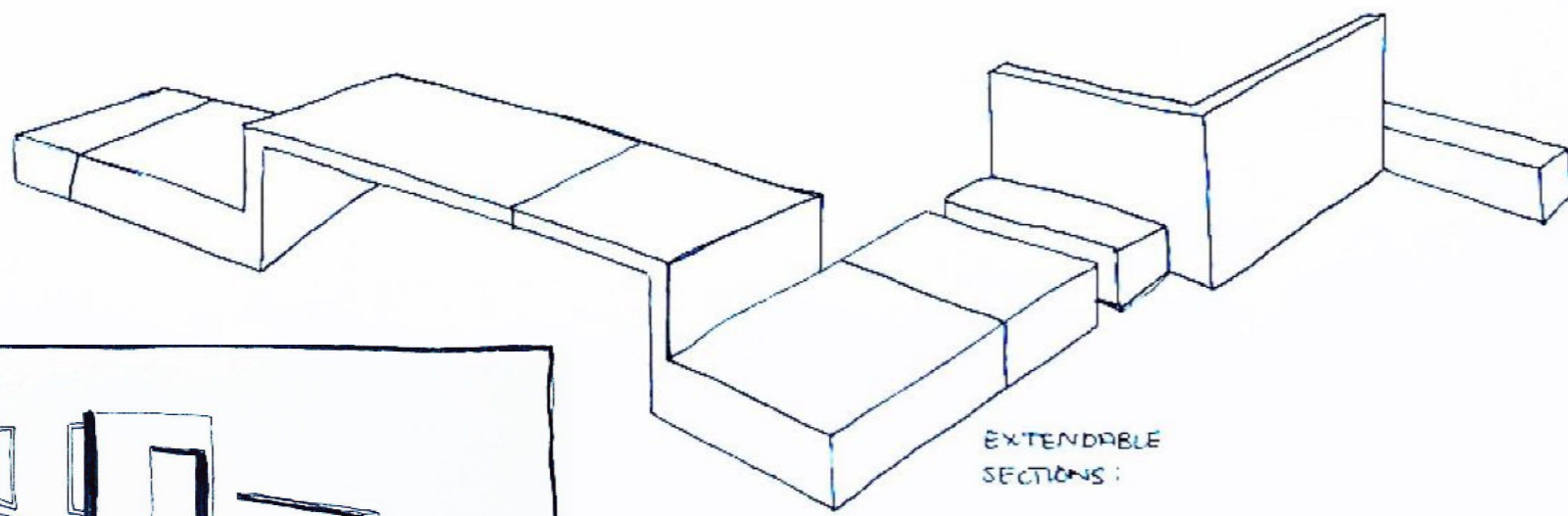
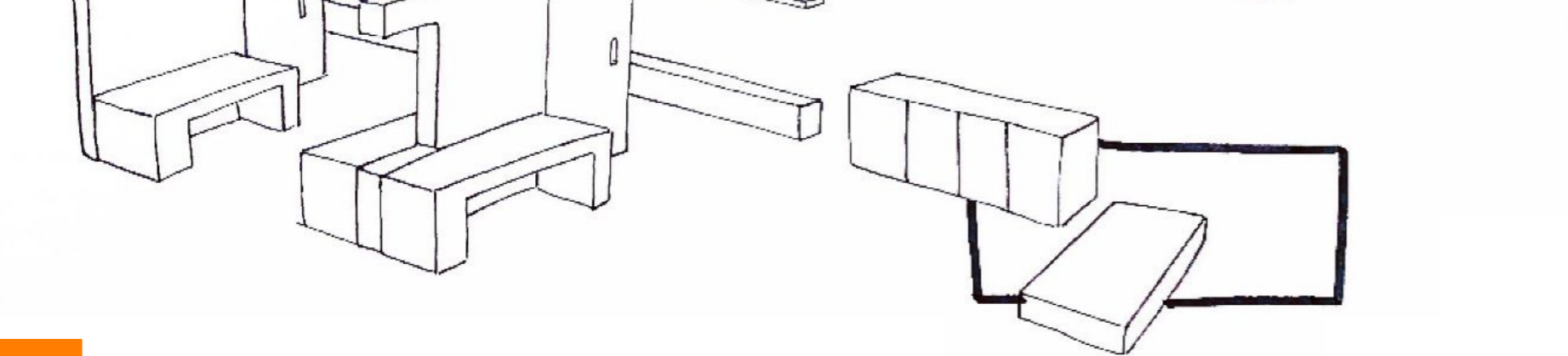
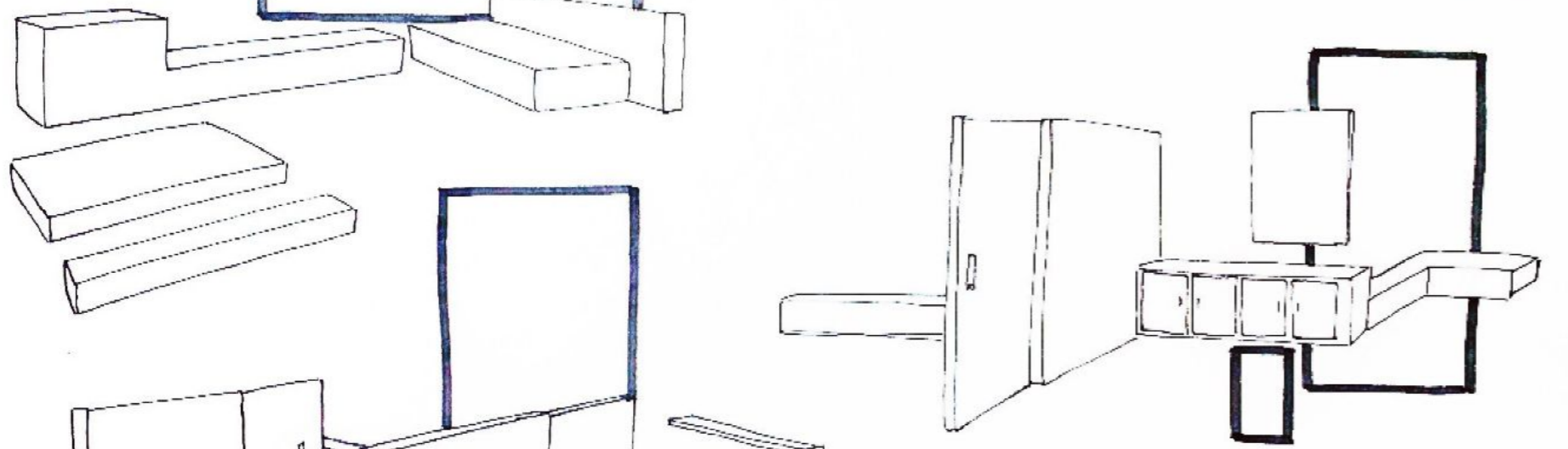
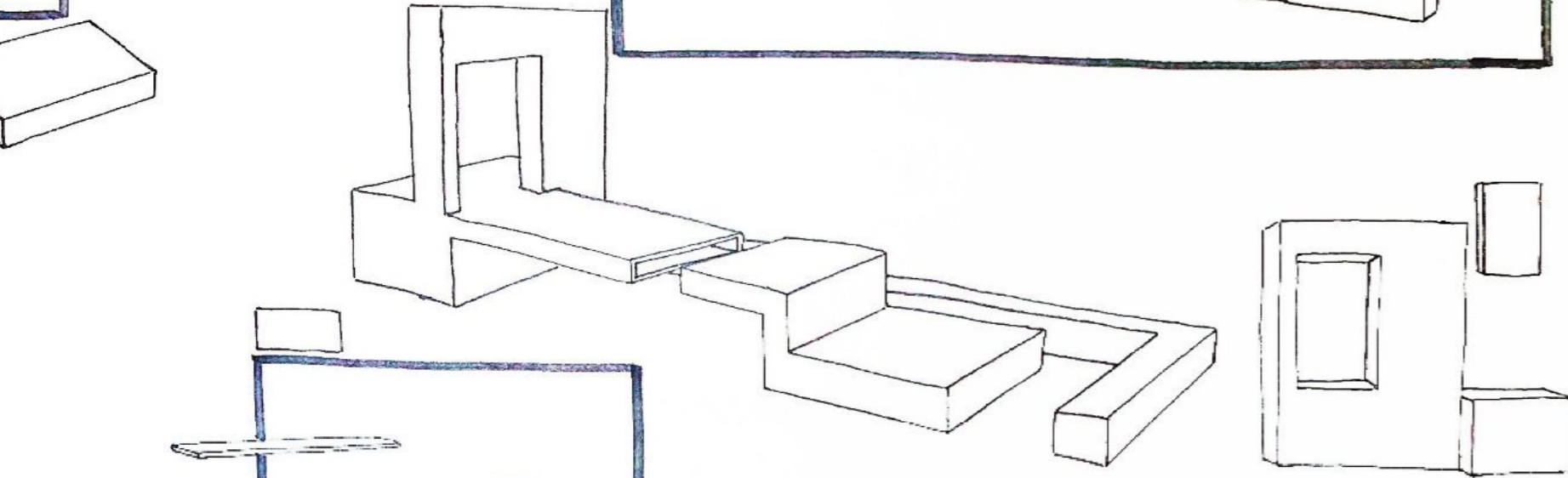
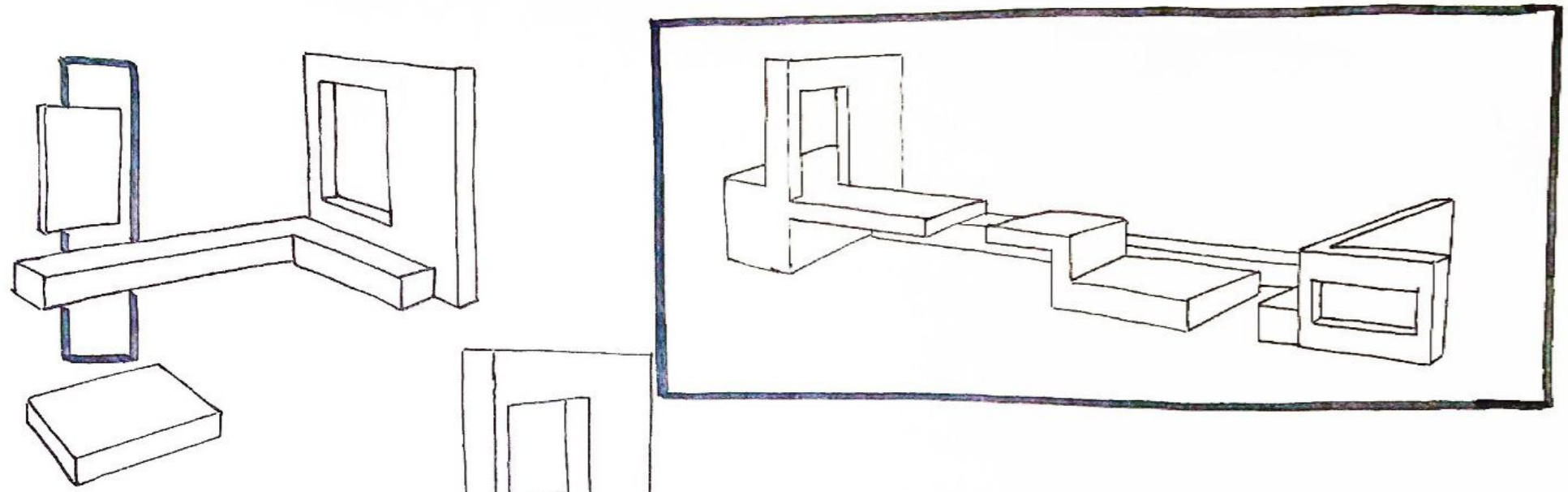
Perspective Visuals:



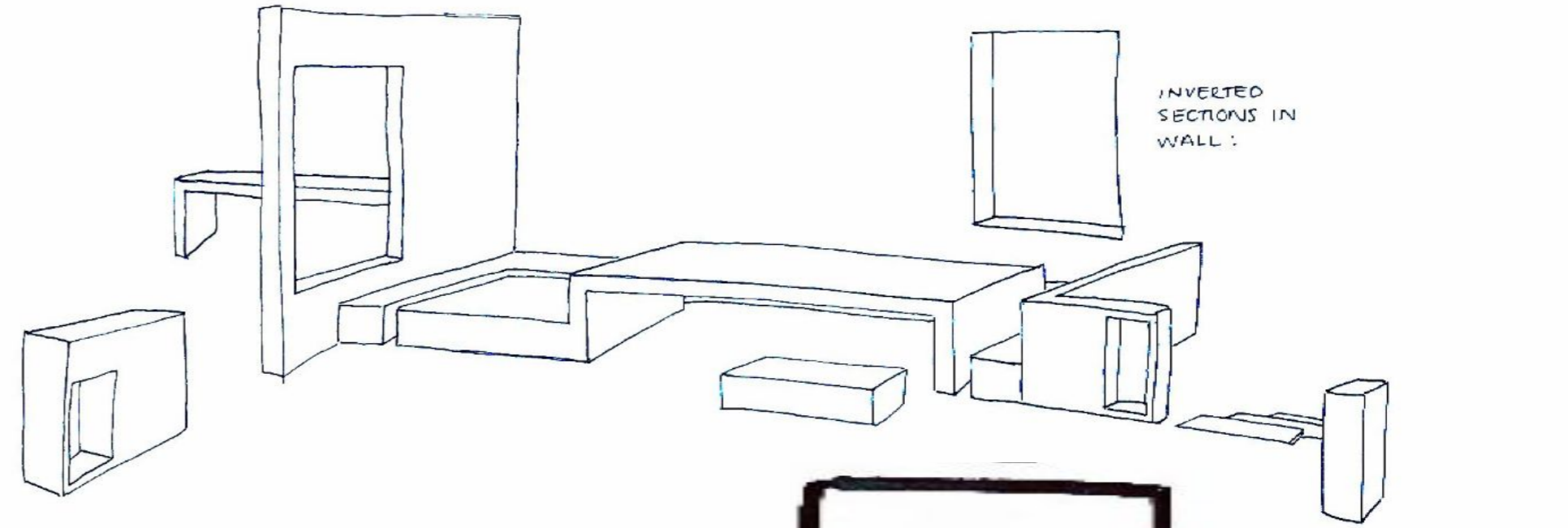
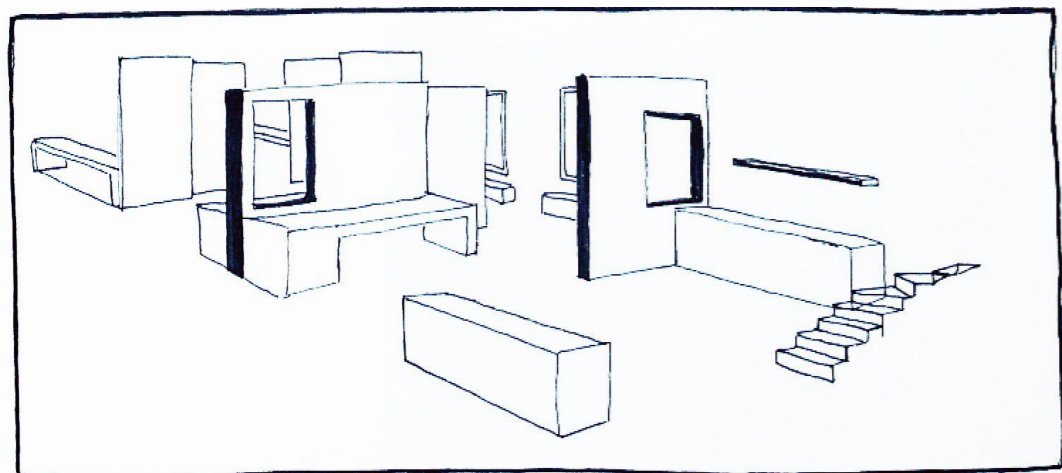
Exploded Axonometric:



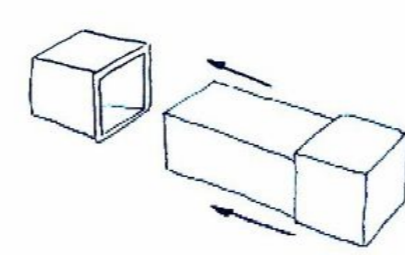
Sketchbook Development:



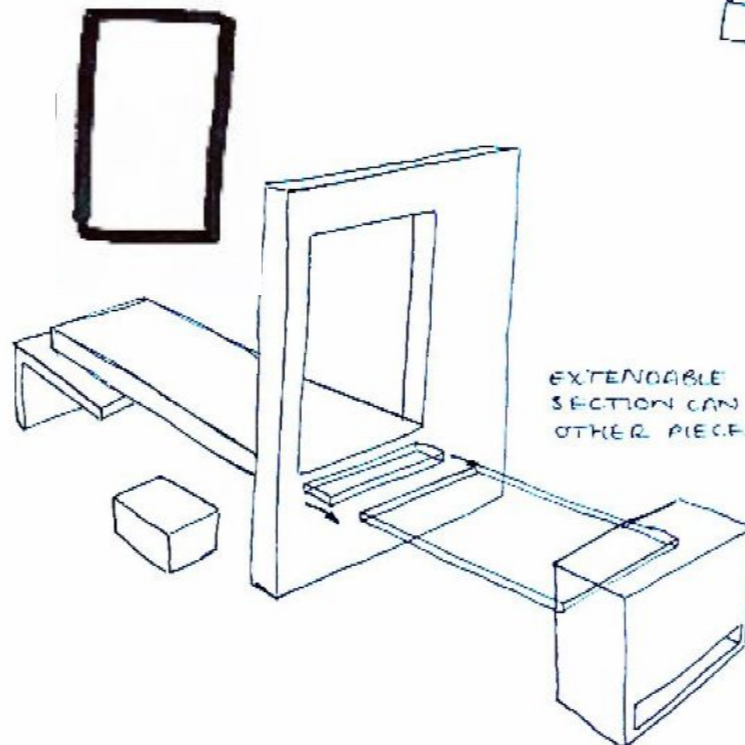
EXTENDABLE SECTIONS:



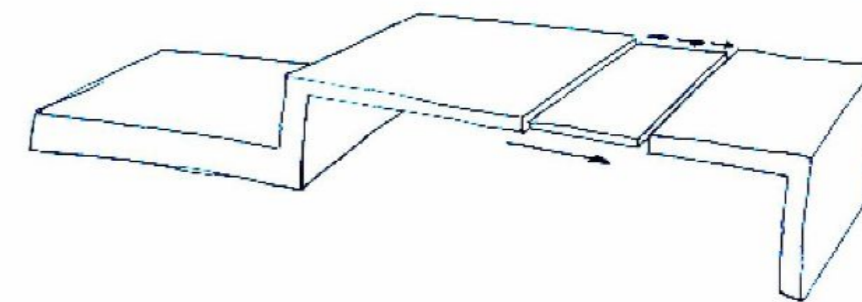
INVERTED SECTIONS IN WALL:



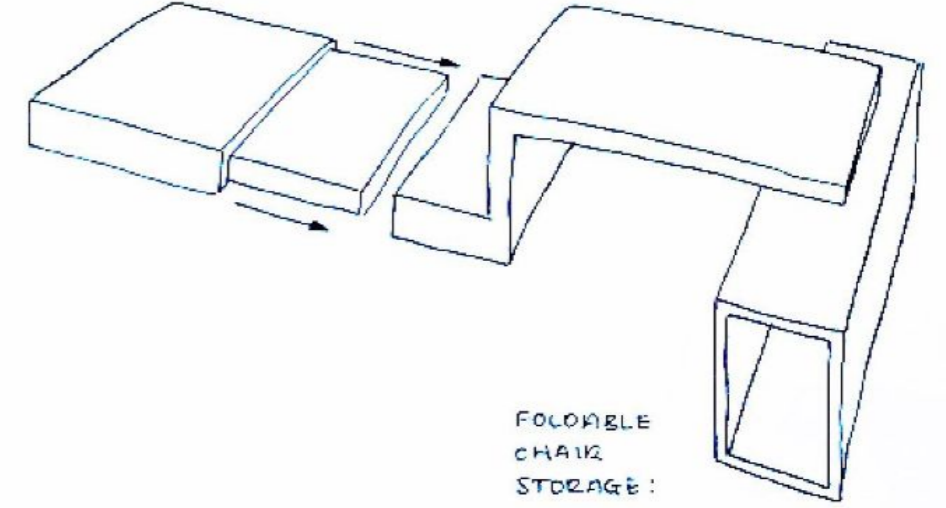
ADAPTABLE FURNITURE:



EXTENDABLE SECTION CAN REST ONTO OTHER PIECE:



EXTENDABLE:



FOLDABLE CHAIR STORAGE:

