

TAY'S TEA

Re-imagining tearooms through embracing tasseography and tea rituals.

The design re-imagines traditional British tearooms with the intention of creating new experiences of tea drinking while still retaining the comfort and 'second living room' values that original tearooms have always encouraged. Focusing on tearooms that have been deeply rooted in feminism and empowerment in the 20th Century by reclaiming a space specifically for women to be allowed to dine publicly unaccompanied.

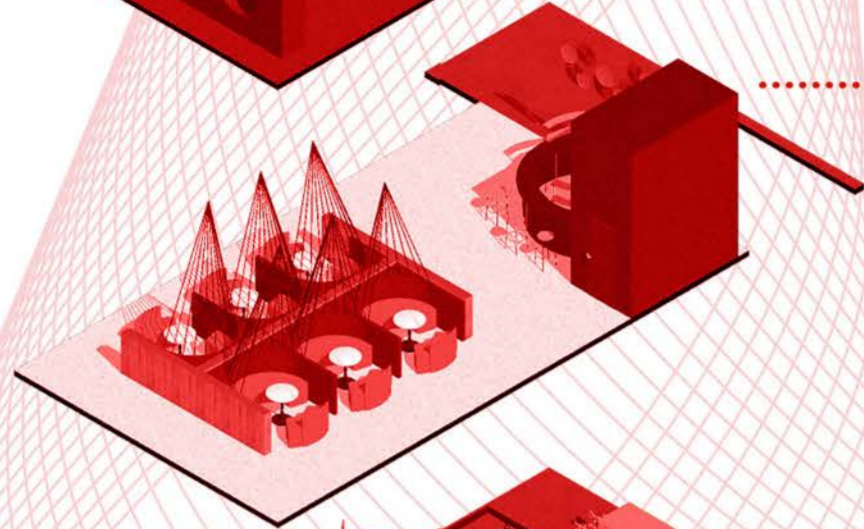
Each floor allows for a different tearoom experience all named after traditional tea ceremony rituals.

Three main themes that heavily influence the design are traditional asian tea rituals, the motion of stirring tea and tasseography a form of divination by reading tea leaves and interpreting symbols and shapes into meanings and messages.

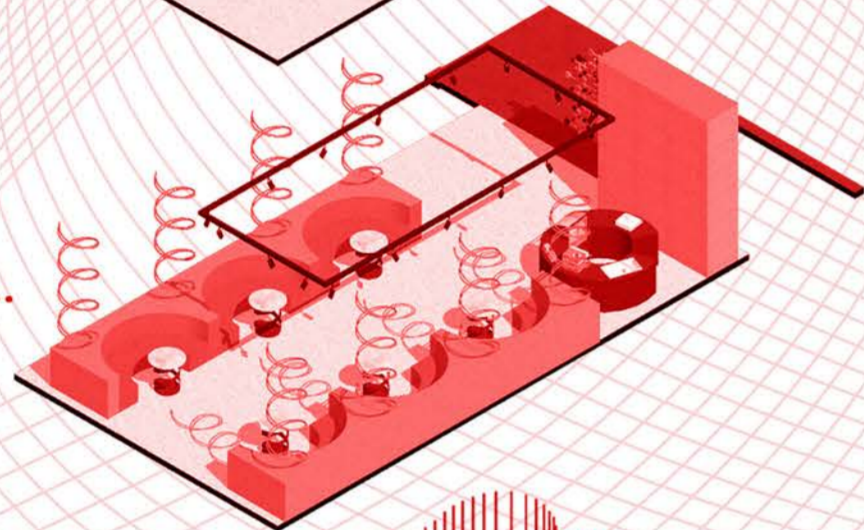
mind



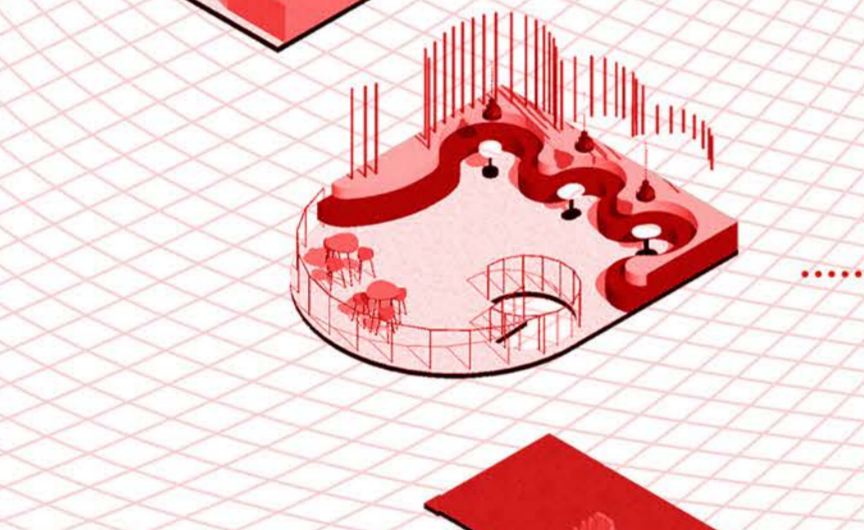
prosperity



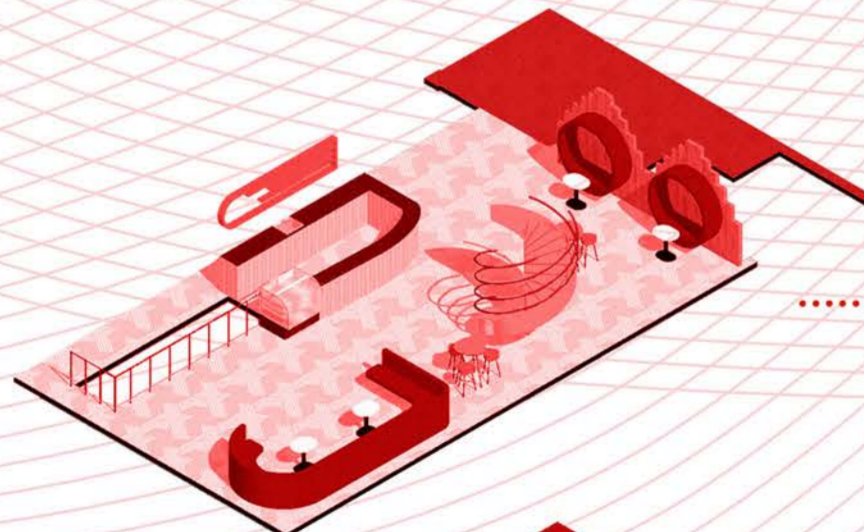
wealth



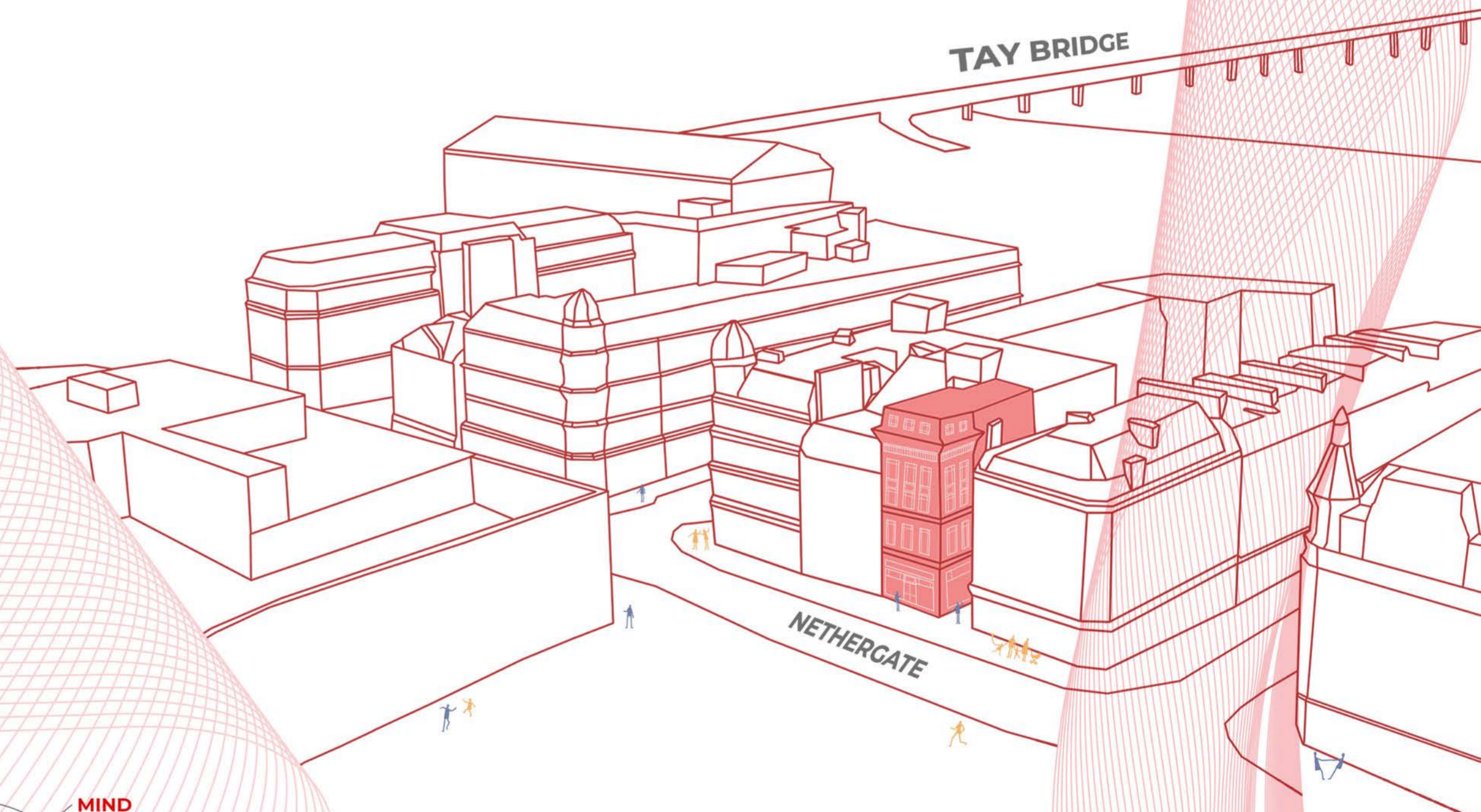
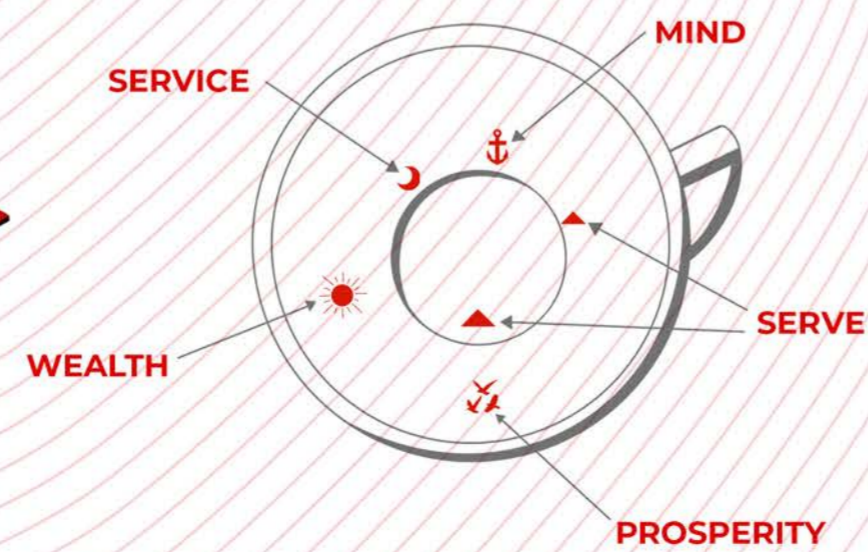
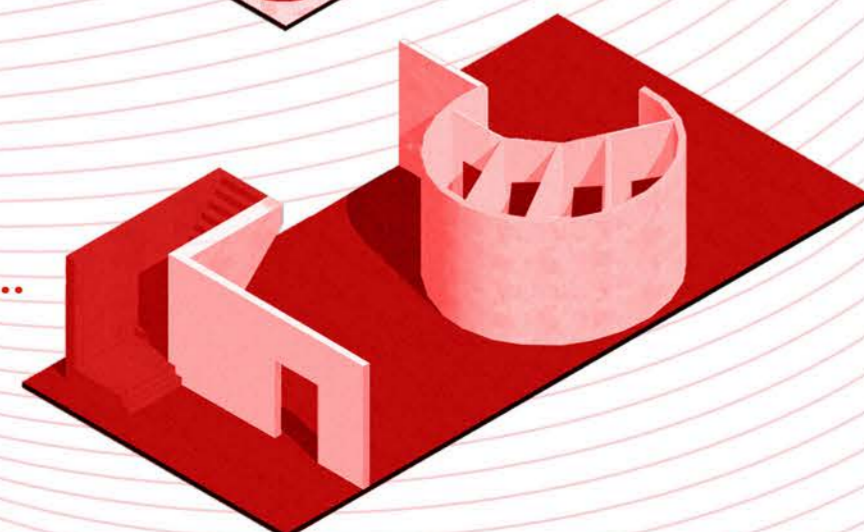
serve



serve



service



concept visualisation

Each floor is named after a traditional asian tea ritual that reimagines a different tearoom experience.

THEMES

inspiration for the design

RITUAL

Specifically in East Asia, ancient tea rituals are traditional ceremonies in for preparing, serving, and drinking tea, it allows people to slow down and connect with themselves and others. Each ritual encourages different aspects in life such as wealth, prosperity, luck, health and more.

TASSEOGRAPHY

A divination or fortune telling method that identifies symbols and patterns in tea leaves, coffee grounds, or wine sediments. The practice interprets in the shapes and configurations left on the cup and interprets them as meanings and messages.

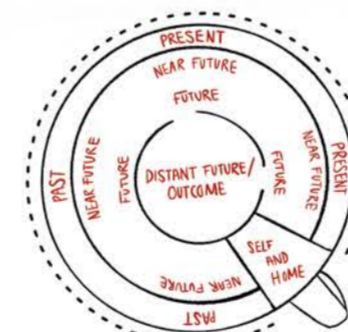
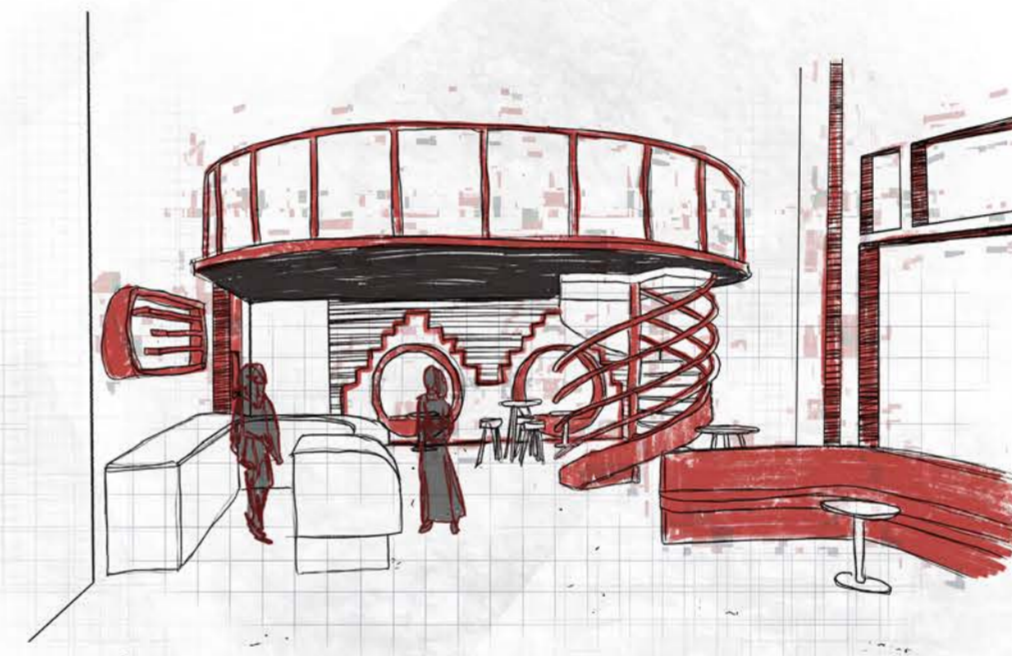
VORTEX

In a spiritual sense a vortex is a swirling of energy that are conducive to healing, mediation and self-exploration. In the physical sense vortex is a region in a fluid in which the flow revolves around an axis line, which may be straight or curved.



SERVE

Serve occupies the ground floor and mezzanine area of the building. It is a classic tea and coffee shop that allows for customers to have a short stay visit as well as a takeaway option with a selection of tea, coffee, and light snacks on offer.



TASSEOGRAPHY
DIAGRAM READING



STAIR ELEVATION



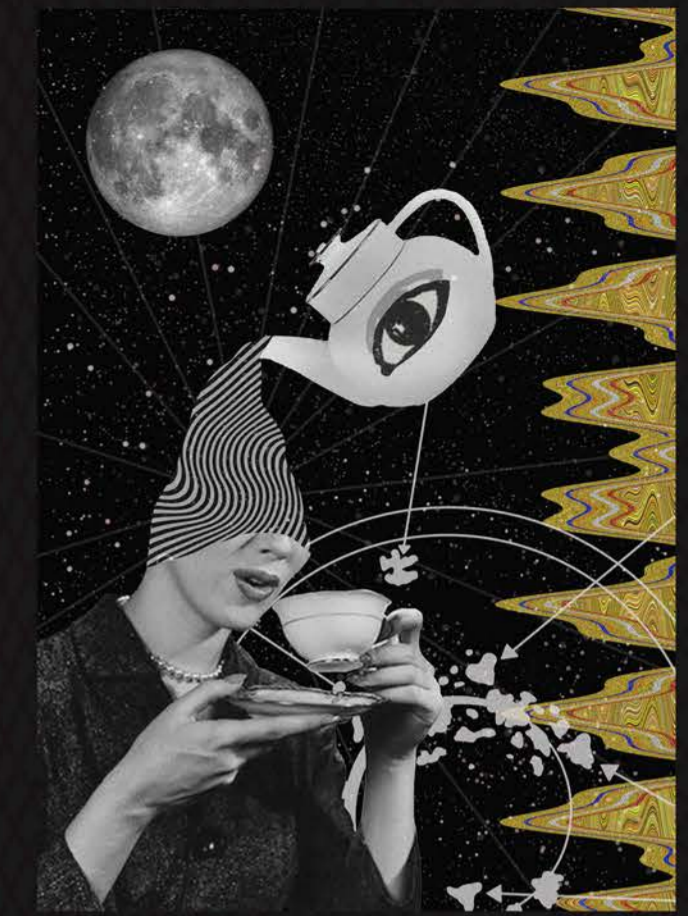
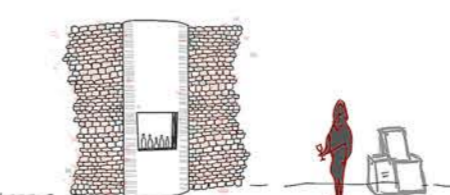
STAIR PLAN VIEW

SERVICE

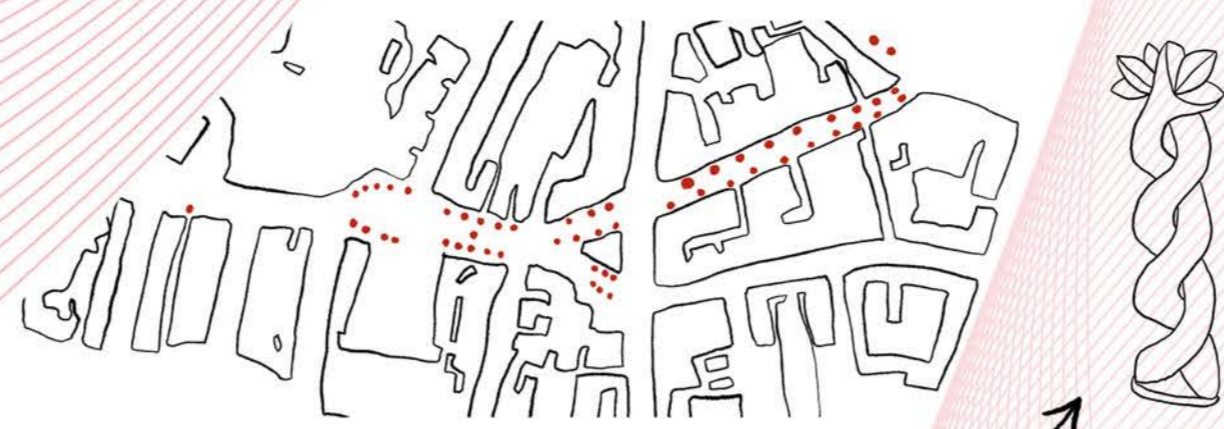
The elevator travels through the building from the ground, first, second and third floor for customers and staff members. It is also wheelchair accessible.

The dumb waiter allows for staff to transport food and beverages from all floors including the basement which allows for easy restock at any time.

The toilets in the basement are only accessible via the stairs however there are accessible toilets on the first floor and second floor which includes wheelchair access when using the elevator.



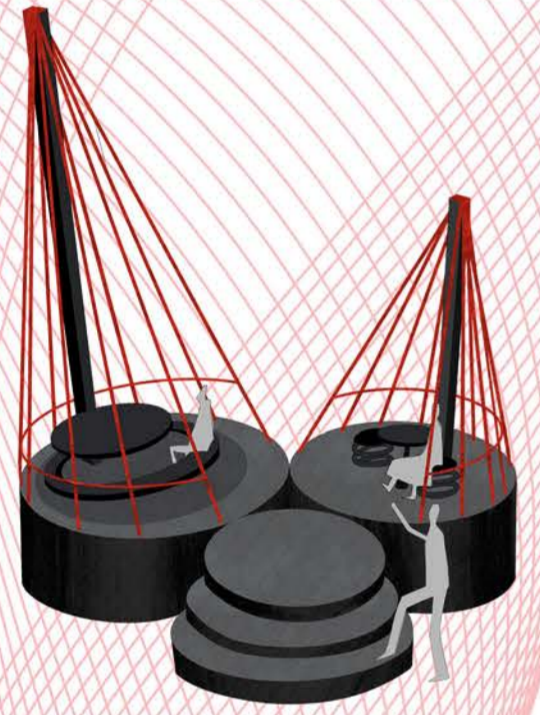
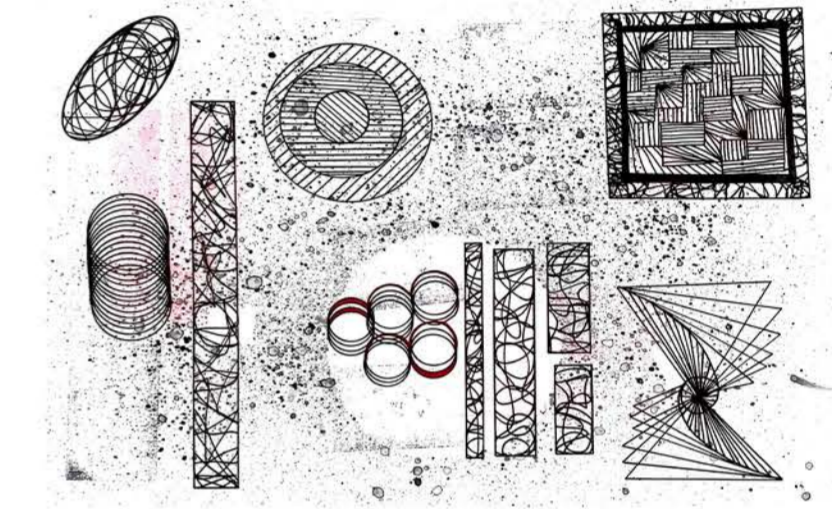
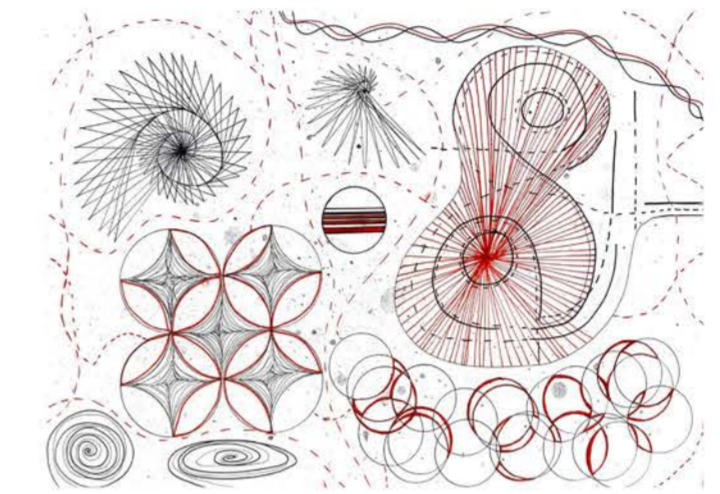
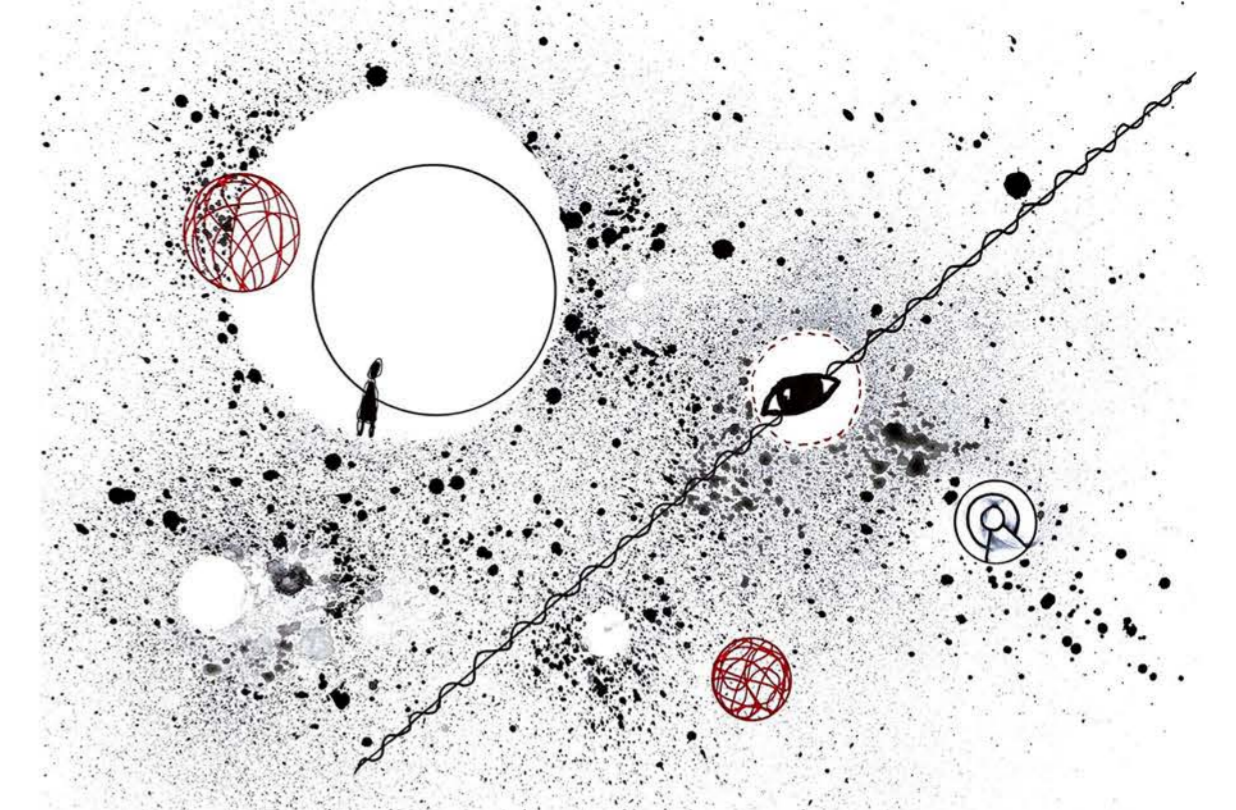
concept visualisation



The trail of twisted bollards throughout the city

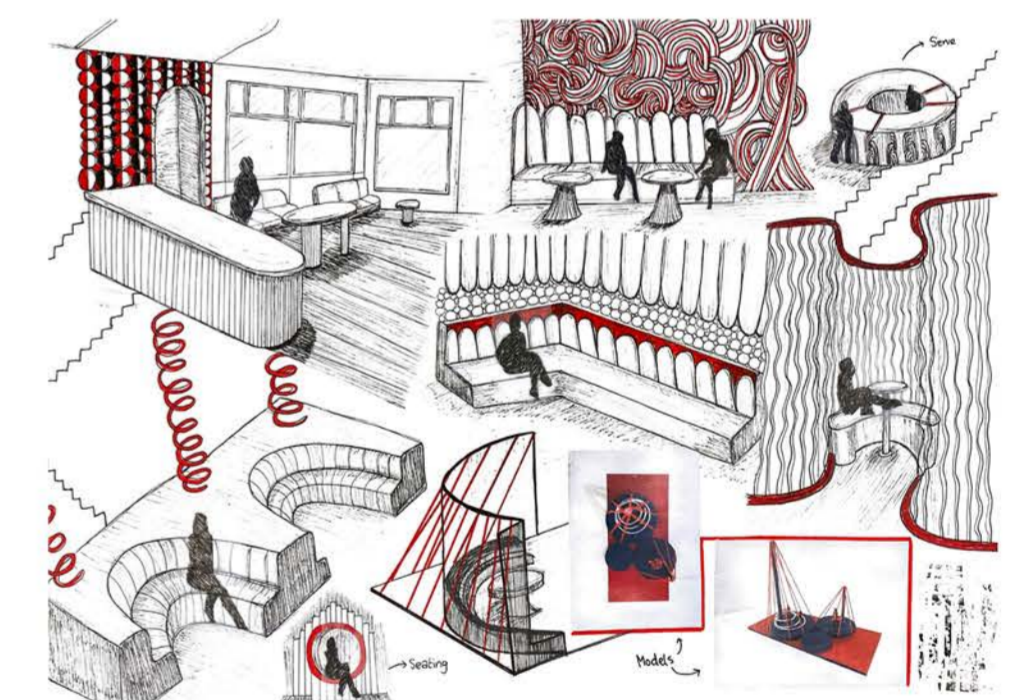
WEALTH

Wealth is situated on the first floor and represents friendship and the richness of life. It serves a traditional British 'Afternoon Tea' and allows for bigger or smaller groups of people to indulge in scones, pastries, sweet cakes and tea.



PROSPERITY

Prosperity is located on the second floor and represents a more intimate setting where smaller groups can explore the spiritual art of tasseography. A selection of tea, coffee, and wine is available along with a leaflet guide to help you interpret your readings.

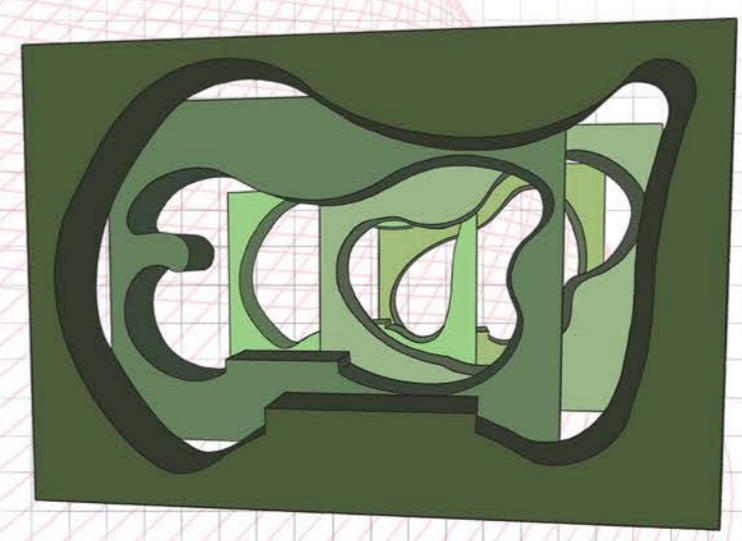
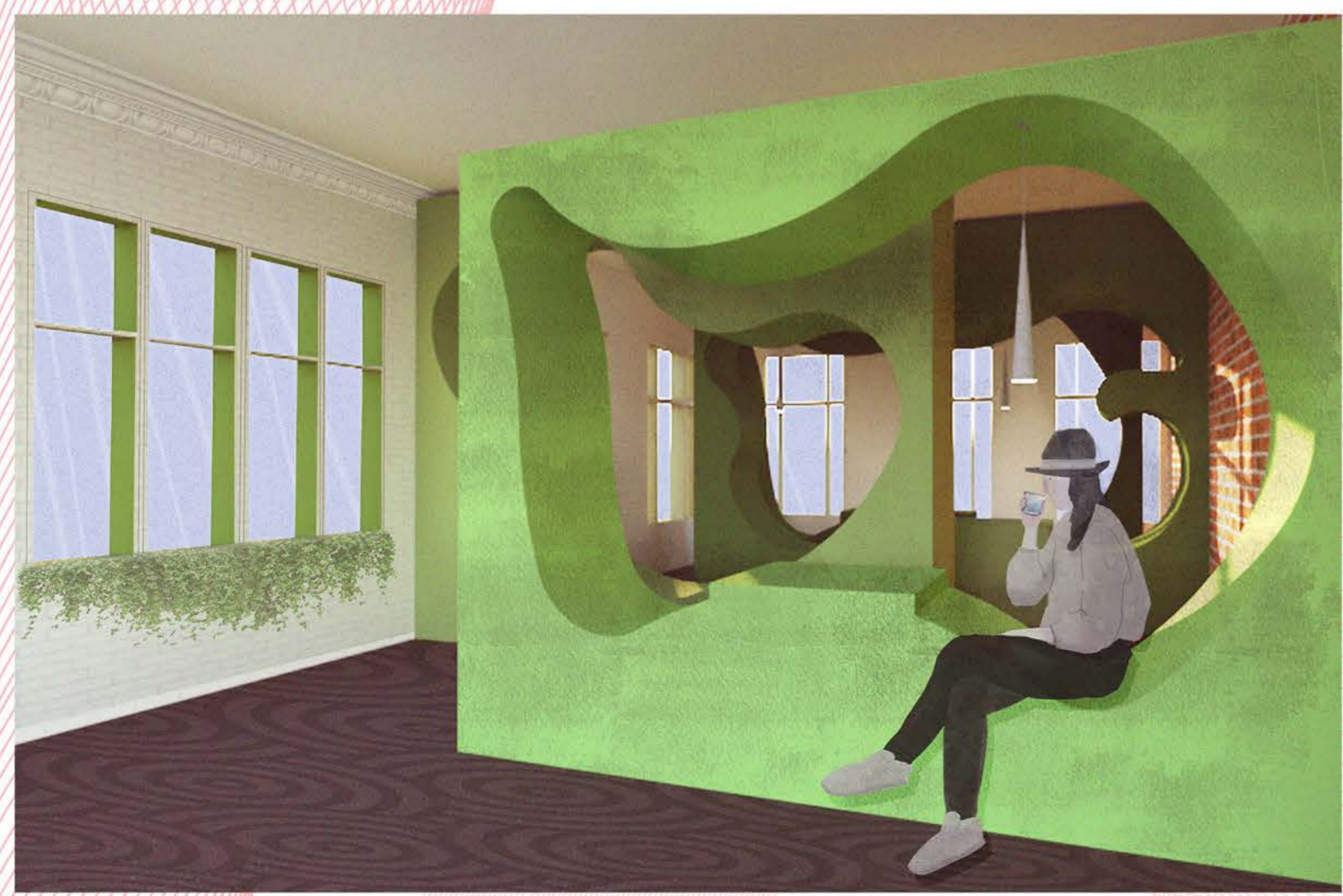


RETAINING THE BUILDINGS ORIGINAL ART DECO FEATURES



MIND

Mind can be found on the third floor and represents a place of healing and solitude where people can enjoy their own company and serve themselves by making their own beverage with a selection of tea and coffee to choose from.

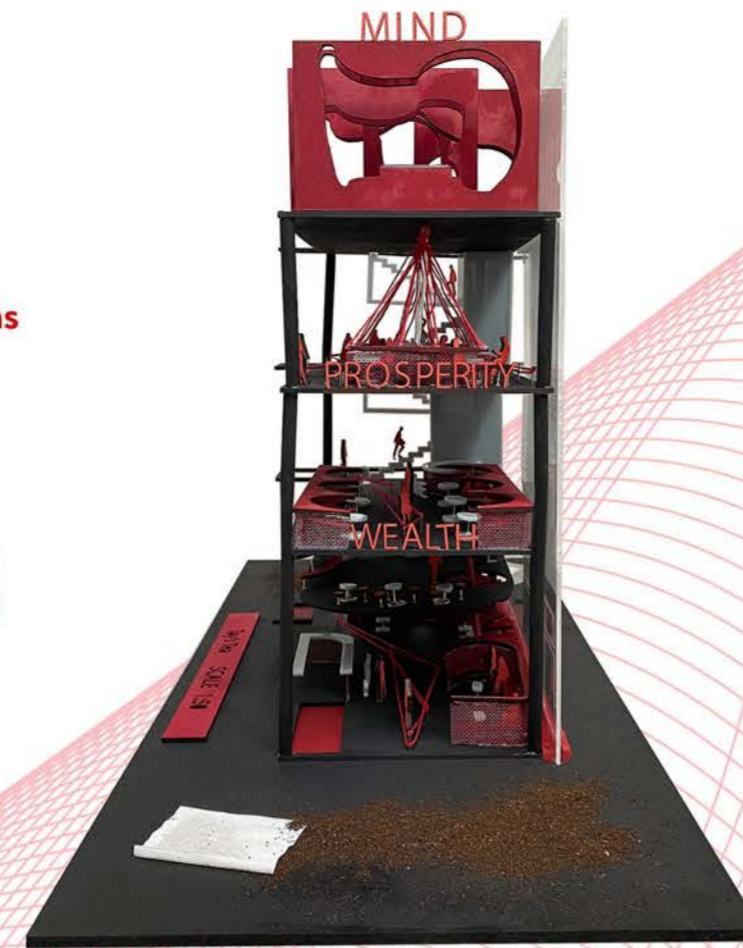
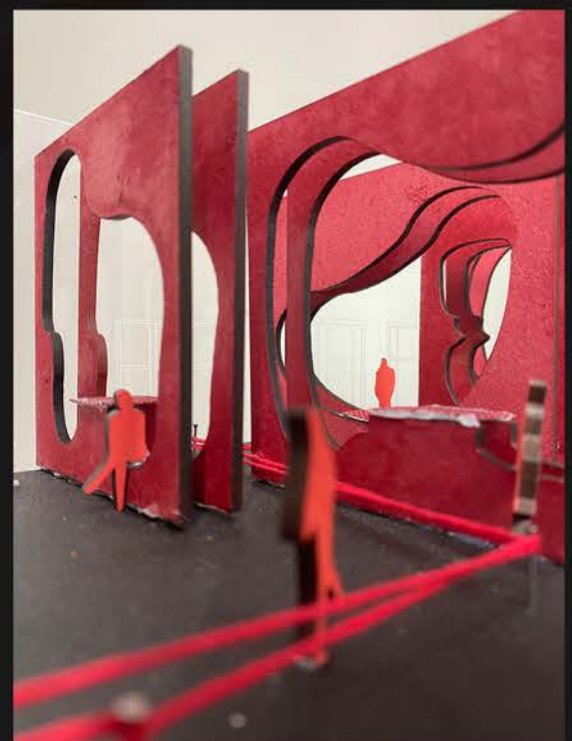
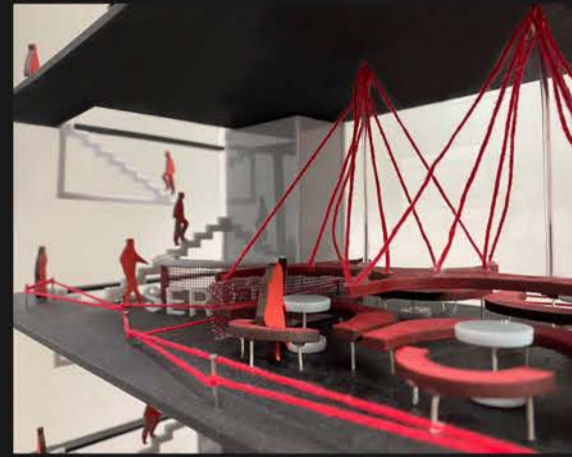


model making

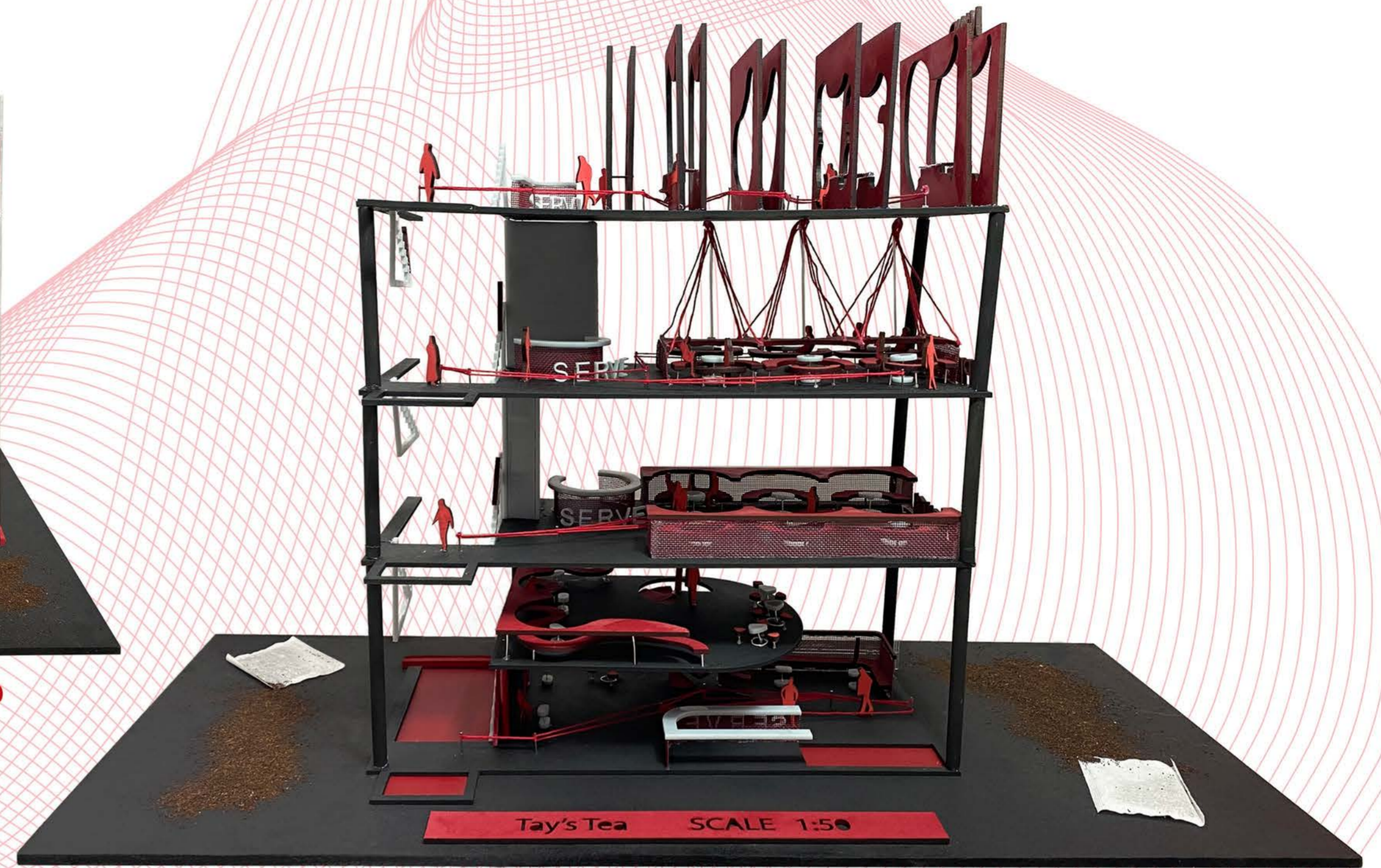
The spatial arrangement is heavily influenced by the physical motions of tea.

The tea trail task created pathways that were incorporated into the spatial journey for the user throughout the building. This was also inspired by the bollard installations that trail through the Dundee city centre.

The shape of the furniture subtly mimics the curvature and form of the handles on teacups and spoons as well as the art form tasseography where the tea creates shapes and patterns that influenced some of the seating areas



SCALE MODEL 1:50



SCALE MODEL 1:50



make a cup of tea

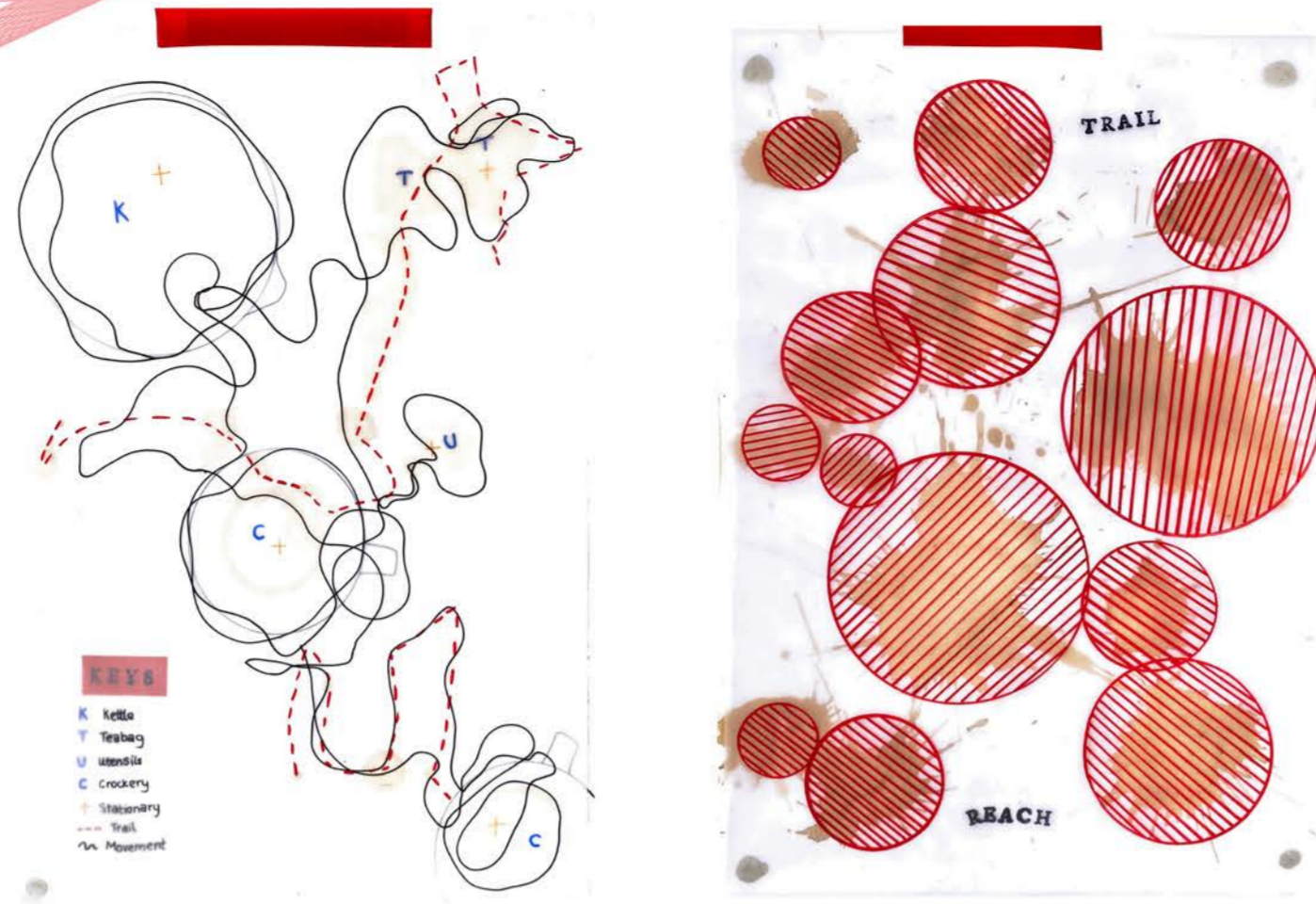


User Service Task 1

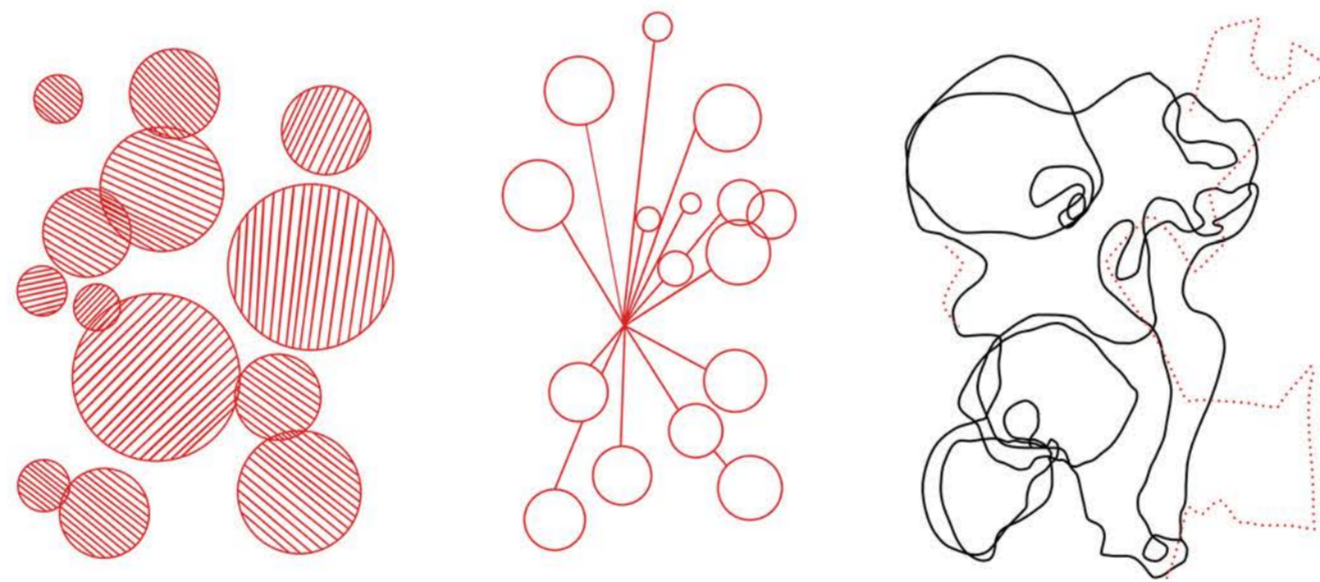
Stage 1: The participants make a cup of tea on top of an A3 sheet of card. The tea created stains and trails that tracked the movement of the user making the tea.

Stage 2: I drew over the finished stains on detail paper and drew out the paths and cluster zones.

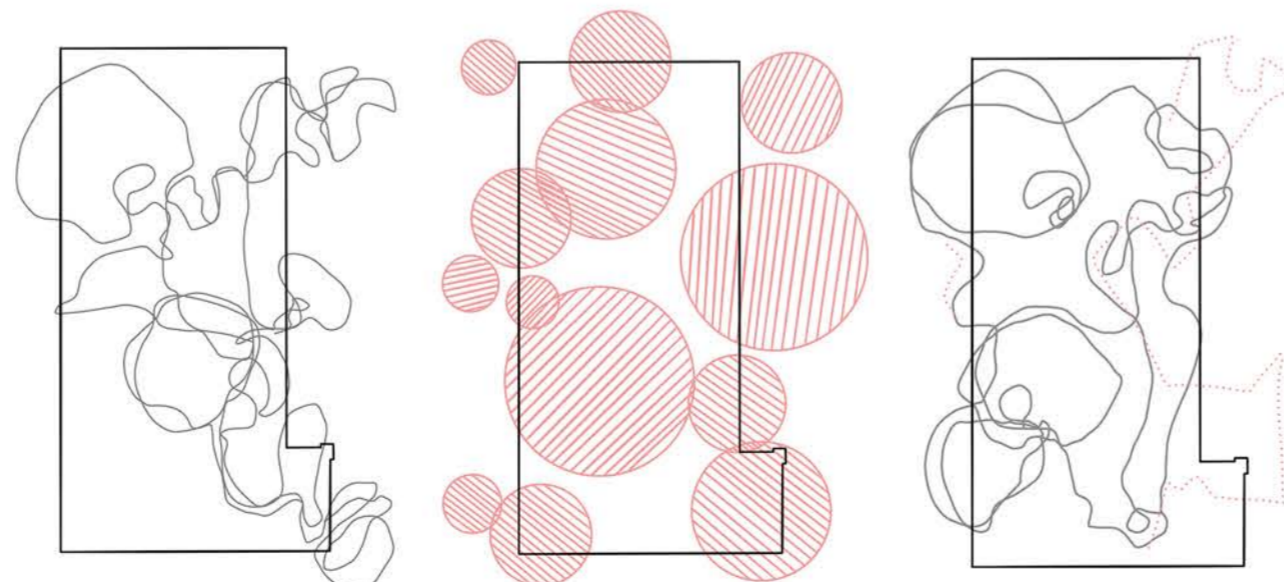
Stage 3: I then took these drawings and placed them over my floor plans as a way to spatially explore these markings and user experience.



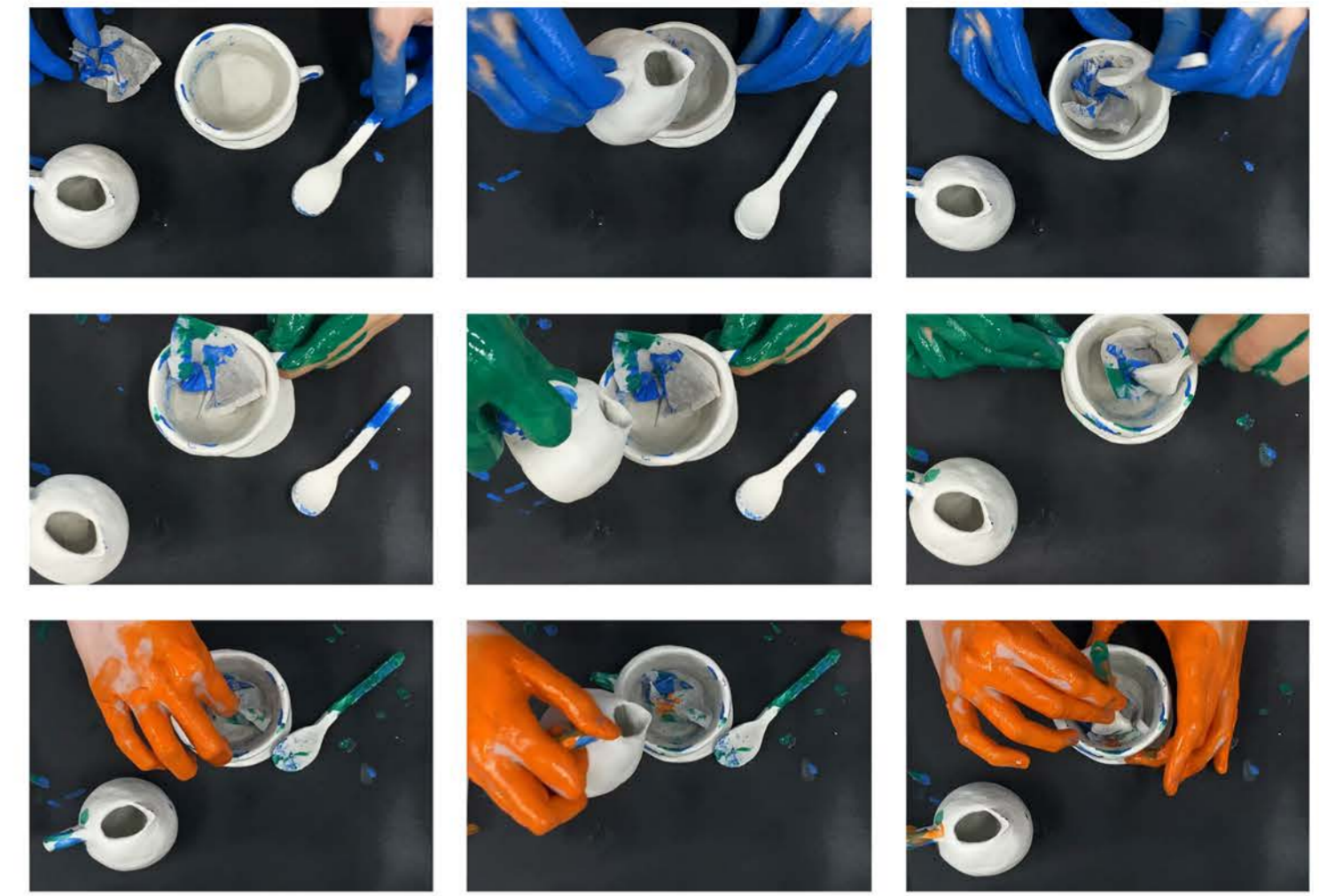
user service task 1: stage 1



user service task 1: stage 2



user service task 1: stage 3



User Service Task 2

Creating a mug, spoon, kettle, and saucer out of clay and tea bag included the participants covered their hands in paint and act out making a cup of tea. This tracked the parts of the objects that had the most contact when making a cup of tea.

The areas that were more saturated in paint were focused on. Considering tactility specifically with handles throughout the tea room as well as using the form of the handles to create spatial features including seating and installations.

