

LOCHEE HIGH ST

HILLTOWN PARK

LOWER PLEASANCE

MURRAYGATE

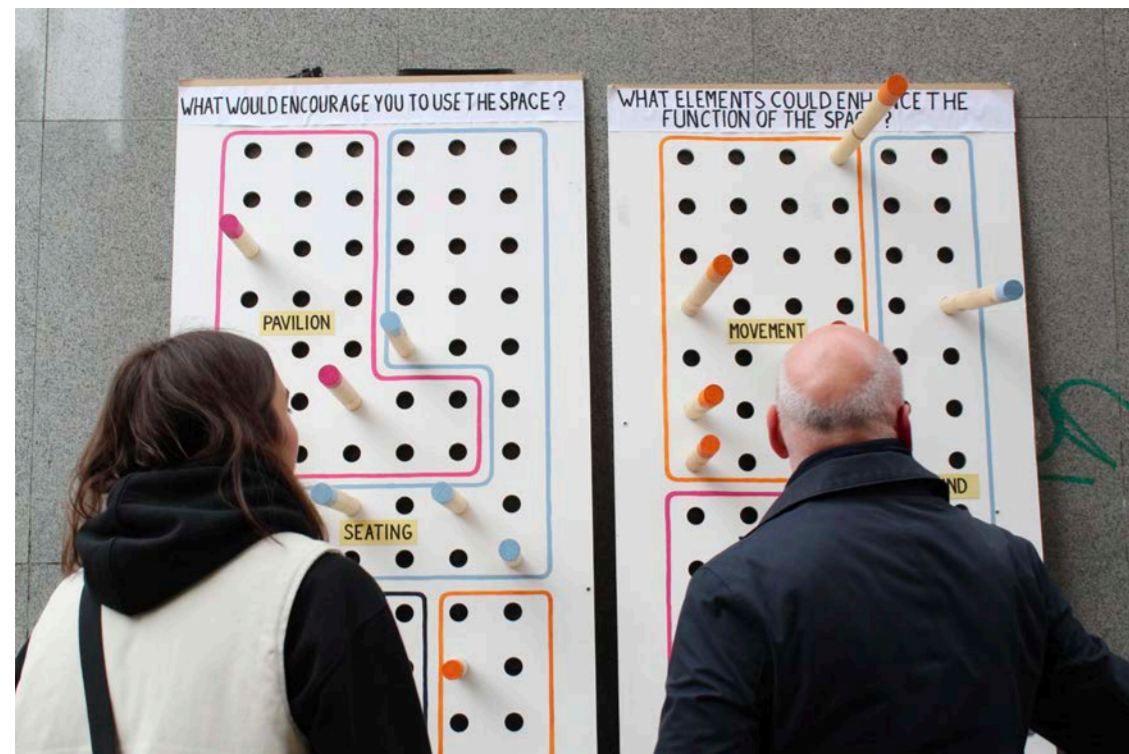
TAY SQ

MAGDALEN GREEN

URBAN ACUPUNCTURE



GEORGIE AULD



The exercise facilitated a meaningful dialogue, allowing me to gauge users preferences and integrate their perspectives into my design approach.

CAMPUS

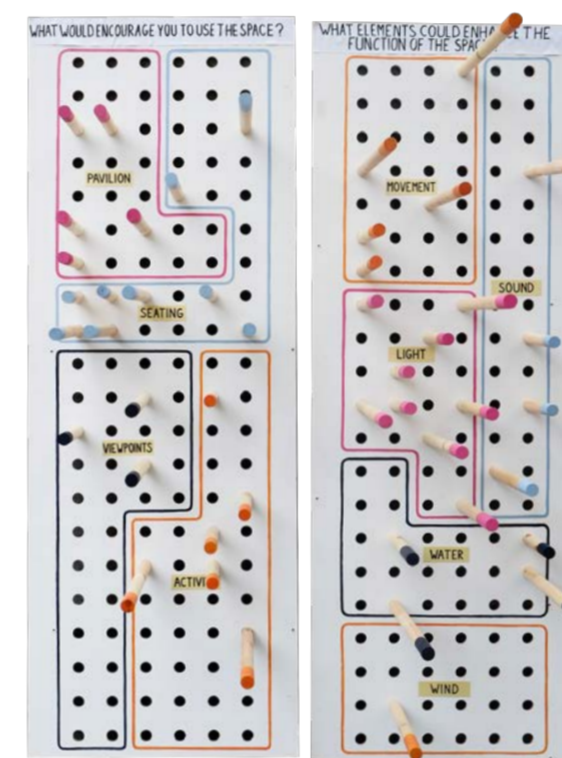
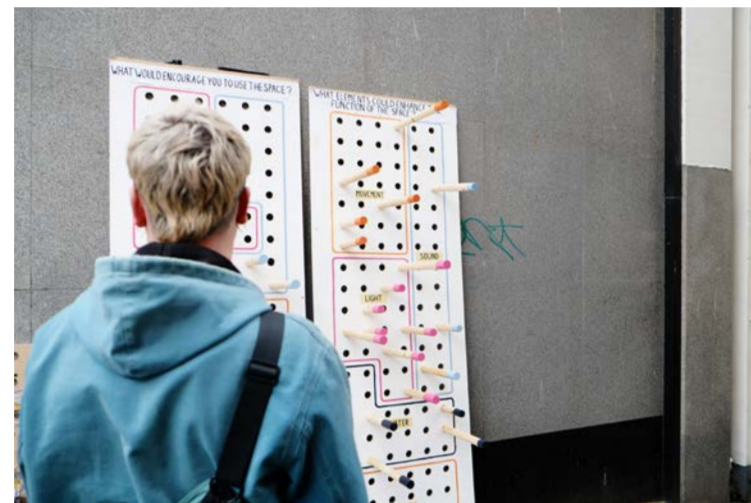


THROUGH DUNDEE



SET- UP IN HORSE WYND

Taking the task to one of the identified sites, I invited individuals to participate in the co-design process, encouraging them to envision the full spectrum of possibilities for these spaces. By facilitating this engagement, I aimed to tap into the desires and aspirations of the local community, allowing their input to guide the future design endeavors.



01

ENGAGING THE COMMUNITY OF DUNDEE

Dowels were used, acting as acupuncture needles, strategically inserted into holes within perforated MDF sheets. These sectioned holes provided concise answers to the key questions presented at the top of the boards.



Driven by a desire to gain profound insights into the potential of underutilised spaces within the urban fabric, I embarked on a co-design endeavor, seeking input from the community of Dundee. Recognizing the time constraints faced by city center residents, I devised a quick and accessible task that would yield valuable information.

ENGAGEMENT RESULTS

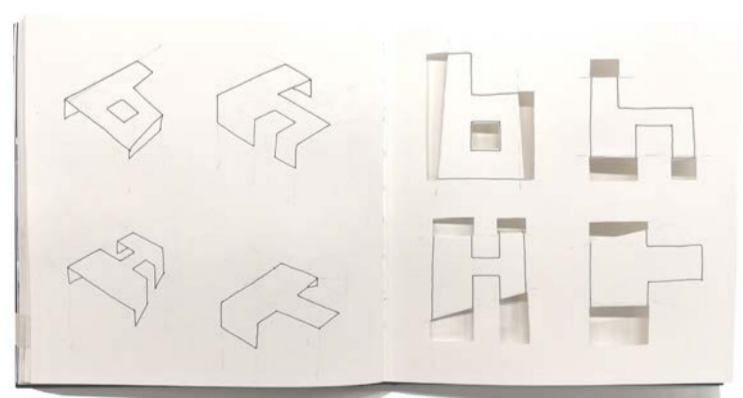
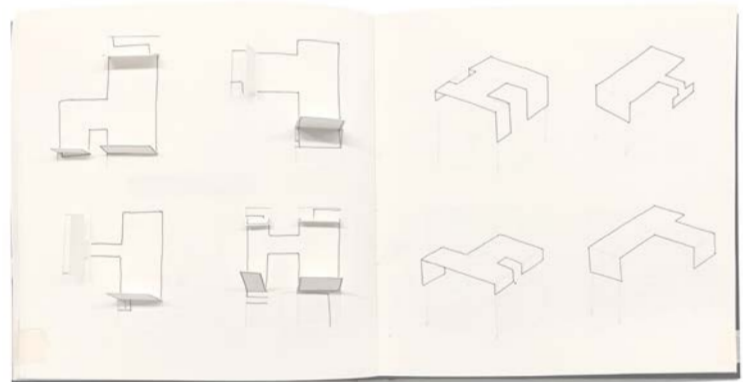
22
RESPONSES



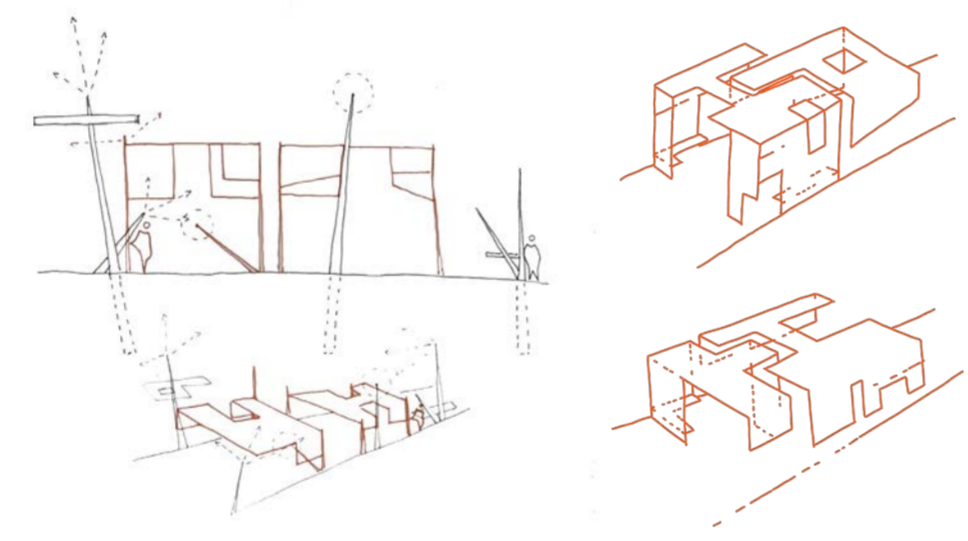
Turning my focus to more permanent structures, I began sketch modelling to develop ideas further.

DERIVED THEMES

- MOVEMENT
- SOUND
- LIGHT
- PAVILION
- SEATING

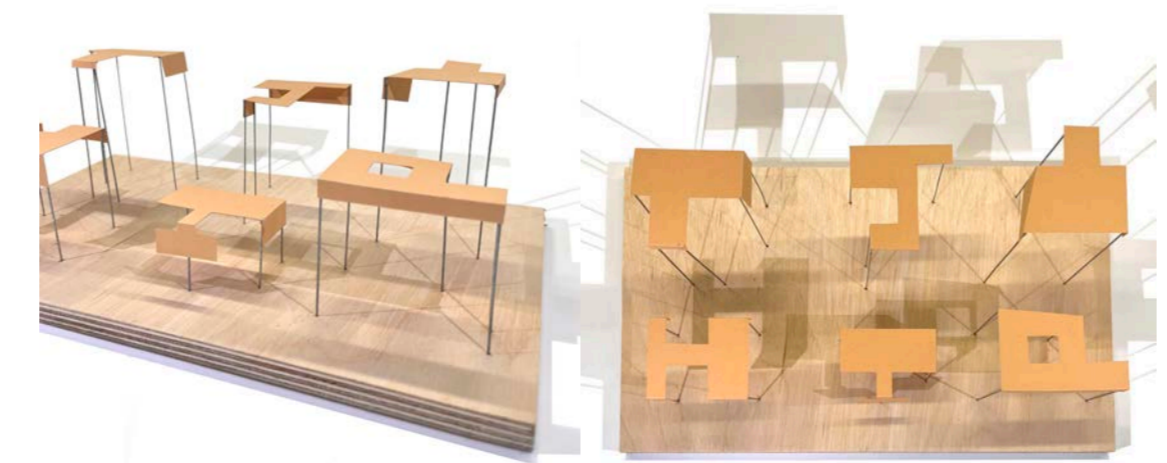


Inspired by the theme of movement I found inspiration in Hong Kong dragon holes. Fascinated with the spiritual symbol that is believed to provide the paths in which energy flows through Hong Kong. As acupuncture directly relates to the movement of energy along meridian pathways, my development process began by abstracting the shapes of the dragon holes found in architecture in Hong Kong.

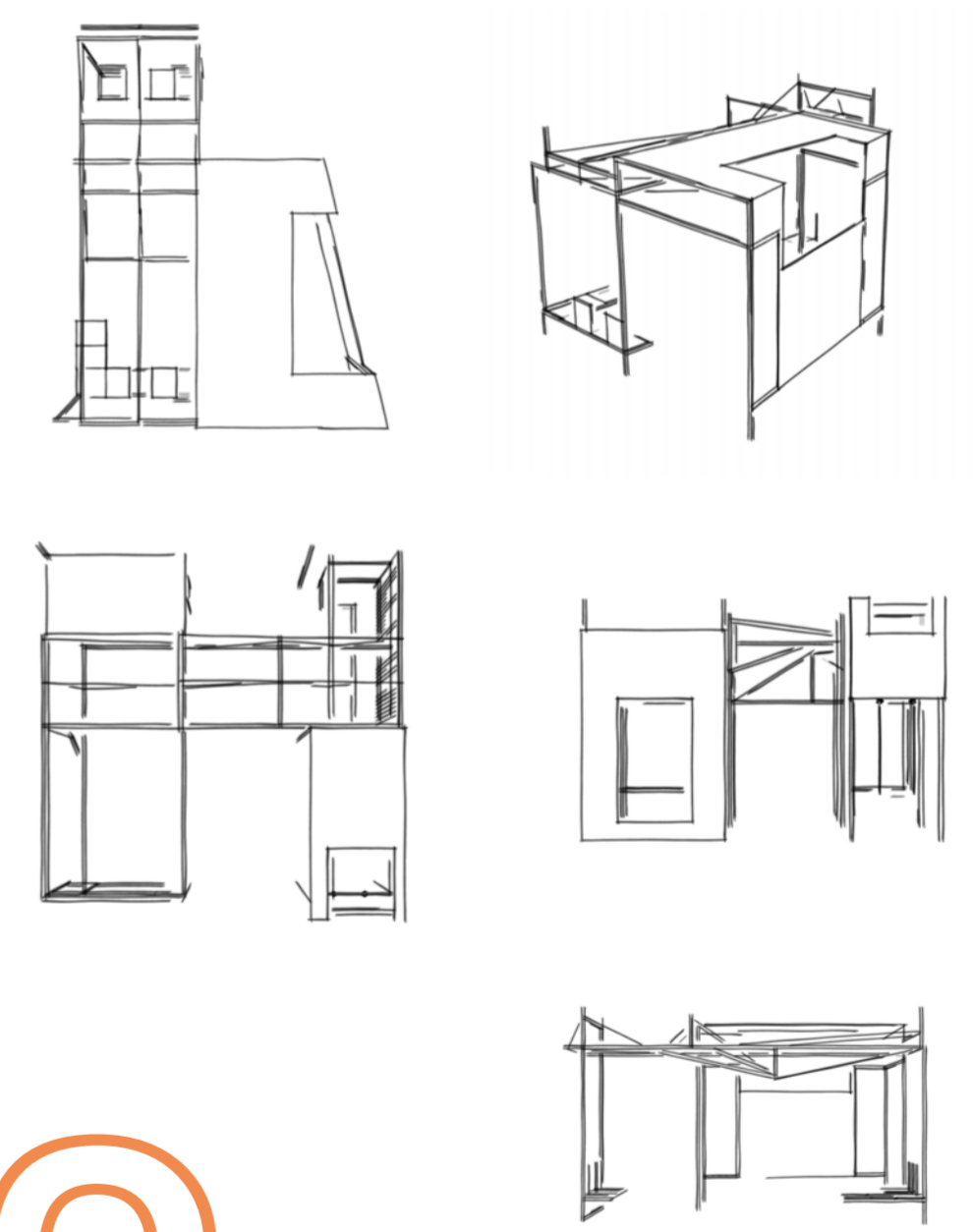


The design initially presented itself as a movable structure that could be 'plugged in' to existing acupuncture points. As I was designing this I was struggling to comprehend the reality of this idea.

I developed these abstracted shapes into canopies and began looking at how they could occupy unused spaces in Dundee.



Using the abstracted Hong Kong dragon holes shapes as floor plans instead of canopies allowed me to start building dynamic structures that met the themes of Seating and Pavilion.



02 DEVELOPMENT

TAY SQUARE



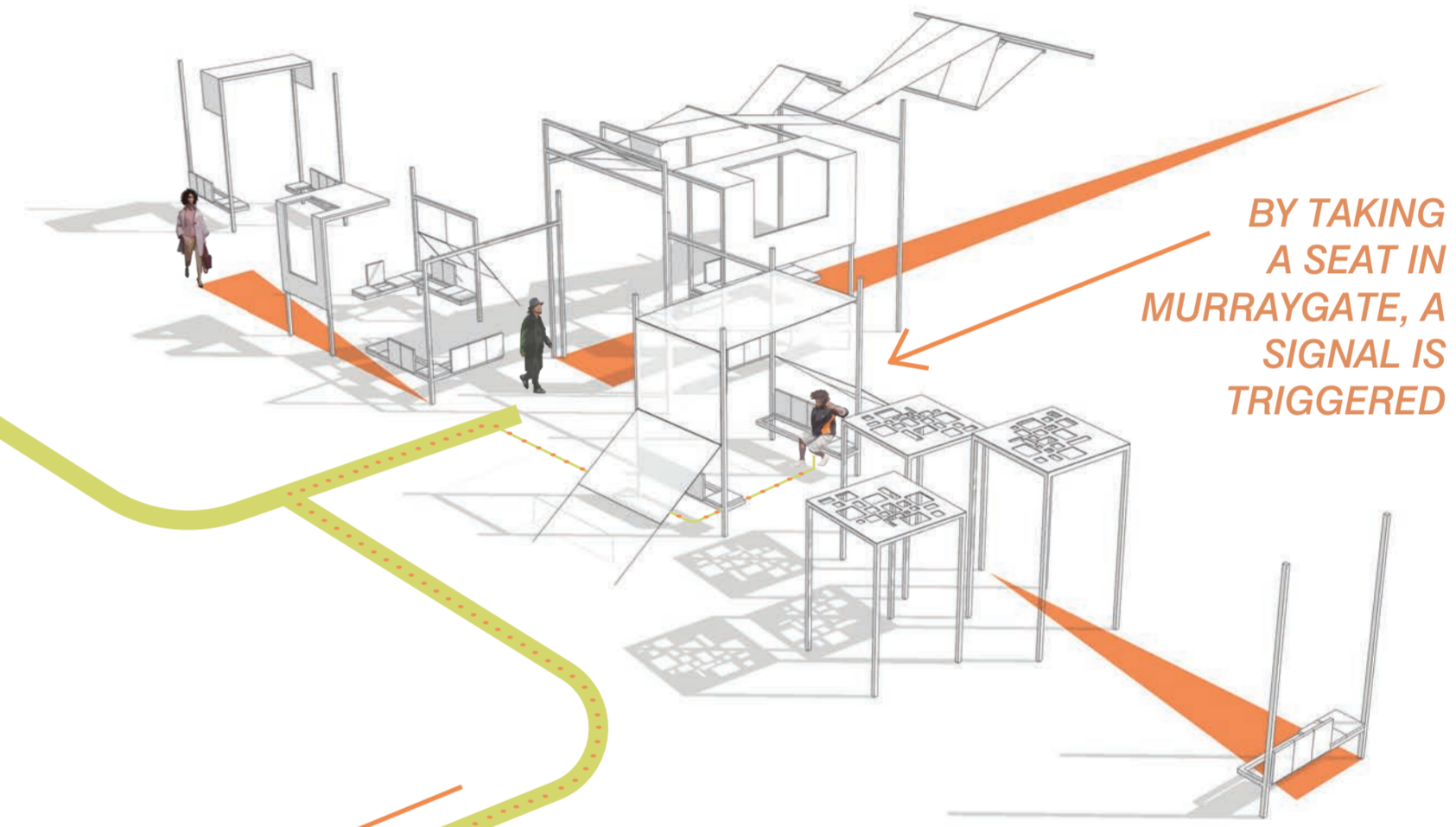
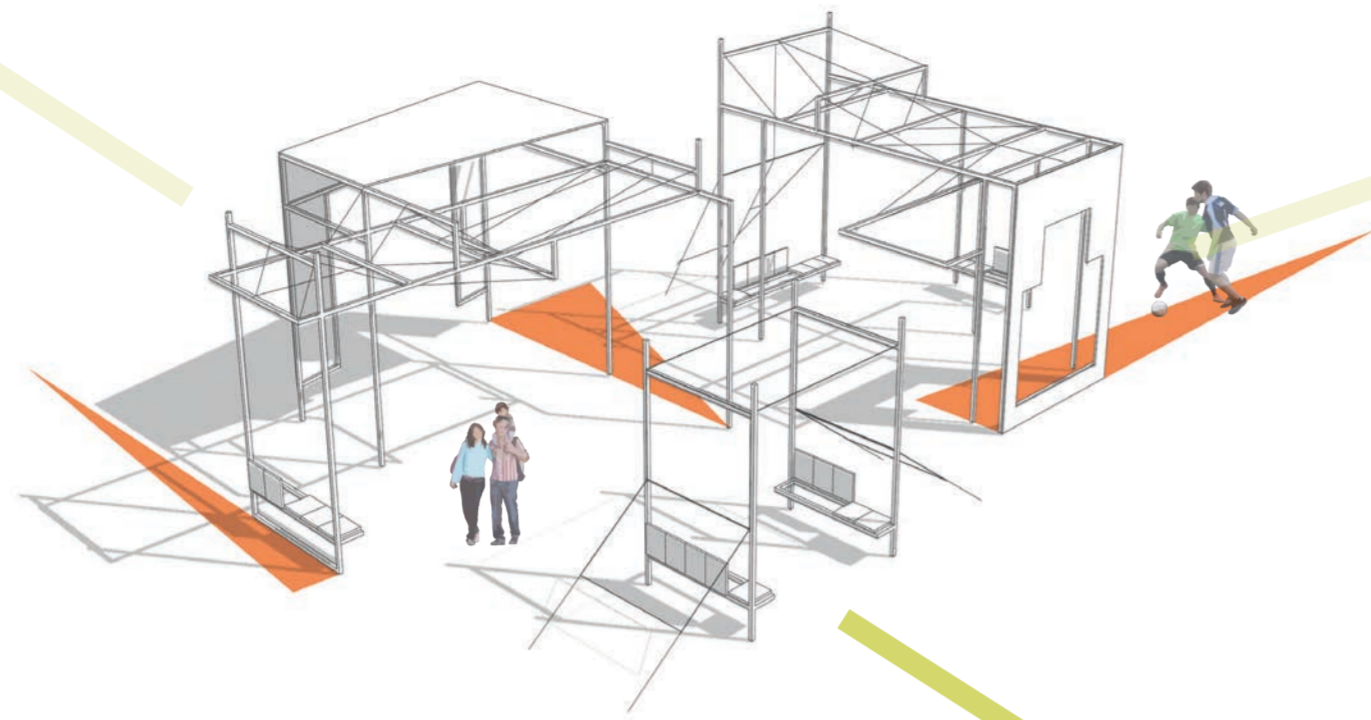
KEY :  LIGHT  SOUND

MURRAYGATE



03 FINAL OUTCOME

HILLTOWN PARK



BY TAKING
A SEAT IN
MURRAYGATE, A
SIGNAL IS
TRIGGERED



ACTIVATING A LIGHT IN
TAY SQUARE

SIGNALS TRAVEL ALONG
MERIDIAN PATHWAY

ILLUSTRATION DEMONSTRATING THE INTERACTION

The project creates a network of interactions that will breathe life into the once-thriving urban landscape, a giant interconnected jigsaw puzzle, where every piece plays a significant role in the overall scheme of things. Interaction with adjustable elements of the design will send signals across the meridian pathways, triggering sounds to play and lights to change colour making users aware of ongoing interactions beneath the urban skin.