

The Bird, The Rock & The Sea

On the scenic coast of Elie, three sites sit in the landscape, waiting to be discovered by those who explore.

The dynamic, tumultuous coast of east Fife is one of many unique habitats. From stormy cliff faces, to calm and settled bays, all ready to be explored.

Elie is one of those coasts, with a multitude of ecosystems and atmospheres. The harsh cliff faces of the famous chain-walk, to Shell Bay and its surrounding salt marshes and woods.

Scenic and beautiful they may be, they are exposed and vulnerable to elements out of their or our control, harsh trade winds and crashing waves change the landscape yearly.

Protecting these habitats, and the people wanting to explore them is an extremely beneficial situation for all parties of nature involved.

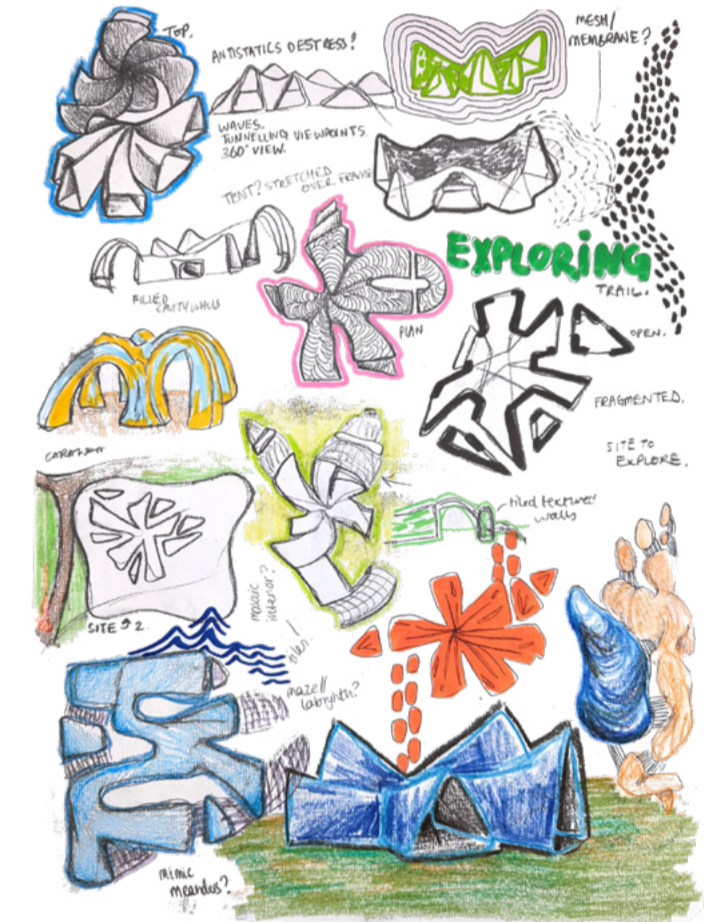
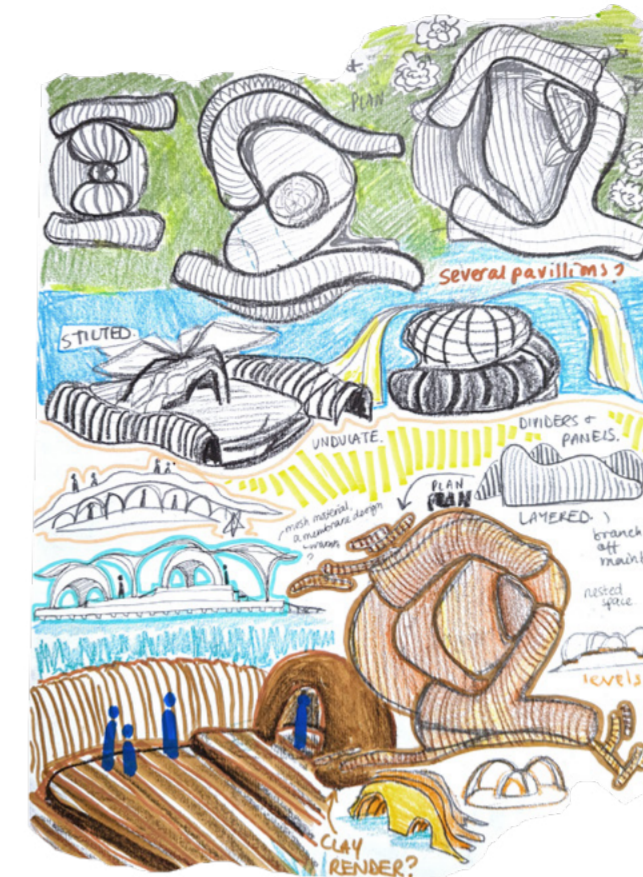
Proposing then, to create three unique, spatially exciting designs that conceptualise core elements of this coastline.



'The Bird', marking the importance of the animals and the wildlife that inhabit and make up a hugely significant part of all coastlines.

'The Rock', the amazing geology of Elie, categorised by its volcanic history and amazing discordant coastline creating a multitude of forms.

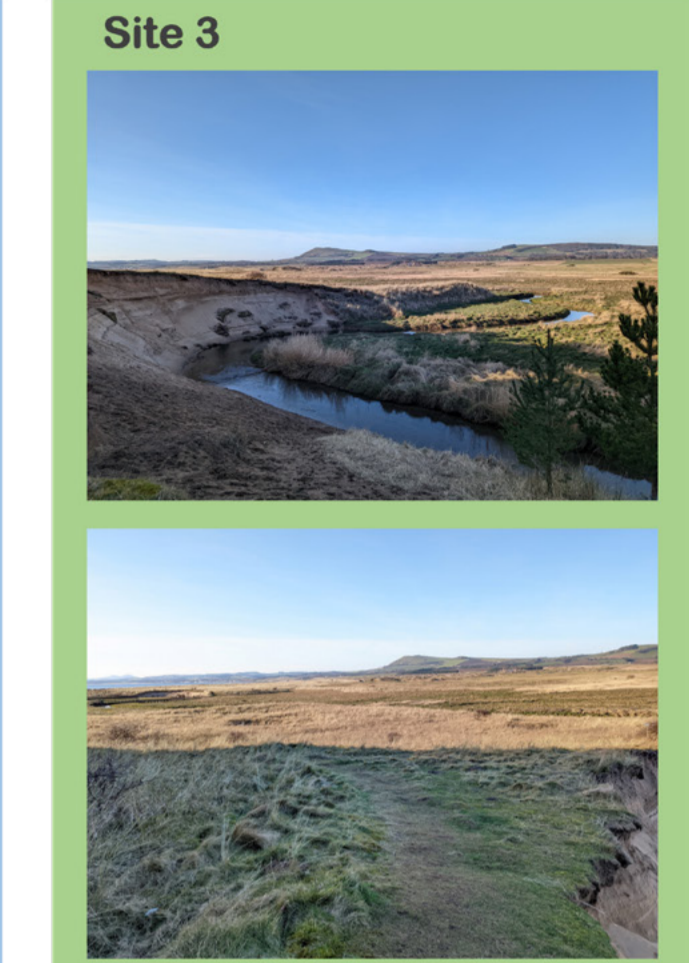
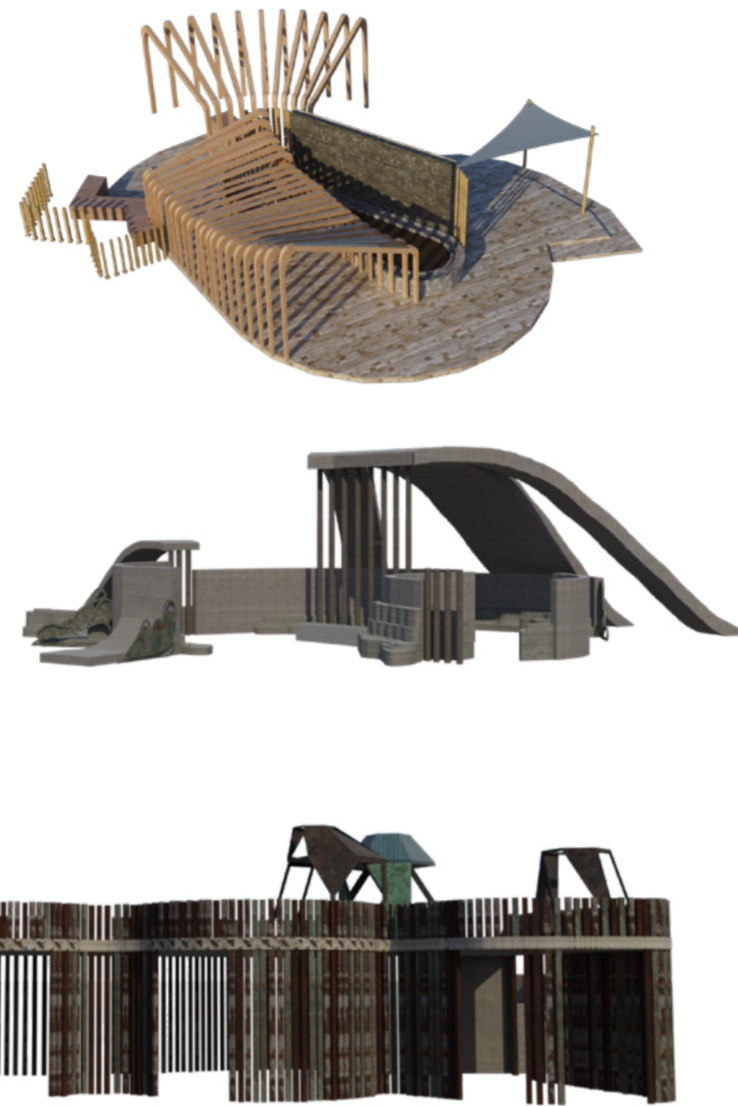
'The sea', the all powerful and influential force controlling the erosion, the habitat changing with the tide day-by-day. A force no man can reckon with.



The Bird, The Rock & The Sea



Elie & Earlsferry.



Designing spatial interventions suited to such a landscape requires great consideration into what to create, what informs the design, and who is it for. I wanted to create sites that emphasise the landscape they sit in, framing the views, focusing on the views before us. The intention was to design three sites that frame the environments they sit in, in a complimentary and effective way. Aesthetic and sculptural approaches create unique spaces that people can rest, shelter and explore in. A focus for me was creating these opportunities as along this stretch of Elie's coast there are no opportunities to sit and investigate the environment to a further degree. I wanted to create evocative sites that intrigued those who came along them, wanting to explore further. Elongating the experience they have of this environment, creating stronger, more unique memories.

One site, 'The Bird', focuses on the transparency of a viewpoint, undulating forms, and the layered complexity of the environment it sits in. Mirroring the trees beside it, the repetitive forms cast slices of light that cascade on the floor, sheltered from the elements but still able to observe all the surrounds.

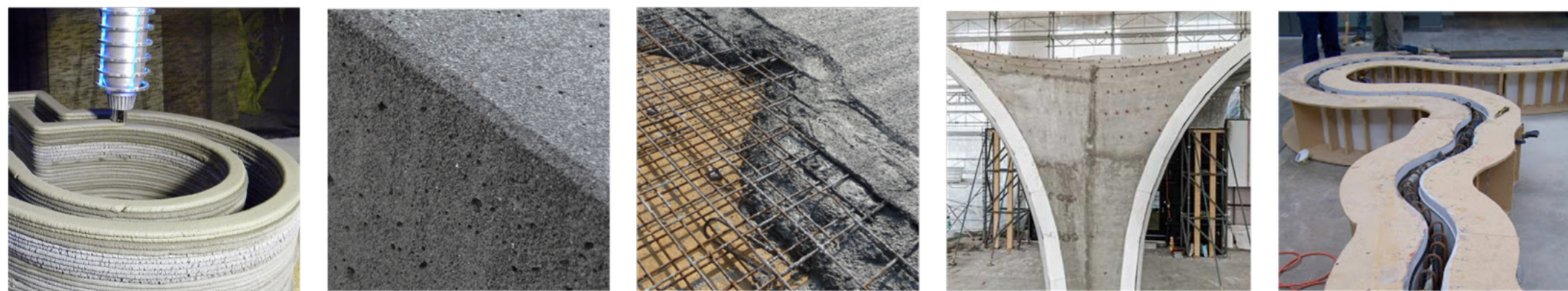
The second, 'The Rock', exemplifies the relationship of the sea and the rocks that cascade above and below the crashing waves. Curved forms contrast rocky outcrops, whilst canopies tower above, a wave waiting to crash and fall - frozen in time.

Finally site three, 'The Sea', raised above, as if on the crest of a wave, people find themselves facing out to sea. The breathtaking, seemingly endless deep blue can be observed from a height, or a sheltered below. Mock-barnacles shelter and frame views with angular forms that jut in and out of each other.

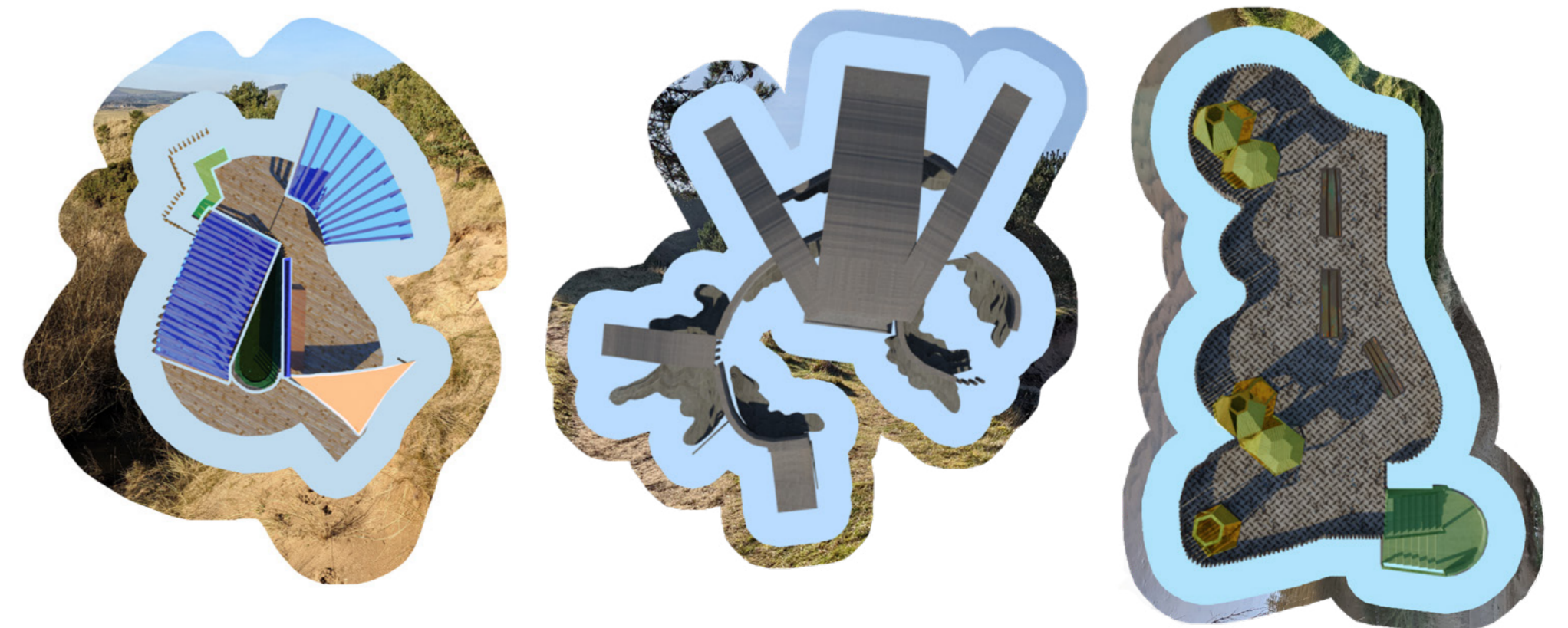
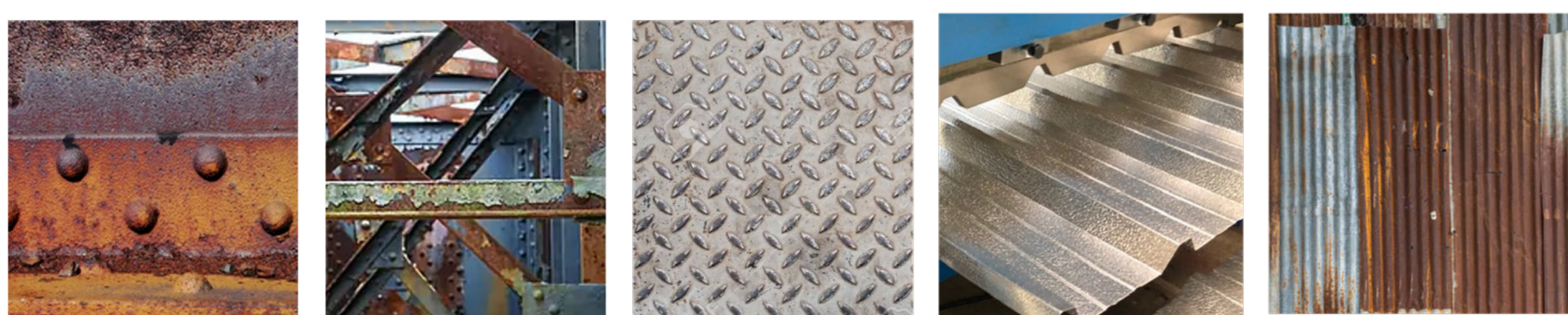
Site 1 – The Bird



Site 2 – The Rock



Site 3 – The Sea



The Bird

Contextual Visualisations



The Rock

Contextual Visualisations



The Sea

Contextual Visualisations

