

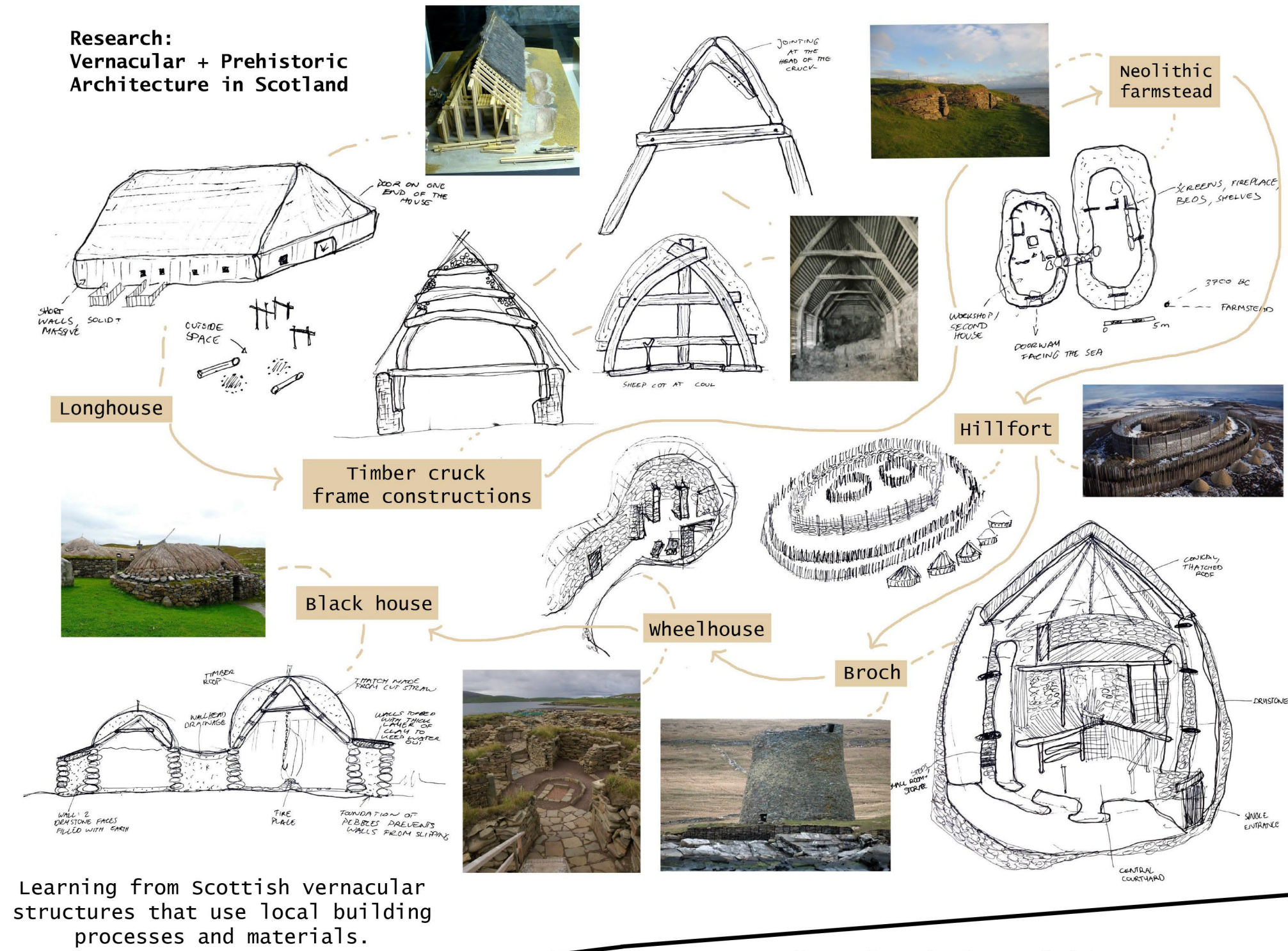




# Research: Context



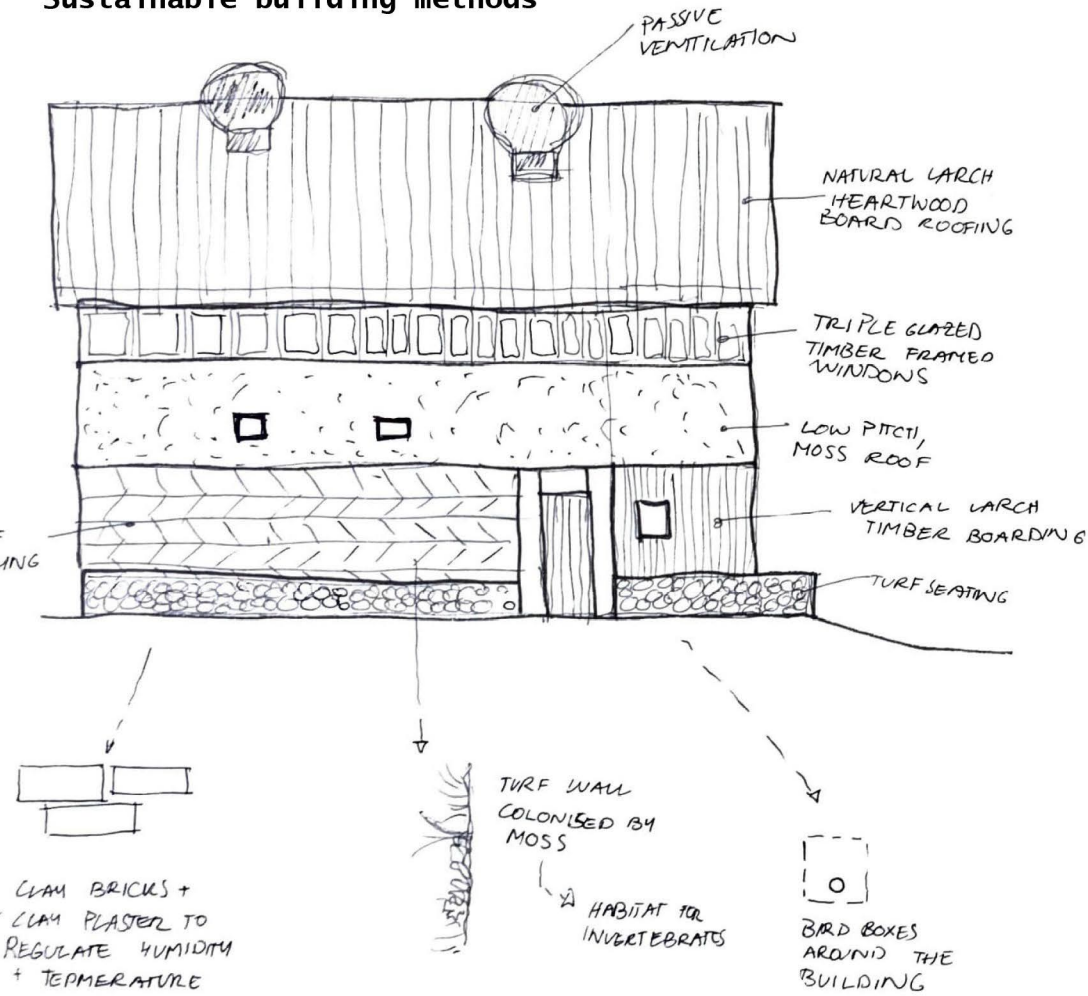
# Research: Vernacular + Prehistoric Architecture in Scotland



Learning from Scottish vernacular structures that use local building processes and materials.

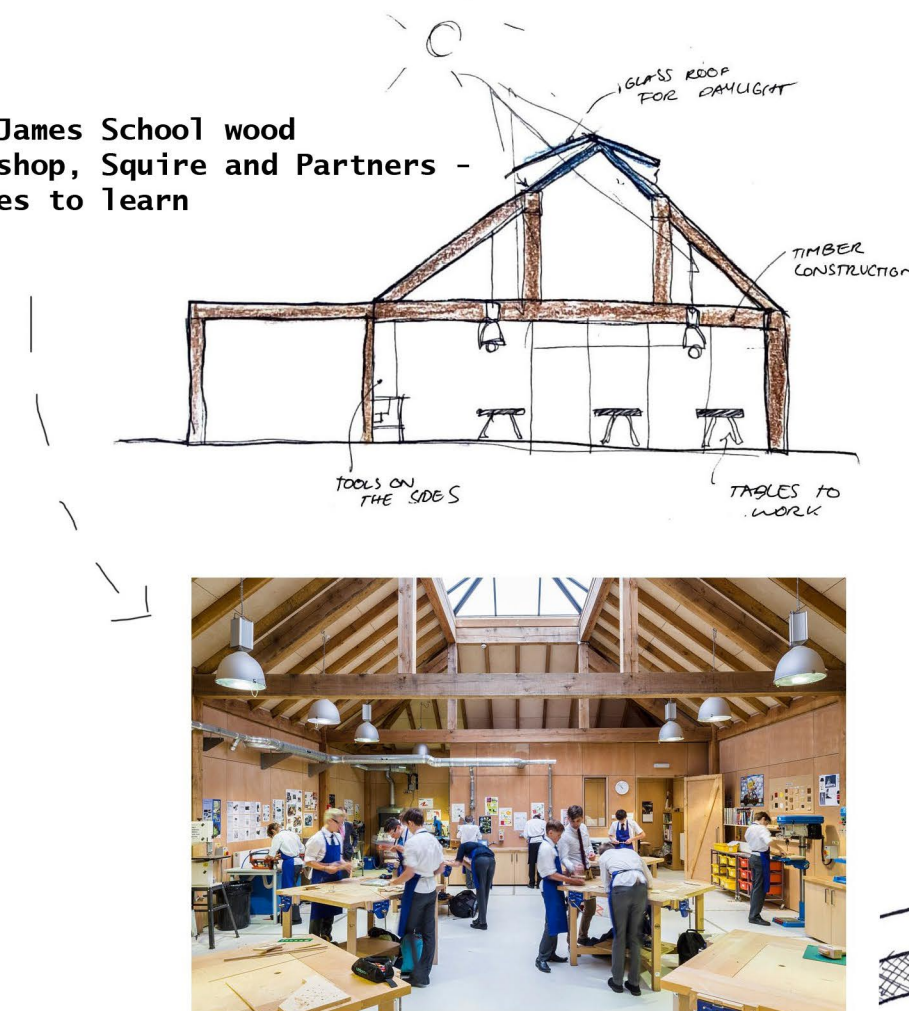
## Utilizing local materials and resources

### Blair House, Arc Architects Sustainable building methods



## Research: Sustainable Architecture in the UK

### St. James School wood workshop, Squire and Partners - Spaces to learn



Raasay Community Center, Dualchas The 'modern' Longhouse

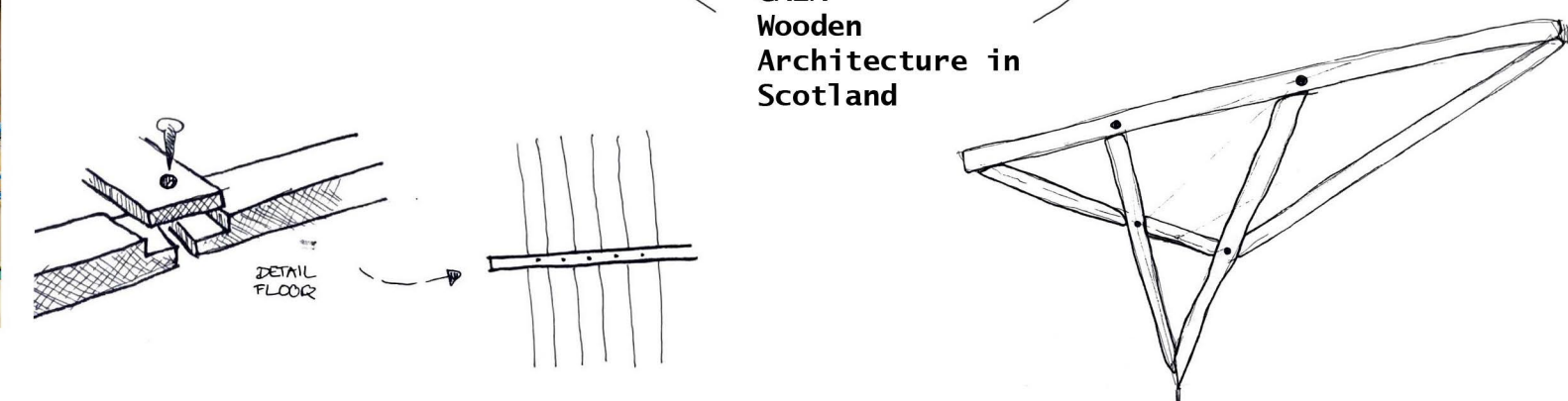


Glencoe Visitor Center



Glentress Visitor Centre

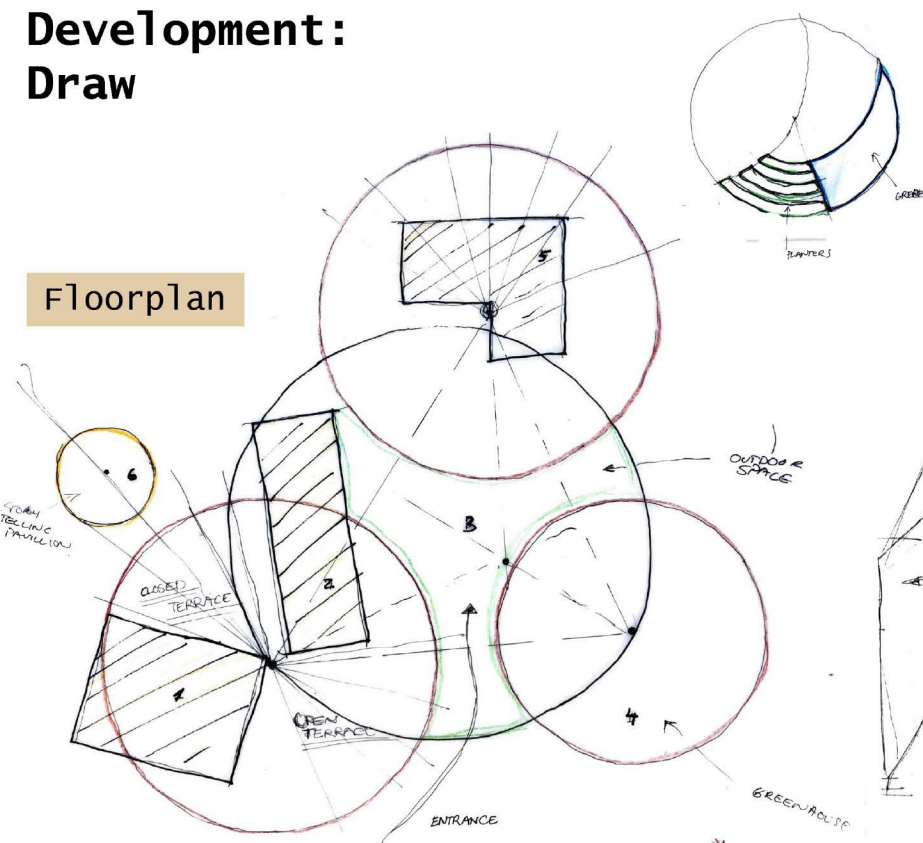
### GAIA - Wooden Architecture in Scotland



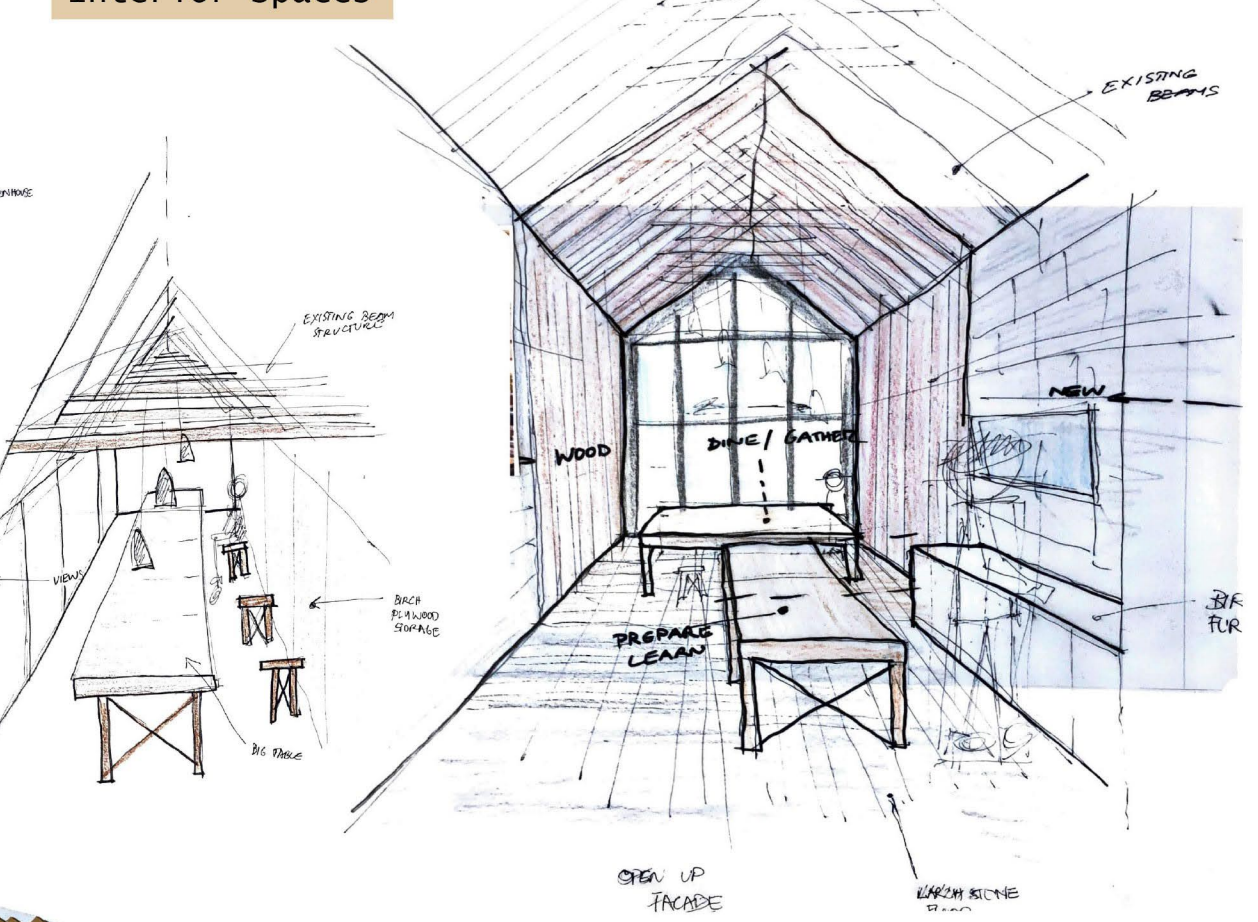


Development:  
Draw

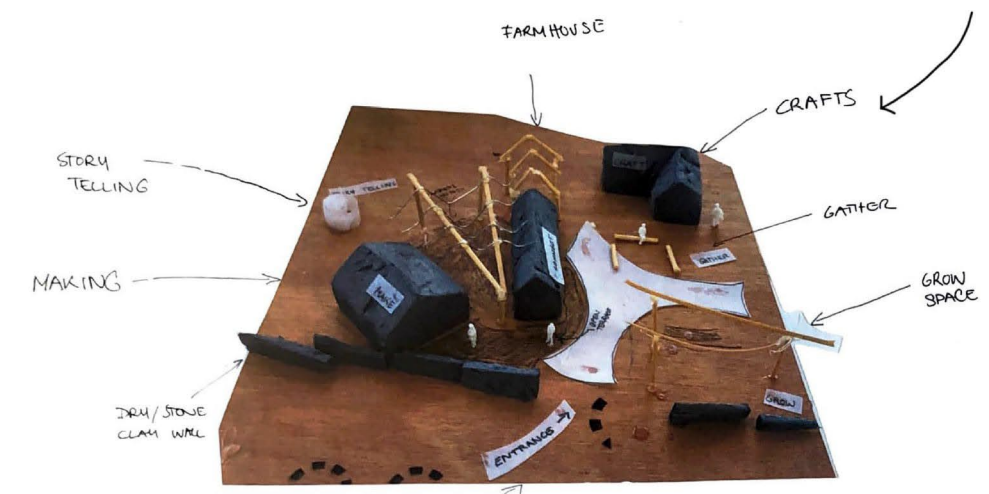
Floorplan



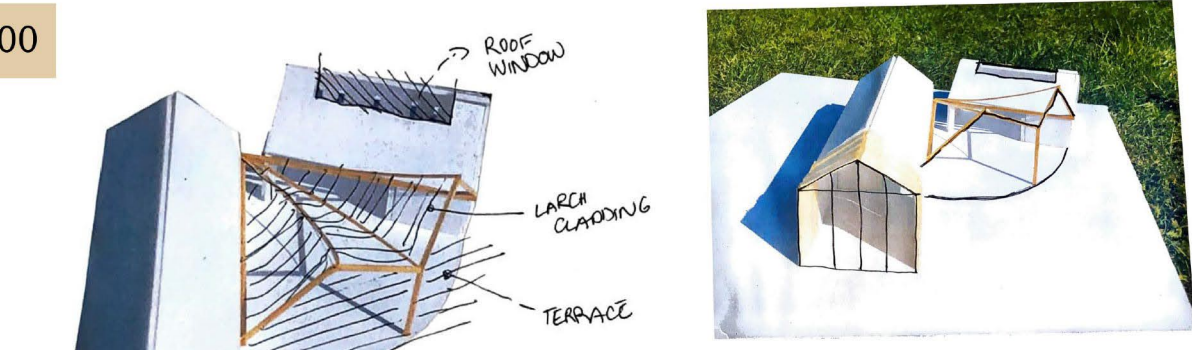
Interior Spaces



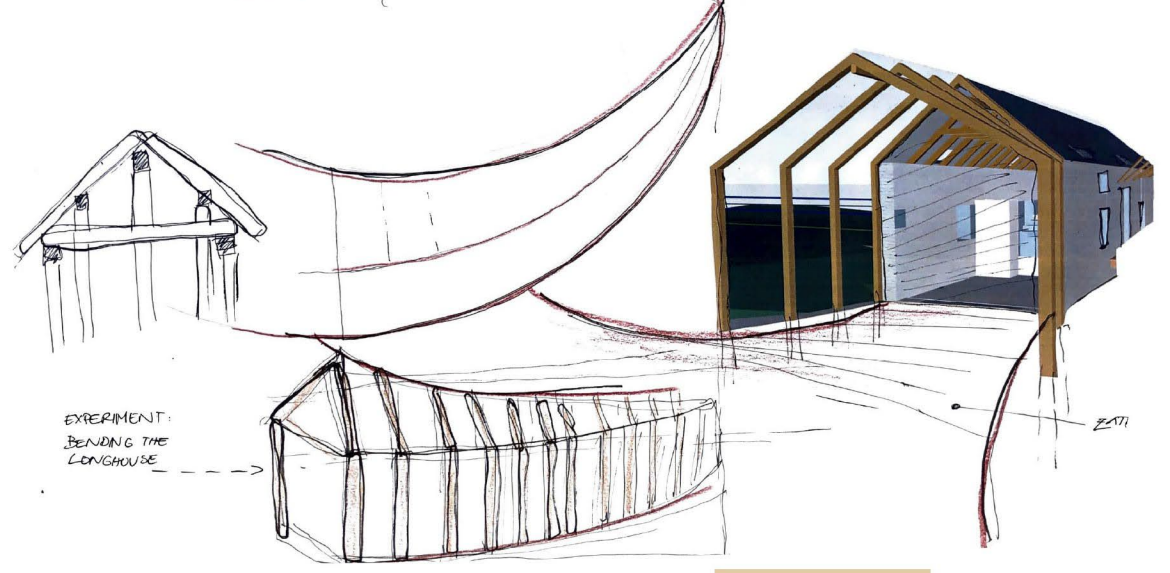
Development:  
Make



Model site 1:200



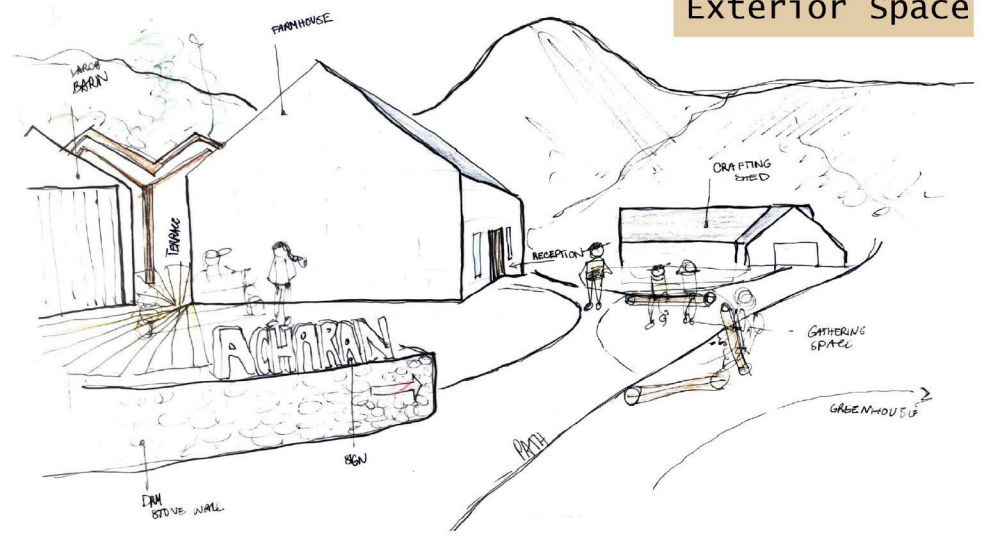
Model site 1:100



Structure

Model scale 1:50

Exterior Space



Sensible Interventions

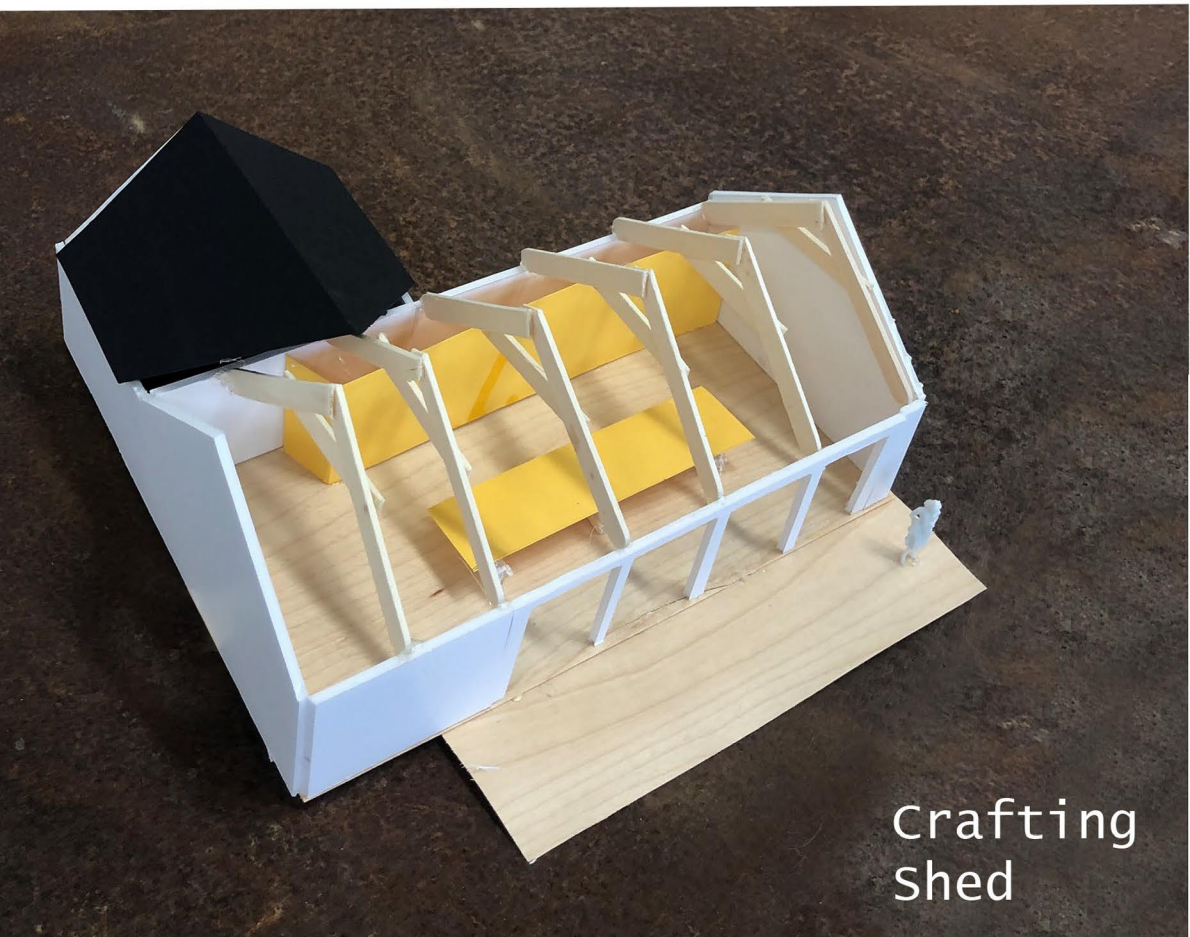


Model The Nest 1:20

Model Greenhouse 1:20

Model Terrace 1:50

Birch and larch wood as key materials.



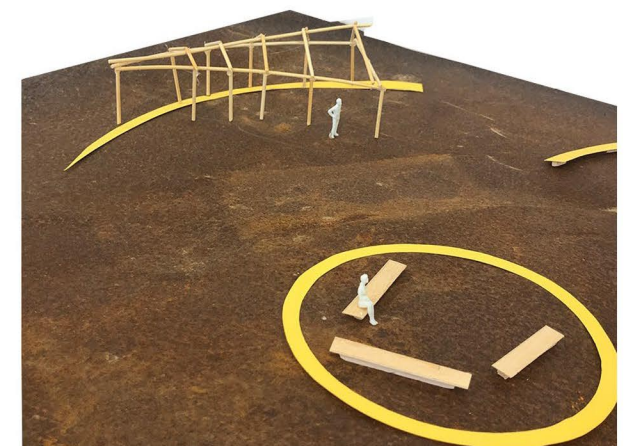
Crafting shed



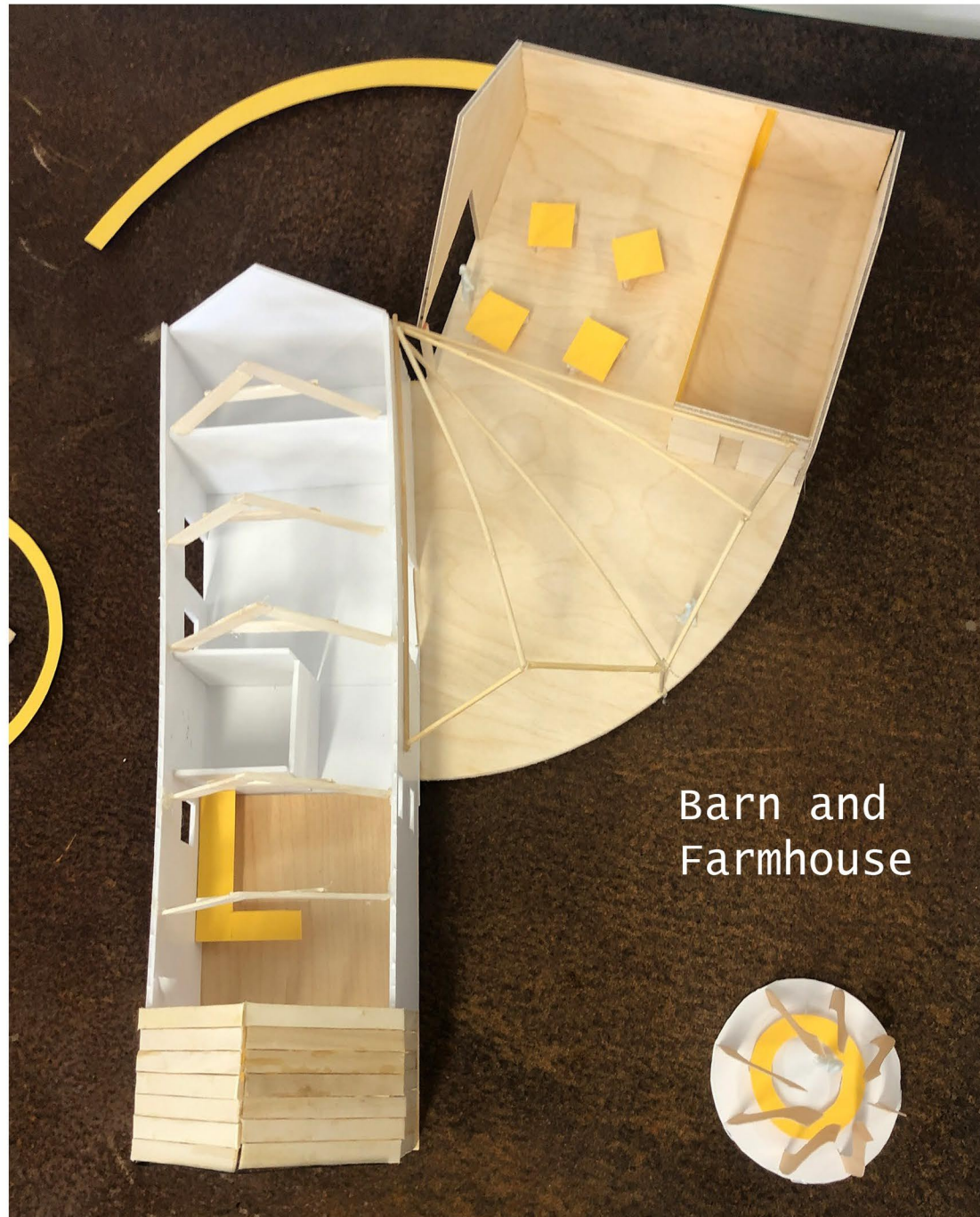
Top view



Terrace



Greenhouse



Barn and Farmhouse



# Site Proposal

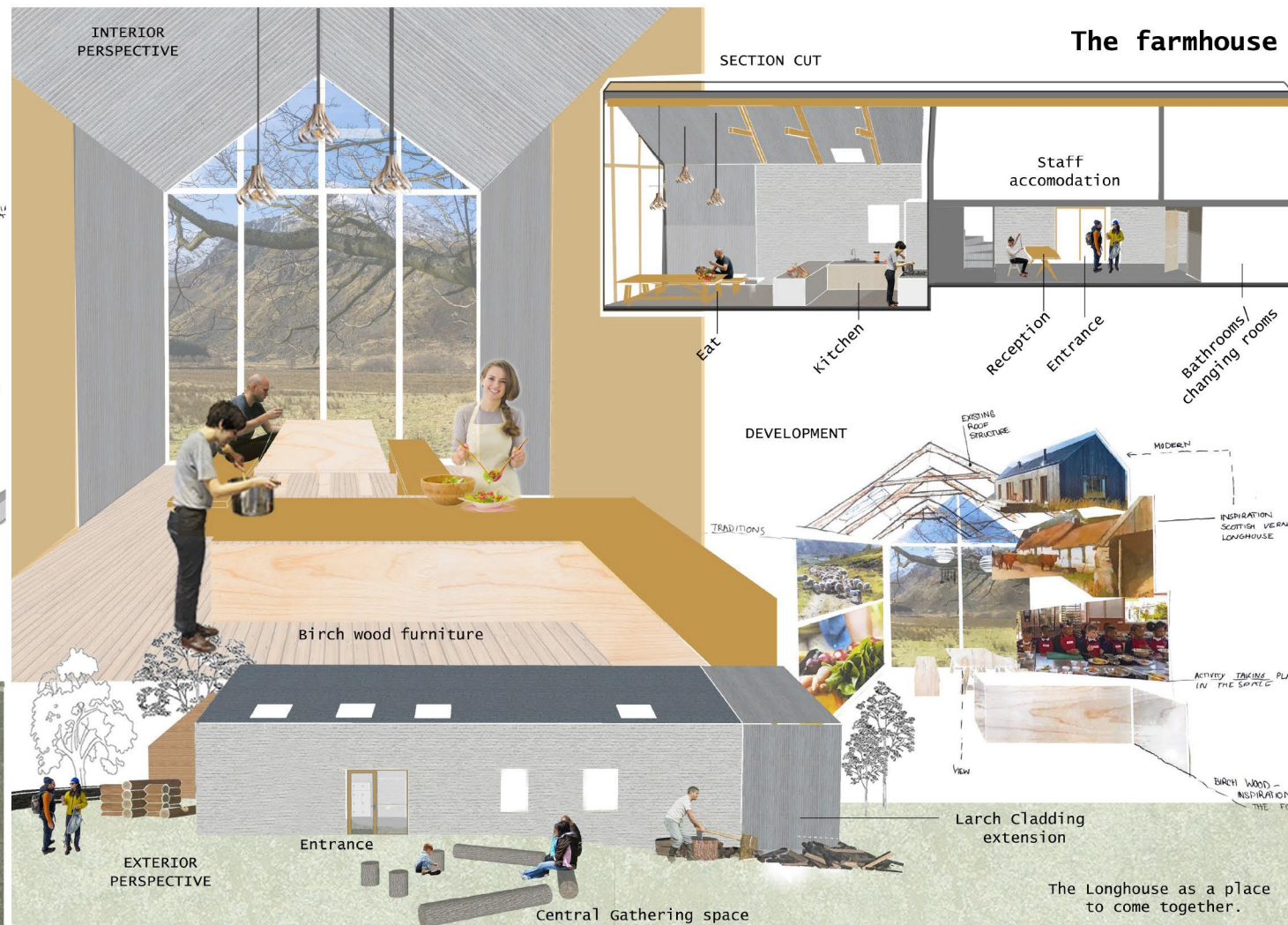
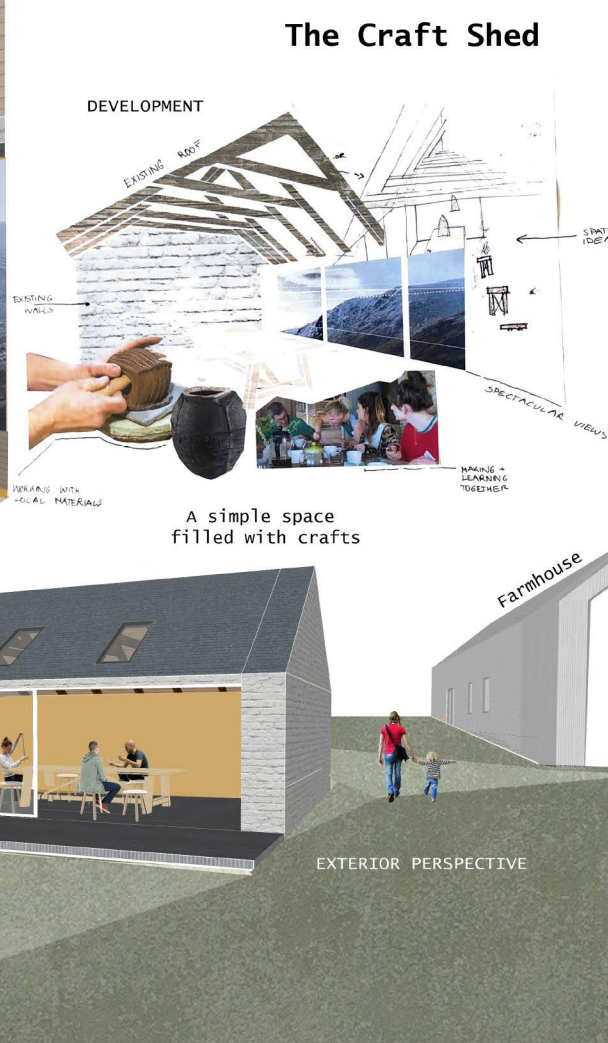
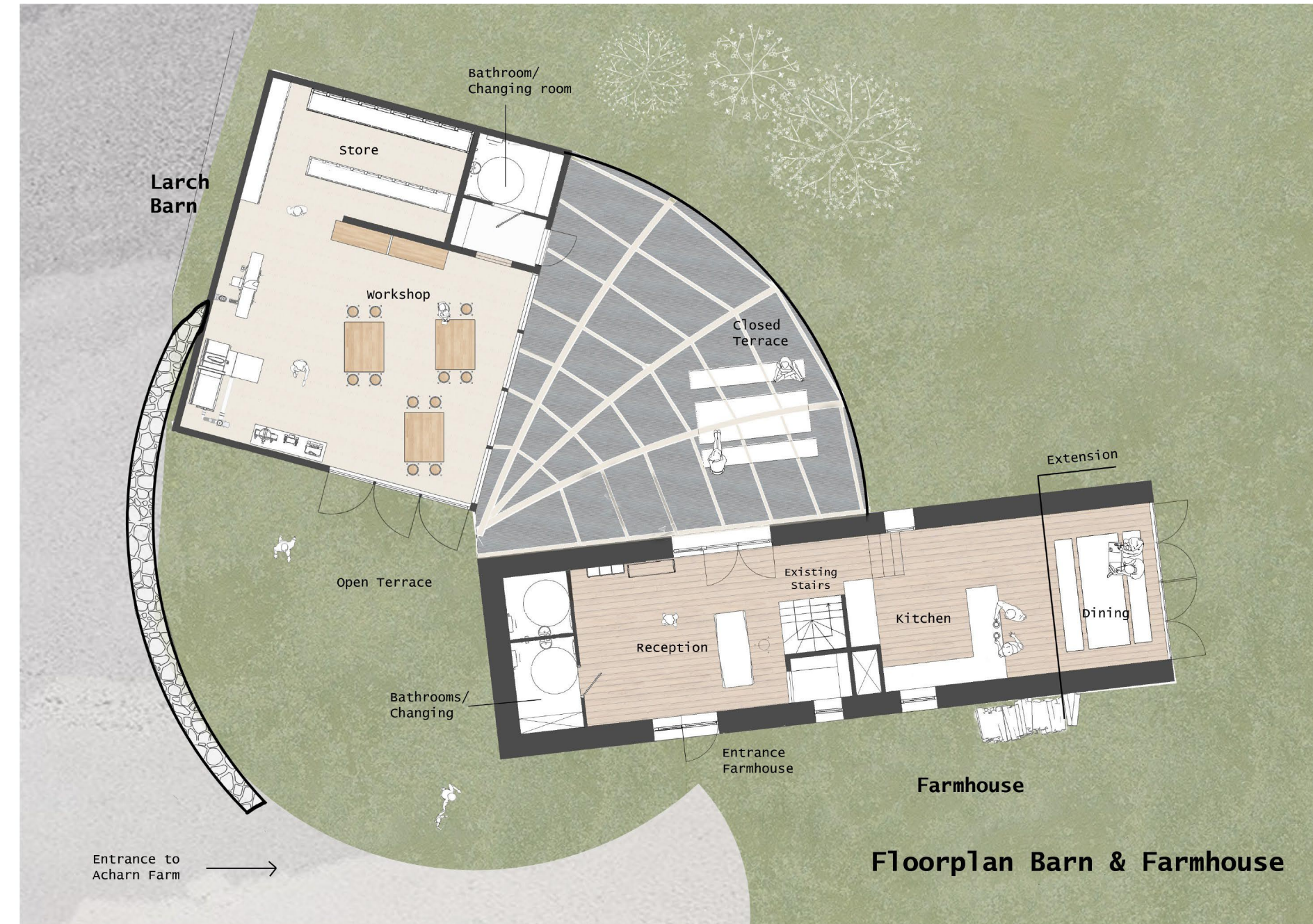
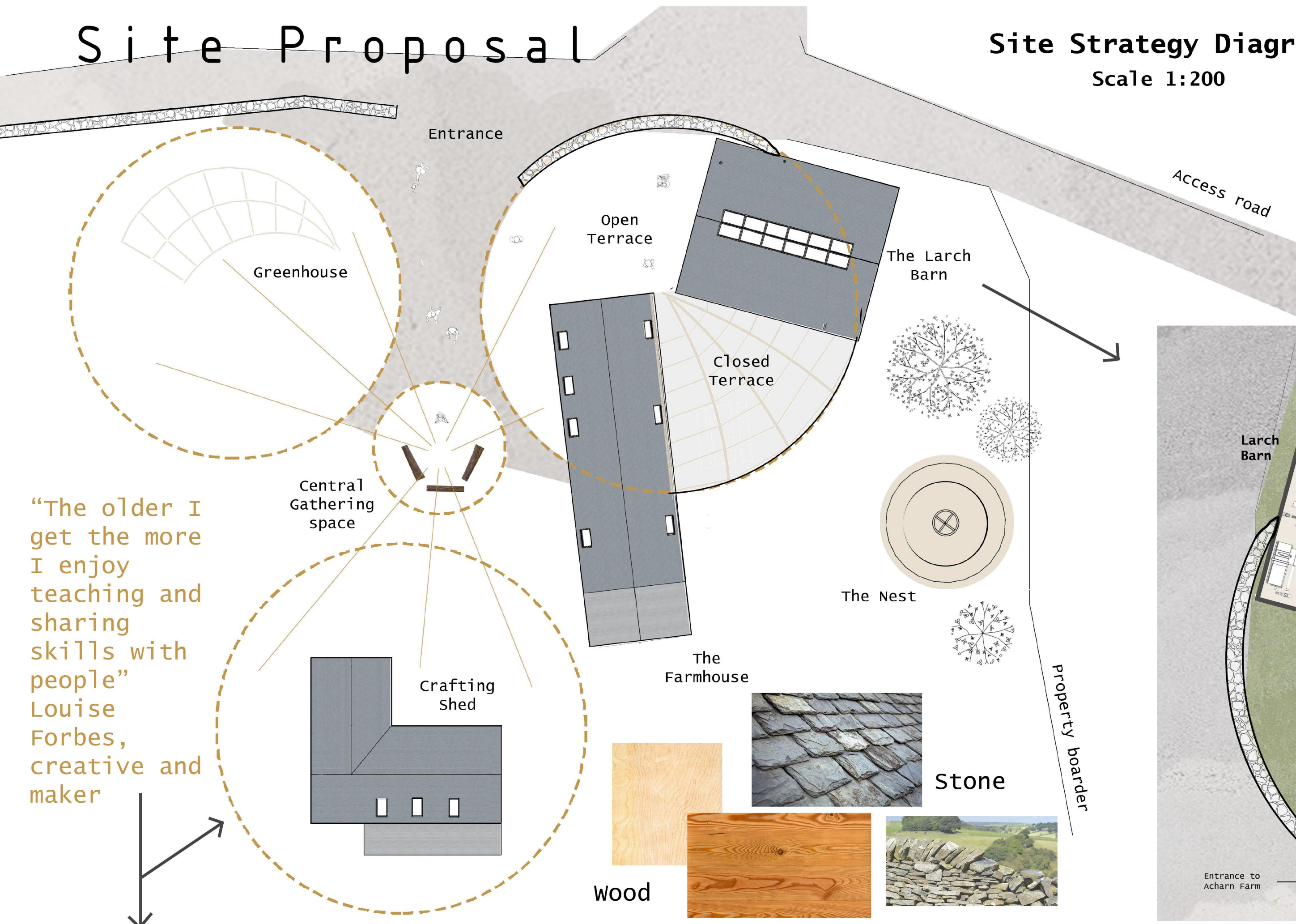
## Site Strategy Diagram

Scale 1:200

## LOCALLY SOURCED MATERIALS

Materiality plays a key role in the design, the contrast between the larch and birch trees, and the rock scree and cliffs informs both the material-based activities in the space and also its design.

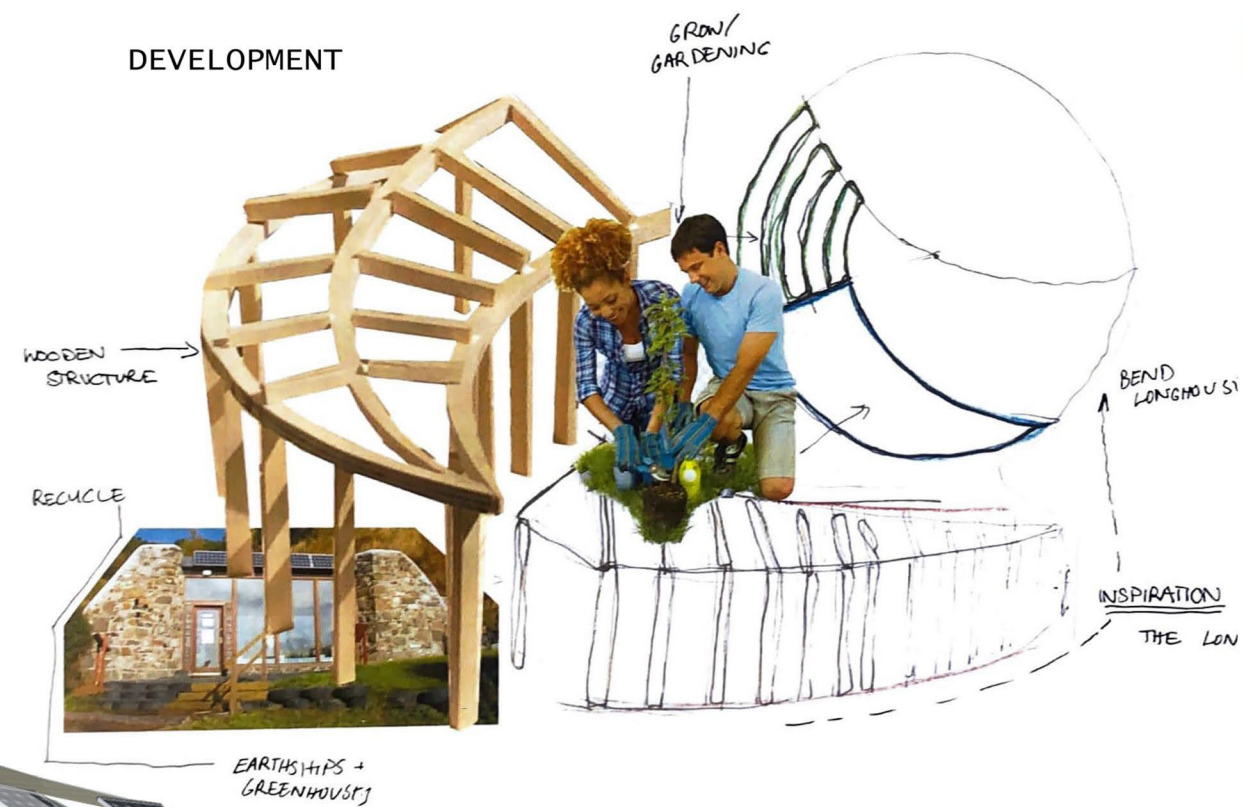
“The older I get the more I enjoy teaching and sharing skills with people”  
Louise Forbes, creative and maker





# Site Proposal

## The Greenhouse



## RISING AWARENESS

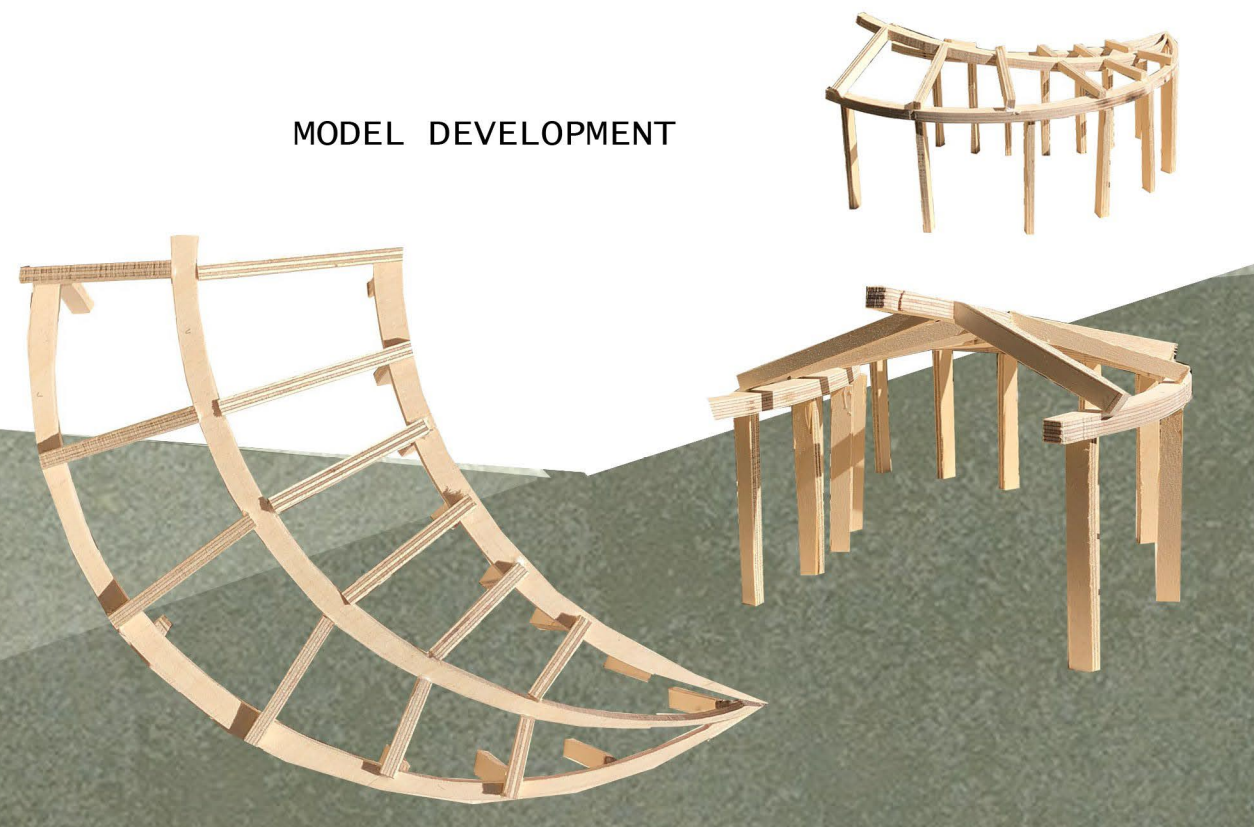
“A lot of scottish farmers struggle today because people are not willing to spend more on local products.”  
Liam Aiton, young crofting farmer from the highlands

## INTERIOR PERSPECTIVE



A solar powered greenhouse that allows vegetables to grow all year around

## MODEL DEVELOPMENT



“Showing people things on a smaller scale can fundamentally impact their thinking about materials and sustainability”  
Daniel Postma, Archeologist and builder

## The Terrace

Bend spruce structure

Exploring the view

Tables and seating

Larch floor



Terrace viewed from South



A space to work outside when the weather is bad.

## The nest

A tory telling pavilion

