

THE FOUR COGS

A system of four gas tanks working together to produce progressive and joyful dining, accommodation & growing hub experiences for the future of the city.

Project nuts & bolts

Forming a new narrative for the hospitality industry, 'The Four Cogs' is a regenerative hospitality space operating alongside Eden Project Dundee. Inspired by mechanical cogs, the space acts as a series of cog platforms that function as catalysts for social joy, each floor allows guests to experience a new hospitality destination. All four of the cylindrical structures working together in motion, mimicking working cogs, to produce a successful hospitality vessel. The site for this proposal is positioned on East Dock Street, which is just half a mile East of Dundee's city centre, known as 'The Gasworks.'

A sustainable recipe

The Four cogs aims to allow nature and communities to reclaim the space whilst being part of Dundee's growing future supporting Eden's sustainable ethos. Adaptively reused, retained elements of the bolted metal exterior feature past significance of the original site and is also reflected in areas of the interior. This celebrating the existing gas tank material structure and how it can be reused supporting environmental pressures, whilst allowing an exciting focus towards a movement of change and improvement to adapting an industrial forgotten space. Re-connecting the site with life and the introduction of surrounding new green spaces which will help improve the city's biodiversity and promote natural recovery, as well as human wellness.



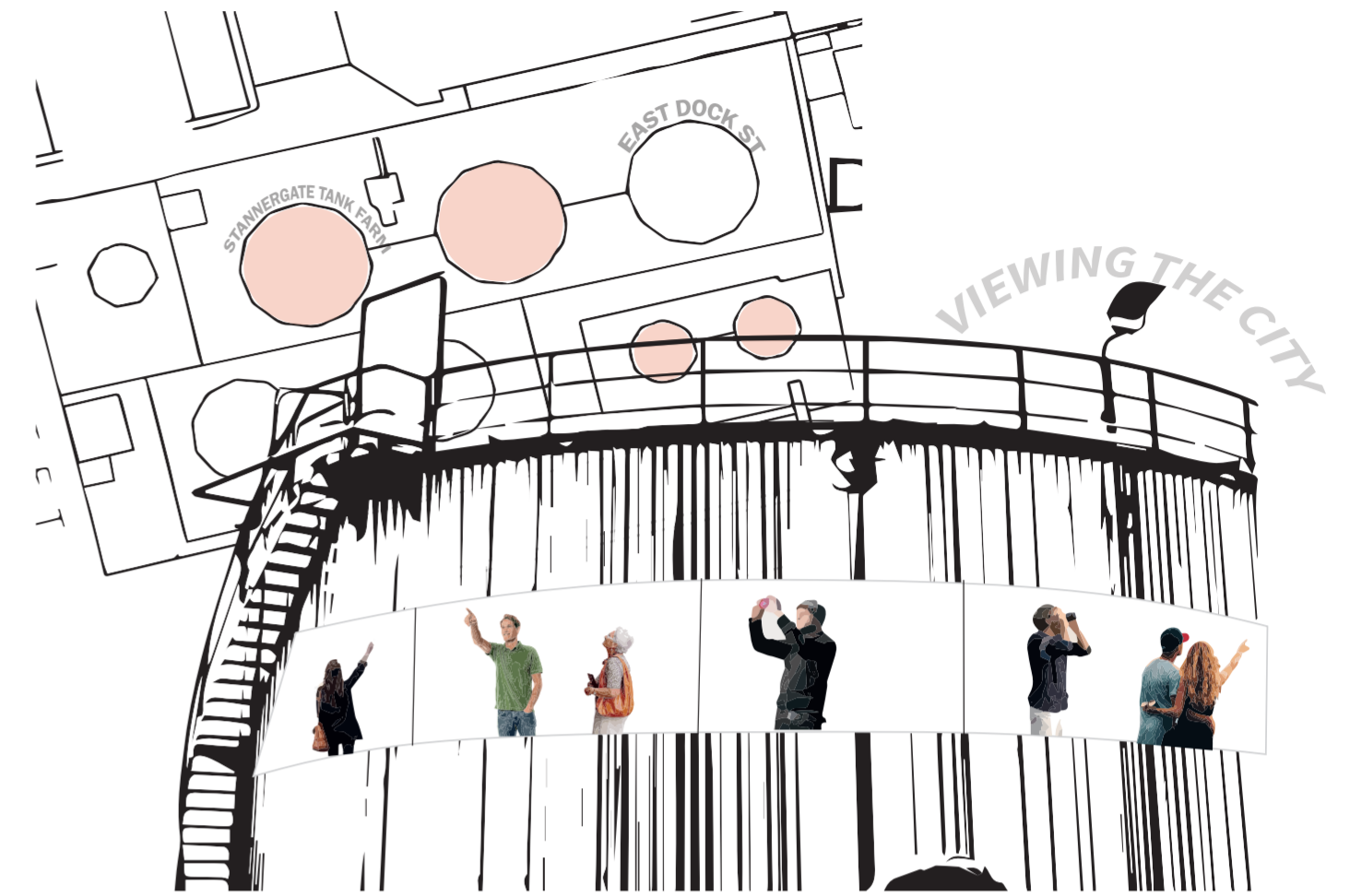
The hospitality core - Dining & Bar space

Materiality

- 1. Natural wooden poles & panels
- 2. Cog teeth inspired dining sections containing natural sandstone
- 3. Retained grey bolted metal panels
- 4. Grey solid wood flooring
- 5. Self designed pull away cog teeth inspired bar stools - natural wood elements
- 6. Terracotta tiles - kitchen pass base unit
- 7. Earth tone clay plaster

New green spaces

Existing site plan



Re-energising an industrial heartland of the city and allowing visitors to not only experience the sites delights, but viewing the developing waterfront landscape of Dundee from within the site itself. The progression towards a climate supportive city where Eden can make its home within Scotland.

Rooftop garden where nature can thrive

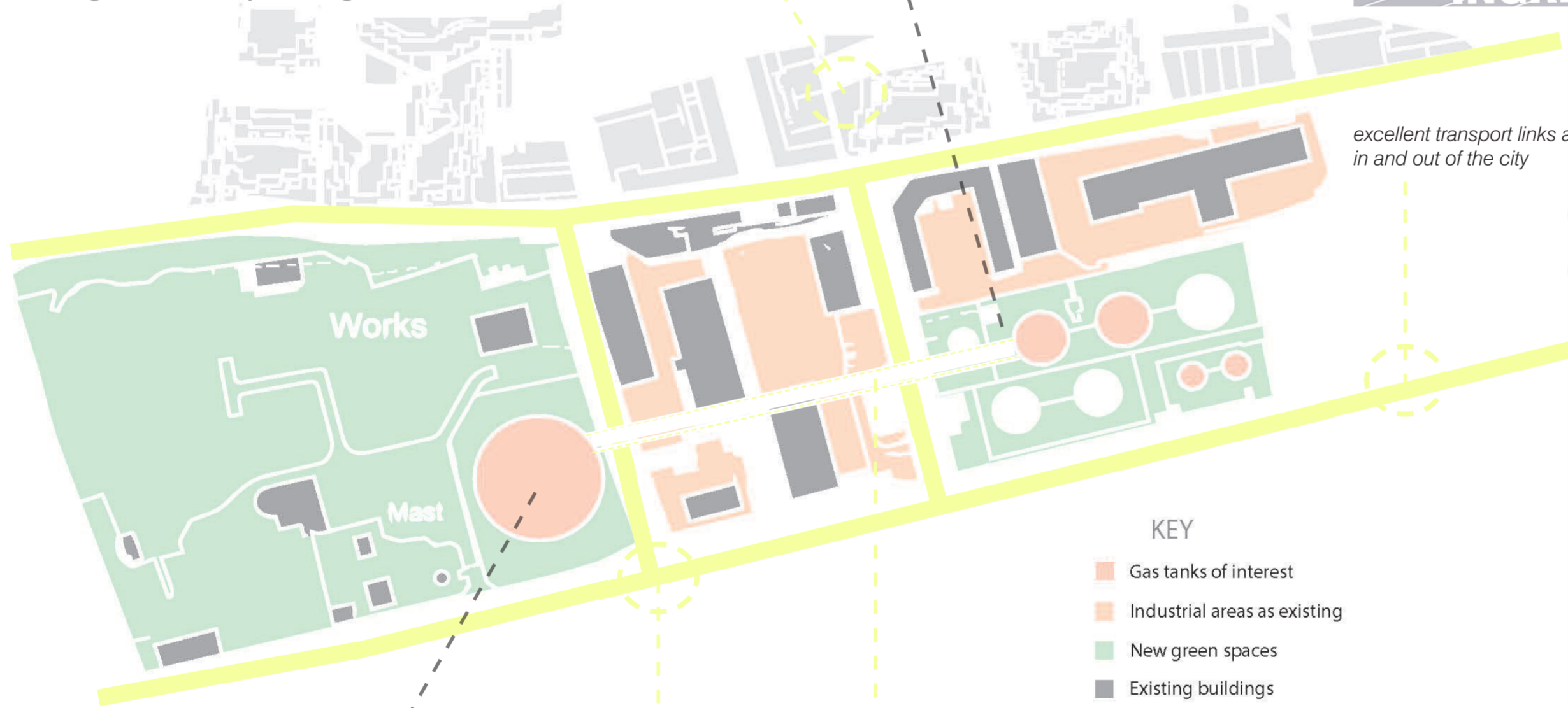


THE SITE

The chosen site for The Four Cogs design proposal

Neighbouring communities experiencing *environmental impact* of life brought back to industrial site

Existing site masterplanning



excellent transport links allowing visitors in and out of the city

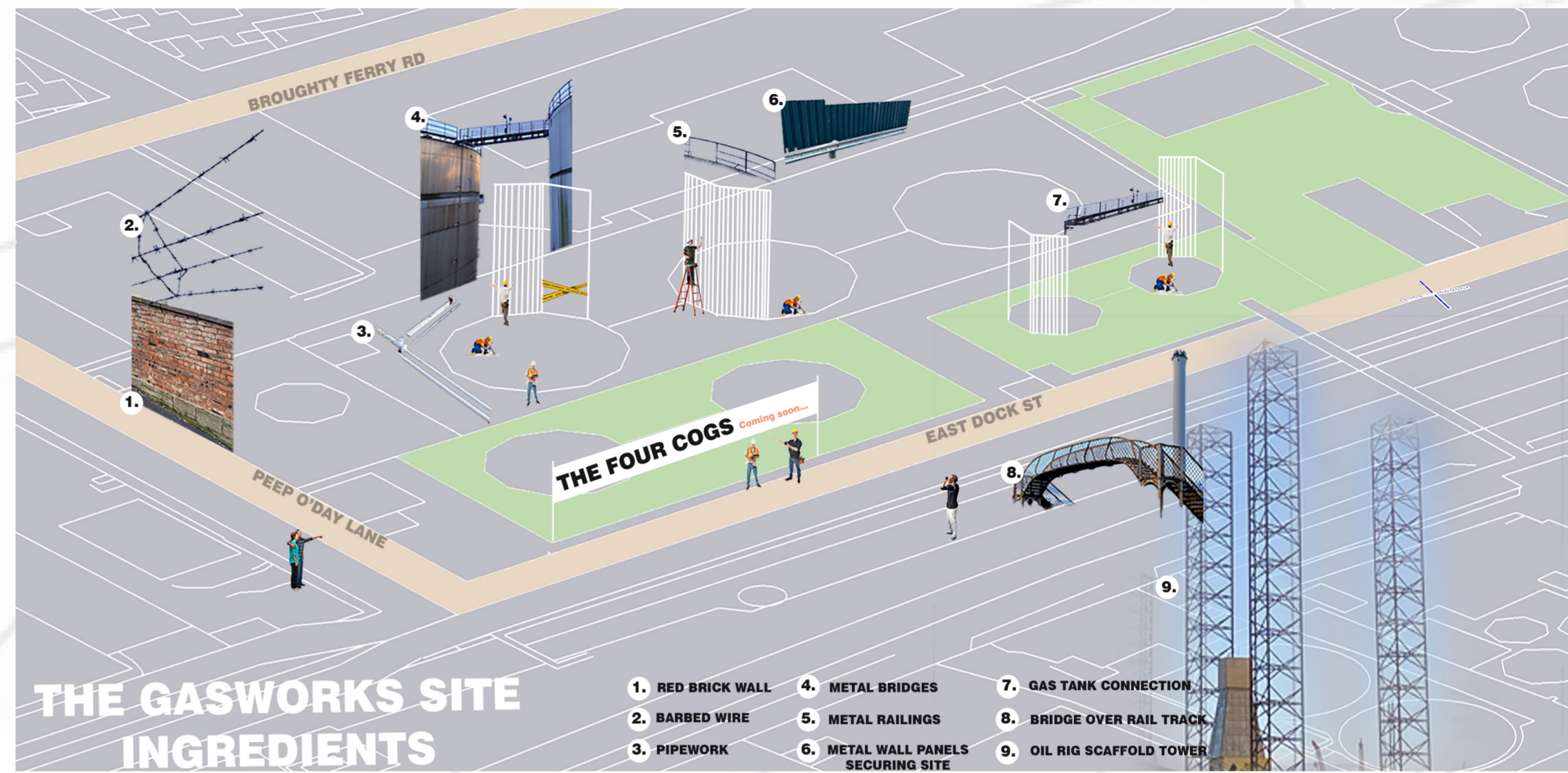
KEY

- Gas tanks of interest
- Industrial areas as existing
- New green spaces
- Existing buildings
- Housing

New pedestrian walkways introduced to encourage travel on foot and connection to the city

New bridge connection between The Four Cogs & Dundee's Eden Project - forming a new walk/cycle path

The Eden project Dundee



THE GASWORKS SITE INGREDIENTS

- | | | |
|-------------------|------------------------------------|---------------------------|
| 1. RED BRICK WALL | 4. METAL BRIDGES | 7. GAS TANK CONNECTION |
| 2. BARBED WIRE | 5. METAL RAILINGS | 8. BRIDGE OVER RAIL TRACK |
| 3. PIPEWORK | 6. METAL WALL PANELS SECURING SITE | 9. OIL RIG SCAFFOLD TOWER |

THE FOUR COGS

The Eden project Dundee

Cog's restaurant

Spatial shadows

The Bridge to Eden

New glazing panels allowing guests to view the city and its landscape & environmental progression

Dining areas designed using natural materials

New dining areas forming as an extension of the existing gas tank cylinder structure

Ramp access

Rooftop garden party

The Growing Hubs isometric

Pop-up market

Vertical growing

The growing hubs complete the hospitality system and are essential for this working concept. Working with 'hospitality haven,' fresh vegetables, fruit and herbs are grown on site and are then sold at pop-up markets where the outdoor balcony areas form as local produce selling areas and will also be taken over to hospitality haven where ingredients will be used to help form dishes of the restaurant menu. The fresh produce used within the restaurant will create a new location supplying local produce for the city.

The vegetable patches form cog tooth elements and the opportunity for vertical growing is also apparent. The large glass panels act as a greenhouse which furthers the process of the interior growing patches.

Branching off from 'hospitality haven,' situated on the third floor, the rooftop garden party space, allows guests to make their way across to the home of Eden within Dundee. The bridge transports guests to a whole new regenerative destination and encourages people to take the journey on foot which supports a healthy lifestyle and wellbeing, this connecting to Eden's ethos. The lift central to all four floors and acting as the spine of the building, allows guests of all abilities to enjoy the bridge concept.

1.

2.

The Bridge to Eden

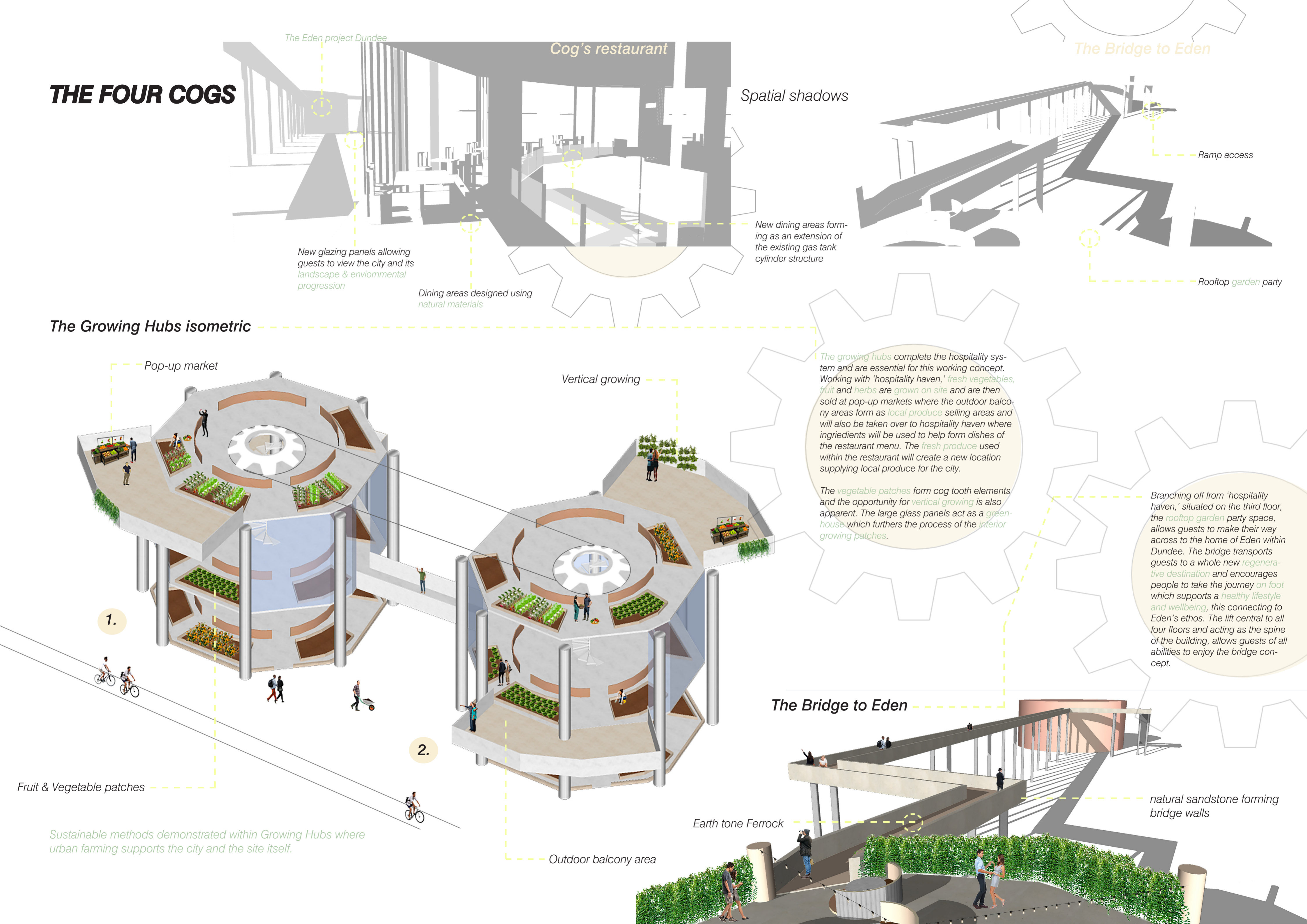
natural sandstone forming bridge walls

Earth tone Ferrock

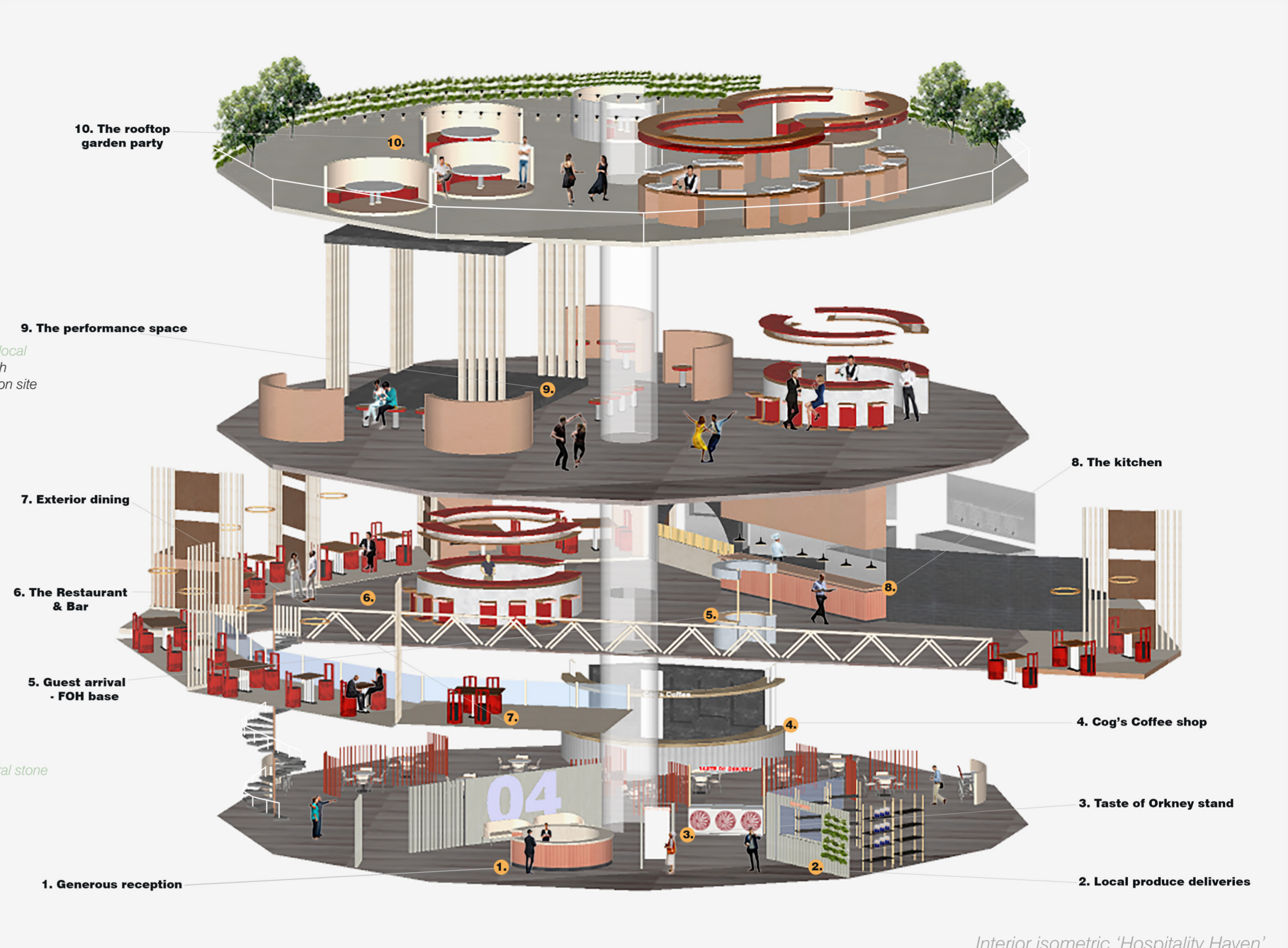
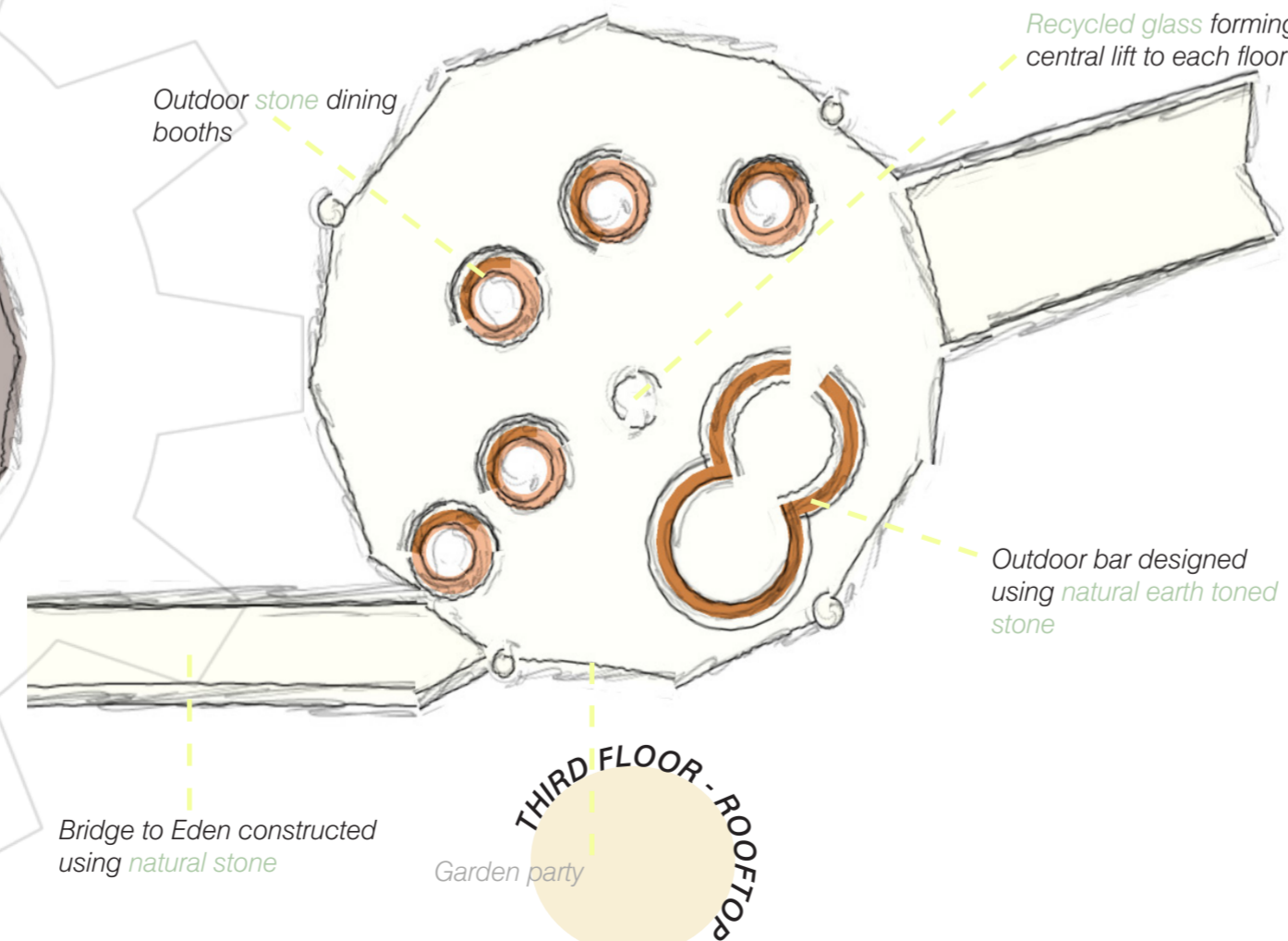
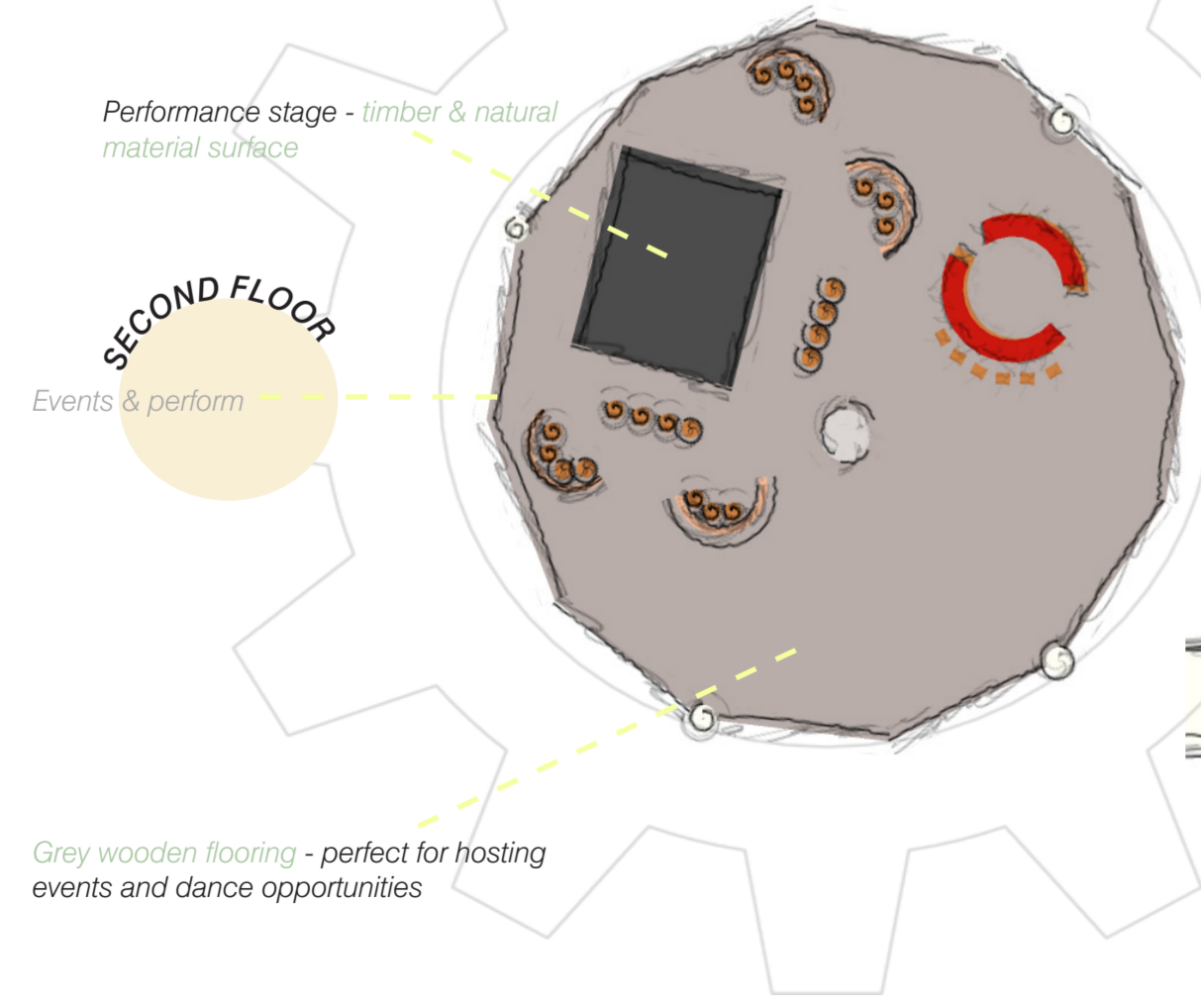
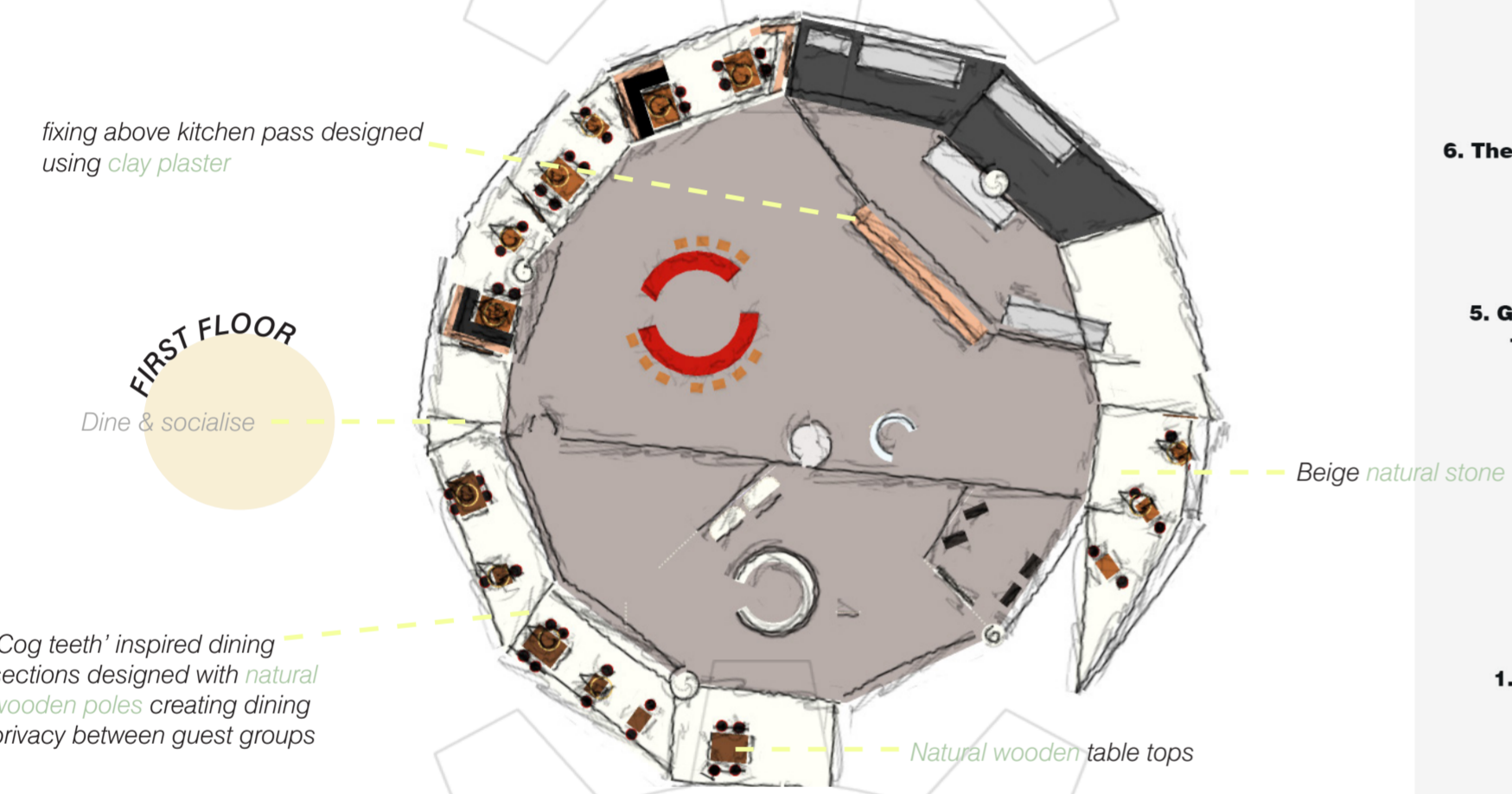
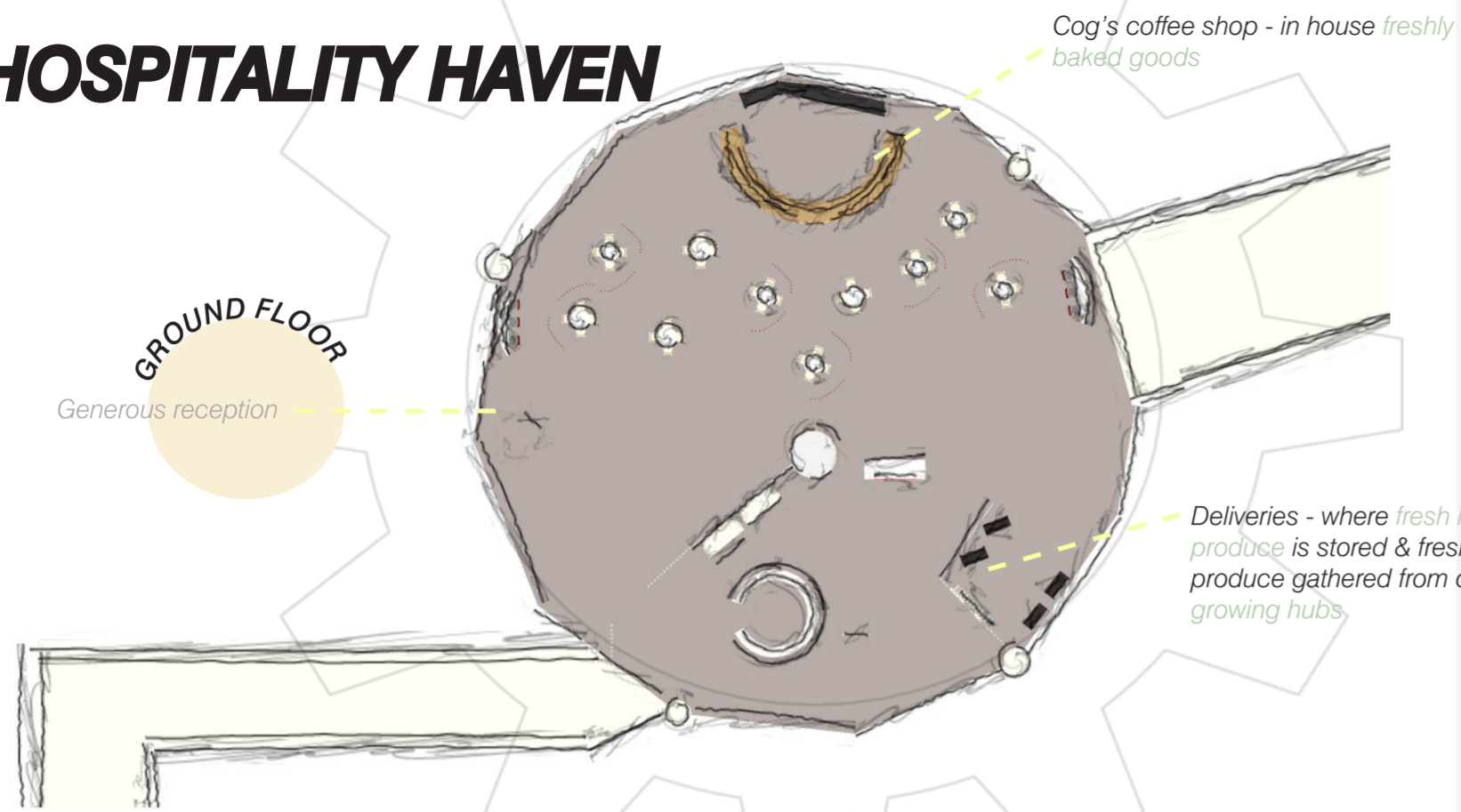
Outdoor balcony area

Fruit & Vegetable patches

Sustainable methods demonstrated within Growing Hubs where urban farming supports the city and the site itself.



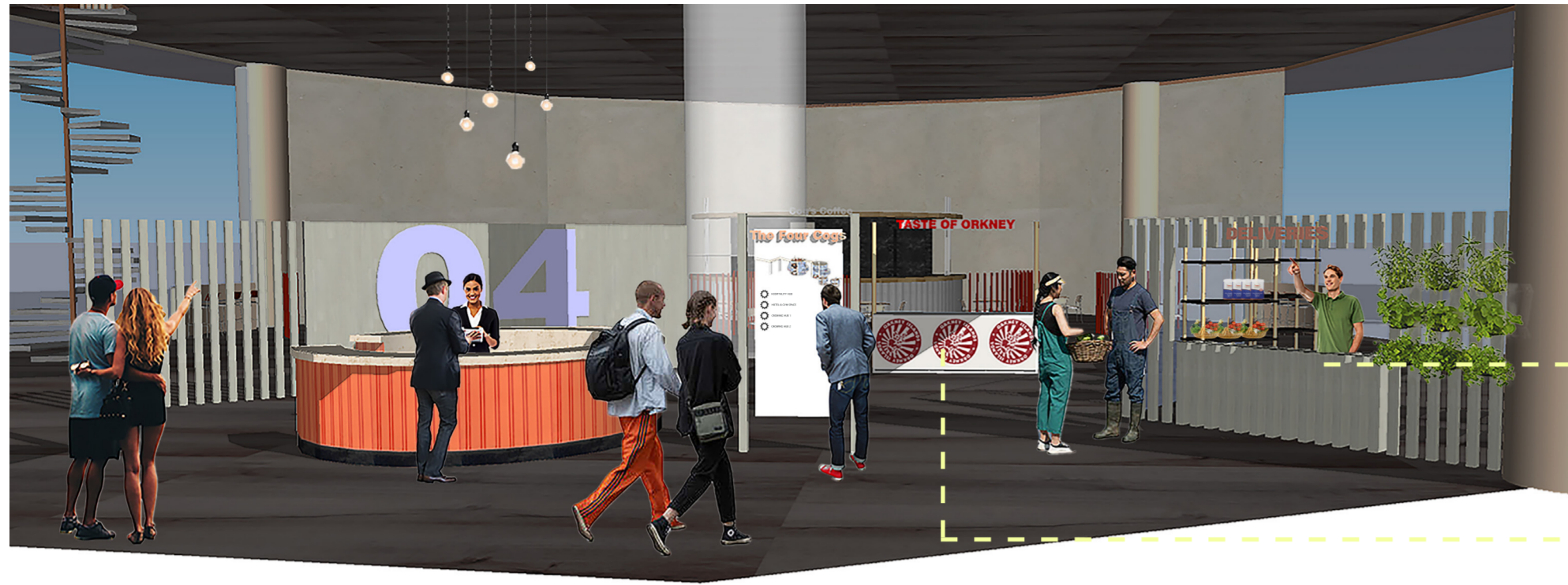
HOSPITALITY HAVEN



Materiality

- Earth tone natural stone
- Beige stone walls
- Wooden flooring - grey tinted
- Grey bolted metal panels
- White marble detail of bar
- Earth tone natural plaster
- Terracotta tiles

Generous reception



Guest journey

Upon arrival, guests are greeted with a generous reception allowing visitors to be easily navigated throughout each cylinder. The reception desk, designed with terracotta tiles ensures guests a warm and friendly welcome. A good host is key to any hospitality experience so it was a crucial feature of the design positioned directly upon entry of the **ground floor** space. 'The Four Cogs' welcome and information board includes a key so guests can easily explore each of the cylinders and understand what they have to offer.

Positioned to the right includes the 'Deliveries' base where *fresh local produce* is stored and taken to the **first floor** where Cog's restaurant is situated. This base also contains *fresh vegetables, fruit and herbs* that are grown on site at the *growing hubs*. The design of this spatial element is heavily influenced by the line rhythm of 'cog teeth.'

Positioned at the back of the ground floor space is 'Cog's Coffee' shop where guests can experience day time delights of a varying selection of *locally baked goods* such as pastries, as well as *in house freshly baked items* and *freshly ground coffee*.

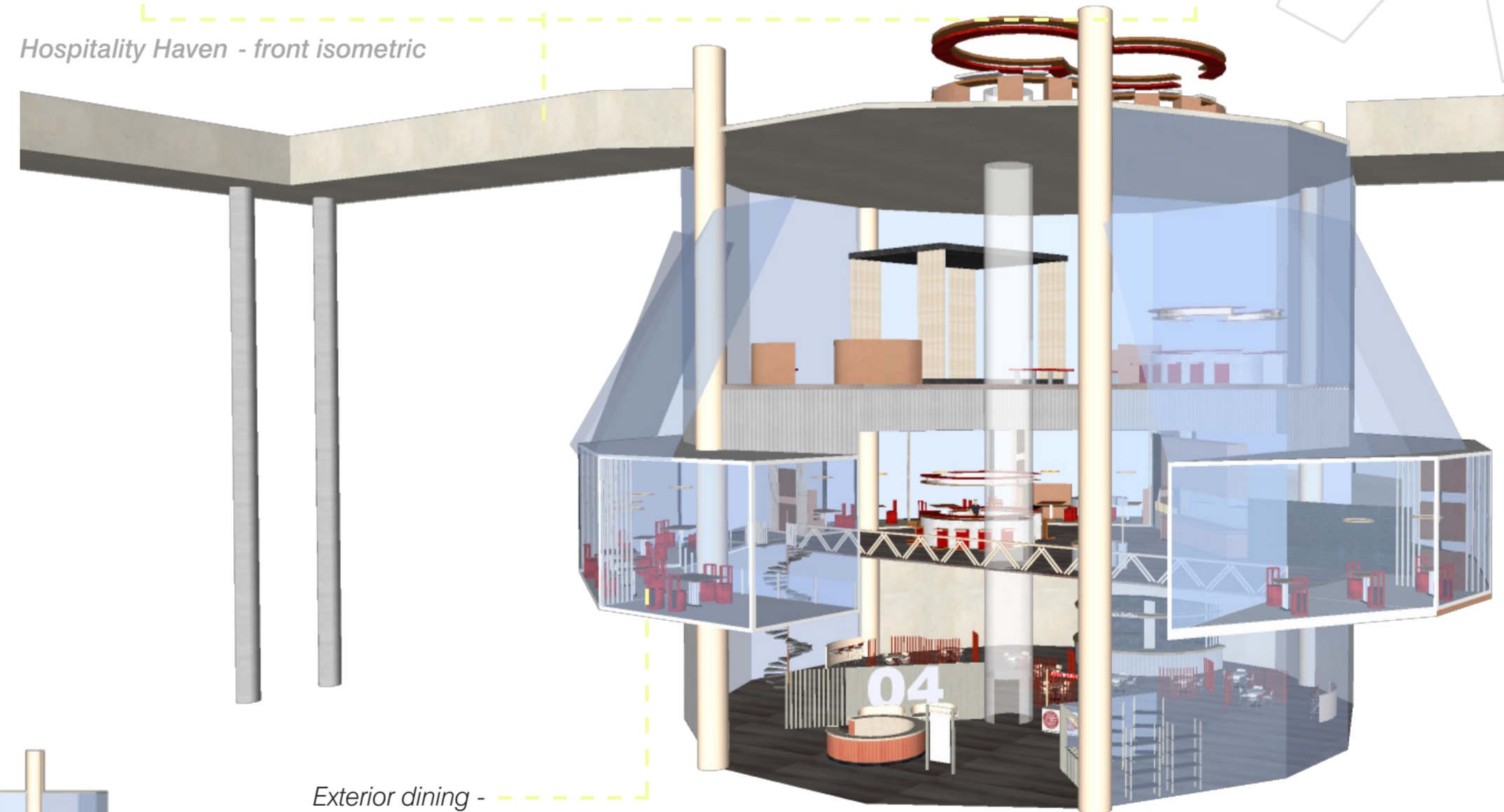
Cog's coffee



At the centre of the **ground floor** space situates the 'Taste of Orkney' stand, a pop-up offering guests an *initial taste of local produce* from elsewhere.

Bridge to Eden

Hospitality Haven - front isometric



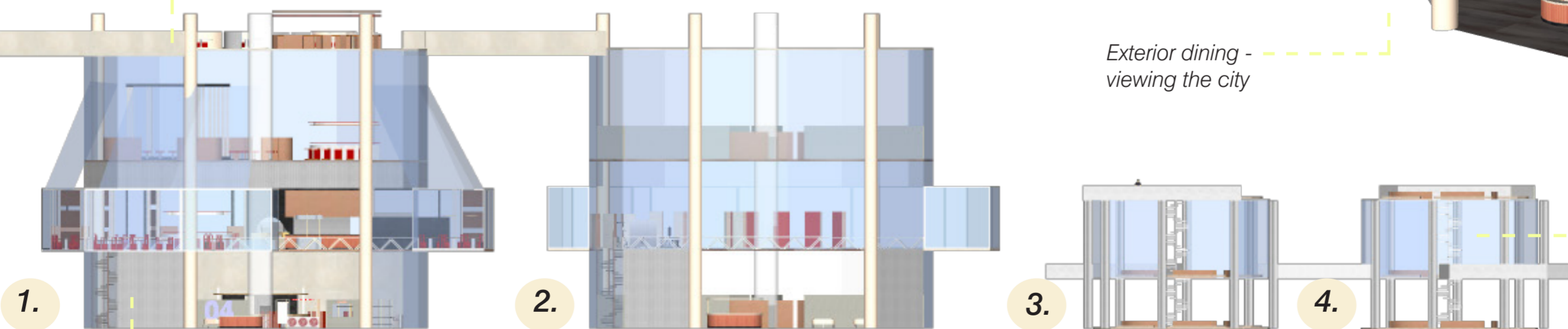
Exterior dining - viewing the city

Bridge walkway connecting cylinders

THE FOUR COGS

Front elevation revealing materials and details

Natural beige standstone



Greenhouse glazing to allow nature and fresh fruit & vegetables to thrive

Existing bolted metal exterior

Hospitality Haven

Eden Residences & Gym

Growing Hubs 1 & 2