

'Quay' to Eden

Project Overview

The 'Quay to Eden' project is an innovative design initiative that aims to rejuvenate Dundee's historic waterfront while incorporating sustainability principles. By connecting the renowned Eden Project to the iconic Camperdown Dock and improving accessibility for cruise ship passengers, the project seeks to create an environmentally friendly gateway for visitors arriving in Dundee. The vision is to transform the waterfront into a vibrant destination that caters to both tourists and locals, ensuring a harmonious balance between aesthetics, functionality, and eco-friendliness.

Through the fusion of cutting-edge design and sustainable development practices, the 'Quay to Eden' project will elevate Dundee's waterfront to new heights of sustainability. Emphasizing innovation, the design solution will embody the values of sustainability, community engagement, and environmental consciousness. By embracing sustainable materials, energy-efficient infrastructure, and environmentally friendly technologies, the project will serve as a model for sustainable urban development.

Moreover, the design will not only establish a physical connection between the Dundee Eden Project and the waterfront but also provide a warm and inviting entrance for cruise ship passengers. It will harmoniously blend visual appeal and functionality, reflecting the natural themes of the Eden Project while paying homage to the rich maritime history of Dundee.

Overall, the objective of this sustainable design project is to create an inviting and sustainable link between the new Dundee Eden Project and the waterfront, promoting eco-tourism and attracting visitors from both the local community and around the world.

What?

The Quay to Eden project is a design initiative that seeks to revitalize Dundee's historic waterfront by linking the iconic Camperdown Dock to the world-renowned Eden Project and enhancing accessibility for cruise ship passengers. The project aims to create a stunning gateway for visitors arriving in Dundee and transform the waterfront into a dynamic destination for both tourists and locals. The Quay to Eden project will elevate Dundee's waterfront to new levels of aesthetic appeal.

Why?

The purpose of the 'Quay' to Eden project is to act as the final touch in Dundee's waterfront redevelopment, while simultaneously promoting sustainability. By creating a captivating gateway for visitors arriving in the city by cruise, the project aims to elevate the aesthetic appeal of Dundee's waterfront while showcasing its rich history and natural beauty. The 'Quay' to Eden project not only offers a memorable educational experience for tourists and locals but also positions Dundee's waterfront as a must-visit destination for environmentally conscious travelers. By attracting visitors from around the world, this initiative contributes to the consciousness of climate change.

Where?

Located at Camperdown Dock in the City Quay area of Dundee. An area important to Dundee's waterfront yet lacking in footfall. It is situated directly opposite the soon to be Dundee Eden project making it a prime location to create a hub of educational sustainable tourism.

Dundee Eden Project

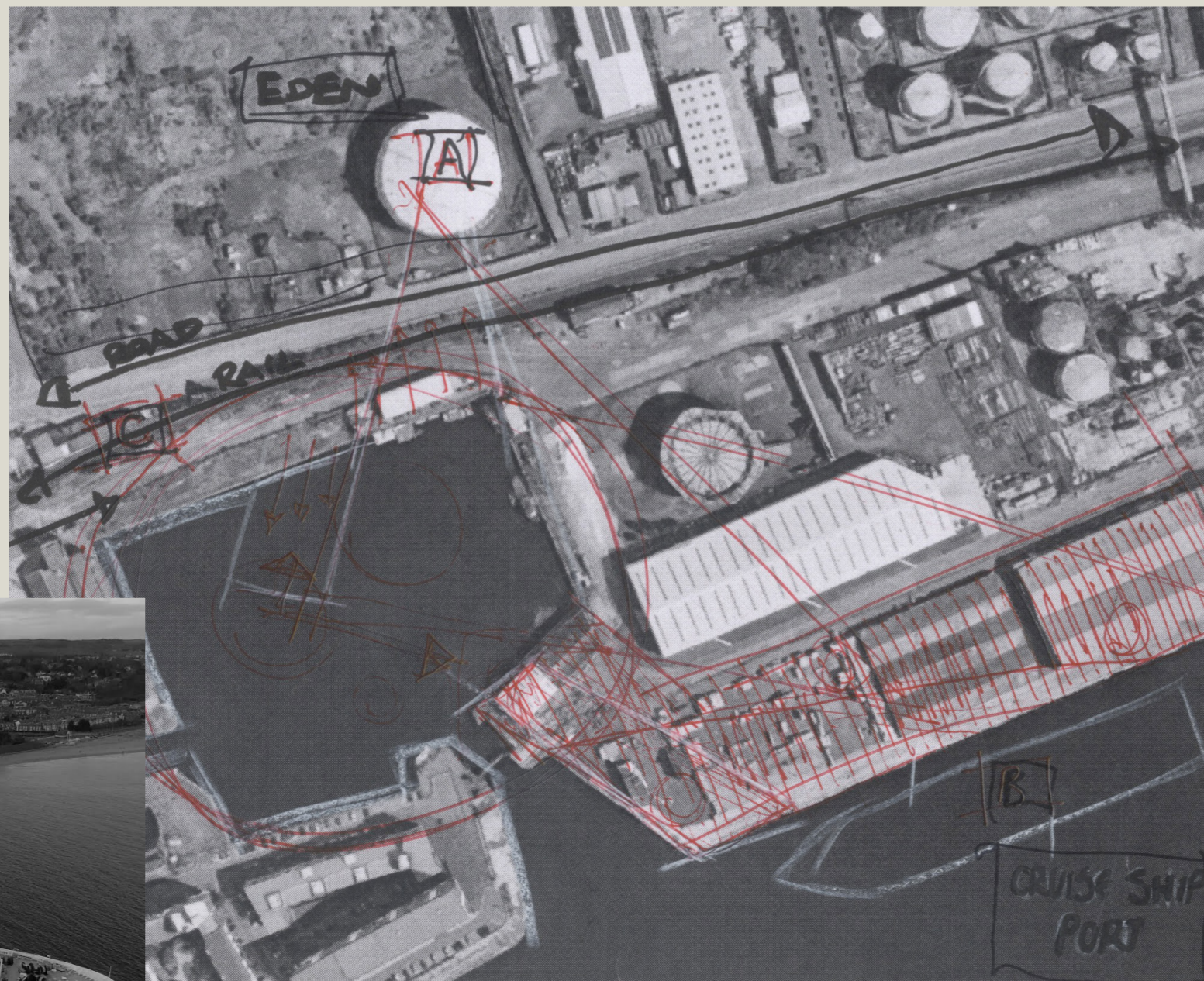


Interview with Eden
Caoimhe Sweeney

To further enhance Dundee's cultural heritage and in expansion with the Dundee Waterfront regeneration project, Eden is coming to Scotland. The charity announced Eden Project Dundee with its plans for Scotland's first ecological attraction in 2021. Eden is set to take the former industrial site that was once Dundee's gasworks. Located on East Dock Street, set back just northeast of the waterfront. Drawing inspiration from Dundee's rich history, the project plans to incorporate the history of Dundee by playing on the 'Nine Trades of Dundee'. Creating their own nine new guilds. Said to be; Healers, Growers, Myth-Makers, Navigators, Celebrators, Menders, Re-Sourcerors, Noticers And Alchemists. The charity stated, "it is characterised not by specialisms, like the existing nine trades, but by providing alternative ways of perceiving the world". The main idea being the Dundee's Eden will help bring a new perspective to sustainability and will hopefully be a start to spark change in the way we work and how we help beat climate change.

Cruise Ship Run

There is a growing need for the redevelopment of the cruise port in Dundee to keep up with the increasing demand for cruise ship tourism in the city. The existing port facilities are outdated and limited, which can create logistical challenges for cruise lines and their passengers. Upgrading the port's infrastructure, such as berthing facilities and passenger handling areas, would not only make the port more attractive to cruise lines but also improve the overall experience for passengers visiting Dundee. A more modern port would also enable the city to handle larger ships, which would bring more visitors and revenue to the local economy. In addition, a revamped port would help to position Dundee as a top destination for cruise ship tourism in Scotland, helping to drive growth in this important sector. Overall, redeveloping the cruise port in Dundee is essential to ensure that the city can capitalize on the opportunities presented by the booming cruise ship tourism industry.



Site Analysis

A Short History

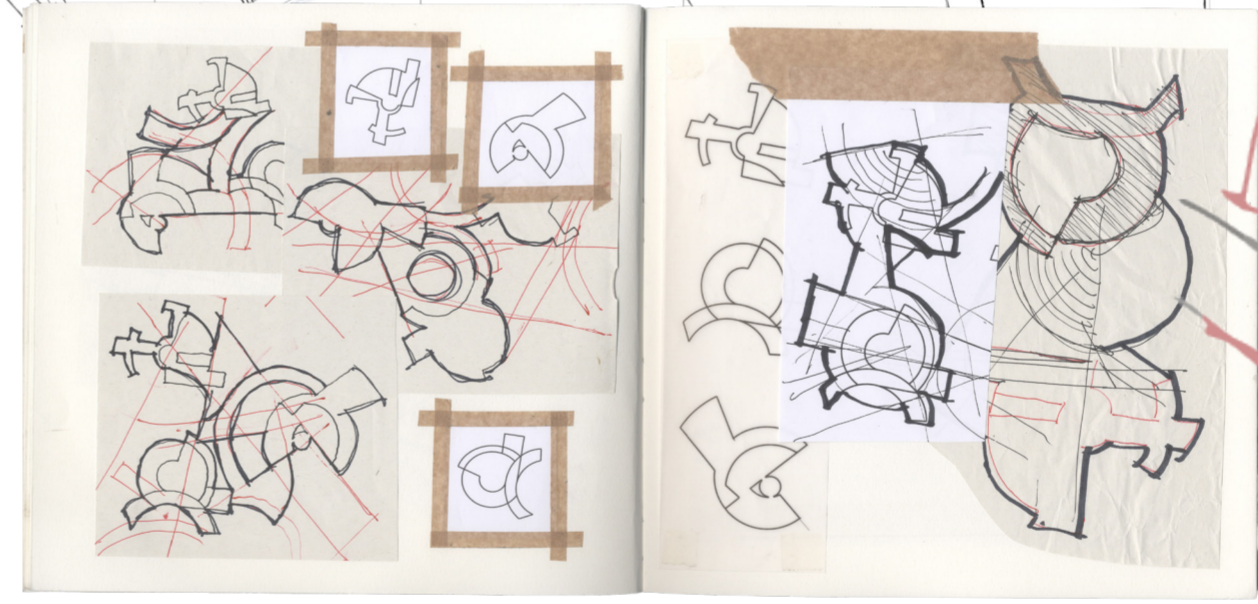
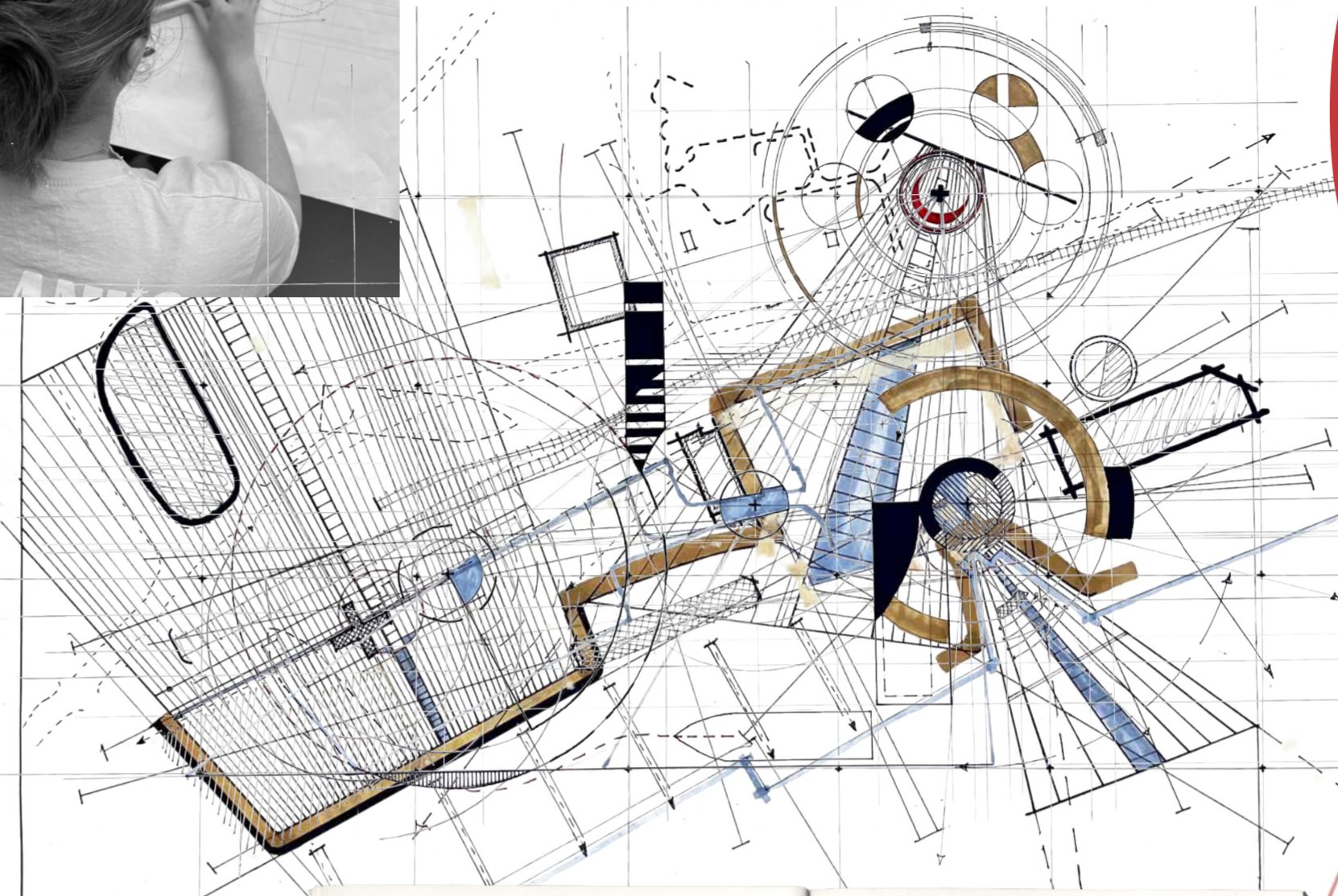
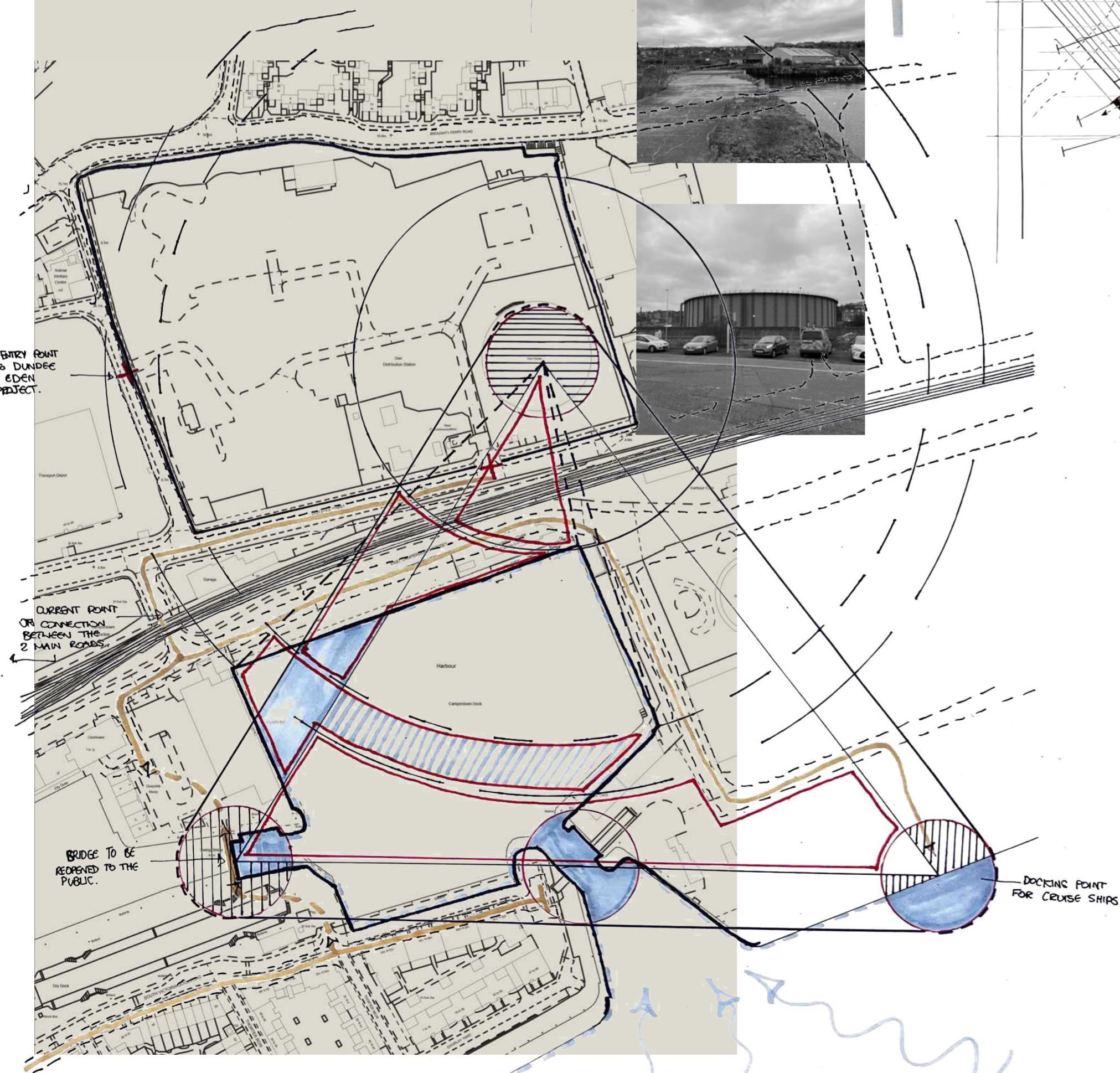
Dundee's Camperdown Docks have a rich history. Originally built in the 19th century for the whaling industry, they later expanded to handle various goods like jute, coal, and textiles. During WWII, the docks played a vital role in naval operations and landing craft assembly. However, the docks declined in the latter half of the 20th century, leading to abandonment. The dock was designed by Thomas Grainger, completed in 1877, and covers 46 acres with a 1.6 km quay length. Over 3 million cubic yards of earth and rock were excavated, using manual labor and steam-powered machinery, with the excess material used for creating new dockside land.



My Response

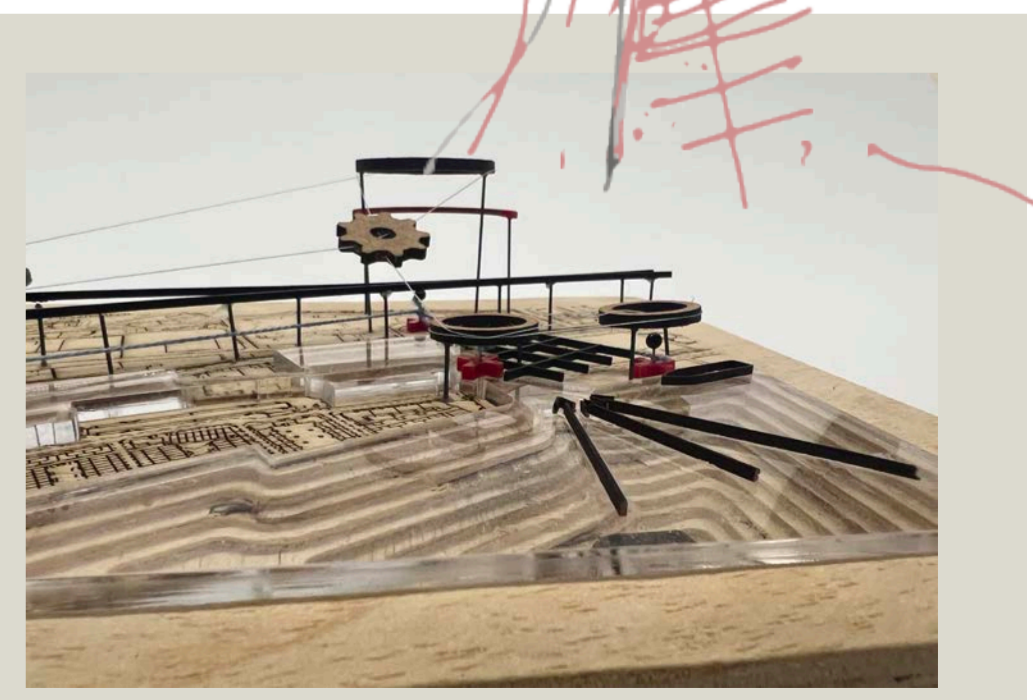
02

The sitemap was an essential tool for navigating and exploring the site at face value. By using a site map, various geometries and patterns were easily identified and gave an understanding of the site connections. I translated this knowledge through creative drawings. Using a lightbox to help the map guide the drawing, I created a series of these drawings in order to find every hidden geometry within the site. Through layering the site drawings that I made, I was able to analyse and take shapes from them in a 2D spatial context.

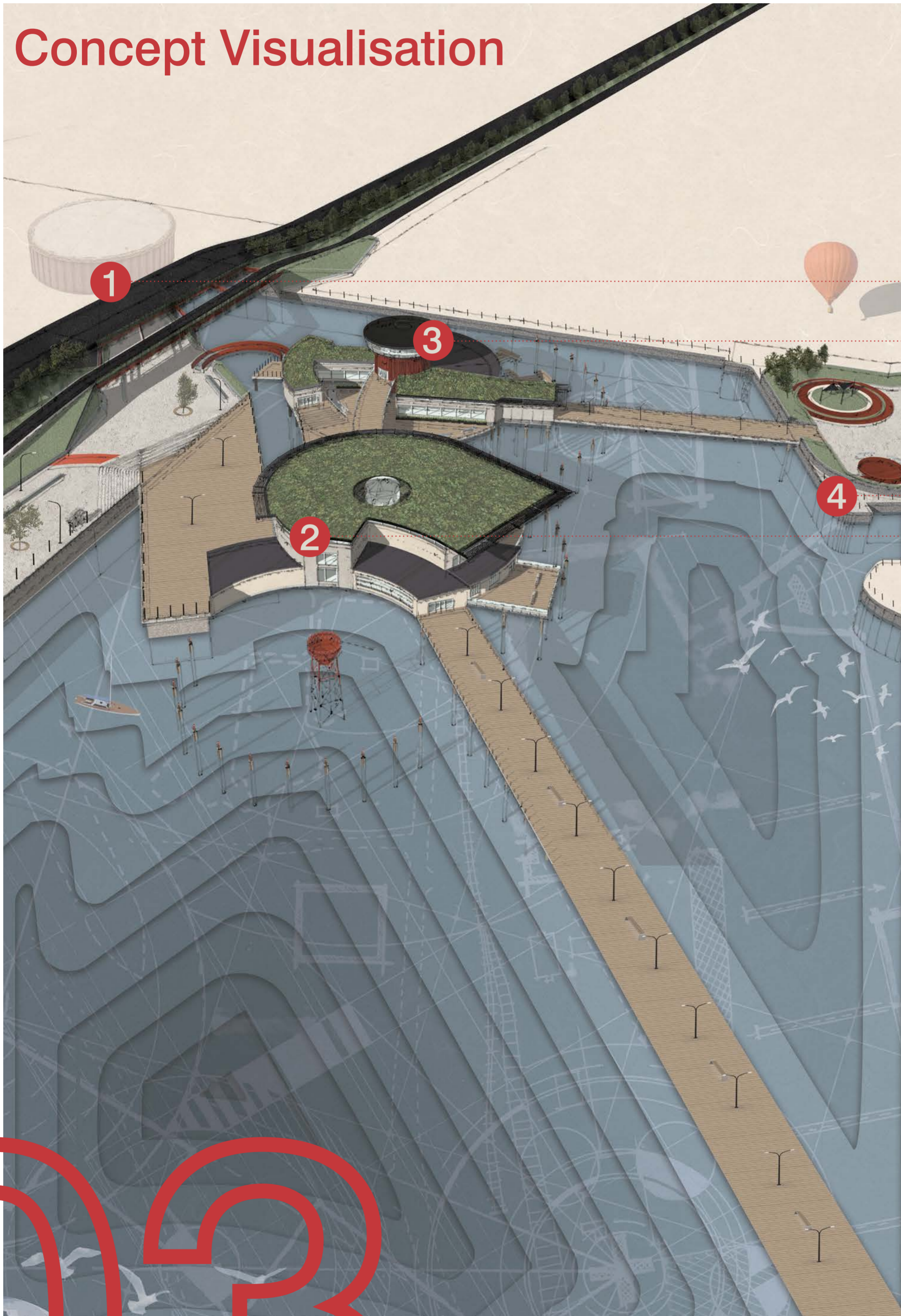


Sketch Models

Sketch model of combined map drawings. Highlighting important areas of the City Quay. Initial indication of potential road/rail lift through to the site of Dundee Eden. Using techniques such as laser cutting and CNC'ing to create these 3D visual map.



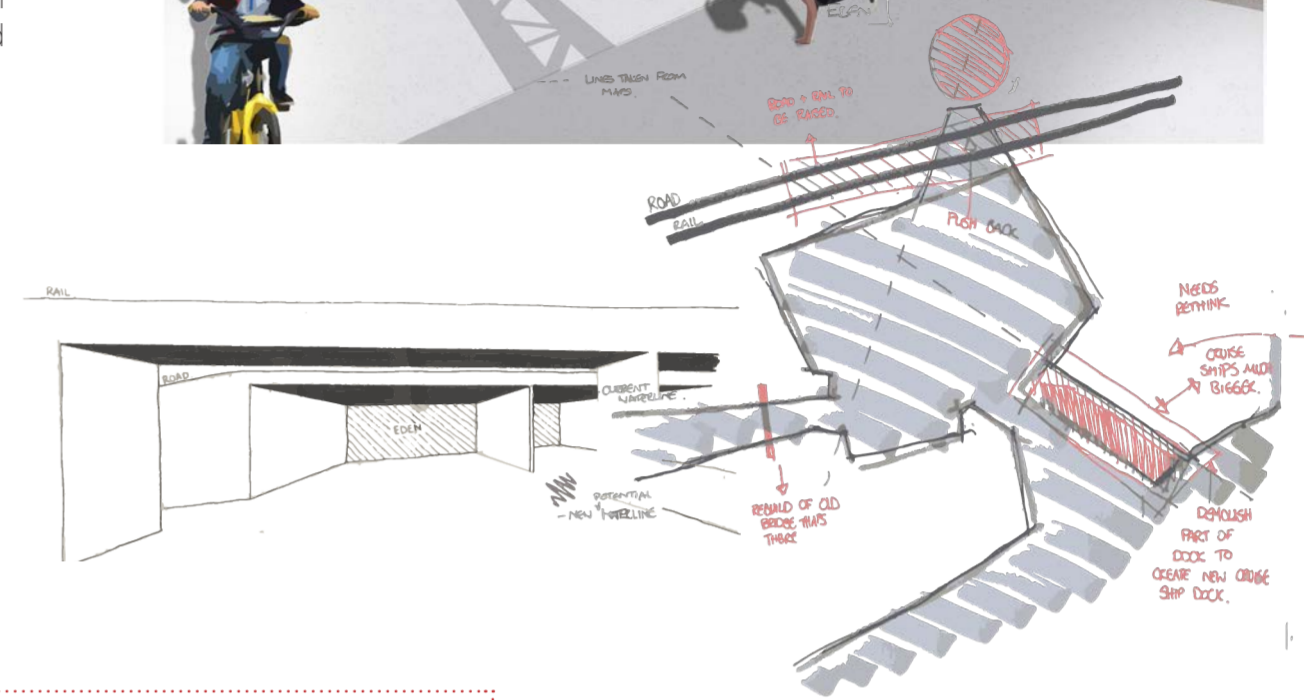
Concept Visualisation



1. The Underpass

Connections

This concept defies norms, seamlessly blending transportation and nature. The road arches gracefully, suspended mid-air, enabling the Eden Project's vibrant ecosystem to thrive below. Visitors experience a breathtaking fusion of transportation and natural wonder, immersed in the captivating surroundings. This elevated road serves as both a functional pathway and a captivating art installation, embodying the Eden Project's spirit—pushing boundaries and reimagining our relationship with nature. Moreover, the design also incorporates the pushing back of the water, a nod to the docks historic path but also as a water connection to the Eden Project.



2. 'Growers' Hub

Education

The 'Growers' hub, primarily acts as an educational space for Dundee Eden project to use. A space for visitors to act and learn on what they were taught as they wandered through the Dundee Eden project itself. Whilst also housing space for a restaurant/ cafe for the visitors. A hub of educational sustainable activity.



..... Restaurant/Cafe

..... Kitchen Facilities

..... Toilet Facilities

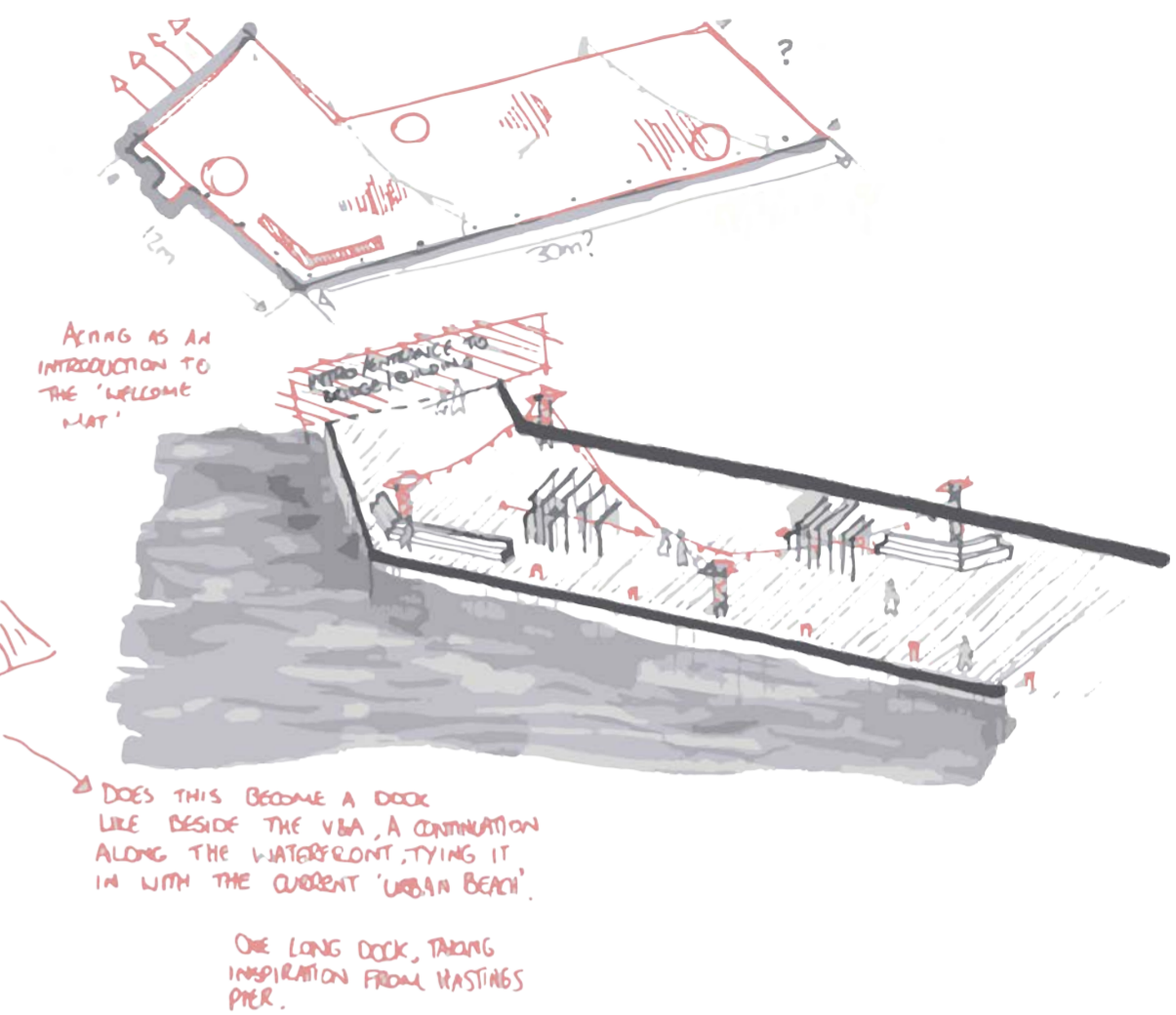
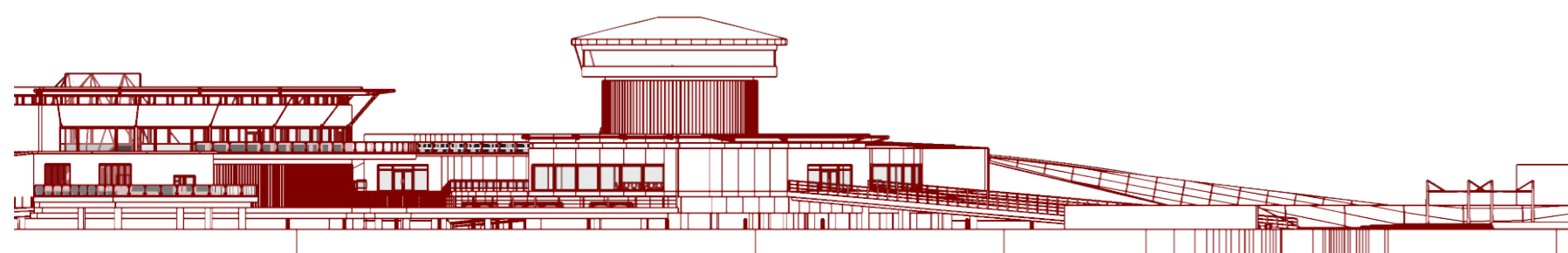
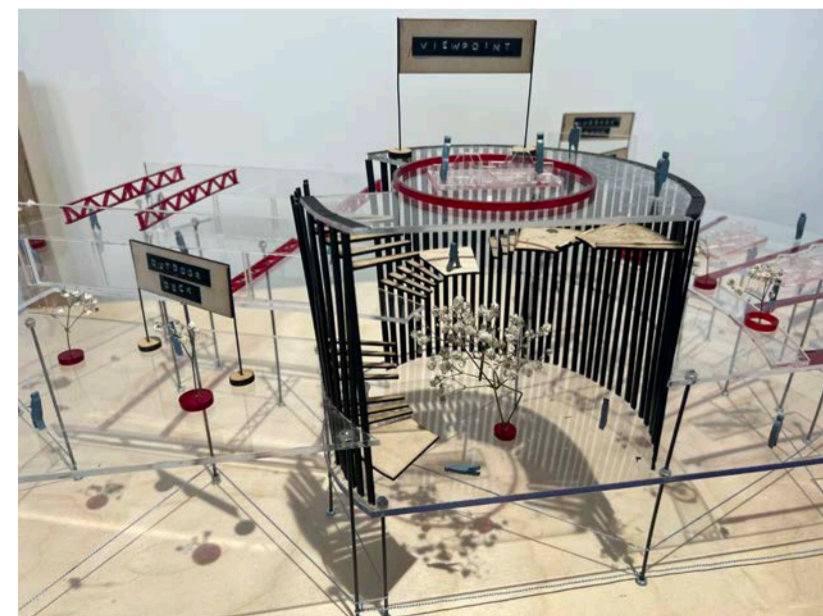
..... Educational Hubs

- Rooftop Garden
- Indoor Greenhouse
- Outdoor Decks
- Multiuse Rooms

4. 'Navigators' Hub Tourism

- Cruise Check-in
- Cruise Lounge
- Lookout Point
- Water Sport Centre

The 'Navigators' hub is a continuation of improving the current cruise ship port in Dundee, harbouring space for check ins, luggage holds and a waiting lounge. Whilst primarily being designed for Dundee's cruise tourism, it is also a place for these tourists to enjoy with the viewpoint that looks over the town of Dundee and also a water sports hub for those that want to experience Dundee's activities.



3. Cruise Ship Run Welcome Mat

In order to create a more welcoming area for cruise tourism, a redesign of Dundee's dock would be essential. To create a more aesthetically pleasing environment, the dock area will be transformed into a vibrant waterfront promenade. Lined with landscaped gardens, public art installations, and recreational spaces, the promenade would offer visitors a pleasant and relaxing atmosphere. Implementing sustainable design practices, including green spaces, energy-efficient lighting, and waste management systems, would further enhance the appeal of the area. Catering to the growing demand for cruise tourism, providing visitors with an unforgettable and enjoyable experience.

