

THE RISEUP STATION

Social Prehabilitation Centre that focuses on preventing homelessness among at-risk teenagers aged 14-17 years old.

Homelessness remains one of the biggest social issues of the modern world. Despite the constant development of technology and social awareness of it, the progress is almost unnoticeable.

My research has shown that experiencing childhood trauma, such as growing up in care or in families with substance abuse, experiencing abuse and neglect, heightens the risk of becoming homeless in the future. Young people often develop unhealthy coping mechanisms that help them to deal with their experiences, which often results in difficulties of the transition into adulthood. They are often surrounded by negative role models and environments, where they tend to look for escape from their problems. All that together with the lack of systemised support system, makes them vulnerable and deprives them from equal chances of start in their independent lives.

Between 20 and 25% of children in the Child Protection Register in Scotland live in Glasgow and 687 children were growing up in care in 2023.

The Project's main principle is to provide less fortunate children with the necessary help and support in the transition into adulthood.



The Site is located at 85 Buchanan Street

The building is located at Buchanan Street in Glasgow, which is one of the busiest streets in the city. I chose this location due to its accessibility with many transport links and to encourage young people to escape their environments when they can be easily negatively influenced by others and stigmatised by peers if participating in the local support services.

The building was designed as an office for British Overseas Airlines corporation and was built in 1970. It stands out on the street with its copper-covered facade and hexagonal windows, it still fits the look of the street and in the neighbouring buildings.



Concept Collage



Location of the Building



View of the Building



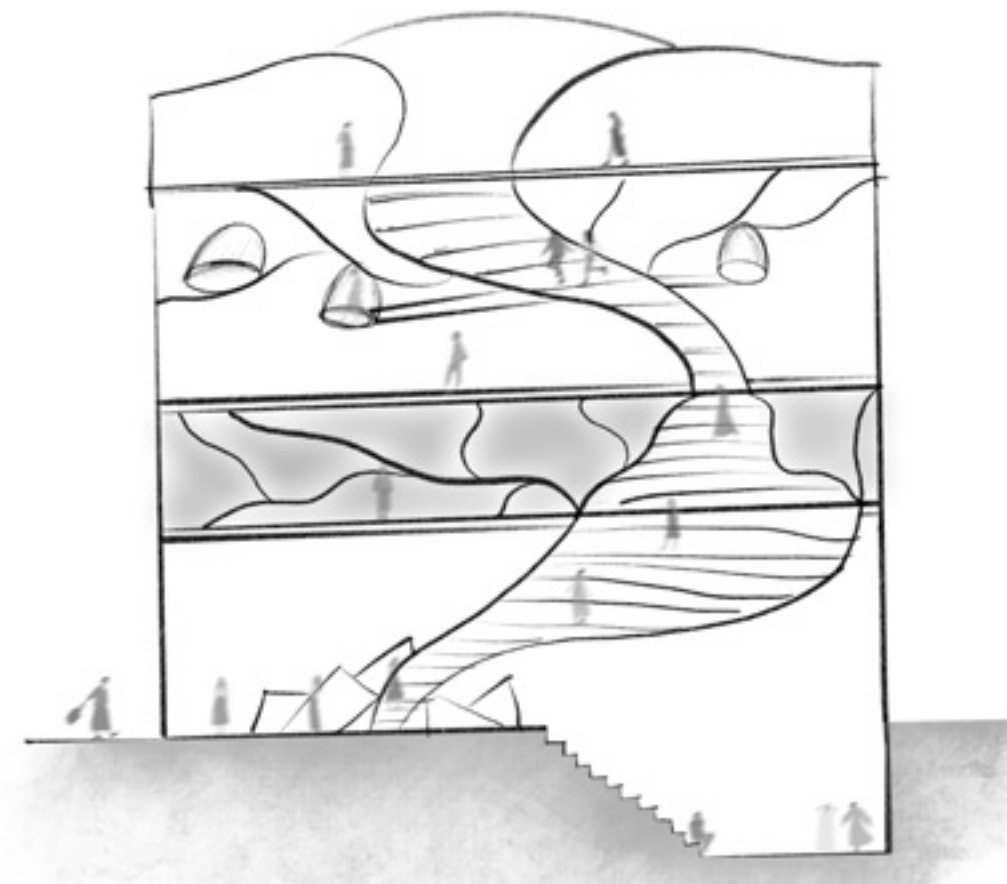
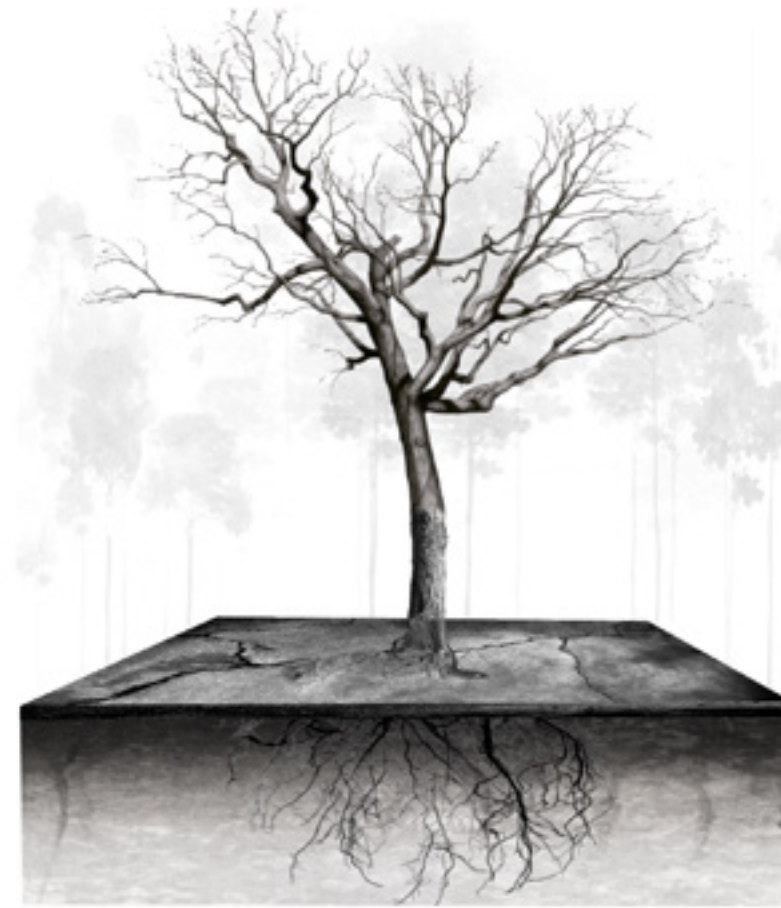
View of the Buchanan Street



THE CONCEPT

Growth and Development Despite Adversities.

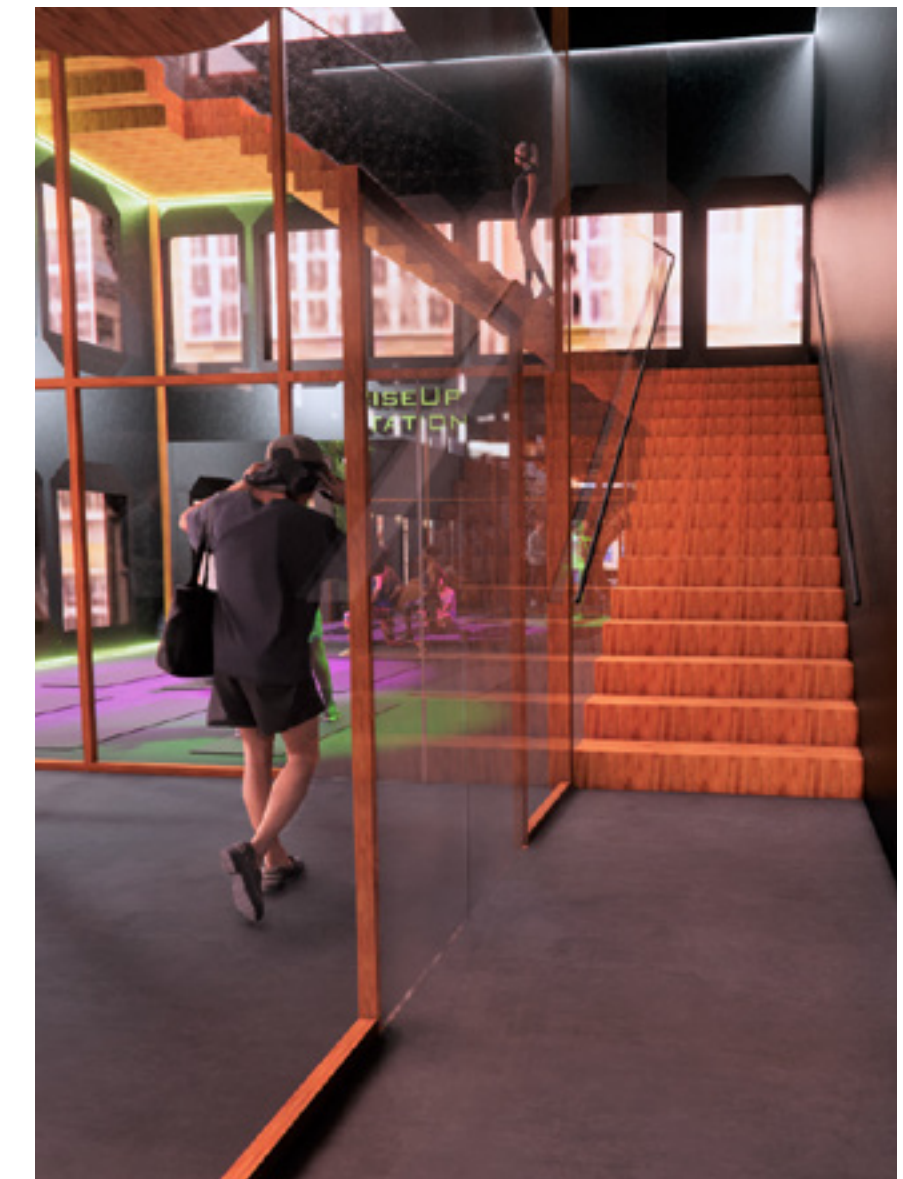
The idea that inspired the design of the space was a tree, that surrounded by concrete, grows despite it. The concrete symbolises trauma and it shows that experiencing it, does not need to stop the growth and development of a person. The tree symbolises the young person that has experienced trauma and shows their strength and resilience.



Concept Development



View of the Outside of the Building



View into the Active Space



View into the Creative Space





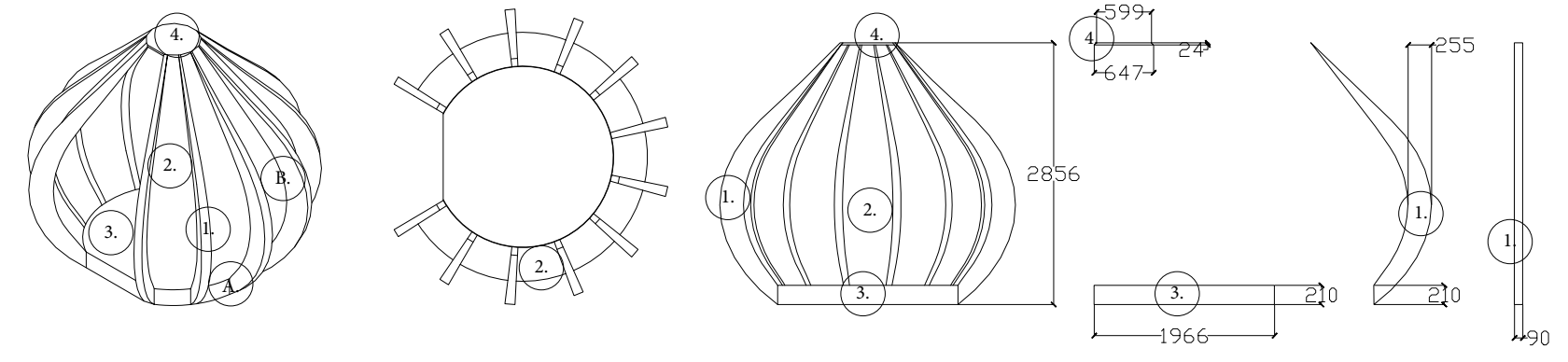
View of the Rooftop Garden



View of the Meditation Pods



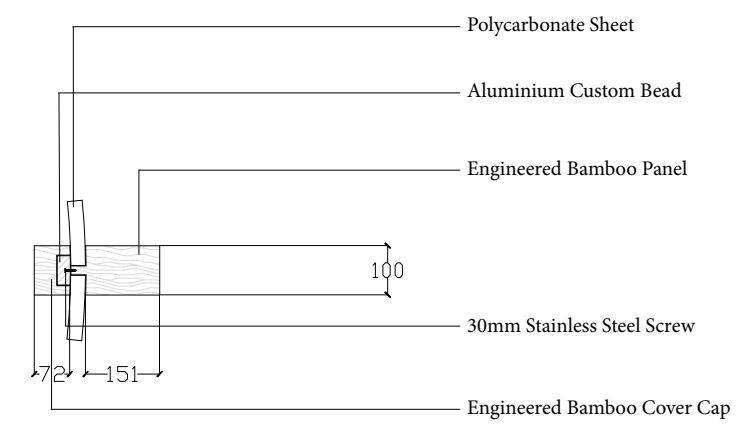
View of the Outside of the Therapy Rooms



Drawings in 1:50

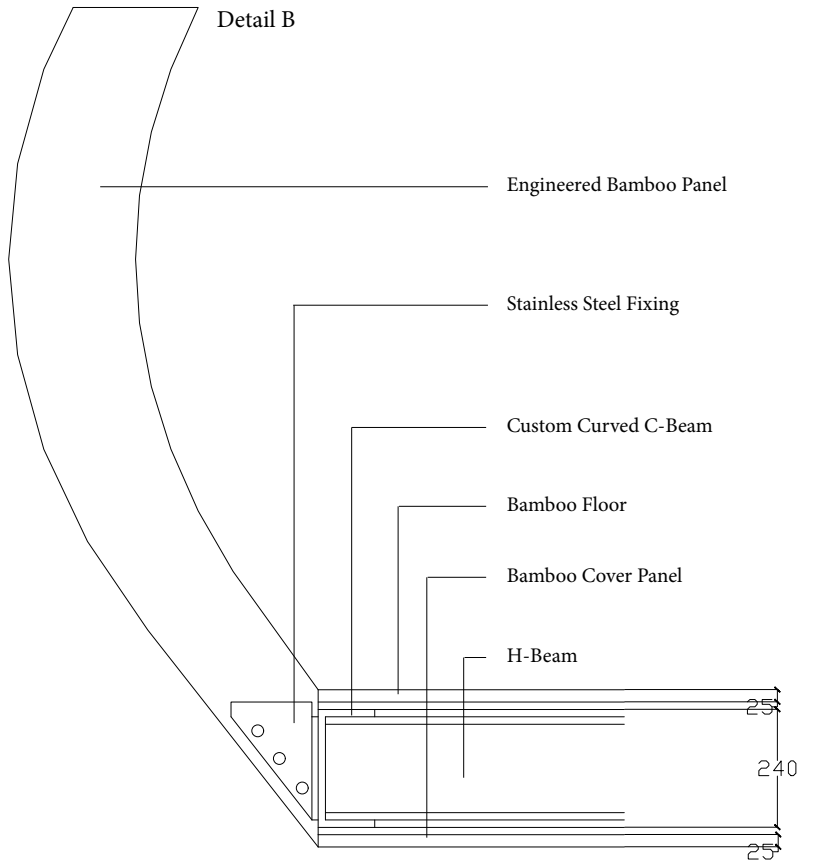
1. Engineered Bamboo Fin
2. Frosted, White, Polycarbonate Sheet
3. Bamboo Wood Covered Floor
4. Bamboo Cover

Detail A

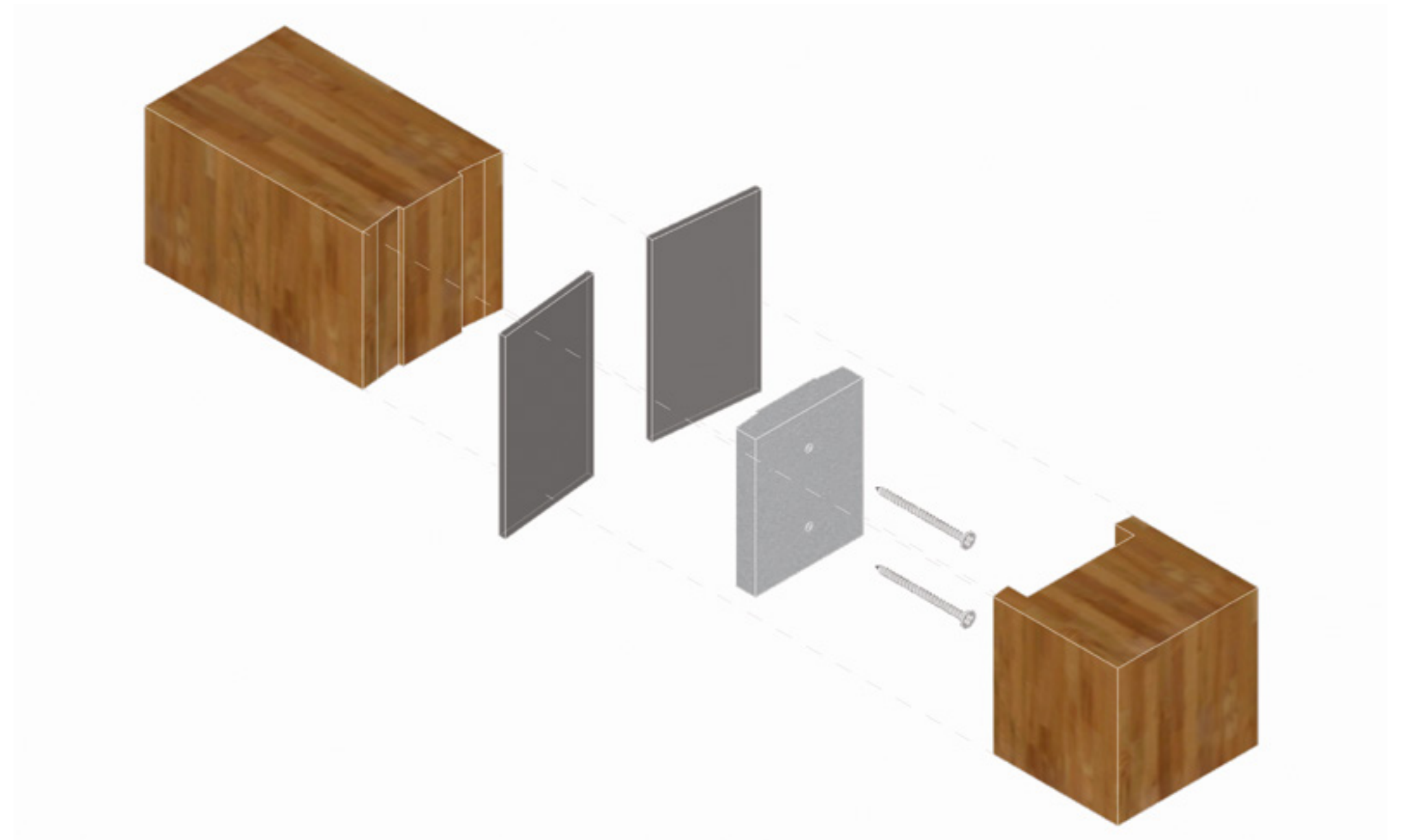


The Fixing of the Fin to the Polycarbonate Sheet in 1:10

Detail B



The Fixing of the Fin to the Floor in 1:10

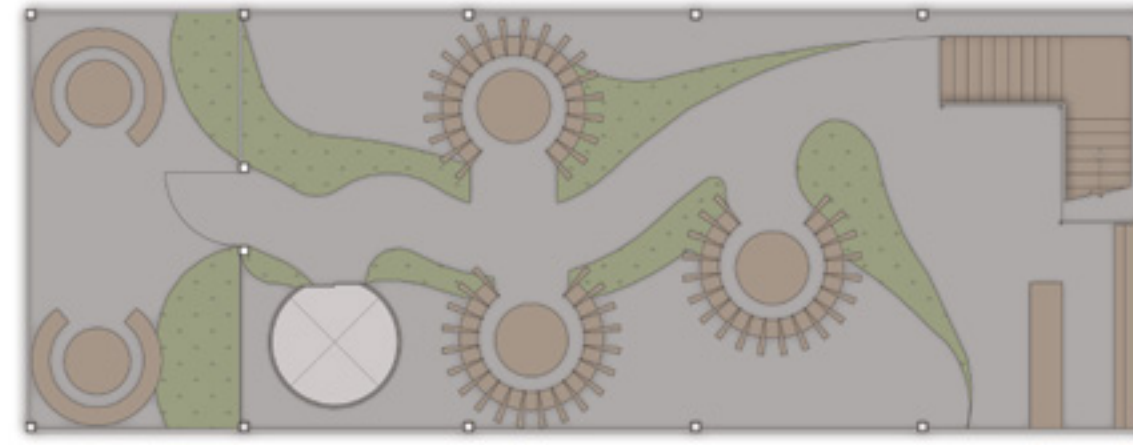


Detail Drawing of the Pod

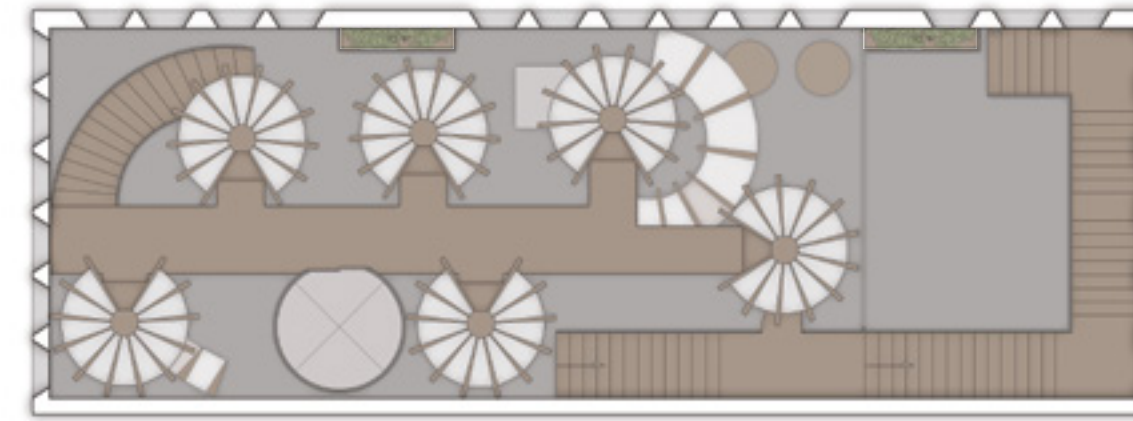


Art Space Rooftop Cafe Gallery Sport/Rehearsal Space Stage Therapy Rooms Meditation Pods

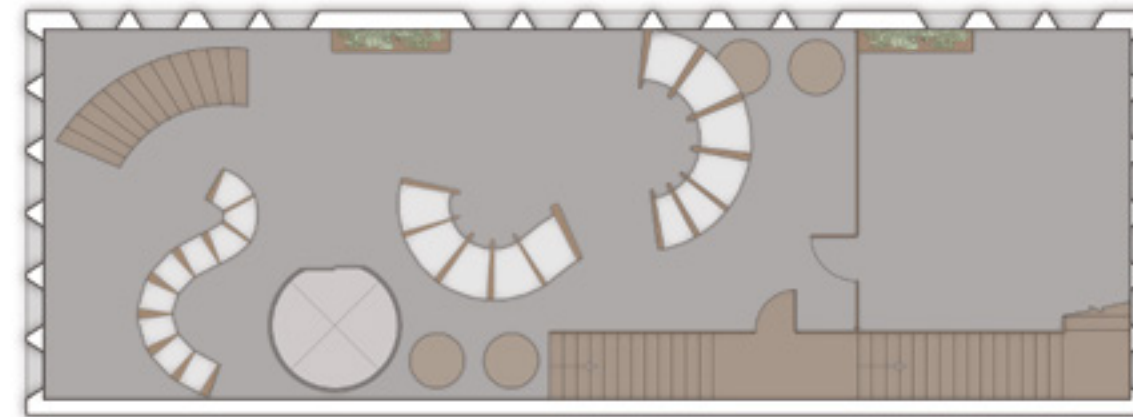
Section of the Building



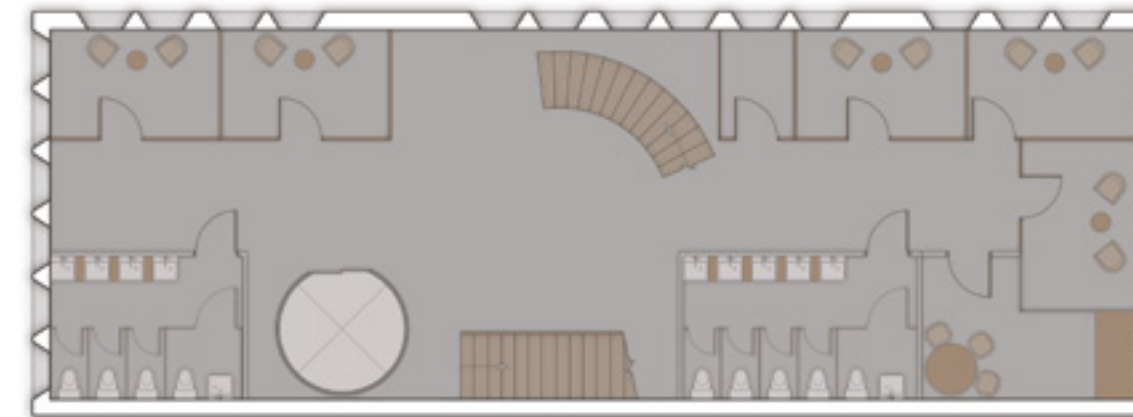
Floor Plan of the Rooftop Cafe



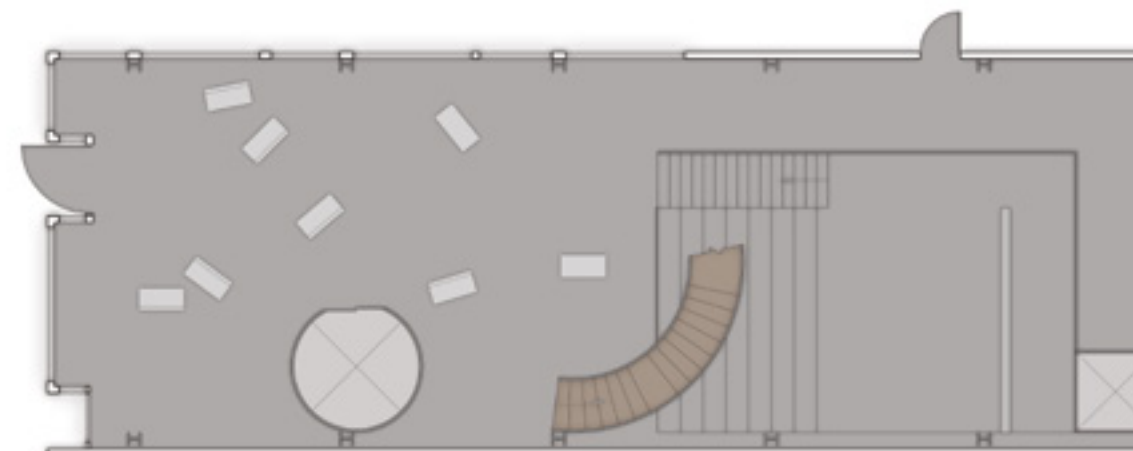
Floor Plan of the Mezzanine Floor



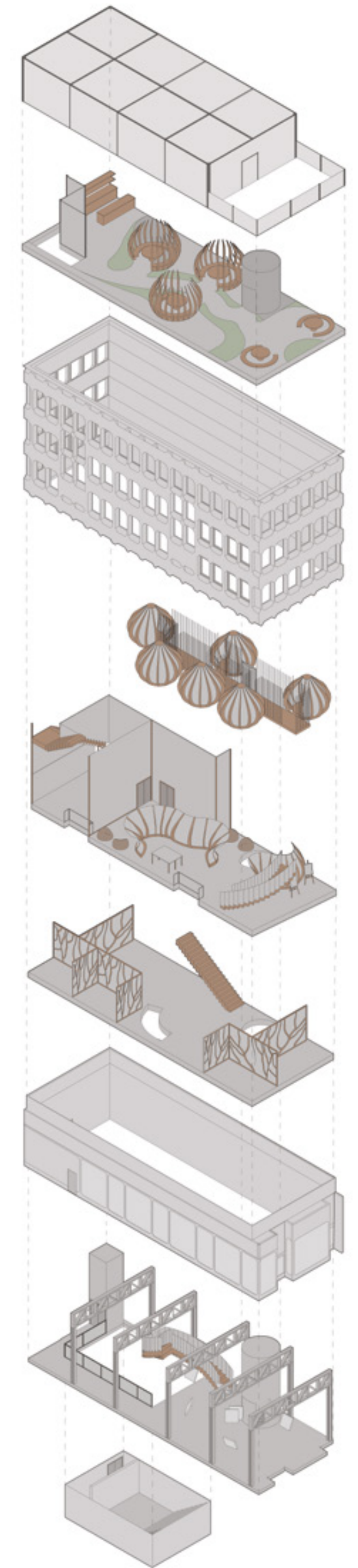
Floor Plan of the Second Floor



Floor Plan of the First Floor



Floor Plan of the Ground Floor



Isometric Drawing of the Building