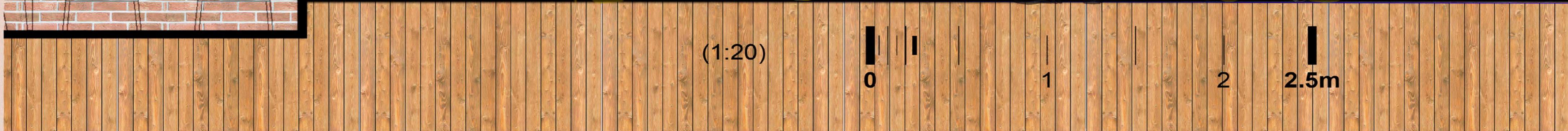
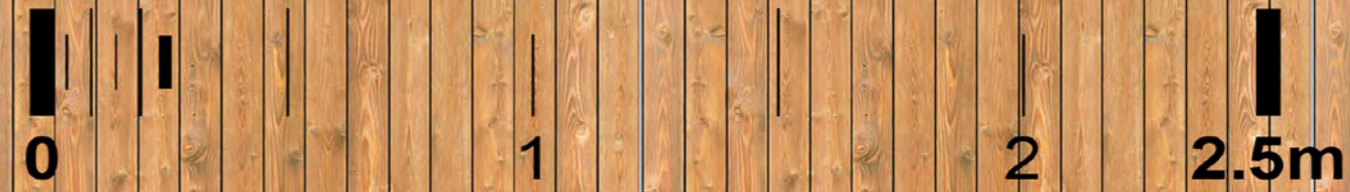


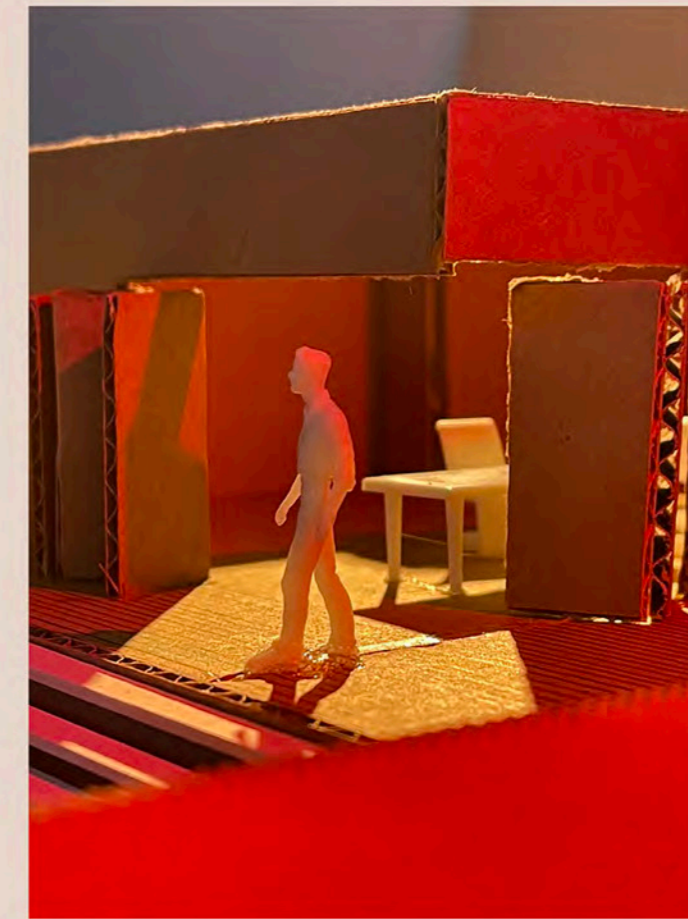
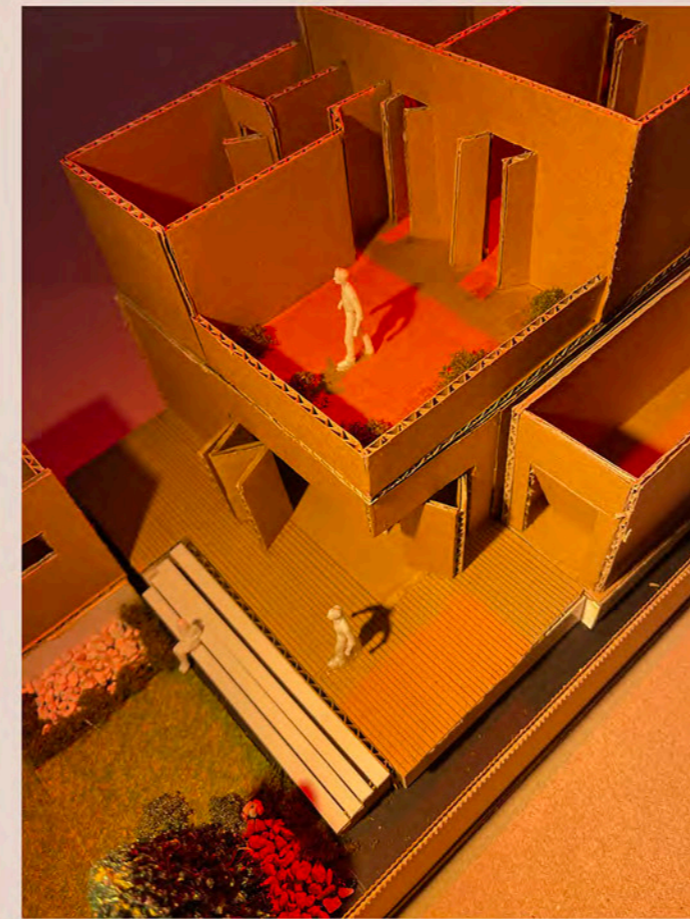
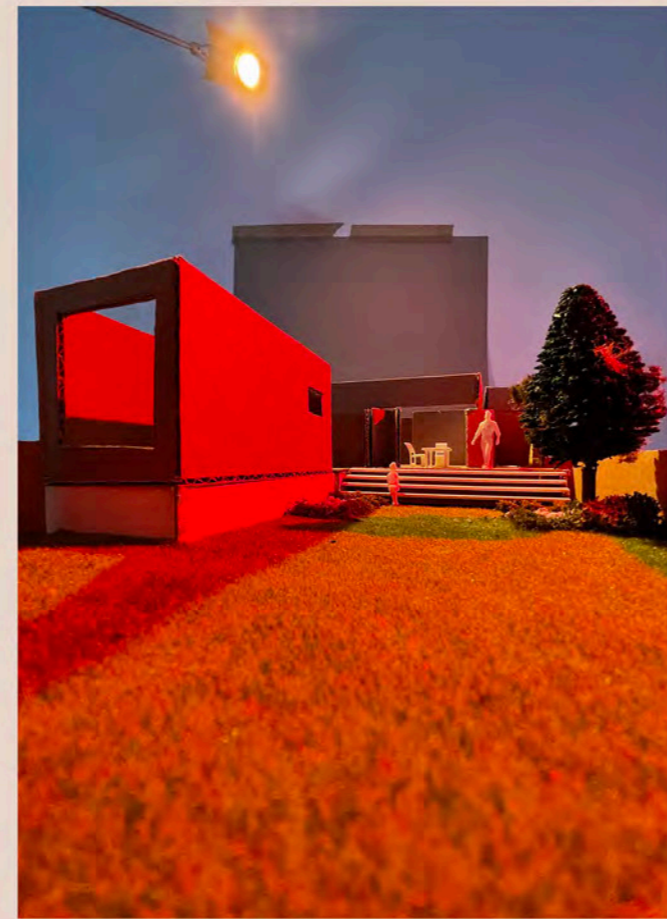
(1:100)



(1:20)



# MODEL MAKING



## FLOOR PLANS

detailed/furnished floor plans in scale 1:100

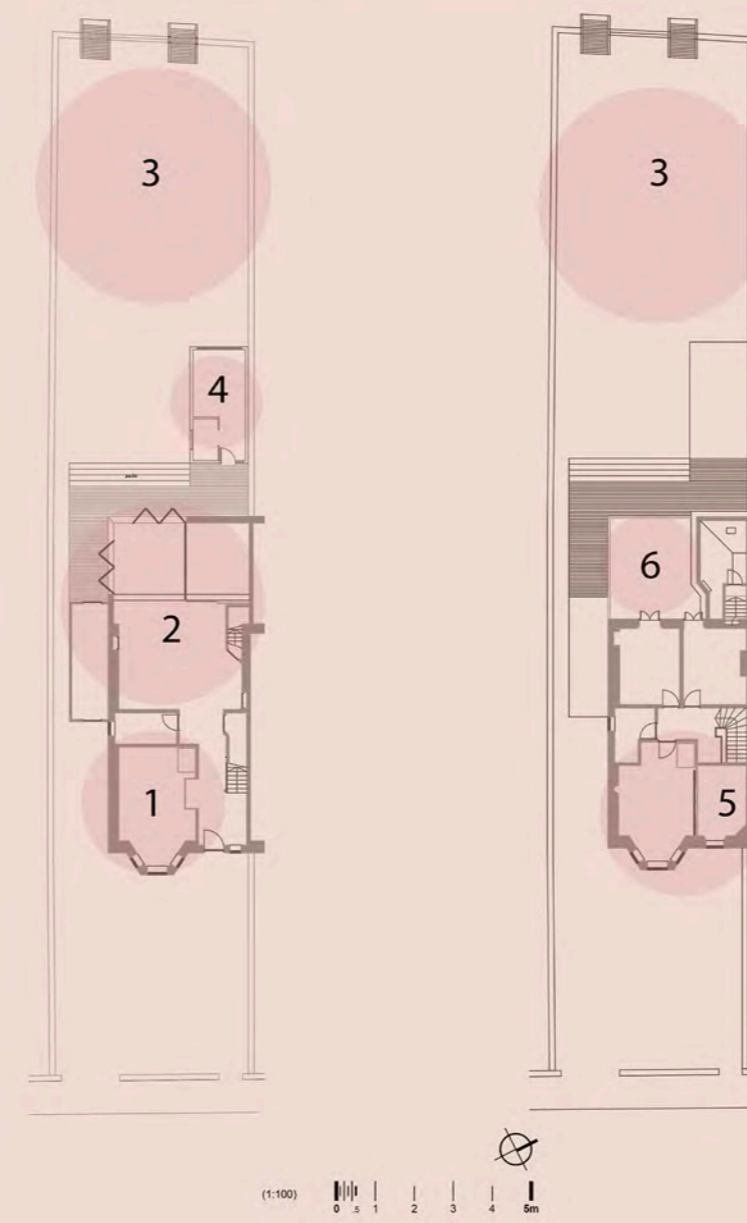
the pop-up sleeping space for guests is hidden within the open-living-space,

using a modular furniture unit to hide the murphy bed, as done in finley's pod.

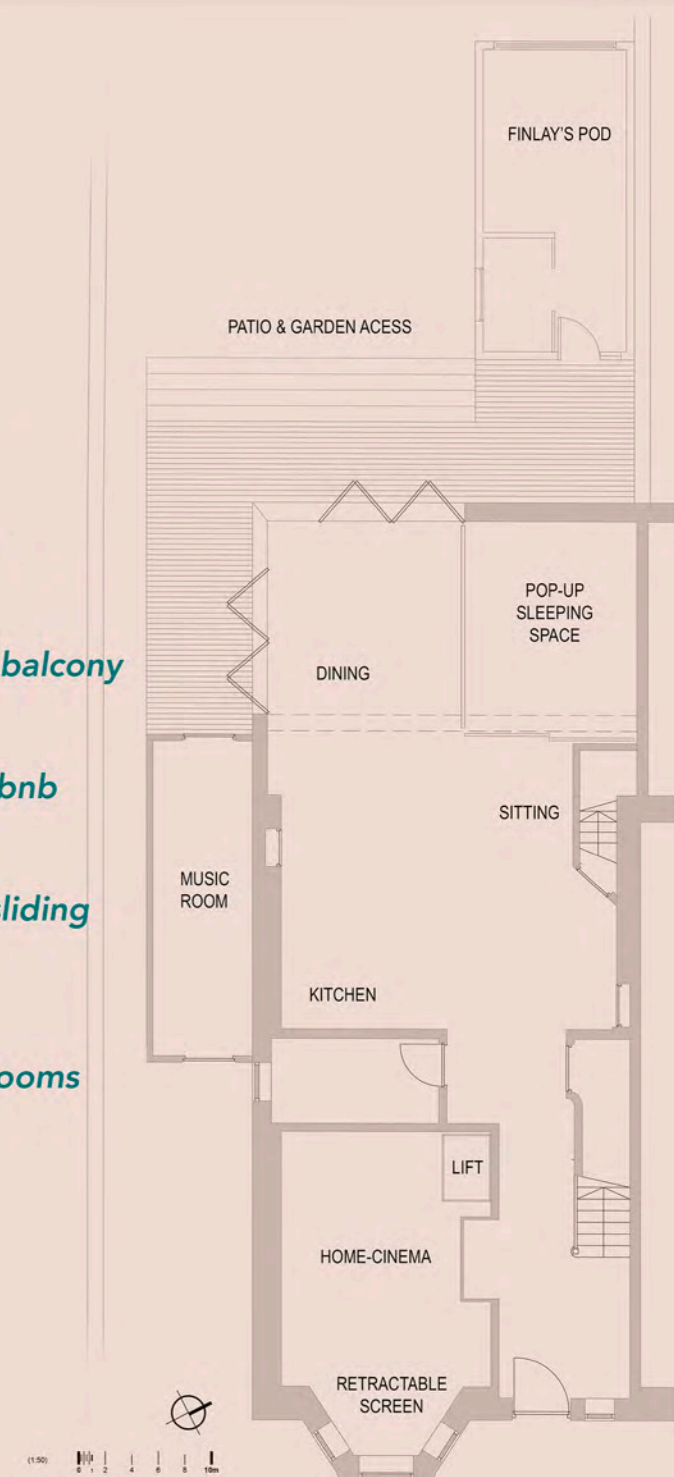
a perforated metal sheet has been installed on the side wall, while curtains can be closed at night as seen in the section above.



## BUBBLE DIAGRAM

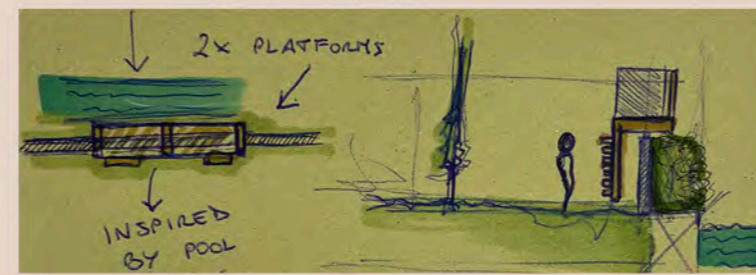


1. cinema room
2. open plan living
3. garden/sliding canal view balcony
4. finley-s pod/future airbnb
5. parents en-suite/ glass sliding doors
6. terrace adjacent kids' rooms

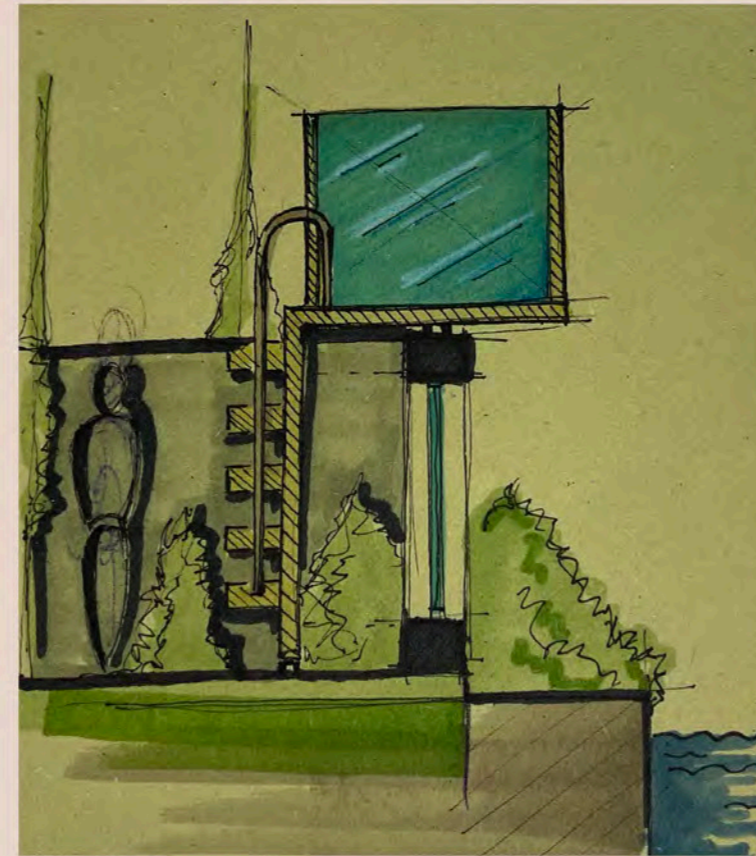
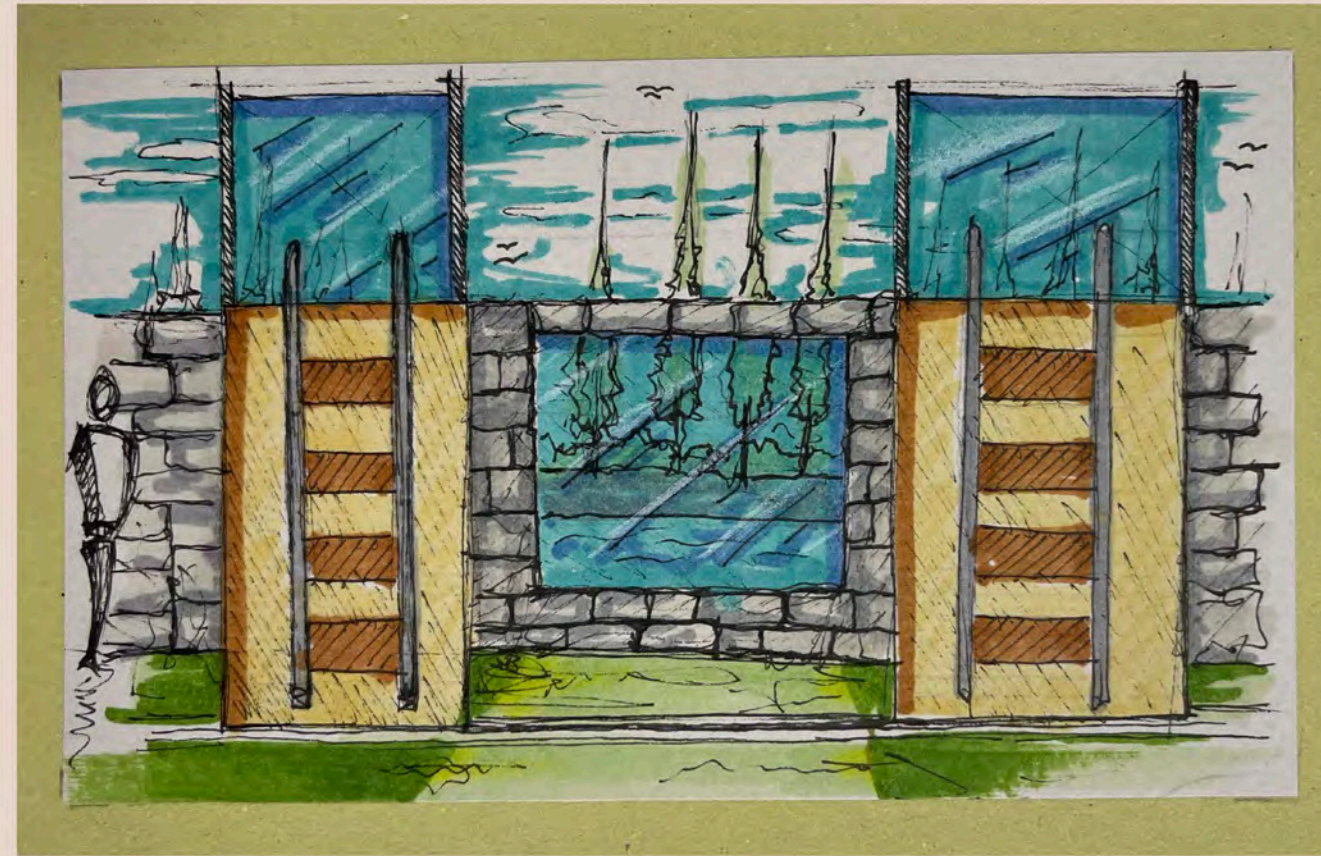


# THE SLIDONY

two on rail sliding platforms revealing a gorgeous two metres window facing union canal and harrison park.



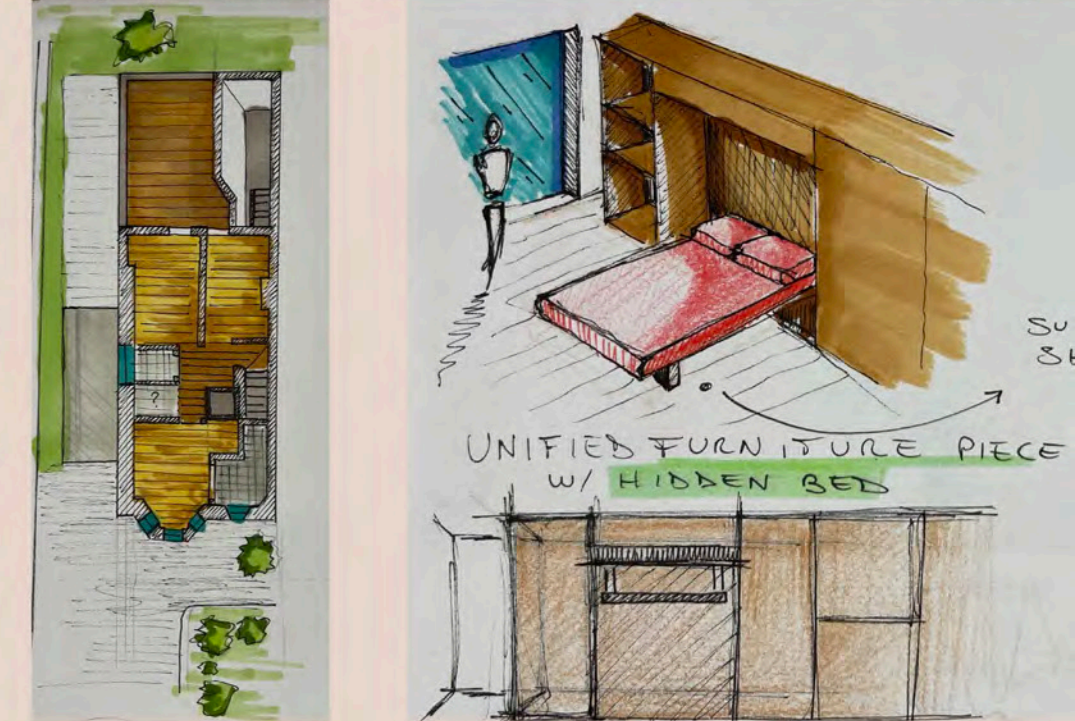
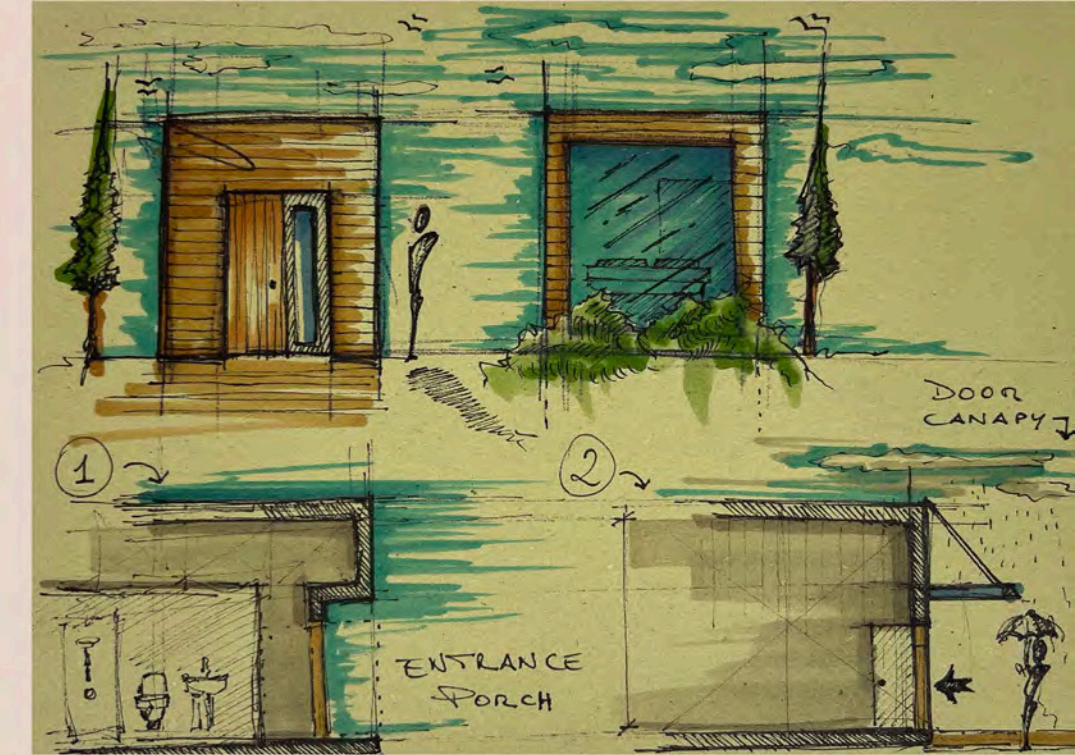
this is "slidony": a sliding balcony providing privacy only when its needed.



sketching the perfect layout for the eldest son's retreat: giving the young adult enough privacy and a private access to "the finley's pod".

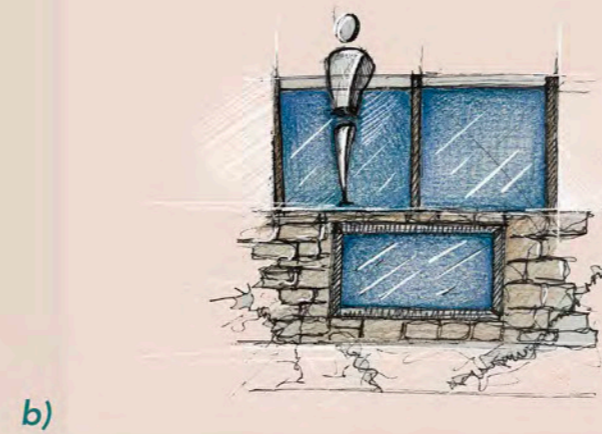
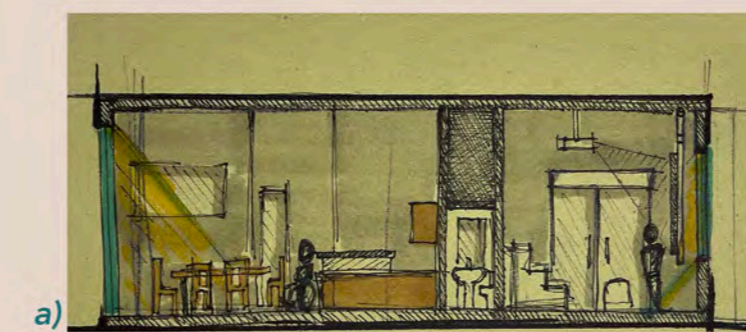
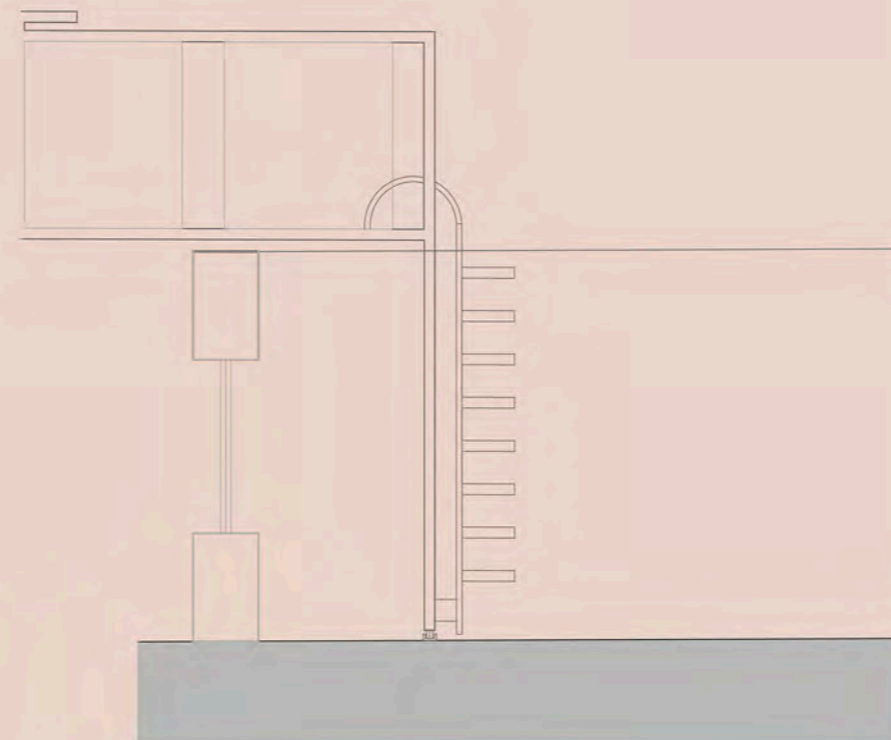
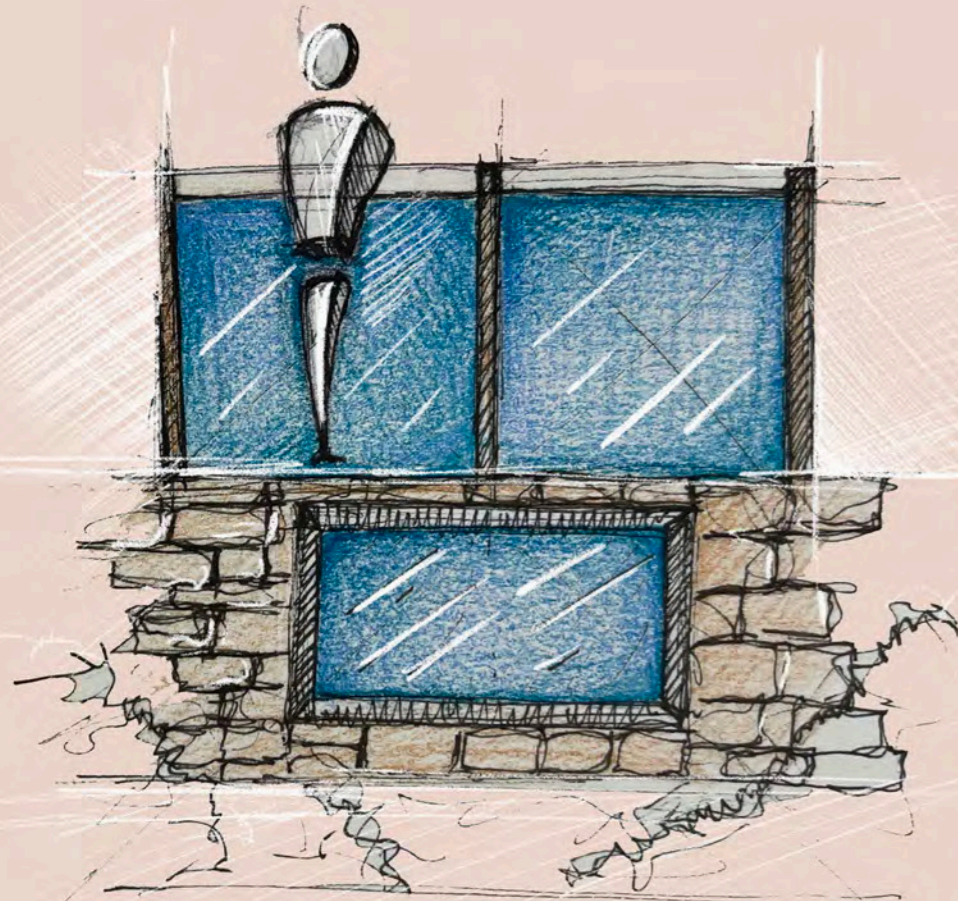
located on the rear garden and connected to the main house through the large wooden patio.

a praise to tiny-living solutions: own en-suite and murphy bed coming down from a large modular-unit which seamlessly blend with the cabin's interior wall.

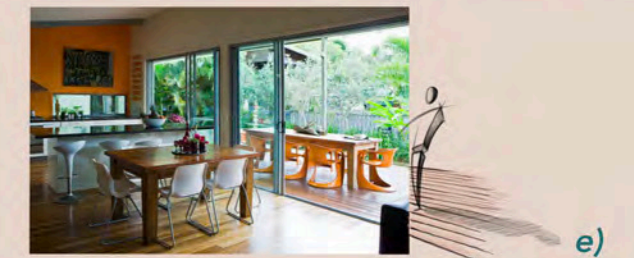
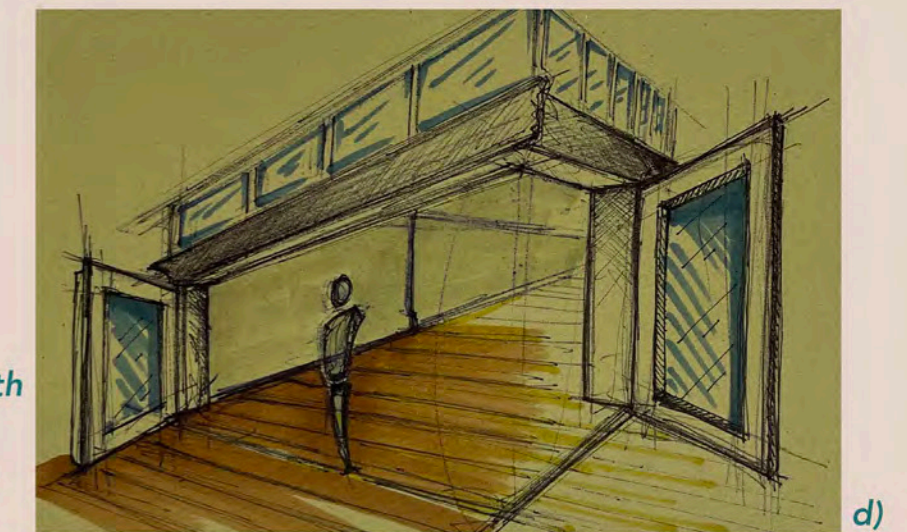


# THE SLIDONY

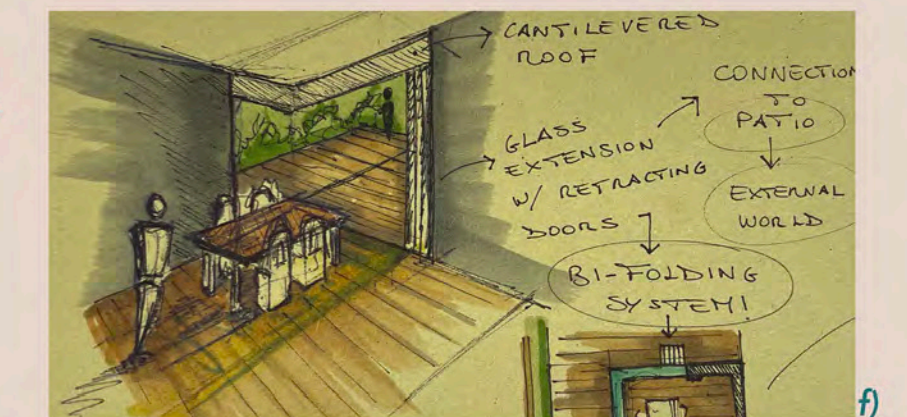
the idea came from the ladder used within swimming pool: which is now functioning as access to the top of the slidony.

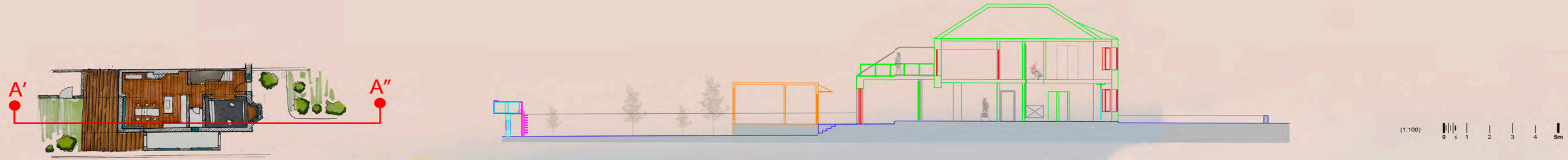


home cinema with retractable hidden screen. (see a, b, c,)



relation indoor-to-outdoor visual research (see d,e,f,)





## THE CLIENTS

- Hamish (dad / wheelchair/ cellist)
- Maura (mom / scientist / travels )
- Lilly (daughter / outdoor interest)
- Leo (son/ dancer / practice space)
- Finley (student / independence)
- Bruce (dog / sleeping area)

### needs & desires :

- own mini cinema
- summertime garden parties
- external access garden
- guests
- school activities
- en-suite
- wheelchair-friendly design
- modern style living



## THE SLIDONY

designing for living spaces project #1

a victorian semi-detached building redesigned with the purpose of responding to the users needs & requirements that will change over time.

the slidony is the main feature of the house: a clever modular solution to enhance the value of the long garden facing union-canal.

