



Entrance

SAFE. Sex Advice For Everyone

SAFE, Sex Advice For Everyone, tackles the insufficient sex education and sexual health services in Edinburgh, Scotland. Through research, I discovered half a million people live in Edinburgh, but there are only two sexual health services for young people. Furthermore, testimonies from interviewing young people painted a lacking picture, especially regarding the LGBTQ+ inclusion. This encouraged me to design a space challenging Scotland's mentality about sex.

SAFE is an innovative, welcoming and fun sexual

health centre with a clinic and a community education space located in the heart of Edinburgh. It provides help and advice for everything related to sex and relationships for young people aged 13-25.

The design prioritizes inclusion, functionality, originality, and innovation in its concept, taking influence from young people's learning preferences of a bright, fun and comfortable environment for learning about and discussing sex, utilizing voids to maximize the natural light.

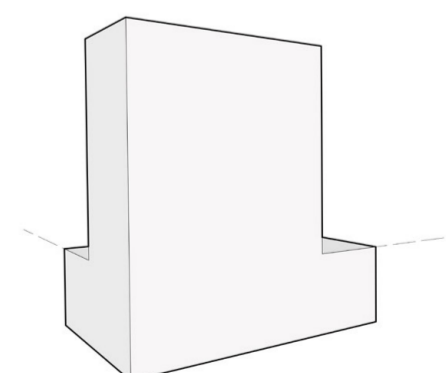


Location



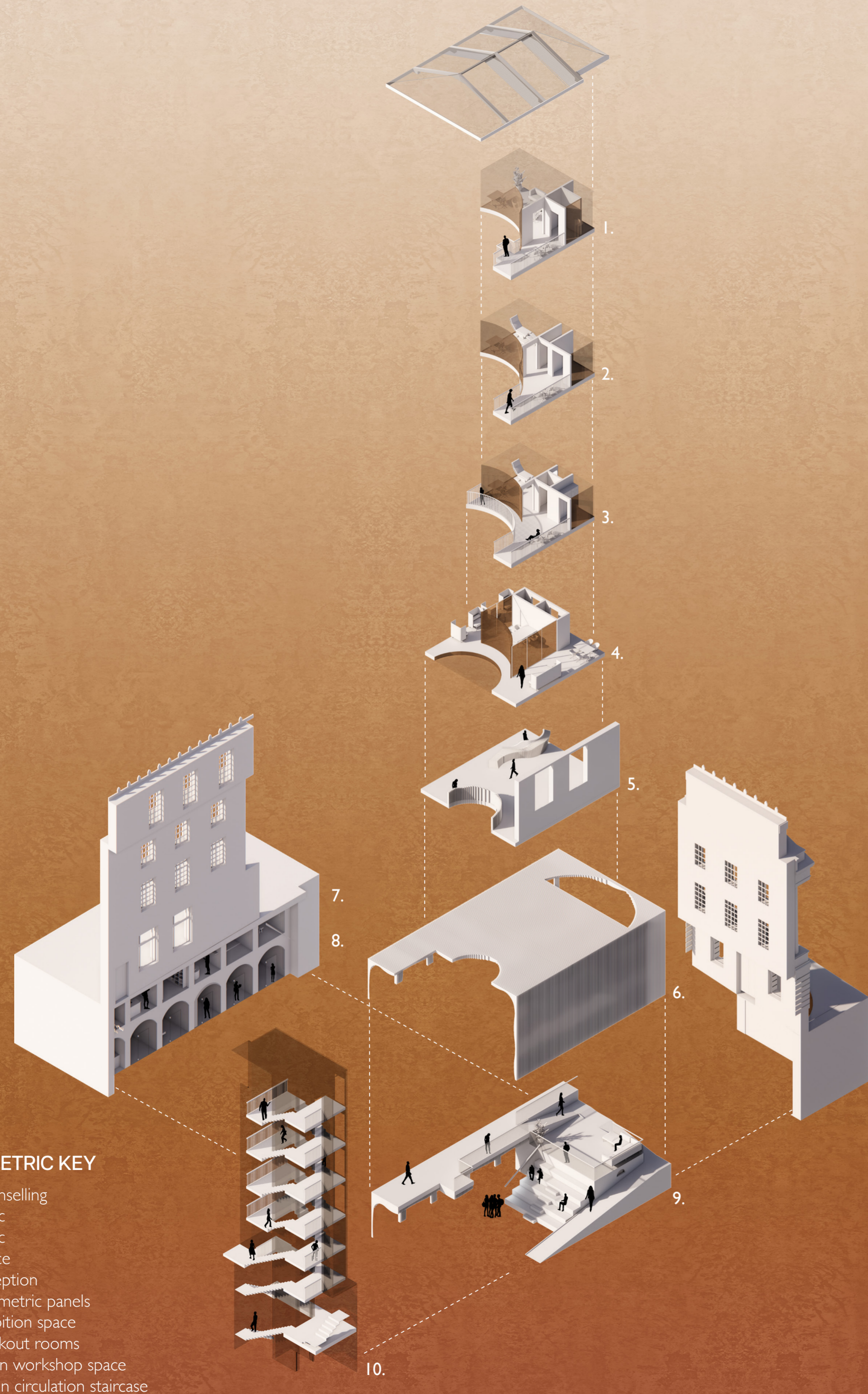
YOUNG PEOPLE

Young people prefer a bright, open, comfortable environment for learning about and discussing sex and relationships. Even though young people want the same feeling in the space, the spaces that give that feeling are individual.



BUILDING SHAPE

The building is tall and narrow with light issues. The original basement is dark and gloomy with no natural light.



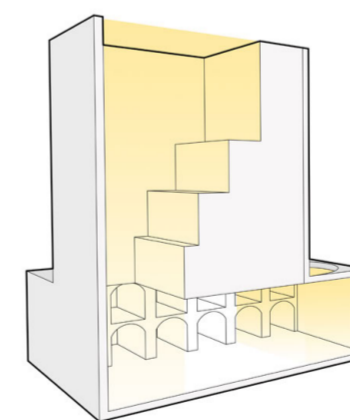
ISOMETRIC KEY

- 1. Counselling
- 2. Clinic
- 3. Clinic
- 4. Office
- 5. Reception
- 6. Parametric panels
- 7. Exhibition space
- 8. Breakout rooms
- 9. Open workshop space
- 10. Main circulation staircase



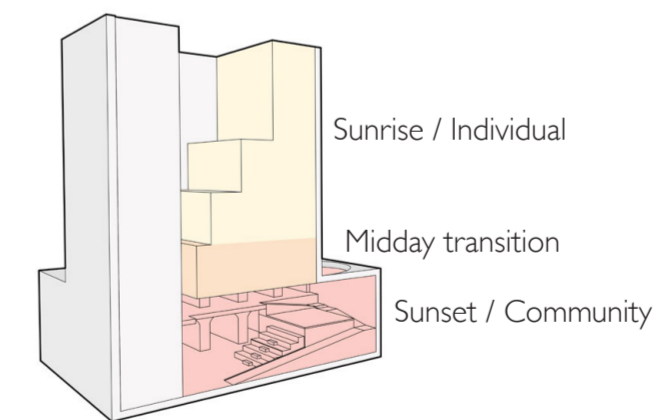
3 Reasons for choosing the building...

- 1. Easily accessible and approachable in a central location with lots of student movement in the area.
- 2. Restaurants, hotels and tourist spots provides a level of anonymity for the people visiting the building.
- 3. A statement building that is not hiding and is a good conversation starter.



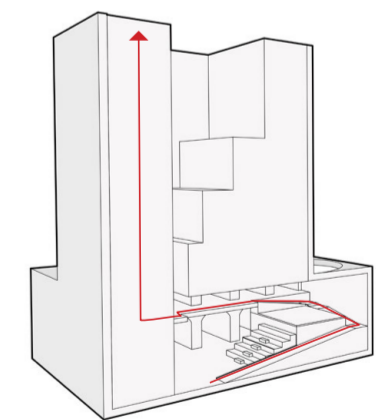
LIGHT ASCENSION

Opening the building up to maximise the open space and natural light. Using voids to allow natural light to filter into the building down to the basement through a skylight.



ZONING

The building is divided into two parts. As users ascend the building, imitating the sunrise and becoming the best version of themselves, it becomes a light, relaxed formal clinical space. The basement area will be a darker, playful informal space for learning, representing sunset and the end of the day. The ground floor is a transition space where individuals and community meet.



CIRCULATION ASCENSION

The main circulation staircase ascends the building, taking you from the community to the individual. Ascending in mythology refers to a state of mind and the journey to becoming the best version of yourself.

Young peoples experiences with sex education in Scotland...



I had about five lessons and they were unfocused and rowdy.
– 21, Male

We didn't learn anything about sexual health services and I wish teachers approached the subject as a real thing and not as an abstract subject.
19, female

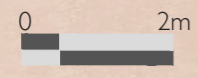


I only learned about STDs and STIs in the sexual health classes. I would have wanted to learn more about LGBTQ+ issues.
– 21, non-binary

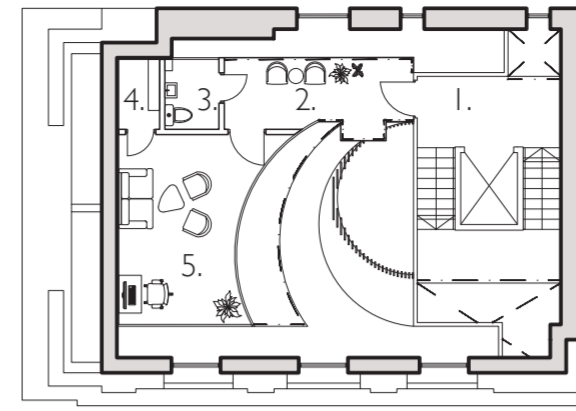
I have had around ten classes during a five year period. I want my sex education to be more inclusive and diverse covering a range of subjects.
– 22, female



SECTION AA Scale 1:100

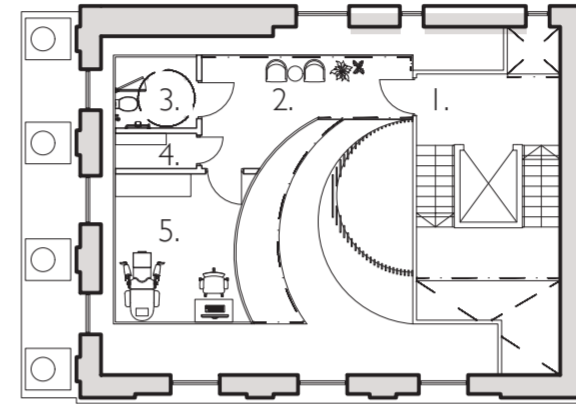


- 1. Glass stairs leading into entrance reception
- 2. Office
- 3. Clinic – doctor's office
- 4. Clinic – doctor's office
- 5. Clinic – counselling room
- 6. Lockers and bathroom
- 7. Sex shop
- 8. Exhibition – consent
- 9. Exhibition – sex toys
- 10. Exhibition – pornography set
- 11. Exhibition – ethics about the sex industry
- 12. Bathroom
- 13. Quiet room
- 14. Breakout room – diary
- 15. Storage
- 16. Breakout room – library
- 17. Breakout room – club bathroom
- 18. Breakout room –genitalia
- 19. Coffee shop
- 20. Open workshop space
- 21. Main circulation stairs
- 22. Side entrance



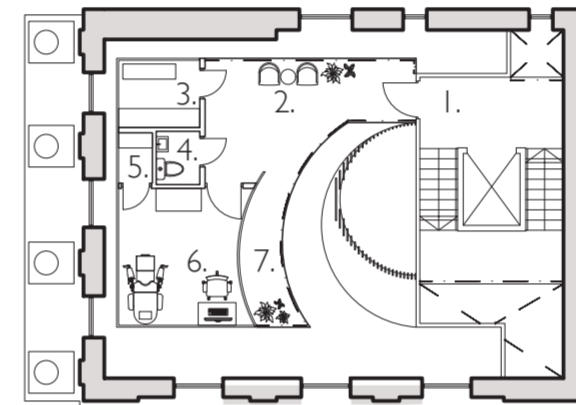
4th Floor

- 1. Staircase
- 2. Waiting area
- 3. Bathroom
- 4. Storage
- 5. Counselling room



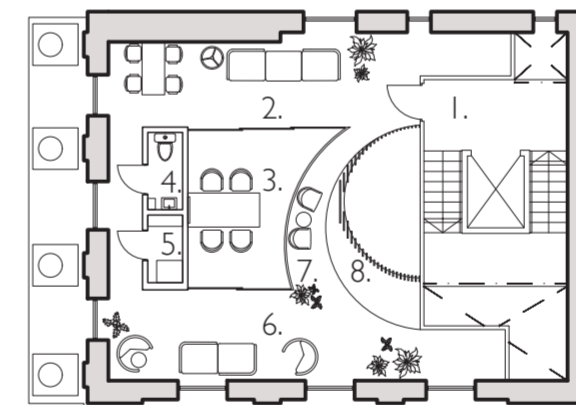
3rd Floor

- 1. Staircase
- 2. Waiting area
- 3. Bathroom
- 4. Storage
- 5. Doctor's office



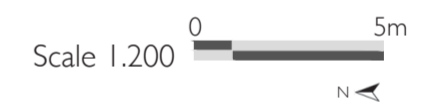
2nd Floor

- 1. Staircase
- 2. Waiting area
- 3. Changing room for employees
- 4. Bathroom
- 5. Storage
- 6. Doctor's office
- 7. Balcony



1st Floor

- 1. Staircase
- 2. Flexible noisy work space
- 3. Meeting room
- 4. Bathroom
- 5. Storage
- 6. Flexible quiet work space
- 7. Waiting area for visitors
- 8. Glass floor; view point into basement and sky



Clinic



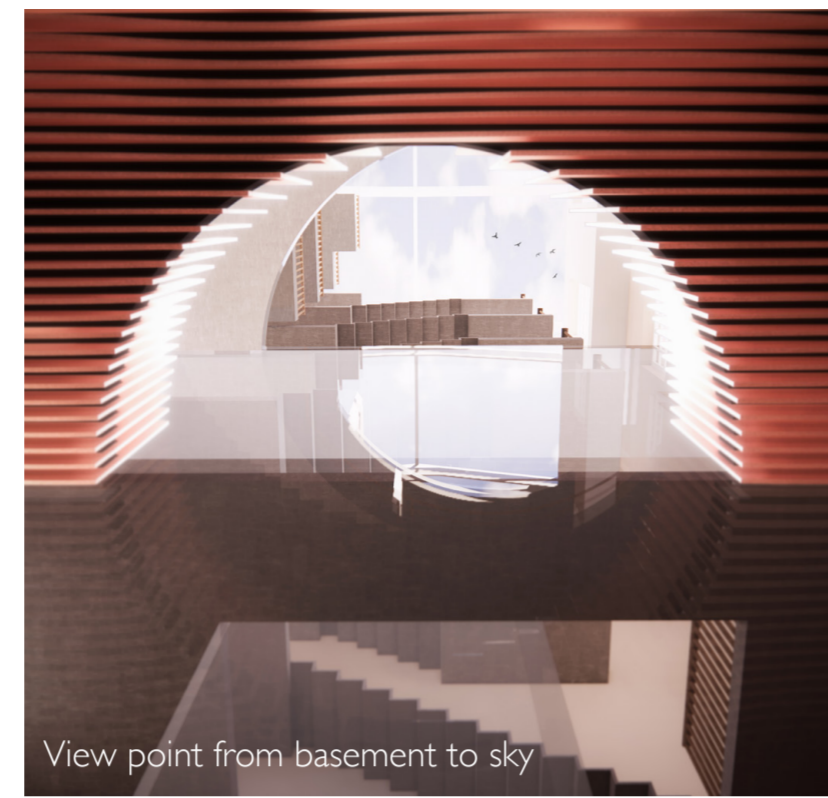
Model photography



Sex shop



Exhibition: consent



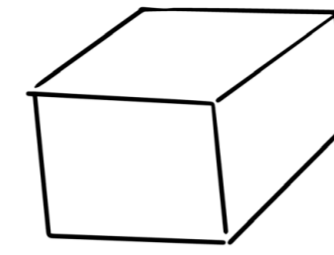
View point from basement to sky



Breakout rooms: club bathroom, library and diary (from left)

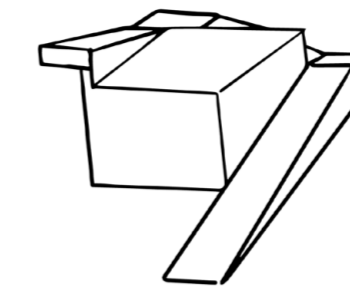


Open workshop space with connecting breakout rooms



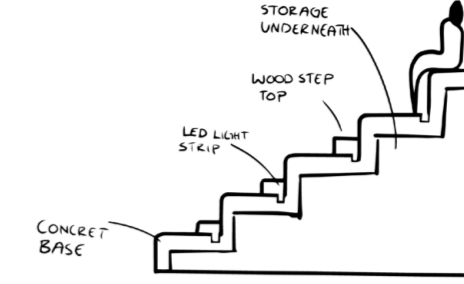
BLOCK

Starting with a block that represents the two floors in the basement.



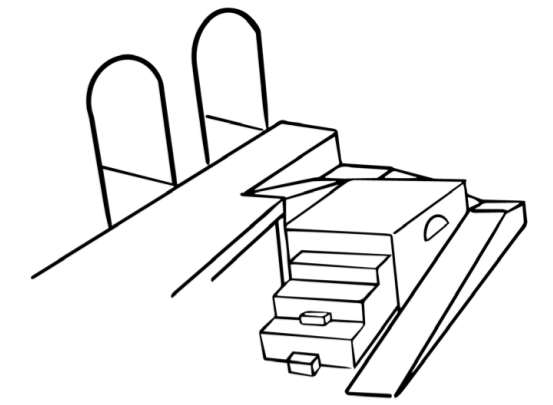
RAMP

From basement floor 1, a ramp is wrapped around a block down to basement floor 2 where the open workshop space is, keeping disabled access in mind.



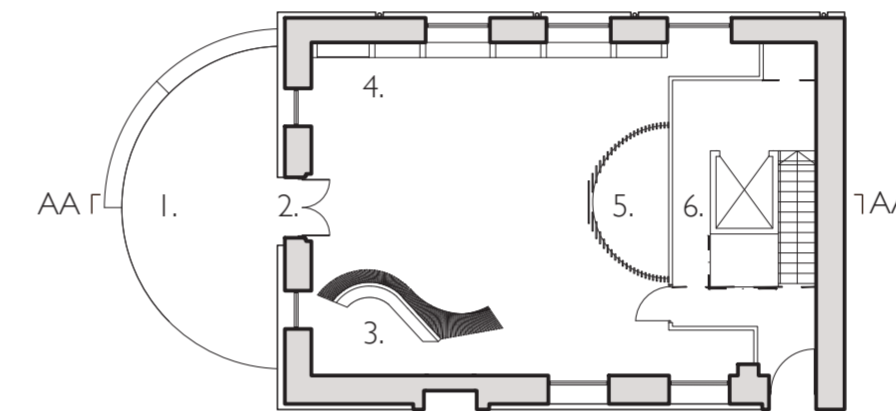
BLEACHER SEATING

Allows a small group of visitors to have a consistent good view during workshops and provides storage space beneath.



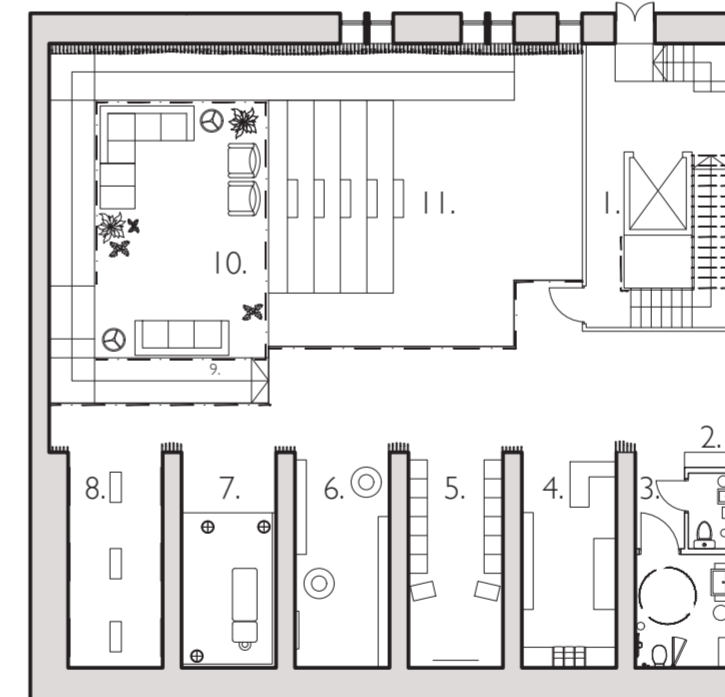
REFLECTION POINT

The top of the block is a reflection point visitors can stop at after the exhibition. The front entrance glass staircase is located above. Under the reflection point are several bathrooms.



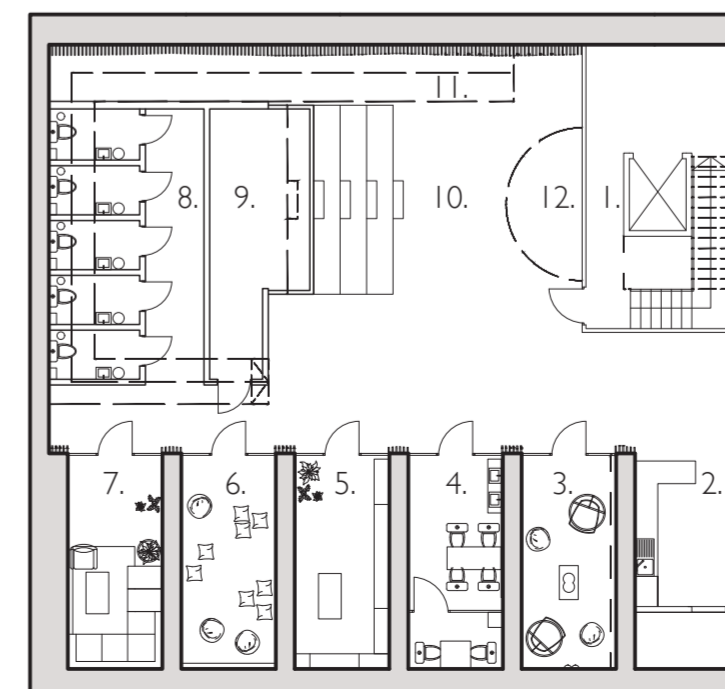
Ground Floor

- 1. Glass staircase
- 2. Main entrance
- 3. Reception
- 4. Seating, information and retail
- 5. View point into basement
- 6. Staircase
- 7. Side entrance



1st Basement Floor

- 1. Staircase
- 2. Lockers
- 3. Bathrooms
- 4. Sex shop
- 5. Exhibition room 1 – consent
- 6. Exhibition room 2 – introduction to sex toys
- 7. Exhibition room 3 – pornography
- 8. Exhibition room 4 – ethics about the sex industry
- 9. Ramp to 2nd basement floor
- 10. Reflection point
- 11. Open workshop space with bleacher seating



2nd Basement Floor

Scale 1:200 0 5m

- 1. Staircase – main circulation
- 2. Coffee shop
- 3. Breakout room – genitalia
- 4. Breakout room – club bathroom
- 5. Breakout room – library
- 6. Breakout room – diary
- 7. Quiet room
- 8. Bathrooms
- 9. Storage
- 10. Open workshop space with bleacher seating
- 11. Ramp to 1st basement floor
- 12. View point to skylight



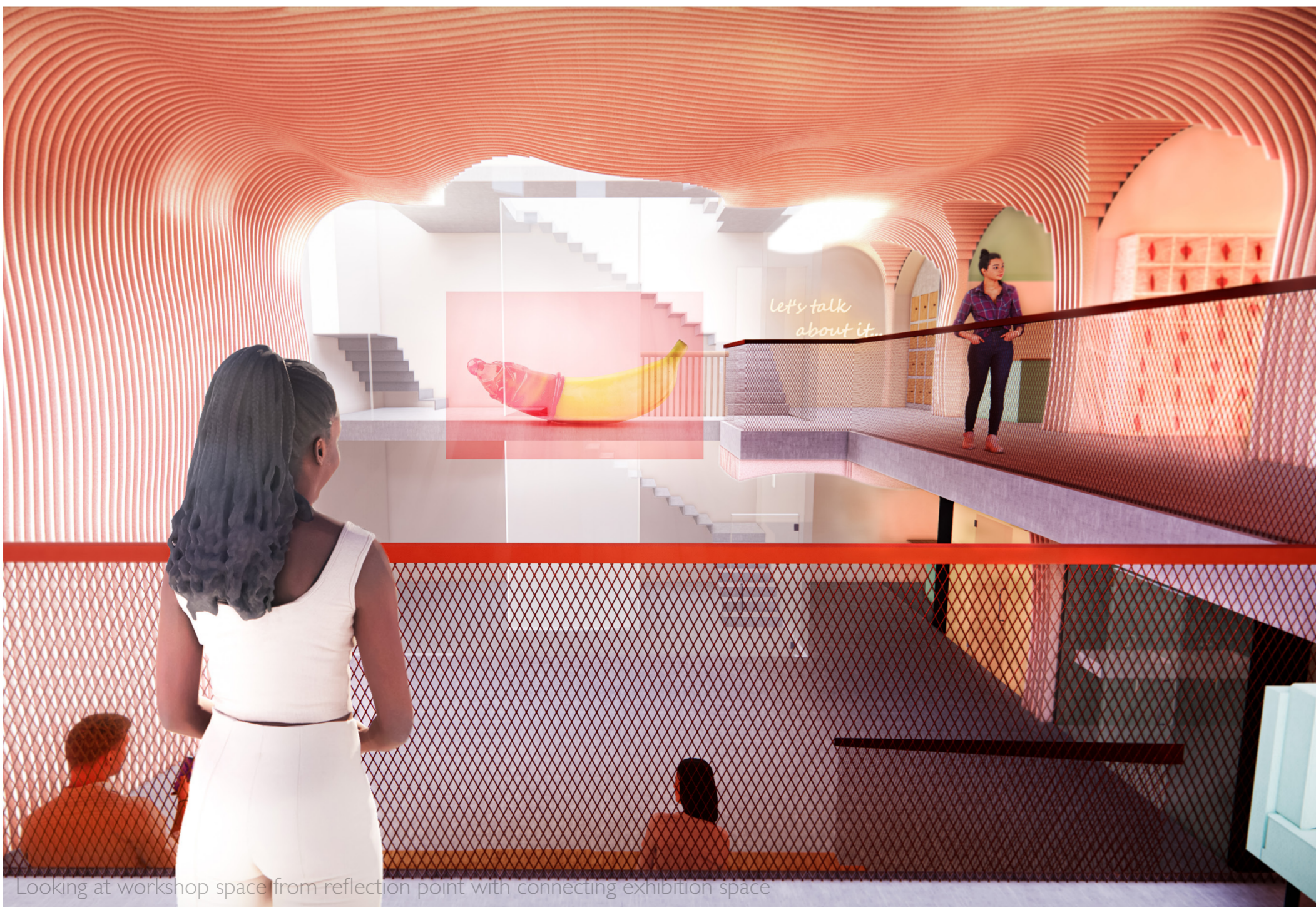
Model photography



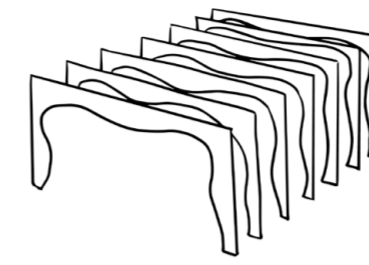
1:20 model: relationship between parametric panels and vaults



Model photography

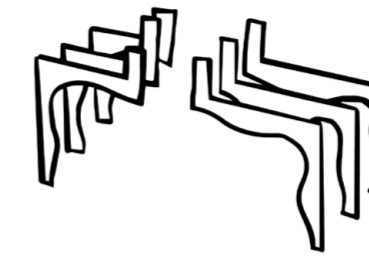


Looking at workshop space from reflection point with connecting exhibition space



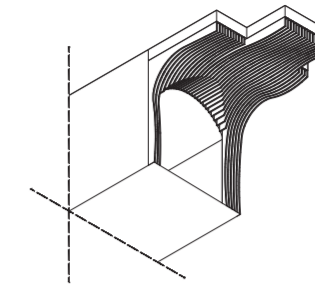
PARAMETRIC PANELS

Parametric panels follow the walls and ceiling vertically to create cavernous "uterus". There are lights in between panels to make it glow.



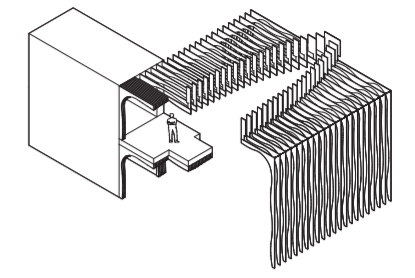
RAILING

Panels grow up through the floor from the basement following the parametric pattern. It becomes a railing for the light shaft and view point connecting the spaces.



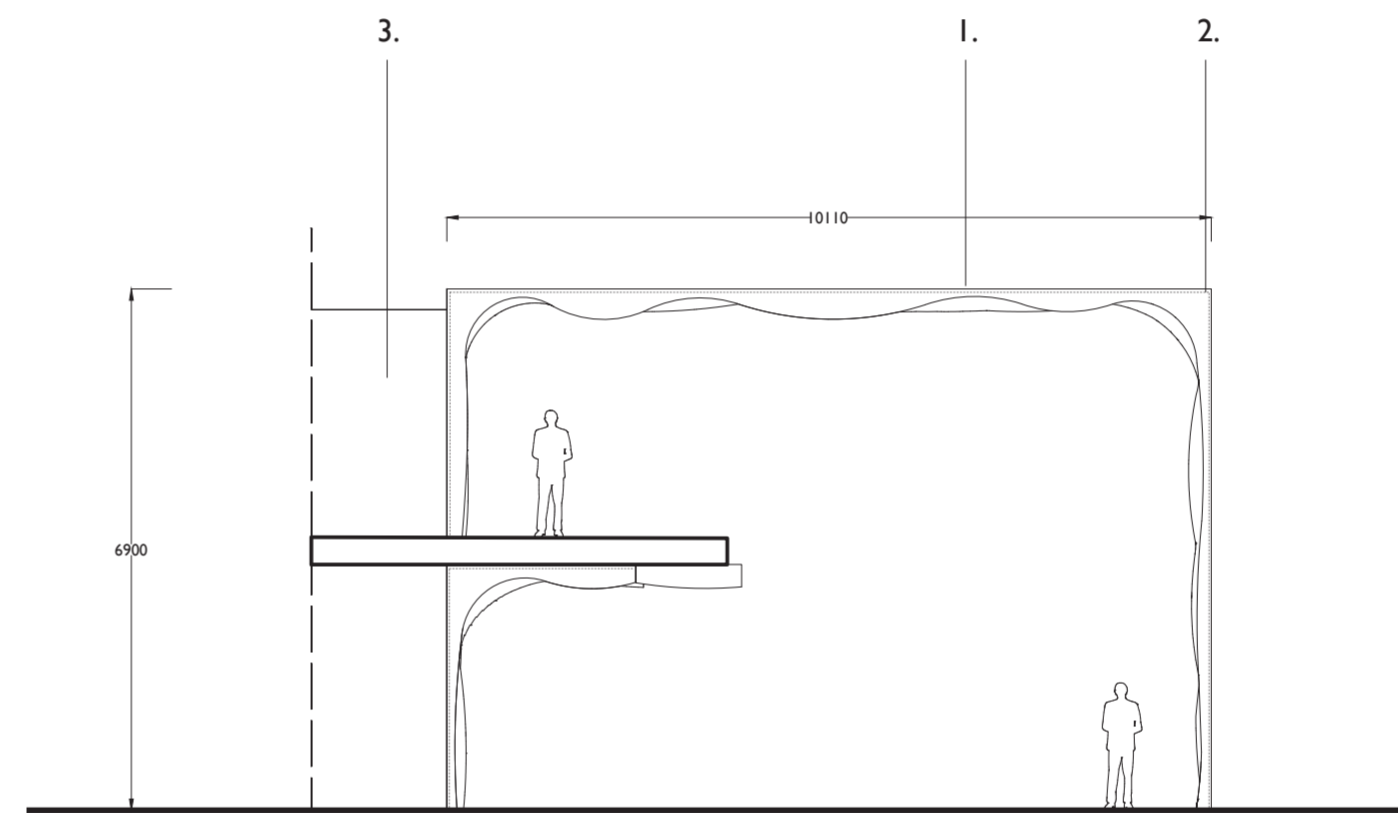
VAULTS

The relationship between the parametric panels and vaults in the basement.



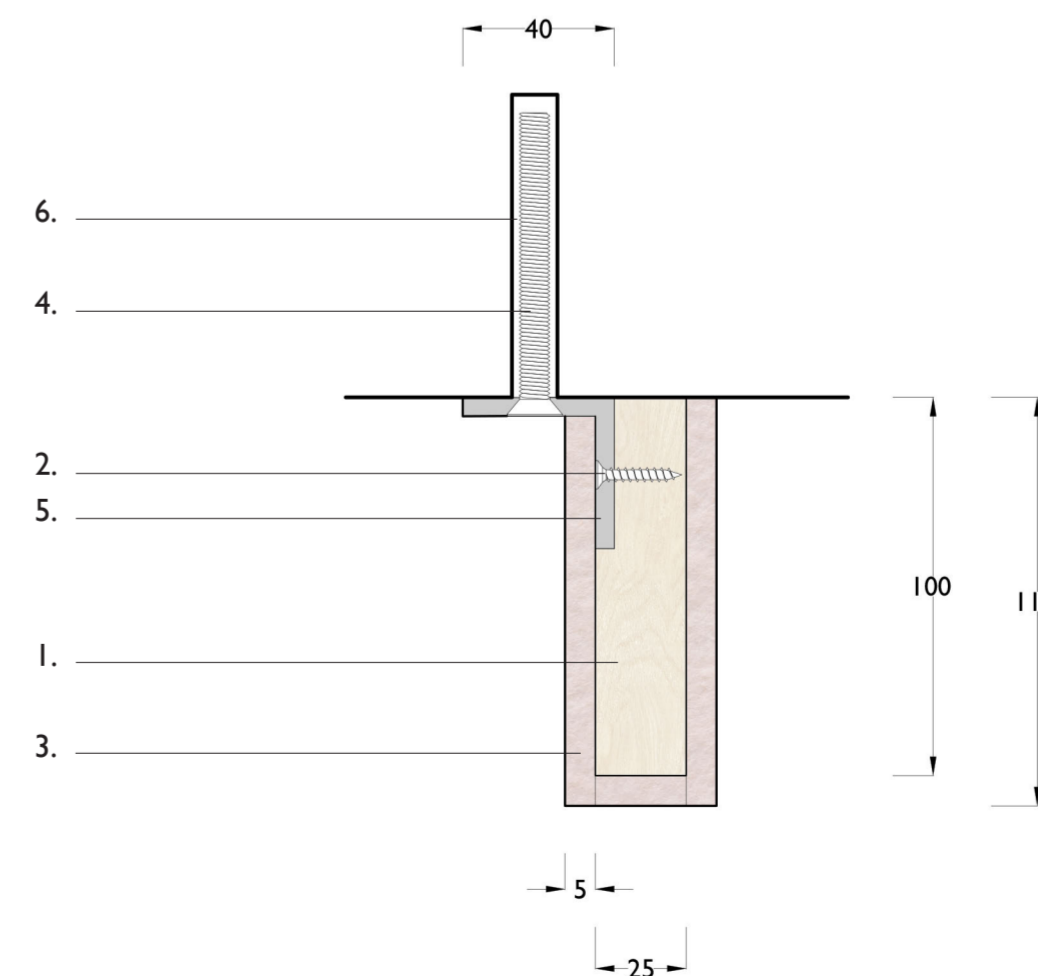
CONNECTION

Exploded isometric to view the connection between the basement vaults, parametric panels and railing on the ground floor.



Parametric panels 1:100 0 2m

- 1. Parametric panels covered in felt
- 2. Aluminium angle 40 x 40 x 5 mm
Powder coated dark grey (matte)
RAL Code: 7021
- 3. Vaults



Parametric panel Fixing detail 1:2 0 50mm

- 1. 24mm birch ply
- 2. Aluminium angle 40 x 40 x 5 mm.
Powder coated dark grey (matte)
RAL Code: 7021
- 3. 6mm pet felt bonded to ply substrate
- 4. m8 x 80mm stainless steel machine screw, countersunk
- 5. 5.0 x 20 wood screw, countersunk
- 6. Anchor resin